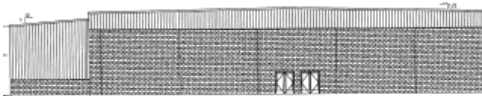
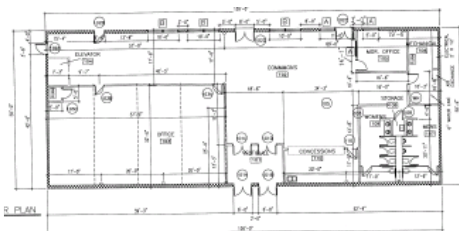


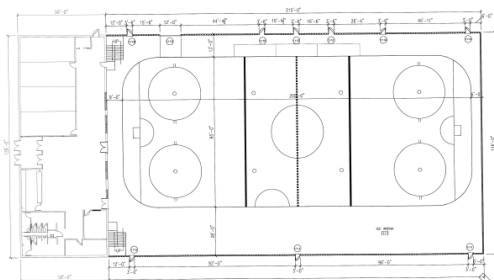
## What would the completed facility potentially look like?



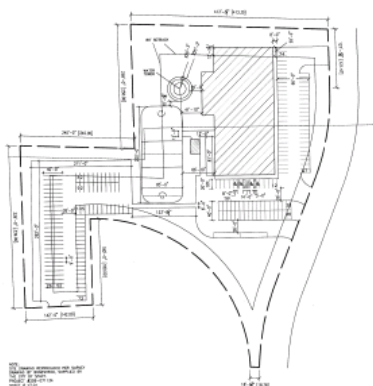
Front of Building



Proposed layout of Phase I



Proposed Final Layout



Proposed Site Layout

- NBAHA has launched a fundraising campaign to develop a Sports Complex in Stacy.
- NBAHA is working with the City of Stacy to create this facility in a Phased Approach for the citizens of the North Branch School District.
- Our association and the surrounding communities continue to grow and can support this facility.
- A Sports Complex will benefit the entire community, would function as a focal point for youth programming, augment current recreational youth activity (both ice and dry surface) and serve as a recreation anchor for the host community.

## Groundbreaking Ceremony & Family FUNdraising Event

NBAHA is excited to announce Phase I is fully funded and a groundbreaking ceremony will be held on May 22<sup>nd</sup> from 3 to 6 pm in Stacy at the site location next to Doyle fields. A Family **FUN**draising event will be held after the ceremony in an effort to continue raising funds for Phase II and III. The community is invited to attend!

## Questions?

Please leave a message at 651-674-4152 if you have any questions. Your call will be returned promptly.

E-mail  
arena@northbranchhockey.com

Or, visit  
www.northbranchhockey.com

# North Branch Area Hockey Association

## Stacy Sports Complex



www.northbranchhockey.com

## What is the vision of a Sports Complex?

This facility would function as a focal point for youth programming, augment current recreational youth activity, and serve as a recreation anchor for the host community.

## What are the benefits of a Sports Complex?

If managed to its maximum potential, this facility should be booked solid year-round and draw people of all ages from all locations within the state and from out-of-state areas. Activities will generate income for the commercial retailers and service industries located in the area.

## Where are these dollars going now?

Currently and in the recent past, the NBAHA members travel to Cambridge-Isanti, Chisago, Pine City, East Bethel, Mora and Grantsburg, WI for hockey practices and home games. The businesses in these communities are reaping the benefits of our members' gasoline purchases, a quick meal to feed a hungry hockey player, and much more.

## What can a Sports Complex be used for?

- hockey
- public skating
- learn-to-skate
- adult hockey leagues
- figure skating
- spring soccer
- spring baseball skills training
- tennis
- volleyball
- trade shows
- circus performances
- job fairs
- craft fairs
- receptions
- staging area for disaster relief

## What is the Phased Approach?

NBAHA has proposed a phased approach to building the Sports Complex in Stacy. This approach will provide much needed outdoor ice facilities for the association and community by this winter. Revenue generated from activities at the outdoor ice arena will be used to support the operation of the facility and continued building of Phase 2 and 3.

### Phase 1

- 126' x 50' front of Sports Complex
  - Locker Rooms, Concession, Restrooms, Open Area, Managers Room, Viewing area into rink
- Zamboni/Mechanical room
- 2 outdoor lighted natural regulation size ice rinks
- Open skating area
- Parking Lot

Estimate Cost: \$550,000

Time Line: Construction to start this summer and be completed by Winter of 2010

### Phase 2

- Cover one natural sheet of ice
- Add bleachers with seating

Estimate Cost: \$863,000

Time Line: To be determined based on funding

### Phase 3

- Add artificial ice service to the indoor rink

Estimate Cost: \$600,000

Time Line: To be determined based on funding

Note: The order of Phase 2 and 3 could be switched.

## How will the construction of the Sports Complex be funded?

To date, we have successfully raised over \$550,000 through fundraisers, contributions, charitable gambling, receipt of Liberty Mutual Grant, and commitments of free and/or reduced materials and labor. Phase I is now fully funded.

How will Phase 2 and 3 be funded? We are continuing our aggressive fundraising campaign. Potential grants for this project have been identified and are being pursued, our general fundraising efforts along with our charitable gambling operations continue.

NBAHA operates charitable gambling sites in four locations.

We are pursuing monetary and non-fiduciary donations from:

- association members
- community and local businesses
- philanthropic organizations

Currently, we need assistance:

- Planning and running fundraising events
- Pursuing free and/or reduced labor and materials for Phase I, II and III
- Construction of Phase I

If you are interested in helping in any of these areas please let us know.

With the communities help,  
**“Our Dream Is Becoming a Reality”.**