

WHY SHOULD I BECOME A PART OF THE STEELE COUNTY BLADES?

When are Tryouts?

2012-2013 Season Tryouts are July 20 and 21 at the Four Seasons Centre in Owatonna, MN.

How do I get more info and register?

Until further notice information can be found at the Steele County Blades Facebook page and the Blades Team page on the MnjHL website at www.mnjhl.com.

Don't forget: Players must already have a USA Hockey Confirmation Number to register for Tryouts.

Why Owatonna and an Expansion Team?

Owatonna and Steele County already have an established junior hockey tradition and relationship with Tier II Junior and College Programs, plus arena and locker room facilities that rival professional organizations.

Advantages of Junior Hockey:

- 1.5-2 hour full ice, daily practices
- Skills focused, high energy practices
- Higher Level of competition
- Professional skilled coaches with hockey experience and a devotion to player development
- Playoff bound organization with high expectations
- An Education Coordinator to help players succeed with their education and volunteer goals

Jon Jonasson will start the 2012-13 season as the Head Coach for the Blades.

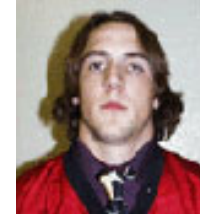
A native of Bloomington, Jon started his junior hockey career with the Northern Lights in the 2004 season and then played 1.5 seasons with Owls. He continued to play with the Evansville

Icemen of the AAHL in the 2009 season. He soon found a passion for coaching starting with a position for an assistant coach/Director of Player Development/Youth Skating Instructor with the Phoenix Polar Bears of the WSHL in 2010. He recently finished his first season as assistant coach/Director of Player Development/Youth Skating Instructor with the Phoenix Polar Bears of the WSHL. This is Jon's first season in a Head Coaching position.

Steele County Blades play in Owatonna's own **FOUR SEASONS CENTRE**.



The MnjHL is a GREAT place for players to develop. In fact, Owatonna has already proved to be a successful recruiting pool for players. Here are some Owatonna natives that have already found success on other teams in the MnjHL. Some have also advanced to college teams!



James Gaulrapp
Ice Hawks (2003-04),
now at MSU, Mankato



Brandon Rohrig
Ice Hawks
(2006-09)



Mike Schneider
Ice Hawks (2002-05),
now at UW Eau Claire



Joel Gaulrapp
Ice Hawks (2003-04),
now at UW Stout



Mike Gerhartz
Crusaders
(2007-08)

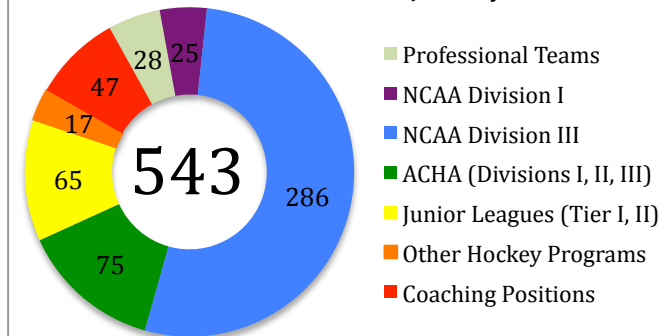


Korby Anderson, Ice
Hawks (2008-10), now at
Becker College and Blades
Eastern Regional Scout

Other Owatonna Natives that played in the MnjHL:

Matt Zaske, Ice Hawks (1996-97)
Lincoln Nguyen, Ice Hawks (2004-05)
Justin Olson, Ice Hawks (2004-06)
Eric Wobschall, Lakers (2009-10)
Kyle Kozelka, former MnjHL team – Lumberjacks,
(2009-10), now at St. Mary's University

Our Alumni: Where MnjHL Players advance*



*The MnjHL has only recently begun compiling alumni data (since approx 1996 season). The list is constantly growing.

MINNESOTA JUNIOR HOCKEY LEAGUE



www.mnjhl.com

The Minnesota Junior Hockey League is a USA Hockey Sanctioned League with a rich history. Originating over three decades ago, it has evolved into one of the most established and successful junior leagues in North America.

This season includes eight teams in Minnesota and Wisconsin, each with a unique program and overall theme designed to showcase the talent of the staff, coaches, and volunteers, along with the community the team plays in. Team organizations also have considerable support because of their connection with a Billet Family Program and local educational institutions.

Each team in the league is unified on one principal goal:

To promote and develop players, coaches, and referees to take their talent, skills, and lives to the next level.

Let the Minnesota Junior Hockey League be the foundation of your success!

PLAYER INFO/July 20-21 TRYOUT REGISTRATION:

Name _____
Birth date _____
Weight _____ Height _____ Position _____
E-Mail _____
Phone _____
Address _____
City _____
State _____ Zip _____
Previous Team _____ GP _____
Goals _____ Assists _____ SV % _____
Previous Coach Contact _____
Address _____
City _____
State _____ Zip _____
Phone _____
Parent/Guardian _____
Phone _____

Try-Out Costs \$175.00. Checks should be mailed to Head Coach Steele County Blades, P.O. Box 106, Owatonna, MN 55060. Make checks payable to Steele County Blades, subject line: Try Out Camp

The Steele County Blades are supported by individuals with years of junior hockey experience in Owatonna and the MnJHL:



From L to R, with MnJHL Staff: Josh Kiel, Eric Marshall (Blades Director of Game Night Operations), Ralph Hayne (President MnJHL), Michael Fatis (Secretary MnJHL), Peter Kalan (Blades Vice President, Director of Off Ice Officials), Harry Urschel (VP MnJHL), Ross Smith (Treasurer MnJHL), Tony Schwichtenberg (Blades Secretary), and Mark Woodrich (Blades President)

Blades Contact Info

Head Coach

Jon Jonasson
(952) 457-0525
scbladescoach@gmail.com

Assistant Coach

Steve Murphy
(419) 606-2201
murphy2323@hotmail.com

President

Mark Woodrich
(507) 390-4079
steelecountyblades@yahoo.com

Vice President, Director of Off Ice Officials

Pete Kalan

Secretary

Tony Schwichtenberg

Director of Game Night Operations

Eric Marshall

Mailing Address:

Steele County Blades
P.O. Box 106
Owatonna, MN 55060

BE A PART OF
THE STEELE COUNTY BLADES
2012-13 INAUGURAL SEASON!



Born out of a want to continue an already well-established junior hockey tradition to the people of and surrounding Owatonna, the **Steele County Blades** organization will strive to encompass the ideals of the MnJHL and will stand out as a representative of the communities of Steele County.

The MnJHL is proud to welcome the Steele County Blades into the league and strive to continue taking players to the next level!

