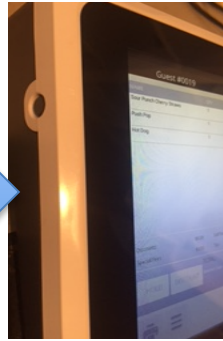
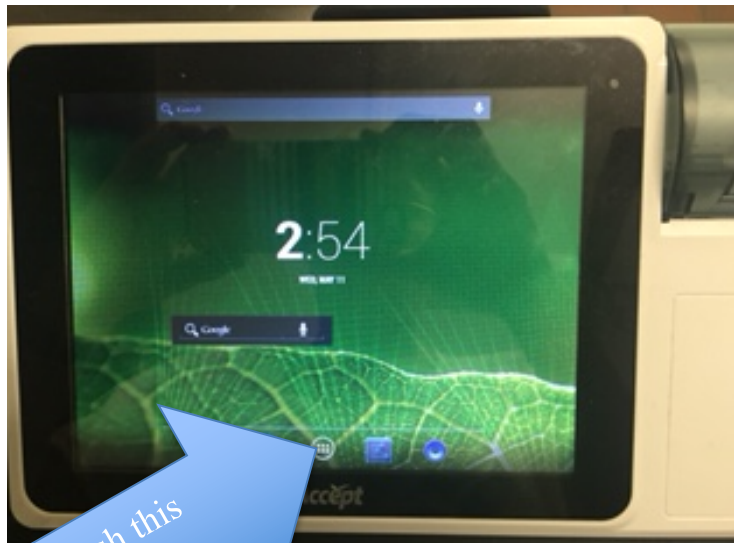


STEP ONE: LOGGING ON

1. Turn on by holding down power button found on the left side of the unit

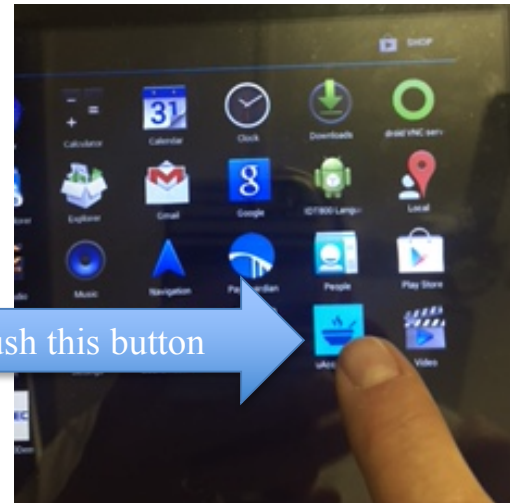


2. Takes you to this screen



3. Push this button

4. Push this button



Make sure this is on parent1

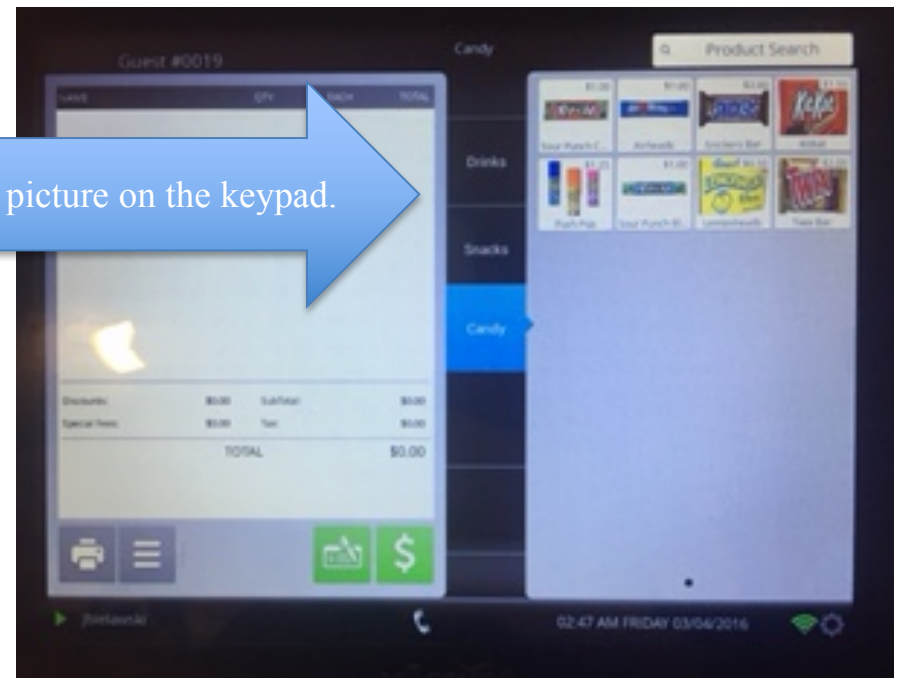
Pin is 1234



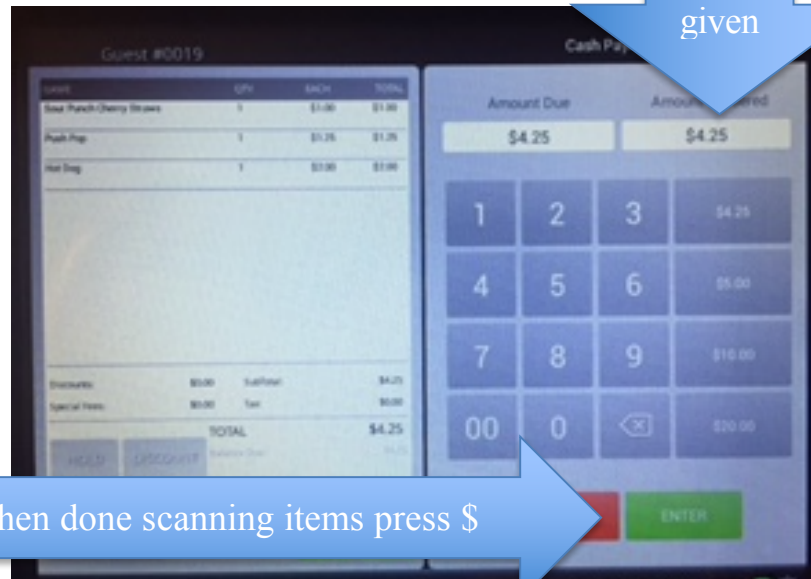
Press Login

STEP 2: BEGIN TRANSACTION

To begin transaction simply scan the item or press the picture on the keypad.



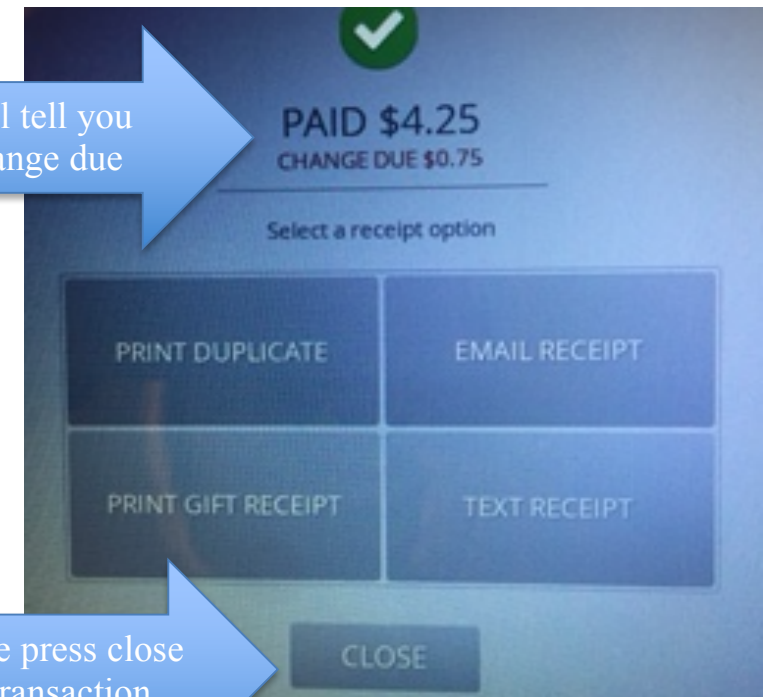
STEP 3: COMPLETE TRANSACTION



Enter
amount
given

When done scanning items press \$

Will tell you
change due



When done press close
for next transaction.