

# Team USA Game Notes

## USA (0-0-0-0) vs. Italy (0-0-0-0)

Paralympic Winter Games | March 8, 2014 | Shayba Arena | Sochi, Russia



Media Contact: Matt Trevor (MattT@usahockey.org) | Olympics.USAHockey.com | @USAHockey | @USAHockeyScores | Facebook: USA Hockey

### TODAY'S GAME

The 2014 U.S. Paralympic Sled Hockey Team opens its Paralympic schedule with a preliminary-round game against Italy at 4:30 p.m. (7:30 a.m. ET). The contest will be streamed live online at TeamUSA.org. Team USA has never played Italy in the Paralympic Winter Games.

### U.S. ALL-TIME IN PARALYMPIC OPENERS

Team USA is 2-1-1 (W-L-T) all-time in its opening game at the Paralympics. Most recently, the U.S. earned a 5-0 victory over South Korea on March 13, 2010, in Vancouver, B.C. Team USA's other opening-game triumph came at the 2002 Paralympic Winter Games in Salt Lake City, Utah, in a 3-0 win against Japan. The Americans lost to Germany (2-1) to open the 2006 Games and tied Canada (1-1) in its first Paralympic outing in 1998.

### DEFENDING GOLD MEDALISTS

Eight players return from the 2010 U.S. squad that captured the gold medal in Vancouver, including goaltender **Steve Cash**; defenseman **Taylor Chace**, **Nikko Landeros** and **Andy Yohe**; and forwards **Adam Page**, **Josh Pauls** and **Greg Shaw**. Additionally, Cash, Chace, Lipsett and Yohe all played on the 2006 U.S. Paralympic Sled Hockey Team that took home the bronze medal in Torino, Italy.

### AWARD WINNERS

**Steve Cash** and **Taylor Chace** were both honored following their performances at the 2010 Paralympic Winter Games. Cash, who posted five straight shutouts in the tournament, was named Best Goaltender by the tournament directorate and earned a spot on the media all-star team. Chace, who tallied five points (3-2) in five outings, was tabbed Best Defenseman by the tournament directorate and, like Cash, picked for a spot on the media all-star team.

### U.S. NATIONAL SLED TEAM EXPERIENCE

Fifteen players on the Paralympic roster were members of the 2012-13 U.S. National Sled Hockey Team that garnered the silver medal at the 2013 IPC Sled Hockey World Championship. **Brody Roybal** is in his first season with the U.S. National Team. **Andy Yohe** returned to Team USA for the first time since 2009-10.

### CAPTAINS AMERICA

**Andy Yohe** is the captain of the 2014 Paralympic Sled Hockey Team, while its alternate captains are **Taylor Chace** and **Josh Sweeney**. Yohe wore the 'C' for the 2010 Paralympic Team as well.

### SERVING THEIR COUNTRY

Four members of the U.S. Paralympic Sled Hockey Team -- **Jen Lee**, **Rico Roman**, **Paul Schaus** and **Josh Sweeney** -- have served or currently serve in the U.S. military. Lee is currently a sergeant in the U.S. Army. Roman is retired U.S. Army, while Schaus and Sweeney are both former U.S. Marines.

### BROADCAST INFORMATION

For the first time, select contests will be televised in the United States. Team USA's preliminary round game vs. Russia and the semifinal matchups will be shown live on NBC Sports Network. The gold-medal game will be broadcast on NBC. All of Team USA's game will be streamed live on TeamUSA.org. Additionally, NBCSN will air a daily studio show featuring coverage from across the Games.

### 2014 U.S. Paralympic Sled Team Roster

No.	Name	Pos.	Hometown
1	Jen Lee	G	San Francisco, Calif.
4	Brody Roybal	F	Northlake, Ill.
6	Declan Farmer	F	Tampa, Fla.
7	Taylor Lipsett	F	Plano, Texas
8	Greg Shaw	F	Merritt Island, Fla.
9	Andy Yohe (C)	D	Bettendorf, Iowa
11	Tyler Carron	D	Fort Collins, Colo.
13	Josh Sweeney (A)	F	Phoenix, Ariz.
14	Dan McCoy	F	Cheswick, Pa.
15	Nikko Landeros	D	Johnstown, Colo.
18	Kevin McKee	F	Davenport, Iowa
19	Taylor Chace (A)	D	Hampton Falls, N.H.
20	Adam Page	F	Lancaster, N.Y.
23	Rico Roman	F	Portland, Ore.
27	Josh Pauls	F	Green Brook, N.J.
28	Paul Schaus	F	Buffalo, N.Y.
34	Steve Cash	G	Overland, Mo.

**General Manager:** Dan Brennan (Colorado Springs, Colo.)

**Head Coach:** Jeff Sauer (Madison, Wis.)

**Assistant Coach:** Guy Gosselin (Grafton, Wis.)

**Team Doctor:** Mike Uihlein (Grafton, Wis.)

**Athletic Trainer:** Mike Cortese (Boynton Beach, Fla.)

**Equipment Manager:** Joel Isaacson (Houghton, Mich.)

### 2014 Paralympic Winter Games Team USA Schedule

Date	Opponent	Time/Result
Sat., March 8	Italy	7:30 a.m. ET
Sun., March 9	South Korea	8:30 a.m. ET
Tues., March 11	Russia	8:30 a.m. ET
Wed., March 12	Placement Games	8 a.m./12 p.m. ET
Thurs., March 13	Semifinals	5 a.m./12 p.m. ET
Sat., March 15	Bronze-Medal Game	5 a.m. ET
	Gold-Medal Game	12 p.m. ET

\*\* All games at Shayba Arena

### U.S. Paralympic Sled Team History

Year	Finish	Record	Head Coach	Team Captain
2010	Gold	5-0-0	Ray Maluta	Andy Yohe
2006	Bronze	3-0-2	Keith Blase	Joe Howard
2002	Gold	6-0-0	Rick Middleton	Joe Howard
1998	Sixth	1-1-3	Angelo Bianco	Dave Conklin

**LINE BY LINE**

Coach Sauer announced to the media that two of his forward lines will be **Josh Sweeney, Rico Roman** and **Paul Schaus** -- all three of which are military veterans. Another line will include **Declan Farmer, Brody Roybal** and **Josh Pauls**. That grouping has a combined age of just 52 years. Roybal is 15, Farmer is 16 and Pauls is 21.

Defense pairings are expected to be **Andy Yohe** with **Nikko Landeros** and **Taylor Chace** with **Tyler Carron**.

**ICE WARRIORS**

The 2014 U.S. Paralympic Sled Hockey Team was featured in a PBS documentary entitled 'Ice Warriors,' that debuted Feb. 24. The 60-minute film follows Team USA from its first training camp last September through its three-game series vs. Canada in January. The documentary can be viewed in full at [www.pbs.org/wgbh/medal-quest/ice-warriors/](http://www.pbs.org/wgbh/medal-quest/ice-warriors/)

**COACHING PEDIGREE**

Head Coach **Jeff Sauer** is in his third year with Team USA. He led the squad to the gold medal at the 2012 IPC World Championship and the silver medal at the 2013 IPC World Championship. He coached the 1955 U.S. Men's National Team at the International Ice Hockey Federation Men's World Championship. He has also coached the last three U.S. Deaflympic Ice Hockey Teams. Sauer spent 31 seasons as a head coach in NCAA Division I, racking up 655 career wins. He won two national championships with the University of Wisconsin (1983, '90) and also coached for Colorado College, his alma mater. In 2011, Sauer was honored with the Lester Patrick Award for "outstanding service to hockey in the U.S."

Assistant Coach Guy Gosselin is also in his third season. He is two-time Olympian, skating for U.S. Olympic Men's Ice Hockey Team in 1998 and 1992. He was an alternate captain in 1992. He also played on three U.S. Men's National Teams (1986, '90-91).

**ONLINE MEDIA GUIDE**

Player and staff bios and historical information pertinent to the 2014 U.S. Paralympic Sled Hockey Team online at [olympics.usahockey.com](http://olympics.usahockey.com). Daily feature stories, photos and videos of Team USA are also available online.

**2013-14 U.S. National Sled Team Stats**

Name	GP	G	A	PTS	PIMS
Josh Pauls	8	4	4	8	0
Declan Farmer	8	4	3	7	6
Josh Sweeney	7	2	4	6	0
Taylor Chace	8	0	4	4	4
Paul Schaus	8	2	1	3	2
Rico Roman	7	1	2	3	2
Nikko Landeros	8	1	1	2	2
Taylor Lipsett	8	0	2	2	0
Tyler Carron	8	1	0	1	8
Kevin McKee	8	1	0	1	2
Greg Shaw	8	1	0	1	2
Adam Page	8	0	1	1	0
Brody Roybal	8	0	0	0	8
Andy Yohe	8	0	0	0	2
Dan McCoy	8	0	0	0	0

Name	GP	W-L	MINS	SV%	GAA
Steve Cash	7	4-3	310	.851	2.03
Jen Lee	2	1-0	50	.875	0.90

**Pronunciation Guide**

Name	Pronunciation
Brody Roybal.....	ROY-buhl
Declan Farmer.....	DECK-luhn
Andy Yohe .....	YO-ee
Tyler Carron.....	CARE-uhn
Nikko Landeros.....	NEE-ko
.....	Lahn-DER-ohs
Taylor Chace.....	CHASE
Paul Schaus .....	SCHOWS
Jeff Sauer .....	SOW-uhr
Guy Gosselin.....	GOSS-lihn

**2013-14 U.S. National Sled Hockey Team Game-By-Game Statistics**

Player	12/1 vs. RUS	12/2 vs. KOR	12/4 vs. CAN	12/5 vs. RUS	12/7 vs. CAN	1/9 vs. CAN	1/10 vs. CAN	1/11 vs. CAN
Lee	DNP	W, 45:00, 5/5	DNP	ND, 5:14, 2/3	DNP	DNP	DNP	DNP
Roybal	0-0	0-0	0-0	0-0	0-0	0-0	0-0	0-0
Farmer	0-1	2-0	0-0	1-2	0-0	0-0	1-0	0-0
Lipsett	0-1	0-1	0-0	0-0	0-0	0-0	0-0	0-0
Shaw	0-0	1-0	0-0	0-0	0-0	0-0	0-0	0-0
Yohe	0-0	0-0	0-0	0-0	0-0	0-0	0-0	0-0
Carron	1-0	0-0	0-0	0-0	0-0	0-0	0-0	0-0
Sweeney	0-0	1-0	0-0	0-1	DNP	0-0	1-0	0-3
McCoy	0-0	0-0	0-0	0-0	0-0	0-0	0-0	0-0
Landeros	0-0	0-0	0-1	0-0	0-0	1-0	0-0	0-0
McKee	0-0	0-0	0-0	0-0	0-0	0-0	0-0	1-0
Chace	0-0	0-2	0-0	0-1	0-0	0-0	0-0	0-1
Page	0-1	0-0	0-0	0-0	0-0	0-0	0-0	0-0
Roman	0-0	0-0	0-0	0-0	DNP	0-0	0-1	1-1
Pauls	0-0	1-2	0-0	2-0	1-0	0-1	0-1	0-0
Schaus	0-1	0-0	0-0	1-0	0-0	0-0	0-0	1-0
Cash	W, 45:00, 10/11	DNP	L, 45:00, 15/19	W, 39:46, 12/12	L, 45:00, 11/14	L, 45:00, 10/14	W, 45:00, 10/11	W, 45:00, 12/13

## 2013-14 U.S. National Sled Hockey Team Box Scores

### World Sledge Hockey Challenge • USA vs. Russia

Dec. 1, 2013 • MasterCard Centre • Toronto, Ont., Canada

Russia	0	1	0	—	1
United States	0	1	1	—	2

1st: No scoring  
 2nd: RUS-Lisov (Lysov, Terentyev), 1:07  
 USA-Carron (Farmer, Pauls), 14:39  
 3rd: USA-Salamone (Lipsett, Page), 13:23

**Penalties:** RUS 4-16; USA 1-2      **Power Plays:** RUS 0-1; USA 0-3  
**Saves:** RUS-Lobanov (7-2-4--13), 45:00; USA-Cash (2-5-3--10), 45:00  
**Shots:** RUS 2-6-3--11; USA 7-3-5--15

### World Sledge Hockey Challenge • USA vs. S. Korea

Dec. 2, 2013 • MasterCard Centre • Toronto, Ont., Canada

South Korea	0	0	0	—	0
United States	2	1	2	—	5

1st: USA-Farmer (Pauls), 3:48 (pp)  
 USA-Pauls (Chace), 12:53  
 2nd: USA-Shaw (Pauls, Chace), 4:58  
 3rd: USA-Sweeney (Lipsett), 4:56  
 USA-Farmer (unassisted), 9:11

**Penalties:** KOR 5-10; USA 3-6      **Power Plays:** KOR 0-3; USA 1-5  
**Saves:** KOR-Yu (12-9-5--26), 45:00; USA-Lee (2-2-1--5), 45:00  
**Shots:** KOR 2-2-1--5; USA 14-10-7--31

### World Sledge Hockey Challenge • USA vs. Canada

Dec. 4, 2013 • MasterCard Centre • Toronto, Ont., Canada

Canada	3	0	1	—	4
United States	0	0	1	—	1

1st: CAN-McGregor (Delaney), 5:07  
 CAN-Westlake (Bridges), 9:41  
 CAN-Westlake (Dixon), 13:37 (pp)  
 2nd: No scoring  
 3rd: USA-Salamone (Landeros), 2:54  
 CAN-Westlake (Rempel), 9:51

**Penalties:** CAN 5-10; USA 3-6      **Power Plays:** CAN 1-3; USA 0-5  
**Saves:** CAN-Watson (6-6-12--24), 45:00; USA-Cash (7-7-1--15), 45:00  
**Shots:** CAN 10-7-2--19; USA 6-6-13--25

### World Sledge Hockey Challenge • USA vs. Russia

Dec. 5, 2013 • MasterCard Centre • Toronto, Ont., Canada

Russia	0	0	1	—	1
United States	0	3	1	—	4

1st: No scoring  
 2nd: USA-Pauls (Farmer), 0:19  
 USA-Schaus (Sweeney), 7:33  
 USA-Pauls (Farmer), 11:25  
 3rd: USA-Farmer (Chace), 5:33 (pp)  
 RUS-Terentyev (Lisov), 13:29 (pp)

**Penalties:** RUS 3-6; USA 5-10      **Power Plays:** RUS 1-4; USA 1-2  
**Saves:** RUS-Ivanov (6-3-X--9), 28:00; USA-Cash (2-7-3--12), 39:46  
 RUS-Lobanov (X-X-3--3), 17:00; USA-Lee (X-X-2--2), 5:14  
**Shots:** RUS 2-7-6--15; USA 6-9-2--17

### World Sledge Hockey Challenge • USA vs. Canada

Dec. 7, 2013 • MasterCard Centre • Toronto, Ont., Canada

Canada	3	0	0	—	3
United States	0	1	0	—	1

1st: CAN-Dixon (Dorion, Larocque), 9:03  
 CAN-Bridges (Westlake, Bowden), 12:23  
 CAN-Westlake (Bowden, Bridges), 12:55  
 2nd: USA-Pauls (unassisted), 5:51  
 3rd: No scoring

**Penalties:** CAN 3-6; USA 1-2      **Power Plays:** CAN 0-1; USA 0-3  
**Saves:** CAN-Watson (6-5-1--12), 45:00; USA-Cash (3-3-5--11), 45:00  
**Shots:** CAN 6-3-5--14; USA 6-6-1--13

### 2014 Sled Series • USA vs. Canada

Jan. 9, 2014 • Extreme Ice Center • Indian Trail, N.C.

Canada	3	1	0	—	4
United States	0	1	0	—	1

1st: CAN-Westlake (Bowden, Bridges), 3:13  
 CAN-Bowden (Bridges), 8:46  
 CAN-Rempel (Bridges, Dixon), 13:15 (pp)  
 2nd: USA-Landeros (Pauls), 5:04 (pp)  
 CAN-Rempel (Dixon, Bridges), 5:34 (pp)  
 3rd: No scoring

**Penalties:** CAN 2-4; USA 2-4      **Power Plays:** CAN 2-2; USA 1-2  
**Saves:** CAN-Watson (6-4-5--15), 45:00; USA-Cash (4-0-6--10), 45:00  
**Shots:** CAN 7-1-6--14; USA 6-5-5--16

### 2014 Sled Series • USA vs. Canada

Jan. 10, 2014 • Extreme Ice Center • Indian Trail, N.C.

Canada	0	0	1	—	1
United States	1	0	1	—	2

1st: USA-Farmer (Pauls), 11:07  
 2nd: No scoring  
 3rd: USA-Sweeney (Roman), 8:25  
 CAN-Bowden (unassisted), 14:09

**Penalties:** CAN 2-4; USA 2-4      **Power Plays:** CAN 0-2; USA 0-2  
**Saves:** CAN-St-Amand (3-5-5--13), 44:23; USA-Cash (7-2-1--10), 45:00  
**Shots:** CAN 7-2-2--11; USA 4-5-6--15

### 2014 Sled Series • USA vs. Canada

Jan. 11, 2014 • Extreme Ice Center • Indian Trail, N.C.

Canada	1	0	0	—	1
United States	1	1	1	—	3

1st: CAN-Bowden (Westlake), 7:15 (pp)  
 USA-Schaus (Sweeney, Roman), 13:46  
 2nd: USA-Roman (Sweeney, Chace), 11:06  
 3rd: USA-McKee (Sweeney, Cash), 14:45 (en)

**Penalties:** CAN 3-6; USA 3-6      **Power Plays:** CAN 1-3; USA 0-3  
**Saves:** CAN-Watson (1-3-7--11), 44:33; USA-Cash (8-2-2--12), 45:00  
**Shots:** CAN 9-2-2--13; USA 2-4-8--14

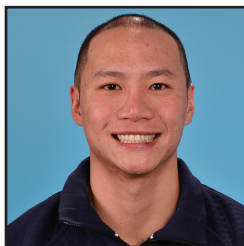
## 2013-14 U.S. National Sled Team Schedule

Date	Opponent	Location	Result
Dec. 1, 2013	Russia #	Toronto, Ont.	W, 2-1
Dec. 2, 2013	South Korea #	Toronto, Ont.	W, 5-0
Dec. 4, 2013	Canada #	Toronto, Ont.	L, 1-4
Dec. 5, 2013	Russia #	Toronto, Ont.	W, 4-1
Dec. 7, 2013	Canada #	Toronto, Ont.	L, 1-3
Jan. 9, 2014	Canada *	Charlotte, N.C.	L, 1-4
Jan. 10, 2014	Canada *	Charlotte, N.C.	W, 2-1
Jan. 11, 2014	Canada *	Charlotte, N.C.	W, 3-1

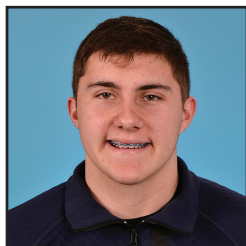
# Denotes World Sledge Hockey Challenge game

\* Denotes 2014 Sled Series game





1 | Jen Lee | G  
San Francisco, Calif.



4 | Brody Roybal | F  
Northlake, Ill.



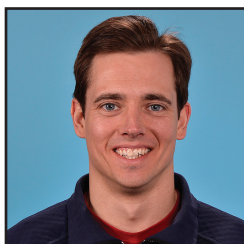
6 | Declan Farmer | F  
Tampa, Fla.



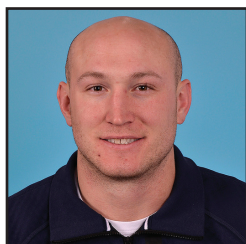
7 | Taylor Lipsett | F  
Plano, Texas



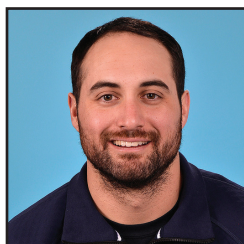
8 | Greg Shaw | F  
Merritt Island, Fla.



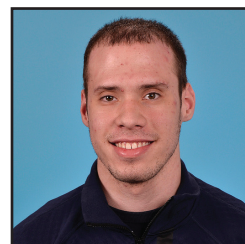
9 | Andy Yohe | D  
Bettendorf, Iowa



11 | Tyler Carron | D  
Fort Collins, Colo.



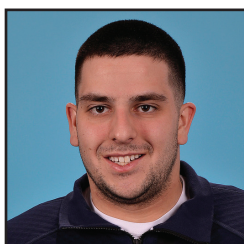
13 | Josh Sweeney | F  
Phoenix, Ariz



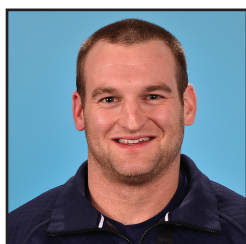
14 | Dan McCoy | F  
Cheswick, Pa.



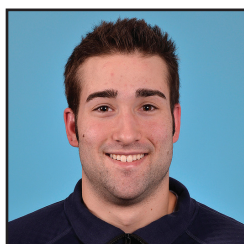
15 | Nikko Landeros | D  
Johnstown, Colo.



18 | Kevin McKee | F  
Davenport, Iowa



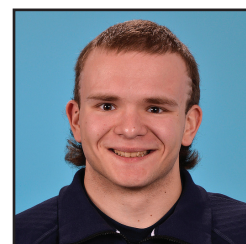
19 | Taylor Chace | D  
Hampton Falls, N.H.



20 | Adam Page | F  
Lancaster, N.Y.



23 | Rico Roman | F  
Portland, Ore.



27 | Josh Pauls | F  
Green Brook, N.J.



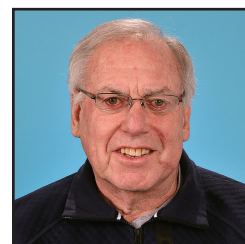
28 | Paul Schaus | F  
Buffalo, N.Y.



34 | Steve Cash | G  
Overland, Mo.



Dan Brennan  
General Manager



Jeff Sauer  
Head Coach



Guy Gosselin  
Assistant Coach



**Back Row:** Athletic Trainer Mike Cortese, Head Coach Jeff Sauer, General Manager Dan Brennan, Assistant Coach Guy Gosselin, Team Doctor Mike Uihlein, Equipment Manager Joel Isaacson

**Middle Row:** Greg Shaw, Dan McCoy, Josh Pauls, Taylor Lipsett, Josh Sweeney, Taylor Chace, Rico Roman, Adam Page, Kevin McKee, Brody Roybal

**Front Row:** Steve Cash, Paul Schaus, Nikko Landeros, Andy Yohe, Declan Farmer, Tyler Carron, Jen Lee

**Not Pictured:** Matt Trevor, USAH Manager of Communications

2014 U.S. PARALYMPIC SLED HOCKEY TEAM

No.	Name	Height	Weight	Birthdate	Hometown	Most Recent Team
<b>GOALTENDERS (2)</b>						
34	Steve Cash	5-7	150	5/9/89	Overland, Mo.	Disabled Athlete Sports Association St. Louis Blues
1	Jen Lee	6-2	185	7/26/86	San Francisco, Calif.	San Antonio Rampage
<b>DEFENSEMEN (4)</b>						
11	Tyler Carron	6-0	165	5/11/89	Fort Collins, Colo.	Colorado Avalanche
19	Taylor Chace	6-1	205	5/9/86	Hampton Falls, N.H.	Northeast Passage Wildcats
15	Nikko Landeros	6-1	185	4/28/89	Johnstown, Colo.	Colorado Avalanche
9	Andy Yohe	5-10	175	7/21/78	Bettendorf, Iowa	Rehabilitation Institute of Chicago Blackhawks
<b>FORWARDS (13)</b>						
9	Andy Yohe	5-10	175	7/21/78	Bettendorf, Iowa	Rehabilitation Institute of Chicago Blackhawks
6	Declan Farmer	6-0	135	11/5/97	Tampa, Fla.	Tampa Bay Lightning
7	Taylor Lipsett	5-4	160	1/2/87	Plano, Texas	Dallas Stars
14	Daniel McCoy	5-4	145	1/24/94	Cheswick, Pa.	Pittsburgh Penguins
18	Kevin McKee	4-7	115	2/11/90	Davenport, Iowa	Rehabilitation Institute of Chicago Blackhawks
20	Adam Page	5-6	170	3/10/92	Lancaster, N.Y.	Buffalo Sabres
27	Josh Pauls	5-8	135	12/31/92	Green Brook, N.J.	Disabled Athlete Sports Association St. Louis Blues
4	Brody Roybal	3-1	120	5/25/98	Northlake, Ill.	Rehabilitation Institute of Chicago Blackhawks
28	Paul Schaus	5-7	155	11/8/88	Buffalo, N.Y.	Buffalo Sabres
23	Rico Roman	5-9	180	2/4/81	Portland, Ore.	San Antonio Rampage
8	Greg Shaw	3-0	105	2/28/90	Merritt Island, Fla.	Tampa Bay Lightning/Space Coast Hurricanes
13	Josh Sweeney	5-8	150	6/6/87	Phoenix, Ariz.	San Antonio Rampage

Team Staff

General Manager: Dan Brennan, Colorado Springs, Colo.

Head Coach: Jeff Sauer, Madison, Wis.

Assistant Coach: Guy Gosselin, Grafton, Wis.

Athletic Trainer: Mike Cortese, Boynton Beach, Fla.

Team Physician: Dr. Mike Uihlein, Grafton, Wis.

Equipment Manager: Joel Isaacson, Houghton, Mich