



HCOP MEMBERSHIP HANDBOOK

2025-2026





FORCE

MAKE THE CORRECT CALL

OMHA Approved
Officiating Uniforms



WWW.FORCESPORTS.COM

OMHA CODE OF CONDUCT

This Code of Conduct identifies the standard of behaviour which is expected of all Ontario Minor Hockey Association (“OMHA”) members and participants, including but not limited to all players, guardians, parents, coaches, officials, volunteers, directors, officers, committee members, convenors, team managers, trainers and administrators involved in OMHA activities and events.

The OMHA is committed to providing an environment in which all individuals are treated with respect. Members and participants of the OMHA shall conduct themselves at all times in a manner consistent with the values of the OMHA which include fairness, integrity and mutual respect.

During the course of all OMHA activities and events, members shall avoid behaviour which brings the OMHA or the sport of hockey into disrepute, including but not limited to abusive use of alcohol, use of non-medical drugs and use of alcohol by minors.

OMHA members and participants shall at all times adhere to the OMHA operational policies and procedures, to rules and regulations governing OMHA events and activities, and to rules and regulations governing any competitions in which the member participates on behalf of the OMHA.

Members and participants of the OMHA shall not engage in any activity or behaviour which interferes with a competition or with any player or team’s preparation for a competition, or which endangers the safety of others.

Members of the OMHA shall refrain from comments or behaviours, which are disrespectful, offensive, abusive, racist or sexist. In particular, behaviour, which constitutes harassment, abuse or bullying, will not be tolerated.

Failure to comply with this Code of Conduct may result in disciplinary action, in accordance with the OMHA Code of Conduct Policies & Procedures, including but not limited to, the loss or suspension of certain or all privileges connected with the respective Member Association in the OMHA including the opportunity to participate in the OMHA and its Member Association activities and events, both present and future.

WELCOME TO THE OMHA REFEREE PROGRAM

The OMHA takes great pride in the professionalism and expertise of its officiating staff. This professionalism requires the Officials to have a thorough knowledge of the rules plus the ability to apply the techniques and procedures set out by the HOCKEY CANADA OFFICIATING PROGRAM. We expect all Officials on the OMHA staff to promote the game of hockey through excellence in officiating.

OMHA Officials must possess the physical skills as well as the knowledge of the rules to ensure that the game of hockey is played fairly and safely for all participants.

OMHA Officials must have a positive attitude towards the game both on and off the ice.

In most cases a new Official will start as a Level 1 official at the age of 14 or a Level 2 official at the age of 16 or older and as age permits, will move up through the HOCKEY CANADA OFFICIATING PROGRAM until they become competent High Performance Officials doing the highest level of hockey provided by the OMHA.

Every OMHA Official is required to be recertified annually by attending a HOCKEY CANADA OFFICIATING PROGRAM Membership Clinic and successfully passing the National Recertification Examination.

Please review this Membership Handbook and if there is something that requires further clarification, do not hesitate to contact your OMHA Officiating Coach, Officiating Manager, or the Chair, Referee Program.

INTRODUCTION

Hockey Canada, the Ontario Hockey Federation, and the Ontario Minor Hockey Association each respect gender diversity. As such, the playing rules, regulations, policies, and related documentation are written using gender neutral nouns and pronouns to respect all genders.

TABLE OF CONTENTS

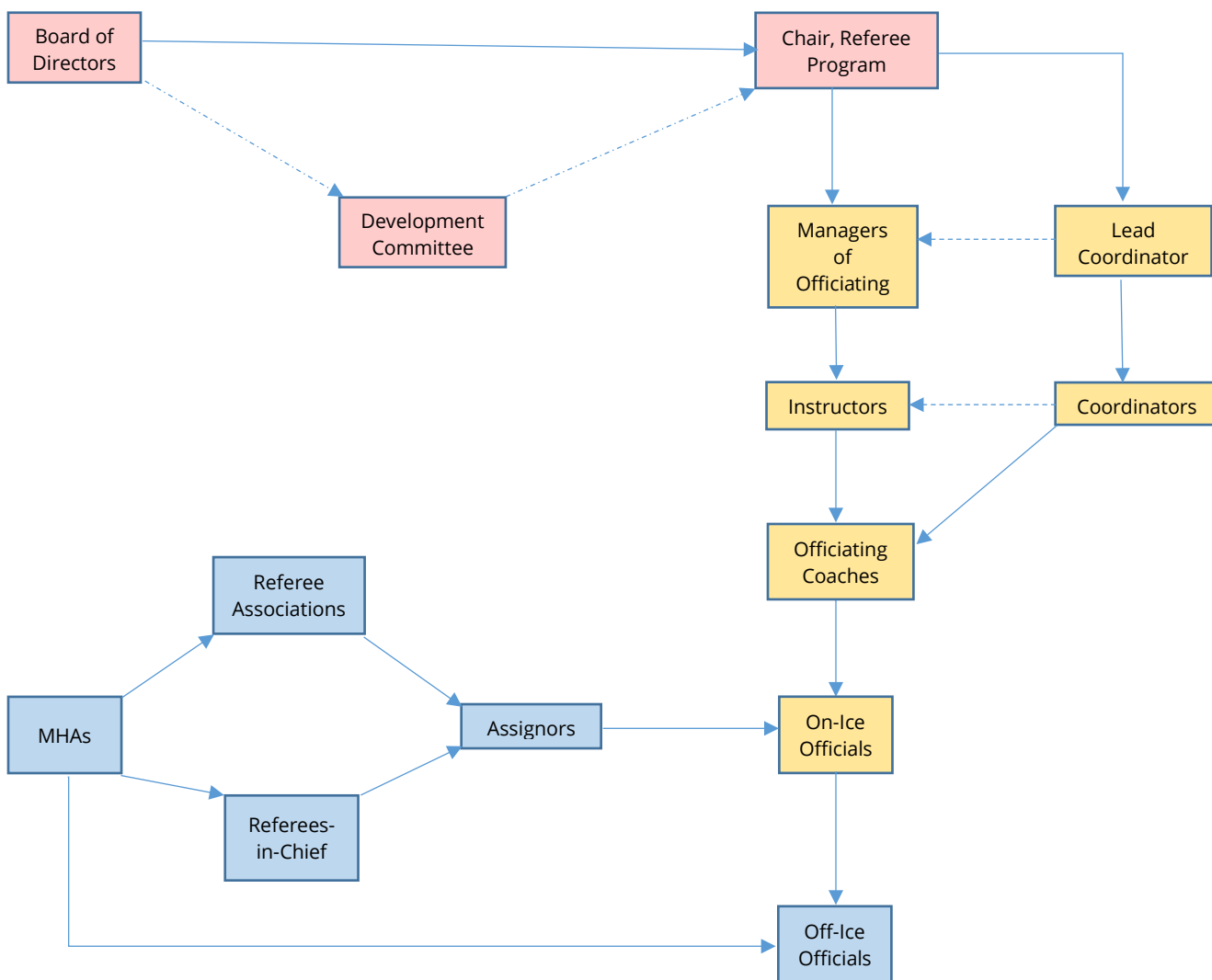
OMHA CODE OF CONDUCT	4
WELCOME TO THE OMHA REFEREE PROGRAM	5
INTRODUCTION	5
TABLE OF CONTENTS.....	6
OMHA REFEREE PROGRAM.....	9
ORGANIZATIONAL FLOWCHART	9
DEFINITIONS	12
RESOURCES	12
MEMBERSHIP.....	13
MEMBERSHIP TERM.....	13
MEMBERSHIP FEES	13
TERMINATION OF MEMBERSHIP	13
DISCIPLINE	13
OMHA REGULATIONS.....	14
OHF TOBACCO POLICY.....	18
OHF MINIMUM SUSPENSION LIST – MINOR HOCKEY	19
LEAVING PLAYER’S OR PENALTY BENCH	19
OFFICIATING MODIFIED ICE HOCKEY.....	20
OMHA OFFICIATING POLICIES.....	21

OMHA CODE OF CONDUCT POLICIES AND PROCEDURES.....	21
GREEN ARM BAND POLICY	21
PARTICIPATION AS A PLAYER OR TEAM OFFICIAL IN THE OMHA.....	22
OMHA INSURANCE (OMHA POLICY 9.0).....	23
OFFICIALS' DRESSING ROOMS.....	23
GAME REPORTS.....	23
SUSPENSION OF OMHA HOCKEY GAMES	24
CURFEWS (OMHA REGULATION 10.3)	24
VIOLATION OF HOCKEY CANADA RULES.....	24
ABSENCE OF TEAM OFFICIALS (OMHA REGULATION 4.1 b)).....	25
UNQUALIFIED OR MISSING OFFICIALS	25
RISK MANAGEMENT	25
DRESS CODE.....	25
OFF-ICE	25
ON-ICE	25
THROAT PROTECTORS: OMHA HCOP OFFICIALS (OMHA POLICY 2.2).....	26
DEPORTMENT	26
PROFANITY BY AN OMHA OFFICIAL.....	26
CONDUCT WITHIN THE ARENA	26
THE USE OF DRUGS, CANNABIS OR ALCOHOL.....	27
THE USE OF DIGITAL DEVICES IN DRESSING ROOMS.....	27
DEALING WITH THE MEDIA.....	27
DISCIPLINE OF OFFICIALS	27
UNQUALIFIED OFFICIALS REFEREEING HOCKEY GAMES	28
'RESPECT IN SPORT' CERTIFICATION (OMHA POLICY 2.6)	29
VSS/CRC FOR OMHA OFFICIALS.....	29
SOCIAL MEDIA POLICY	30
OHF UNSANCTIONED LEAGUE POLICY	30
OMHA OFFICIATING PROCEDURES	31
REGISTRATION	31
CROSS-OVERS.....	31
TRANSFERS FROM ANOTHER HOCKEY CANADA MEMBER	31
NEW OFFICIALS	32
RE-ENTERING THE OMHA AFTER AN ABSENCE	32

NO SHOWS.....	33
ALL SYSTEMS.....	33
TWO OFFICIAL SYSTEM.....	33
THREE OFFICIAL SYSTEM	33
FOUR OFFICIAL SYSTEM	33
ARRIVAL PRIOR TO ASSIGNMENTS.....	33
DURING THE GAME.....	34
IN UNIFORM	34
PRE-GAME.....	34
STANDARD OF PLAY	34
WATER BOTTLES.....	34
INJURED OFFICIALS.....	35
INJURED PLAYERS	35
EMERGENCY SITUATIONS.....	35
POWER FAILURE AT ARENAS.....	35
RESPONSE TO FIRE ALARM.....	36
HEARINGS	36
PLAYER SUSPENSIONS	36
CHAMPIONSHIP OFFICIALS	36
ADVANCEMENT OF OFFICIALS	37
APPENDICES	38
REPRESENTATIVE ASSIGNMENTS	38
LOCAL/HOUSE LEAGUE ASSIGNMENTS.....	38
OMHA SOCIAL MEDIA POLICY.....	38
HOCKEY CANADA INJURY REPORT	38
MEDICAL INFORMATION SHEET	38
MATCH PENALTY REPORT.....	39
MALTREATMENT REPORT	39

OMHA REFEREE PROGRAM

ORGANIZATIONAL FLOWCHART



OMHA BOARD OF DIRECTORS

Elected members of the OMHA Board, responsible for everything within their defined territory and scope of responsibilities.

OMHA DEVELOPMENT COMMITTEE

An operational sub-Committee of the OMHA Board, comprised of Board members, OMHA staff and the various program Chairs.

CHAIR, REFEREE PROGRAM

An appointment of the OMHA Board, responsible for the entire Officiating Program within the OMHA, including operations, adherence to national and Branch directives, and selection of various operational personnel.

MANAGERS OF OFFICIATING

Selected Instructors, chosen to manage delivery of the Officiating Program within defined territories and to act as a liaison with Leagues, MHAs, and Regional Directors.

LEAD CO-ORDINATOR

Selected Co-ordinator, chosen to manage the delivery of various logistical and administrative functions vital to the operations of the program.

INSTRUCTORS

Selected Officiating Coaches, chosen to manage local delivery of the Officiating Program and to instruct at Officiating Program clinics.

CO-ORDINATORS

Selected Officials, chosen to perform various logistical and administrative functions vital to the operations of the program.

OFFICIATING COACHES

Selected Officials, chosen to evaluate, coach, direct and promote on-Ice Officials, ensuring proper development and evolution occurs.

ON-ICE OFFICIALS (REFEREES)

Registered and Certified Officials who are accredited to officiate OMHA hockey.

OFF-ICE OFFICIALS (TIMEKEEPERS, ETC)

Timekeepers, scorers, goal judges, penalty timekeepers, and announcers who participate in OMHA hockey games by providing administrative assistance during the game.

OMHA FACT FINDER

Appointed by OMHA Risk Management Manager – May contact officials to discuss a Hockey Canada ITP (Independent Third Party) complaint or a Fact Find for the OMHA.

With the exception of the Board of Directors, any person located within this structure may hold multiple positions. Various criteria exist to maintain position or progress upwards through the hierarchy, which may limit individual advancement. In most cases, the term of position is reviewed annually.

Minor Hockey Associations (MHAs) determine whether or not to utilise the services of a Referee Association. Ultimately, the MHA is responsible to ensure game support staff (on & off-ice officials) are scheduled for competition.

DEFINITIONS

OMHA – Ontario Minor Hockey Association Inc. (or such other name as the OMHA may in the future legally adopt).

HCOP – Hockey Canada Officiating Program

Associate Member – Shall refer to all individuals affiliated with the OMHA who assist in the administration, instruction, and/or operation of development programs, league operations, Convener duties, and game officiating and who come under the supervision of a Regional Director, Development Program Chair and/or OMHA Officer.
(All HCOP officials are classed as “Associate Members”).

Board – The Board of Directors (elected or appointed) of the OMHA.

“in good standing” – Shall refer to a member who has paid any membership dues or other fees owing to the OMHA and who is not the subject of a disciplinary investigation or sanction by the OMHA.

RESOURCES

The OMHA web site has several resources to assist and inform Officials. Topics include Recertification, Education, and Resources to name a few. Several downloadable documents and forms are available at: <https://www.omha.net/referee>

MEMBERSHIP

(Please note: The following document has been structured specifically for the officiating program. The OMHA Manual of Operations should be referred to for complete details of all Bylaws, Regulations, Policies and Procedures.)

MEMBERSHIP TERM

The term for all HCOP officials shall commence on **September 1st** and will terminate on **August 31st of the following year**. This term runs concurrently with the OMHA insurance program. The term of membership is renewable on an annual basis and tendered via the HCOP membership registration form.

MEMBERSHIP FEES

Shall be established annually by the OMHA. Refund requests must be received by the OMHA in writing before December 1st. No refunds will be processed prior to **December 15th**, and are subject to an administrative fee.

TERMINATION OF MEMBERSHIP

Membership in the OMHA is not transferable and shall terminate upon resignation, sanction or death. A member whose conduct is considered by the Board to be contrary to the Hockey Canada/OMHA Code of Ethics or Conduct shall be asked by the Board to explain or justify their actions. If the member is unwilling or unable to do so, the Board may impose sanction(s), ask the member to resign or may terminate membership.

DISCIPLINE

Membership in the OMHA, as well as participation in the activities of the OMHA, brings with it many benefits and privileges. At the same time members and participants are expected to fulfill certain responsibilities and obligations, including but not limited to complying with the Code of Conduct, Policies and Procedures of the OMHA. The OMHA Code of Conduct, Policies & Procedures, and the Officials Membership Handbook identify the standard of conduct which is expected of members. Individuals who fail to meet this standard may be subject to disciplinary sanctions.

OMHA REGULATIONS

12.0 GAME OFFICIALS

12.1 Qualifications

- a) For all OMHA sanctioned programs, officials must be registered with the OMHA, as HCOP officials as per OMHA regulations.
- b) All OMHA sanctioned games shall be officiated as per **Regulations Appendix B** (Representative Assignments) or **Regulations Appendix C** (Minor Development, Local, and House League Assignments).
Note 1: In the four (4) official system, the other referee must be certified Level 3 or higher.
- c) Refer to **Regulations Appendix B** for On-Ice Officials Representative Assignments Chart.
- d) Refer to **Regulations Appendix C** for On-Ice Officials Minor Development/Local/House League Assignments Chart.
- e) For development purposes, on the recommendations of the Area Officiating Coach and with the approval of the Area Referee Instructor and the Regional Director, some Officials may be requested to work a higher category or division of hockey as per **Regulations Appendix B** and **Regulations Appendix C**. In such a case as described herein, an Area Officiating Coach or Instructor must be in attendance at the game(s).
- f) A Level 1 (House League) Official is one who:
 - i) is fourteen (14) or fifteen (15) years of age
 - ii) has completed either a HCOP Entry Level, or HCOP House League Recertification Clinic.
- g) A Registered Official is one who:
 - i) is a minimum of fifteen (15) years of age with one (1) year's experience at Level 1 or is a minimum of sixteen (16) years of age.
 - ii) is a HCOP Level 2 official or higher.
 - iii) has attended and completed all sessions of a current season HCOP clinic.
 - iv) has written and/or passed the current HCOP exam (as appropriate for their level.
 - v) has paid the current OMHA registration fee.
- h) A Certified Official is one who:
 - i) has received a minimum of one (1) Evaluation that is satisfactory to the Officiating Coach, and
 - ii) has been recommended for Certification.

12.2 Restrictions

- a) In all OMHA competition, on-ice officials will be permitted to work a maximum of six (6) games per day. This limit can be extended to eight (8) games under the specific conditions outlined in **Regulation 12.2 b) Note**.
- b) On-ice officials will be permitted to work a maximum of three (3) consecutive games before adhering to a rest period as described in **Regulation 12.2c)**.
Note: On-ice officials will be permitted to work a maximum of four (4) consecutive games, provided that the total duration of these games does not exceed periods lengths of 10-10-15 minutes each. Following this, officials must adhere to a mandatory rest period as detailed in **Regulation 12.2 c)**.
- c) On-ice officials who work two (2) consecutive games must adhere to a minimum rest period of two (2) hours before working the next scheduled assignments.
For officials working three (3) consecutive games, a minimum rest period of three (3) hours is mandatory before they can proceed to their next scheduled assignments.
If Officials are assigned four (4) consecutive games, provided none of the games exceed the standard 10-10-15 minute periods, they must still observe a minimum rest period of three (3) hours before taking on any additional assignments.
- d) Officials who fail to comply with any part of this Regulation shall be subject to disciplinary action by the OMHA Chair, Referees.

12.3 Age of Officials

Age for Officials shall be determined as at **December 31st** of the current playing season. All On-Ice Officials must be at least two (2) years older than the division age limit (see **Regulation 2.1**) they are officiating. All Officials eighteen (18) years of age or older on or before **December 31st** of the current playing season and are carded as a HCOP Level 2 or higher are eligible to officiate any level of OMHA hockey as per OMHA **Regulations Appendix B** (Representative Assignments) or OMHA **Regulations Appendix C** (Local, Minor Development and House League Assignments).

12.4 Rates

- a) The following Minimum rates apply for all OMHA representative games. Any overtime periods are included in the game lengths.

Two Official System

Game Lengths	10/10/10	10/10/15	10/15/15	15/15/15
U9 & Below	\$24.00	\$26.00	\$28.00	\$30.00
U10/U11	\$25.00	\$27.00	\$29.00	\$31.00
U12/U13	\$28.00	\$30.00	\$32.00	\$34.00
U14/U15	\$29.00	\$31.00	\$33.00	\$35.00
U16/U18	\$30.00	\$32.00	\$34.00	\$36.00
U21	\$31.00	\$33.00	\$35.00	\$37.00

Three Official System

Game Lengths	10/10/10	10/10/15	10/15/15	15/15/15	15/15/20	15/20/20	20/20/20
U13 & Below							
Referee	\$32.00	\$34.00	\$36.00	\$38.00	\$40.00	\$42.00	\$44.00
Linesman	\$26.00	\$28.00	\$30.00	\$32.00	\$34.00	\$36.00	\$38.00
U14 & Above							
Referee	\$36.00	\$38.00	\$40.00	\$42.00	\$44.00	\$46.00	\$48.00
Linesman	\$28.00	\$30.00	\$32.00	\$34.00	\$36.00	\$38.00	\$40.00

Four Official System

Game Lengths	15/15/15	15/15/20	15/20/20	20/20/20
Referee	\$42.00	\$44.00	\$46.00	\$48.00
Linesman	\$34.00	\$36.00	\$38.00	\$40.00

Note 1: A four (4) official system is only permitted at U14 and above.

Note 2: OMHA officials shall not officiate in a "one official" system.

12.5 Mileage

Mileage will be paid at the annual Canada Revenue Agency (CRA) mileage rate per Kilometre each way with all Officials in one car wherever possible. The posted CRA mileage rate as of September 1 will remain in effect for the duration of that entire playing season.

Note 1: When the game(s) require 2 or 3 officials one mileage shall be paid. When the game(s) require 4 officials a second mileage shall be added.

Note 2: Any person charging or accepting more than the above rates, will be subject to immediate sanction until their case has been dealt with by the OMHA Board.

12.6 Referee Responsibilities

- a) After each game the referees shall be responsible to ensure the official game report is filled in properly and entirely. Failure to receive any official game report by a team official shall not exempt such official from any subsequent disciplinary action.
- b) All maltreatment and match penalties in all sanctioned games must be reported by the Game Officials to the Regional Director.

12.8 Reports

In games when the referee is required to write a report in specific instances as required by the Rules, such reports will be made available to the Centre involved at their request. Such request must be in writing to the Regional Director from the President and Secretary of the Centre's Minor Hockey Association.

OHF TOBACCO POLICY

No participant (player, team official, on-ice official or off-ice official) may use tobacco products, chewing tobacco, smokeless tobacco or vaping during any league, playoff, exhibition or tournament game or practice (on or off ice) sanctioned by any Member Partner.

Any player or bench official found to be using tobacco products, chewing tobacco, smokeless tobacco or vaping during a game will be ejected from that particular game.



The full policy can be located at:

Ejection under this policy will be recorded as **GrM.**

OHF MINIMUM SUSPENSION LIST – MINOR HOCKEY

The OHF lists an infraction, which the OHF wants reported as a Game Misconduct, which is not covered by Hockey Canada in the playing rules.

LEAVING PLAYER'S OR PENALTY BENCH

The Head Coach of a team where a player is penalized under Hockey Canada rule 10.4 (e), shall be assessed a Game Misconduct after the game has completed. The Head Coach will not be removed from the game for this violation.

EQUIPMENT

11.1 Mandatory

All mandatory equipment must be worn during all games and practices.

11.2 Sweaters

No team shall be permitted to wear sweaters with vertical stripes.

11.3 Helmets

Refer to **HC Playing Rule 3.6 – Protective Equipment**.

Team Officials – Refer to **Policy 3.4.1**.

11.4 Throat Protectors

a) Refer to **HC Playing Rule 3.6 c) – Protective Equipment**.

b) All goaltenders must wear a BNQ approved throat protector as stated in **Regulation 11.4a)** and they must wear a throat guard fastened in such a way as to protect the throat. (It may not be fastened in any manner that will void the CSA approval of the mask and/or helmet).

11.5 Mouth Guards

Refer to **Hockey Canada Playing Rule 3.6 – Protective Equipment** and **OMHA Policy 3.4.4**. (Specifications)

OFFICIATING MODIFIED ICE HOCKEY

The OMHA uses both cross-ice and half-ice configurations for U9 & younger hockey programming. Both modified ice hockey offerings allow the use of a single Official, or a 2-Official system as determined by the host centre. Where games are operated on both halves of the ice, each half needs its own Official(s).

This level of hockey does not keep score and does not use an OMHA Game Report. In lieu of this, a Participant List is completed to account for who has taken part in the match. Officials are asked to complete the Participant List (name, signature, HCOP number) to confirm their attendance, and to account for any insurance coverage.

Additionally, several options are available for how this level of hockey is delivered. Be sure to verify which options are being used locally when accepting assignments for modified ice hockey.

OMHA OFFICIATING POLICIES

OMHA CODE OF CONDUCT POLICIES AND PROCEDURES

The Code of Conduct and all matters pertaining to Bullying, Abuse, and Harassment, are contained in the OMHA Code of Conduct Policies and Procedures. Because all Officials are impacted by these, each Official should familiarize themselves with the specific rights and details of these Policies. Use the OMHA Complaint Form to report alleged violations the OMHA Code of Conduct Policies and Procedures.

GREEN ARM BAND POLICY

General

Abuse and harassment of Officials remains an issue within the world of hockey. While the vast majority of our team officials, players and spectators treat officials with respect, sometimes this is not always the case. In an effort to raise awareness regarding our younger less experienced officials, the OMHA HCOP is introducing the green armband policy to all officials under the age of 18. It is hoped that with this initiative it will reduce some of the challenges and barriers that our younger officials face.

The Policy:

The green armband must be worn by any On-Ice Official under the age of eighteen (18) years of age.

The Official may stop wearing the green armband as of their 18th birthday.

The green armband is to be worn on the left arm, between the elbow and shoulder.

If in the role of the Referee, the green armband is to be worn over the red armband.

The green armband is to be worn regardless of the age of the players involved in the game and of the competition level of the game.

The OMHA requires all stakeholders to play a role in reducing abuse and harassment towards all officials.

PARTICIPATION AS A PLAYER OR TEAM OFFICIAL IN THE OMHA

Any Official who is suspended while participating as a Player or Team Official **will be ineligible** to officiate until the suspension is satisfied. Carry-over suspensions, and suspensions which extend beyond playing eligibility will be reviewed individually by the Official's Manager of Officials.

Similarly, any Official who is suspended as an Official **will be ineligible** to participate as a Player or Team Official until the suspension is satisfied.

Officials shall not officiate any game in which a participating player or team official is a direct family member, close business relation, or currently a part of that division as a coach or player. Officials are asked to declare to their Officiating Coach any potential conflict of interest through family, friendship or business. *(For example: An Official should not officiate a game where their employer/boss is the Head Coach)*

Individuals will not be allowed to officiate in tournaments in which they also participate as a Player or Team Official. Additionally, Officials who act as Players or Team Officials will not be scheduled into Playdowns at the same age and category in which they are carded as a Player or Team Official. *(For example: An Official who coaches U11 A hockey will not be scheduled into Playdowns in U11 A)*

OMHA INSURANCE (OMHA POLICY 9.0)

Direct any inquiries through the OMHA office. Terms of Insurance Coverage are from **June 30th** to **June 30th** of the following year.

All insurance registrations must be submitted to OMHA prior to participation.

Claims: All incidents must be reported immediately to the OMHA office. For any information on insurance contact the OMHA office.

OFFICIALS' DRESSING ROOMS

These are off limits to everyone except the game officials. Only the Off-Ice Officials, Officiating Coaches, and Regional Directors are permitted, as required.

Officials of a dissimilar gender may not change, or shower, in the same room at the same time. If separate facilities are not available, each party is expected to manage the risk appropriately with respect and dignity.

GAME REPORTS

Each year, new timekeepers arrive. Some have little experience and no training on to how to complete game reports, or the proper coding of infractions. On-ice Officials should willingly provide advice and guidance. **On-ice Officials are ultimately responsible to ensure that the Official Game Report is accurate.**

1. The Referee(s) must check the game report after the game to ensure all penalties and codes are reported as called. If errors are found and/or additional penalties must be added to the game report after the electronic game report has been uploaded, then the official must **immediately** contact the Regional Director to explain the error.
2. All **Major, Misconduct, Game Misconduct, Gross Misconduct** and **Match** penalties must be reported, with details surrounding the penalty locked into the notes section of the electronic game report. This will also include any incidents, injuries, and unusual circumstances.
3. If a penalty for **Discrimination (Rule 11.4)** or **Match Penalty** is assessed, the Referee must complete the appropriate report (found in the appendices of this manual) and forward it to the Regional Director without delay. The Referee making the call must also contact the Regional Director within 24 hours, to detail the events.

SUSPENSION OF OMHA HOCKEY GAMES

All OMHA games should be completed, if and where possible. At times, unexpected circumstances may necessitate the suspension of a hockey game. Full details of any suspended game must be reported to the Regional Director.

CURFEWS (OMHA REGULATION 10.3)

As noted on the Official Game Report, curfews may apply only in Exhibition, League, and Tournament games. The curfew time shall be judged by a mutually agreed upon clock. If an Arena Manager terminates the availability of ice time, this should be noted separately.

VIOLATION OF HOCKEY CANADA RULES

Rule 2.2(a)	A minimum of six (6) eligible players in uniform on each team (which may or may not include a Goaltender) are required to start a game.
Rule 6.1(e), Interpretation 3	Where a team is unable to place the exact number of players on the ice to which they are entitled whether due to penalties or injuries, the Referee shall suspend the game and report this incident to the appropriate Member or league.
Rule 10. 8	<p>A team is Refusing to Start Play when:</p> <ul style="list-style-type: none"> i. They are withdrawn from the ice and/or refuse to place the correct number of players on the ice, after being clearly warned by the Referee that such an action is no longer Delay of Game but rather Refusing to Start Play. ii. A player or team official refuses to leave the bench or playing area, after they have been assessed a Game Ejection, Game Misconduct penalty, Gross Misconduct or Match penalty. <p>If the team does not return to the ice, two minutes after being ordered to do so, the game or series will be suspended. The Referee will report full details of the incident to the appropriate Member or league.</p> <p>If a team is Refusing to Start Play a second time in the same game, the two-minute warning will not be given and the game or series will be immediately suspended. The Referee will report full details of the incident to the appropriate Member or league.</p>

ABSENCE OF TEAM OFFICIALS (OMHA REGULATION 4.1 B))

Where an OMHA team has only one team official remaining on the bench and that team official leaves his position for any reason, the referee shall enlist the supervisory services of a registered team official from that same Association, who is in attendance at the game. If an appropriate designate cannot be found, the game shall be suspended. **Note – Any new team official so enlisted shall add their name on the official game report.**

UNQUALIFIED OR MISSING OFFICIALS

As noted elsewhere within this publication, this is possible during a second offence.

RISK MANAGEMENT

If an Official feels that there is an unsafe condition, local calamity, or other irreparable issue, they may suspend a game. (*For example: unsafe ice, rink conditions, blackout, etc.*) In these situations, the Arena Manager should be consulted to see if the condition can be cleared without undue delay. The Official, when conferring with the Arena Manager, should have a witness on hand to back up their version of what was said.

DRESS CODE

OMHA Officials are expected to uphold a high standard of dress and personal hygiene when on assignment and while enroute to, during, or enroute from OMHA functions.

OFF-ICE

For all OMHA Exhibition, Regular Season and Tournament games the Officials shall be appropriately dressed in casual business attire, as a minimum, with some restrictions. Clothes that are not acceptable include: jeans; track pants; jogging suits; specific team logo items like jackets and headwear; ball caps; sandals; or running shoes.

For all Playoffs and Championships sanctioned by the OMHA, as a minimum, Officials shall be appropriately dressed in business attire.

ON-ICE

While on the ice, all Officials shall wear black trousers, a black and white striped sweater with current cresting, and a black CSA-certified hockey helmet, and a CSA-certified visor. The Referees in the three- and four-official system shall wear a four-inch arm band with a one-inch black stripe on each side of the band, on each arm above the elbow. Officials' equipment should be clean and properly fitted.

OMHA cresting includes the OMHA crest (worn on the left chest), Hockey Canada patch (worn on the right upper sleeve), and the OHF/flag combination crest (worn on the left upper sleeve). Any special commemorative patches are subject to special permission and are to be worn on the upper right chest, opposite the OMHA crest.

The crests of the OMHA, OHF, and Hockey Canada contain trademarked properties, and as a result should only appear in approved settings. Use in non-sanctioned hockey may incur disciplinary action for trademark infringement.

In arenas which experience severe conditions, black gloves are permitted.

THROAT PROTECTORS: OMHA HCOP OFFICIALS (OMHA POLICY 2.2)

In the interest of ensuring the safest possible environment for all participants in the OMHA, the OMHA Board has adopted the following policy:

That the wearing of a BNQ approved throat protector be mandatory for all OMHA HCOP on-ice Officials.

DEPORTMENT

Any official, who is accused of or found guilty of the following infractions, will be reviewed by the Chair, Referee Program or their designate, with possible disciplinary actions being taken.

PROFANITY BY AN OMHA OFFICIAL

The OMHA will not tolerate officials using profane language when speaking with players, coaches, managers, trainers or spectators at any time. There is absolutely no defense for this type of behavior. As a precaution, when explaining something to a coach or player, have the other Referee or a Linesperson listen, so there can be no accusations of foul language later. Remember to respond to disrespect with respect.

CONDUCT WITHIN THE ARENA

It is expected that officials will obey all local regulations within the arena and dressing rooms. This includes, but is not restricted to, adherence to smoking bylaws, conforming to use of cell phones/PDAs/cameras regulations, and adherence to alcohol consumption bylaws. The conduct of all Officials must be beyond reproach.

Officials who witness gross incompetence, fraud, or significant deviations from standard officiating practices committed by another Official are encouraged to notify their Officiating Coach with details. We cannot allow poor conduct by our colleagues.

THE USE OF DRUGS, CANNABIS OR ALCOHOL

The OMHA forbids the use of recreational drugs, cannabis, or alcohol on the day of a game, prior to officiating an OMHA hockey game. Given the sensitivity to issues of liability, where officials are ultimately responsible for on-ice safety, issues related to violations will be seriously handled.

THE USE OF DIGITAL DEVICES IN DRESSING ROOMS

In growing numbers, these devices are being manufactured with cameras that allow photographs and video to be taken and shared electronically, without knowledge or permission, during regular hockey activities in change rooms, shower areas and/or bathrooms. If someone uses a device this way and captures a photo or video image, this may constitute a violation of personal privacy but may also be a criminal offence. These devices may be used for personal music.

DEALING WITH THE MEDIA

If an Official is approached by any member of the media, to make comments or respond to questions (be it formal or informal), Officials should simply (and politely) decline the opportunity and redirect the media agent to the OMHA office.

The following is an example of what should be said:

"As I hope you can appreciate, my job is to referee hockey games. Beyond that, if you are looking for personal opinions or the official position of the OMHA on any particular subject or issues, it would be best if you contacted the Executive Director of the OMHA. I hope you understand."

We, of course, understand that any individual has the right to hold personal opinions on any number of subjects. That said, when acting on behalf of the OMHA, it is critically important not to say anything or act in a manner that could be perceived as contrary to our Code of Conduct or any other policy.

DISCIPLINE OF OFFICIALS

OMHA Regulation and/or Policy violations are subject to potential discipline. Discipline may include, but may not be limited to, probation, suspension, and/or removal from membership.

Any Official who officiates an OMHA game and is not in good standing with the OMHA will be suspended for the remainder of that hockey season. "Good standing" shall be defined as having registered and fully paid the appropriate fees, attended and passed the current clinic requirements, provided the necessary security clearances, and not be serving a suspension with the OMHA and/or its hockey partners.

Concurrently, as dictated by **OMHA By-Law One section 9.4c**), the OMHA Board have the power to suspend, expel, or take disciplinary action against any game Official or individual for any breach of the OMHA By-laws or of any decision, policy or regulation of the Board.

UNQUALIFIED OFFICIALS REFEREEING HOCKEY GAMES

The problem of Officials working in games for which they are not qualified for is not a new one. The most common problems are:

1. Officials working games for which they are not qualified by certification level (as per **Regulation 13.1c**) and/or **13.1d**).
2. Officials working games in which they are not old enough to be officiating (as per **Regulation 13.4a**).
3. Officials working 1-official system games (other than modified-ice hockey).

The OMHA has adopted the following policy to deal with the above situations.

1. Violations may be found either by firsthand observation by any one of the following: OMHA Officiating Program Officiating Coach, Instructor, Coordinator, Manager, Chair-Referees Program, Regional Director; or by having the official's name appear on a game sheet for a game in which they are not qualified.
2. For instances of an Official working 1-official system hockey, or not being old enough to participate, if found by an OMHA Officiating Coach, Instructor, Coordinator, Manager, Chair-Referees Program, or OMHA Board Member, the game will be stopped immediately. The Official will be suspended.
3. If unqualified by level, the Officiating Coach may stay and supervise the official in that hockey game. The Chair, Referees Program will be notified, and a letter will be sent to the following:
 - a) Offending Official
 - b) Town MHA Contact
 - c) Town Assigner
 - d) Manager of Officials
4. If a second offence occurs, the Officiating Coach will stop the game immediately. The Official will be suspended for a minimum of 2 weeks.
5. For a third offence, the game will be stopped, and the official will be suspended indefinitely. This suspension will necessitate a hearing to determine length.
6. Serious or flagrant violations may dictate the immediate suspension of the offender at any time, regardless of the previous history.

‘RESPECT IN SPORT’ CERTIFICATION (OMHA POLICY 2.6)

All HCOP Officials (Referees & Linespersons) must be certified in the Respect in Sport “Activity Leader” program, “Official” program or the equivalent “Speak Out” program certification, as a condition of their eligibility to officiate.

VSS/CRC FOR OMHA OFFICIALS

On-Ice Officials under the age of 18 are not required to submit a Criminal Record Check (CRC). On-Ice Officials 18 years of age and over are required to submit a Vulnerable Sector Screening Check (VSS) on their first available submission. After that first submission, Officials can subsequently provide a CRC upon renewal. The renewal period for your CRC is every 3 years. The expiry date is universally set as May 1, after the 3rd season of hockey regardless of what the date is on the document.

Administration of this policy is performed by the OHF. The tracking of status will be entered into the On-Ice Official’s Hockey Canada Registry (HCR) online record. Completed forms are to be submitted directly to the OHF offices, following the procedures outlined by the OHF and communicated via the annual HCOP membership recertification form. Clinic registration will not be possible until the OHF receives either a completed document, or a suitable proof of application, and subsequently notifies the OMHA that registration may commence.

For Officials crossing-over from another Hockey Canada Member, the Official’s HCR record must indicate the appropriate VSS/CRC. Delaying this requirement will delay the processing of the Official’s transfer process, which will in turn delay the Official’s ability to participate in any OHF program.

Non-compliant officials will be subject to disciplinary action. The suspension and reinstatement of all officials will be at the discretion of the OHF. The OMHA will be notified as soon as the official is either deemed ineligible and/or reinstated.

In Ontario, Police Services normally charge a fee for record checks. Alternatively, the OHF also allows a third-party supplier to perform and supply record checks, again at additional cost. Officials are responsible for that expense.

Please submit all documentation to the OHF directly, at:

**Ontario Hockey Federation,
Unit 9, 400 Sheldon Drive,
Cambridge, Ontario N1T 2H9
Attention: Criminal Record Check Inspector**

SOCIAL MEDIA POLICY

The ever-growing impact of social media, in all its forms, has had a profound impact upon the game of hockey, and the OMHA. At its best, social media can create a positive experience for all participants by enhancing every facet of the game. At its worst, it can be the vehicle used to dispatch hatred, abuse, and intimidation. The OMHA policy regarding the use of all social media outlets is attached in the Appendices. Please refer to it for specific details and guidance.

OHF UNSANCTIONED LEAGUE POLICY

The OHF respects an individual's right to choose between Hockey Canada sanctioned hockey, and non-sanctioned hockey at the beginning of each season. Please understand the ramifications of your choices, as it may pertain to further action.

Participants who choose to partake in non-sanctioned hockey beyond the annual OHF determined 'cut-off date', will lose all OHF privileges for the remainder of the season. The full OHF policy can be found at the following link: <https://www.ohf.on.ca/rules/by-laws-and-policies>

OMHA OFFICIATING PROCEDURES

REGISTRATION

Prior to the start of each hockey season, all OMHA Officials must register with the OMHA office. To do so, Officials must remit a completed Membership Form, along with the appropriate registration fee. These steps are required before an Official can accept any assignments for the current playing season. **Failure to execute these steps will violate OMHA Regulation 18.1a).** This will mean that the Official will be considered to be “not in good standing” and may be subject to further discipline.

Each Official is responsible for completing a Membership Clinic. Any Official who does not attend a Membership Clinic and pass the national exam is deemed ineligible to officiate in the current hockey season.

NOTES:

- Any official who does not receive their registration package from the OMHA Office by mid **JULY**, should contact the office at **905-780-6642**, or omha@omha.net.
- Officials are reminded to contact the OMHA Office regarding any change of contact information (name, address, phone number, email address, etc.).

CROSS-OVERS

A “Cross-Over” describes an official who attends a clinic held by one OHF Partner (i.e., GTHL/OWHA/ALLIANCE/OHA) and wishes to register with another OHF Partner. Cross-Over fees will be detailed in the registration letter. An Official wishing to Cross-Over into the OMHA must present registration payment, CRC/VSS (as appropriate), and indicate where they attended their clinic. That attendance must be able to be verified via the HCR. The OMHA reserves the right to refuse any applicant. Depending on the submission, the OMHA may require attendance at all or part of an OMHA clinic to satisfy its requirements. An Official new to the OMHA, will be issued OMHA cresting and a card/number. Cross-Over registrations must be processed online through the OMHA office before October 31st. Cross-Over registrations received after November 1 will be levied a ‘late filing’ fee (in addition to the Cross-Over fee), which will be based upon the date of application. The onus for completing this process lies with the individual official.

TRANSFERS FROM ANOTHER HOCKEY CANADA MEMBER

Similar to Cross-Overs, an Official transferring into the OMHA from another Hockey Canada Member will be asked to provide details of their certification from their departing Member via the Official’s HCR. Depending upon those details, the OMHA will advise the Official of what additional registration steps are required.

NEW OFFICIALS

A new Level I Official:

1. Is 14 or 15 years of age as of December 31st of the current playing season.
2. Has paid the current OMHA Registration Fees.
3. Has complied with the age-appropriate Rowan's Law documentation.
4. Has completed an HCOP Entry Level Clinic or School.
5. Has passed the current HCOP Exam.

A new Level II Official:

1. Is at least 16 years of age as of December 31st of the current playing season.
2. Has completed the Respect-in-Sport - Officials course.
3. Has paid the current OMHA Registration Fees.
4. Has complied with the age-appropriate Rowan's Law documentation.
5. Has submitted an appropriate CRC/VSS (if 18 or older)
6. Has completed an HCOP Entry Level Clinic or School.
7. Has passed the current HCOP Exam.

RE-ENTERING THE OMHA AFTER AN ABSENCE

The OMHA recognizes that officiating is not the only activity or priority in one's life. As a result, the OMHA has the following policy regarding officials who have taken a leave of absence and wish to re-enter the HCOP program.

All OMHA officials leaving the HCOP program (not recertifying) for a period of no more than one playing season will retain all HCOP credentials (including certification) provided they register, attend, and successfully complete a Membership Clinic the following season.

All OMHA officials who have left the HCOP program (have not recertified) for two or more consecutive playing seasons must re-enter through an Entry Level program (single day or OMHA Referee School). Officials who fall into this category will be accredited a Level "2" certification providing they register, attend, and successfully complete all clinic requirements.

NOTE: Officials who leave the program Level 3 and above will be re-instated as a Level 2 unless a written appeal is made to the Chair, Referees Program. Once an appeal is entertained, the decision of the Chair, Referees Program will be final.

NO SHOWS

When an Official(s) does not show up for an OMHA game, for whatever reason, the following procedures will go into effect:

ALL SYSTEMS

Work with the local Center and try to find qualified OMHA officials to work the game.

TWO OFFICIAL SYSTEM

One (1) Referee system is **NOT PERMITTED**. The game must be suspended, and a full report must be filed with the appropriate Regional Director.

THREE OFFICIAL SYSTEM

Providing that both officials are eligible as per **Regulation 13.1b)** then the game should be completed using the two-official system. If the originally scheduled official, or a replacement, is expected to arrive during the game, then the game may be started using the one Referee and one Linesperson system until the third official arrives. The joining official would join as a Linesperson.

If they are not eligible, then the game must be suspended.

FOUR OFFICIAL SYSTEM

If the second Referee is missing then the game should be completed using a three-official system, providing that the remaining Referee is qualified to work under **Regulation 13.1b)**. If the originally scheduled Referee arrives during the game, the joining official would join at the end of the current period, as the second Referee. If the remaining Referee is not qualified, then the game would have to be officiated using the two-official system with the remaining scheduled Referee as a member of that system. The more senior Linesperson (as determined by card number) would also remain in the game.

If a Linesperson is missing, then the more junior Referee (as determined by card number) will assume the duties of the missing Linesperson. The game will be completed using a three-official system. If the originally scheduled Linesperson arrives during the game, the joining official would join at the end of the current period, and the reassigned Referee would return as the second Referee.

ARRIVAL PRIOR TO ASSIGNMENTS

Generally, the OMHA expects Officials to be onsite 30 minutes before the scheduled game time. Other factors or commitments may sometimes require a deviation from this practice, and in such cases those expectations will be clearly communicated.

DURING THE GAME

IN UNIFORM

Officials should be 'game ready' before entering the ice surface. This includes BNQ approved throat protectors, helmets & face shields being properly worn and fastened, jerseys zipped up, and chin straps at an acceptable size (not more than 1 finger width from chin).

PRE-GAME

Officials should be verifying the number of Players on the ice, and the number of Team Officials occupying the benches, to the info recorded on the Official Game Report. Along with the Hockey Canada rules detailing the maximum number of players to be dressed for a game, all U21 teams are allowed to dress twenty (20) players for any game within the OHF (OMHA **Regulation 4.1a**). Each team should have a minimum of one (1) carded Coach, and one (1) carded Trainer at the start of each game. If a team does not have a carded Trainer listed, then they must ask their opponent's Trainer to provide coverage. This should be noted on the game report. Officials should note when a goaltender is marked as an "AP" on the roster, and that goaltender plays in the game. If the "AP" designated goaltender does not play, then no action is required.

STANDARD OF PLAY

Officials are to be guided by the principle that violence and intimidation are NOT part of the game and shall take action to eliminate both from every game they officiate. The Chair, Referees Program reserves the right to discipline or remove from the OMHA officiating staff, officials who do not follow or support OMHA standard of play directives, instructions, and statements of expectations or initiatives. Questions or suggestions about the OMHA standard of play shall be directed to the Chair, Referees Program

WATER BOTTLES

Water bottles are allowed on the top of the net. They are not there for use by the officials. If you wish, bring your own water bottle and leave it at the penalty bench.

INJURED OFFICIALS

When an Official requires treatment for an injury, the designated Home team's Safety Person/Trainer will attend to the Official. This may mean that the team's Emergency Action Plan (EAP) needs to be activated. In cases of serious injury, both team's Safety Person/Trainer may be required and may attend to the injured official.

In cases where the injured Official is unable to communicate with the EMS personnel, it may be necessary to provide the EMS responders with the Official's Medical Information Sheet. This should be found in a sealed envelope in the injured Official's equipment bag.

In cases where an Official is required to leave the game because of injury, if a replacement Official is immediately available, they should join the game in progress. In games using a 3 or 4 Official system, the replacement would join as a Linesperson, unless the remaining Officials are unable to act as a Referee.

INJURED PLAYERS

When an Official stops play because of an injured Player, and the Trainer is summoned, one official should stay with the injured Player to advise the Trainer of any information that the Player may have relayed. If the Trainer begins to verbally berate or chastise the Officials, the Officials should leave the area. Otherwise allow the Trainer to assess the injury, and then ask if there is any assistance that can be offered (stretcher, ambulance call, etc.). In order to carry out the team's **Emergency Action Plan (EAP)**, it may be necessary for a Trainer to have additional personnel at ice level or on the ice. Officials should ensure that the required personnel are allowed to execute their functions, but that only those people required by the Trainer are included in the activity. Other spectators should remain in the spectator areas. Whenever an ambulance is required, the teams should be sent to their dressing rooms until play is to resume.

EMERGENCY SITUATIONS

POWER FAILURE AT ARENAS

If a power failure occurs during a hockey game, have the Rink Manager contact the Hydro Company for information. If an ETA for correction is supplied, consult the Coaches and Rink Manager to determine if the game can be completed. If you do not get an ETA within 30 minutes, then meet the Coaches and Rink Manager and inform them that the game will be suspended one (1) hour from the time the power went out. The Rink Manager should be involved in all decisions concerning ice availability.

RESPONSE TO FIRE ALARM

Upon hearing a fire alarm sounded within the arena, the Referee shall stop play and determine the emergency response as dictated by the arena management. The Referee shall be aware that all players, team officials, on-ice and off-ice officials may be required to evacuate the building immediately, if dictated by the arena management. A full report should be made to the appropriate Regional Director and Officiating Coach.

HEARINGS

Referee(s) who are requested to attend a hearing should bring copies of all appropriate Game and/or Match Penalty Reports, or any other details required for the hearing. It is recommended that any time a report is filed that the Official making the report, also copy and keep the copy of the report before sending it. If required to attend a hearing, either in-person or via video, Officials must adhere to the off-ice dress code.

PLAYER SUSPENSIONS

These are handled by the Regional Directors, and any inquiries should be directed to them. **Do not tell any Team Official how long a Player may be suspended.** Due to unknown circumstances, or accumulated offences, the Player could receive a suspension greater than the minimum on the "Suspension List".

REMEMBER, SILENCE CANNOT BE MISQUOTED!

CHAMPIONSHIP OFFICIALS

Championships and prestige assignments are awarded every season to those Officials who have acquitted themselves to being the very best Officials, who can represent the OMHA with excellence. Participation is available from all parts of the OMHA and is not restricted. In order to be considered, Officials must indicate their interest in participating to their Officiating Coach.

Qualifications for each event can vary depending upon considerations set forth by the governing organization but as a minimum, the OMHA requirements set out in OMHA **Regulation 13.1c)** will apply. You will also need an updated performance evaluation.

Many events will have additional details that will be communicated with the chosen Officials in a timely manner prior to the event. Compliance with all of the requirements is necessary to ensure continued participation. At most of these events, advancement within the event is based upon performance evaluations performed during games. Exceptional performance will be rewarded.

Championships and prestige games can be very rewarding and cherished experiences. Many OMHA Officials have used this type of competition to hone the skills required for advancement up to and including professional hockey.

ADVANCEMENT OF OFFICIALS

Advancement is largely a self-directed function, in that Officials must shoulder the responsibility for their own future and personal growth. Officiating Coaches are established to facilitate this movement, help set goals, targets and to evaluate performance. The following points hold true for any level of advancement:

1. Officials must indicate their interest to advance to their Officiating Coach.
2. Officials capable & deserving of advancement will be recommended by the OMHA Officiating Coach to the Manager of Officials.
3. Recommendations will be based on both on-ice & off-ice performance, rules knowledge, abilities, and attitude towards the officiating program.
4. The cost of advancing levels will be borne by the Official.

The OMHA offers advancement through the following clinical environments:

- **Level II** - offered via annual recertification. Level I officials who reach 16 years of age will be upgraded to Level II. This will happen at registration.
- **Level III** – offered via Upgrade Clinic to officials who have been invited by their Officiating Coach or Instructor based upon individual performance.

Full upgrade at any level is dependent upon an Official receiving satisfactory evaluations (practical assessments) by an Officiating Coach or Officiating Manager.

An Official may be formally restricted to certain levels of hockey to continue the development required to fully reach their potential.

Certification at any level does not make an individual automatically eligible to move to the next level. There is a limited need and opportunity for higher level Officials, and as such, selections are thoroughly reviewed before invitations are issued.

Those wishing to pursue avenues of Officiating Coaching, Instruction, or Coordination are encouraged to express their interest to their Manager of Officiating.

APPENDICES

REPRESENTATIVE ASSIGNMENTS

This table is found as an appendix to the OMHA Regulation 13.1(b).

LOCAL/HOUSE LEAGUE ASSIGNMENTS

This table is found as an appendix to the OMHA Regulation 13.1(b).

OMHA SOCIAL MEDIA POLICY

Adopted in 2018, this is applicable to all members of the OMHA.



It can be found at:

HOCKEY CANADA INJURY REPORT

This form is used when an injury has been sustained by a participant.



It can be found at:

MEDICAL INFORMATION SHEET

This form should be filled out by Officials and kept in a sealed envelope in their equipment bag. Should medical treatment be required, this info may be given to emergency personnel if the Official is incapacitated.



It can be found at:

MATCH PENALTY REPORT

This form must be completed and dispatched within 24 hours of calling a Match Penalty. When the form is submitted it will automatically be sent to Dave Wedlake, Chair Referees Program and the appropriate OMHA Regional Director. You should also receive a copy of the report.

It can be found at:



MALTREATMENT REPORT

This form is to be completed and dispatched within 24 hours of calling a penalty under Hockey Canada Rule 11.4 – Discrimination. When the form is submitted it will automatically be sent to Dave Wedlake, Chair, Referees Program and the appropriate OMHA Regional Director. You should also receive a copy of the report.

It can be found at:



REPRESENTATIVE ASSIGNMENTS (APPENDIX B)As referenced in **Regulation 13.1b)**

	LEVEL					
	Level 1	Level 2	Registered 3	Certified 3	Registered 4	Certified 4
U8	N/A	N/A	N/A	N/A	N/A	N/A
U9		X	X	X	X	X
U11-R2		X	X	X	X	X
U11-R3		X	X	X	X	X
U11-L3		X	X	X	X	X
U13-R2		X	X	X	X	X
U13-R3		X	X	X	X	X
U13-L3		X	X	X	X	X
U15-R2		X	X	X	X	X
U15-R3			X	X	X	X
U15-L3		X	X	X	X	X
U15-R4		X-Note 1	X	X	X	X
U15-L4		X	X	X	X	X
U18-R2		X	X	X	X	X
U18-R3				X	X	X
U18-L3		X	X	X	X	X
U18-R4		X-Note 1	X-Note 1	X	X	X
U18-L4		X	X	X	X	X
U21-R2		X	X	X	X	X
U21-R3				X	X	X
U21-L3		X	X	X	X	X
U21-R4				X	X	X
U21-L4		X	X	X	X	X
International				Eligible	Eligible	Eligible
Intra-Branch				Eligible	Eligible	Eligible

R2: Referee in a two-official system.

R3: Referee in a three-official system.

R4: Referee in a four-official system.

L3: Linesman in a three-official system.

L4: Linesman in a four-official system.

Note 1: In the four (4) official system, the other referee must be certified Level 3 or higher.

LOCAL/MINOR DEVELOPMENT/HOUSE LEAGUE ASSIGNMENTS (APPENDIX C)As referenced in **Regulation 13.1b)**

	LEVEL					
	Level 1	Level 2	Registered 3	Certified 3	Registered 4	Certified 4
U8	X	X	X	X	X	X
U9	X	X	X	X	X	X
U11-R2	X	X	X	X	X	X
U11-R3		X	X	X	X	X
U11-L3	X	X	X	X	X	X
U13-R2	X	X	X	X	X	X
U13-R3		X	X	X	X	X
U13-L3	X	X	X	X	X	X
U15-R2		X	X	X	X	X
U15-R3		X	X	X	X	X
U15-L3		X	X	X	X	X
U18-R2		X	X	X	X	X
U18-R3		X	X	X	X	X
U18-L3		X	X	X	X	X
U21-R2		X	X	X	X	X
U21-R3		X	X	X	X	X
U21-L3		X	X	X	X	X
International	N/A	N/A	N/A	N/A	N/A	N/A
Intra-Branch	N/A	N/A	N/A	N/A	N/A	N/A

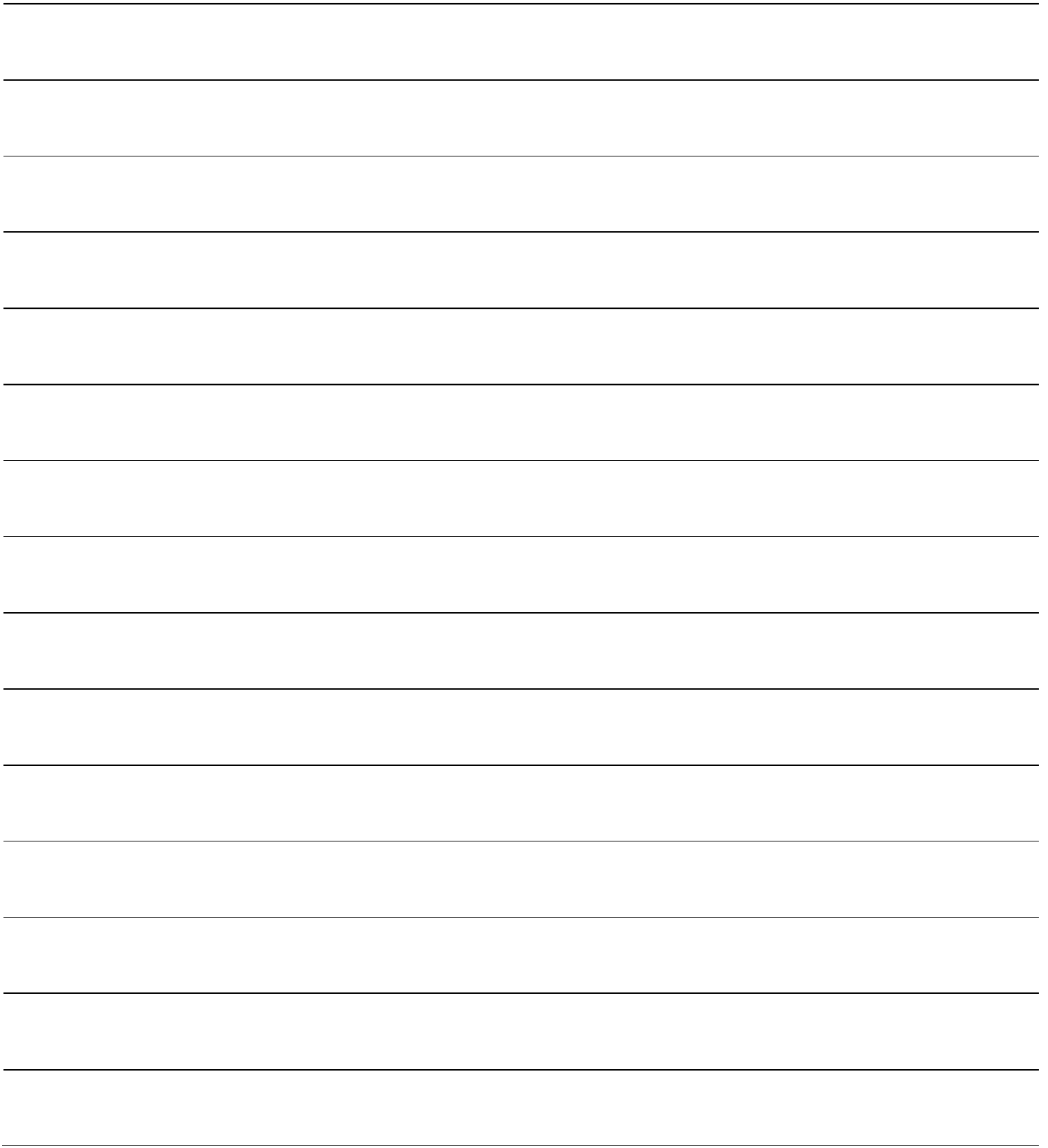
R2: Referee in a two-official system.

R3: Referee in a three-official system.

R4: Referee in a four-official system.

L3: Linesman in a three-official system.

L4: Linesman in a four-official system.







**THESE ARE KIDS
THIS IS A GAME
COACHES ARE VOLUNTEERS
REFEREES ARE HUMAN
THIS IS NOT THE STANLEY CUP FINAL**

**RESPECT THE GAME
AND HAVE FUN!**





OMHA.NET

