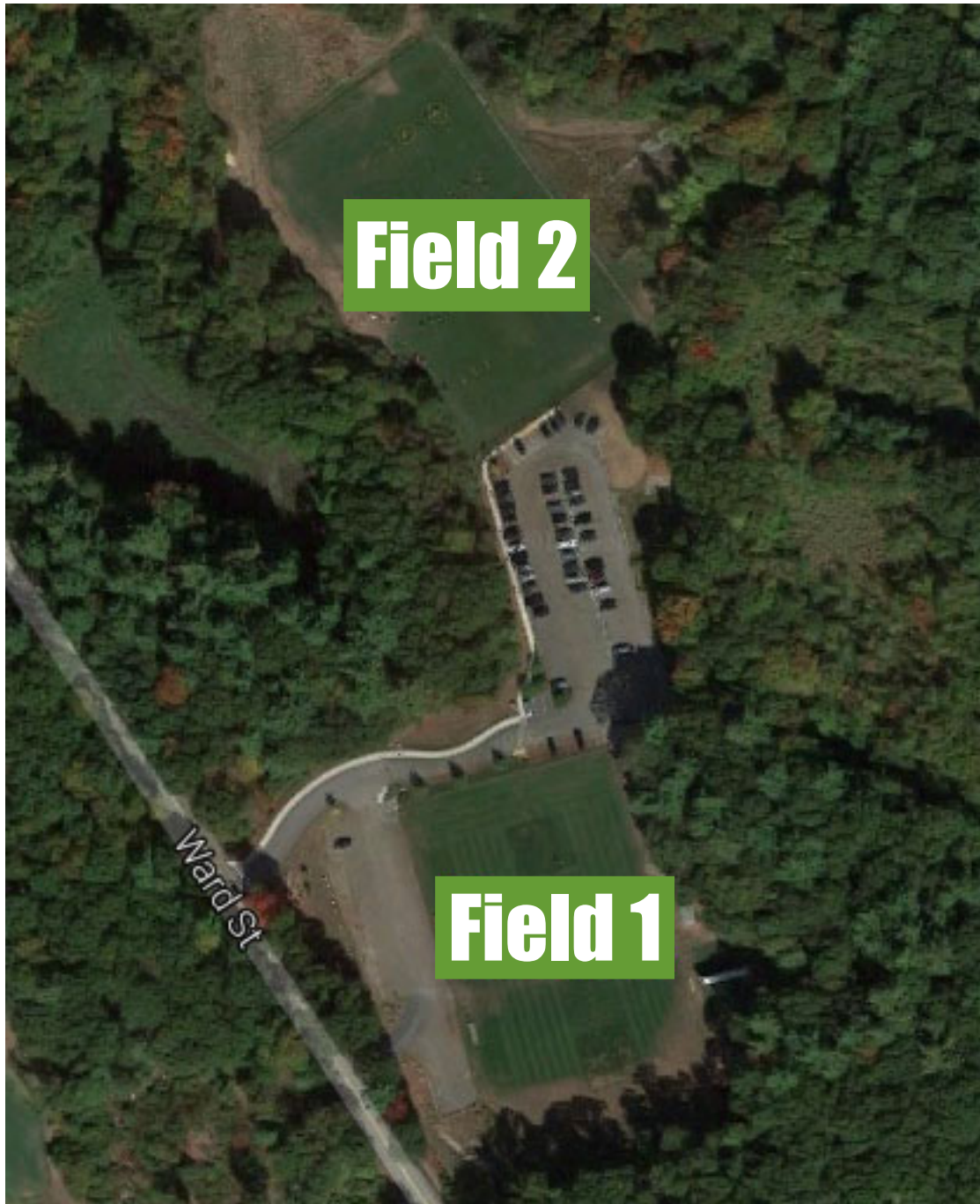


### **Hingham High School**

From Route 3:

- Route 228 North (Exit 14) to Hingham, Nantasket
- Go 5 Miles and bear right on Pleasant Street (right after white Christian Science Church and just before the white Congregational Church, both on your right.)
- Take right at first stop sign at Union Street. Hingham High School fields are on the right



### **Ward Street Field**

From Route 3:

- Take Derby Street Exit (Exit 15) off Route 3
- Head toward Hingham off ramp, past car dealership and Derby Street Shops on the right
- Left at first light at Cushing Street
- Go through another light, then 1 mile to T intersection; go left on to Ward Street
- Ward Street field is .5 miles on the right