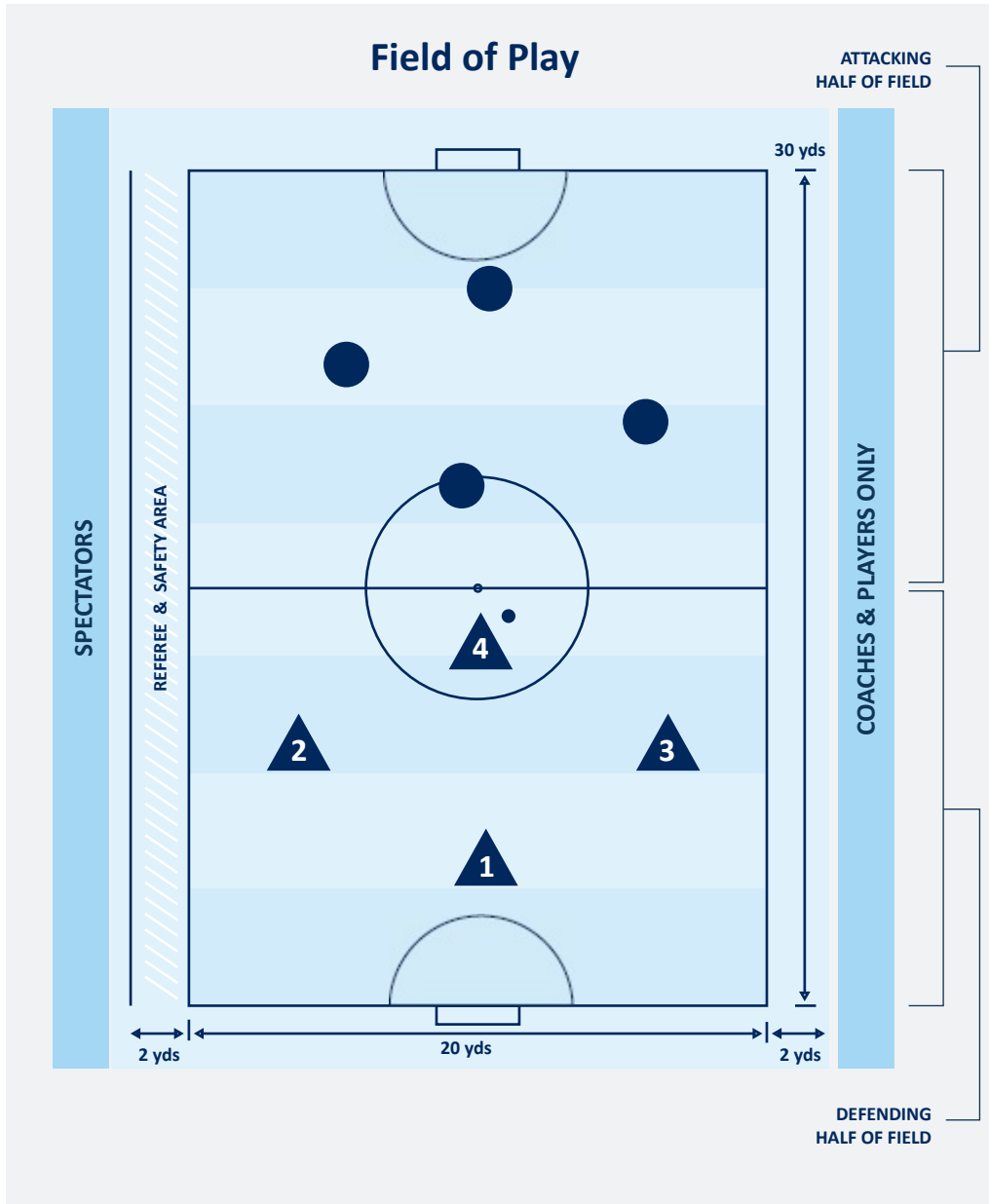


RULES OF PLAY

4v4 Playing Format



Rules of Play

FIFA rules apply with the exception of the rule changes below.

Offsides

The offsides rule is not called.

Attacking Half

Goals can only be scored from shots taken *inside* the attacking half.

If a goal is scored from a shot outside of the attacking half, then no goal is awarded.

Play is restarted with a free kick at the center line.

No Throw-in

There are no throw-ins.

Play is restarted with an instep (inside of the foot) kick from the ground.

Goal kicks

All players from the defending team must position themselves on their defensive half of the field.

Players can enter that attacking half of the field after the second touch (First touch is the kick in) or the ball crosses the half line. There are **no restrictions** to positioning of players from the attacking team.

Teams Trailing by 4 Goals

Teams trailing by a 4 goal margin can place an additional player on the field.

Coaches must make each other aware of this additional player.

The additional player may remain on the field until the score is level.

Goal Keepers

There are no Goal Keepers. Players should be encouraged to roam around the field and not stay positioned ~5 yards in front of the goal. Defenders touching the ball in the Goal Arc/Box results in a restart from the kick off. Attackers touching the ball in the Arc/Box results in a Goal Kick.

LEGEND

