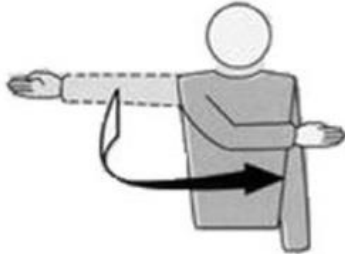


# Official Hand Signals

Information from 2013-15 Domestic Competition Regulations

## Indoor INDOOR HAND SIGNALS

Authorization to Serve 1



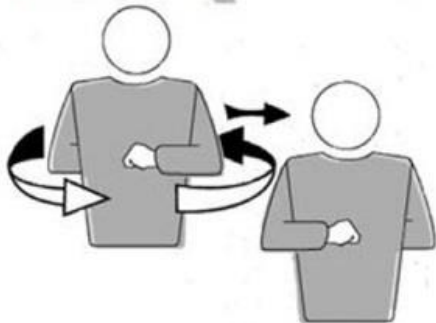
1. Move the hand to indicate the direction of service

Team to Serve 2



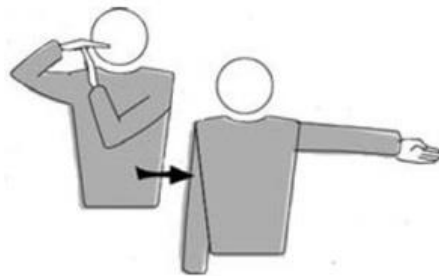
2. Extend the arm to the side of the team that will serve

Change of Courts 3



3. Raise the forearms front and back and twist them around the body

Time-Out 4



4. Place the palm of one hand over the fingers of the other, held vertically (forming a "T") and then indicate the requesting team

Substitution 5



5. Circular motion of the forearms around each other

Misconduct Warning 6a  
Misconduct Penalty 6b



6. Show a yellow card for warning. Show a red card for penalty

Expulsion

7



7. Show both cards jointly for expulsion

Disqualification

8



8. Show red and yellow cards separately for disqualification

End of Set  
or Match

9



9. Cross the forearms in front of the chest, hands open

Ball Not Tossed or Released  
at the Service Hit

10



10. Lift the extended arm, the palm of the hand facing upwards

Delay in Service

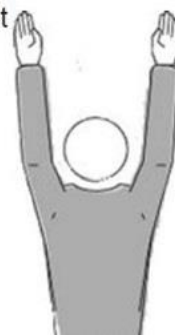
11



11. Raise eight fingers, spread open

Blocking Fault  
or Screening

12



12. Raise both arms vertically, palms forward