

OFFICIAL PROGRAM - TWENTY FIVE CENTS



HOME

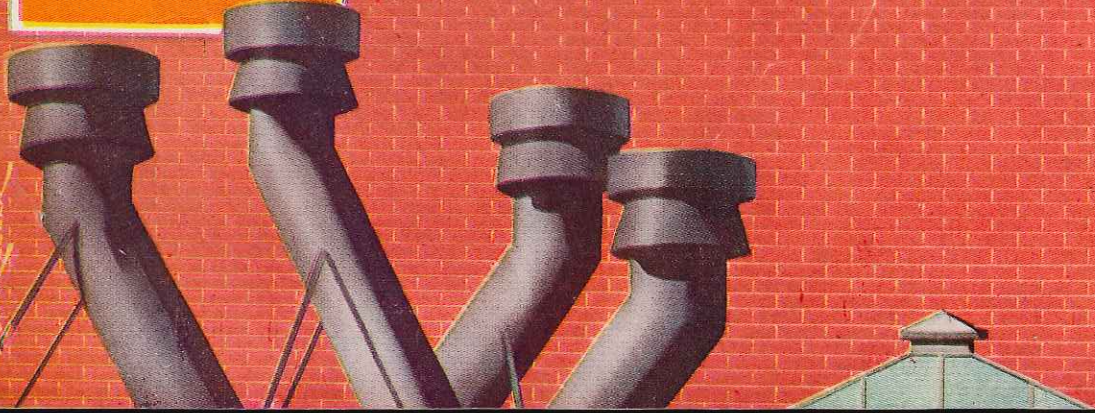
SEPT. 19 HUMBOLDT ST.
 OCT. 10.....CENT. WASH.
 NOV. 7WHITWORTH
 NOV. 14....PUGET SOUND

AWAY

SEPT. 26 ..PUGET SOUND
 OCT. 3WEST. WASH.
 OCT. 17.....EAST. WASH.
 OCT. 24.....PACIFIC U.
 OCT. 31.....U. B. C.

P L C
 VS
HUMBOLDT ST.
 SEPTEMBER 19, 1953 LINCOLN BOWL

Don Ferrer

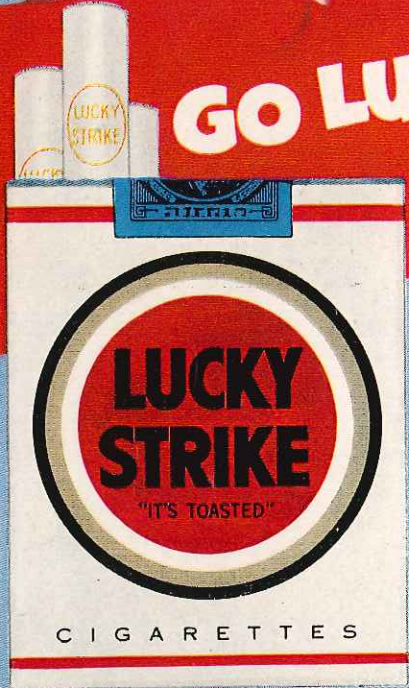


LUCKIES TASTE BETTER!

Cleaner, Fresher,
Smoother!

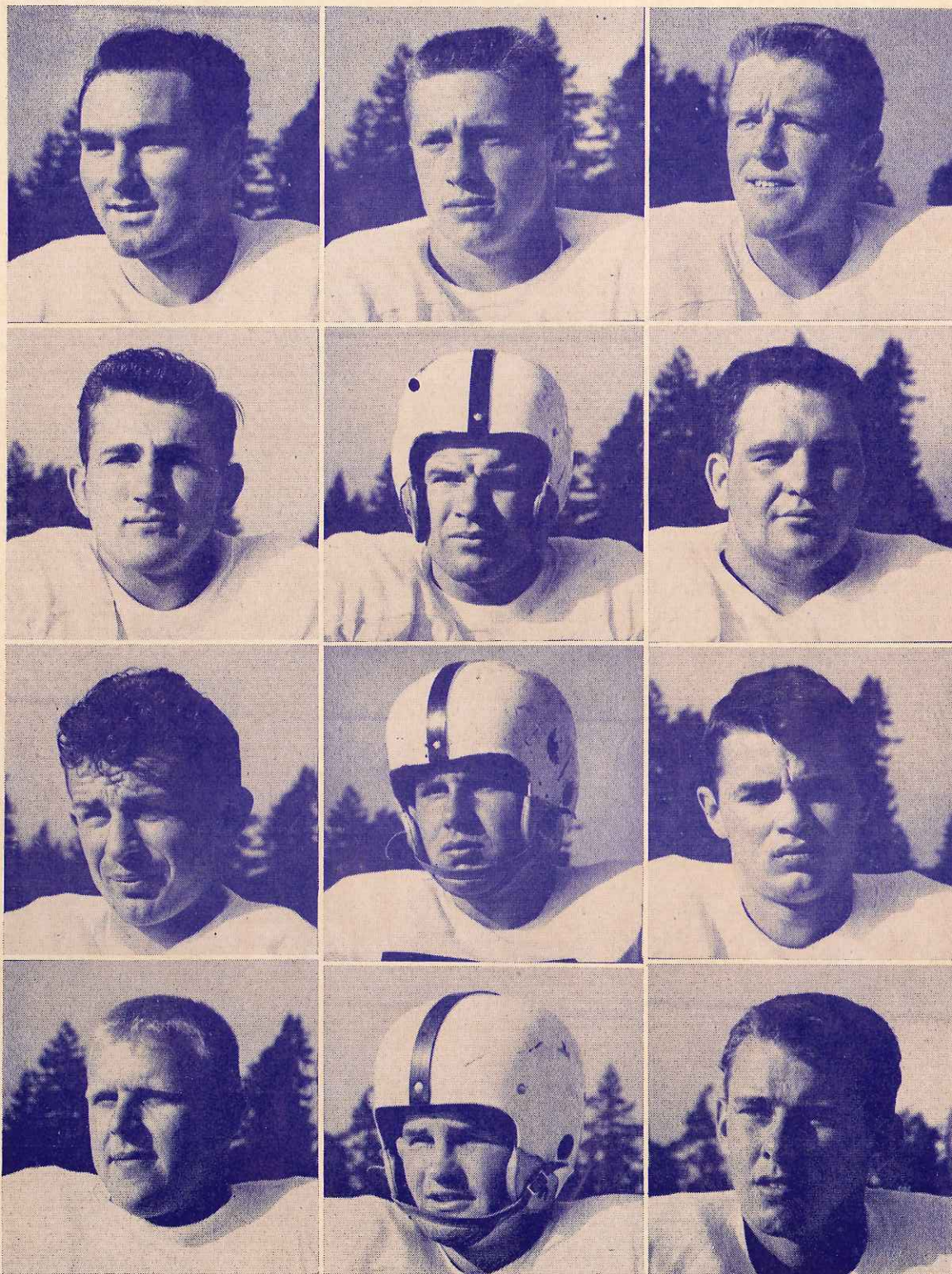
Be Happy

GO LUCKY!



COPR., THE AMERICAN TOBACCO COMPANY

GLADIATORS

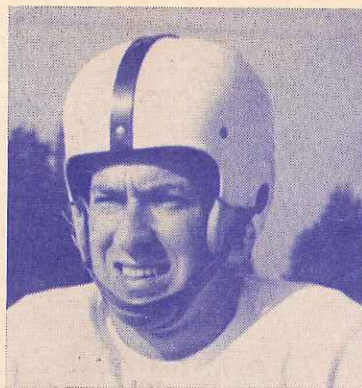


BRIAN PRICE
FRANK LANCASTER
FRANK KARWOSKI
BOB McPHERSON

GARY GALE
ROGER LARSON
DICK BROWN
JIM BRICKER

RON BILLINGS
BOB McADAMS
JERRY BENSON
BILL BORDEN

Lutes in Curtain Raiser



DOUG McGRATH



JIM BALL

Graduation cut a huge swath out of last year's championship aggregation. Coach Harshman has but ten lettermen back around which to build his team this year. There are some big holes to fill, especially at quarterback and at tackle. Another factor which will hurt the Lutes this fall is the fact that several of the lettermen returning are either offensive or defensive specialists, and they must be trained to go both ways now that two platoon football has been outlawed.

In the backfield the Lutes will have three men who have three years of varsity experience. These include Ron Billings, who was the choice as the defensive halfback on the Associated Press' Little All-American team last year. Billings was also used at times on offense as an end and he made some sensational catches. The other returnees are Frank Karwoski and Dick Larson, a pair of small, but very effective ball packers. Karwoski played quarterback his first two seasons, but last year shifted to left-half. However, this fall finds him back in the quarterback spot again. Harshman may also try Larson in the signal calling position.

The Gladiators will be pretty well fortified on the flanks with a pair of veteran performers returning in the persons of Jim Ball and Bob McAdams. Ball was one of the leading scorers for the Lutes last year and was an all-conference selection. Up from last year's JV squad is sophomore Phil Nordquist, a rangy lad from Lake Stevens, who also did well in basketball as a Frosh. The sole returnee at tackle is the biggest man on the Lute squad, namely 240

pound Bill Borden. Last season big Bill was a stand-out on both offense and defense. At the guard spots Roger Larson and Doug McGrath, a couple of experienced hands, are expected to give the Lutes plenty of power in the center of the line. The other returning letterman is Gary Gale at center, who was a standout on defense as a freshman last year. Gary is light as centers go, but he has a lot of scrap and may be able to last out the season in the dual role on offense and defense.

Among the new men who are expected to give the Lutes added strength in the backfield are a pair of transfers, husky Frank Lancaster from Washington State and hard-running Brian Price from Lower Columbia College in Longview. A pair of freshman backs are also making determined bids to crack the starting eleven. They may do so before the season is too far along. One of them is Jerry Benson, quarterback from the Burlington High School eleven which had an outstanding record in the state last fall. The other is Dale Homestead who was a standout ball player for the championship Clover Park High School team last season.

In the line there are several good prospects. At end, freshman Jack Ellingson from Clover Park High, a fast, rangy man, is expected to give the Lutes the reserve strength they will need in that department. Bob McPherson from Grays Harbor College and Don Cameron, freshman from Ballard High in Seattle are a pair of tackles who are battling for the starting berth opposite Borden. Another Clover Park star is helping out the cause in the guard position. He is Loney Roberts, a small but very scrappy, hard-driving lineman. At center to spell off Gale, Harshman has a good freshman in the person of Claire Egtvedt, who played on Ballard's championship eleven last year.

REGISTERED PHARMACIST ALWAYS ON DUTY

Parkland
PHARMACY

THE REXALL DRUG STORE
PACIFIC AVE. AT NEW BANK CORNER

GR. 8519

For Expert Shoe Repair . . .
. . . For Quality Dyeing
it's

ART'S SHOE SERVICE



"Hogan, you go in at right tackle, and you, Simpson, go along and explain the signals to Hogan!"



"Oh, Brother! This is going to be some penalty!"

LUTES' 1953 SCHEDULE

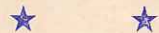
Sept. 19.....	Humboldt State at Tacoma
*Sept. 26.....	CPS at CPS Field
Oct. 3.....	Western at Bellingham
*Oct. 10.....	Central at Tacoma
Oct. 17.....	Eastern at Cheney
Oct. 24.....	Pacific Univ. at Forest Grove
Oct. 31.....	British Columbia at Vancouver
Nov. 7.....	Whitworth at Tacoma
Nov. 14.....	CPS at Tacoma

*To be played at 2 p.m.; all others 8 p.m.



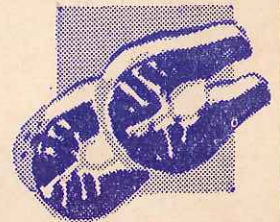
LUTES' 1952 RECORD

PLC 0.....	CPS	7
PLC 6.....	Humboldt State	7
PLC 7.....	Western	7
PLC 14.....	Whitworth	7
PLC 7.....	CPS	0
PLC 25.....	Pacific Univ.	33
PLC 45.....	Central Wash.	9
PLC 20.....	Eastern Wash	19
PLC 41.....	British Columbia	7



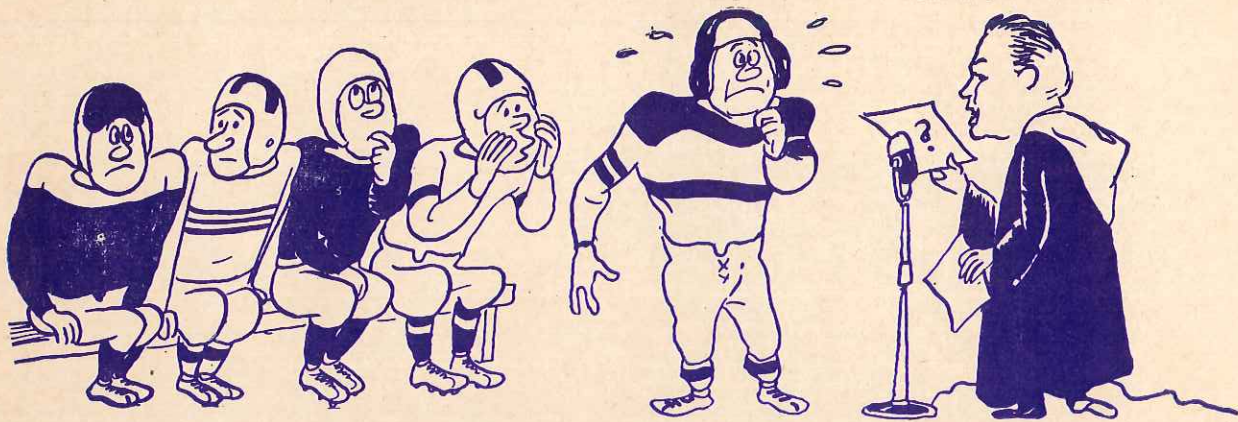
WE WOULD BE PLEASED TO
SERVE YOU . . . !

**FLETCHER'S
MARKET**



GRanite 8550

Free Delivery



A QUIZ FOR THE "QUIZZICAL"

FOR THE "QUIZZICAL" football fan, here's a quiz on matching questions compiled by America's famed bandleader, Horace Heidt. Incidentally,

Heidt, who played football and is a real fan, is heard every Sunday night over CBS on his highly rated and popular radio show.

I. Nickname the Coaches Right!

- | | |
|----------------|--------------------|
| 1. Hickman | a. "Old Fox" |
| 2. Bierman | b. "Grand Old Man" |
| 3. Dodd | c. "Iron Major" |
| 4. Warner | d. "Buff" |
| 5. Walker | e. "Tuss" |
| 6. Shaughnessy | f. "Little Giant" |
| 7. Stagg | g. "Old Dodge" |
| 8. McLaughry | h. "Silver Fox" |
| 9. Donelli | i. "Peahead" |
| 10. Cavanaugh | j. "Shag" |

II. Who Mascots Whom?

- | | | | |
|------------|------------|---------------|-----------------|
| 1. S.M.U. | a. Badger | 6. Columbia | f. Goat |
| 2. L.S.U. | b. Mule | 7. Pittsburgh | g. Bengal Tiger |
| 3. Yale | c. Gopher | 8. Wisconsin | h. Lion |
| 4. Navy | d. Mustang | 9. Army | i. Ram |
| 5. Fordham | e. Panther | 10. Minnesota | j. Bulldog |

III. What Schools Play on These Home Fields?

- | | |
|---------------------|------------------------|
| 1. Michie Stadium | a. Southern California |
| 2. Kenan Stadium | b. Texas A. & M. |
| 3. Coliseum | c. Pennsylvania |
| 4. Dyche Stadium | d. Wisconsin |
| 5. Palmer Stadium | e. North Carolina |
| 6. Baker Field | f. Georgia |
| 7. Franklin Field | g. Army |
| 8. Camp Randall | h. Princeton |
| 9. Kyle Field | i. Northwestern |
| 10. Sanford Stadium | j. Columbia |

IV. 1948 Conference Champs

- | | |
|--------------------|---------------------|
| 1. Ivy League | a. Utah |
| 2. Southeastern | b. California |
| 3. Southern | c. S.M.U. |
| 4. Big Ten | d. Texas Tech |
| 5. Big Seven | e. Georgia |
| 6. Missouri Valley | f. Cornell |
| 7. Southwest | g. Michigan |
| 8. Border | h. Clemson |
| 9. Rocky Mountain | i. Oklahoma |
| 10. Pacific Coast | j. Oklahoma A. & M. |

V. Who Contests for These Trophies?

- | | |
|------------------------|-------------------------------------|
| 1. Golden Bear | a. Duke-North Carolina |
| 2. Golden Egg | b. Tulane-L.S.U. |
| 3. Illibuck | c. Stanford-California |
| 4. Little Brown Jug | d. Illinois-Ohio State |
| 5. Little Brass Cannon | e. Temple-Bucknell |
| 6. Old Oaken Bucket | f. Michigan-Minnesota |
| 7. Old Shoe | g. Mississippi State-Mississippi U. |
| 8. "The Rag" | h. Washington U.-California U. |
| 9. Silver Goal Post | i. Purdue-Indiana |
| 10. The Axe | j. Rutgers-Lafayette-Lehigh |

VI. Give these All-American Players of the Last Ten Years their Right Positions.

- | | | | |
|-----------|--------------|--------|--------------|
| 1. End | a. Suffridge | 7. End | g. Aldrich |
| 2. Tackle | b. Blanchard | 8. QB | h. Savitsky |
| 3. Guard | c. Swiacki | 9. HB | i. Connor |
| 4. Center | d. Sinkwich | 10. HB | j. Kavanaugh |
| 5. Guard | e. Harmon | 11. FB | k. Blozis |
| 6. Tackle | f. Albert | | |

VII. What Schools Did These Famous Backfields Represent?

- | | |
|-----------------------------|--|
| 1. Harvard—1913 | a. McAfee, Lach, Davis, Prothro |
| 2. Notre Dame—1924 | b. Walker, Johnson, McKissack, Page |
| 3. Southern California—1931 | c. Mahan, Brickley, Bradlee, Logan |
| 4. Minnesota—1934 | d. Davis, Blanchard, Tucker, McWilliams |
| 5. Pittsburgh—1937 | e. Harmon, Evashevski, Kromer, Westfall |
| 6. Boston College—1940 | f. Stuhldreher, Crowley, Layden, Miller |
| 7. Army—1945 | g. Chickerneo, Goldberg, Stebbins, Cassiano, Patrick |
| 8. Duke—1940 | h. Shaver, Pinckert, Musick, Mohler |
| 9. Michigan—1939 | i. Toczylofski, O'Rourke, Maznicki, Holovak |
| 10. S.M.U.—1948 | j. Lund, Kostka, Alphonse, Seidel |

VIII. Give the School Its Right Song!

- | | |
|------------------------|--|
| 1. Cornell | a. "Hail! to the victors valiant—" |
| 2. Yale | b. "We'll back you to stand 'gainst the best in the land—" |
| 3. Columbia | c. "What though the odds be great or small—" |
| 4. Pennsylvania | d. "Fight, Fellows, Fight, Fight, Fight We'll win this game.—" |
| 5. Georgia Tech | e. "Who owns New York—" |
| 6. Michigan | f. "Fight on to victory, fight on—" |
| 7. Southern California | g. "Far above Cayuga's waters—" |
| 8. Notre Dame | h. "Hurrah for the Red and Blue—" |
| 9. Wisconsin | i. "Boola, boola—" |
| 10. Illinois | j. "I'm a rambling wreck—" |

for Sunday Night Treats . . .
 . . . for Home-baked Pies
 it's

Parker's

ON AIRPORT ROAD—3 MILES EAST OF BANK

Shoes for all the Family

Somes

SHOE STORES

IN PARKLAND
 and also at
 North 26th & Proctor

The RAND Shoe

For Men and Boys

WESTERN WEAR
 SPORTS WEAR
 WORK CLOTHES

MADDEN'S
 Men's and Little Men's Shop

Parkland Center Building
 Granite 4242

FOR COMPLETE FLORAL SERVICE . . . CALL

Stella's Flowers

Artistry in Flowers

Parkland Center Building We Wire Flowers
 Granite 7863 We Deliver

P. L. C. ROSTER

No.	Name	Pos.	Ht.	Wt.	Home Town
67	Larry Ash	T	6-2	195	Rochester, Wash.
77	Jim Ball	E	6-1	194	Puyallup, Wash.
32	Jerry Benson	B	5-10	175	Burlington, Wash.
68	Jerry Berg	C	5-10	175	Seattle
52	Ron Billings	E	5-10	170	Tacoma
76	Bill Borden	T	6-3	240	Seattle
59	Jim Bricker	B	5-8 1/2	164	Tacoma
79	Dick Brown	G	5-11	175	Parkland
40	Don Cameron	T	6-3	220	Seattle
C5	Jim Capelli	B	5-8	175	Kent
60	Claire Egtvedt	C	5-8	160	Seattle
81	Jack Ellingson	E	6-2	180	Tacoma
69	Mark Freed	G	5-11	180	Seattle
62	Gary Gale	C	5-10	180	Puyallup
57	Ron Hasley	B	5-7	160	Polson, Montana
58	Dale Homestead	B	5-10	155	Tacoma
41	Jim Jacobson	T	6-1	185	Bellingham
50	Frank Karwoski	Q	5-6	155	Tacoma
51	Frank Lancaster	B	6	193	Puyallup
59	Dick Larson	B	5-10	170	Tacoma
74	Roger Larson	G	5-9	195	Tacoma
66	Bob McAdams	B	5-10	175	Bremerton
56	Jim McCuaig	B	6-2	165	Coeur d'Alene, Ida.
70	Doug McGrath	G	5-10	182	Puyallup
75	Bob McPherson	T	6-	205	Elma, Wash.
55	Don Morris	B	6	196	Arlington, Wash.
	Fred Muenschner	B	5-7	165	Lynden, Wash.
72	Phil Nordquist	E	6-4	195	Lake Stevens, Wn.
53	Brian Price	B	6-1	185	Longview
27	Ray Reep	E	6-1	185	Mount Vernon
61	Lonnie Roberts	G	5-10	175	Tacoma
	Don Rose	B	5-10	175	Eatonville
	Bob Schackel	G	5-10	175	Tacoma
63	Larry Shoberg	E	5-11	170	Arcadia, Calif.

Head Coach: Marv Harshman

Assistants: Mark Salzman, Ray Barnes, Oliver Magnuson,
 Art Swanson

McCAY'S ICE CREAMERY
 Parkland

Open After the Game
 Milk Shakes — Floats — Sundaes

LISTEN TO PLC HOME GAMES ON KMO

Sponsored by . . .

Marv Tommervik's



Parkland Fuel Oil Service

120th and Pacific

Granite 8684





DELICIOUS



PACIFIC LUTHERAN LINE-UP

LE	LT	LG	C	RG	RT	RE
Ball	McPherson	R. Larson	Gale	McGrath	Borden	McAdams
77	75	74	62	70	76	66

QB
Karwoski
50

LH
D. Larson
55

RH
Lancaster
51

FB
Price
53

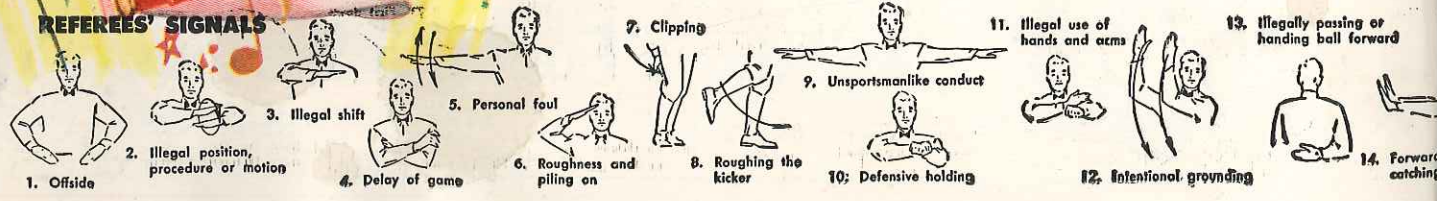
67 Larry Ash	69 Mark Freed	70 Doug McGrath
77 Jim Ball	62 Gary Gale	75 Bob McPherson
32 Jerry Benson	64 Al Gubrud	55 Dick Larson
68 Jerry Berg	57 Ron Hasley	Fred Muenscher
52 Ron Billings	58 Dale Homestead	72 Phil Nordquist
76 Bill Borden	41 Jim Jacobson	53 Brian Price
59 Jim Bricker	50 Frank Karwoski	27 Ray Reep
79 Dick Brown	51 Frank Lancaster	61 Lonnie Roberts
40 Don Cameron	Roger Larson	73 Don Rose
65 Jim Capelli	Doug Mandt	29 Bob Schackel
60 Claire Egtvedt	66 Bob McAdams	63 Larry Shoberg
81 Jack Ellingson	56 Jim McCuaig	

OFFICIALS

Umpire: George Wise
Head Linesman: Ed McCoy
Field Judge: Ed Stricherz

COCA COLA BOTTLING,

REFEREES' SIGNALS



1. Offside
2. Illegal position, procedure or motion
3. Illegal shift
4. Delay of game
5. Personal foul
6. Roughness and piling on
7. Clipping
8. Roughing the kicker
9. Unsportsmanlike conduct
10. Defensive holding
11. Illegal use of hands and arms
12. Intentional grounding
13. Illegally passing or handing ball forward
14. Forward catching

REFRESHING



HUMBOLDT STATE LINE-UP

LE	LT	LG	C	RG	RT	RE
Dunaway 24	Willits 44	Ingram 18	McAuley 37	Marks 40	Gustafson 45	Myers

QB
Mechals
25

LH
Diaz
12

RH
Girsback
19

FB
Darling
21

1 Davis, Lafayette	17 Wright, Red	33 Hanson, Bob
2 Tiller, Bob	18 Ingram, Jim	34 Amas, Larry
3 Kinser, Jack	19 Girsback, Bob	35 Petterson, Richard
4 Hendrickson, Alan	20 Pelleberg, Bob	36 Fulwider, William
5 Smith, Jerry	21 Darling, Keith	37 McAuley, Jim
6 Yamagata, Hank	22 Eggers, Bob	38 Sicard, Don
7 Crippen, Doug	23 Kraus, Howard	39 Austin, Jerry
8 Bigler, Lewis	24 Dunaway, Bob	40 Marks, Eugene
9 McGillivray, Jerry	25 Mechals, Ray	41 Kane, Henry
10 Crocker, George	26 Keadle, George	42 Yost, Fred
11 Harpham, Murl	27 Tarpley, John	43 McKamey, Gene
12 Diaz, Rudy	28 Lane, Richard	44 Willits, Wes
13 Psaros, George	29 Williams, Ed	45 Gustafson, A. R.
14 Knowles, Don	30 Bertholf, Bob	46 Ratzlaff, Don
15 Von Steeg, Walt	31 Hooper, Dick	47 Myers, Joe
16 Thomas, Dale	32 McBride, William	49 Herse, John



INC., TACOMA, WASH.

15. Ineligible receiver down field on pass



pen or kick interference

17. Incomplete forward pass, penalty declined, no play or no score



16. Ball illegally touched, kicked or batted



18. Crawling, helping the runner or interlocked interference



19. Ball dead; if hand is moved from side to side; touchback



20. Touchdown or field goal



21. Safety



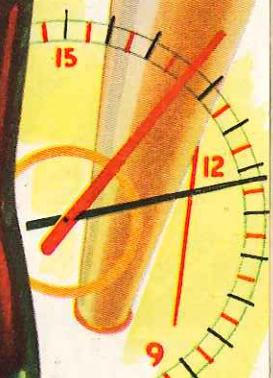
22. Time-out



24. Start the clock or no more time-outs allowed



25. Ball ready for play



PORTRAIT
COMMERCIAL

WEDDINGS
PARTIES
CHILDREN

McKewen

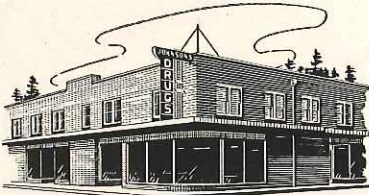
STUDIO

Phone GR. 3833
Eves. and Sun., GR. 5969

PARKLAND

Johnson's Drug

OPPOSITE PARKLAND POST OFFICE



★ FOUNTAIN

★ SCHOOL
SUPPLIES

Complete Lubrication — Tires and Batteries

THE BEST COSTS NO MORE at

**Lloyd Dillingham's
RICHFIELD SERVICE**

Pacific Ave. at Garfield St. GR. 3040 Parkland

**LOOK FOR THIS SIGN OF QUALITY
LUMBER**

Lumber by



Shop Tacoma's Largest
Retail Lumber Yard

WEEK DAYS:
8 a.m. to 5 p.m.

SATURDAYS
8 a.m. till Noon

**ST. PAUL & TACOMA
LUMBER CO.**

MA 6181

Over 11th St. Bridge 2 Blocks

Free Parking — Free Delivery

HUMBOLDT STATE ROSTER

No.	Name	Pos.	Ht.	Wt.	Home Town
1	L. Davis	H	5-6	150	Hoopa, Calif.
2	Bob Tiller	E	5-11	155	Ferndale
3	Jack Kinser	Q	6-	130	Eureka
4	Alan Hendrickson	Q	5-8	135	Arcata
5	Jerry Smith	Q	5-10	156	Eureka
6	Hank Yamagata	H	5-8	145	Alturas
7	Doug Crippen	H	6	165	Medford, Oregon
8	Lewis Bigler	H	5-11	185	Crescent City
9	J. McGillivray	H	5-1	155	Eureka
10	George Crocker	F	5-8	170	Portland, Oregon
11	Murl Harpham	E	6-	170	Snohomish, Wash.
12	Rudy Diaz	H	5-7	150	Toppenish, Wash.
13	George Psaros	F	5-1	165	Stevenson, Wash.
14	Don Knowles	Q	5-11	170	Waterville, Wash.
15	Walt Von Steeg	G	5-7	160	San Francisco
16	David Wright	H	5-11	175	Toppenish, Wash.
17	Red Wright	E	5-11	175	Fallbrook, Calif.
18	Jim Ingram	G	6	175	Holtville
19	Bob Girsback	F	5-10	185	Eureka
20	Bob Pelleberg	E	6-3	180	Spokane, Wash.
21	Keith Darling	F	5-11	175	Spokane, Wash.
22	Bob Eggers	E	6-1	188	Chewelah, Wash.
23	Howard Kraus	E	6-2	195	San Francisco
24	Bob Dunaway	E	6-1	180	Fortuna
25	Ray Mechals	Q	6-2	188	Eureka
26	George Keadle	G	6-2	195	Lakeview, Oregon
27	John Tarpley	C	5-10	165	Long Beach
28	Richard Lane	G	6	185	Long Beach
29	Ed Williams	G	6-1	190	Lewiston, Idaho
30	Bob Bertholf	C	5-10	190	Taft
31	Dick Fisher	F	5-11	185	Ukiah
32	William McBride	H	5-11	165	Fortuna
33	Bob Hanson	T	6-1	180	Alturas
34	Larry Amos	E	5-10	165	Tieton, Wash.
35	R. Petterson	T	6-2	195	Spokane, Wash.
36	W. Fulwider	E	6-3	200	Maricopa
37	Jim McAuley	C	6	185	San Francisco
38	Don Sicard	T	6-1	225	San Bruno
39	Jerry Austin	T	6-2	210	Arcata
40	Eugene Marks	G	5-11	190	Ferndale
41	Henry Kane	H	6-1	200	Hoopa, Calif.
42	Fred Yost	T	6-2	215	Eureka
43	Gene McKamey	C	6-2	220	Sonoma
44	Wes Wilfitts	F	6-2	225	Eureka
45	Bill Gustafson	H	6-2	200	Eureka
46	Don Fitzlaff	H	6-2	200	Bakerfield
47	John Myres	H	6-2	190	Micanoga
48	John Herse	H	6-2	170	Glendale, Calif.
49	Howard	H	6-2	170	Glendale, Calif.
50	Mark	H	6-2	170	Glendale, Calif.
51	Bob	H	6-2	170	Glendale, Calif.
52	McGillivray	H	6-2	170	Glendale, Calif.
53	George	H	6-2	170	Glendale, Calif.
54	Harpham	H	6-2	170	Glendale, Calif.
55	Diaz	H	6-2	170	Glendale, Calif.
56	Psaros	H	6-2	170	Glendale, Calif.
57	Knowles	H	6-2	170	Glendale, Calif.
58	Von Steeg	H	6-2	170	Glendale, Calif.
59	McBride	H	6-2	170	Glendale, Calif.
60	Bigler	H	6-2	170	Glendale, Calif.
61	Gillivray	H	6-2	170	Glendale, Calif.
62	Crocker	H	6-2	170	Glendale, Calif.
63	Harpham	H	6-2	170	Glendale, Calif.
64	Diaz	H	6-2	170	Glendale, Calif.
65	Psaros	H	6-2	170	Glendale, Calif.
66	Knowles	H	6-2	170	Glendale, Calif.
67	Von Steeg	H	6-2	170	Glendale, Calif.
68	McBride	H	6-2	170	Glendale, Calif.
69	Bigler	H	6-2	170	Glendale, Calif.
70	Gillivray	H	6-2	170	Glendale, Calif.
71	Crocker	H	6-2	170	Glendale, Calif.
72	Harpham	H	6-2	170	Glendale, Calif.
73	Diaz	H	6-2	170	Glendale, Calif.
74	Psaros	H	6-2	170	Glendale, Calif.
75	Knowles	H	6-2	170	Glendale, Calif.
76	Von Steeg	H	6-2	170	Glendale, Calif.
77	McBride	H	6-2	170	Glendale, Calif.
78	Bigler	H	6-2	170	Glendale, Calif.
79	Gillivray	H	6-2	170	Glendale, Calif.
80	Crocker	H	6-2	170	Glendale, Calif.
81	Harpham	H	6-2	170	Glendale, Calif.
82	Diaz	H	6-2	170	Glendale, Calif.
83	Psaros	H	6-2	170	Glendale, Calif.
84	Knowles	H	6-2	170	Glendale, Calif.
85	Von Steeg	H	6-2	170	Glendale, Calif.
86	McBride	H	6-2	170	Glendale, Calif.
87	Bigler	H	6-2	170	Glendale, Calif.
88	Gillivray	H	6-2	170	Glendale, Calif.
89	Crocker	H	6-2	170	Glendale, Calif.
90	Harpham	H	6-2	170	Glendale, Calif.
91	Diaz	H	6-2	170	Glendale, Calif.
92	Psaros	H	6-2	170	Glendale, Calif.
93	Knowles	H	6-2	170	Glendale, Calif.
94	Von Steeg	H	6-2	170	Glendale, Calif.
95	McBride	H	6-2	170	Glendale, Calif.
96	Bigler	H	6-2	170	Glendale, Calif.
97	Gillivray	H	6-2	170	Glendale, Calif.
98	Crocker	H	6-2	170	Glendale, Calif.
99	Harpham	H	6-2	170	Glendale, Calif.
100	Diaz	H	6-2	170	Glendale, Calif.

My Wish for the Gladiators

DRIVING FORGET
STAMINA
SPORTSMANSHIP
and through these, SUCCESS
TRAV DRYER

PLC HOME GAMES BROADCAST

BY KMP (1360 on Your Dial)

with Bob Robertson

Through Courtesy of
MARV TOMMERVICK'S
PARKLAND FUEL OIL SERVICE

1953 Rule Changes

An exception will be made in the rule "that the old must give way to the new," this season as the "old" system of "Iron Man" football is revived in favor of the two-platoon system, which has been in effect for several years.

With the big change being made, the big controversy over which is the better system will be re-kindled. This season will no doubt decide whether the Platoon system was a flash in the pan or not. If the Iron Man style of play is kept again next year, chances are that it will be here to stay, if not, of course, the Two Platoon will be "it."

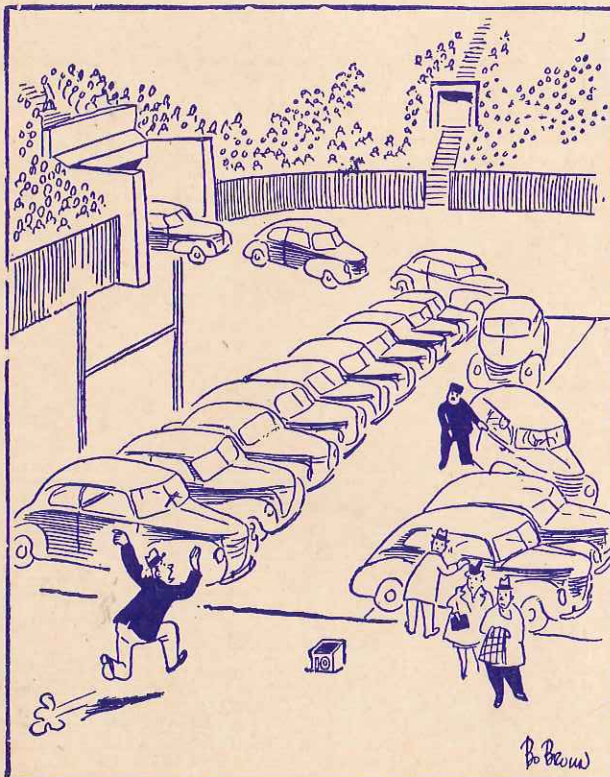
From the standpoint of the fan, the unlimited substitution rule was a headache, trying to keep tab on the frequent and mass changes in players. On the other hand, from the players' viewpoint, it gave more gridsters a chance to play.

The substitution rule for 1953, as adopted by the Rules Committee of the NCAA, will be:

"Any player withdrawn from the game may not go back in the same quarter, except during the final four minutes of the second and fourth quarters. Coaches will be held responsible for the legality of these substitutions."



"The coach gave him a twenty minute furlough!"



No! No! You park them outside!"

Answers to: A Quiz for the "Quizzical"

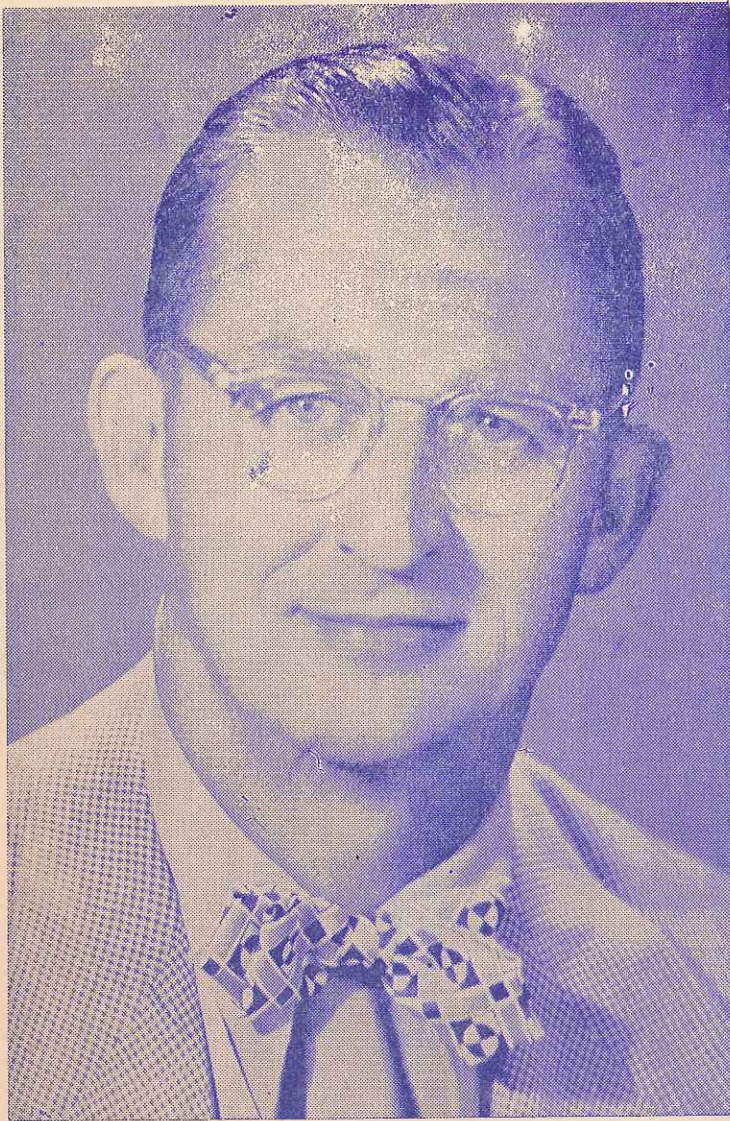
(Quiz will be found on page 2)

- I.—1-f 2-h 3-g 4-a 5-i 6-j 7-b 8-e 9-d 10-c
- II.—1-d 2-g 3-j 4-f 5-i 6-h 7-e 8-a 9-b 10-c
- III.—1-g 2-e 3-a 4-i 5-h 6-j 7-c 8-d 9-b 10-f
- IV.—1-f 2-e 3-h 4-g 5-i 6-j 7-c 8-d 9-a 10-b
- V.—1-h 2-g 3-d 4-f 5-j 6-i 7-e 8-b 9-a 10-c
- VI.—1-c or 6 2-i or k 3-a or h 4-g 5-a or h
6-i or k 7-c or j 8-f 9-d or e 10-d or e 11-b
- VII.—1-c 2-f 3-h 4-j 5-g 6-i 7-d 8-a 9-e 10-b
- VIII.—1-g 2-i 3-e 4-h 5-j 6-a 7-f 8-c 9-d 10-b

Go Get 'Em, Lutes!

DANIELS HARDWARE

On the Mountain Highway at Garfield Street



PHIL SARBOE

Tacoma Product Returns . . .

Tacomans at tonight's tilt between the invading Lumberjacks from Arcata, Calif., and the Gladiators, will welcome back one of its better-known athletic proteges, namely Phil Sarboe.

A letter-winner in football, basketball and baseball, at Lincoln High a quarter of a century ago, Phil is now head coach for the Humboldt State eleven, and athletic director for the Northern California school.

Sarboe is no stranger to the Evergreen Conference either. He coached the Central Washington Wildcats to a league title. Tacomans know him not only for his high school play, but for his record as head mentor at his Alma Mater. In 1944, the Abes won the city, Cross-State and mythical state championships.

Others know him as the ex-coach of the Washington State Cougars. He held that post from 1944 to 1949. From there he went to the Spokane school system, and thence to Humboldt. Last year his club won the Far Western Conference title, his first season there.

As a ball player, Sarboe achieved greatness by his outstanding quarterbacking for the Washington State College Cougars and in pro football. In the money game he played for the Boston Redskins, Chicago Cardinals, and the Brooklyn Dodgers.

S. GRIMSTEAD
JEWELER

• Diamond Counselor •
937 Broadway Tacoma

RAYMOND ELECTRIC CO.

BEAT THOSE LUMBERJACKS!

19th & Pacific

BR. 1712

**WE'RE WITH YOU, TEAM . . SO
FIGHT!**

GARFIELD VARIETY

½ BLOCK FROM P.L.C.

GR. 9948

LUMBERJACK 1953 SLATE

Humboldt State 0	Hamilton Field 6
Sept. 19	PLC at Tacoma
Sept. 26	Oregon Tech at Arcata
Oct. 3	Calif. Aggies at Arcata
Oct. 10	Southern Oregon
Oct. 17	Oregon Frosh at Arcata
Oct. 24	Ore. College of Ed. at Arcata
Oct. 31	Chico State



HUMBOLDT STATE 1952 RECORD

Humboldt State 6	Oregon Tech 7
Humboldt State 7	PLC 6
Humboldt State 41	Chico State 6
Humboldt State 50	Southern Oregon 0
Humboldt State 21	Oregon Frosh 6
Humboldt State 28	Calif. Aggies 21
Humboldt State 72	Calif. Poly 0
Humboldt State 41	Pepperdine 6



FOR SAFETY AND NO FUMBLING, PASS THE BALL TO . . .

CLARENCE E. LANGLOW CO.

818 Rust Building — BR. 3642
Tacoma 2, Wash.

AND SCORE POINTS FOR SERVICE ON AUTO,
FIRE AND CASUALTY INSURANCE



BEAUTIFUL
Dry Cleaning

Call

Puyallup 5-6651

Jacks, Glads In Return Bill

On the basis of Humboldt's opener, Marv Harshman's eleven will have a worthy opponent tonight. Last week the Lumberjacks held the highly touted Hamilton Air Force Base squad to a lone touchdown, losing 6-0.

The Arcata outfit has 16 lettermen returning from last year's Far Western Conference champions and have one game under their belts, which is always an advantage.

This is the second contest in a two-game home and home series between the Lutes and the Jacks. Last year the Parklanders journeyed to Arcata, where they lost a toughie, 7-6, to the home club.



Morning FRESH BREAD

- For Better Sandwiches
- For Tastier Toast
- For More Mealtime Enjoyment



PIPER
FUNERAL HOME
Phone Hawthorn 3353
5436 So. Puget Sound Ave.



P. L. C. Pilots

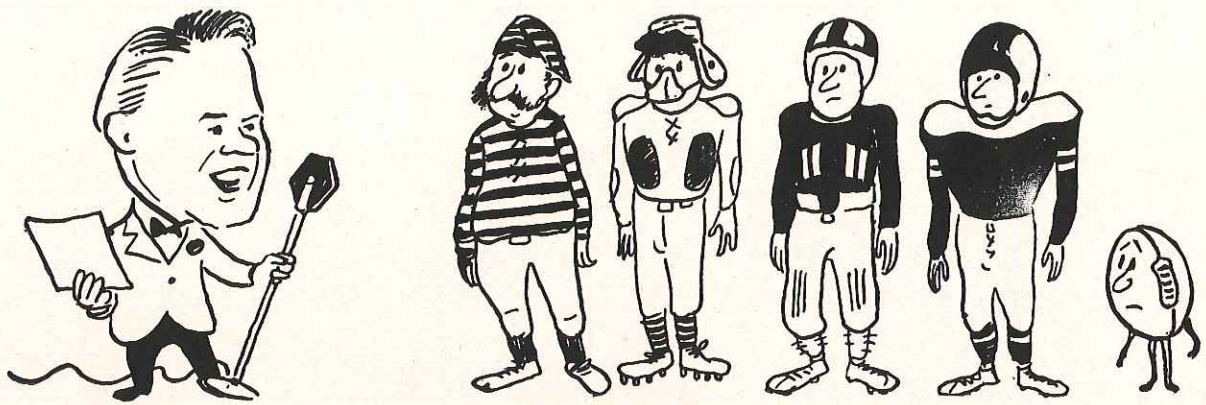
"Beat Humboldt" is the Lutes' war cry tonight, and if they down the Lumberjacks, a large share of the credit for the victory will be due to head coach Marv Harshman and his assistants.

Able guiding the Gladiators, under Harshman, are assistant coach Mark Salzman and three student aides, Ray Barnes, Ole Magnuson and Art Swanson. The latter trio were all members of the 1952 Ever-

green championship squad.

Salzman, now in his third year at PLC, also assists Harsh in basketball, and is the chief track mentor.

If their college football records are any criterion, the three student assistants should do a good job in their present roles. All three won berths on the All-Conference team last year, Barnes as a guard, Magnuson as a tackle and Swanson a halfback. Art and Ray hail from Puyallup while Ole claims Lincoln of Tacoma as his alma mater.



ARE YOU "UP" ON FOOTBALL HISTORY?

THROUGH the nationwide tours of his popular CBS Sunday night radio program, orchestra leader Horace Heidt has made the personal acquaintance of many of America's leading football coaches and players. Horace, who has discovered some of America's finest young talent, now wants to discover the answers to the following:

1. The Coach who had the largest number of winning Rose Bowl teams was (a) Knute Rockne (b) Howard Jones (c) Jock Sutherland.
2. The first Army-Navy game was played in (a) 1890 (b) 1900 (c) 1910.
3. The goal posts were set ten yards back of the goal line in (a) 1912 (b) 1919 (c) 1927.
4. The first time players were numbered was in (a) 1906 (b) 1913 (c) 1920.
5. The president who requested that Army and Navy resume football relations after their break was (a) Calvin Coolidge (b) Herbert Hoover (c) Franklin D. Roosevelt.
6. The total box score in the annual Rose Bowl Classic shows (a) Western teams on top (b) Eastern teams ahead (c) the count even between the two groups.
7. In the last ten years the forward pass has averaged (a) 12 to 20 yards per game (b) 20 to 28 yards (c) over 28 yards.
8. Today the rule book states that the score of a forfeited game is (a) 7-0 (b) 6-0 (c) 1-0.
9. The first football book ever published in the United States came out in (a) 1891 (b) 1899 (c) 1904.
10. The first football game broadcast took place in (a) 1919 (b) 1922 (c) 1925.
11. The use of the shift was first put into effect in (a) 1909 (b) 1913 (c) 1919.
12. Today the leather used in the football is (a) cowhide (b) pigskin (c) horsehide.
13. Signals were first called in (a) 1882 (b) 1897 (c) 1912.
14. It was not legal to throw a forward pass until the year (a) 1902 (b) 1906 (c) 1910.
15. Remember the stars of yesteryear?
 - A. The Notre Dame star whose last minute interception and scoring dash beat Army in 1929. Score 7-0.
 - B. The Columbia halfback who scored the touchdown on the famous KF79 play which beat Stanford in the 1934 Rose Bowl upset, 7-0.
 - C. The man who scored a last minute field goal for Georgia Tech against Navy in 1944, when the Southerners won 17-15.
 - D. The unsung end who snared a last minute pass to win the 1939 Rose Bowl Game for Southern California over Duke, 7-3.
 - E. The Michigan back who scored in the last 40 seconds for the Wolverines' 21-14 win over Ohio State in 1939.

SASH -- DOORS -- FRAMES
INTERIOR FINISH
CABINET WORK

Johnsons' Millwork Inc

2319 South Tacoma Way

Phone HI. 8443

CENTRAL MARKET

Wholesale and Retail Meats

BUY WITH CONFIDENCE

BR. 8431

1122 Market St.

WASHINGTON HARDWARE

"SPORTS SHOP"

Everything . . .
for every sport!



GOOD LUCK . . . from



MEMBER FEDERAL DEPOSIT INSURANCE CORPORATION
PARKLAND BRANCH

OIL SALES and SERVICE

STOVE AND DIESEL OIL

For Prompt Deliveries of MOBILHEAT

Call MAin 6137



764 Commerce

Tacoma



The West's Leading Boiler Manufacturer

STEAM AND HOT WATER HEATING BOILERS
S.B.I.-RATED—A.S.M.E. CODE CONSTRUCTION
SCOTCH TYPE HI-PRESSURE BOILERS
STACKS—BREECHINGS—STRUCTURAL
WATER TANKS AND HEATERS

BIRCHFIELD BOILER, INC.

TACOMA, WASHINGTON

2503 E. 11th

BRoadway 4155