

OFFICIAL MAGAZINE PROGRAM

**PACIFIC
LUTHERAN
COLLEGE**

VS.

**GONZAGA
UNIVERSITY**

25¢

Friday Evening, September 26, 1941
TACOMA STADIUM



AFTER THE GAME

BOWL

At Tacoma's Finest Alleys

- The newest . . . Most Modernly Equipped Alleys in the Northwest!
- Brunswick's Top Equipment!
- Tel-E-Score! ● Opera Chairs!

Art Dale, Owner and Manager

NORTH END ALLEYS

3806 North 26th

Phone PR. 9090

JUST
ONE WAY
TO
PLAY BALL



Whatever your goal, you have to have teamwork! Just as the football team must anticipate actions of the opposition, so City Light engineers must comprehend future problems. The team tries to play a better game City Light, to give better service.

TACOMA CITY LIGHT

GOOD LUCK TO P. L. C.

from

O. J. SWANES

NORTHERN FISH PRODUCTS CO.

1181 Dock Street

BRoadway 2381

CHAPPELL & GRIMES

World's Finest Imported Domestic
Tobaccos

At Prices You Would Pay for Cheaper Brands

Finest Imported Pipes

\$1 to \$10

946 PACIFIC AVENUE

TACOMA, WASH.



Official Magazine Football Program

Pacific Lutheran College

PARKLAND, WASHINGTON

vs.

Gonzaga University

SPOKANE, WASHINGTON

Friday, Sept. 26, 1941

TACOMA STADIUM

8:00 P. M.

PACIFIC LUTHERAN'S 1941 SCHEDULE

- Fri. Night, Sept. 26—Gonzaga University at TACOMA.
- Fri. Night, Oct. 3—Eastern Washington at TACOMA.*
- Sat. Night, Oct. 11—St. Martin's College at TACOMA.*
- Sat. Night, Oct. 18—College of Puget Sound at TACOMA.
- Sat. Night, Oct. 25—Western Washington at Bellingham.*
- Fri. Night, Nov. 7—Central Washington at Yakima.*
- Fri. Night, Nov. 14—Linfield College at TACOMA.
(Homecoming Game)
- Fri. Night, Nov. 21—Portland University at TACOMA.

*Washington Intercollegiate Conference games.



SIXTH AVENUE BOWLING CENTER

2805 Sixth Avenue

MAin 5272

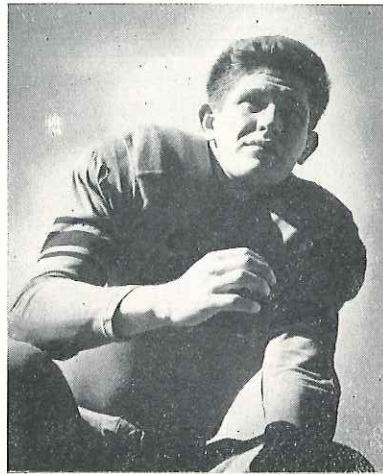
Bowl for Health

Bowl for Exercise

Bowl for Fun

GEO. F. COLEMAN, *Manager*

Pacific Lutheran Gladiators . . .



Marvel Harshman, 197-pound fullback and captain, has been called one of the half dozen best backs in the country. He can execute every phase of football play and do it well. Harshman is a born leader and his direction of the Lutheran team is one of the principle reasons for the successes of the past two years.

Big Harsh is the do-everything-well type of athlete. He stars equally in football, basketball, baseball and track. A girl once beat him at tennis, but we'll skip that.

M. HARSHMAN, F. B.



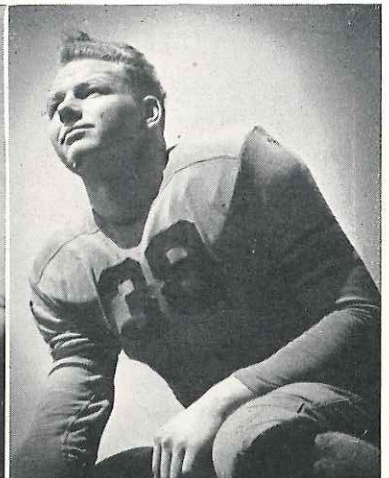
TOM LUMSDEN, R.H.

Tom Lumsden, 177-pound sophomore quarterback, is another one of last year's freshmen who are filling the graduation gaps in the 1941 Pacific Lutheran team. He's a triple-threater.



PETE PETERSON, L.G.

Pete Peterson, quick-starting running guard from Anacortes, is a 195-pound sophomore who promises to become one of the best linemen in the Winko league. Pete is filling the big brogans of George Broz this year.



HUGO SWANSON, R.T.

Hugo Swanson, 211 pounds of manly muscle, comes from Kapowsin. He's a sophomore and the rough-tough kind of tackle all coaches would give a leg to possess.

NEXT FRIDAY'S GAME

Pacific Lutheran and Eastern Washington College will open the third football season of the expanded Washington Intercollegiate Conference in Tacoma Stadium next Friday night, Oct. 3, at 8 o'clock.

The Lutes and Savages tied for the Winko championship in 1939, after the Lutherans had beaten Eastern, 18 to 14, in a sensational rally at Lincoln bowl.

Last year, fighting with similar ferocity on Cheney's turf, the Lutherans nosed out the Savages, 20 to 14, and won the Winko title. Coach W. B. "Red" Reese of the Savages is one of the most successful minor college coaches in the country and his team can be expected to give the Lutes another great battle here next week.

Pacific Lutheran Athletic Staff



HEAD COACH: Clifford O. Olson

Clifford Orrin "Cliff" Olson, 36, is now in his 13th season as head coach of Pacific Lutheran College. The first 12 years probably were the hardest for the quiet Norwegian field general, but never before has he faced as strenuous a schedule as this 13th autumn, opening with powerful Gonzaga and closing with Portland University.

In 13 years, by sweat and tears and some blood, Olson has raised Pacific Lutheran athletics from the status of a tackling dummy for Tacoma high schools to that of equality with the Pacific Northwest's best known minor college teams. His present squad has won 15 out of 16 football games the past two years, rating with Stanford as the Far West's only undefeated and untied teams in 1940, but this winning streak is only typical. Through 1935-36, Olson's Gladiators went 20 games without a defeat.

Widely known as the little school without a

practice field, without goal posts or any other football facilities, Pacific Lutheran this year is developing a modern athletic field which in future years will be a memorial to the teams Olson produced out among the boulders on "Parkland Pebbles."

Cliff Olson was a 140-pound fullback at Glenwood, Minn., high school. He went up to about 170 as fullback through four seasons with Luther College at Decorah, Iowa, and in his senior year kicked 15 successive conversions. Olson coached Marshall, Minn., high through a successful season in 1927, and in 1928 coached Spokane College (now closed) through four wins out of seven games. The school had 60 students and 15 boys turned out for football. Olson came to Pacific Lutheran in 1929 and that fall lost to Stadium, 33-0, and to Al Hopkins' Lincoln champions, 19-0. He still looks back on the Lincoln game as a moral victory, because the Lutherans made 12 first downs to Lincoln's 10.

Washington Hardware Co.

Hardware Specialists

ALL SORTS OF SPORTS EQUIPMENT

Featuring
"SPALDING"

BRoadway 1136 924 Pacific Ave.
TACOMA, WASHINGTON

Sports Fans, Attention . . .

20% DISCOUNT

(2) PANTS SUITS . . .

TOPCOATS *and* RAINCOATS

A Complete Stock—All Sizes

PORTER-CUMMINGS CO., Inc.

936 Pacific Ave.
TACOMA, WASH.

Penalties

1. Taking more than three times out during either half.
2. Illegal delay of game.
3. Failure of substitute to report to umpire.
4. Violation of kick-off formation.
13. Team not ready to play at scheduled time.
14. Illegal return of suspended or disqualified player.
15. Failure to stop at least one second on shift play.
16. Forward pass by member of team which did not put ball in play.
17. Forward pass touched by ineligible player.
28. Striking, kneeling, or kicking opponent — half the distance to the goal and disqualification of offending player.
29. Foul within one yard line — half the distance to the goal.
30. Interference by defensive team on forward pass — first down for passing team at spot of foul.

LOSS OF FIVE YARDS

5. Failure to maintain proper alignment of offensive team before ball is snapped. Also, backfield man illegally in motion.
6. Offside by either team, or encroachment on neutral zone.
7. Attempt to draw opponents offside.

LOSS OF FIFTEEN YARDS

18. Intentional grounding of forward pass.
19. Interference by member of passing team with defensive player eligible for pass.
20. Interference with fair-catch or tackling player before ball is caught.
21. Illegal use of hands and arms by offensive players.

OTHER PENALTIES

31. Flagrant roughing of kicker—disqualification, plus fifteen yards.
32. Flagrant unsportsmanlike conduct — disqualification, plus fifteen yards.
33. Forward pass touched by ineligible player on or behind line of scrimmage — loss of down.

8. Taking more than two steps with ball after signalling for fair catch.
9. Illegal use of hands and arms by defensive players.
10. Flying block or flying tackle.
11. Running into kicker.
12. Crawling by the runner.
22. Defensive player striking opponent above shoulders.
23. Roughing the kicker.
24. Piling up, hurdling, clipping.
25. Tackling player out of bounds.
26. Coaching from the sidelines.
27. Illegal interference with defense by passing team.

34. Illegal touching of kicked ball inside opponent's 10 yard line — touchback.
35. Refusal of either team to play within two minutes after having been ordered to do so by referee — forfeiture of game.

Pacific Lutheran Athletic Staff



J. P. Pflueger

Charles "Baron" Barofsky

ASSISTANT COACH: Charles "Baron" Barofsky

The thickly-made little man with the red ballcap, "Baron" Barofsky, now is putting in his eighth year as assistant coach. Valuable as a morale builder, always in good spirits and full of pep, the "Baron" drills the linemen and builds up the fighting spirit so characteristic of Lutheran teams. "Anybody who plays in the line has to keep his mind off his troubles, otherwise he'd go crazy," says the Baron. "So I tell them to watch the other guy's feet."

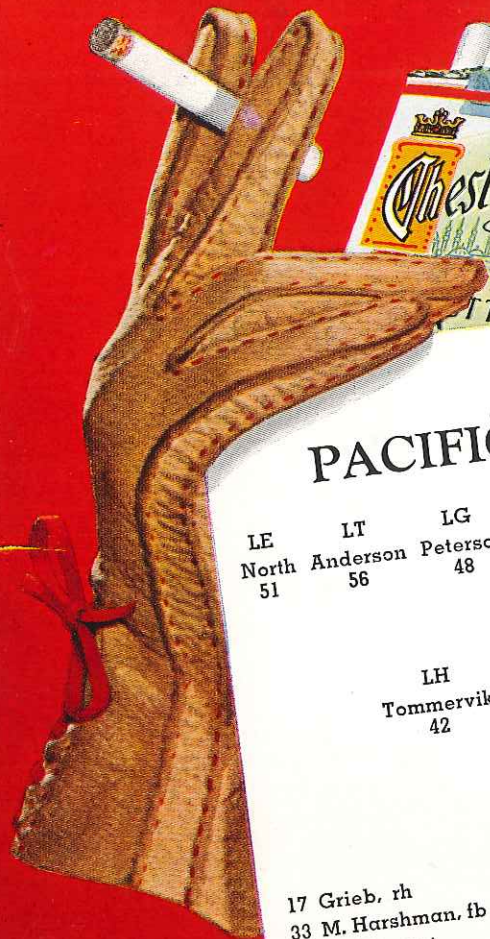
Barofsky was a quarterback whiz at Marinette high, Wis., back in 1921-22. He was captain of the University of Wisconsin frosh in 1923, and later transferred to Davis-Elkins, where he starred on one of that school's strongest teams.

"They called me 'Mercury' in those days,"

continued the Baron, "not because of fleet feet, but because I was so hard to grab."

TEAM PHYSICIAN: Prof. J. P. Pflueger

This is the 11th year of taping ankles and spanking spines at P. L. C. for "Doc" Pflueger, onetime gridman at Capital University in Columbus, Ohio. You will see Doc Pflueger on the bench, a bustling little man with a mustache. He teaches philosophy and Christianity at the college, and both serve him in good stead as a trainer of athletes. Prof. Pflueger has contributed four sons to the welfare of Lutheran football, Jesse, William and Gerhart in previous years, and Ray, a junior tackle on this year's squad.



PACIFIC LUTHERAN

LE	LT	LG	C	RG	RT	RE
North	Anderson	Peterson	Whitehead	Thorlietson	Swanson	Polillo
51	56	48	61	45	73	59
			QB			
			Lumsden			
			41			
	LH				RH	
	Tommervik				S. Harshman	
	42				46	
			FB			
			M. Harshman			
			33			

SQUAD LIST

- | | | |
|--------------------|-----------------|-------------------|
| 17 Grieb, rh | 50 Hoskins, q | 62 Ekern, t |
| 33 M. Harshman, fb | 51 North, e | 63 Schlanbusch, e |
| 40 Fallstrom, t | 52 Larson, e | 64 Bratlie, lh |
| 41 Lumsden, rh | 53 Holand, g | 65 Dubois, rh |
| 42 Tommervik, lh | 54 Iufer, e | 66 Kylo, e |
| 43 Spear, rh | 55 D'Andrea, c | 67 Yamada, rh |
| 44 Sloppy, g | 56 Anderson, t | 68 ----- |
| 45 Thorlietson, g | 57 Evancich, g | 69 Eggen, t |
| 46 S. Harshman, rh | 58 Hughes, t | 70 Fries, fb |
| 47 Kapus, qb | 59 Polillo, e | 72 Malley, fb |
| 48 Peterson, g | 60 ----- | 73 Swanson, t |
| 49 Pflueger, g | 61 Whitehead, c | |

OFFICIALS

Referee ----- Perry Mitchell
 Umpire ----- John Heinrich

At all the Games

It's CH



GONZAGA

LE Jones 42	LT Tessendorf 38	LG Barry 20	C Jaton 5 QB G. Fitzpatrick 22	RG Biner 11	RT Connors 19	RE Whaley 3
LHB Scherger 6		FB Higgins 23		RHB LaMarche 37		

SQUAD LIST

2 Clark, lg	19 Connors, lt	37 LaMarche, fb
3 Whaley, re	20 Barry, lg	38 Tessendorf, rt
5 Jaton, c	22 Fitzpatrick, q	41 Contos, q
6 Scherger, lh	23 Higgins, fb	42 Jones, le
7 Brown, rh	27 Catarro, c	43 Jansen, lg
11 Biner, rg	31 Espisito, rg	44 Evavold, lh
12 Cohn, rh	32 Henderson, rg	46 Dinndorf, lt
13 Gerstenberger, lh	33 Hille, lh	47 Johnson, rg
15 Barmon, le	34 Haynes, rt	59 Loncaric, re
18 Goodwin	35 Danielson, c	51 Deviny

OFFICIALS

Head Linesman Geo. Varnell
 Field Judge Jimmy Mitchell

CHESTERFIELD

They Satisfy

Wear a "Mum" to the Game

ANDERS

Florist

255 So. 11th :: MA in 7113

Now Enriched!

JORDAN'S

BREAD

Fresh-As-A-Daisy

at your grocer's!

The NEW Officials' Signals



Offside and violation of kickoff formation. (Penalty, 5 yards.)



Unsportsmanlike conduct. (Penalty — 15 yards.) For flagrant unsportsmanlike conduct — 15 yard penalty and disqualification.



Illegal formation or position of one or more players. (Penalty — 5 yards from where ball was put in play.)



Player illegally in motion. (Penalty, 5 yards. If from shift or huddle, 15 yards.)



Intentional grounding of forward pass. (Penalty — loss of down and 15 yard penalty from spot of preceding down.)



Unnecessary roughness, illegal defensive use of the hands. (Penalty, 15 yards.)



Crawling, pushing, or helping ball-carrier. (Penalty for helping ball-carrier, 15 yards; otherwise, 5 yards.)



Holding. (Penalty — by offense, 15 yards; by defense, 5 yards.)



Score—touchdown, field goal, or conversion.

Military salute also used for clipping, followed by striking the back of the knee with hand. (Penalty, 15 yards.) Signal also used for disqualification fouls and for running into or roughing the kicker. In the latter case, the military salute is followed by swinging the leg as though punting.



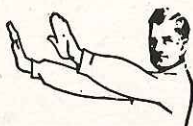
Safety.



Delay of game or extra time-outs. (Penalty, 5 yards.)



Illegal forward pass.



Interference with forward pass, pass touching ineligible player, or "screening" pass receiver. (If penalty on offense, 15 yards and loss of down; interference by defense, ball to offense on spot of foul as first down.)



Penalty refused, incomplete pass, missed field goal or conversion, both sides offside, etc.



Time out.



Illegal touching of kicked ball inside opponent's 10-yard line — touchback.

GONZAGA ATHLETIC STAFF



CLAUDE McGRATH
ATHLETIC DIRECTOR

Claude McGrath, former Bulldog quarterback, and head basketball coach for many years, is completing his third successful year as head man of the Gonzaga Athletic Department.

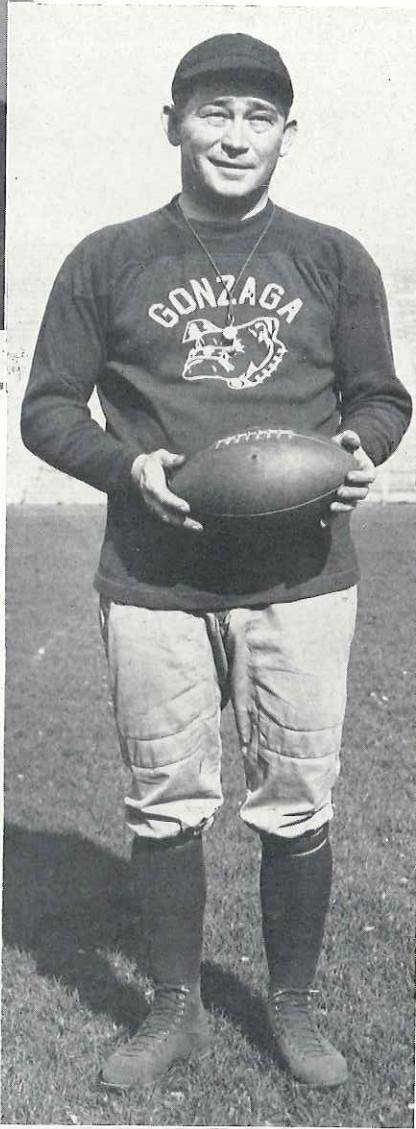
HEAD COACH

JOHN W. "PUGGY" HUNTON

John W. "Puggy" Hunton, Gonzaga '27, as head man of the Bulldogs, opens his third season as a varsity coach this year with prospects neither brighter nor darker than in past years.

In his two years at the Bulldog helm, he has maintained the Gonzaga tradition of a very small school producing a very big and dangerous football team. In his first year Hunton smacked Oregon sensationally when they were apparently Rose Bowl bound. Last year, his team rose up and belted mighty Detroit, 13 to 7.

A quick squint at the 1940 record shows five wins and five losses, which is a good percentage for any independent that risks dates with Washington State, St. Mary's, Idaho, Montana, and Detroit.



JOHN "PUGGY" HUNTON
HEAD COACH

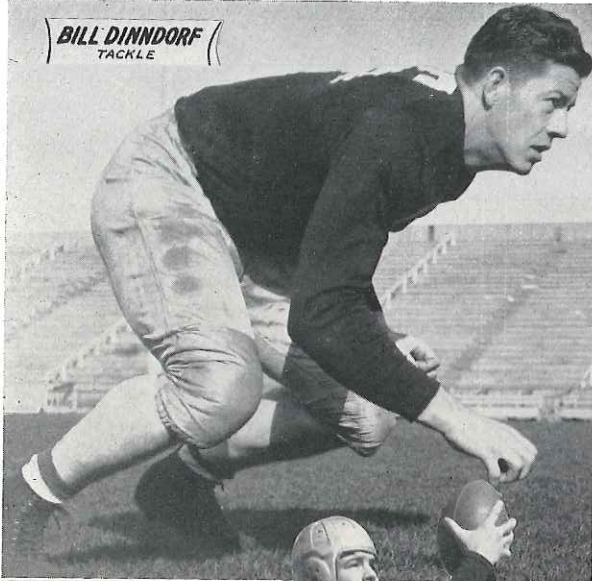
Samuel A. R. Dagley, line coach, is a renewed fixture in the Gonzaga coaching ranks. He first joined the Bulldog coaching and teaching staff (he is a brilliant instructor of literature on the side) in 1931, having come with Mike Pecarovich from Loyola of Los Angeles. After Pecarovich left in 1939, Dagley applied for a leave of absence, and did not coach the following two years. When the position of line coach again became open because of the death of John Smith, Sam returned to the job, joining the staff during the spring practice session.

Dagley combines an exhaustive knowledge of the intricacies of line play, an uncanny scouting ability, brilliant sense of humor and fine football psychology to be the perfect assistant. Lines he produces are always physically and psychologically well prepared, fast, and aggressive. The genial Irishman was graduated from Santa Clara University, where he was a guard, in 1927.

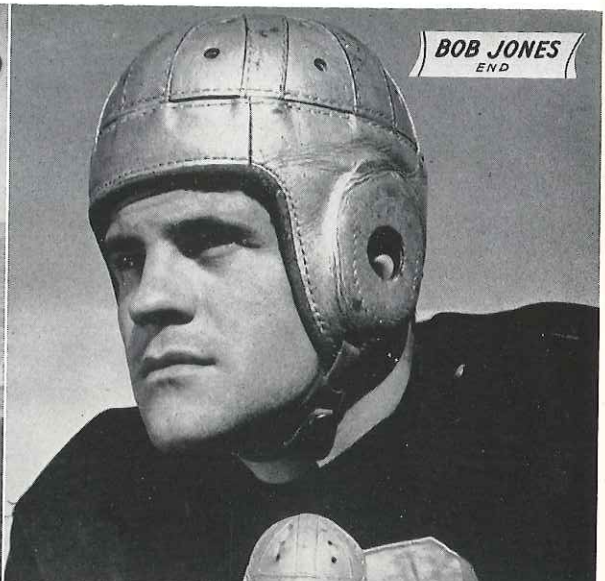


SAM DAGLEY
LINE COACH

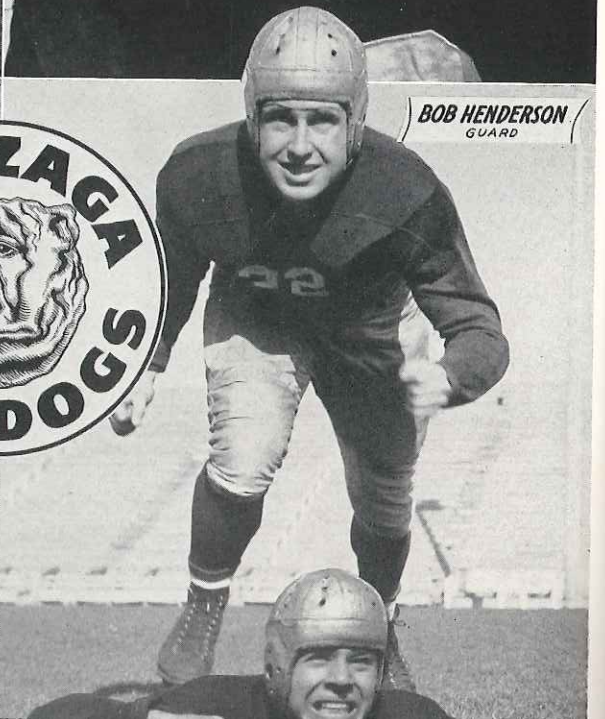
BILL DINNDORF
TACKLE



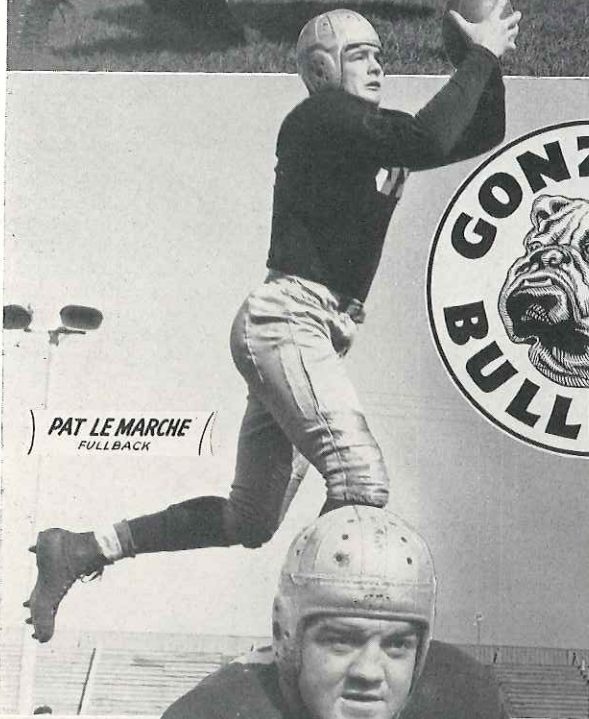
BOB JONES
END



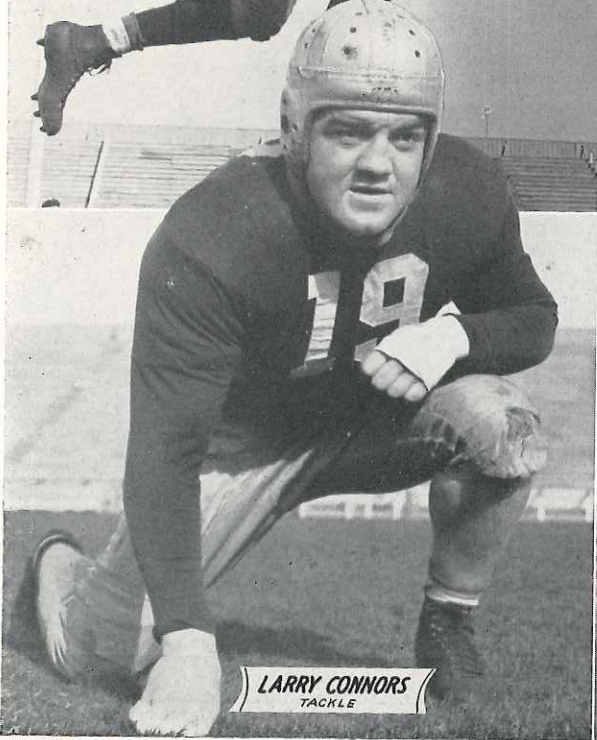
BOB HENDERSON
GUARD



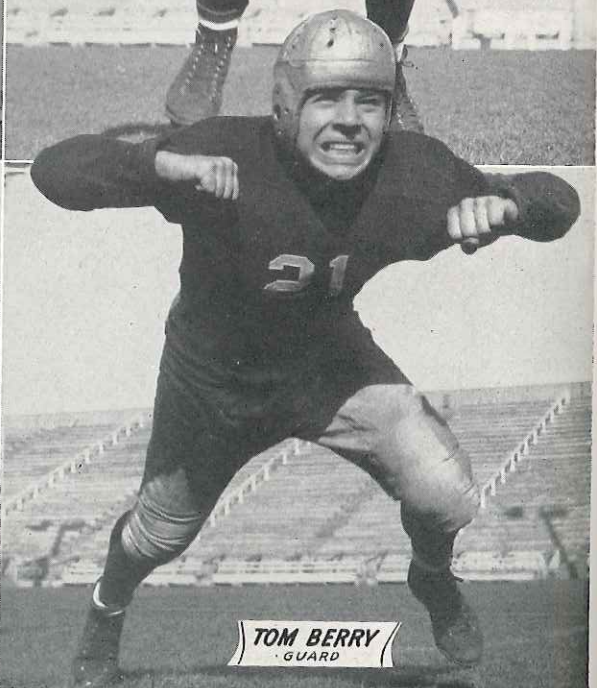
PAT LE MARCHE
FULLBACK



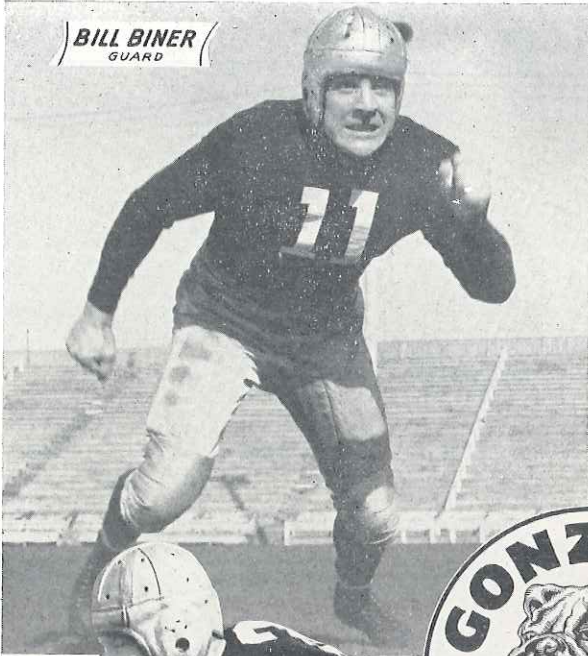
LARRY CONNORS
TACKLE



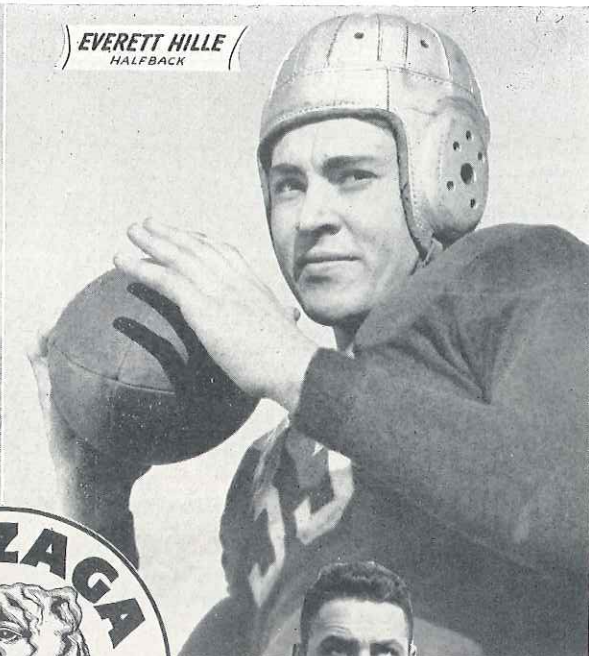
TOM BERRY
GUARD



BILL BINER
GUARD



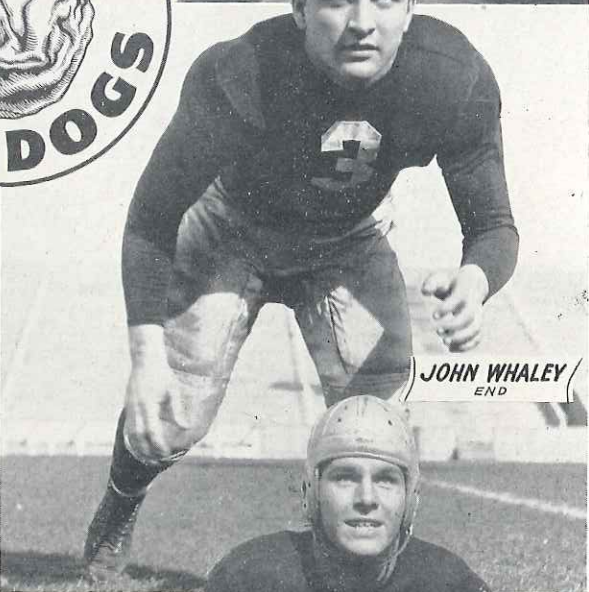
EVERETT HILLE
HALFBACK



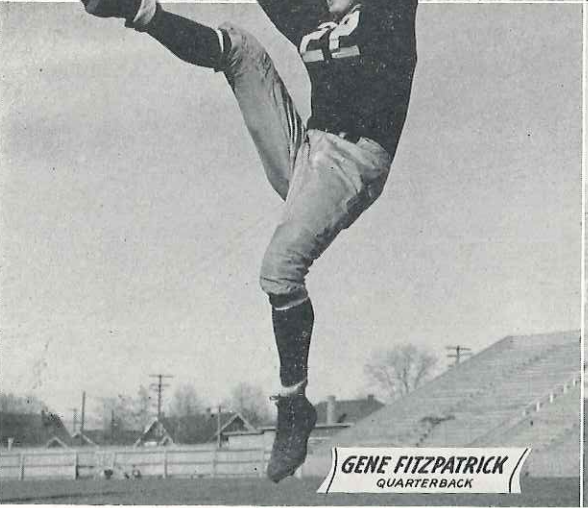
PAT HIGGINS
FULLBACK



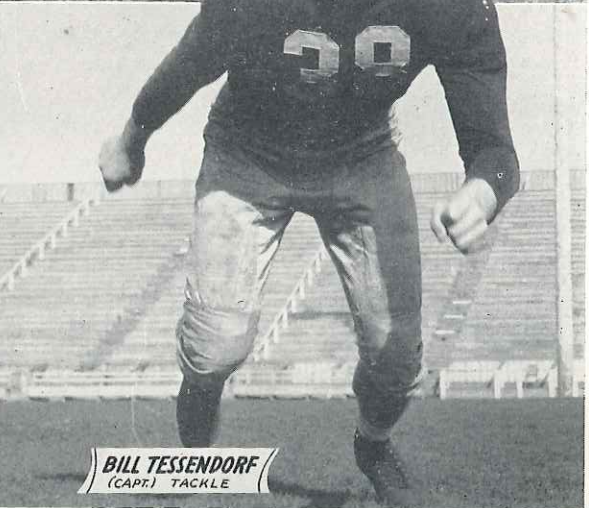
JOHN WHALEY
END



GENE FITZPATRICK
QUARTERBACK



BILL TESSENDORF
(CAPT.) TACKLE

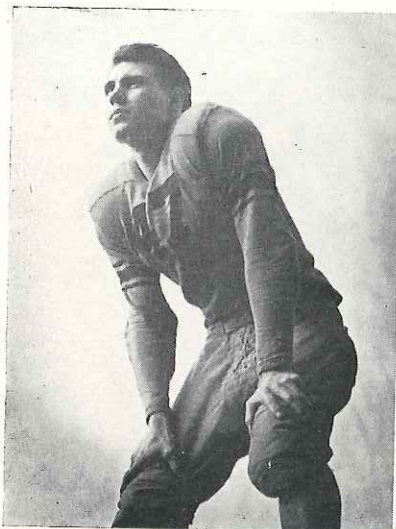


Pacific Lutheran Gladiators . . .

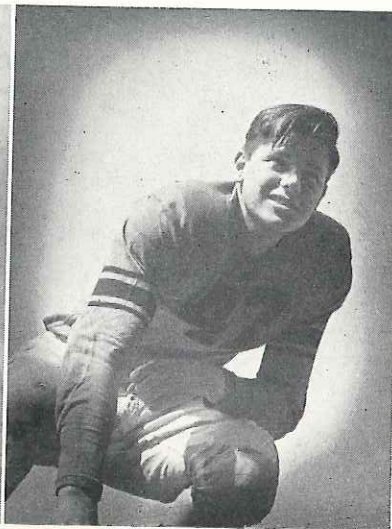


MARV TOMMERVIK, L.H.

Marvin "Tommygun" Tommervik, Little All America halfback in 1940, starts his senior season with one of the country's finest forward passing records. The Nimble Norwegian from Snohomish county has completed 150 out of 302 passes the past two years, and 30 tosses have been completed for touchdowns. He weighs 171, stands 5-8 and is 21 years old.



RAY KAPUS, Q.



RAY PFLEUGER, G.

Coming Events . . .

Texas A. & M. vs.
Washington State Col-
lege, Tacoma Stadium,
Dec. 6.

**ROUGH
RIDER**
Sportswear



For those occasions when you want to look "casually just so" . . . Rough Rider sports clothing are the mark of lasting quality, style and durability.

Compare the Prices too!

BROTMAN'S

9TH AT COMMERCE

Tacoma's Complete
OFFICE OUTFITTERS

Typewriters

Adding Machines

Calculators

Sales & Service

HAROLD E. DAHL CO.

OFFICE SUPPLIES & PRINTING

1015 Pacific Avenue

Next to Bank of California

BEST WISHES

FOR P. L. C.

TELEPHONE MAIN 7745

The Lynn Mortuary
"Superior Funeral Service"
717-719 TACOMA AVE.
TACOMA, WASH.

F. B. WINES CO.
SPECIALTY PRINTERS

NO JOB TOO LARGE, OR TOO SMALL

"The Only Printing Plant on the Pacific Coast Specializing in the
Production of Calendars and Advertising Specialties"

UNION MADE



MAin 2411

TACOMA

307 East 28th St.



Styled Right! . . . Made Right!

Fashion Tailored Clothes

- 1941-42 Patterns
- Wanted Colors
- Clever Models

23⁵⁰

Buy on Sears Easy Payment Plan

Where smart men gather you'll find Fashion Tailored Suits and Topcoats right out in front! Rugged, durable . . . yet beautifully tailored to the finest detail. Blues, browns, greens, greys in wide assortments of fine suitings.

Select yours now . . . be well dressed!

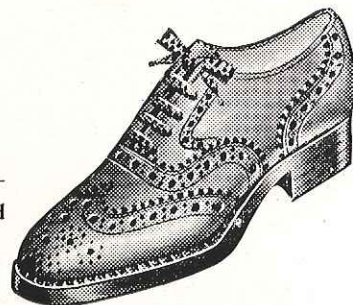
Sears Famous

"Sandy Nevins"

SHOES FOR MEN

395

Long wing tipped brogue—
styled for he-men! Antiqued
brown skeet-grained leather.
Sizes 6 to 12.



Men's
TOPCOATS

17⁹⁵

Well styled and tailored for
fall and winter wear.
Smarter fabrics.

SEARS, ROEBUCK AND CO.

Broadway
at 13th St.