

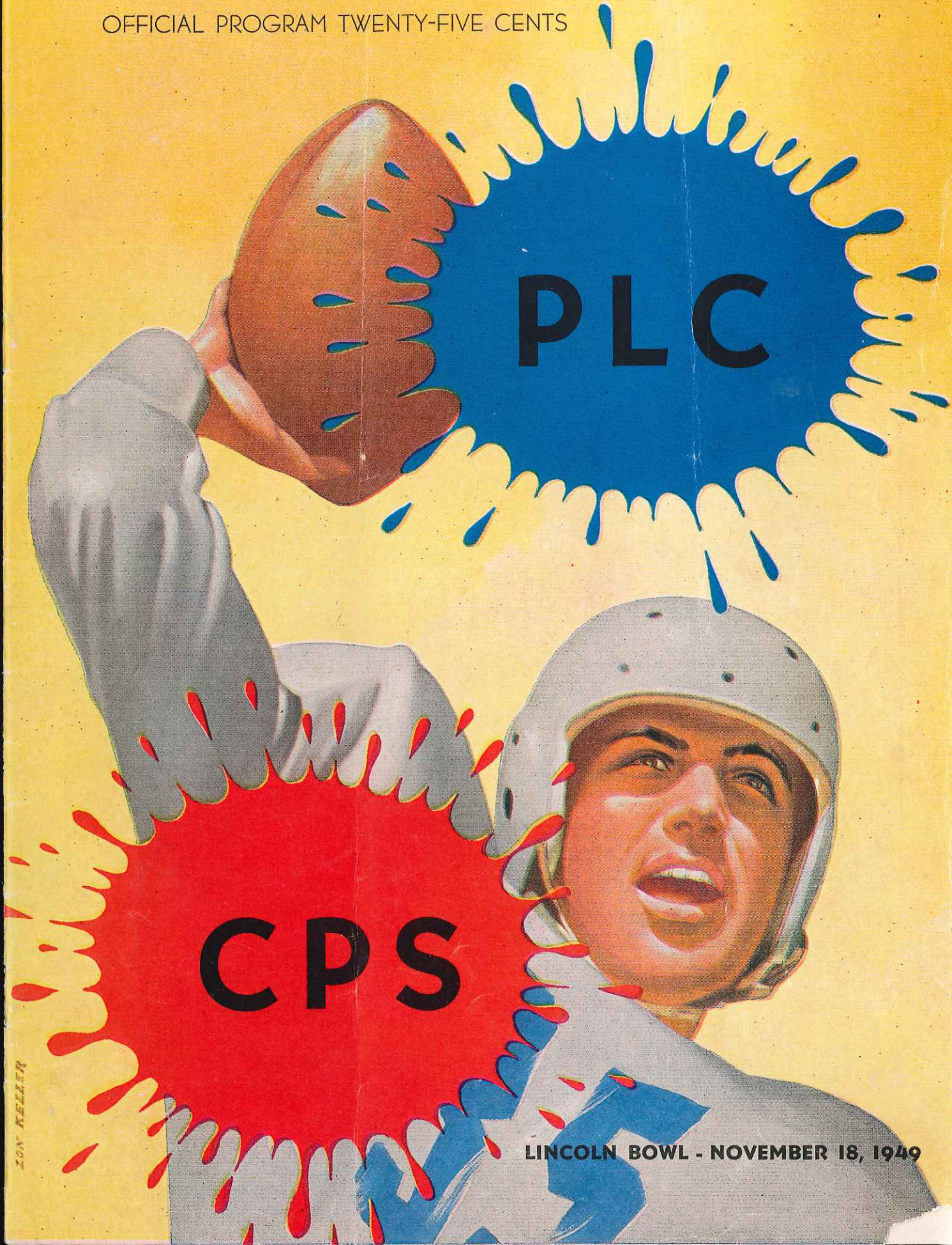
OFFICIAL PROGRAM TWENTY-FIVE CENTS

PLC

CPS

LINCOLN BOWL - NOVEMBER 18, 1949

JOHN KELLER



National Auto Parts & Johnston's Shop-N-Save

Bring You Football Officials' Signals

Auto Parts



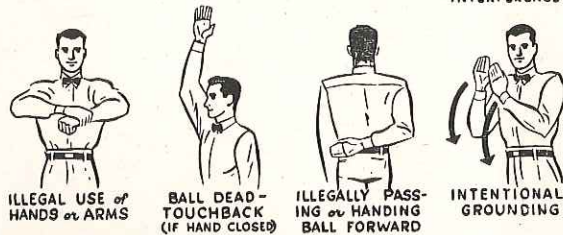
*We Can Save
You Money on:*

Accessories



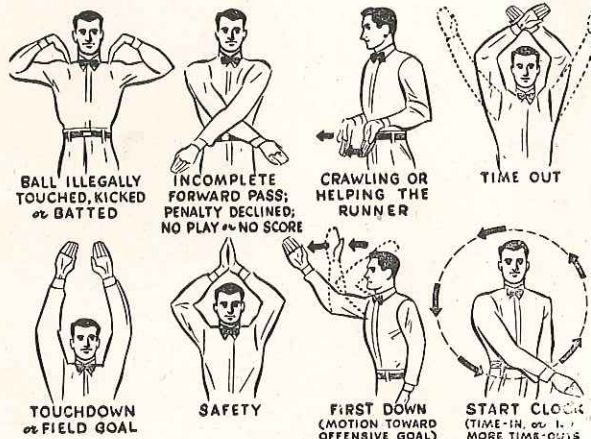
Paint

Precision-Built
Engines



Electrical
Supplies

Machine Shop
Service



Hardware

Household Wares

NATIONAL AUTO PARTS

"We Have It"

4001 Pacific Avenue

OPEN SATURDAYS

HI. 8423

Johnston's Cut Rate

SHOP-N-SAVE

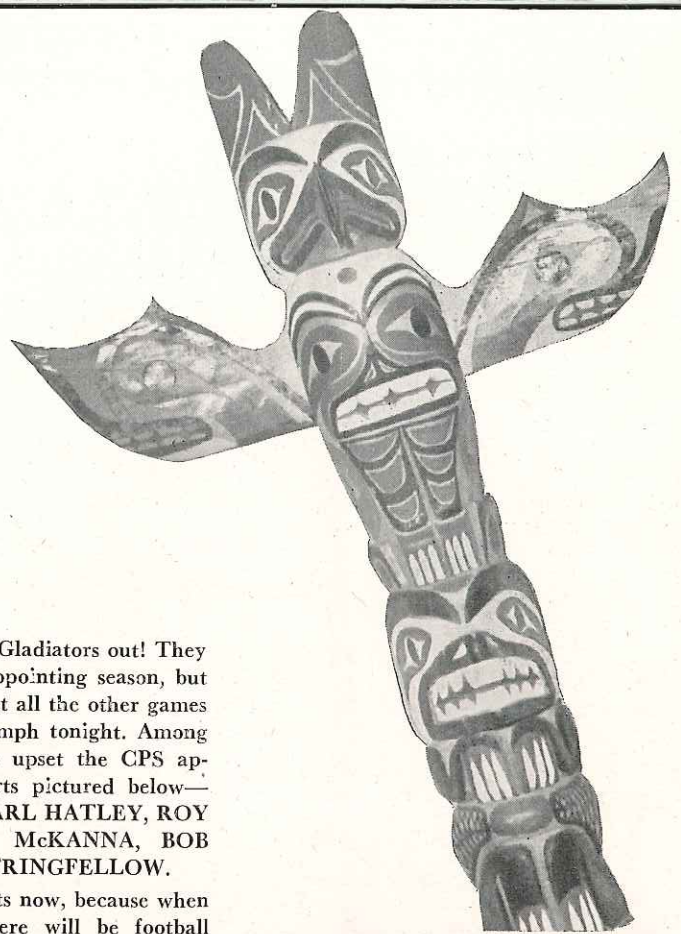
207 South 38th and Pacific

OPEN SATURDAYS AND SUNDAYS

HI. 4663

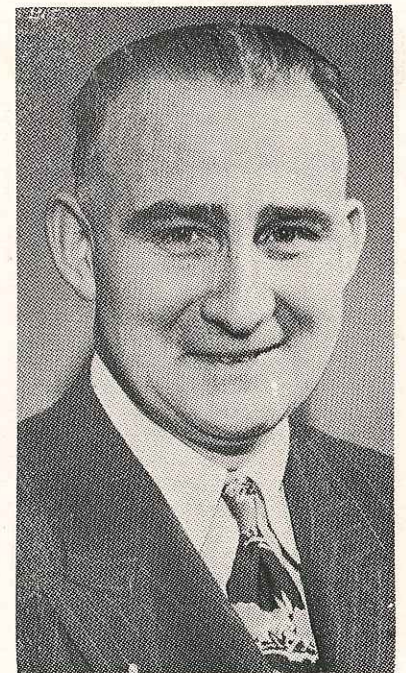
WELL, FOLKS, this is the tilt you've been waiting for—the 1949 Totem Bowl battle—featuring those two Tacoma arch-enemies, Pacific Lutheran College and College of Puget Sound.

A lot is at stake in tonight's gigantic tussle. If CPS emerges victorious, the Lumberjacks will bring to a glorious climax one of the most successful seasons in the college's grid history. A win would mean that JOHNNY HEINRICK and his squad would be able to hang on to the Y.M.B.C. TOTEM POLE, symbolic of city supremacy, and would ease themselves into a deadlock with Eastern for Evergreen laurels.



But don't count the Gladiators out! They have had a rather disappointing season, but the Luthers would forget all the other games if they would only triumph tonight. Among the Parklanders out to upset the CPS applecart are the stalwarts pictured below—GLEN HUFFMAN, CARL HATLEY, ROY HAGEN, BLAINE MCKANNA, BOB BRASS, and BILL STRINGFELLOW.

Sit back in your seats now, because when the fighting starts, there will be football fireworks like you've never seen before.



California
OYSTER HOUSE

Anton Barcott, *manager*

930 Pacific Avenue MAin 9839

Gifts for the Home
DANIELS HARDWARE

On the Mountain Highway at Garfield Street

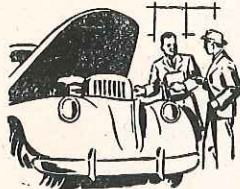
THE STATIONERS, Inc.

Royal Portable
Typewriters



Complete Line of Zipper Ring Binders and Supplies

926 Pacific MAin 2153 927 Commerce



EXCELLENT
LUBRICATION

at

Lewis Richfield
Service

Mt. Highway at Garfield

BURY 'EM, BOYS!

Puget Sound Nursery

"We Plan and Plant"

and Garden Shop

"Distinctive Gifts"

9201 Pacific Avenue

GA. 2151

OIL SALES and Service

For Prompt Deliveries of MOBILHEAT
Stove and Diesel Oil

Call MAin 6137



764 COMMERCE

Bunge's Service

WESTINGHOUSE APPLIANCES

Laundromats -- Refrigerators -- Ranges

Texaco Fuel Oil Delivery

1624 Puyallup (across bridge)

WA 8503

Cheers for the Team . . .

. . . and cheers for the girls who
shop at Helen Davis

CASUALS FOR CAMPUS

ADORABLE DATE DRESSES

ENCHANTING EVENING WEAR

HELEN DAVIS

917 BROADWAY



*After
the Game
it's--*

Medosweet ICE CREAM TIME

AT YOUR FAVORITE FOUNTAIN OR GROCER

MEDOSWEET DELUXE ICE CREAM



"They fly through the air with the greatest of ease . . ." That's Hank Habegger (80), and Glen Huffman (88), two outstanding newcomers in the PLC end department .

CPS Holds Edge . . .

Since the beginning of their intra-urban series, the Luthers and Loggers have clashed 10 times. The North Enders hold a two-to-one edge in number of victories, having captured six to the Gladiators' three. However, until the last game, PLC led in scoring. CPS now leads 118-97.

	PLC	CPS
1931	0	20
1932	0	25
1938	0	6
1941	47	0 (hooray!)
1942	6	14
1946	13	7
1947	19	0
1948	6	6
"	6	13
1949	0	27 (ouch!)
"	??	??

Everything from Soup to Nuts

GARFIELD VARIETY

If You Don't See It, Ask for It!

Across from PLC

Garfield Street

LORIMER I. LANGLOW

Printer

931½ Commerce Street

MAin 1066

BEITZ SERVICE STATION

Shell Lubrication
Gas - Tires - Batteries



Airport Road & Pacific Ave., Tacoma

GR. 8539

PARKLAND PHARMACY

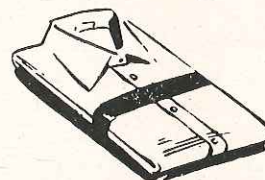
Phone
GR. 8519



Prompt
Prescription
Delivery

On the Mountain Highway at the New Bank Corner
Pacific Avenue and Airport Road

SHIRTS 3-day Service



PUYALLUP LAUNDRY
and Dry Cleaners

It's Good Strategy

to shop at the

Parkland Centre

CHECK THESE ADVANTAGES:



- 1 → Complete shopping center under one roof.
- 2 → Plenty of Free Parking.
- 3 → Brand new, home-owned shops.
- 4 → Friendly, personalized service.
- 5 → Ideally located in the heart of the growing south end.

Lick Those Loggers

CENTRE CLEANERS

3-DAY SERVICE

COLLEGE RADIO

RADIO — TELEVISION — APPLIANCE

DONUT BAR

"TAKE A DOZEN TO THE GAME"

JOHNSON'S DRUG STORE

FOUNTAIN — SUNDRIES — PRESCRIPTIONS

KNEEHIGH CHILDREN'S SHOP

EVERYTHING FOR YOUR CHILD!

MYRTLE MOCKEL

WOMEN'S APPAREL OF DISTINCTION

PARKLAND MEN'S SHOP



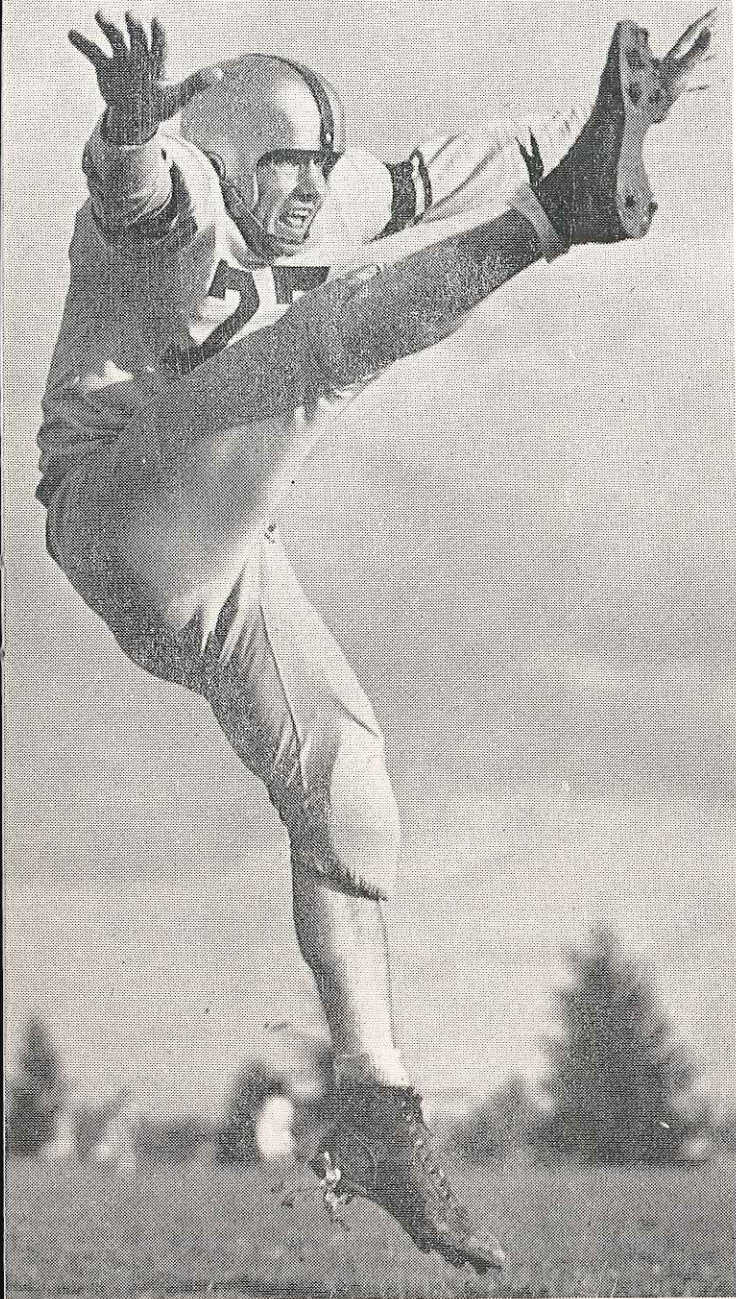
PARKLAND SHOE STORE

STELLA'S FLOWERS

COMPLETE FLORAL SERVICE GR. 7863

SUNSET FURNITURE

"The Place to Go for the Brands You Know"



This is John Jurkovich, PLC's triple-threat man. He can pass, kick, and run. However, you won't see him in action tonight; he injured his knee last Saturday.



Jurkovich Is Out . . .

Sorely missed by the Gladiators tonight will be John Jurkovich, 210-pound fullback from Anacortes, who injured his knee in the second quarter of last Saturday's PLC-Southern Oregon duel.

Jurkovich is the second highest in total offense in the Evergreen circuit, being surpassed only by Whitworth's sensational fullback, Ed Kretz. Jurkovich has a total of 737 yards to his credit this season.

This will be the second straight year that the Luthers have had to tackle CPS minus the services of their backfield ace. Last season, big John broke a bone in his wrist in the Western Wash. fracas.

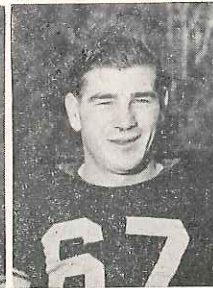
Gladiator hopes for a victory tonight lie in the pitching arm of Lowell Knutson and the plunging and running of Captain Jack Guyot and Halfback Gene Strandness. Knutson has moved up to third place among conference passers. He was the Scandinavians' No. 1 pitcher last weekend as PLC rolled up 215 yards through the air.


But PLC's potent airpower won't help much if the Parklanders can't halt the Lumberjacks' powerful line smashes that have added up to the best rushing record in the league. So besides sharpening up their passing attack this week, the Lutherans have also been drilling hard on defense.

Bob Dinsmore

Hal Fallstrom

Punk Wohlhueter






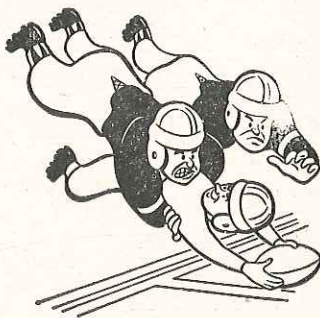
★ GOLF ★

THE YEAR
AROUND GAME

**College
Golf Course**

GR. 8559





**SMOTHER
'EM,
LUTES!**

COMPLIMENTS OF A FRIEND



The Loggers will keep a close watch on Southpaw Lowell Knutson tonight, because he is one of the key players in the Gladiator attack, especially since Jurkovich was sidelined. Lowell is second in pass receiving in the league with 20, and third in passing with 16 completions in 34 tries. Now in his junior year at Parkland, Knutson is a grad of Queen Anne, where he was chosen to lead the Seattle team in the Seattle-State prep fray in 1947. He is a pre-theology student.

Central Market

Wholesale and Retail Meats
BUY WITH CONFIDENCE

BR. 8431

1122 Market St.

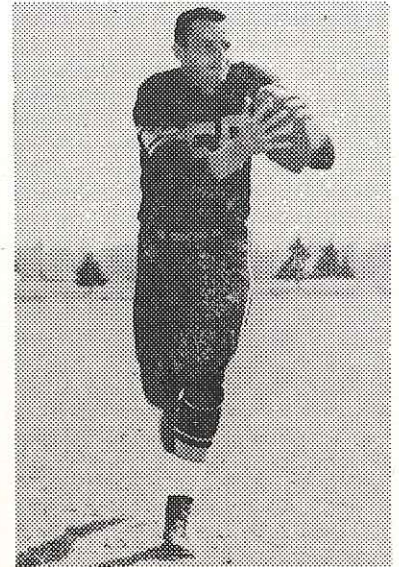
ORDER NOW—

Your Personalized Christmas Cards
COMPLETE STOCK

HAROLD E. DAHL CO.

1015 Pacific Avenue

MAin 6161



VERN MORRIS

★

Luthers Are Win-Hungry

Some of the players on the field tonight have played more than 30 games for the Black and Gold. During that time they have helped beat CPS twice, win the conference title once, and capture the mythical west coast small college championship once, to mention a few of their feats.

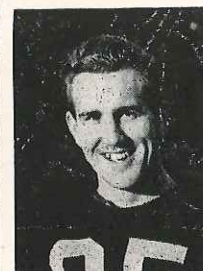
But the nine graduating gridsters would probably consider tonight's battle the high point of their grid careers if they could only defeat the 1949 Loggers, who up until now have been having things pretty well their own way.

But only a flawless performance from every man on the squad can make a victory possible. Coach Mary Tommervik has been stressing all week. Victories have been few and far between for the

Rick Daniels



Walt Oden



Hal Schrupp





STEINAR GORUD

Glads this season, but a triumph over the Lumberjacks would soon take care of that.

King Cap and Gown is going to claim Captain Jack Guyot, Steinar Gorud, Blaine McKanna, Hal Fallstrom, Bud Hatley, Harry Peterson, Jack Carbone, Gene Strandness and Wayne Brock. Another senior, Roy Hagen, who has been sidelined since the first CPS contest, may see limited action tonight.

It is no secret that PLC will take to the airwaves in an attempt to score a few touchdowns. Trying to plow through CPS's stout forward wall is as futile as trying to move Mt. Rainier.

Last weekend, the Tommer-vikings completed 215 yards through the sky at Ashland. Threats of rain tonight have caused some anxiety in the Gladiator camp. But if the weather man holds back the dewdrops, you can expect to see a lot of leather sailing off the fingertips of Lowell Knutson, Bill Stringfellow, Gene Strandness, and Wayne Brock.

Ever since the Methodists annexed the totem pole last fall, there has been a vacant spot in the PLC trophy case. Every last man on the Gladiator roster will be out tonight to bring the pole back to Parkland.



GUARD JACK CARBONE

CAMPUS-STYLED MENSWEAR

by Hyde Park, Manhattan, McGregor, Hickok and other topnotch names!

1118 **THE HUB** Friendly Credit
Pacific



"Where Customers Send Their Friends"

WEBER LUMBER COMPANY

Retail

Lumber and Building Materials

MAin 9119

Tacoma, Wash.

PARKLAND AUTO PARTS

now in connection with

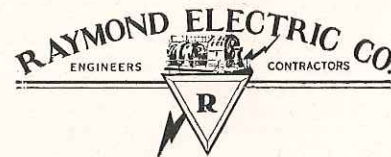


**PARKLAND
FUEL OIL
& SERVICE**



GRanite 8112

Mt. Highway at So. 120th.

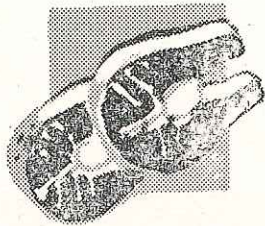


813 Pacific Avenue

BR. 1712

*We would be pleased to
serve you . . . !*

FLETCHER'S MARKET



GRanite 8550

Free Delivery

Holiday & Edworthy, Inc.

Established 1889

Sheet Metal and Roofing
Contractors

Phone GA. 4484

6240 South Tacoma Way

Winthrop Men's Shop

The store for men . . . and
women who shop for men

781 Broadway — In the Winthrop Hotel Building

Stop at . . .

Vern's

for

Delicious Hamburgers — Hot Dogs — French Fries
Jumbo Milkshakes

NINTH AND PACIFIC

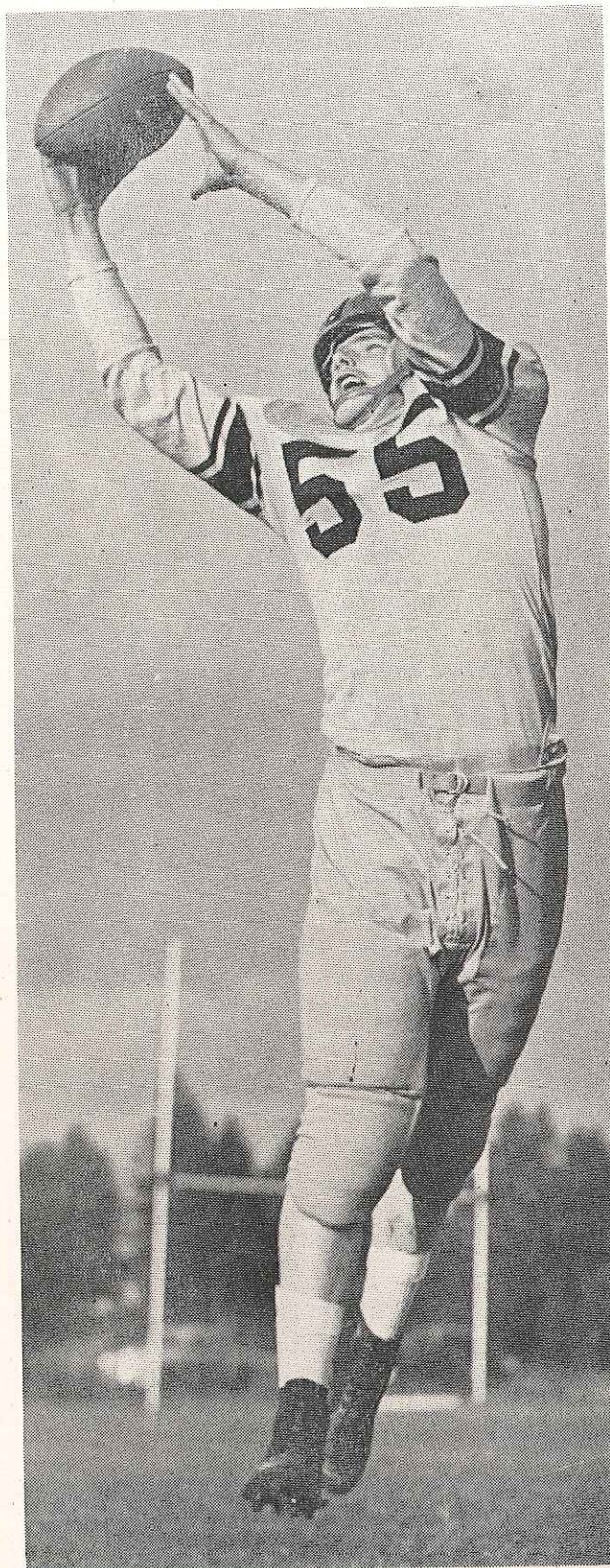
Home of

CROSLY SHELVDOR
REFRIGERATORS and RANGES
APEX AUTOMATIC WASHERS

Parkland-Brookdale Electric

13022 Pacific Avenue

GRanite 6789



Big Vern Morris's sticky fingers may be the key to a Pacific Lutheran victory tonight. An all-Evergreen end last season, Vern has shown in recent games that he hasn't lost any of his grid ability. At Southern Oregon last weekend, Morris took a 17-yard pass from Lowell Knutson and plowed 45 yards to tabulating territory. Due to his pass-receiving talents, he not only plays end on offense, but is the Lute safety on defense.

Pacific Lutheran College ROSTER



	Pos.	Wt.	Age	High School
L. Amundson, 63	E	180	20	Queen Anne
Bob Brass, 52	F	195	21	Ballard
J. Bogrand, 60	H	165	18	Puyallup
G. Bottin, 86	F	200	24	Iowa
Bob Brog, 56	H	184	17	Lincoln (Sea)
H. Burger, 66	E	185	19	Mount Vernon
J. Carbone, 69	G	200	25	Clover Park
R. Daniels, 79	G	200	19	Lincoln (Tac)
B. Dinsmore, 74	E	195	23	Eatonville
H. Fallstrom, 67	T	195	24	Roy
C. Forsland, 85	G	200	18	Lincoln (Tac)
C. Garrison, 78	C	175	22	Patterson, N. J.
S. Gorud, 64	C	180	25	Ballard
Ray Green, 87	T	225	19	South Kitsap
Jack Guyot, 50	F	185	24	Ballard
C. Hatley, 75	T	210	23	Arlington
G. Huffman, 88	E	192	18	Lincoln (Tac)
J. Johnson, 59	C	190	18	Everett
J. Jurkovich, 77	Q	200	20	Anacortes
L. Knutson, 61	H	170	20	Queen Anne
B. McKanna, 72	H	160	24	Longview
O. Magnuson, 80	T	185	18	Lincoln (Tac.)
V. Morris, 55	E	210	23	Bellarmino
G. Nowadnick, 57	Q	170	19	Chehalis
Walt Oden, 76	C	190	23	Lincoln (Tac)
D. Olsen, 71	G	190	25	Stanwood
J. Schindele	F	195	23	Silverdale
H. Schrupp, 53	E	175	20	Ballard
Gene Shaw, 70	G	185	22	Port Orchard
G. Strandness, 54	H	190	20	Olympia
Stringfellow, 83	Q	185	20	Clover Park
Swanson, 58	F	150	19	Puyallup
F. Tegnell, 84	T	205	20	Puyallup
G. Werner, 62	Q	180	19	Lincoln (Sea)
Wohlhuetter, 68	H	179	19	Anacortes

United Mutual Savings Bank

Tacoma's Only Savings Bank
WASHINGTON BUILDING

Member Federal Deposit Insurance Corporation

GEO. D. POE AND CO.

REAL ESTATE LOANS

INSURANCE

MAin 9191

Tacoma



*Fresh Fall
Fashions*

DESIGNED WITH
YOU IN MIND!

It's
First
to

Klopfenstein's

Home of
Hart-
Schaffner
& Marx
CLOTHES

for the
College
Crowd

935 BROADWAY



CRAWFORD'S SEA GRILL

DELICIOUS SEA FOODS
CHARCOAL-BROILED STEAKS AND CHOPS
CHICKEN -- TURKEY -- STEAKS

★ VISIT THE STAR ROOM AFTER THE GAME ★

505 Broadway

MAin 3330

PACIFIC LUTHERAN COLLEGE

LE	LT	LG	C	RG	RT	RE
Schrupp	Green	Daniels	Gorud	Carbone	Hatley	Morris
53	87	79	64	69	75	55

Q
Lyckman
51

LH
Strandness
54

F
Guyot
50

RH
Knutson
61

SQUAD LIST

50 Guyot, b	62 Werner, q	75 Hatley, t
51 Lyckman, b	63 Amundson, e	78 Garrison, c
52 Brass, b	64 Gorud, c	79 Daniels, g
53 Schrupp, e	65 Waldorf, g	80 Magnuson, t
54 Strandness, b	66 Burger, e	81 Peterson, t
55 Morris, e	67 Fallstrom, t	83 Stringfellow, q
56 Brog, b	68 Wohlhuetter, b	84 Tegnell, t
57 Nowadnick, b	69 Carbone, g	85 Forsland, g
58 Swanson, b	70 Shaw, g	86 Bottin, b
59 Johnson, c	71 Olsen, g	87 Green, t
60 Bogrand, b	72 McKanna, b	88 Huffman, e
61 Knutson, b	74 Dinsmore, c	

OFFICIALS

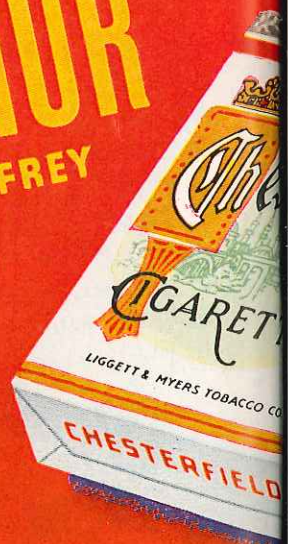
Referee.....	Jimmy Mitchell	Head Linesman..	A. J. Lindquist
Umpire.....	Joe Koenig	Field Judge.....	Dick Clark

CHESTERFIELD
RADIO AND TELEVISION

"Smoke Out"
Always Buy



ARTHUR
GODFREY



ARTHUR GODFREY—Next-door neighbor
to 90 million people! You look at him—
listen to him—laugh with him and love him!

ALL CBS RADIO AND TELEVISION STATIONS

Copyright 1949, Liggett & Myers Tobacco Co.

MILDER CHESTERFIELD

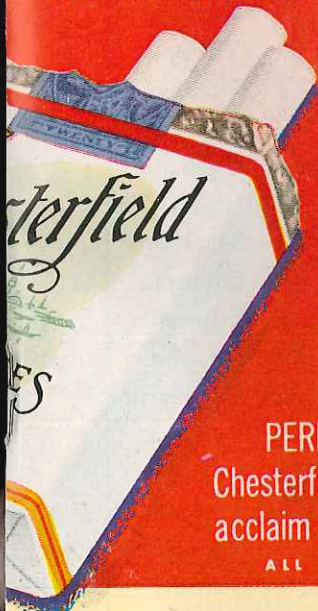
D'S BIG THREE
VISION STARS SAY...

YOUR cigarette
"Chesterfield"

BING
CROSBY

BING CROSBY — Through his records,
his movies, and his radio programs,
Crosby has brought more pleasure to more
people than any other living man.

ALL CBS RADIO STATIONS



PERRY

COMO

PERRY COMO — Now in his seventh year as
Chesterfield's great radio and recording star. Today, millions
acclaim him as television's greatest singing star.

ALL NBC RADIO AND TELEVISION STATIONS

COLLEGE OF PUGET SOUND

LE Carlson 39	LT Hermesen 44	LG deCarteret 34	C Notley 42	RG Turnbull 36	RT Hegstrom 31	RE Brown 40
			QB Heinrick 27			
LH Light 10		FB Robbins 33		RH Kalapus 14		

SQUAD LIST

10 Light, b	22 Gilsdorf, g	34 de Carteret, g
11 Sulenes, b	23 Greenwood, e	35 Boyle, c
12 Spalding, b	24 Murdock, D., b	36 Turnbull, g
13 Espeland, b	25 Larson, b	37 Viafore, b
14 Kalapus, b	26 Demko, g	38 Pond, t
15 Annas, e	27 Heinrick, b	39 Carlson, c
16 Buford, b	28 Erwin, b	40 Brown, e
17 Thompson, e	29 Ryan, c	41 Lee, g
18 Pollom, e	30 Martineau, c	42 Notley, c
19 Martin, b	31 Hegstrom, t	43 Newhart, b
20 Ross, b	32 Wood, g	44 Hermesen, t
21 Murdock, G., g	33 Robbins, b	45 Quast, t

D

Largest selling cigarette in America's Colleges
(BY LATEST NATIONAL SURVEY)

You Can Have a Brand New Home

FOR AS LITTLE AS
\$35.78 A MONTH
and only \$300 down

Picture windows, beautiful white enamel kitchen, laundry trays, automatic hot water, 4-piece bath including shower, hardwood floors, streets graded, graveled and oiled.

See the new Automatic Wall Furnace, Electric Ignition and Thermostatic control.

2-BEDROOM for Only \$6,300

\$300 DOWN — \$35.78 PER MONTH

3-BEDROOM for Only \$6,995

\$700 DOWN — \$36.83 PER MONTH

Located in **PARKLAND**

Built by

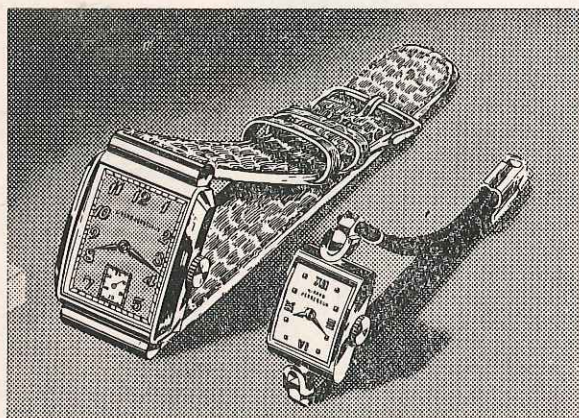
20th Century Homes, Inc.

A BRIGGS ENTERPRISE

BR. 8327

1107 "A" Street

Watches of Distinction



Alan Maurmann
"In the Winthrop"

777 Broadway

Jewelry to Thrill Everyone

College of Puget Sound ROSTER

★

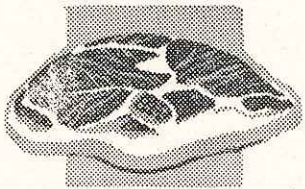
	Pos.	Wt.	Age	Home
E. Annas, 15	E	171	19	Enumclaw
D. Brown, 40	E	205	22	Tacoma
R. Bodine, 29	E	186	19	Auburn
D. Boyle, 35	C	192	19	Spanaway
D. Buford, 16	B	150	20	Seattle
B. Carlson, 39	E	203	20	Tacoma
B. Demko, 26	G	185	19	Buckley
H. De Carteret, 34	G	170	24	Sumner
W. Erwin, 13	B	180	19	Bremerton
W. Espeland, 13	B	185	20	Tacoma
L. Gilsdorf, 22	G	195	23	Tacoma
D. Greenwood, 23	E	179	25	Bremerton
M. Hegstrom, 31	C	204	21	Tacoma
J. Heinrick, 27	B	165	23	Tacoma
D. Hermsen, 44	T	230	24	Tacoma
L. Kalapus, 14	B	170	22	Tacoma
D. Larson, 25	B	160	21	Tacoma
Don Lee, 41	G	217	25	Tacoma
Mel Light, 10	B	175	21	Tacoma
H. Martin, 19	B	174	25	Tacoma
L. Martineau, 30	C	182	23	Tacoma
D. Murdock, 24	B	185	19	Valley
G. Murdock, 43	G	178	17	Valley
J. Newhart	B	165	19	Tacoma
E. Notley, 42	C	185	20	Tacoma
N. Pollom, 18	E	195	24	Chehalis
H. Pond, 38	T	212	26	Crewe, Va.
B. Quast, 45	T	195	22	Marysville
B. Robbins, 33	B	190	22	Olympia
L. Rodgers	B	175	21	Edmonds
B. Ross, 20	B	181	20	Vaughn
Bob Ryan	E	200	23	Gig Harbor
R. Spalding	B	160	21	Tacoma
J. Sulenes, 11	B	170	24	Olympia
I. Thompson, 17	E	174	23	Tacoma
L. Turnbull, 36	G	203	23	Tacoma
A. Viafore, 37	B	169	18	Tacoma
P. Whitcomb, 21	T	210	20	Seattle
W. Wood, 32	G	220	25	Sumner



Among those who are playing their last college gametonight are the five Logger linemen pictured above: Guard Lee Turnbull, End Norm Pollom, Center LaVerne Martineau, Guard Les Gilsdorf, End Dick Brown

★

★



**HIGHER
QUALITY**
Lower Cost

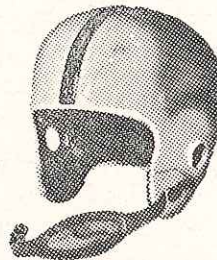
at

Alvstad's Market

(Formerly JOE'S MARKET)

Garfield Street

GR. 8560



Wilson
Athletic Goods

for
WINNING TEAMS

Distributed by

DILL HOWELL

SPORTING GOODS

929 COMMERCE

Always Buy . .

**Jordan's
Good Bread**

★

"In the Gingham Wrapper"

★

Jordan Baking Co., Tacoma

**GOOD LUCK,
GLADIATORS**

COMPLIMENTS OF A FRIEND

Headquarters

BIG GAME PROCESSING
at the

PARKLAND LOCKERS

1,000 LOCKERS

Aging -- Cutting -- Aluminum Foil Wrap -- Labeling
Dating -- Quick Freezing

11012 Pacific Avenue

GRanite 7111

Tacoma's Quality Jewelers

Since 1889

MIEROW'S

1105 Broadway

Opposite Fisher's

CPS Boasts Fine Record

Tonight is the night. The Loggers have to win to tie for the Evergreen title and to hold on to the Y.M.B.C. totem pole.

And it is not surprising that most prognosticators have established CPS as the favorite by three or four touchdowns after glancing at the Nosth Enders' record.

CPS's outstanding defensive record not only highlights statistics of the Evergreen league, but ranks as one of the best in the nation. The Heinrick-men have allowed the opposition only 2.6 yards per play in the seven games to date. The Logger line is tightest of all



GUARD LES GILSDORF



BACK RAY SPALDING

on rushing plays, where CPS foes have been able to gain only 1.7 yards a try.

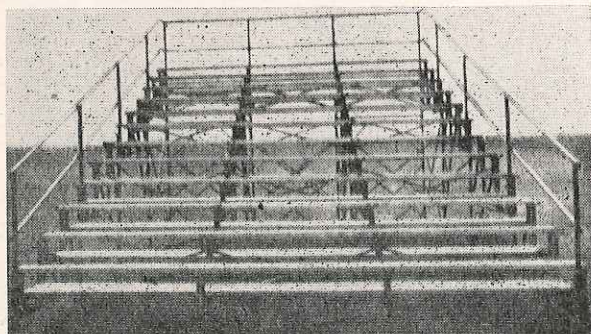
And the Axemen have nothing to be ashamed of in the offense department either. They lead the loop in rushing with 1,655 yards in 418 plays and are second only to Whitworth in total offense. Mel Light has the circuit's best rushing average with a 7.6 yards-per-play figure. Light ranks



LOWER SEATING COST

UNIVERSAL'S

PORTABLE BLEACHERS



★ *Up Faster -- Easier*

W. A. "BILL" OSBORNE, *Owner*



Smith Floral Co.

L. E. RYNNING, *Owner*

1716 South 56th Street



GO GET 'EM,
BOYS!

Compliments of

**Johnson &
Anderson**

General Merchandise

"The Store That Has It"
ON THE MT. HIGHWAY AT PARKLAND

fourth in the Evergreen scoring parade with 42 counters.

Twelve seniors play their farewell game tonight. Dick Brown, Ing Thompson and Norm Pollom are ends. Les Gilsdorf, Warren Wood and Lee Turnbull are guards trotting out on the greensward for the last time. Captain Dick Hermsmen winds up four years of duty, as does Verne Martineau. Backs bidding adieu to college football after tonight are Mel Light, Bob Robbins, Howie Martin and Jim Sulenes.

However, complete satisfaction with their record to date and complacency toward the threat offered by PLC have left the Loggers ripe for an upset defeat, Coach Heinrick has been warning his gridsters in no uncertain terms.

Recent workouts have been devoted to defensive drills against the spread and semi-spread passing formations which the Lutherans are expected to employ tonight, and polishing up new offensive



Ing Thompson

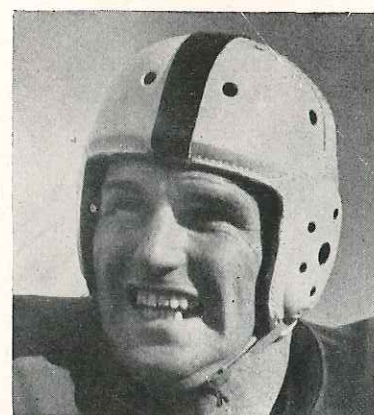
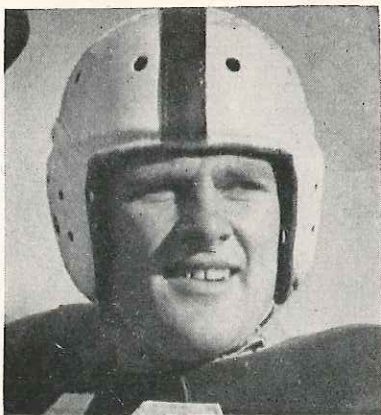
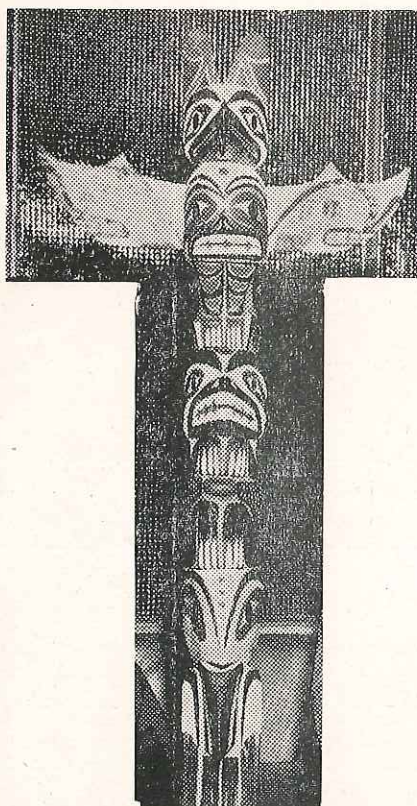


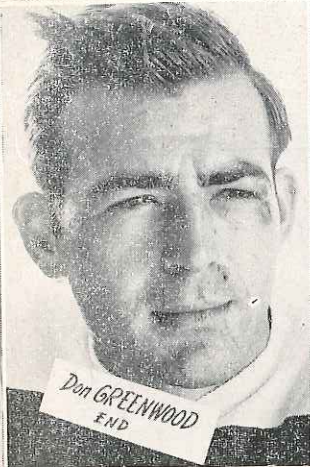
Warren Wood

maneuvers cooked up during the week of CPS's recent open date.

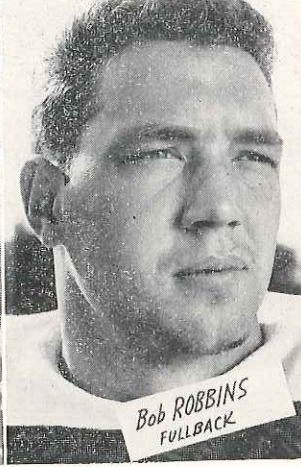
CPS will probably use a modified platoon system, throwing in six or seven substitutions whenever the ball changes hands. Constituting the Sound defensive eleven are Carlson, Lee Demko, Pond, Brown, Martin, Wood, Martineau, Spalding, Light and Kalapus.

Dick Hermsen, Howie Martin (left), Mel Light and Jim Sulenes (right) have their minds set on one thing tonight—hanging on to that totem pole.





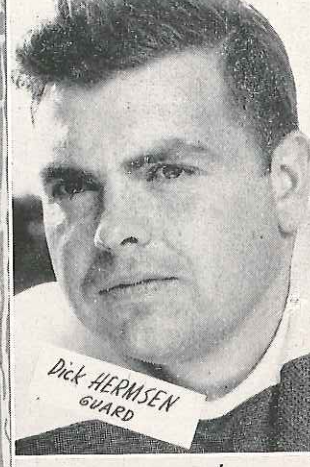
Don GREENWOOD
END



Bob ROBBINS
FULLBACK



Verne MARTINEAU
CENTER



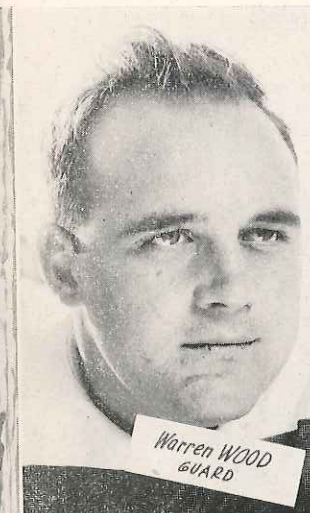
Dick HERMSEN
GUARD

Watch out for these Loggers. They're Paul Bunyan's in maroon moleskins. They're armed with axes, and they're out to chop down every foe in this neck of the woods. They haven't had much trouble either, except when a pack of Wildcats nipped them in Ellensburg. All the tho others have fallen like trees—first the Gladiators, then the Rangers, Savages, Pirates, Bearcats, and Vikings. Tonight the Lumberjacks have their axes poised for two goals—the "Evergreen" trophy and the "Totem Pole." A victory over the Gladiators tonight would be a fitting climax for the dozen graduating seniors, eight of whom are shown on this page.

PUGET SOUND Loggers



Howard MARTIN
QUARTERBACK



Warren WOOD
GUARD



Mel LIGHT
HALFBACK



Burt ROSS
FULLBACK



Jim SEELEN
QUARTERBACK



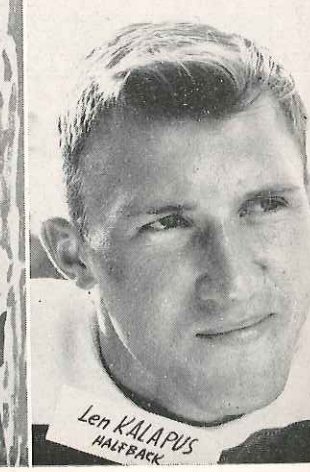
Hank POND
TACKLE



Ed MOTLEY
CENTER



Dick BROWN
END



Len KALAPUS
HALFBACK

Caraway & Russell

Sales and Service

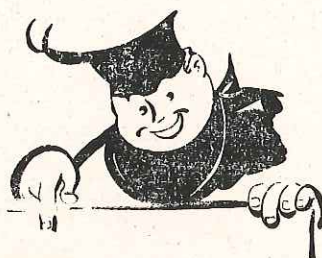
RADIOS
TELEVISION

759 So. 38th GA. 3190

Bryan's Apparel

Nationally advertised clothing
for the entire family

So. 38th & Yakima GA. 2432



STOP . . .

for an after-the-game snack while
browsing through 38th Street on the
way home from this evening's tilt.

38th Street Grill

OPEN TIL 12

3801 So. Yakima GA. 9825

LINCOLN HARDWARE

WE DELIVER

38th & So. "G" GA. 1425

McKinnon's Department Store

Dry Goods -- Furniture -- Paints
Hardware -- Plumbing
Electrical Supplies

3639 So. "G" St. GA. 1331

LINCOLN FURNITURE



*Quality Home
Furnishings*

FRIENDLY SERVICE



3730 So. "G" HI. 1311

THE MERCHANTS OF

38th Street Lincoln District

ARE HAPPY TO HAVE BEEN
ABLE TO SERVE AS YOUR
HOSTS DURING THE 1949
FOOTBALL SEASON.

Come Back Often

SHOP IN THIS THRIVING
CENTER



*Bowl After The
Bowl Game*

38TH STREET'S
FAVORITE RECREATION

39th and So. Yakima GA. 2322

Nicolai & Failor Pharmacy

764 So. 38th. GA. 4590

Mrs. Frisbie's BAKERY

For Good Bakery
Products

710 So. 38th. GA. 7591



F. A. Glassy

WE ARE
EQUIPPED
TO HANDLE
LARGE JOBS

GOOD LUCK TO THE
FOOTBALL PLAYERS
from Dolena Forsten, secretary

GLASSY ELECTRIC CO.

215 So. 38th. HA. 2462

MEATS -- GROCERIES
STOP-N-SHOP

FOR THE FINEST!

702 South 38th Street

Preston-Strobel & Co.

REALTORS

Fire and Casualty
Insurance

3810 So. Yakima Ave. GA. 7719

WELCOME TO THE LINCOLN BOWL—COME BACK OFTEN



Logger Leaders . . .

One year and two months ago, it was against PLC that John Heinrick fielded his first college football team. That game ended in a 6-6 deadlock. But in the game that counted, the Totem Bowl game in November, his charges looped the Lutes 13-7, and took over not only the totem pole but the Evergreen championship in the first year the Irishman was head coach.

Tonight's situation seems to be a carbon copy of last year. Again the totem pole and Evergreen pole are within Puget Sound's grasp if it can only get past the

Tommer-vikings. He began his coaching career at St. Leo High in Tacoma, then moved up to Bellarmine, and finally to Stadium, where he stayed for 12 glorious years.

Surrounding Heinrick on the Logger coaching staff are a pair of capable assistants—Rod Giske, former WSC grid great, and Jim Mahnke. Harry Bird, jayvee skipper, is the head mentor's chief scout.

A COMPLETE DRY CLEANING PLANT

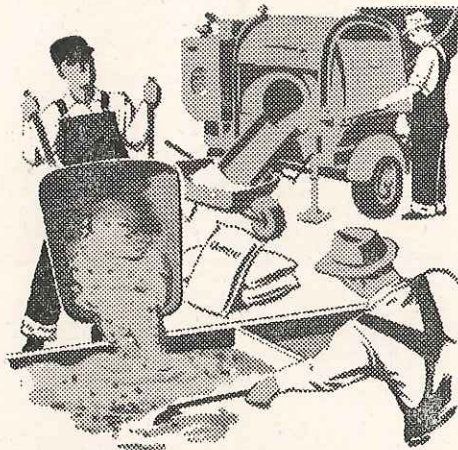
Brown Cleaners

"WE CALL AND DELIVER"

BR. 1326

O. B. BROWN
EDNA BROWN

936 Commerce St.
Tacoma, Wash.



CEMENT—our specialty

. . . whether it is for the foundation of a new home, a garage floor, a new sidewalk or a complete and modern concrete building, you can count on us for a long-lasting job compounded of the finest materials, mixed in modern equipment and poured by experts. No job is too big or too small. For free estimates, phone GA. 3361.

HOLROYD COMPANY

5047 SOUTH WASHINGTON



"The coach gave him a twenty minute furlough!"

Lute Staff

Before the war, mention of the Tommervik and Harshman combination resulted in terror in the CPS camp. Today, as coaches of the Gladiators, the Marvs are still causing the Loggers to lose much sleep.

In their third year at the coaching helm of PLC are MARV TOMMERVIK and his first lieutenant, MARV HARSHMAN, who are also co-directors of athletics. Their careers have paralleled ever since their alma mater days at the Parkland institution, where their cavorting in the Gladiator backfield made national headlines.

The Tommygun hit Little All-American in 1940 and '41. Harsh was on the New York Sun's All-American in '41 and was the leading collegiate scorer on the West Coast for three seasons. In 1945, playing for San Diego Navy, Tommy pitched two touchdowns and ran for three against University of Southern California. After the war both of the Marvs came back to create more thrills for Tacoma partisans while spearheading the professional Tacoma Indians.

Only member of the coaching staff who isn't a PLC grad is LEO GAUM, standing next to Tommervik. Gaum entered PLC as a soph last summer and is majoring in education. He played left half for Central in '38 and for CPS in '40.

Working with the line is ELMER "PETE" PETERSON, one of the greatest guards the Luthers ever had. He played two seasons before the war and two afterwards. In '41 and '46 Pete was selected all-conference.

PORTER-CUMMINGS CO.

SUITS, TOPCOATS & FURNISHINGS

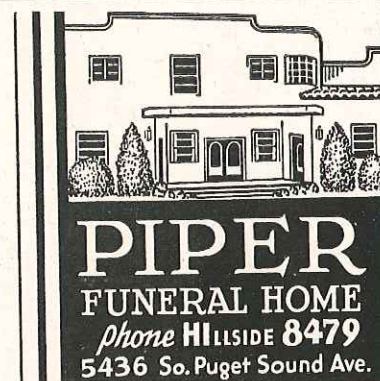
Headquarters for the Students

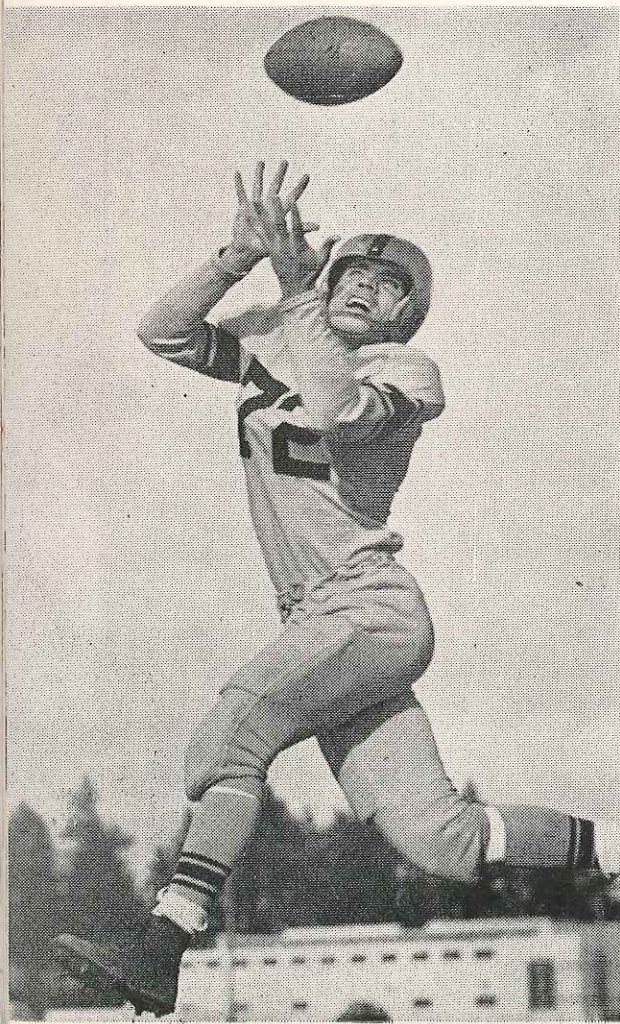
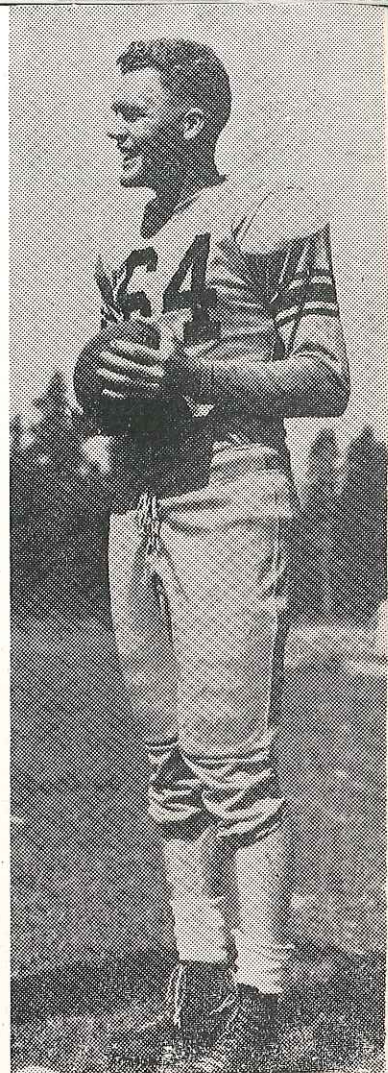
936 PACIFIC AVENUE

"Sports Shop"

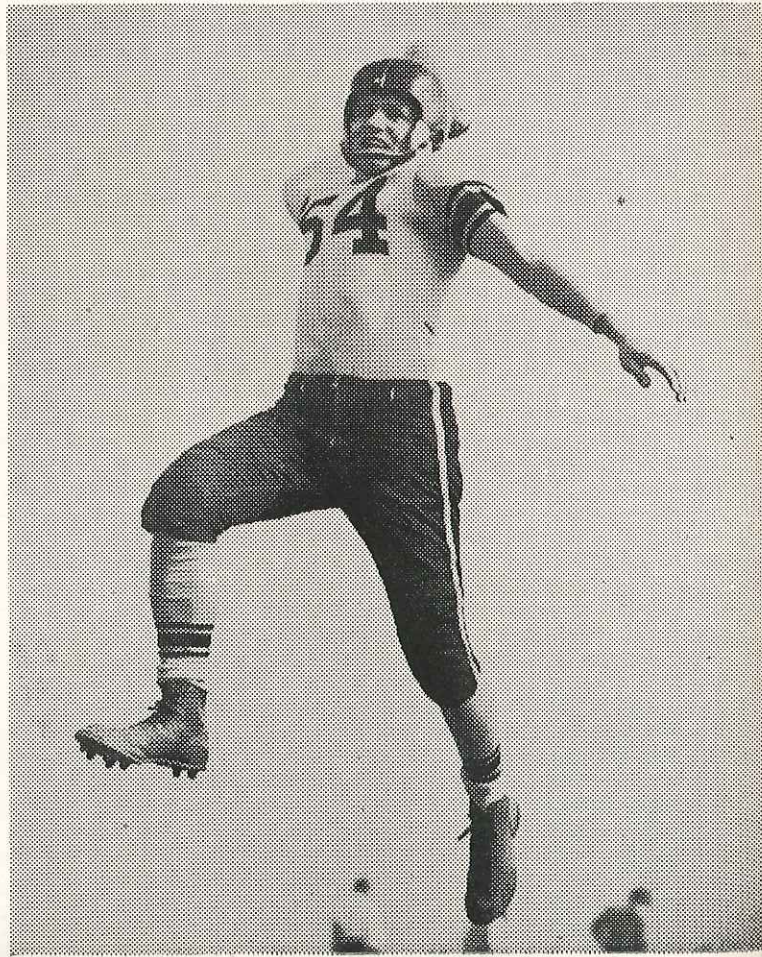
Everything . . .

for every sport!





(Above) — Captain JACK GUYOT makes like he is leaping into a feather bed, while teammate STEINAR GORUD, who played with Guyot three years at Ballard before coming to P.C., smiles. (Below) — BLAINE MCKANNA reaches high for a GENE STRANDNESS aerial.



La Crosse PRINTING COMPANY

(Formerly Beard Printing Co.)

GRanite 7100

CORNER PARK AVENUE AND WHEELER STREET

PARKLAND, WASHINGTON

Good Printing

at

Reasonable

Prices



CASWELL OPTOMETRISTS

M. S. MacDONALD, O. D.

W. A. WAGNER, O. D.

MAin 4748

Ninth at St. Helens Ave.

Tacoma 2, Wash.

HIGH SCORE FOR FLAVOR



WOOD COFFEE CO., INC.

TACOMA



- Storage Tanks
- Sheet Metal Work
- Steel Service Stations
- Steel Fabrication

ACE

FURNACE & STEEL CO.

3740 South Union
Tacoma
Phone GARland 4444

Compliments of
"AL" DAVIES, Owner

GUNDERSON

Original Jewelry

764 BROADWAY

*The Store of Customized
Service . . .*

CARPETS — DRAPERIES
LINOLEUMS — APPLIANCES
SHADES — VENETIAN BLINDS

Selden's
First in Floor Coverings

1141 BROADWAY

A Public Institution

The wages and taxes paid by this company can be counted on to share the costs of our schools and other civic facilities for a long time to come.

We expect to use our lands over and over again for successive crops

—WE ARE IN THIS COMMUNITY TO STAY.

St. Paul & Tacoma Lumber Co.

"More to Offer the Prospective Buyer"

733 East 11th Street

MAin 6181

Pochel Distributing Co.

GRanite 8624



STOVE and DIESEL
OIL

Westinghouse and Frigidaire
Appliances

Duo-Therm Oil Heaters

140TH AND PACIFIC AVENUE



Good Grooming Is Easy . . .

IT'S FAST AND BUDGET-WISE TOO — TO
KEEP YOUR CLOTHES IN CLEAN, WELL-
GROOMED ORDER.

Call GR. 6301

Call and Delivery Service

PARKLAND CLEANERS

Between Sales and Airport on the Mountain Highway

TOPS

in

Refreshment

SQUIRT · NU-GRAPE

TWANG ROOT BEER

DOUBLE COLA

MISSION ORANGE

Bottled and Distributed by

Cammarano Bros.

TACOMA

A Public Institution

The wages and taxes paid by this company can be counted on to share the costs of our schools and other civic facilities for a long time to come.

We expect to use our lands over and over again for successive crops

—WE ARE IN THIS COMMUNITY TO STAY.

St. Paul & Tacoma Lumber Co.

"More to Offer the Prospective Buyer"

733 East 11th Street

MAin 6181

Pochel Distributing Co.

GRanite 8624



STOVE and DIESEL
OIL

Westinghouse and Frigidaire
Appliances

Duo-Therm Oil Heaters

140TH AND PACIFIC AVENUE



Good Grooming Is Easy . . .

IT'S FAST AND BUDGET-WISE TOO — TO
KEEP YOUR CLOTHES IN CLEAN, WELL-
GROOMED ORDER.

Call GR. 6301

Call and Delivery Service

PARKLAND CLEANERS

Between Sales and Airport on the Mountain Highway

TOPS

in

Refreshment

SQUIRT · NU-GRAPE

TWANG ROOT BEER

DOUBLE COLA

MISSION ORANGE

Bottled and Distributed by

Cammarano Bros.

TACOMA