



Building On Success.
Setting a Course for the Future.

AGENDA

- Welcome
- FWAHA Overview
- 2017-2018 Season Review
- 2018-2019 Season Forecast
- Q&A

FWAHA

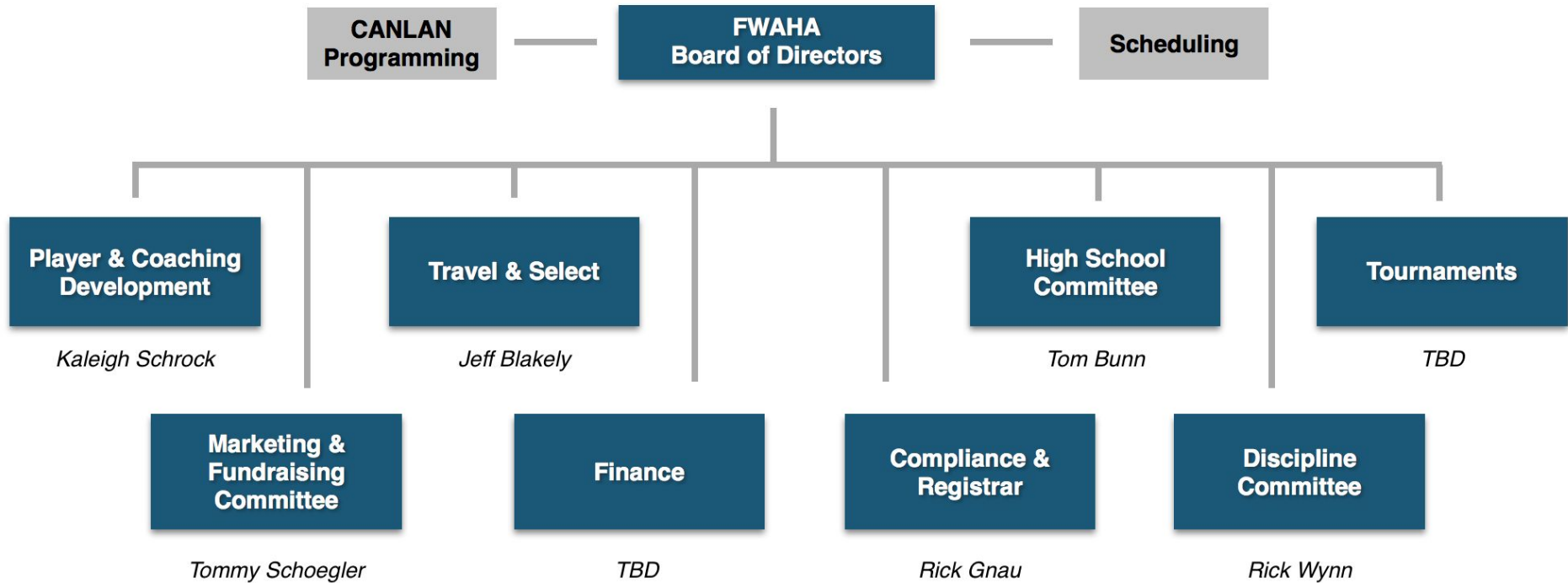
MISSION

- We commit to providing all local hockey players, families and coaches with a premier development experience.

VISION

- To develop the whole athlete and allow players to showcase their skills at all levels of competitive hockey.

FWAHA | Org Structure

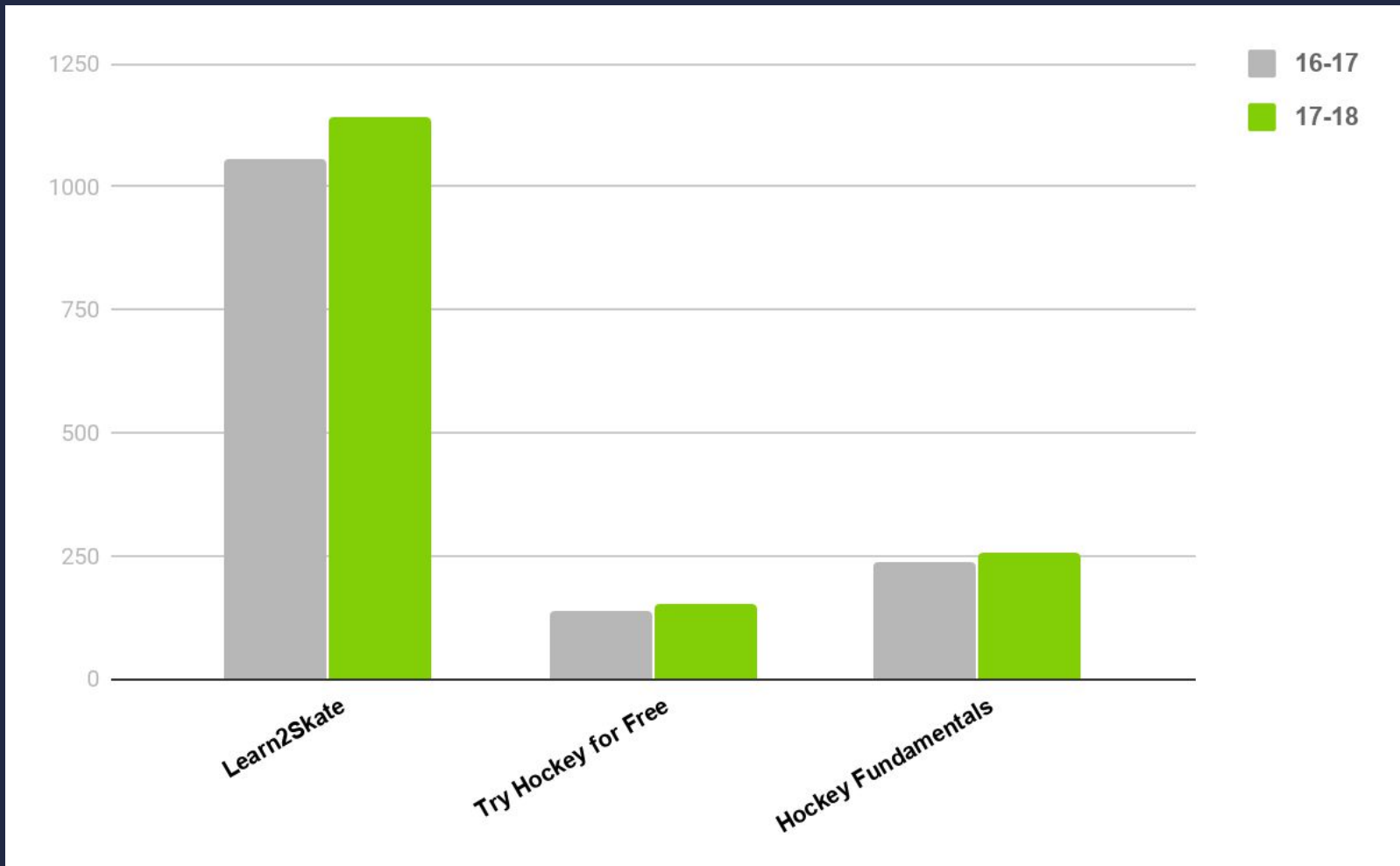


FWAHA | Teams & Training



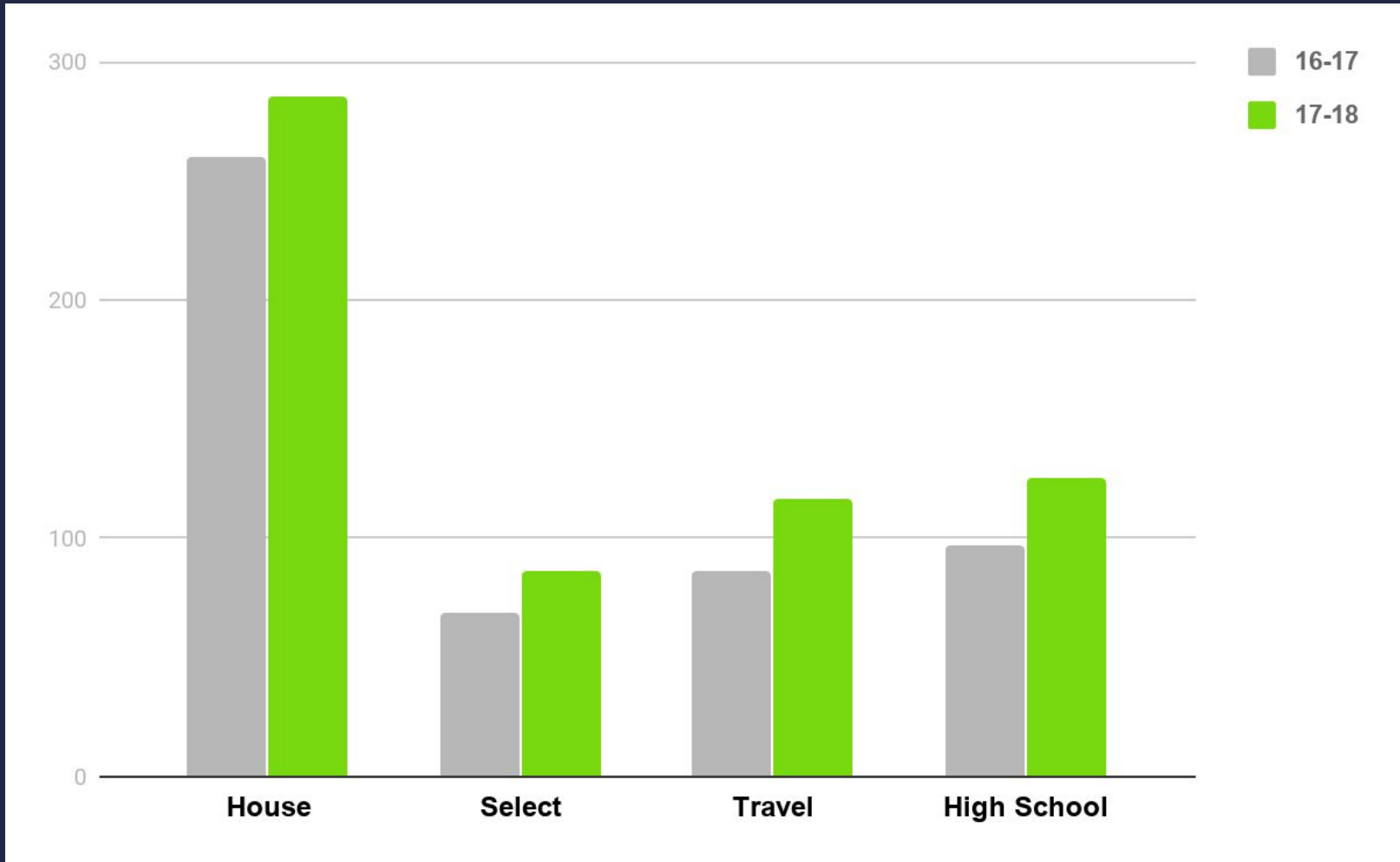
FWAHA | Success

GROWTH | Training Participants



FWAHA | Success

GROWTH | Team Participants



FWAHA | Success

ORGANIZATION & PLAYER DEVELOPMENT

- Strong Partnerships - Canlan, Komets & PSM
- Great Fans at High School Hockey Games
- 1st High School Hockey Media Day
- 1st High Performance Weekend
- Improved Coordination of Scheduling for Teams
- FWAHA, Player, & Team Fundraising Plan
- New FREE Skill Sessions for all Players
- PSM Certified Athletic Trainer at Icehouse
 - Weekly + Tournaments

FWAHA | Success

FUNDRAISING

- First-Time FWAHA Sponsors:
 - Parkview Sports Medicine
 - Glenbrook Automotive
 - Tim Hortons
 - Lazer X
- \$73,787 thru Player and Team Sponsorships
 - 33% increase in sponsorships over 16-17
- “RallyMe” and “RallyMe Roster” Pages Launched

FWAHA | Success

CHAMPIONS

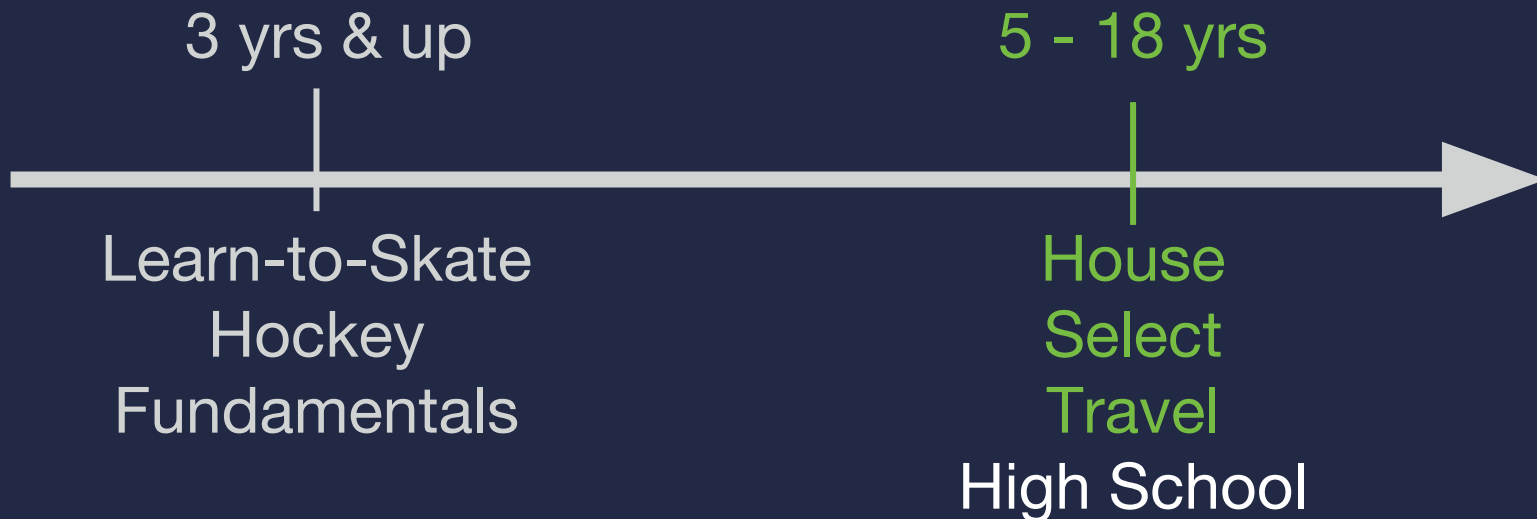
- Began “Champions of Character” Awards
- Began Online “Trophy Case”
- NA3HL Draft First Round, 21st Pick Overall:
Tyler Fox, PSM Force 18U Captain
- 9 Travel and Select teams won a combined
18 Tournament and League Championships
 - Bantam International Silver Stick
Tournament Champion: PSM Force 14U
Select Blue

FWAHA | Success

CHAMPIONS

- Memorial Cup Champion: Bishop Dwenger Saints
- 1A State Champions: Summit City Panthers
 - 2A State Runners Up: Leo Lions
 - 1A State Runners Up: Homestead Spartans

FWAHA | PSM Force

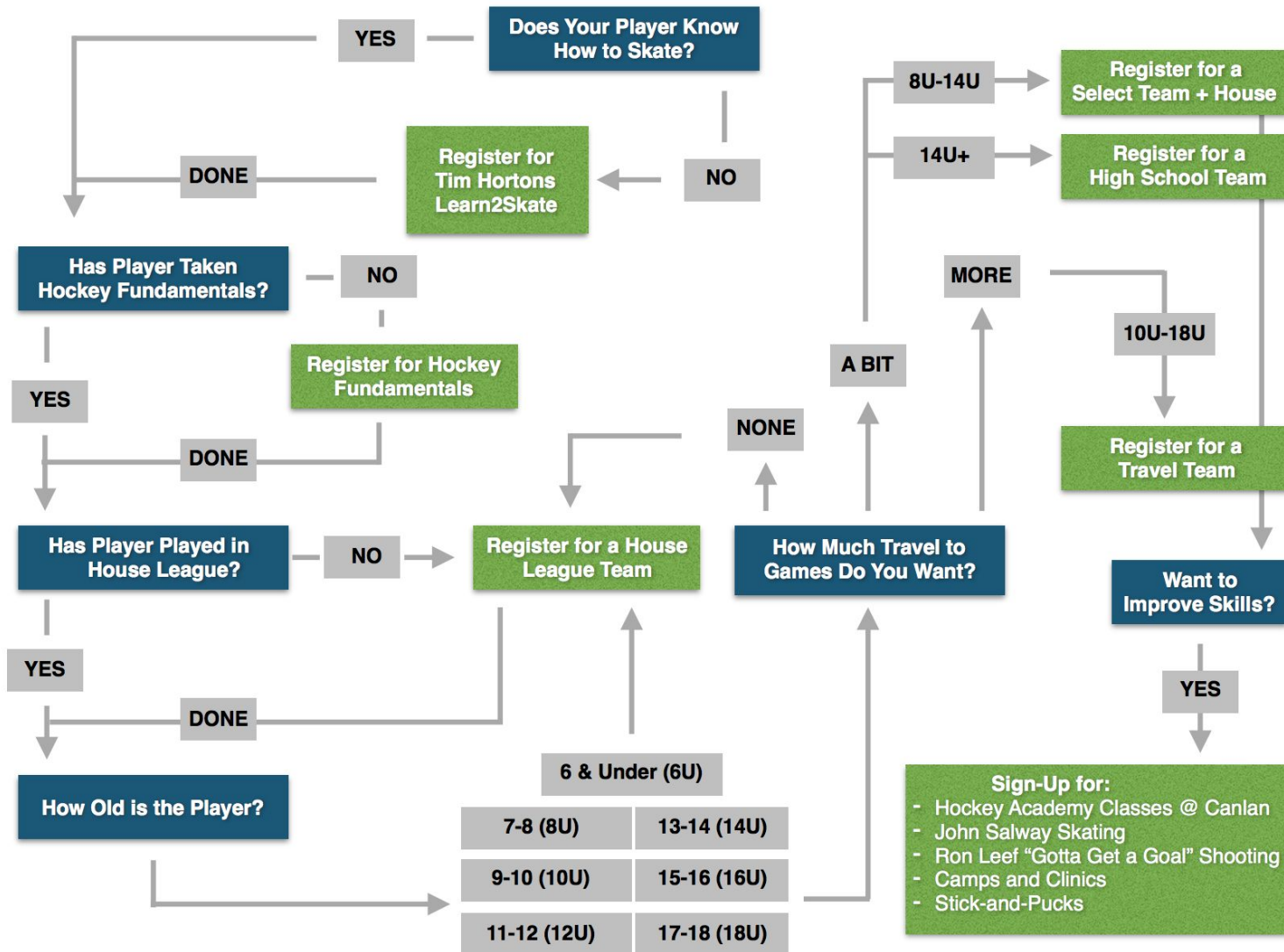




FWAHA | PSM Benefits

- \$10,000 (400 hours) in care provided by PSM Athletic Trainer to FWAHA at no cost
- Baseline Concussion Testing at a reduced fee
- Performance Training at PSM club rate
- Parkview resources inside Fieldhouse
 - PSM Ortho Express Clinic
 - Parkview Athletic Rehab
 - Parkview Athletic Rehab Nutrition Education
- Coordinated Care across ONE Doctors - Performance - PAR - Nutrition

Player Development Path



18-19 Season | FAQs

- Programs Offered
- Cost
- Season Length
- Travel - Where and How Much
- Tryouts
- Coach Selection
- Play-Ups
- Travel + High School
- Birth Year Teams

18-19 Season | Structure

- Building on Success and Structure of 17-18 Season
- Improving Format and Training of Skill Sessions
- Additional Attention to USA Hockey and ADM Standards of Development
- Increased Collaboration between High School, U16 and U18 teams

18-19 Season | Division Details



18-19 House Division

- *Led by Canlan*
- **Skill Level** | Recreation and Development
- **Cost** | \$778 max total (based on age; 2 sessions total)
- **Practices** | 24; 1/week; Fridays
- **Games** | 24; 1/week; Saturdays
- **Travel** | None

18-19 House | Tryouts



Fall Tryouts



Winter Tryouts

18-19 Season | Division Details



SELECT



18-19 Select Division

- Mixed Birth Year Teams
- **Skill Level** | House + Development
- **Cost** | \$800-1,200 (8U-14U) +HOUSE
- **Practices** | 1/week; day varies by team +HOUSE
- **Games** | 25 (Tournaments) +HOUSE
- **Travel** | Limited; travel expense not included

18-19 Select | Tryouts



Call-Outs



Tryouts

18-19 Season | Division Details



18-19 Travel Division

- Birth Year Teams
- **Skill Level** | High Development, Competition
- **Cost** |
 - \$2,000-\$2,400 for 10U-14U teams
 - \$1,600 for 16U (limited schedule)
 - \$3,500 for 18U (estimated)
- **Practices** | 2/week; days vary by team
- **Games** | 50+ (League + Tournaments)
- **Travel** | Frequent; travel expense not included

18-19 Travel | Tryouts

TEAM NAME	BIRTH YEAR(S)	TRYOUT 1	TRYOUT 2
PSM Force 18U	2000 & 2001	May 9th @ 7:10 pm	May 10th @ 7:20 pm
PSM Force 16U	2002 & 2003	May 9th @ 6:00 pm	May 10th @ 6:10 pm
PSM Force 14U Major (AA)	2004	May 5th @ 6:00 pm	May 6th @ 2:50 pm
PSM Force 14U Minor (A)	2005	May 5th @ 5:50 pm	May 6th @ 1:40 pm
PSM Force 12U Major (AA)	2006	May 5th @ 4:50 pm	May 6th @ 12:30 pm
PSM Force 12U Minor (A)	2007	May 5th @ 4:40 pm	May 6th @ 11:50 am
PSM Force 10U Major (AA)	2008	May 5th @ 3:40 pm	May 6th @ 11:20 am
PSM Force 10U Minor (A)	2009	May 5th @ 2:30 pm	May 6th @ 10:40 am

18-19 Travel | 16U and 18U

OBJECTIVE

- Send teams to Nationals each year. 16U contingent on fundraising and funding.

OVERVIEW

- Continued, high-level development of 16U players
- Balance combined High School schedule
- 18U
 - Full Travel (50 games)
 - NJP Showcases, Nationals
- 16U
 - Limited Travel (approx. 25 games)
 - LCAHL, Tournaments, Nationals

18-19 Travel | 16U and 18U

Example Schedule

MONDAY	TUESDAY	WEDNESDAY	THURSDAY	FRIDAY	SATURDAY	SUNDAY
HS Practice	16/18 U Practice	HS Games	HS Practice		Team Indiana	Team Indiana
HS Practice	16/18 U Practice	HS Games	16/18 U Practice, HS Skills	<i>16/18U Games (tournament)</i>	<i>16/18U Games</i>	<i>16/18U Games</i>
HS Practice	16/18 U Practice	HS Games	HS Practice		HS Crossover Games	HS Crossover Games
HS Practice	16/18 U Practice	HS Games	16/18 U Practice, HS Skills		<i>16/18U Games</i>	<i>16/18U Games</i>

18-19 Season | Division Details



HIGH

SCHOOL

18-19 High School Division

- 6 Teams; City and State Championships
- **Skill Level** | High School Athletics
- **Cost** | \$2,220 approximate (varies by team and number of players)
- **Practices** | 1/week; day varies by team
- **Skills** | 1/week; day varies by team
- **Games** | 1/week; Wednesdays
- **Travel** | Limited

18-19 High School | Tryouts

TEAM NAME	HIGH SCHOOL	TRYOUT 1	TRYOUT 2
Bishop Dwenger Saints	Bishop Dwenger H.S.	May 17th @ 5:50 pm	May 23rd @ 6:50 pm
Carroll Chargers	Carroll H.S.	May 17th @ 8:10 pm	May 23rd @ 8:00 pm
Fort Wayne Bruins	Northrop H.S.	May 16th @ 8:00 pm	May 24th @ 8:10 pm
Homestead Spartans	Homestead H.S.	May 16th @ 5:40 pm	May 24th @ 5:50 pm
Leo Lions	Leo H.S.	May 17th @ 7:00 pm	May 23rd @ 5:40 pm
Summit City Panthers	Snider H.S.	May 16th @ 6:50 pm	May 24th @ 7:00 pm
OPEN DRAFT	Any Not Listed	May 30th @ 5:40 pm	May 31st @ 7:30 pm

USA Hockey SafeSport





COURAGE

WE HAVE COURAGE ON AND OFF THE ICE



PERSEVERANCE

WE PLACE DETERMINATION AND TENACITY BEFORE TALENT



ACCEPTANCE

WE WELCOME ALL WHO SHARE THE LOVE OF THE GAME



HUMILITY

WE ARE HUMBLE IN VICTORY

DECLARATION OF PRINCIPLES



Hockey participation offers families value beyond making an individual a better player or even a better athlete. The game of hockey is a powerful platform for participants to build **character**, foster **positive values** and develop important **life skills**. These benefits are available to all players, desirable to every family and transcend the game.

WE BELIEVE:

- Hockey should be an enjoyable family experience; all stakeholders – organizations, players, parents, siblings, coaches, referees, volunteers and rink operators – play a role in this effort.
- Hockey's greatest value is the role it plays in the development of character and life skills.
- All hockey organizations – regardless of size or level of competition – bring value to players and families in their ability to deliver a positive family experience.
- Physical activity is important for a healthy body, mind and spirit.
- There are significant benefits of youth participation in multiple sports.
- Hockey programs should be age-appropriate for all players, accounting for each individual's physical, emotional and cognitive development.
- There is great value in all forms of hockey, both on and off the ice.
- All hockey programs should provide a safe, positive and inclusive environment for players and families regardless of race, color, religion, national origin, gender, age, disability, sexual orientation and socioeconomic status. Simply put, hockey is for everyone.

We believe in our ability to improve lives and strengthen communities globally through hockey. We believe that living by these Principles will provide a healthy, balanced and enjoyable experience for all and inspire impactful service beyond the rink.



ThisIsHockey.org | [#ThisIsHockey](https://twitter.com/ThisIsHockey)



RESPECT

WE RESPECT EVERYONE WE ENCOUNTER IN AND AROUND THE GAME OF HOCKEY



TEAMWORK

WE ARE BETTER WHEN WE WORK TOGETHER



INTEGRITY

WE DO THE RIGHT THING, NOT THE EASY THING



PASSION

WE PLAY A GAME THAT IS ENJOYED BY THE WHOLE FAMILY

Parents + Culture

DECLARATION OF
PRINCIPLES

Take the Pledge

I am a...*

Player

I believe in hockey.

I believe it strengthens character, fosters positive values and develops important life skills -- all of which transcend the game.

I believe in hockey culture, and the power of the people involved in the game. I believe hockey is at its best when it is an enjoyable family experience, and I believe I have a role to play in this effort.

I pledge to be a positive influence on my family, friends and my entire hockey community.

What is your email address?*

EVENTS



FORT WAYNE HOCKEY **ACADEMY**

FEATURING MINNESOTA WILD
COACH BRUCE BOUDREAU

June 15-17, 2018

SportONE/Parkview Icehouse

REGISTRATION OPEN



www.FWAHA.org/Academy

EVENTS



COACHES CLINIC

SATURDAY, JUNE 16 - 8:00 - 11:00 AM

Speakers Include:

- Bruce Boudreau, Minnesota Wild Head Coach
- Rod Adolff, Edmonton Oilers Scout
- Ben Boudreau, Fort Wayne Komets Assistant Coach
- Others to be announced!

\$45 per Coach includes Registration and Breakfast

Hosted at the SportONE/Parkview Fieldhouse, Entrance 3, adjacent to the Icehouse on Ice Way.

Register at www.FWAHA.org/Academy.

EVENTS



FWAHA BANQUET

Saturday, June 16 - 6:30-9:30 pm

Parkview Mirro Center

21+ Over; Cash Bar

A one-of-a-kind event, you and your guests will experience:

- Culinary creativity by the Parkview Chefs
- Interactive hockey experiences throughout the “three periods” of the event; and
- Opportunity to bid on bucket list auction items.

Ticket Packages:

\$75 for Individual Banquet Ticket

\$125 for Two Banquet Tickets

\$500 for Banquet Table of Eight (8)

Upgrade your experience! Purchase tickets to the VIP Meet-and-Greet with Minnesota Wild Coach, Bruce Boudreau!

All proceeds support the mission of the FWAHA.

EVENTS



High Performance Weekend

August 2018

Ages | 10U-18U

Content | On-ice Skill Session

Off-ice Performance Workout

Lunch

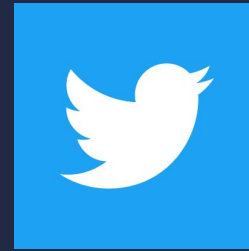
Team Building

Scrimmage

Cost | \$ 50 /player

CONNECT WITH US

FWAHA.org



FWAmateurHockeyAssociation

FWAmateurHockey

#FWAHA
#PSMForce