



2022 NWBA ANNUAL ASSEMBLY

March 31, 2022



**NATIONAL
WHEELCHAIR
BASKETBALL
ASSOCIATION**

ROLL WITH U.S.



NWBA Annual Assembly Agenda

Opening Remarks

Welcome to Delegates and Members
Election Logistics

Nationals Update

Brandon McBeain, Director Membership Services and Programs

Financial Update

Mike Godsey, Treasurer

NWBA Eligibility and Classification Process

Jayne Chilutti

Election

Delegates to Vote for President
Delegates to Vote on Proposed Amendments

State of the NWBA

Tim Fox, President

Management Report

Will Waller, CEO



Nationals Update

Brandon McBeain; Director, Membership Services and Programs



**NATIONAL
WHEELCHAIR
BASKETBALL
ASSOCIATION**

ROLL WITH U.S.



Congrats to Intercollegiate Division National Champions

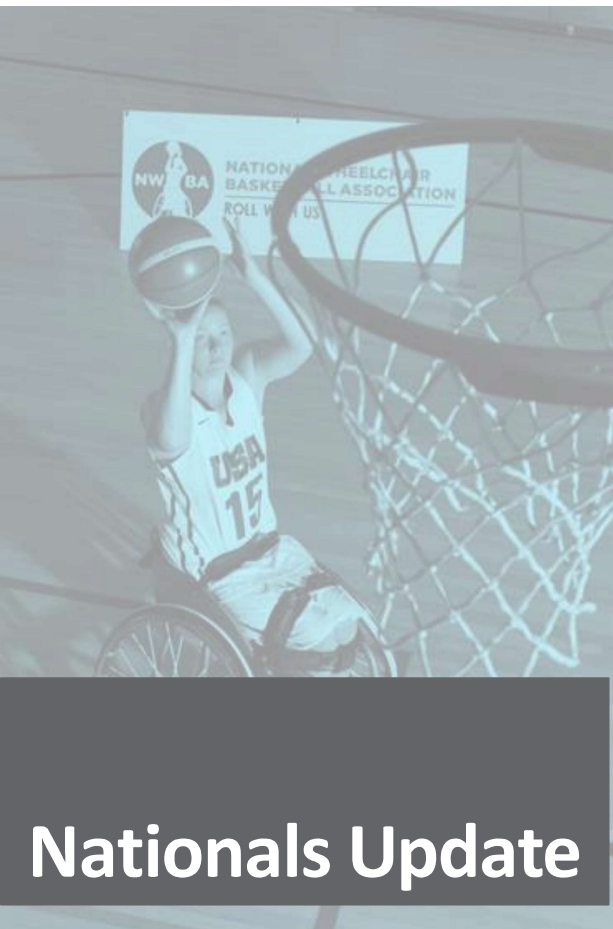


National Champs Women's Division
University of Alabama



National Champs Men's Division
UTM Movin' Mavericks





PRESENTED BY ABC MEDICAL

Day 1 Updates

- Adult Division I, II & III Pool Play

Tournament Figures:

Adult Athletes ~431

Junior Athletes ~506

Non-Athletes ~232

- Games – 177 games
- Officials – 30
- Classifiers – 11
- National Championships – 5



Remaining Adult & Junior Special Events

2022 NWBA THREE-POINT SHOOTING COMPETITION

PRESENTED BY



FREE TO PARTICIPATE

+\$2,000 IN PRIZES FOR TOP FINISHERS

QUALIFY AT THE DR. DISH BOOTH
- ON COURT 4 AT WICHITA HOOPS

FINALS ON APRIL 1
- ON COURT 5 AT WICHITA HOOPS





Additional Special Events

2022 INDUCTION

NWBA Hall of Fame
April 1, 2022

TIME: 6-9 PM CT

VENUE: WICHITA MARRIOTT KANSAS GRAND BALLROOM

LIVESTREAM: NWBA HALL OF FAME FACEBOOK PAGE

You are cordially invited to join the NWBA Hall of Fame Induction Ceremony of Paul Shulte & Sarah Castle, and the induction presentations of Bill Greene & Jeff Glasbrenner.

6:00-6:45 PM Red Carpet Interviews by Matt Scott,
2x Paralympic Gold Medalist

7:00 Speech by Will Waller, CEO of the NWBA

7:05 WELCOME by David Kiley, Chairman of the
NWBA Hall of Fame Committee
7:15 In Memoriam

7:20 Bill Greene, Class of 2020 Presentation

7:35 Jeff Glasbrenner, Class of 2020 Presentation

7:50 Sarah Castle, Induction to Hall of Fame, Class of 2022

8:05 Paul Schulte, Induction to Hall of Fame, Class of 2022

8:20 Frank T. Burns Tribute

8:45 Closing Remarks



DETAILS ANNOUNCED FOR

2022 NWBA JUNIOR DIVISION BANQUET

PRESENTED BY



7PM ON SATURDAY, APRIL 2 AT WICHITA MARRIOTT



Thank you to all the hosts and contributors for the national tournaments - including Visit Wichita and UTA for the hospitality!



Nationals Update



2022 NWBA Toyota Women's Wheelchair Basketball National Championships

Schedule: (all times Central)

- Games to start at 8am on Friday, April 22
- Championship Game is 10am on Sunday, April 24

Venue

- University of Akron Student Recreation and Wellness Center
 - 382 Carroll St, Akron, OH 44304
- Hosted the 2019 Buckeye PVA Cup presented by Invacare
- Three courts; two for competition, one for chair storage / vendor space
- Free parking



**Nationals Update
– Women's**



Financial Report

Mike Godsey, Treasurer



**NATIONAL
WHEELCHAIR
BASKETBALL
ASSOCIATION**

ROLL WITH U.S.



Financial Report: The What

National Wheelchair Basketball Association Historical Profit and Loss

	2021	2020	2019	2018	2017
INCOME	\$1,061,387	\$634,541	\$1,037,162	\$840,047	\$821,210
EXPENSES	\$1,055,178	\$719,365	\$891,768	\$1,015,076	\$1,125,257
NET INCOME	\$6,209	(\$84,824)	\$145,394	(\$175,029)	(\$304,047)

Note: 2020 results included a massive decrease in USOPC funding \$281,952 as well as membership revenue of \$120,357. USOPC funding included an additional \$36k in COVID Specific funding.

While membership revenue and corporate revenue have mostly rebounded to pre-Covid numbers, it is important to realize that expenses have grown through inflation higher than pre Covid numbers.

Includes Revenue of \$45,572 and \$39,300 in 2021 and 2020 in PPP loans which have both been foregiven.



Financial Report: 2021 - Highlights

- Continued new culture of oversight and accountability
- Continued use of bookkeeping company- Altruic Advisors (USOPC Funded)
- We still utilize Bill.com and Gusto for payroll to provide separation of controls, efficient processing, and accountability.
- Audit Field work completion date (representation of our preparedness). Due date is May 15th
 - 2021-March 28, 2022
 - 2020-February 26, 2021
 - 2019-March 25, 2020
 - 2018-November 15, 2019 (this was the longest deadline possible)



Financial Report: 2022 Budget Highlights

- Return of Team/Individual membership revenue to 2019 amounts
- Increase in Net Income of \$75,000
- We had to borrow on our working capital line by \$100,000 of its \$150,000 capacity. This wholly a result of the pandemic. Losing \$84,000 in 2020 didn't create a cash crunch until the summer of 2021.
- With our Peer-to-peer fundraising model we've added a stock donation option. This allows another avenue for your circles of influence to maximize tax advantages while supporting your local program.
- Creation of Revenue & Grant Writing Task Force



**NATIONAL
WHEELCHAIR
BASKETBALL
ASSOCIATION**

Recommendations for NWBA Eligibility and Classification Process

NWBA ANNUAL MEETING
MARCH 2022

NWBA Classification Eligibility and Classification

- NWBA currently Policy and Procedures is to follow IWBF Eligibility and Classification Guide
- IWBF had to make changes to its Eligibility and Process to be in compliance with IPC
- IWBF has new criteria and process for classification
- NWBA developed Ad Hoc Committee to review and make recommendations to BOD regarding following IWBF new criteria and process

NWBA Ad Hoc Committee members

Division 1:

Randy Jaramillo

Division 2:

Willie Jackson

Division 3:

Keith Newerla
Forrest Lodge

Junior:

Diane Winterstein
Eric Rode
Preston Howell

College:

Doug Garner
Jeremy Lade

Women:

Christina Schwabb
Desiree Miller

Athlete Advisory:

Harsh Thaker
Eve Hampton

High Performance:

Mary Vacala
Steve Serio
Courtney Ryan

Classification Committee

Gretchen Baker
Toni Tyner

NWBA:

Brandon McBeain
Jen Ruddell
Jayne Chilutti

NWBA Ad Hoc Committee

- Committee was formed 2020-21 season in response to pending changes and athletes being deemed ineligible. Purpose was to solicit feedback from each Division, HP, and Classifiers on IWBF/IPC minimal disability changes.
 - Committee recommendation made to and approved by BOD was to wait for final IWBF criteria and process.
 - Committee recommendation made to and approved by BOD to allow all current NWBA athletes deemed ineligible by IWBF to remain eligible for the season.
 - Later revised to remain eligible for 2021-2022 due to timing of release of IWBF new criteria
- Committee reconvened in August – October, 2021 to review IWBF published criteria (August 2021) and processes, get membership feedback and make recommendation to BOD
- Recommendations made to and approved by BOD and to be presented at Annual Meeting

IWBF Classification

- IWBF must comply with IPC Classification Code to participate in IPC events
- IWBF Classification Classes remain the same (1.0 – 4.5)
- The major changes are to ensure all athletes in IPC events meet IPC Minimal Impairment Criteria (MIC)
- All athletes, **current and new**, will be assessed **medically** to ensure eligibility

IWBF ELIGIBLE IMPAIRMENTS

- IMPAIRED MOTOR POWER
- IMPAIRED PASSIVE RANGE OF MOTION
- LIMB DEFICIENCY/LIMB LOSS
- LEG LENGTH DIFFERENCE
- HYPERTONIA
- ATAXIA
- ATHETOSIS

IWBF Non-Eligible Impairment or Health Conditions

NON-ELIGIBLE IMPAIRMENTS INCLUDE, BUT NOT LIMITED TO:

- PAIN
- IMPAIRED CARDIOVASCULAR FUNCTIONS
- IMPAIRED RESPIRATORY FUNCTIONS
- JOINT INSTABILITY (ie: recurrent dislocation of a joint)
- LOW MUSCLE TONE
- HYPERMOBILITY OF JOINTS

NWBA
Eligible and
Non-Eligible
Impairment or
Health
Conditions

- CONSISTENT WITH IWBF

3 STAGES OF IWBF NEW CLASSIFICATION PROCESS

- STAGE 1 ELIGIBILITY ASSESSMENT
- STAGE 2 EVALUATION
- STAGE 3 FUNCTIONAL OBSERVATION

STAGE 1 Eligibility Assessment

- Stage 1: Eligibility Assessment
 - Each athlete will have a Medical Diagnostic Form completed and submitted to IWBF with supporting medical documentation a minimum of 3 months in advance of competition
 - Medical documentation required is based on the Health Condition (Disability) and the Eligibility Impairment
 - An Eligibility Assessment Panel will review the documentation
 - If documentation meets Minimal Eligibility Criteria (MIC) the player is deemed eligible for classification and can proceed to Stage 2 Evaluation
 - If documentation does not meet minimal eligibility criteria, the player is deemed Non-eligible
 - If decision is Non-eligible the player has the right to submit additional documentation but cannot proceed to Stage 2 until final decision is made.
 - IWBF will determine the time period to submit additional documentation

STAGE 1 Eligibility Assessment

- Stage 1: Eligibility Assessment
- Each Impairment has detailed measurable criteria that must be met to be eligible.
- This is submitted as part of the process before going to a tournament or seeing a classifier.
- Athletes cannot attend a tournament or be seen by classifier until medical eligibility has been determined.
- The tests for each impairment is different but requires a PT, OT or MD to perform the test. There are some that an athletic trainer can perform.
 - Example: Impaired Motor Power requires a Manual Muscle Test
 - Example: Hypertonia requires an Ashworth Test
 - Example: Impaired Passive Range of Motion requires goniometer testing
 - Example: Ataxia requires 3 subtests of the SARA

STAGE 1 Eligibility Assessment Compared to NWBA

- Consideration for Eligibility as part of player registration.
- Players with non obvious disability must apply for eligibility
- All 4.0-4.5 proposed players must apply for eligibility
- Requirement for eligibility is necessary 1 x, when determined eligible athlete remains eligible. This can not be protested by another team/ player.
- Need to supply documentation of permanent LE disability that consistently interferes with function that meet NWBA inclusion criteria. No specific testing required based on health condition.
- Players can play while eligibility is being determined
- Eligibility committee will provide feedback and request additional documentation is needed prior to making a decision. May request objective testing if there is not documentation of LE impairment that meets criteria such as limitation is due to pain or soft tissue/ligamentous.
- If ruled ineligible games played will be forfeited
- Can appeal decision 1x
- There is not a deadline to appeal the decision

STAGE 2 IWBF EVALUATION

- Stage 2 will **validate** the medical documentation submitted in Stage 1.
- This Stage is in several parts:
- Stage 2a uses specific standardized tests based on the Impairment.
 - These are conducted by an IWBF classifier with medical training: PT, OT, MD.
 - Stage 2a is the time the player is assessed to meet specific and detailed criteria for the athlete's eligible impairment.
 - These tests were part of the supporting documentation for Stage 1
- Stage 2b is a functional assessment.
 - Stage 2b the player will perform specific movements while holding the ball to evaluate volume of action.

STAGE 2 EVALUATION Compared to NWBA

- This is like the old Medical System of classification.
- This medical evaluation does not exist in current NWBA process
- Classifiers do not need to be PT, OT or MD
- Classifiers can observe players off court and ask for side court functional skill assessment, but this is the exception not every player is assessed with simulated drills. Side courts usually occur after observation in competition not prior to competition. **This does not substitute for observation in competition.**

INTENTIONAL MISREPRESENTATION

- This is a disciplinary offence for a player to intentionally misrepresent (either by act or omission) their skills and/or abilities and/or the degree or nature of the Eligible Impairment during the Player Evaluation and/or at any other point during or after allocation of a Sport Class.
- This is a disciplinary offence for any Player or Team Support Personnel to assist a player in committing Intentional Misrepresentation or be in any other way involved in any other type of complicity involving Intentional Misrepresentation, including but not limited to covering up Intentional Misrepresentation or disrupting any part of the Player Evaluation Process.

What is a Sport Class and a Sport Class Status

- These are new terms for IWBF and the NWBA but have been used by IPC
- The Sport Class is your numeric classification (1.0, 1.5, 2.0, 2.5, 3.0, 3.5, 4.0, 4.5, J1, J2, J2-4)
- The Sport Class Status will change as you progress through the process and even after you are classified. It basically lets others know the status of your classification.

IWBF Sport Class Status

- **NE: Sport Class Not Eligible**
- **CNC: Classification Not Completed**
- **OA: Observation in competition Assessment**
- **N: New**
- **C: Confirmed**
- **R: Review**
- **RT: Review Transition (end 12/21/22)**
- **CT: Confirmed Transition**
- **FDR: Review with Fixed Date**

NWBA Sport Class Status

- **P: Proposed**
- **A: Approved (seen and approved by 2 Team Reviewers)**
- **C: Confirmed (seen by classification panel)**
- **AB: Able Bodied does not meet eligibility criteria**
- **R: Review requested**

STAGE 3 OBSERVATION

- **This is what we are used to for classification with some changes**
- A panel of a minimum of 2 Internationally certified classifiers will observe the athlete during competition. The other panel member may have Zonal License.
- First Appearance: The new player must have their First Appearance during the preliminary games. A First Appearance CANNOT be after the crossover.
- If a player does not get sufficient playing time or observation during the preliminary games, the Sport Class Status of CNC can be assigned, and the player cannot continue to play in the tournament. The players classification will be completed at the next tournament.
- If your Sport Class changes it is effective at the conclusion of that game NOT the tournament. No Sport Class changes occur during the qualifying games.

NWBA CLASSIFICTION OBSERVATION

- **This is what we are used to for classification**
- A panel of a minimum of 2 certified classifiers will observe the athlete during competition.
- If a player does not get sufficient playing time or observation during the tournament the Sports Class status will not change. It will be documented the player did not have sufficient observation time. The players classification will be completed at the next tournament.
- **If your Sport Class or classification changes it is effective at the conclusion of the tournament.**

IWBF Protest and Appeals



There is a new process for Protests and Appeals of Sport Class or the Classification procedure. There is also new process for Reviews. No protest by another team of players classification

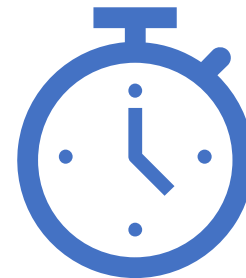


The process is different depending on the situation and timing

NWBA REVIEW AND APPEALS



Athletes have the right to request a Review of the classification decision. Athlete can request 1 Review of a classification.



There is no time frame to request a Review of classification.

COMMITTEE RECOMMENDATIONS

- Recommendation to follow 2014 IWBF Eligibility Criteria and process (NWBA current process and criteria) for Domestic League play
- High Performance and Developmental teams must follow all IWBF processes and eligibility criteria for IWBF sanctioned competitions
- Recommendation to allow current NWBA athletes deemed ineligible in IWBF to remain eligible at current classification in NWBA. Players eligibility cannot be protested. This is considered a “Grandfather Clause”.
- Recommendation new NWBA athletes deemed ineligible by IWBF must apply for eligibility and have decision prior to playing or games forfeited
- Recommendation all 4.0 and 4.5 players must apply for eligibility and have decision prior to playing or games forfeited

COMMITTEE RATIONALE

- Alignment with the IWBF/IPC policies for NWBA High Performance Program is important to have full compliance with fielding athletes eligible to compete in IWBF events.
- The feedback from all divisions is that the new IWBF MIC requirements medical assessment is an additional burden to the membership. The medical assessment would require the athletes to be assessed by a physician or therapist for testing which can be financially difficult as it may not be covered by insurance.
- The limited number of medically trained classifiers able to do testing provides burden to membership and classification panels.
- Desire to remain more inclusive NOT EXCLUSIVE with the MIC Standards when determining player eligibility for NWBA domestic league play.
- Provide proper notice of athlete's eligibility status for the 2022-23 NWBA season.



QUESTIONS?



Elections



**NATIONAL
WHEELCHAIR
BASKETBALL
ASSOCIATION**

ROLL WITH U.S.



2022 NWBA ANNUAL ASSEMBLY - DEADLINES/TIMELINE

Date	Deadline	Action
December 31, 2021 (Friday)	90 Days before Annual Assembly	<ul style="list-style-type: none"> • Notice of Annual Assembly published • Board of Directors open positions published (self-nominations must be submitted 60 days before Annual Assembly) • Bylaws Amendment Proposal Form—must be submitted 60 days before Annual Assembly • Reminder: Teams must be Registered and the respective Team Representative/Voting Delegate must hold a current season verified complete Individual Membership Registration 60 days before Annual Assembly to be eligible to vote
January 30, 2022 (Sunday)	60 Days Before Annual Assembly	<ul style="list-style-type: none"> • Self-nominations for Board of Directors open positions must be submitted to the Governance Committee • Bylaws Amendment Proposal Form must be submitted in writing to the Executive Director and the Chair of the Governance Committee • Teams must be Registered and the respective Team Representative/Voting Delegate must hold a current season verified complete Individual Membership Registration to be eligible to vote
February 14, 2022 (Monday)	45 Days Before Annual Assembly	<ul style="list-style-type: none"> • Board of Directors slate of nominees for open positions Published
March 1, 2022 (Tuesday)	30 Days Before Annual Assembly	<ul style="list-style-type: none"> • Bylaws Amendment Proposals Emailed and Posted • Absentee ballot must be requested in writing to the Executive Director—Email Will • Absentee ballots sent to voting delegates
March 16, 2022 (Wednesday)	15 Days Before Annual Assembly	<ul style="list-style-type: none"> • Absentee ballot must be received by the Governance Committee Chair—Email Dug
March 31 (Thursday) at 8:15 PM CT		Annual Assembly



By now, you have already received your survey monkey link and password to your ballot. For those Delegates in attendance, you have a ballot in front of you.

ELECTION REMINDERS:

- The NWBA Board of Directors has one positions available for election at the 2022 NWBA Annual Assembly.
- Please vote “Yes” for ONLY ONE CANDIDATE listed
- Ballots received with more than one vote will be invalid and not counted.
- The one Candidates with the highest vote total will be elected to a four-year term with the NWBA Board of Directors.
- Each candidate’s resume can be reviewed by visiting: www.nwba.org/annualassembly (click on Board of Directors Elections tab).

**Vote for
Board Directors**



Nominees (in alphabetical order by first name) for NWBA Board of Directors are below

VOTE YES or NO for Each Candidate / VOTE YES for ONLY FIVE Candidates

Candidate 1 **Darlene Hunter**

**Vote for
Board Directors**



Vote for Bylaw Amendments

NWBA Bylaws Amendment Proposals Voting Information

VOTING REMINDERS For Paper Ballots:

- To process your vote for the NWBA Bylaws Amendment Proposals, please place a large “X” clearly in either the “Yes” or “No” box for each Proposal.
- The NWBA Bylaws may be amended by a two-thirds (2/3) majority of the voting membership. (NWBA Bylaws – Article 10, Section 3)
- The full proposal form that was submitted for each of the Proposal Article/Section names listed below can be reviewed by visiting: www.nwba.org/annualassembly (click on Bylaws Amendments tab). Proposals are listed below in no particular order.
- Visit: www.nwba.org/aboutpoliciesprocedures to reference the current NWBA Bylaws.

VOTING REMINDERS For ONLINE:

- Link to electronic voting for virtual participants can be found in GoToMeeting Chatbox



NWBA Bylaws Amendment Proposals ***VOTE YES or NO for Each Proposal***

- Amendments put forth by Membership: Proposals 1 thru 5
- USOPC Compliance and Audit Required Actions: Proposals 6 thru 12
- Legal Consultant Recommendations: Proposals 13 thru 22
- Staff recommendations for consistency, clarity and formatting: Proposals 23 thru 30

**Vote for Bylaw
Amendments**



State of The NWBA

Tim Fox, President



**NATIONAL
WHEELCHAIR
BASKETBALL
ASSOCIATION**

ROLL WITH U.S.



Reflections On 2022

- Increase athlete voice across leadership levels of the organization
- Pride in performance: USA National Teams ... only country to return from Tokyo with 2 medals (Men – Gold, Women, Bronze)
- Gratitude for engaged leadership throughout the organization
- Confidence to grow the sport moving forward
- Need continued engagement by Membership to enhance future growth
- Thank you to Membership for the opportunity to serve

President's Report: Year In Review



NWBA Dues Structure – Originally Announced in 2018

	2018-2019	2019-2020	2020-2021	2021-2022	2022-2023	2023-2024
Adults	\$30	\$40 \$30	\$35 \$30	\$X0 \$30	\$5X \$30	\$50
Juniors	\$25	\$25	\$25	\$25	\$25	\$25
Non-Athletes	\$50	\$50	\$X0 *\$60	\$X0 *\$60	\$5X *\$60	\$50
Teams	\$600	\$600	\$600	\$X00 \$600	\$7X0 \$600	\$700
Sanctions	\$0	\$50 \$25	\$60 \$25	\$X0 \$25	\$7X \$25	\$75

*Incremental \$10 for Non-Athletes is related to price increase of Congressional Legislated Background Check

No NWBA Increase in Membership Fees, however, Athlete Safety increased costs will continue to be passed on. Board will evaluate fee structure annually.



Management Report

Will Waller, CEO



**NATIONAL
WHEELCHAIR
BASKETBALL
ASSOCIATION**

ROLL WITH U.S.

NWBA Leadership - Board of Directors



Tim Fox
President
Elected 2019



Ryan Martin
Vice President-Elected 2021
Elected by BOD 2021



Mike Godsey
Treasurer-Elected 2021
Elected by BOD 2021



Dug Jones
Secretary-Elected 2021
Elected by BOD 2021



Dan Ferreira
Member
Elected 2020



Gale Gaeng
AAC Chair
Elected 2020



Andrea Woodson-Smith
AAC Vice Chair
Elected 2020



Darlene Hunter
Elected 2020
USOPC AAC Rep



Teresa Skinner
Member
Elected 2021



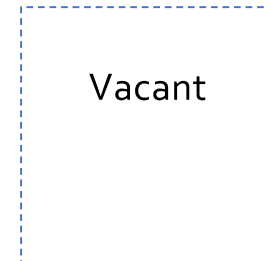
Matt Pierre
Appointed 2021



Michelle Alban
Appointed 2021



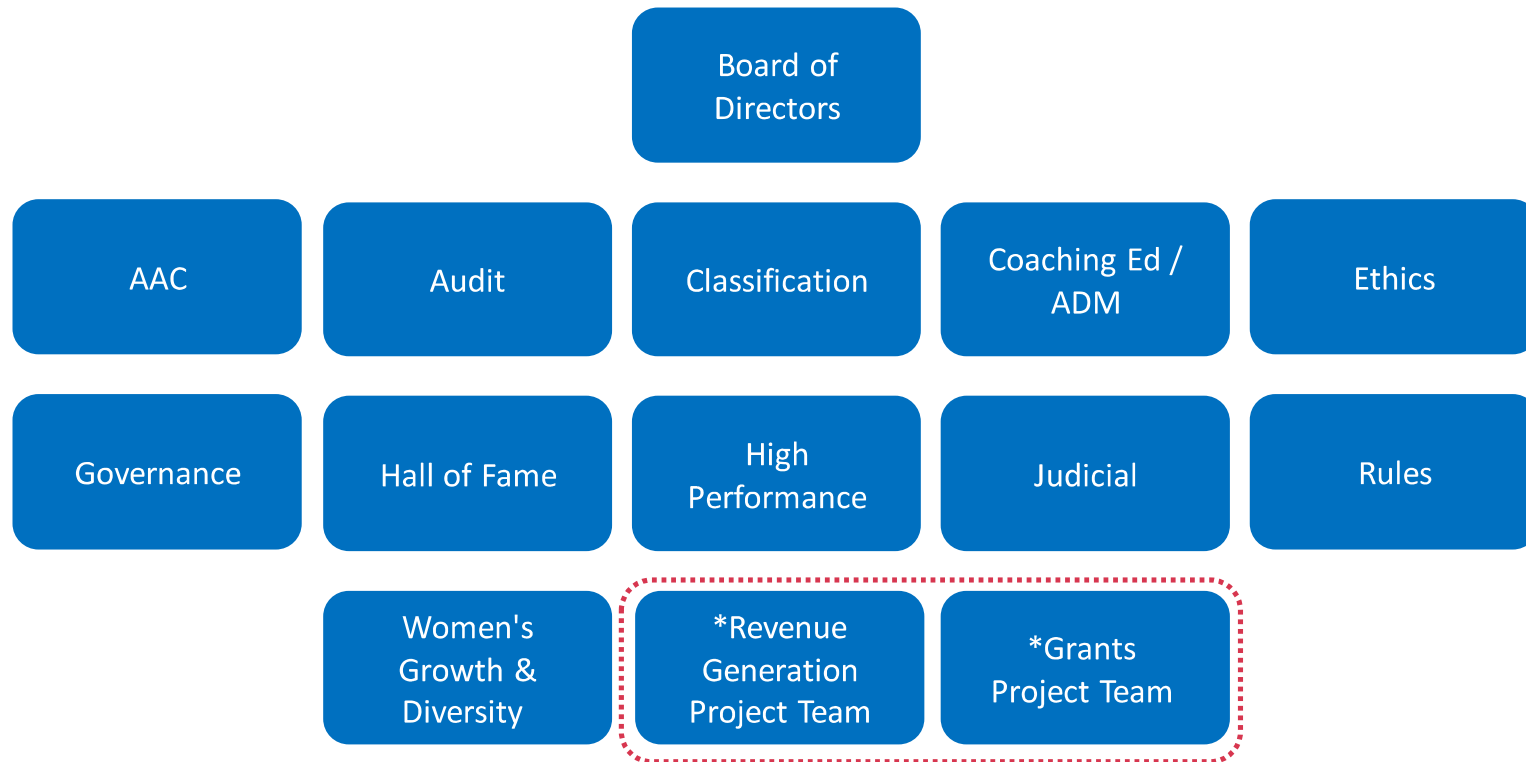
Steven Curtis
Appointed 2021



Vacant
Independent Director



NWBA Leadership - Committees



All Committees Meet 20% Athlete Requirement With Plans To Shift To 33% By 2022

* Project Teams Have Different Standards For Athlete Representation



Diversity, Equity and Inclusion Plan


Objective	Initiative(s)
1. Promote the retention and recruitment of women to participate in the NWBA and sport of wheelchair basketball.	<ul style="list-style-type: none"> - Create the NWBA Women's & Diversity Committee to ensure alignment across all levels of the organization on women's initiatives. - Host opportunities to develop, classify and train women on NWBA High Performance Program. - Promote participation of women across divisions of play.
2. Promote an inclusive environment thru transgender athlete participation within the NWBA and sport of wheelchair basketball.	<ul style="list-style-type: none"> - Create and implement a Transgender Participation Policy that is tailored to wheelchair basketball, membership and levels of play - Host educational opportunities for NWBA membership on the policy and implementation.
3. Create a military division for active and retired military personal to have the ability to compete in wheelchair basketball.	<ul style="list-style-type: none"> - A focused division for teams comprised solely of active and former service men and women - Leveraging the classification system used by Warrior Games, as they have historically governed their competition with inclusion of TBI and PTSD - Inclusion of participants with Traumatic Brain Injury (TBI) and Post Traumatic Stress Disorder (PTSD), and other eligible conditions as found in the Warrior Games Minimum Disability Category (see NWBA Military Division policy for additional details)
4. Increase the number of women involved in leadership roles within the NWBA.	<ul style="list-style-type: none"> - Governance Committee and Board of Directors to be intentional on consideration of women for any and all appointed/assigned/selected roles. - Educate membership on importance of diverse representation within leadership for elected roles



Financials – Return to Play Campaigns

Summary Statistics

- Prior 2 years, we have raised over \$250,000 in peer to peer campaigns
- 90% of funds raised by teams stayed with teams
- 2022 focus will be on 1 campaign date near start of season
- Will reach out to team reps to align on most fitting timeline for campaign



Return To Play Fund

\$159,423.67 of \$200,000.00

80%

[Donate to The NWBA](#)

[Create Your Own Fundraiser Page](#)

Tell your friends & family about this event!

[f](#) [t](#) [p](#) [in](#) [e](#)

Help the NWBA Return To Play!

Like other sports, COVID-19 has created an uncertain future for The National Wheelchair Basketball Association. Our athletes have been unable to train or compete together since March when our sport came to a screeching stop. This is concerning, because the sport improves physical, mental and emotional health for people who play.

In a recent survey, over 80% of NWBA Members stated a desire to return to play (safely). However, over 33% told us that they or an immediate family member have experienced a negative financial impact due to COVID-19. **The NWBA and its Members are no strangers to adversity, but these unprecedented times have brought significant financial risk.**

This Return to Play campaign is designed to help NWBA Teams raise funds to give their athletes a season when it is safe to do so. **Through this campaign, Teams, Members and Friends of the NWBA can create a personalized fundraiser page.** In your own words, you can talk about your love for the game, its impact on you or your goals. **The NWBA is providing this platform to help you #SecureYourSeason.**

The steps are below, but you can also reach out to the NWBA for direct support (info@nwba.org).



Paralympic Sport Organization (PSO): USOPC Membership Recognition Process

Ongoing Compliance

Must comply with requirements from the Ted Stevens Amateur Sports Act and the USOPC Bylaws

USOPC will conduct an audit(s) to ensure criteria is met based on the NGB Audit Standards and Implementation Guide

Certification review every 4 years



Paralympic Sport Organization (PSO): USOPC Membership Recognition Process

Estimated Timeline

Application and NWBA Documentation Submitted: Sept. 28

o Strategic Plan, Bylaws, Policies & Procedures, Articles of Incorporation, Code of Conduct, Form 990, Audited Financial Statements, Organizational Structure (Board, Committees, & National Office), Membership Composition, Athlete Safety & Background Check Policy, High Performance Plan & Selection Procedures

Initial Application Remedies: 30-90 Days (estimated Nov. 1 – Dec. 31, 2020)

1st Hearing: 30-60 Days (December 17th)

Opportunity to Remedy: 3-6 Months (estimated Feb. 29 – Sept. 30, 2021)

2nd Hearing: 30-60 Days (estimated Mar. 30 – Nov. 30, 2021)

Final Remedies: Board Meeting Cycle (estimated all are completed by Dec. 2021)

APPLICATION CURRENTLY ON PAUSE WHILE USOPC INVESTIGATES NWBA COMMUNICATIONS

USOPC Audit Guidelines are an 89 page document that outline requirements placed on the NWBA to attain PSO Status.





Question & Answers



**NATIONAL
WHEELCHAIR
BASKETBALL
ASSOCIATION**

ROLL WITH U.S.



Election Results



**NATIONAL
WHEELCHAIR
BASKETBALL
ASSOCIATION**

ROLL WITH U.S.



Thank you! We look forward to your feedback



**NATIONAL
WHEELCHAIR
BASKETBALL
ASSOCIATION**

ROLL WITH U.S.