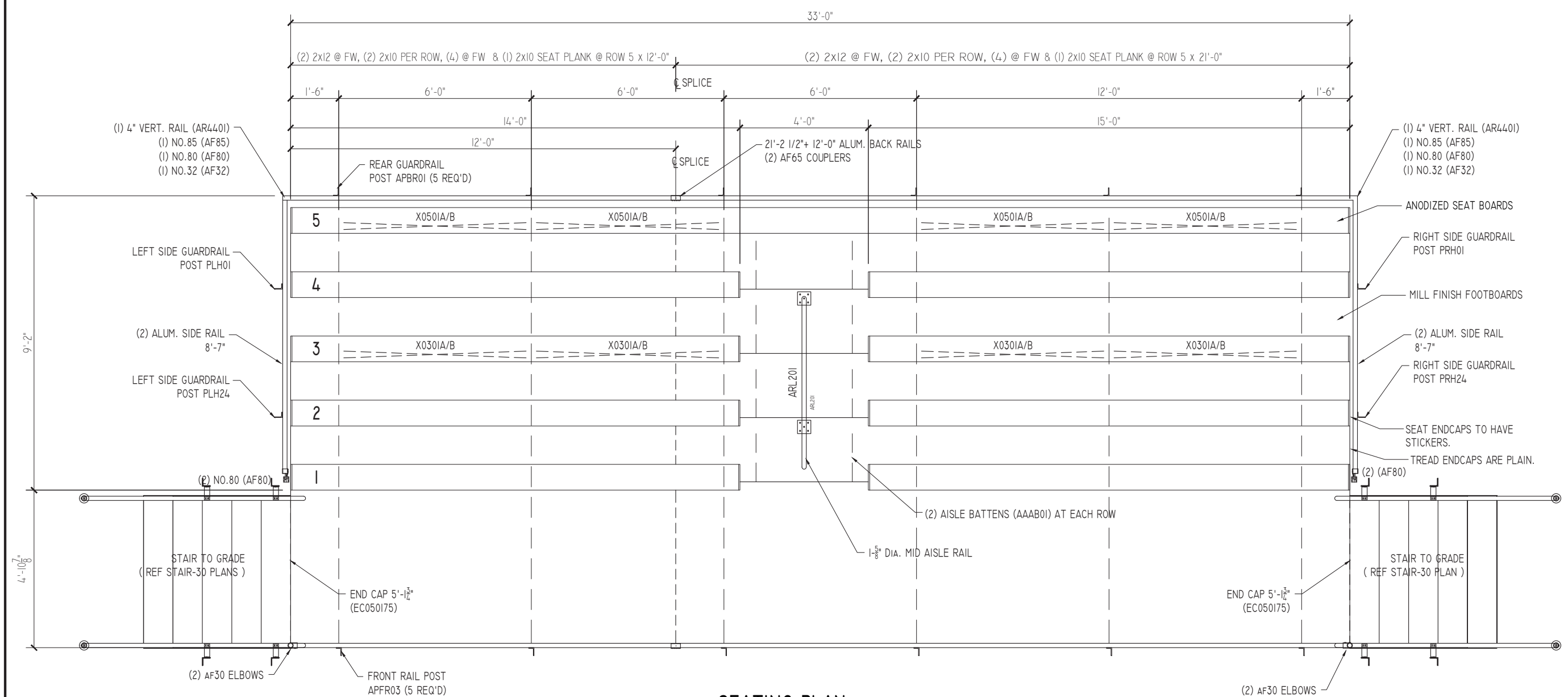




FRAMING PLANS
 ELEVATED 5 ROW BLEACHER
 WITH AISLE

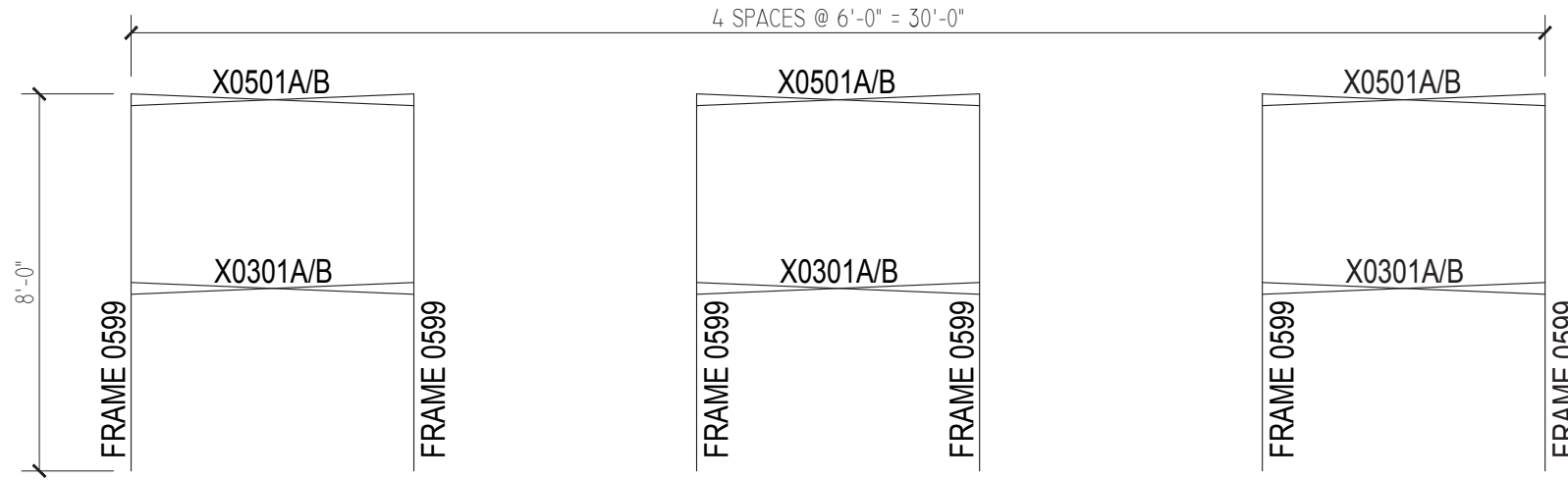
EL-0533ADC-A AND EL-0533GDC-A
 OPTIONAL -MS (MUD SILLS)



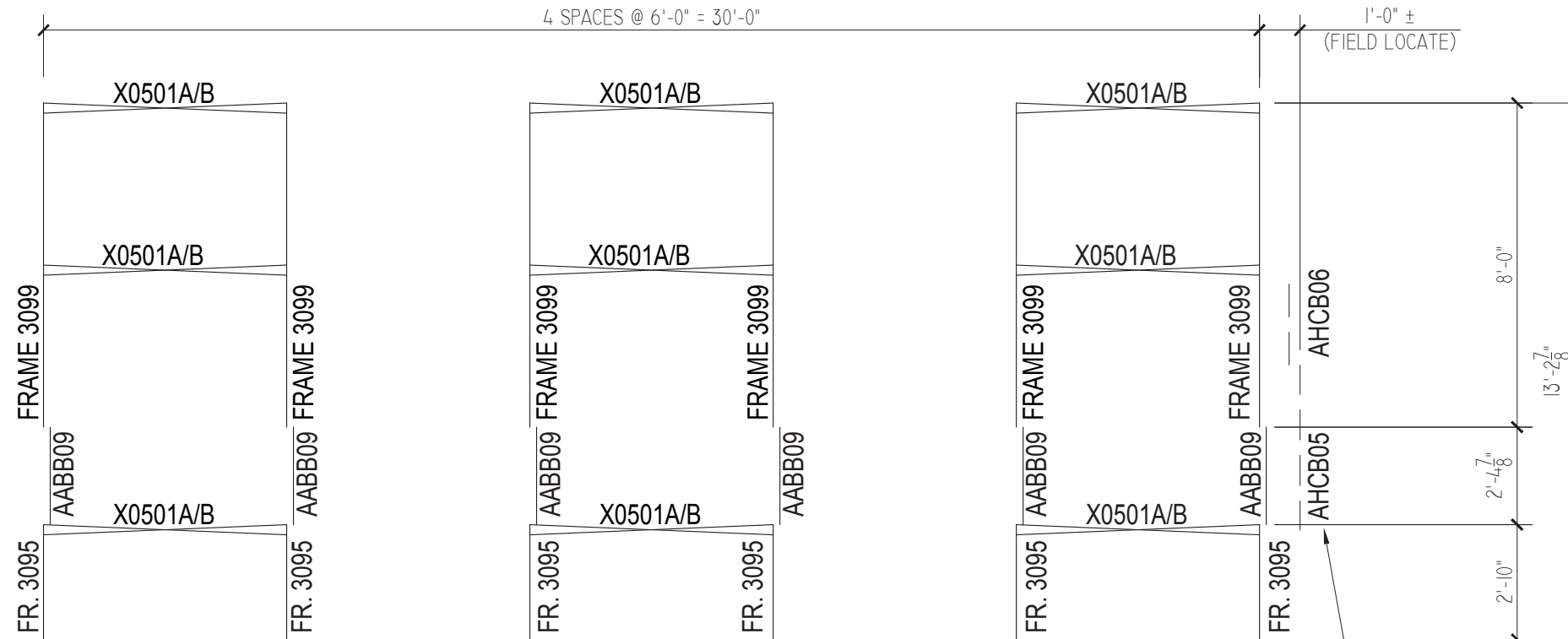
SEATING PLAN

SCALE: NONE
 NET SEATS = 98

DRAWN BY
CHECKED BY
DATE MAY 2010
SCALE NOTED
JOB NO. EL-0533ADC-A EL-0533GDC-A
DWG NO.

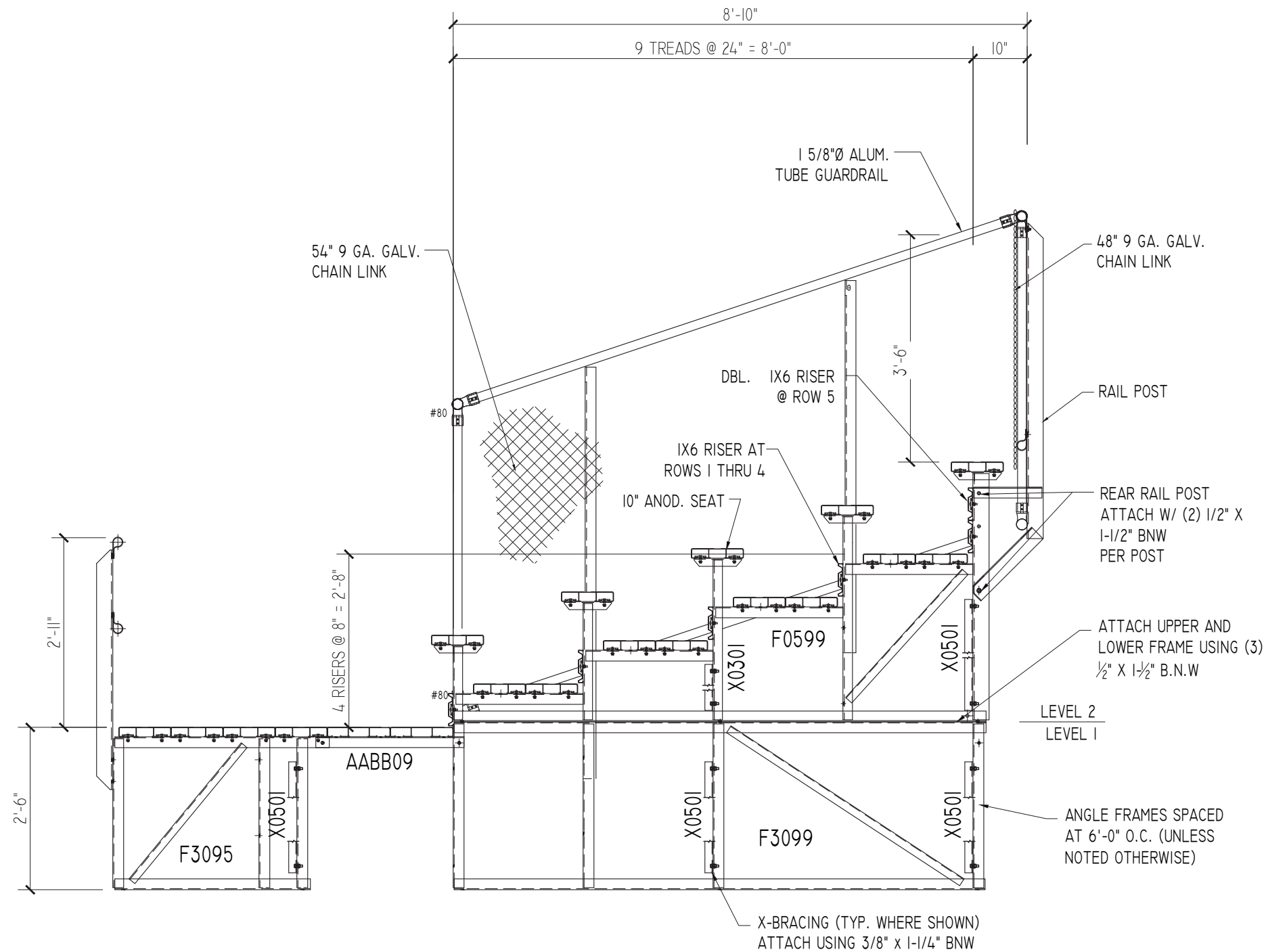


LEVEL 2 FRAMING PLAN



LEVEL 1 FRAMING PLAN

HC SEAT BATTENS (AHCB05 & AHCB06)
BOLT ASSEMBLY IN FIELD
(FOR HC MODELS ONLY)



TYPICAL SECTION THRU BLEACHER

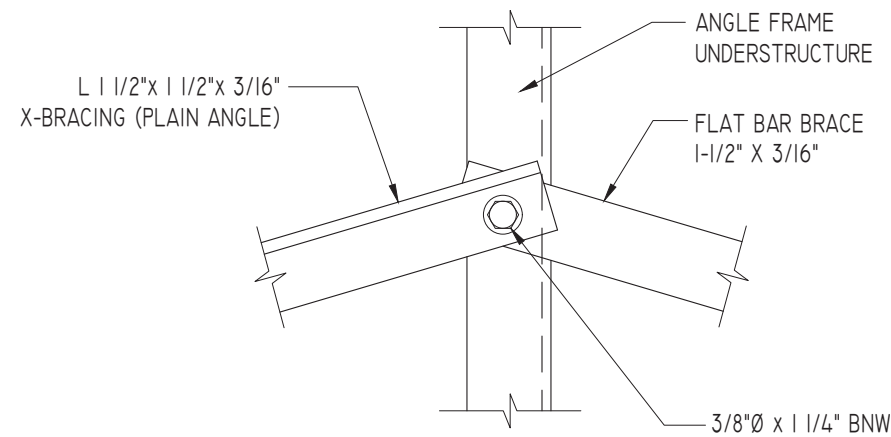
SCALE: 1/2" = 1'-0"



**SECTION THRU
ELEVATED 5 ROW BLEACHER
WITH AISLE**

**EL-05xxADC-A AND EL-05xxGDC-A
OPTIONAL -MS (MUD SILLS)**

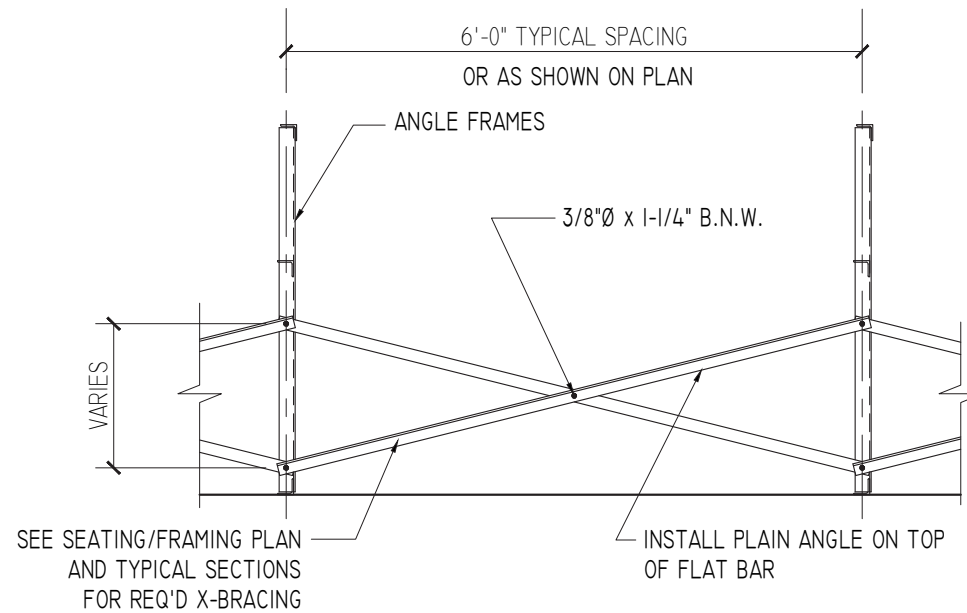
DRAWN BY
CHECKED BY
DATE MAY 2010
SCALE NOTED
JOB NO. EL-05xxADC-A EL-05xxGDC-A
DWG NO.



X-BRACE ASSEMBLY IS MADE UP OF (1) PLAIN ANGLE AND (1) FLAT BAR.

TYPICAL X-BRACE TO FRAME CONN.

SCALE: 3" = 1'-0"

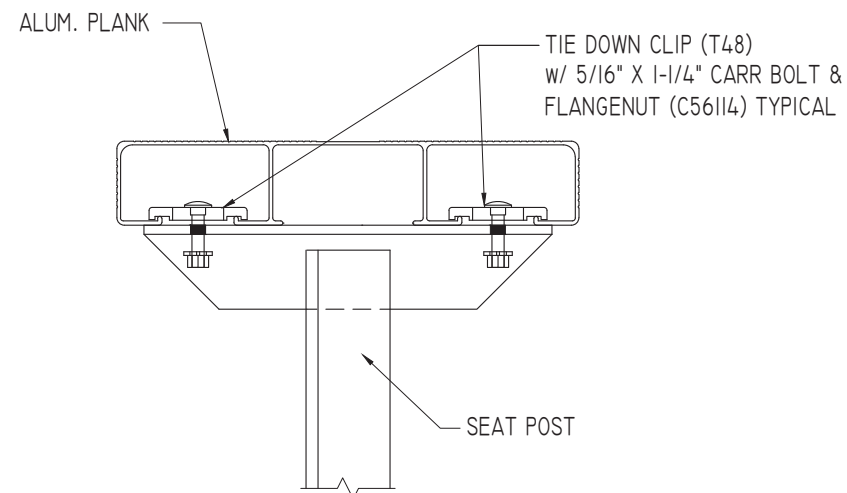
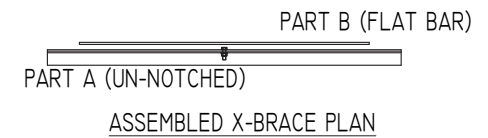


SEE SEATING/FRAMING PLAN AND TYPICAL SECTIONS FOR REQ'D X-BRACING

TYPICAL BRACING LAYOUT

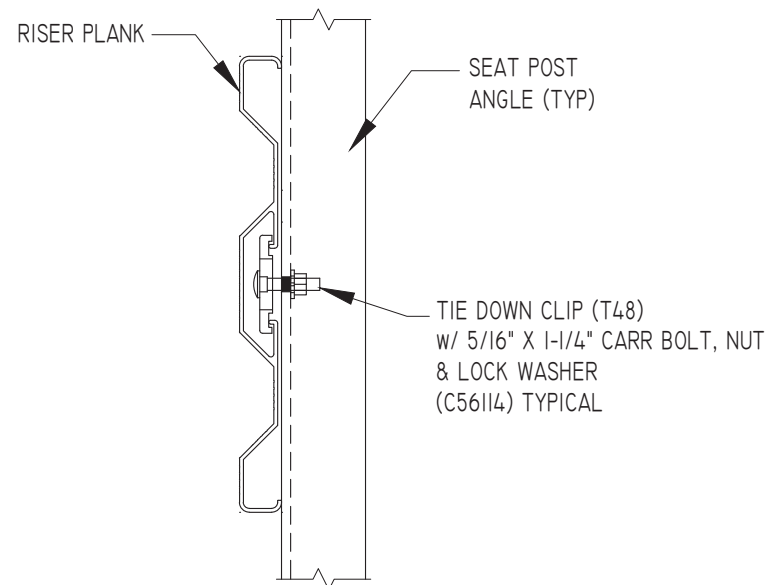
SCALE: 1/2" = 1'-0"

PRE-ASSEMBLE X-BRACE SETS. EACH SET CONSISTS OF A 'PART A (PLAIN ANGLE)' AND A 'PART B (FLAT BAR)'. PLACE THE PIECES TOGETHER AT THE FLAT SIDES AND CONNECT USING A 3/8" x 1-1/4" B.N.W.



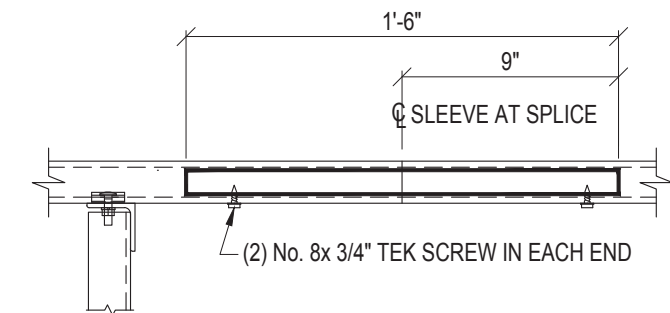
SEAT PLANK INSTALLATION

SCALE: 3" = 1'-0"

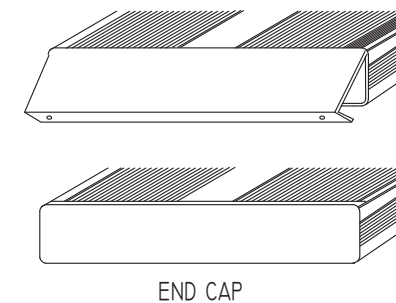


TYPICAL RISER INSTALLATION

SCALE: 3" = 1'-0"



ALUMINUM SLEEVE DETAIL

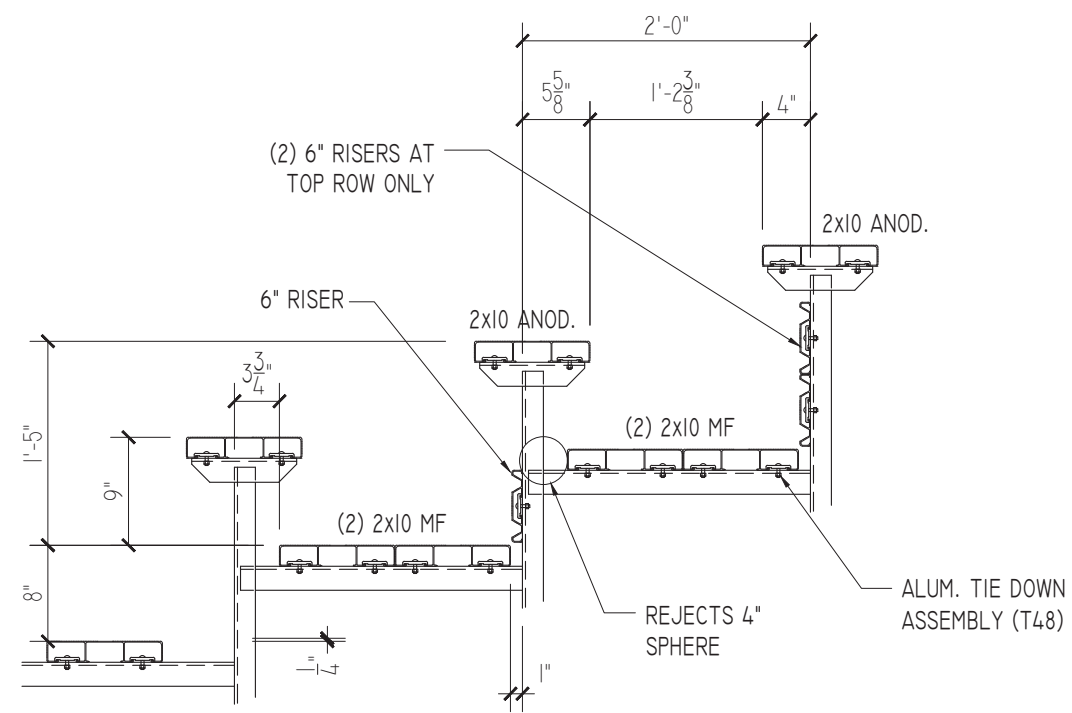


END CAP

1. LOCATE THE CHANNEL END CAP AS SHOWN, WITH THE WIDER FLANGE ON BOTTOM.
2. TAP THE CHANNEL INTO PLACE WITH A RUBBER Mallet OR SOFT WOOD.
3. DRILL (2) No. 8 x 3/4" TEK SCREWS THRU END CAP AND BOTTOM FLANGE OF PLANK
4. ENDCAPS WITH STICKERS ARE TO GO AT ENDS OF SEAT PLANKS, PLAIN ENDCAPS GO ON ALL OTHER BOARDS.

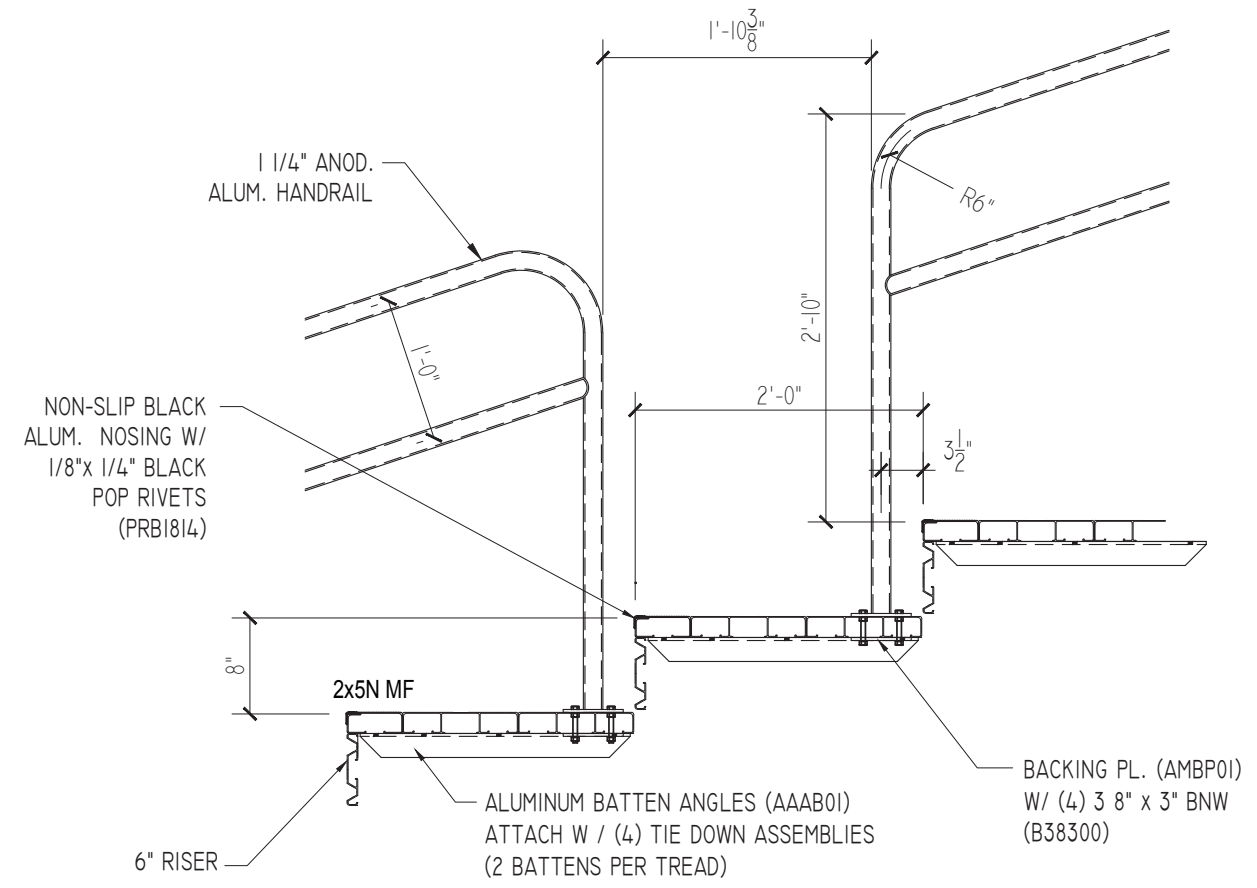
ENDCAP INSTALLATION DETAIL

SCALE: 3" = 1'-0"



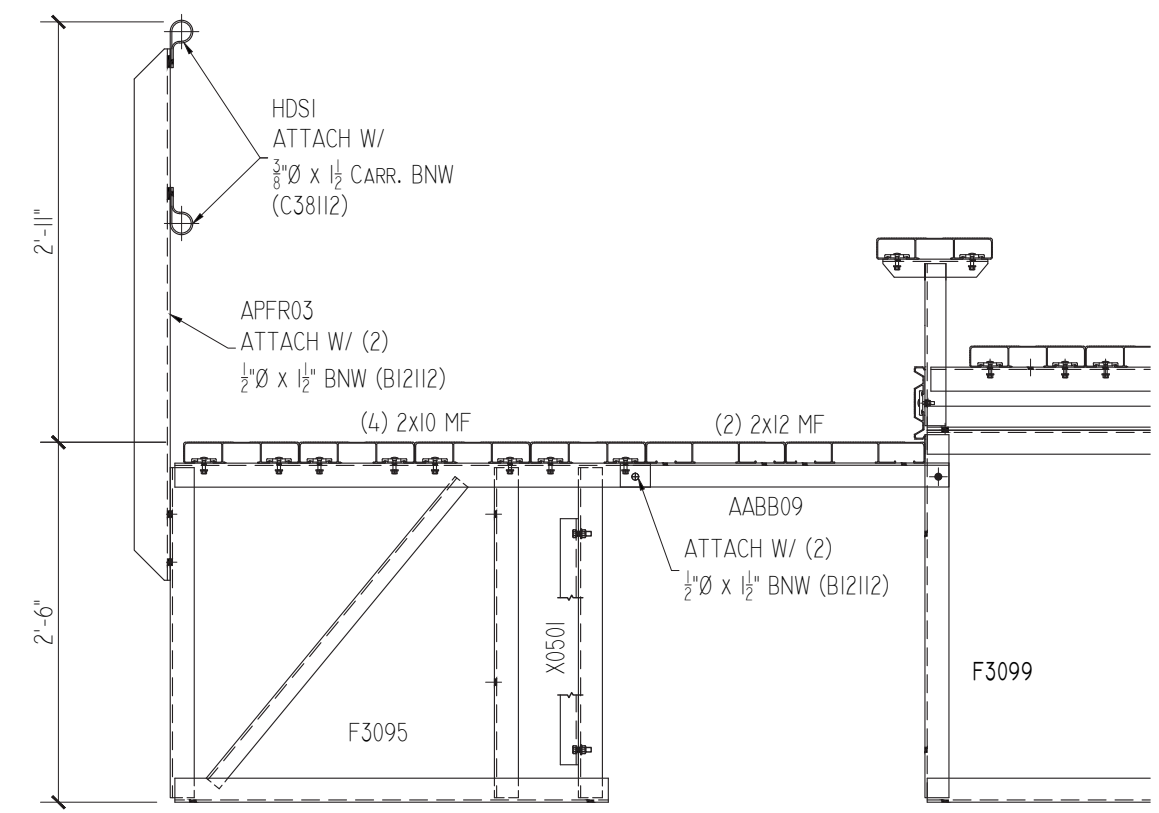
CONDITION AT SEATS

SCALE: 3/4" = 1'-0"



CONDITION AT AISLE

SCALE: 3/4" = 1'-0"



CONDITION AT FRONT WALK

SCALE: 3/4" = 1'-0"

111 North River Road
North Aurora, IL 60542
Phone: (800) 323-5664
Fax: (630) 897-0573
sales@belson.com



MISC. DETAILS
ELEVATED 5 ROW BLEACHER
WITH AISLE

EL-05xxADC-A AND EL-05xxGDC-A
OPTIONAL -MS (MUD SILLS)

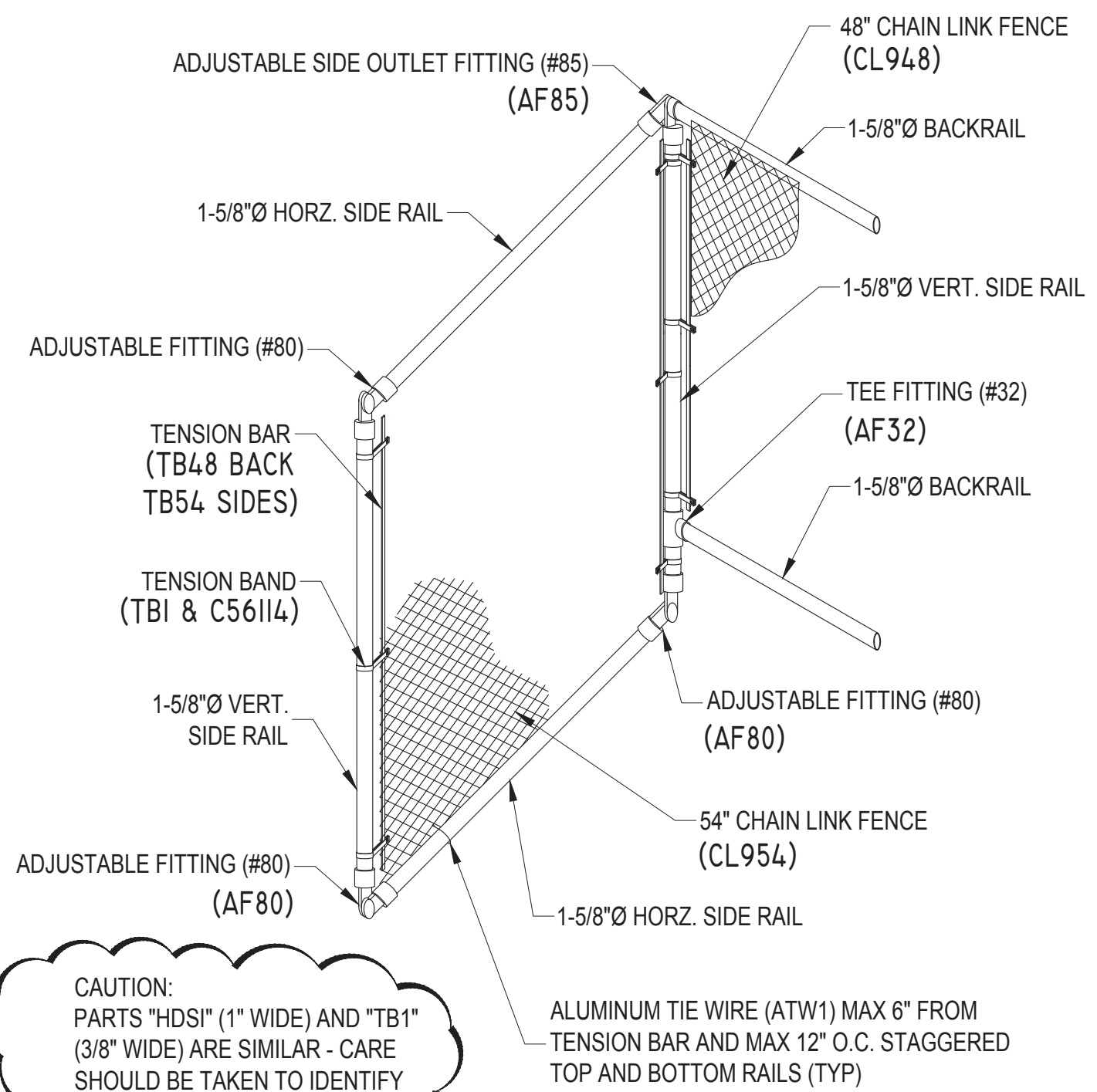
DRAWN BY
CHECKED BY
DATE MAY 2010
SCALE NOTED
JOB NO. EL-05xxADC-A EL-05xxGDC-A
DWG NO.



CHAINLINK DETAILS
 ELEVATED 5 ROW BLEACHER
 WITH AISLE

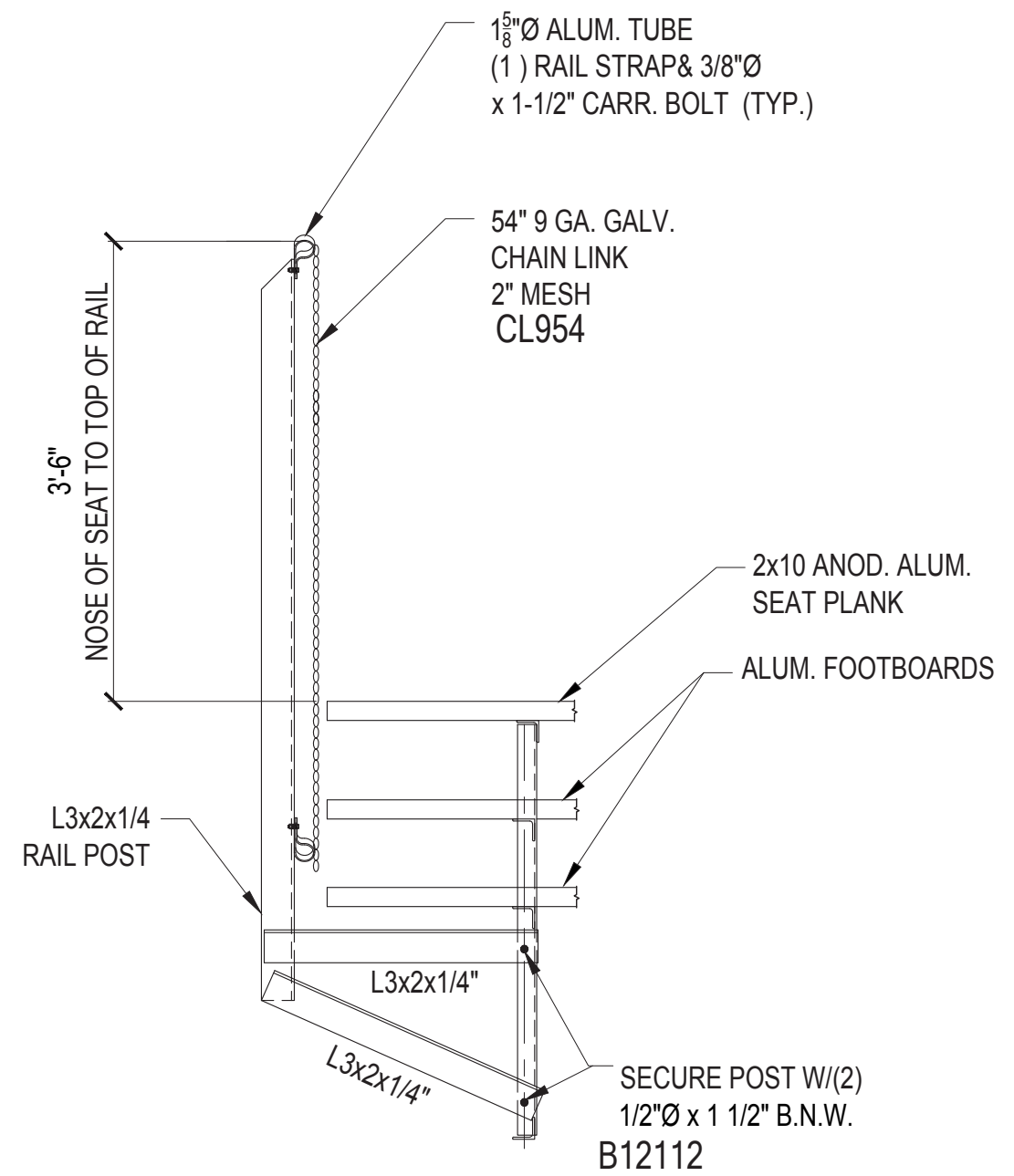
EL-05xxADC-A AND EL-05xxGDC-A
 OPTIONAL -MS (MUD SILLS)

DRAWN BY
 CHECKED BY
 DATE
 MAY 2010
 SCALE
 NOTED
 JOB NO.
 EL-05xxADC-A
 EL-05xxGDC-A
 DWG NO.



CAUTION:
 PARTS "HDSI" (1" WIDE) AND "TB1"
 (3/8" WIDE) ARE SIMILAR - CARE
 SHOULD BE TAKEN TO IDENTIFY
 THESE PARTS CORRECTLY.

ISOMETRIC VIEW
CONNECTION DETAIL OF BACK RAIL TO SIDE RAIL



RAIL POST CONNECTION DETAIL