



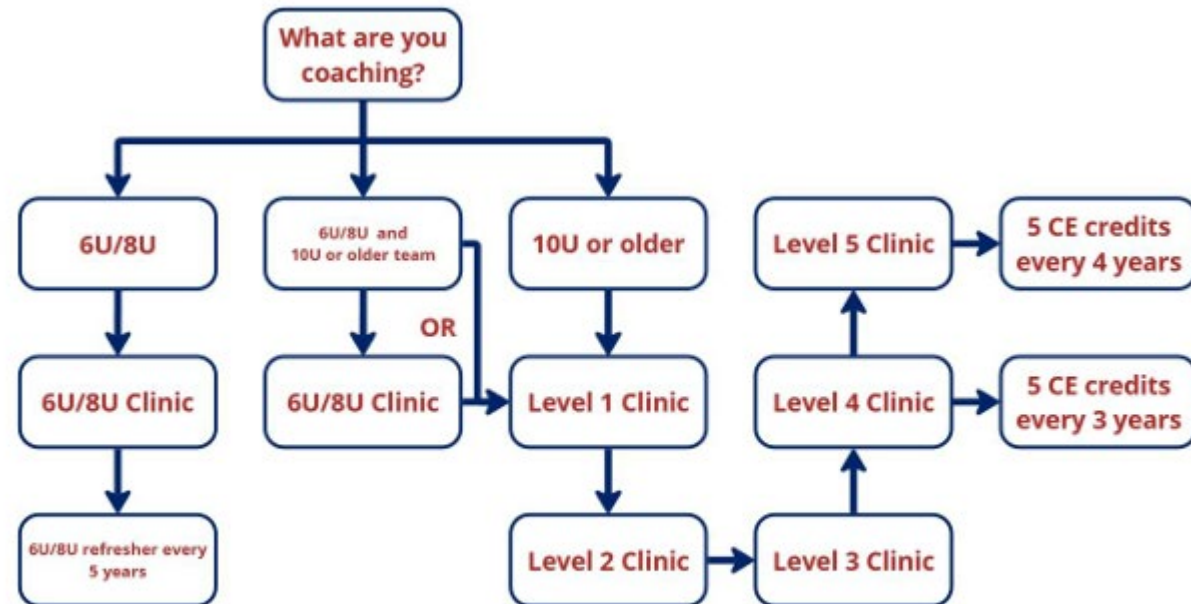
CEP Education Program

- **<https://www.usahockey.com/coaches>**
- **Coaching**
 - **Required Prior to Athlete Contact**
 - **USA Hockey Coach Registration**
 - **Approved Background Check**
 - **Safe Sport**
 - **Age Specific Module**
 - **On Approved Team Roster**
 - **Required by Dec 31**
 - **CEP Course**



CEP Education Program

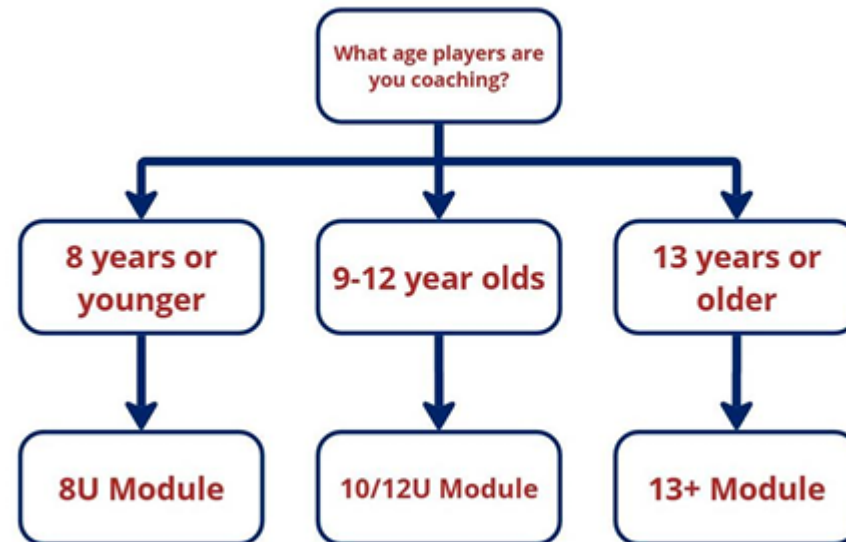
● CEP Course Required





CEP Education Program

- **Age Specific Module Required**
- **Take each module one time only.**





CEP Education Program

- **Continuing Education**
 - **Level 4 & 5 Coaches**
 - **Course offerings in-person, over Zoom or eLearning Modules**
 - **Continuing Education courses are changing weekly**



ADM

- **<https://www.admkids.com/>**
- **We Are here to help**
 - **On Ice coaching training**
 - **Collaborating, Learning and Adapting (CLA) Approach**
 - **Practice Management**
 - **Athlete Development Model (ADM) Presentation**
 - **Coaching**
 - **Organization Management**
 - **Ice Time Management**



ADM

- **How Can we help you**
 - **Zoom Meetings and Training**
 - **On-Site visits**

Michael Strahan

USA Hockey CEP Program

Utah ADM Coordinator

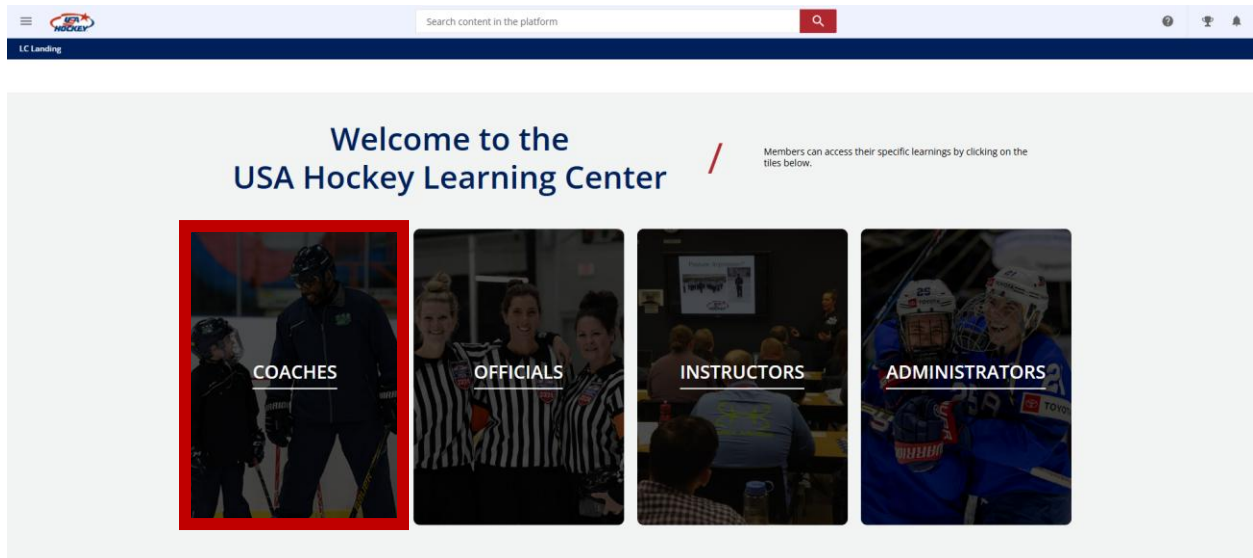
UtahADM@outlook.com

801-589-9268

How to sign-up for a clinic:

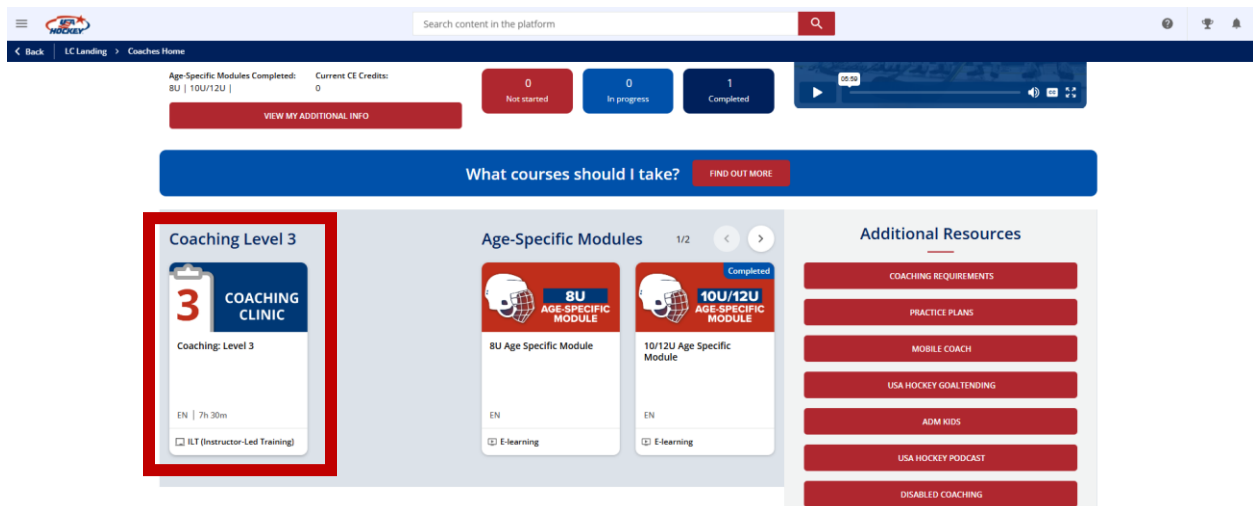
Log in to the USA Hockey Learning Center using your SSO# and created password through the 'Member Login'.

Once there, **click the coaches tab** highlighted in red below.



After entering your Coaches page, you will see your appropriate coaching level that you must take. In this example it is Coaching: Level 3.

Click the red highlighted course below



Once in the course, you can add a clinic to your cart by clicking ‘Add to Cart’ on the selected course. From there you will need to complete the payment process. After completion you will receive an email notification of enrollment into that session.

USA HOCKEY

Search content in the platform

< Back | LC Landing | Coaching: Level 3

Coaching: Level 3

ILT (Instructor-Led Training) | ENGLISH

[ADD TO PLAYLIST](#)

Course description

This **USA Hockey Coaching Level 3 Course** is an interactive, instructor-led training conducted over Zoom. It is a mandatory requirement for coaches to be rostered on a USA Hockey team. The course provides an in-depth review of coaching strategies, player development, and the core principles of USA Hockey's coaching philosophy. Coaches will gain valuable knowledge in practice planning, How-to-Coach Skills, and player safety. Through real-time discussions and expert instruction, participants will leave equipped with the tools necessary to foster a positive and effective hockey environment for all ages.

[Show more](#)

Course sessions
4 full online sessions

FILTERS

Session	Start Date	End Date	Time	Location	Events	Full online	Instructor	Zoom Meeting	Duration	Action
LV3 Female Specific	08/4/2025	06:30 pm - 08/6/2025	10:30 pm	(GMT -04:00) America/New_York	2 events	Full online	1 instructor	Zoom Meeting	8h	ADD TO CART

Purchase options

\$ 65.00

[ADD TO CART](#)

Course details

- Average completion time: 7 hours 30 minutes
- Time to complete: Unlimited access
- Course ID: I-G03D81

To see more clinics, you can scroll down.

Course sessions
4 full online sessions

FILTERS

Session	Start Date	End Date	Time	Location	Events	Full online	Instructor	Zoom Meeting	Duration	Action
LV3 Female Specific	08/4/2025	06:30 pm - 08/6/2025	10:30 pm	(GMT -04:00) America/New_York	2 events	Full online	1 instructor	Zoom Meeting	8h	ADD TO CART
Level 3	08/25/2025	07:30 pm - 08/27/2025	11:00 pm	(GMT -04:00) America/New_York	2 events	Full online	1 instructor	Zoom Meeting	7h	ADD TO CART
Level 3	08/27/2025	08:00 pm - 08/29/2025	12:00 am	(GMT -04:00) America/New_York	2 events	Full online	4 instructors	Zoom Meeting	8h	ADD TO CART
Level 3	09/8/2025	07:00 pm - 09/9/2025	10:30 pm	(GMT -04:00) America/New_York	2 events	Full online	1 instructor	Zoom Meeting	7h	ADD TO CART

Purchase options


\$ 65.00

[ADD TO CART](#)


Course details

- Average completion time: 7 hours 30 minutes
- Time to complete: Unlimited access
- Course ID: I-G03D81

If there are no courses available to sign-up, then you may see a screen like below. You will need to come back later once new clinics are posted.



Search content in the platform



[< Back](#) | [I.C. Landing](#) > [Coaching: 6U/8U](#)

Coaching: 6U/8U

This is an ILT Course for the 6U/8U Coaching Clinic

ILT (Instructor-Led Training) ENGLISH


ADD TO PLAYLIST

Course description

This live Zoom course is designed for coaches working with 6U and 8U players. Participants will explore the essential role of a coach at the youngest levels, understand Long-Term Athlete Development (LTAD) principles, and discover the "why" behind cross-ice hockey. We'll also break down what effective practices should look like to ensure a fun, engaging, and developmentally appropriate environment for every child on the ice.

Course sessions

0 sessions available



Purchase options

No available sessions
The course has no sessions. You will be able to enroll in a session when at least one is made available.

\$ 40.00

Course details

Average completion time
3 hours 30 minutes



Becoming a USA Hockey Coach

USA Hockey and the Coaching Education Program require every coach to be certified before stepping on the ice. Make sure to follow the guidelines below to stay up on your certification for the upcoming season.

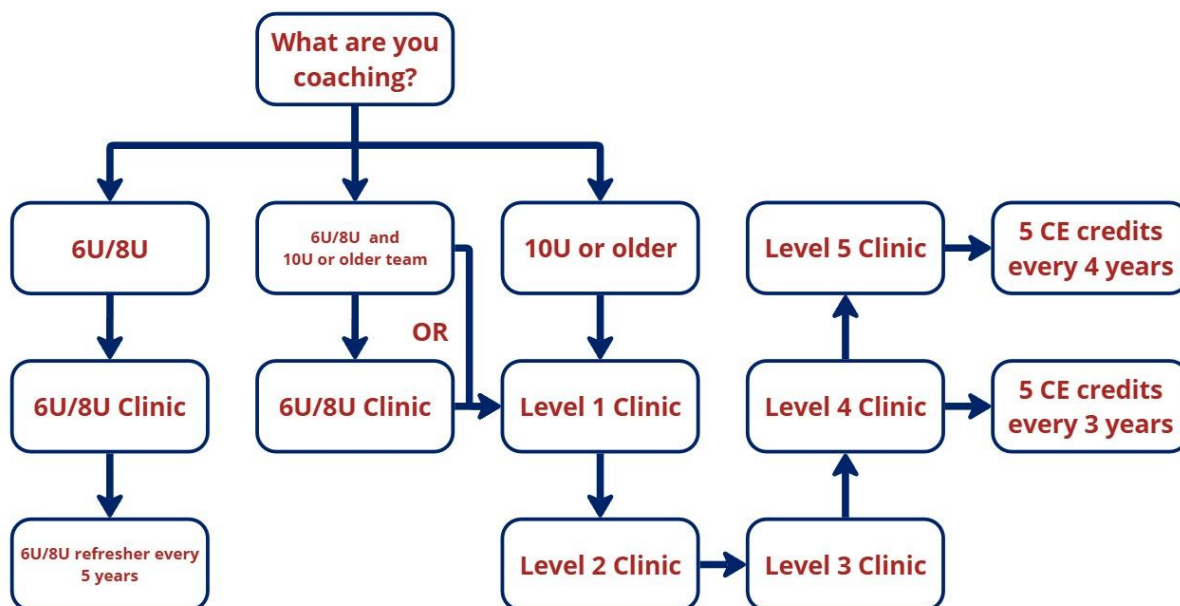
Coaching Requirements

USA Hockey Membership: Must register yearly. [Click here to register](#)

Background Screening: Must be completed every two years.

SafeSport Training: Must be completed annually.

Coaching Certification: Attend an instructor-led training session via Zoom. Use the flow chart below to understand what Coaching Clinic you will need to complete. If you have already completed a course, then you will move down to the following course. Level 1-3 certifications expire after one year. 6U/8U certifications have a 5-year expiration, but do not cover other age groups. If at any time you move on from 6U/8U, you will need to take a level 1 and continue down that path. Once you are a level 4 or 5, your expiration cycle will change to 3 or 4 years. You can only take 1 Coaching Clinic per season.





Age Specific Modules: Age-specific modules are eLearning courses completed at your own pace. These are specific to the age group you are coaching. Once completed, you will not need to retake the module and will retain access to the content. Refer to the flowchart below to determine your required course. This must be completed before you participate with your team. If you are coaching more than one team, you will need to make sure you are covered for all age groups.



Continuing Education: To the Level 4 and 5 coaches that need to take their continuing education, all continuing education is available on the USA Hockey Learning Center. There are course offerings in-person, over Zoom or eLearning Modules. The Continuing Education courses are changing weekly, so make sure to check in to see what is new.

Accessing the USA Hockey Learning Center: To access your courses, learning history and what courses you need to take, please log in to the USA Hockey Learning Center using your Single Sign-On username. The USA Hockey Learning Center is new for the 2025 season and will not house all your learning needs. If you are also an official, you can also access any of your courses and history on the site. [Click here to access](#)

District and Association Information: Each District, Affiliate and Association may have additional rules and requirements to step on the ice. Make sure to reach out to your association or district registrar for more information.

[Click here for District and Affiliate contacts](#)