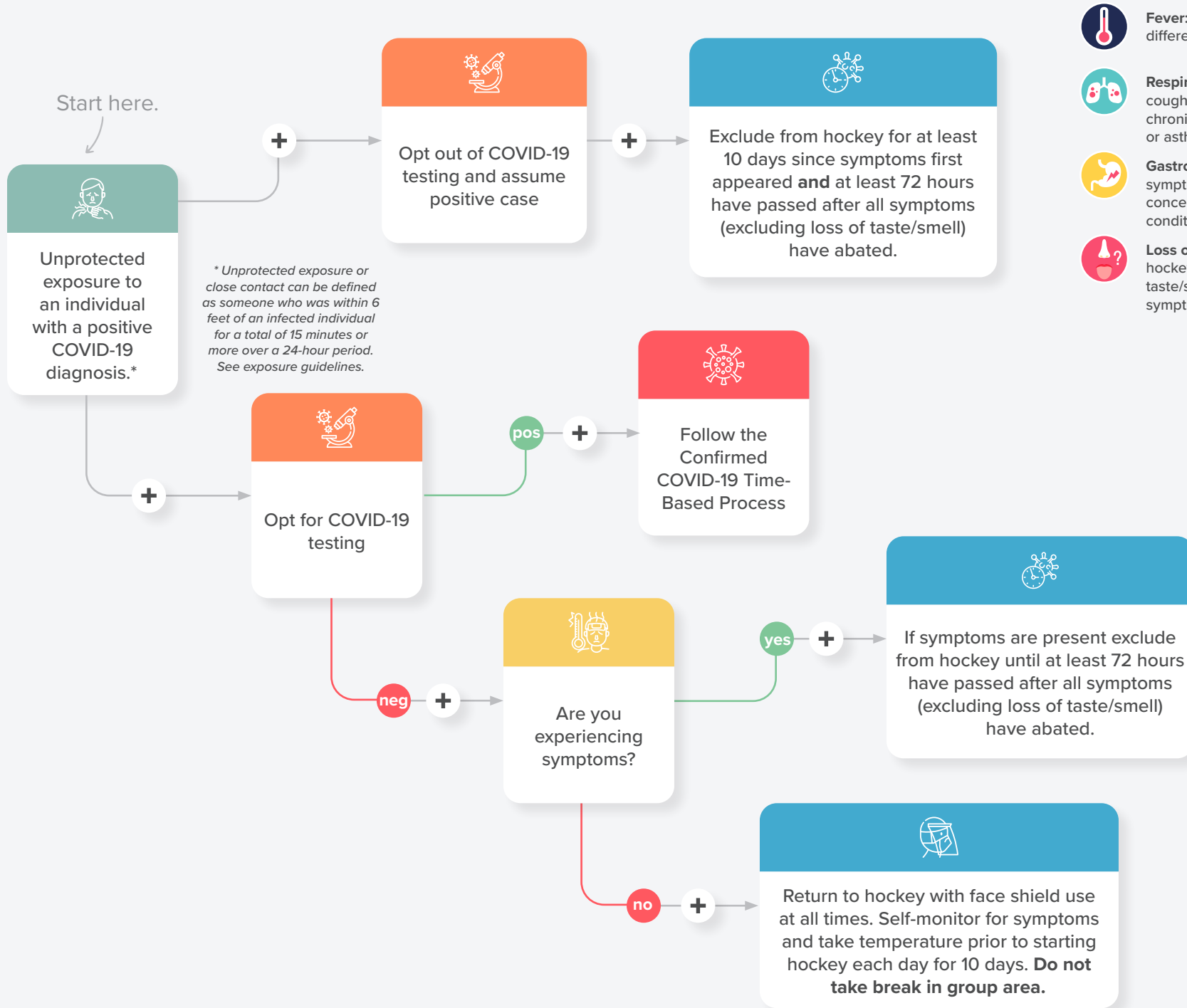


# Have you been exposed to COVID-19?



## Possible Symptoms

-  **Fever:** Over 100.4 taken with two different thermometers.
-  **Respiratory:** New and concerning cough not related to acid reflux or chronic conditions like allergies or asthma.
-  **Gastrointestinal:** Systemic symptoms that are new and concerning not related to chronic conditions.
-  **Loss of Taste/Smell:** Return to hockey 10 days after loss of taste/smell as long as no other symptoms develop.