

# IMPORTANT INFORMATION

# MOUNDS VIEW CLASSIC

POWERED BY MINNESOTA HEAT

**PLEASE READ AND PASS ONTO YOUR TEAM(S) & FANS.**

**COACHES AND DIRECTORS WILL BE RESPONSIBLE FOR THEIR PLAYERS AND FANS FOLLOWING THESE STRICT RULES!**

## *Schedule*

**CLICK HERE TO ACCESS THE TOURNAMENT SCHEDULE.**

**NOTE: THERE WILL BE NO HARDCOPY PRINTED BRACKETS TO AVOID LARGE GATHERINGS IN A CONFINED AREA.**

## *Location*

**FOREST LAKE HIGH SCHOOL**

**6101 SCANDIA TRAIL**

**FOREST LAKE, MN**

**FOREST LAKE MIDDLE SCHOOL**

**21395 GOODVIEW AVE N**

**FOREST LAKE, MN**

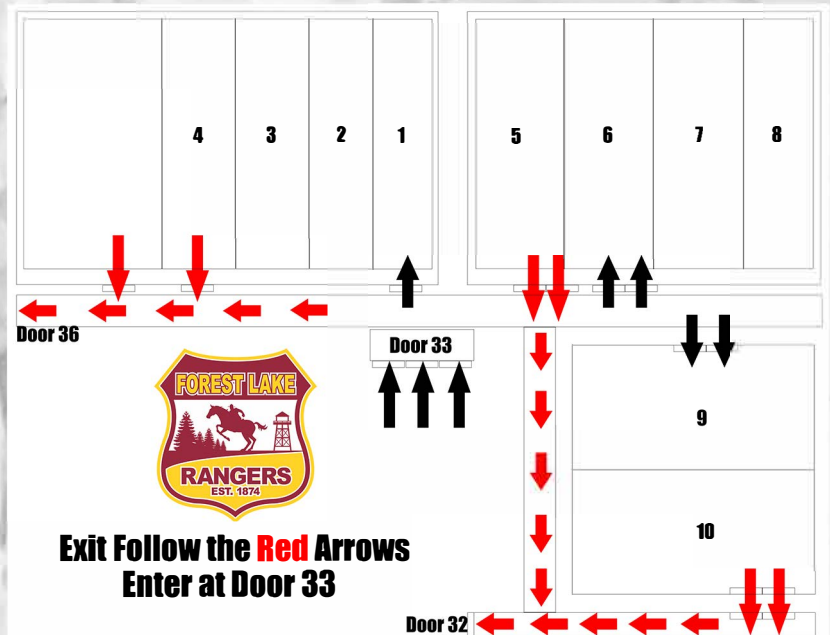
## *Event Pass*

**ENTER THROUGH DOOR 33 AT HS, DOOR 1 AT MS. TEAMS SHOULD CHECK-IN AT THE SITE OF THEIR FIRST GAME. ONLY ONE REPRESENTATIVE WILL BE ALLOWED INSIDE TO PICK UP THE WRISTBANDS FOR EACH TEAM. THAT REPRESENTATIVE WILL BE ASKED TO LEAVE A PHONE NUMBER OF THE CONTACT TO BE TEXTED WHEN THE COURT IS AVAILABLE.**

**EACH TEAM WILL BE GIVEN 13 TOTAL WRISTBANDS, 3 FOR COACHES AND 10 FOR FANS. TEAMS WILL BE RESPONSIBLE FOR PROVIDING A CLOCK OR BOOK WORKER. ANYONE IN KINDERGARTEN OR OLDER MUST HAVE A WRISTBAND.**

**FAN WRISTBANDS FOR THE TEAM WILL BE \$150 FOR ALL 10. EACH TEAM MUST PAY \$150 AT CHECK IN FOR THE FAN/COACH WRISTBANDS. THE PRICE IS \$150 PER TEAM REGARDLESS OF IF ALL 10 FAN WRISTBANDS ARE USED.**

**YOU MUST HAVE A WRISTBAND TO ENTER THE FACILITY. NO EXCEPTIONS.**



I M P O R T A N T I N F O R M A T I O N

# MOUNDS VIEW CLASSIC

P O W E R E D B Y M I N N E S O T A H E A T

## *Waiver*

**ALL PLAYER FAMILIES MUST ACKNOWLEDGE A WAIVER BEFORE PLAYING.**

**[CLICK HERE TO ACCESS THE WAIVER FORM.](#)**

## *Rules*

**[CLICK HERE TO VIEW THE TOURNAMENT RULES.](#)**

## *Building Entry*

**PLAYERS, FANS AND COACHES WILL BE ALLOWED TO ENTER WHEN THE TEAM REPRESENTATIVE WHO PICKED UP WRISTBANDS RECEIVES A TEXT SAYING THE COURTS ARE CLEARED AND THE TEAM MAY ENTER. IT IS THE REPRESENTATIVES RESPONSIBILITY TO COMMUNICATE THIS TO THE REST OF THE TEAM.**

**NO ONE SHOULD COME TO DOOR 33 AT HS OR DOOR 1 AT MS UNLESS THEY HAVE RECEIVED A TEXT.**

**WE WILL NOT BE TEMPERATURE CHECKING THIS WEEKEND. EACH GROUP MEMBER OF THE GROUP SHOULD ASK THEMSELVES THESE QUESTIONS: DO YOU HAVE A TEMPERATURE OVER 100.4? HAVE YOU BEEN ASKED TO SELF-QUARANTINE? HAVE YOU BEEN IN CONTACT WITH ANYONE KNOWN TO BE A COVID-19 CARRIER OR BEEN IN CONTACT WITH ANYONE ELSE WHO IS SELF-ISOLATING DUE TO COVID-19? ANYONE ANSWERING "YES" TO ANY OF THE QUESTIONS SHOULD NOT ENTER THE FACILITY.**

**EVERYONE ENTERING THE FACILITY MUST BE WEARING A MASK AND THE MASK MUST REMAIN ON FOR THE DURATION OF THEIR TIME IN THE BUILDING.**

**ALL COACHES, PLAYERS AND SPECTATORS WILL ENTER THE BUILDING THROUGH DOOR 33 AT THE HIGH SCHOOL AND DOOR 1 AT THE MIDDLE SCHOOL.**

I M P O R T A N T I N F O R M A T I O N

# MOUNDS VIEW CLASSIC

P O W E R E D B Y M I N N E S O T A H E A T

## *Post-Game Protocol*

**FOLLOWING THE GAME ALL MEMBERS OF THAT GROUP WILL BE REQUIRED TO LEAVE THE BUILDING IMMEDIATELY AND GO OUTSIDE. AN EXCEPTION TO THIS IS IF THE TEAM IS PLAYING BACK TO BACK GAMES. DO NOT EXIT THE DOOR YOU CAME IN. EXITS ARE BELOW.**

**NEW FIELDHOUSE GROUPS (COURTS 1-4) MUST EXIT THE FIELDHOUSE USING THE DOORS ON COURTS 4 AND 5 AND PROCEED TO DOOR 36 TO EXIT THE FACILITY.**

**OLD FIELDHOUSE GROUPS (COURTS 5-8) PROCEED DOWN THE HALLWAY NEXT TO THE CONCESSION STAND AND TAKE A RIGHT AT THE END OF THE HALL TO REACH DOOR 32 FOR FACILITY EXIT.**

**VARSITY COURT GROUPS (COURTS 9 AND 10) SHOULD PROCEED TO THE STAIRCASE TO THE BACK OF THE GYM (BEHIND COURT 10) AND EXIT THROUGH THE FIRE EXIT DOORS. PROCEED DOWN THE HALLWAY TO DOOR 32 FOR FACILITY EXIT.**

**SIGNAGE FOR EXIT AT THE MIDDLE SCHOOL WILL BE PROVIDED. YOU WILL NOT EXIT THE DOOR YOU CAME IN. ALL TEAMS WILL EXIT FROM THE GYM THEY PLAY IN.**

**ALL TEAMS WILL BE PUSHED TO EXIT IMMEDIATELY FOLLOWING THEIR RESPECTIVE GAME (UNLESS PLAYING BACK TO BACK) THIS WILL HELP US CLEAN THE COURTS PRIOR TO THE NEXT GAME. PLEASE DO NOT DO TEAM MEETINGS ON THE BENCH AFTER THE GAME, WE ASK THAT EVERYONE PLEASE LEAVE THE BUILDING AS SOON AS POSSIBLE SO WE CAN KEEP THINGS ON TIME.**

## *Between-Game Protocol*

**BETWEEN GAMES, TEAM BENCHES AND SPECTATOR CHAIRS WILL BE WIPED DOWN. BATHROOMS AND DOOR HANDLES WILL BE SANITIZED AND WIPED DOWN THROUGHOUT THE DAY.**

## *Water*

**WATER FOUNTAINS WILL BE TURNED OFF BUT WATER FILLERS WILL BE TURNED ON. YOU MUST BRING WATER INTO THE FACILITY BEFORE THE GAME. YOU WILL NOT BE ABLE TO LEAVE AND RE-ENTER DURING THE GAME.**

I M P O R T A N T I N F O R M A T I O N

# MOUNDS VIEW CLASSIC

P O W E R E D B Y M I N N E S O T A H E A T

## *Awards*

**THERE WILL BE NO AWARDS AT THIS EVENT.**

## *FAQ*

***DOES MY CHILD NEED A WRISTBAND AND COUNT IN THE GROUP OF FANS?***

**ANYONE KINDERGARTEN OR OLDER NEEDS A WRISTBAND AND WILL COUNT IN THE GROUP OF FANS.**

***I HAVE PLAYERS PLAYING ON MULTIPLE TEAMS, HOW DOES THAT WORK?***

**YOU WILL ONLY NEED 1 WRISTBAND BUT YOU WILL COUNT IN THE NUMBER OF FANS FOR BOTH TEAMS SO KEEP THAT IN MIND WITH WRISTBAND ALLOCATION.**