



Welcome to the 2023 Falls Fight to the Finish tournament. We appreciate your team joining our event and are looking forward to a safe & fun event. Below is general information to help facilitate the weekend.

Field Locations:

- The tournament will be played at 3 different locations, approximately 5 minutes apart from each other.
 - We try to minimize moves between parks on the same day, but there are a few times this will occur.
- Maps are attached at the end of this letter, with the best parking locations highlighted. Field locations are also loaded into Tourney Machine:
 - 1) Menomonee Falls High School Varsity Field (1 field): N80W14350 Titan Drive (corner Titan/Franklin)**
 - **PARKING** – BE CAREFUL PARKING ON THE STREET DOWN THE FIRST/THIRD BASE LINES – **THESE SPOTS ARE EASILY REACHABLE BY FOUL BALLS.**
 - 2) Oakwood Park (2 Fields): 1 Dennis Droese Drive**; (off Good Hope b/t Pilgrim & Lilly)
 - 3) Willowood Park (2 Fields): W151N5476 Badger Drive** (off Silver Spring b/t Pilgrim & Lilly)
 - **PARKING** – Historically parking can be limited in the park lot with the tournament and other park activities. **All street parking rules are in effect.** After the lot, the closest spots are within the adjacent neighborhood. Note: there is no parking allowed on Badger Drive (map on next page)

Park Rules

All Menomonee Falls Park rules are in effect and must be obeyed. These rules are posted in several areas around the park, but here are a couple of the most important rules.

- We ask there are No Dogs regularly around the tournament fields. There is ample space at each park for dogs, but we ask that you please limit being in the crowded tournament areas around the fields with dogs.
- No tobacco is permitted on premises or surrounding campuses at any time.
- Park according to all posted signs, there are no temporary parking locations in effect.

Concessions & Vendor Partners

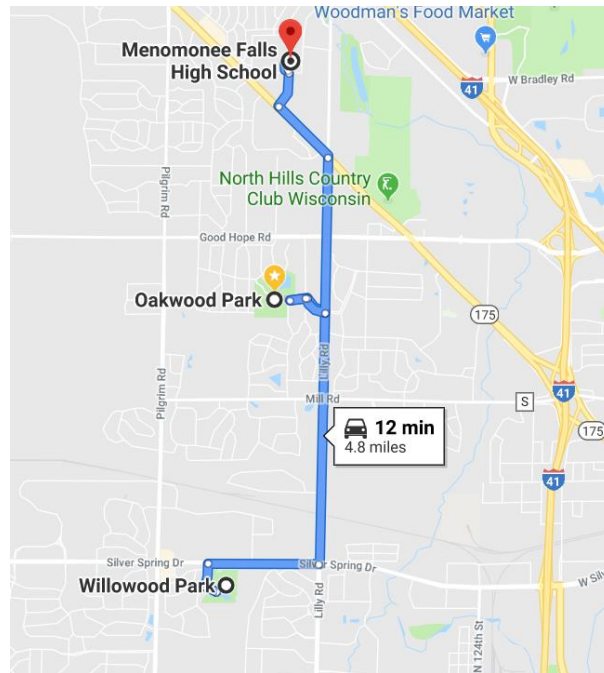
This is our organization's primary fundraiser, and we appreciate your support. We keep pricing reasonable so you can limit carry ins. **Full concessions will be available on Sat & Sun at all locations. Friday night will have limited offerings but will have Chick-Fil-a sandwiches available for purchase.**

We will also have offerings from great vendor partners throughout the weekend:

- 1) Kona Ice Truck** – Will be at Oakwood Park on Saturday & Sunday.
- 2) Oakwood & Willowood Parks only** – **Will be serving beer/spiked seltzers for purchase.** Proper ID is required, Falls Angels reserves the right to refuse service at our discretion. Please note – the only alcohol allowed on the premise is that which is purchased from the concession stand. No carry-ins are allowed per Village policies.
- 3) T-Shirts and Other Accessories:** Tournament Shirts will be available throughout the event, at Oakwood Park only and online (pre-sale).
- 4) Local events / businesses (if you have down time):**
 - **Falls Memorial Fest:** On Saturday, all day, there is a free Memorial Day street party with live music and food vendors. [Falls Memorial Fest - Menomonee Falls Downtown](#)
 - **Some other local food options (in addition to the usual fast food places):**
 - DJ's Sports Bar, Kraverz, Pizza Crafters, Ally's Bistro (closed Sun), Fiddleheads Coffee, Su Casa, Pepino's Pizza, B-52's Burgers, Dave's Hot Chicken, Mr. Brew's Taphouse, & more

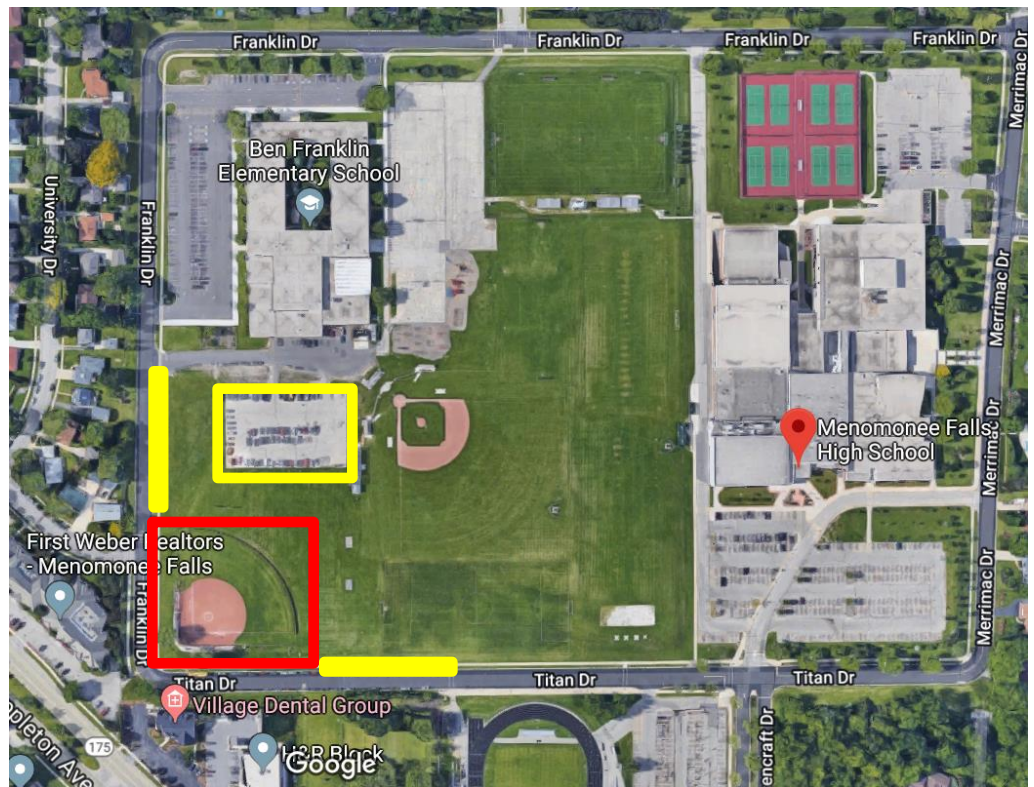
Overview of field locations:

All fields are located in South-Eastern Menomonee Falls, just off 41/45.



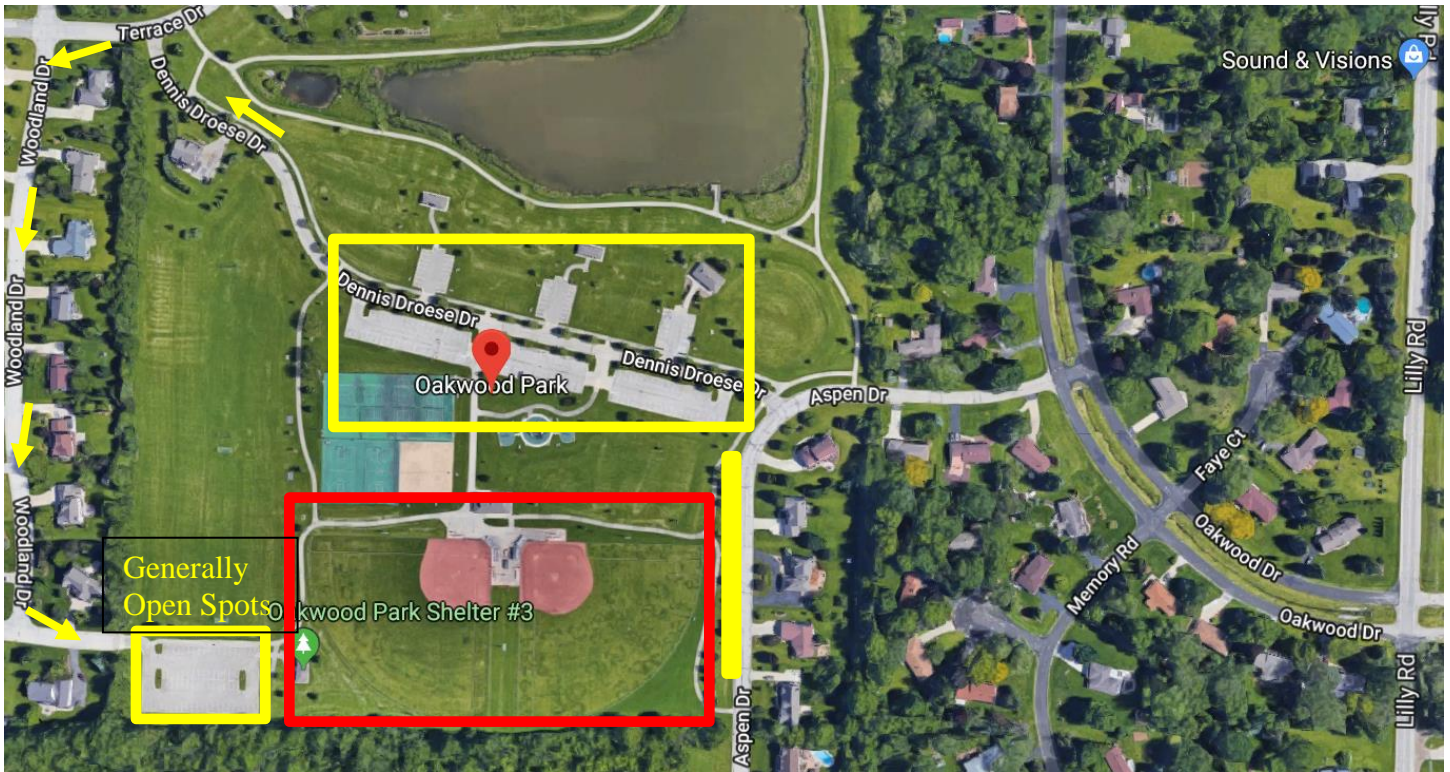
Menomonee Falls High School Varsity Softball Field :

-  = Field
-  = Parking



Oakwood Park:

= Fields = Parking



Willowood Park:

= Fields = Parking

Parking is historically more challenging at Willowood.

Please take note of neighborhood parking rules.

NOTE: There is No Parking Available (PINK LINE) on Badger Dr (signs posted)

