

# 2024 SIZING FORM

## ORDERING INSTRUCTIONS

This Form is for Sizing your CORE UNIFORM Items only.

When you arrive at your Sizing Event, you can try on sample JERSEYS, SOCKS and PANT SHELLS plus WARM-UP JACKETS AND PANTS.

Use this Form to RECORD YOUR SIZES (K&B Staff will be available to assist).

Then, use this Form as a reference later when you get home to **PLACE YOUR ORDER ONLINE** at [www.kandboutfitters.com](http://www.kandboutfitters.com).

## DELIVERY DETAILS

Materials for Orders received by your Association's CUT-OFF DATE will be Released in BULK to the Association for distribution to the Team Managers and ultimately, to the members.

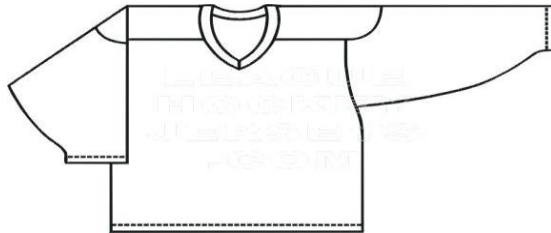
Orders received by K&B after the Club's assigned CUT-OF DATE will not be processed until after the BULK Orders are Delivered to the Association and possibly after the start of the season. LATE Orders may be picked up at K&B in Ambridge or shipped directly to the members with Shipping Charge.

Your Online Order may include other garments, spiritwear or bags. However, these items will not be included with the Clubs Bulk Delivery. Instead, you may elect to pick these items up at K&B in Ambridge or you may have them Shipped Directly to you.

Please also Note that All Sales are Final with most items being personalized.

### JERSEYS

Jersey Size



\_\_\_\_\_ size

### SOCKS

Sock Size



\_\_\_\_\_ size

### HOCKEY PANT SHELL

Shell Size



\_\_\_\_\_ size

### CCM Brand WARM-UP JACKET AND PANTS

Jacket Size

Pant Size



\_\_\_\_\_ Jacket Size

\_\_\_\_\_ Pant Size

**K&B OUTFITTERS - 724-266-1133 - email us at [kandboutfitters@gmail.com](mailto:kandboutfitters@gmail.com)**