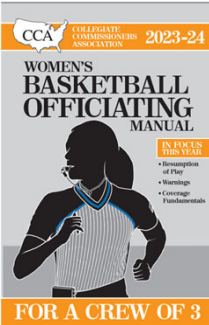




1

Horizontal lines for notes

Mechanics
Changes and
Focus Areas




FOR A CREW OF 3

2

Horizontal lines for notes

CCA
Mechanics
Manual
Dedication:



Dedication

Charlene Curtis

Friends and family have no shortage of identifiers when it comes to describing the late Charlene Curtis. "You could just name so many rooms and I could say, 'Yep,'" said NCAA women's basketball official Bob Karterer. "She did it all so well. She was just a great boss, person, friend, colleague, mentor, all the things."

Perhaps the best label comes from Shantlyn Grant, Curtis' life partner for more than two decades. "She's always been the unicorn in the room," Grant said. "Rare and highly revered."

In the mid-1970s, while playing basketball at Radford University, Curtis became the school's first 100-point scorer — men's or women's — and secured her induction into the school's Hall of Fame.

She transitioned into coaching, and after taking the helm at Radford, moved on to Temple, where she became the school's first African American women's basketball coach, and then to Wake Forest, becoming the first Black women's basketball coach in the Atlantic Coast Conference.

After a brief foray into broadcasting, Curtis shifted gears once more time, remaining involved in the game in another unique capacity when she became the supervisor of women's basketball officials for multiple conferences including the ACC, the Big South, the Colonial Athletic Association and the Southern Conference.

"We're thinking, 'What?' A coach as the coordinator of officials?" said Karterer with a laugh. "We had our doubts. ... And there was nobody better."

"She always brought that coaching mentality to us, that she was our coach and biggest fan. She was a great teacher," said

3

Horizontal lines for notes

NCAA WOMEN'S BASKETBALL

Faking Being Fouled:

- Signal during live ball (1st offense) wait for next clock stoppage to report.
- Second fake
 - by offense, assess TT immediately.
 - By defense, withhold to allow scoring opportunity then assess TT.

4

Signal: Faking

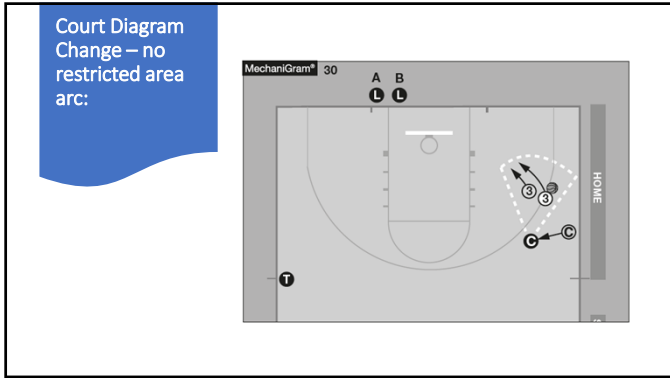
The first illustration shows three referees: the first has one arm raised, the second has both arms raised, and the third has one arm raised and the other extended. The second illustration shows two referees: the first has both arms raised, and the second has one arm raised and the other extended.

5

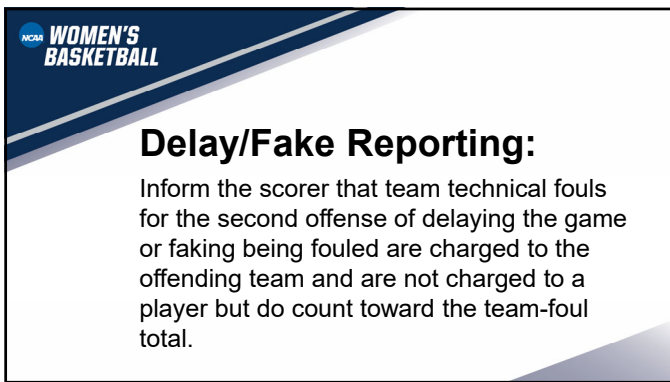
Signal: Faking

The illustration shows four referees: the first has one arm raised, the second has one arm raised and the other extended, the third has both arms raised, and the fourth has one arm raised and the other extended.

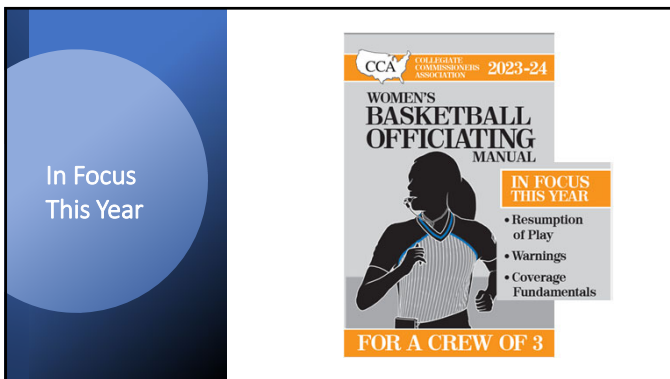
6



7



8



9

NCAA WOMEN'S BASKETBALL

Terminology Change:

Secondary defender(s) are now help defenders.

10


NCAA WOMEN'S BASKETBALL

Foul reporting 0-99:

- Verbally and visually communicate.
- Traditional numbers vs new numbers.


11

New number reporting:



I

This reads "24" to the scorer.



J

Sixty...
Seven

This reads "67" to the scorer.

12

NCAA WOMEN'S BASKETBALL

Game ball and backup:

R will choose a backup ball in addition to the game ball before the start of the game, confirming the size.

13



14

NCAA WOMEN'S BASKETBALL

10-second backcourt count:

No visible count for the 10-second backcourt violation when the shot clock is turned off and more than 10 seconds remain in the quarter/overtime.

15

NCAA WOMEN'S BASKETBALL

Clock awareness:

Work to know the time of possession at the start of every possession to correct any timing mistakes, and at the end of each quarter and overtime to assist with the 10-second backcourt count.

16

NCAA WOMEN'S BASKETBALL

Option to advance:

As needed, confirm the option is available. Official who grants the timeout may need information before asking if the team wishes to advance.

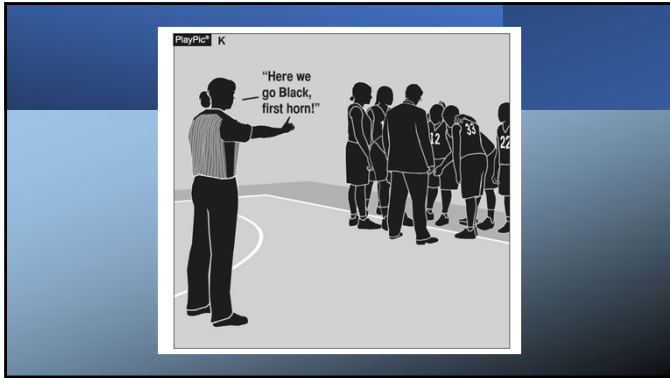
17

NCAA WOMEN'S BASKETBALL

Timeout resumption of play:

Whistle blast added to facilitate resumption of play from a timeout.

18



19

NCAA WOMEN'S BASKETBALL

Warning/Stop Sign:

Warning hand required to communicate warning visually.

20

D. Stop Sign/Warning Signal

The stop sign has two uses: stopping substitutes from entering the game too quickly and letting a coach, bench personnel or player know they have been warned. For handling a coach who is clearly and completely out of the coaching box or dealing with a dispute, the official shall use the stop sign signal to warn the coach or call a technical foul. When the warning signal is displayed the official will say, "Coach, this is your warning." Using the warning signal will provide visual proof that the offender was warned. If the misconduct continues and a technical foul follows you have visual proof (possibly on video) that the offender was warned. When a warning has been issued, it should be communicated to the entire crew. Behavioral and location warnings do not get recorded in the scorebook (PlayPic Q).

 An illustration of a basketball official in a striped shirt holding up their right hand with the palm facing forward, signaling a stop or warning. The scene is labeled "PlayPic Q" in the top left corner.

21

NCAA WOMEN'S BASKETBALL

Accurate statistics:

For reporting accuracy, the stat crew should also be informed of the type of foul reported.

22

NCAA WOMEN'S BASKETBALL

Conflict resolution:

- Use voice and whistle (multiple blasts).
- Discourage conflict.
- Direct players away.
- Recommended officials not touch players and coaches.

23

Conflict resolution worksheet:

24

Players in the game.

Player #	Fighting act?	Intentional?	Disqualifying?	Technical?

Player #	Fighting act?	Intentional?	Disqualifying?	Technical?

2 FTs for each who participated in the fight and ejected.

25

Substitutes.

Substitute #	Fighting act?	Disqualifying?	Technical?

Substitute #	Fighting act?	Disqualifying?	Technical?

2 FTs for each who left the substitute area and ejected.

26

Bench personnel.

Player # / Name	Fighting act?	Disqualifying?	Technical?

Player # / Name	Fighting act?	Disqualifying?	Technical?

2 FTs for each who committed fighting acts + 2 FTs max for multiple players leaving the bench area but did not fight. All ejected.

27

Mechanics
Changes and
Focus Areas

28

NCAA **WOMEN'S BASKETBALL**

Coverage Fundamentals:

- Proper court coverage.
- Primary/secondary coverage.
- Cadence in secondary.
- Proper signal sequence.
- Eye discipline.

29

NCAA **WOMEN'S BASKETBALL**

Court coverage types:

- Front court:
 - Basic coverage
 - Drives to the basket
 - Rebounding
- Backcourt/transition:
 - Press coverage
 - No press coverage

30



Court coverage keys:


- On ball & off ball responsibilities.
- Home position.
- Position adjustments.
- Open looks.

31



Legal Guarding

32

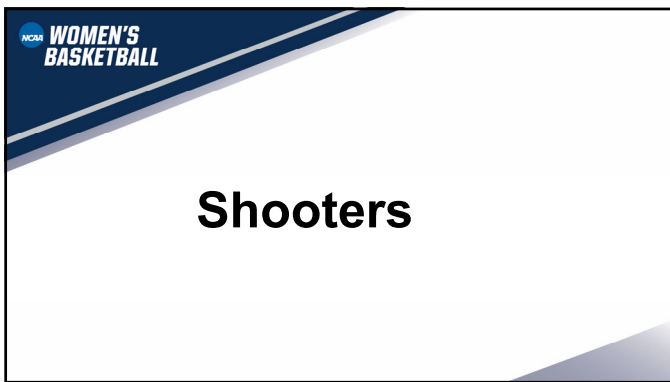


Screens

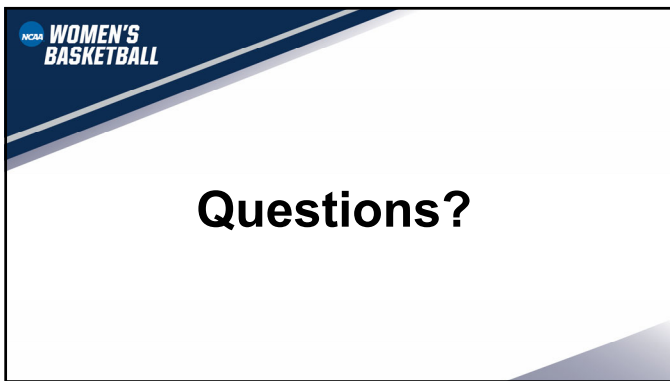
33



34



35



36
