



HANDBOOK

ABOUT NHL STREET



Positioned to be the premier ball hockey experience, NHL STREET provides kids and their families with the best of what youth sports can be: having fun, staying active, making friends, and creating great memories. Designed for kids ages 6 to 16, NHL STREET athletes feel like the pros when they suit up in authentic uniforms to play in high-energy, team-first leagues. Even more, longtime NHL-licensed equipment partner Franklin Sports™ has created an exclusive line of equipment for participants, including branded sticks, balls, and goalie equipment.

Bottom line: NHL STREET brings new style, energy, and gameplay to the sport. It offers families an affordable, fun, and positive youth sport experience, where kids can foster their love for the game and enjoy participating on a team. And as a league operator, you can consider this handbook your go-to guide for implementing a successful league this season—and every season.



- **Getting Started**
- **Rink Requirements**
- **Uniforms and Equipment Ordering**
- **Player Registration**
- **Coach and Referee Resources**
- **Marketing, Logo Usage, and Sponsorship**
- **Insurance Requirements**
- **Culture, Health, and Safety**
- **Appendix**

GETTING STARTED

The NHL developed a licensed model for ball hockey with the intention of scaling credible, affordable, and well-run programs throughout North America. By partnering with local youth sports operators—like yourself—we aim to create fun and positive experiences for children in your community.

To help implement NHL STREET leagues, the NHL is also partnering with RCX Sports, with the goal of bringing a fun, simple, and affordable play opportunity to the masses, while ensuring league operators feel valued and supported. Therefore, we're excited to provide tools and resources to our league operators, helping them start, maintain, and grow successful NHL STREET programs.

NHL STREET operators gain access to a suite of resources, assets, and support, including:

- Exclusive branded merchandise and uniforms
- Exclusive new NHL STREET hockey equipment from Franklin Sports™
- Curriculum, coaching, and officials support
- Access to technology (registration, scheduling, etc.)
- Access to MediaValet for branded marketing and promotional materials
- Support for insurance, background checks, etc.
- Inclusion in 'League finder' tool on NHLSTREET.com
- Connectivity to potential regional/national tournaments
- And much more

NHL STREET operators are expected to uphold the policies and standards established by NHL STREET, as detailed in the Recreation Organization Registration Contract, including:

- Adherence to NHL values and mission of the NHL STREET program
- Openness to storytelling opportunities
- Data sharing with RCX Sports for operational needs; data opt-in with NHL for marketing purposes
- Compliance with background checks and laws relating to youth
- NHL partnership integrations
- Commitment to designing a business model that works for the operator, while maintaining affordability for families
- Adherence to all rights, obligations, insurance, warranties, etc., within the Recreational Organization Agreement

GETTING STARTED

Who Can Start a League?

At NHL STREET, we're interested in working with operators who share our values and vision for the sporting experience, whether you're an operator running an existing ball hockey league or coming to the game for the first time.

How to Apply

All potential operators should fill out an interest request form online, letting us know they'd like to start a league or learn more. Then, an NHL STREET team member will contact you and set up a time to walk you through the application process and collect important information about your league. For example, all NHL STREET operators are required to complete a background check, sign an NHL STREET operator agreement, and submit their insurance policy information, meeting the minimums listed in the operator agreement. Our team will guide you through every step of this process, so you know exactly what you need.

Determining Your Budget

Determining your budget is an important first step when starting a league, especially with each league being able to set their own registration price. Before setting that price, you want to research market rates in your area and create a budget that takes all your costs into consideration. To ensure that NHL STREET is as accessible and inclusive as possible, the NHL and RCX Sports always ask league operators to provide at least one payment plan option to lessen the financial burden. Generally, we find that most leagues fall between a \$100 and \$150 per player registration fee.



RINK REQUIREMENTS

Here's a list of budget items to consider when determining your overhead costs – please keep in mind that these costs can vary greatly, depending on the league and location:

- **Facility rental** (practices & games) : Anywhere between \$25 and \$45 per player
- **Insurance:** \$3.70 per athlete in US, \$6.40 per athlete in Canada through RCX insurance offering
- **Background Checks:** \$12 for US, \$31 CA through RCX offering (additional fees may apply)
- **Referees:** \$20 per hour
- **Equipment:** Varies depending on league needs
- **NHL STREET Athlete Package:** - \$25 per player
- **Awards:** \$5 - \$9 per athlete
- **Marketing:** Flyers, social ads, yard signs, banners

Here's the great thing about street hockey—it can be played on many surfaces. It doesn't matter if you're outside or inside, at a tennis court or in a gym. As long as the playing surface is flat and smooth, you can set up shop. Here are some guidelines to help you find the right playing surface for your league.

Identifying the Proper Play Surface

The main focus when identifying a play surface should be ensuring the surface is (1) level, (2) as smooth as possible, and (3) clear of any debris. Minor cracks will not impact game play.

Acceptable play surfaces include but are not limited to:

- Concrete
- Blacktop/asphalt
- Sport court
- Tile
- Hardwood

For example, you may find potential venues at:

- Basketball courts – both indoor and outdoor
- Tennis courts – both indoor and outdoor
- Parking lots
- Existing ball/deck hockey rinks



A few select surfaces are NOT suitable for game play, including but not limited to:

- Grass
- Turf
- Ice
- Sand
- Any surface that has not been properly maintained could be considered dangerous in any way

If you have questions about the feasibility of a possible play surface, please contact a member of the League Success team for further guidance. Contact us by phone (470- 648-1630) or by email info@nhlstreet.com

RINK REQUIREMENTS

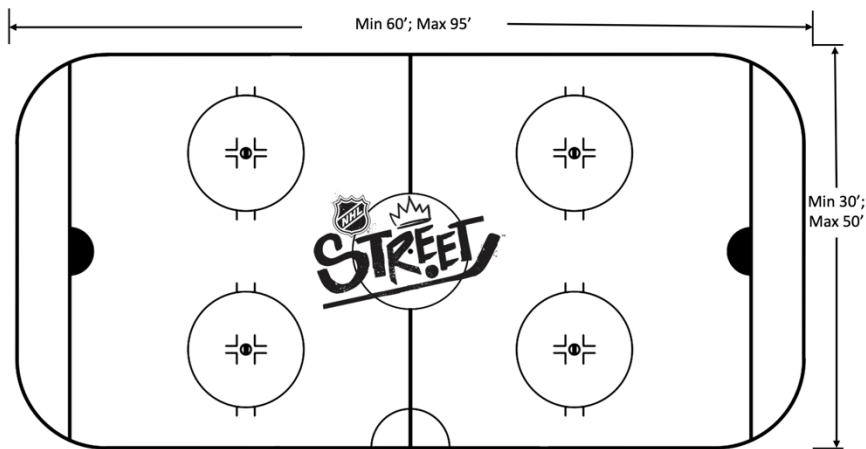
Rink Dimensions

When it comes to defining your rink dimensions, NHL STREET offers some flexibility. Playing 3 on 3? You probably want a smaller rink. Got a division with older aged kids? Maybe you need more space.

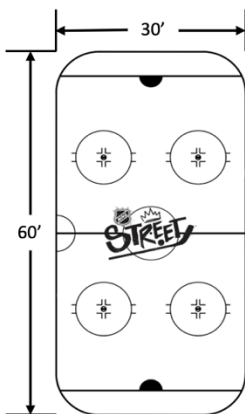
To help you find your best match, here are various rink dimensions, from smallest to largest:

MINIMUM: 60'x30': Slightly smaller than a tennis court

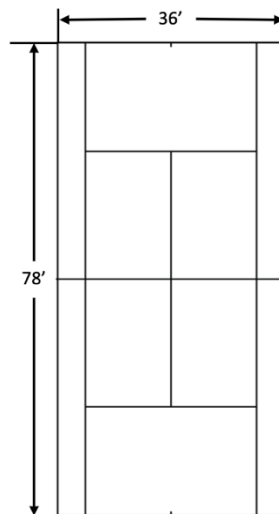
MAXIMUM: 95'x50': Roughly the size of a basketball court



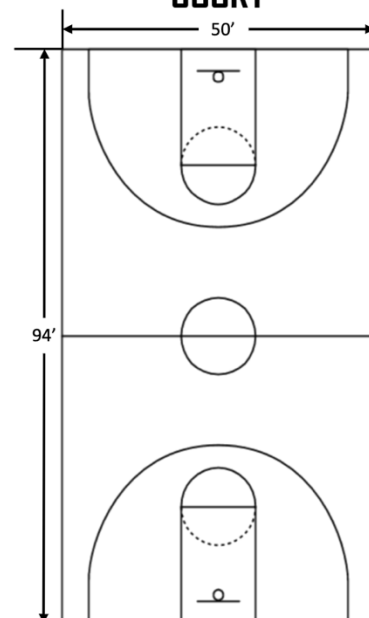
NHL STREET



TENNIS COURT



BASKETBALL COURT



RINK REQUIREMENTS

Building Your Rink

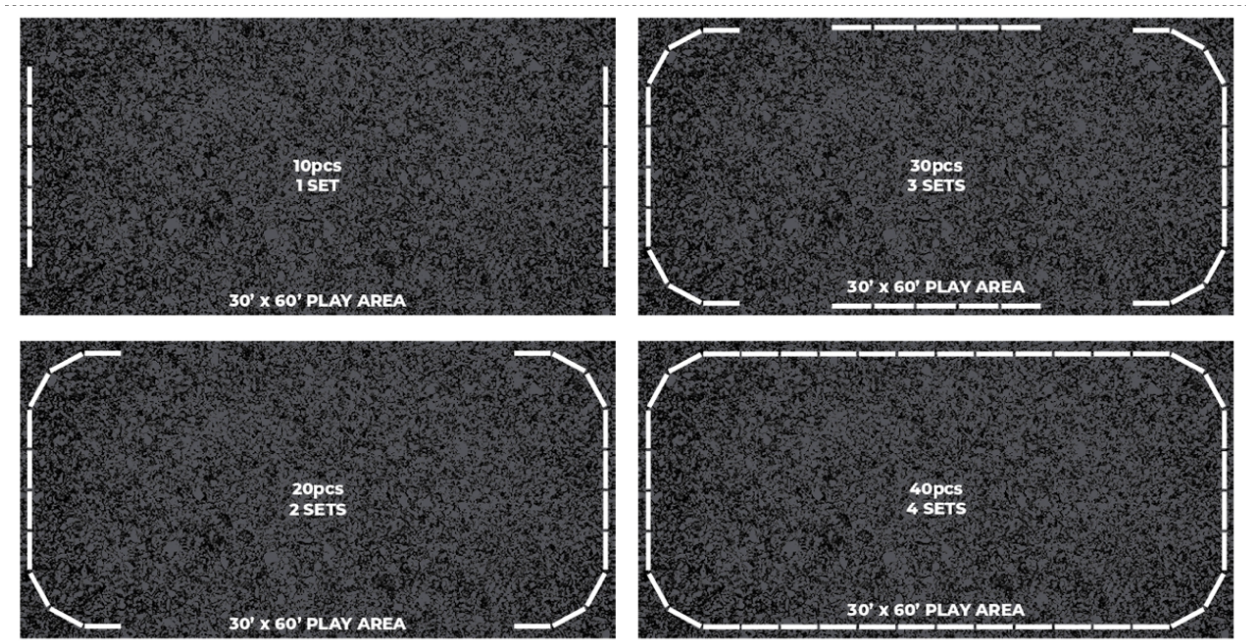
Now that you have your venue established, it's time to create your rink. In street hockey, the perimeter of the play surface is typically surrounded by dashers, which stops the ball from going out play. This keeps the game fast-paced and engaging.

Thanks to our partners at Franklin Sports™, we're proud to introduce the first ever mobile dasher system, designed specifically for NHL STREET.



Available in packs of 10 panels, these street dashers can be configured in any manner you choose to enhance game play. At a minimum, there must be a barrier or backstop located behind each goal. Additional dashers are at the discretion of the operator.

Sample dasher configurations are included below:



UNIFORMS AND EQUIPMENT ORDERING

Facility Requirements

The operator is responsible for securing and ensuring clean facilities and bathrooms, and access to water, for participants. Every facility must also have fire extinguishers and a readily accessible AED in the immediate vicinity of high-risk locations. Additionally, operators will be responsible for monitoring the behavior of spectators and capacity limitations within the facility.

NHL STREET's high-quality equipment and NHL-branded jerseys set us apart from other youth sports experiences. Among our offerings, you'll find required merchandise and experiential add-ons.

NHL STREET Basic Equipment

The following table includes required items an operator must have on hand in order to facilitate a league/single game and provide a successful experience for families. Whether you need a complete equipment setup or just a few items, NHL STREET can supply everything necessary to get your league up and running, thanks to our partners at Franklin Sports™.



ITEM NEEDED	QUANTITY NEEDED PER RINK
Nets	2
Goalie Protective Equipment	2
Goalie Stick	2
Goalie Mask	2
Balls	100
Sticks	20
Dashers/backstop – behind goals at a minimum	10

UNIFORMS AND EQUIPMENT ORDERING

Official Equipment Package

As part of the \$25 per player licensing fee, each league operator will receive an official equipment package that includes an NHL STREET reversible jersey featuring NHL team marks.

[Check out the entire catalog](#)

Additional Apparel and Equipment

League operators and participants will also have additional merchandise available for purchase.

Offering these items to your families is optional, including:

For the Operator:

- Goals
- Sticks
- Balls
- Dashers
- Goalie Equipment
- Goalie Helmets
- Goalie Sticks

For Participants:

- Sticks
- Balls
- Shorts

Paying for Equipment

All orders can be paid by credit/debit card or ACH bank transfers through your league operator account. Paying with credit/debit card or ACH bank transfers will submit your order immediately for fulfillment.

All major credit cards are accepted. Paying by ACH bank transfer will require you to complete a verification process in the admin setting of your account. This process entails submitting your bank account information and confirming the totals of small deposits made in your account. This is a process that can take 3-5 days to complete.

Approved nonprofit and Parks & Recreation programs are eligible to pay by check sent by mail but will be required to provide a purchase order before these orders are submitted for fulfillment. All pay by check orders will have net 30 payment terms. Prior approval is required to use this payment option. For approval to use the pay by check option, please email info@NHLSTREET.com



UNIFORMS AND EQUIPMENT ORDERING

If you are a sales tax-exempt organization, please email your state sales tax exemption certificate to info@NHLSTREET.com for approval prior to placing your order.

Timetables

We recommend placing all orders at least two (2) weeks prior to gameplay to account for processing, shipping, and auditing orders upon receipt.

All NHL STREET orders are fulfilled from the RCX Sports fulfillment center in Sylvian Lake, MI, and will ship via FedEx.

Bulk Order Processing Times

Ground Shipping

- Refer to [FedEx Ground Shipping Map](#) for timeline.
- Please allow up to two (2) business days for Bulk order processing on ground orders during peak seasons.

Expedited Shipping Options

- Cut off time for same-day processing and shipping of all bulk orders is 10 am EST for all orders placed with FedEx Standard Overnight and FedEx 2Day options. FedEx Standard Overnight and FedEx 2Day refer to business days.
- Orders of \$5,000+ will require an additional one (1) business day processing time and cannot be guaranteed to be processed and shipped on the same day.
- If a bulk order is needed for Friday delivery for games over the weekend, orders need to be placed before 10 am EST Thursday of that week with FedEx Standard Overnight selected.

Pack by Team Order Processing Times

We offer a 'Pack by Team' option for an additional \$2.50/participant. This means that all of your equipment and uniforms will be sorted and packaged by team, saving you the time of organizing it yourself.

All 'Pack by Team' orders require a 4-business day processing time. Same-day processing of Pack by Team orders cannot be offered. Expedited shipping options can still be added to any order at an additional cost, but the three (3) business day processing times still apply.

UNIFORMS AND EQUIPMENT ORDERING

Logistics

Once your order is placed and received by NHL STREET, you will receive an order confirmation with your order number and full order details. When your order has shipped, you will receive a second email with the tracking number listed. All orders can be tracked on www.fedex.com.

Checking Orders upon Arrival

Once your order is received, we recommend going through the entire order and comparing it to your order summary, prior to passing out jerseys to your coaches. This order summary is sent via email and also found on the “orders” page for your league on your NHL STREET Operator account.

Make sure to inventory every box.

If there are any issues with your order, please contact us at info@NHLSTREET.com or 1-773-569-3060 and reference your order number from the packing slip. Please alert our team of any missing or damaged boxes in transit.

Exchange Policy

*NHL STREET has a No Refund Policy on equipment orders. We understand that last-minute registration changes occur, and we're willing to help address these situations by offering a one-time (1) per-season exchange policy. ***

Details for exchange:

- \$25 exchange fee for restocking, processing, and shipping costs up to ten (10) items
- If exchanging more than ten (10) items, please complete and submit multiple forms as needed
- \$5 charge for each additional item exchanged
- A limit of 20% of the current season's order can be exchanged
- League operator is responsible for shipping costs back to NHL STREET
- Items can only be exchanged for items of matching value
- All items must be in new and unworn condition
- Exchange shipments will be processed once the original items have been received and checked in by the NHL STREET team
- Exchange shipments back to customers are shipped with Ground Shipping only,
- No express shipping options are available

UNIFORMS AND EQUIPMENT ORDERING

Shipping Returns and Payment Options

A template exchange form can be found in the Appendix of this operator handbook. Send all exchange requests to the following address:

RCX Sports Fulfillment Center
Attn: NHL STREET EXCHANGES
2240 Greer Blvd
Sylvan Lake, MI 48320

Registration should open 10 weeks in advance of the first league game via digital platform. Registration must include waivers, acknowledgment of data sharing, and minimum data points provided below. More information and detail on registration requirements can be found in your [MediaValet portal](#).

- | | | |
|----------------------|------------------------------|---|
| a. Player First Name | e. Jersey Size | i. Parent Last Name |
| b. Player Last Name | f. NHL Player Agreement | j. Email |
| c. Gender Identity | g. Race/Ethnicity (optional) | k. Zip Code |
| d. DOB | h. Parent First Name | l. Opt in for NHL
Information/Promotions |

In the registration process, operators should inquire if parents are interested in volunteering to coach or referee. The league operator is responsible for seeking volunteers to help coach as needed.

The preferred registration platform for NHL STREET is [Sports Connect](#), and includes a templated registration platform and custom branded website. We recommend utilizing this platform for ease of use and data sharing.

League operators will have the ability to add merchandise to their registration flow, which can create additional revenue streams for their league. NHL STREET representatives can provide more information upon request.

All operators will be required to upload the data listed above, and respond to some additional questions, prior to placing an order of merchandise or jerseys.

Establishing a Refund Policy

Each league should establish a refund policy and ensure parents are aware of the policy when they register. NHL STREET recommends offering full refunds to parents who wish to remove their child from the league before your registration closes. If they wish to leave the league after registration is closed and equipment has been ordered, we recommend offering a partial refund.

COACH AND REFEREE RESOURCES

Coach Resources

Coaches of all experience levels are welcome in NHL STREET. Basic training for coaches is available through NHLSTREET.com, providing volunteers with the tools they need to learn and manage a street hockey game.

While NHL STREET is focused on maximizing fun by encouraging low-pressure gameplay, we have practice plans and individual drills available, enabling coaches to enhance player skills and improve the gameplay experience.

Referee Resources

The role of an official or referee consists of 2 major functions:

1. Ensuring player safety
2. Game management/rule enforcement

Even though NHL STREET borrows heavily from traditional street hockey—with rules similar to ice hockey—it also has a variety of rules and procedures that are unique to the NHL gameplay model. That's why it's so important for new officials to be adequately trained and understand dynamics that contribute to player safety.

Training

All referees will be expected to review the [NHL STREET RULEBOOK](#) videos prior to league play. Training videos will be provided through the NHL STREET website, focusing on the following topics:

- Communication
- Identifying an infraction
- Positioning
- Penalty enforcement

Prior to working a game, and upon completion of the onboarding and training process, all officials are expected to know and understand the rules for gameplay.

Annual officials training clinics and seminars will be held to further the development of officials within the NHL STREET system.



MARKETING, LOGO USAGE, AND SPONSORSHIP

Logos

All league operators have permission to use these marks solely in relation to the organization and promotion of their NHL STREET program.

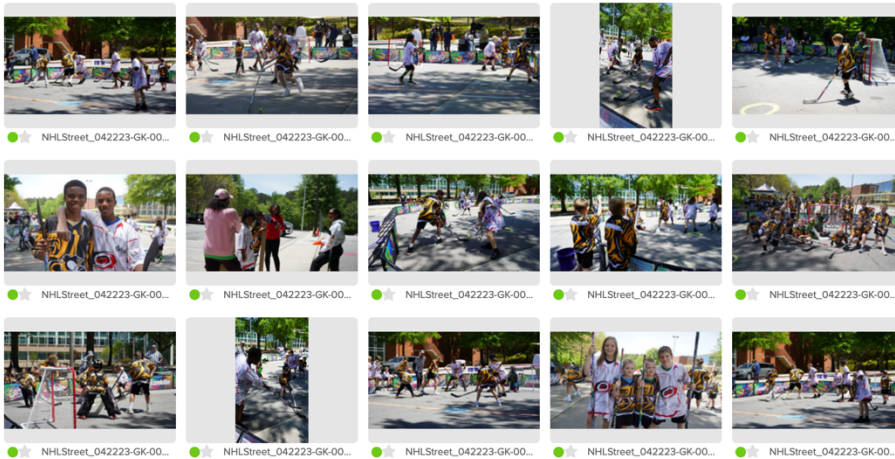
Full details can be found on [Marketing Hub - MediaValet](#).



Marketing

To help market your league, we offer various branded materials such as editable flyers and social images as well as professional stock photos and videos to help promote your new league.

Click to [Register for MediaValet](#) for full access



Sponsorship

The NHL reserves the exclusive right to engage with sponsors regarding NHL STREET. League operators do not have the right to sell sponsorships.

INSURANCE REQUIREMENTS

All NHL STREET leagues are required to strictly abide by the insurance obligations set forth in their NHL STREET Operator Agreement (“Operator Agreement”). This one-page summary is for informational purposes only; please consult the Operator Agreement for specific insurance requirements.

League operators must upload a copy of their Insurance Certificate to their NHL STREET Organizer account and have RCX Sports LLC and certain NHL entities (as further described below) added to their policy as an additional insured.

Your policy must include:

- Workers compensation insurance in compliance with the laws of the state where the services are

Employers’ Liability with minimum limits of:

- \$1,000,000 Each Accident
- \$1,000,000 Disease - Each Employee
- \$1,000,000 Disease- Policy Limit

Commercial General Liability Insurance

- \$1,000,000 Per Occurrence
- \$1,000,000 General Aggregate
- \$1,000,000 Products/Completed Operations Aggregate

\$1,000,000 Automobile Liability Insurance

to be provided, covering employees, volunteers, temporary workers, and leased workers including:
Your policy must also name ALL the following organizations as additional insureds, with no right of subrogation:

- RCX Sports LLC
- and its past, present and future affiliates and each of their respective predecessors, successors and assigns and each of their respective past, present and future, direct or indirect, owners, partners, principals, managers, members, shareholders, directors, officers, agents, trustees, employees, governors, attorneys and other representatives
- NHL Enterprises, Inc
- National Hockey League Enterprises Canada, Inc.
- the NHLECOs
- the NHL and each of its member clubs
- NHL Enterprises B.V.
- NHL Interactive CyberEnterprises, LLC
- any sponsors or partners of the foregoing
- and each of their respective past, present and future affiliates and each of their respective predecessors, successors and assigns and each of their respective past, present and future, direct or indirect, owners, partners, principals, managers, members, shareholders, directors, officers, agents, trustees, employees, governors, attorneys and other representatives

CULTURE, HEALTH, AND SAFETY

This address needs to go under the “Certificate Holder” section on your Certificate of Insurance as follows:

RCX Sports LLC
Attn: NHL STREET
250 Hembree Park Dr. Ste. 100
Roswell, GA 3006

Culture, Health, and Safety

NHL STREET leagues should foster a culture of respect and provide a positive and safe environment for all participants and athletes. We also require leagues to provide their teams, coaches, and any other personnel with best-in-class support, training, and resources to promote respect, inclusion, and safe play.

To promote best practices for player health and a safe environment for all participants, the following information covers Health & Safety policies and resources that provide a framework for an appropriate response to medical emergencies (including cardiac and mental health emergencies) and meet standards of care for athletic injuries.

Found in your [MediaValet](#) portal, these policies and resources are intended to allow each league to develop protocols that are specific to its own venue(s), resources, and local medical infrastructure, and as such are not intended as a clinical practice guideline or legal standard of care. Individual treatment and response to emergencies will depend on the facts and circumstances specific to each individual case.

- NHL STREET Cardiac Response Protocol
- NHL STREET Concussion Protocol
- NHL STREET Prohibited Conduct Policy
- NHL STREET Defining Adult Participants, Minor Athletes, Exceptions Policy
- NHL STREET One-on-One Interactions Policy

Templates for these policies and other resources can be found [HERE](#).

CULTURE, HEALTH, AND SAFETY

NHL STREET league operators, volunteers, referees, and all other staff members are required to complete background checks. Below are the specific background check policies and rules.

Background Check Policy

NHL STREET is committed to the safety of all individuals who participate in its programs or events, including without limitation minors and vulnerable adults. To help protect these individuals, we require each Recreation Organization to conduct background checks, including a criminal record check and, where appropriate, a vulnerable sector check (where permitted and in compliance with applicable law) on all coaches, staff, and other on or off-field representatives of Recreation Organization with access to NHL STREET participants. All background checks must be conducted using RCX and NHLECO's approved background check provider.

Policy Statement

I. Application

A. This policy applies to the following individuals (collectively, the "Subjects"):

1. Recreation Organization employees and individuals Recreation Organizations formally authorizes, approves or appoints to (a) serve in a position of authority over or (b) have regular contact with NHL STREET athletes.
2. Coaches, assistant coaches, referees, on or off field representative, or personal care assistants who are funded, have a contractual obligation with, or are credentialed by Recreation Organization, or otherwise have regular contact with NHL STREET athletes.
3. All other individuals listed in the NHL STREET Adult Participants, Minor Athletes, and Exceptions Policy as "Adult Participants."
4. All athletes and alternates, training partners, and guides age of majority or older who are selected by Recreation Organization to participate in NHL STREET Events. Individuals referenced in this subsection shall have 45 days after reaching the age of majority), to come into compliance with this background check policy. An "NHL STREET Event" is any NHL STREET sanctioned activity.
5. Other individuals who have regular contact with NHL STREET athletes, or who have one on one access to athletes, as determined by NHL STREET, in its discretion.

CULTURE, HEALTH, AND SAFETY

II. Timing:

- A. A criminal background check covering a Subject utilizing the background check components set forth in Section IV (“Background Check Search Components”) will be completed prior to the Subject’s participation in an NHL STREET Event. Thereafter, a criminal
- B. background check covering a Subject utilizing the Background Check Components will be conducted every two years for as long as that individual qualifies as a Subject.

III. Certification

- A. In connection with the Club’s annual registration with NHL STREET, NHL STREET requires the Recreation Organization to certify in writing that it is in compliance with the background check requirements of the Operator Agreement and all applicable federal, state, and local laws related to background checks.

IV. Background Check Search Components

- A. Social Security Number validation;
- B. Name and address history records;
- C. Federal prohibited person database;
- D. County Criminal Records for each name used and county where the individual currently lives or has lived during the past seven years, going back the length of time records are available and reportable for each county searched;
- E. All available state sex offender registries
- F. SafeSport Disciplinary Records;
- G. Comprehensive International Records search for individuals who have lived outside of the United States for six consecutive months in any one country, during the past seven years; and
- H. Professional License/Certification Verification for certain medical roles.

CULTURE, HEALTH, AND SAFETY

V. Screening Results.

A. **NHL STREET Background Checks:** Any criminal background check that is obtained pursuant to the terms of this Policy will report the findings of its search to the Recreational Organization based upon a “Red Light / Green Light” system.

- A “Green Light” or “meets the criteria” finding indicates that the background check did not identify criteria that would indicate that the individual is unsuitable for the intended role or activity.
- A “Red Light” or “does not meet the criteria” finding indicates that one or more of the below-listed criteria was flagged during the background screening process.

B. Unless otherwise prohibited by law, any of the following criteria appearing on a background check will result in a “Red Light” finding:

1. Any felony (any crime punishable by confinement of greater than one year).
2. Any lesser crime:
 - a. In which sexual misconduct is an element or of a sexual nature to include but not limited to; rape, child molestation, sexual battery, lewd conduct, possession and distribution of child pornography, possession and distribution of obscene material, prostitution, indecent exposure, public indecency, and any sex offender registrant, including “victimless” crimes of a sexual nature (including pornography);
 - b. Involving controlled substances or alcohol;
 - c. Involving harm to a minor, including, but not limited to, offenses such as child abandonment, child endangerment/neglect/abuse, contributing to the delinquency of a minor, and DUI with a minor;
 - d. Involving violence against a person (including crimes involving firearms and domestic violence);
 - e. Involving stalking, harassment, breaking and entering, trespassing, false impersonation, blackmail, violation of a protection order and/or threats;
 - f. destruction of property, including arson, vandalism, and criminal mischief;
 - g. any sex offender registration,
 - h. any violation noted in SafeSport’s centralized disciplinary database; or
 - i. animal abuse or neglect.

CULTURE, HEALTH, AND SAFETY

VI. Background Check Process.

- A. If a criminal background check results in a “Red Light” determination that is the result of a clerical or administrative error, the Subject will have an opportunity to challenge the correctness of the determination by contacting the applicable background check provider.
- B. Upon re-review, if the Subject still receives a “Red Light” determination as a result of one or more offenses or other matters noted in his/her background report, the Subject will be informed of the decision in writing.
- C. The Recreational Organization is responsible for individually reviewing each “Red Light” determination in accordance with applicable law and providing each Subject the opportunity to appeal the decision, to the extent required by law.
- D. Any appeals must be decided by the Recreational Organization, who may consider any or all of the following during the review process (to the extent permitted by law):
- How long ago the applicable offense/conviction occurred;
 - The severity of the offense/conviction;
 - Whether the offense is directly related to the Subject’s expected duties or role; and
 - Any other explanation or information provided by the Subject relevant to the offense.

NHL STREET Defining Adult Participants, Minor Athletes, Exceptions Policy

This policy uses the term “Adult Participants” to refer to those adults (age of majority and older) to whom these policies apply. Adult Participants are required to follow all policies included in the Athlete Safety Policy.

Adult Participants is defined as adult (age of majority and older) who is an NHL STREET:

1. Recreation Organization League Operator or NHL STREET Board Members, Officers, and Directors;
2. Recreation Organization League Operator or NHL STREET Employees and Independent Contractors;
3. Coaches and Trainers;
4. Team Managers and Club Administrators;
5. Recreation Organization League Operators and Administrators;
6. Tournament Directors;
7. Athletic Trainers;
8. Referees

CULTURE, HEALTH, AND SAFETY

This policy is issued to protect “Minor Athletes” who participate in NHL STREET. A Minor Athlete is an amateur athlete under the age of majority who participates in, or participated within the previous 12 months in, NHL STREET. Although this policy focuses in many areas on concerns unique to Minor Athletes, these may be applicable and are designed to protect participants of all ages.

Please note that a “Close in Age” Exception exists within the different components of this policy. This exception applies to certain policies and allows for “In-Program” contact between an Adult Participant and a Minor Athlete if:

- The Adult Participant has no authority over the Minor Athlete; and
- The Adult Participant is not more than four (4) years older than the Minor Athlete.

There are also exceptions for Adult Participant Personal Care Assistants (PCA) working with a Minor Athlete. A PCA is an individual who assists an athlete who requires help with the activities of daily living or in preparation for athletic participation. This support can be provided by a Guide for Blind or visually impaired athletes, or can include assistance with transfer, dressing, showering, medication administration, and using the restroom. When assisting a Minor Athlete PCAs must be authorized by the athlete’s parent/guardian. For a PCA to be considered an Adult Participant, the PCA must have Regular Contact with additional Minor Athlete(s) besides the Minor Athlete for whom they provide care. In these circumstances, the following requirements must be met before a PCA Exception will be granted:

1. The Minor Athlete’s parent/guardian must provide written consent to the NHL STREET Team or Recreation Organization League Operator for the PCA to provide care/work with their Minor Athlete; and
2. The PCA must complete all training required by NHL STREET; and
3. The PCA must meet all Background Check requirements of NHL STREET

Further, Adult Participants with a dual role or relationship with a minor creates an exception to certain policies set forth within this document. A “Dual Relationship” exception exists when:

- An Adult Participant has a dual role or relationship with a Minor Athlete. The exception requires written consent of the Minor Athlete’s parent/guardian at least annually.
- Many of the exceptions require parent/guardian consent.
- Examples of a dual role relationship can include, but is not limited to:
 1. Adult Participant who is a Parent/Guardian of a minor athlete;
 2. Adult Participant who is an Aunt/Uncle of a minor athlete; or
 3. Adult Participant who is a family friend of a minor athlete.

CULTURE, HEALTH, AND SAFETY

“In Program Contact” includes NHL STREET events and facilities (including travel and lodging), but it also applies more broadly to sport-related interactions, and is defined as:

- Any contact (including communications, interactions, or activities) between an Adult Participant and any Minor Athlete(s) related to participation in NHL STREET.

Examples of in-program contact include, but are not limited to: competition, practices, camps/clinics, training/instructional sessions, pre/post game meals or outings, team travel, review of game film, team- or sport-related relationship building activities, celebrations, award ceremonies, banquets, team- or sport-related fundraising or community service, sport education, or competition site visits.

NHL STREET One-On-One Interactions Policy

NHL STREET recognizes that youth-adult relationships can be healthy and valuable for development. Policies on one-on-one interactions protect children while allowing for these beneficial relationships. As child sexual abuse is often perpetrated in isolated, one-on-one situations, it is critical that organizations limit such interactions between youth and adults and implement programs that reduce the risk of sexual abuse.



One-On-One Interactions

Observable and Interruptible

All one-on-one In-Program Contact between an Adult Participant and a Minor Athlete must be observable and interruptible, except in emergency circumstances. The exceptions below may apply to specific policies, and if the exceptions apply, they are listed in the policy. These exceptions also apply to all one-on-one In-Program Contact not specifically addressed in other policies:

- When a Dual Relationship exists; or
- When the Close-in-Age Exception applies; or
- If a Minor Athlete needs an Adult Participant Personal Care Assistant, and:
 - (1) the Minor Athlete’s parent/guardian has provided written consent to the NHL STREET team for the Adult Participant Personal Care Assistant to work with the Minor Athlete; and
 - (2) the Adult Participant Personal Care Assistant has complied with NHL STREET’s required training; and
 - (3) the Adult Participant Personal Care Assistant has complied with NHL STREET’s background check policy; or

CULTURE, HEALTH, AND SAFETY

- In other circumstances specifically addressed in this policy that allow for certain one-on-one interactions if the applicable NHL STREET team or Recreation Organization League Operator receives parent/ guardian consent.

Meetings and Training Sessions

Observable and Interruptible

Adult Participants must follow the one-on-one interaction policy in all meetings and training sessions where Minor Athlete(s) are present.

Individual Training Sessions

One-on-one, In-Program, individual training sessions must be observable and interruptible except if:

- A Dual Relationship exists; or
- The Close-in-Age Exception applies; or
- If a Minor Athlete needs a Personal Care Assistant, and:
 - (1) the Minor Athlete's parent/guardian has provided written consent to the applicable NHL STREET team or Recreation Organization League Operator for the Adult Participant Personal Care Assistant to work with the Minor Athlete; and
 - (2) the Adult Participant Personal Care Assistant has complied with the NHL STREET's required training; and
 - (3) the Adult Participant Personal Care Assistant has complied with the NHL STREET's background check policy.

The Adult Participant providing the individual training session must receive advance, written consent from the Minor Athlete's parent/guardian at least annually, which can be withdrawn at any time; and parents/guardians must be allowed to observe the individual training session.

Meetings with Licensed Mental Health Care Professionals and Health Care Providers (Other Than Athletic Trainers)

If a licensed mental health care professional or licensed health care provider meets one-on-one with a Minor Athlete at an NHL STREET event or facility, which is partially or fully under NHL STREET's jurisdiction, the meeting must be observable and interruptible except:

- If the door remains unlocked; and
- Another adult is present at the facility and notified that a meeting is occurring, although the Minor Athlete's identity needs not be disclosed; and
- At least two other Adult Participants are notified that the provider will be meeting with a Minor Athlete; and
- The provider obtains consent consistent with applicable laws and ethical standards, which can be withdrawn at any time.

CULTURE, HEALTH, AND SAFETY

Athletic Training Modalities, Massages, and Rubdowns

Athletic Training Modality, Massage, or Rubdown

All In-Program athletic training modalities, massages, or rubdowns of a Minor Athlete must:

- Be observable and interruptible; and
- Have another Adult Participant physically present for the athletic training modality, massage, or rubdown; and
- Have documented consent as explained below; and
- Be performed with the Minor Athlete fully or partially clothed, ensuring that the breasts, buttocks, groin, or genitals are always covered; and
- Allow parents/guardians in the room as an observer, except for competition or training venues that limit credentialing.

Consent

Consent must be obtained from Minor Athletes' parents/guardians before providing any athletic training modalities, massages, or rubdowns. Minor Athletes or their parents/guardians can withdraw consent at any time.

CULTURE, HEALTH, AND SAFETY

Electronic Communications

Open and Transparent

All one-on-one electronic communications between an Adult Participant and a Minor Athlete must be Open and Transparent except:

- When a Dual Relationship exists; or
- When the Close-in-Age Exception applies.; or
- If a Minor Athlete needs a Personal Care Assistant, and:
 - (1) the Minor Athlete's parent/guardian has provided written consent to the applicable NHL STREET team or Recreation Organization League Operator for the Adult Participant Personal Care Assistant to work with the Minor Athlete; and
 - (2) the Adult Participant Personal Care Assistant has complied with the NHL STREET's required training; and
 - (3) the Adult Participant Personal Care Assistant has complied with NHL STREET's background check policy.

Open and Transparent means that the Adult Participant copies or includes the Minor Athlete's parent/guardian, another adult family member of the Minor Athlete, or another Adult Participant.

If a Minor Athlete communicates with the Adult Participant first, the Adult Participant must follow this policy if the Adult Participant responds.

Only platforms that allow for Open and Transparent communication may be used to communicate with Minor Athletes.

Team Communication

When an Adult Participant communicates electronically to the entire team or any number of Minor Athletes on the team, the Adult Participant must copy or include another Adult Participant or the Minor Athletes' parents/guardians.

Content

All electronic communication originating from an Adult Participant(s) to a Minor Athlete(s) must be professional in nature unless an aforementioned exception exists.

CULTURE, HEALTH, AND SAFETY

Requests to Discontinue

Parents/guardians may request in writing that their NHL STREET team, Recreation Organization League Operator, RCX Sports or an Adult Participant subject to this policy not contact their Minor Athlete through any form of electronic communication. Their NHL STREET team, Recreation Organization League Operator, RCX Sports and the Adult Participant must abide by any request to discontinue, absent emergency circumstances.

Transportation

Transportation

An Adult Participant cannot transport a Minor Athlete one-on-one during In-Program travel, except if:

- A Dual Relationship exists; or
- The Close-in-Age Exception applies; or
- If a Minor Athlete needs a Personal Care Assistant, and:
 - (1) the Minor Athlete's parent/guardian has provided written consent to the applicable NHL STREET team or Recreation Organization League Operator for the Adult Participant Personal Care Assistant to work with the Minor Athlete; and
 - (2) the Adult Participant Personal Care Assistant has complied with NHL STREET's required training; and
 - (3) the Adult Participant Personal Care Assistant has complied with the NHL STREET's background check policy; and
- The Adult Participant has advanced, written consent to transport the Minor Athlete one-on-one obtained at least annually from the Minor Athlete's parent/guardian.

Minor Athlete(s) or their parent/guardian can withdraw consent at any time.

An Adult Participant meets the In-Program transportation requirements if the Adult Participant is accompanied by another Adult Participant or at least two minors.

Written consent from a Minor Athlete's parent/guardian is required for all transportation at least annually.

CULTURE, HEALTH, AND SAFETY

Lodging

Hotel Rooms and Other Sleeping Arrangements

All In-Program Contact at a hotel or lodging site between an Adult Participant and a Minor Athlete must be observable and interruptible, and an Adult Participant cannot share a hotel room or otherwise sleep in the same room with a Minor Athlete(s), except if:

- A Dual Relationship Exists, and the Minor Athlete's parent/guardian has provided the applicable NHL STREET team or Recreation Organization League Operator with advance, written consent for the lodging arrangement.
- The Close-in-Age Exception applies, and the Minor Athlete's parent/guardian has provided the applicable NHL STREET team or Recreation Organization League Operator with advance, written consent for the lodging arrangement; or
- If a Minor Athlete needs a Personal Care Assistant, and:
 - (1) the Minor Athlete's parent/guardian has provided written consent to the applicable NHL STREET team or Recreation Organization League Operator for the Adult Participant Personal Care Assistant to work with the Minor Athlete; and
 - (2) the Adult Participant Personal Care Assistant has complied with the NHL STREET's required training; and
 - (3) the Adult Participant Personal Care Assistant has complied with the NHL STREET's background check policy.

Written consent from a Minor Athlete's parent/guardian must be obtained for all In-Program lodging at least annually.

CULTURE, HEALTH, AND SAFETY

NHL STREET Prohibited Conduct Policy

It should be noted that all NHL STREET players, coaches, referees, staff, volunteers, recreation organization league operators, on or off field representatives and attendees/spectators are subject to this Prohibited Conduct Policy. Prohibited behaviors include harassment, sexual harassment, racial, religious, or national origin harassment, child sex abuse, sexual misconduct, emotional misconduct, physical misconduct, bullying and hazing. All adult participants have an obligation to cooperate in any investigation of a complaint of misconduct, including providing all information concerning the complaint. Failure to do so may be a direct violation of this Prohibited Conduct Policy. Any violation of this Prohibited Conduct Policy may subject the individual to disciplinary action and NHL STREET prohibits any retaliation against individuals making good faith reports of misconduct, including potential violations of this Prohibited Conduct Policy.

1. **Harassment** - repeated and/or severe conduct that causes fear, humiliation or annoyance, offends or degrades, creates a hostile environment, or reflects discriminatory bias in an attempt to establish dominance, superiority or power over an individual or group based on age, race, ethnicity, culture, religion, national origin, or mental or physical disability; or any act or conduct described as harassment under federal or state law.
2. **Sexual Harassment** - any unwelcome sexual advance, request for sexual favors, or other unwanted conduct of a sexual nature, whether verbal, non-verbal, graphic, physical, or otherwise. Sexual harassment can also include harassment related to gender, sexual orientation, gender identity, or gender expression, which may include acts of aggression, intimidation, or hostility, whether verbal or non-verbal, graphic, physical, or otherwise, even if the acts do not involve conduct of a sexual nature.
3. **Racial, Religious or National Origin Harassment** - includes any verbal, written or physical act in which race, religion, or national origin is used or implied in a manner which makes a reasonable person uncomfortable in the environment. Examples include but are not limited to: jokes, which include reference to race, religion or national origin; the display of objects or pictures which adversely reflect on a person's race, religion or national origin; or use of pejorative or demeaning language regarding a person's race, religion or national origin.

CULTURE, HEALTH, AND SAFETY

4. **Child Sexual Abuse** - any sexual activity with a child is prohibited. This includes sexual contact with a child that is accomplished by deception, manipulation, force, or threat of force, regardless of the age of the participants, and all sexual interactions between an adult and a child, regardless of whether there is deception, or the child understands the sexual nature of the activity.
5. **Sexual Misconduct** - any sexual interaction between an athlete and an individual with evaluative, direct, or indirect authority is prohibited. Such relationships involve an imbalance of power and are likely to impair judgment or be exploitative. This section does not apply to a pre-existing relationship between two spouses or life partners.
6. **Emotional Misconduct** - a pattern of deliberate, non- contact behavior that has the potential to cause emotional or psychological harm to another person. Non-contact behaviors include verbal
7. acts, physical acts, or acts that deny attention or support; or any act or conduct described as emotional abuse or misconduct under federal or state law (e.g. child abuse, child neglect). Emotional misconduct does not include professionally accepted coaching methods of skill enhancement, physical conditioning, team building, appropriate discipline or improving athletic performance.
8. **Physical Misconduct** - is defined as contact or non-contact conduct that results in, or reasonably threatens to, cause physical harm to another person; or any act or conduct described as physical abuse or misconduct under federal or state law (e.g. child abuse, child neglect, assault). Physical misconduct does not include professionally accepted coaching methods of skill enhancement, physical conditioning, team building, appropriate discipline or improving athletic performance. For example, hitting and punching are well-regulated forms of contact in combat sports but have no place in hockey.
9. **Bullying** - intentional, persistent, and repeated pattern of committing or willfully tolerating physical and non- physical behaviors that are intended, or have the reasonable potential, to cause fear, humiliation or physical harm in an attempt to socially exclude, diminish or isolate the targeted athlete(s), as a condition of membership are prohibited. Bullying does not include professionally accepted group or team behaviors that (a) are meant to establish normative team behaviors, or (b) promote team cohesion.

CULTURE, HEALTH, AND SAFETY

10. **Hazing** - coercing, requiring, forcing, or willfully tolerating any humiliating, unwelcome or dangerous activity that serves as a condition for (a) joining a group, or (b) being socially accepted by a group's members are prohibited. Hazing does not include group or team activities that (a) are meant to establish normative team behaviors, or (b) promote team cohesion.

Compliance

If any team/coach/operator and/or staff are considered to be in violation of the details above, RCX Sports reserves the right to dismiss them from NHL STREET and prohibit further participation or affiliation with the NHL STREET program.

An incident report serves as a written account of a situation that has occurred. It provides a record of events that led up to an accident, as well as its immediate aftermath. Even more importantly, writing an incident report helps prevent the recurrence from happening again. Please use the following incident report in your league.

APPENDIX

Incident Report Form

The following form should be submitted to the league operator and kept on file whenever a violation of NHL STREET's _health and safety policies occur.

Incident Report		
Particulars of incident:		
Date:	Time:	Location:
Type of incident (please circle below):		
Injury	Illness	Environmental
Other:	Notifiable Event	Abuse
Reported by:		Phone:
Role in the event:		Email:
Relationship to the victim:		
The injured/abused person:		
Name:		Address:
Age:	Phone:	
Parent/Guardian Information (if a minor):		
Name:		Address:
Phone:	Other Parent/Guardian Name:	
The alleged abuser/offender		
Name:		Address:

APPENDIX

Age:	Phone:	Sex: M F
Witness(s):		
Name:	Phone :	Email:
Name:	Phone :	Email:
Name:	Phone :	Email:
Describe the incident:		
Describe any illness or injury: <i>What part of the body is affected and how?</i>		
Describe the nature and extent of injury/abuse: <i>What damage was caused and how?</i>		
Describe any property damage: <i>What damage was caused and how?</i>		
Analysis: <i>What do you think caused or contributed to the incident?</i>		

APPENDIX

Prevention: <i>What action has been taken to prevent a reoccurrence?</i>		
Have all preventative actions been reviewed and determined by Event Management, and implemented?		
	Yes	No
Signature:	Date completed:	
PLEASE FILL OUT IN THE EVENT OF ABUSE:		
Was there any indication of prior abuse/neglect? Explain.		
Circumstances under which you became aware of the abuse:		
Physical and/or behavioral indicators identified:		
Names/information of other children in the household:		
Name:	Age:	
Name:	Age:	
Name:	Age:	
Name:	Age:	