



A COMMUNITY OF SOCCER

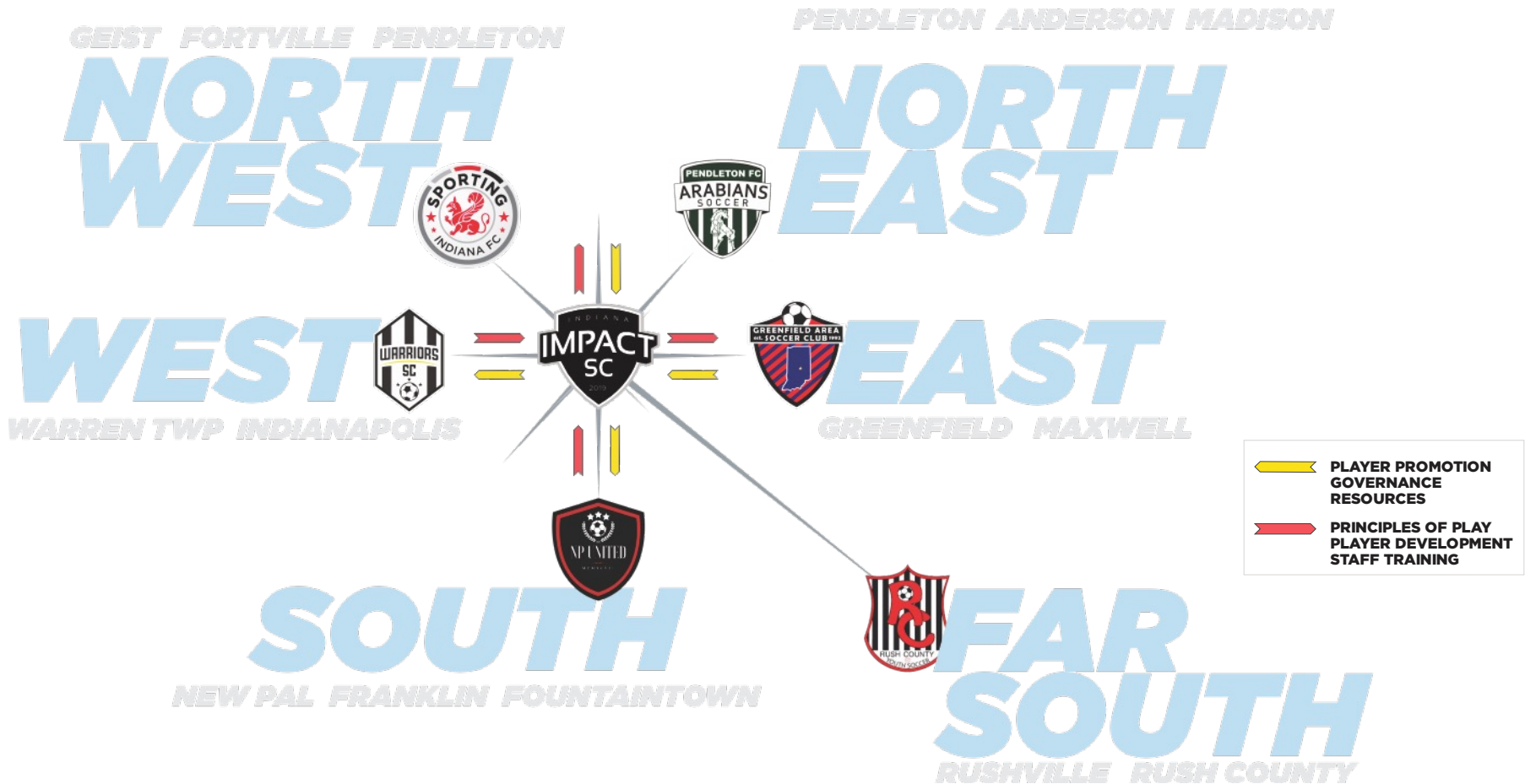
ANNUAL GENERAL MEETING



A COMMUNITY OF SOCCER

Together We Make An Impact.

WE WANT to compete with the best Clubs in the State, WE WANT to have homes for all players, WE WANT to group like-skilled players for a better competitive experience and development, WE WANT to grow soccer in our communities and have a bigger support group to best develop our players. The best way WE PROVIDE the best opportunities for our kids is together.





OUR MISSION

Impact Soccer Club is a player-first youth soccer club that helps the individual player reach their goals as well as the goals set by the program. Through education, skills development and club-cultural, we will inspire future leaders to meet the challenges of their world with optimism, creativity & excellence.



OUR VISION

To be recognized in our state as a premium soccer club known for developing highly-skilled and intelligent players as well as having quality coaches and caring community leaders in a positive and family-style culture..



OUR VALUES

Our values are bridging positive youth development and programs with the community. Our biggest values are found in our community involvement, school support and that we are inclusive in which “anyone can play”.

BOARD OF DIRECTORS

Voting and Officer Roles

Section 4.4 Nominations and Qualifications. *Nominations for election to At-Large Director positions shall be made by the Nominating Committee.*

Section 4.5 Election. *Election of a Director to fill the seat made vacant by the expiration of a predecessor At-Large Director's term is by a majority vote of Directors in office and present at the Annual Meeting at which such expiring term is to be filled.*

Section 4.6 Term of Office. *Unless the Board of Directors provide for a shorter term, At Large Directors shall serve for terms of three (3) years, such terms to begin at the close of the meeting following their appointment. Despite the expiration of an At-Large Director's term, the At-Large Director continues to serve until his or her successor is appointed.*

**IN NOVEMBER THE BOARD OF DIRECTORS APPOINTED
THE FOLLOWING DIRECTORS TO THESE OFFICER ROLES.**

CASEY DODD leaves BOARD of DIRECTORS

CARSON DRAKE joins BOARD of DIRECTORS

DAVE BENSON remains TREASURER

BOARD OF DIRECTORS



**BECKI
PRIGG**

CHAIR

FAVORITE TEAM:

Liverpool

PROFESSION:

Medical Staff Services
Manager Community
Health Network

PLAYING EXP:

Connersville HS
Earlham College

CLUB EXP:

Started Connersville
Rec Program

GASC since 2014

Licensed Referee

CLUB AFFLIATION:

Greenfield Area Soccer
QUOTE:

“None of us is as good
as the all of us.”

- Ray Kroc



**JIM
BRANDON**

VICE CHAIR

FAVORITE TEAM:

Liverpool

PROFESSION:

President of
Landmark DBM

PLAYING EXP:

GASL Adult

Crazy 8's

CLUB EXP:

Sporting Indiana FC
since 2014

CLUB AFFLIATION:

Sporting Indiana FC

QUOTE:

As the man once said,
“the harder you work,
the luckier you get.”

-Ted Lasso



**DAVE
BENSON**

TREASURER

FAVORITE TEAM:

Indy Eleven

PROFESSION:

IT Director for
Braunability

PLAYING EXP:

Youth Rec

GASL Adult

CLUB EXP:

Sporting Indiana FC
Geist Soccer

CLUB AFFLIATION:

Sporting Indiana FC

QUOTE:

“In youth sports the best
measure of success isn't
always in wins- it's how
many kids sign up to play
again next season.”



**CARSON
DRAKE**

SECRETARY

FAVORITE TEAM:

AFC Richmond

(Manchester City if you
want a real team)

PROFESSION:

VP Fraley & Shilling Inc.

PLAYING EXP:

High School Soccer

CLUB EXP:

Proud Parent

CLUB AFFLIATION:

Greenfield Soccer Club
Impact SC

QUOTE:

“Try not become a
person of success, but
rather try to become a
person of value.”

-Albert Einstein

ORGANIZATIONAL CHART

BOARD OF DIRECTORS

Becki Prigg, CHAIR
 Jim Brandon, VICE CHAIR
 Dave Benson, TREASURER
 Carson Drake, AT-LARGE

EXECUTIVE DIRECTOR

Chris "Fuzzy" Steeno

REC/RECPLUS PROGRAM



REC DIRECTOR

RECPLUS DIRECTOR

ADULT DIRECTOR

DIRECTOR of COACHING

Bobby Holden

DIRECTOR of OPERATIONS

Brandon Steeno

ACADEMY DIRECTOR

ACADEMY TECHNICAL DIRECTOR

ACADEMY COACHING STAFF

TECHNICAL DIRECTOR
Micah Gerike

TECHNICAL TRAINING STAFF

COLLEGE LIASON

EDUCATION

GK DIRECTOR
Todd Thompson

GK TRAINING STAFF

GK EDUCATION

BOYS DIRECTOR
Josh Wintin

JR BOYS COACHING STAFF

SR. BOYS COACHING STAFF

JR GIRLS DIRECTOR
Neal Singco

SR GIRLS DIRECTOR
Jennifer Myhre

JR. GIRLS COACHING STAFF

SR. GIRLS COACHING STAFF

REGISTRAR
Matt Mayhew

RISK MANAGEMENT
Brandon Steeno

FACILITIES MANAGER
Brandon Steeno

COMPLIANCE MANAGER
Brandon Steeno

TOURNEY MANAGER
Brandon Steeno
Angi Brandon

SUPER MANAGERS
Rachel Colclazier
Jennifer Swift

FINANCIAL DIRECTOR
Angi Brandon

COMMUNICATIONS DIRECTOR
Laura Rodebeck

IT MANAGER
Dave Benson

TOURNAMENTS/ EVENTS
Chris Steeno

SPONSORSHIP/ FUNDRAISING
Laura Rodebeck

5 PILLARS FOR SUCCESS



PLAYER-FIRST MISSION

Impact SC develops talent. Through soccer, academics and club-cultural, we will inspire future leaders to meet the challenges of their world with optimism, creativity and excellence.



NEXT-LEVEL MINDED PLAYERS

The Impact staff reaches from College to Middle School coaches giving the players tools to achieve next level success. These NLML focus on Middle School, High School and College Pathways as well as Coaching and Referee Pathway



CAPABLE COACHES

Impact is proud to have coaches from all levels. In addition to licensing, these coaches constantly search to evolve as coaches and trainers. The best way to do this is group education sessions creating a cohesive staff with a like-minded approach.



INTELLIGENT PLAYERS

Impact has put together a student-forward approach to soccer education. This means players are expected to learn the game as well as train for the game. Players will focus on various tactical methods, speed of play, play expectancy and field awareness.



MEMBER SERVICES

Impact creates a soccer culture that puts our players first, but be mindful that we are a soccer family. Our culture will nurture confidence in our parents through education, mindful communication, next level services, monetary aid and useful tools.



2 Adult Rec Leagues
(18U-older)
Internal Rec Leagues

2 Futsal Leagues
(6U-18U)
Internal Futsal Leagues

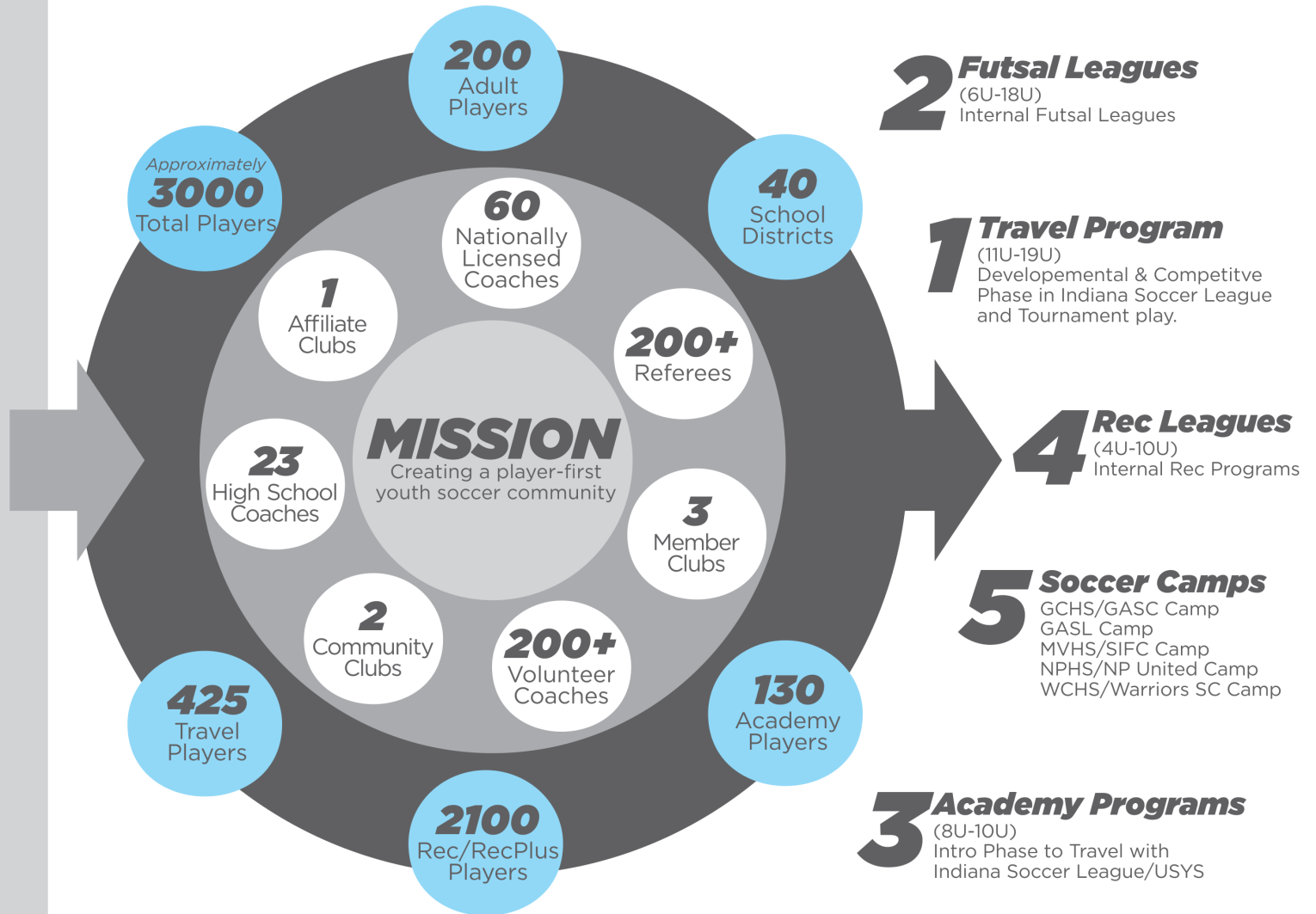
1 Travel Program
(11U-19U)
Developmental & Competitive
Phase in Indiana Soccer League
and Tournament play.

4 Rec Leagues
(4U-10U)
Internal Rec Programs

5 Soccer Camps
GCHS/GASC Camp
GASL Camp
MVHS/SIFC Camp
NPHS/NP United Camp
WCHS/Warriors SC Camp

3 Academy Programs
(8U-10U)
Intro Phase to Travel with
Indiana Soccer League/USYS

1 RecPlus League
(11U-19U)
6 Club RecPlus League



WHAT IS PLAYER FIRST?



LOVE OR LEARN

Player first means coaches look at ‘what is in front of them’. What level of team, what age, do they need to learn to love the game OR are they ready to learn the game?



PAIRING LIKE LEVEL PLAYERS

This create the most competitive teams, however we will never sacrifice development to win. Things like equal playing time, reality based training and a positive culture are our high priorities for kids to develop.



HEALTHY COMPETITION

Once kids reach the competitive level, when they are 15U through 19U, we create healthy environments for kids to compete internally, against an opponent as well as a higher level of expectation & accountability.



LIFE LESSONS

These are also great life lessons for players to carry them for a lifetime on the field and off the field.

LEVELS OF PLAY EXPECTATIONS



WHAT IS A TRAP PLAYER?

In 2022: A 2008 player in 8th Grade

A "Trapped Player" is any eighth grader who is a member of a U15 team, which typically consists of 9th graders. The player is called a "trapped" player because U15 club teams do not have a fall season, due to the fact that most players on a U15 team play high school soccer their freshman year.

LEVELS OF PLAY/ISL DIVISION

From Premier to 4th Division, 9v9 2nd Division to NPL or NL

Our Directors and Coaches ensure that all teams are challenged and are placed in the appropriate division or league based on that teams level of play.



CUP vs. TOURNEYS vs. SHOWCASES

State Cup Play

Appropriate Level Tourneys

College Pathway/Exposure Showcases

DEVELOPMENT

VEO CAMERAS

The complete solution for recording, coaching, and analysis



SKILLS SCHOOL GK SCHOOL



REFEREE COURSES

We are hosting licensing at MVHS & Realife Sports Complex



COACHES EDUCATION

USSF, United Soccer Coaches & the USC Convention



COLLEGE PATHWAY/GRADE 13

What is your next level?



COMMUNITY SUPPORT



WANT TO HELP AT THE CLUB?

Volunteering to help at events, painting fields, behind the scenes?

Contact us DIRECTORS@IndianalImpactSC.com



WANT TO COACH?

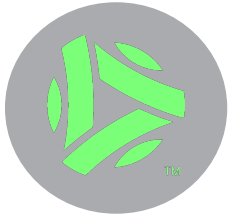
Parents or Alumni Get Into Coaching. Contact us DIRECTORS@IndianalImpactSC.com



WANT TO REFEREE?

Parents or Alumni Get into Refereeing. Contact us DIRECTORS@IndianalImpactSC.com

PARENT SUPPORT



PLAYMETRICS

Using the important tools provided by the Club.

- **Communication (Notifications, schedules, etc)**
- **Questions or concerns (Coaches, Directors)**
-  **PLAYMETRICS™**



PARENT RESOURCES

In addition to Coaches or Team Managers support, you can find all Parent Resources on the website.

IndianImpactSC.com/Resources > Parents



CULTURE



Sideline Behavior

Are you setting a good example?



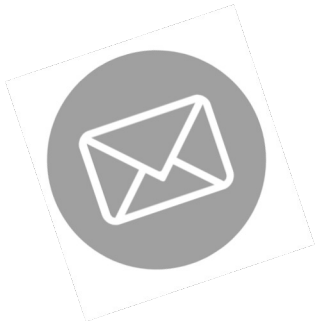
Soccer Parenting Campaigns

Please utilize the SoccerParenting.com resources found on our website under Parent Resources.



Social Media

Do you follow us? Send us pics to show-off our players and teams! Mailbox@IndianaImpactSC.com. #ALLin



Newsletter content

Hopefully you read the monthly newsletter that we send out to our Membership.

WHAT'S NEW?



SOGILITY PARTNERSHIP

CUTTING EDGE SUPPLEMENTAL TRAINING

This partnership allows Impact SC to offer this training using cutting edge technology at their state-of-the-art facility. Enhance your soccer skills and physical development while building confidence through our world-class technology and individualized data monitoring. Sogility.net



SHEER TRAINING PARTNERSHIP

NEXT LEVEL ATHLETES

Adding a licensed fitness trainer to Impact SC will help us put a higher focus on health, strength, endurance, and athleticism. Not only are we wanting players to learn how to develop into great athletes, we want them to be educated on recovery and healthy habit away from the pitch. sheertraining.com



TOP SOCCER

GASC LEADS THE OP SOCCER PROGRAM

We are very pleased to be able to host soccer at Brandywine for the players with special needs. Greenfieldsoccer.org



COLLEGE PATHWAY

PREPARING PLAYERS FOR THE NEXT LEVEL

Coach Jennifer Myhre is our new College Pathway Director. As a college coach, she has a unique insight on how to navigate preparing for college.



CENTRAL HOME FIELDS

NEW HOME FIELDS

This opportunity will allow for Impact SC to host a central location to allow accessibility for all our players. This project will be phased out with over 10-12 full-sided fields, a concession and storage building and opportunities to add an indoor facility and showcase turf field(s). [More to come...](#)



INDOOR PLANS

A HOME FOR INDOOR TRAINING & LEAGUES

We are working on creating better indoor fields for Winter Training and league opportunities. We are working with a realtor to find the best location to suit our club needs. [More to come....](#)

WHAT'S NEW?

CAPITAL PROJECTS PROCESS

PRIORITIZE

Take the list presented by the Executive Director and find out which option is most needed.

PLAN

We will then find developers and vendors to best help us achieve the venue we need and create the best plan.

FUNDRAISE

We will partner with an approved fundraising vendor in order to raise funds for our project in addition to the funds raised through sponsorships.

BUILD

Once we raise the funds needed, we will complete the project.

WHAT'S NEW?



HOST: Coach Jennifer Myhre, Imact SC College Pathway Director, Anderson University Women's Head Coach

What this event is for:

Join us to learn more about the College Search Process. Hear from college coaches and an NCAA rep on how to be the most efficient and effective with your search process.

What should they bring: None

Are Parents Allowed to Attend: Yes

Honored Guest Coaches:

IU East Women - NAIA
Earlham Women's - D3
Anderson Men's - D3
IUPUI Women's Assistant - D1



COLLEGE INFO NIGHT

DAY:
Wednesday

DATE:
February 21st, 2024

WHERE:
Realife Sports Complex

WHEN:
@ 7:00pm - 8:00pm

WHO:
05-08 Boys & Girls

RSVP:
Playmetrics Calendar





WE ARE TAKING THE CLUB BACK TO EUROPE

EUROPE in MARCH 2025

SPAIN TRIP - email

CoachBobbyHolden@IndianaImpactSC.com

OPEN TO ALL IMPACT PLAYERS



A COMMUNITY OF SOCCER

ANNUAL GENERAL MEETING

A soccer ball with a black and white pixelated pattern is resting on a grassy field. The ball is positioned to the left of the main text.

**THANK YOU
FOR ATTENDING!**