

WIAA SOCCER RULES CLINIC

2016-17

RULES CLINIC PROCEDURE

The 2016-17 Soccer Rules Clinic is comprised of five (5) lessons:

1. Sports Information
2. Soccer Rules
3. WIAA Rule Modifications
4. WIAA Game Management Modifications
5. Additional Information

At the end of the clinic you will need to successfully complete the FINAL EXAM to finish the clinic. After you have passed the FINAL EXAM you will be able to print a certification document for this clinic. Please keep a copy for yourself and give one to your Athletic Director.

SOCCKER RULES

2016-17 Soccer Rules Clinic

SOCCER RULES

The WIAA follows the FIFA “Laws of the Game”. The WIAA is the sole and exclusive source of binding rules interpretations for contests involving its member schools. Any person having questions about the interpretation of soccer rules should contact:

BRIAN SMITH

WIAA Soccer Rules Interpreter

(425) 282-5242 | bsmith@wiaa.com bsmith@wiaa.com

Thank you to the following individuals for their help in the development of this clinic:

Deb Brock



SOCCER RULES

A combination of NFHS and FIFA rules will apply. NFHS and WIAA rules will apply for game management; FIFA rules will apply during the contest.

Rationale:

The FIFA rules are utilized by all other soccer associations in Washington and will create a continuity between the club games and scholastic games officiated.

All safety precautions have been included in the WIAA modifications which be will part of the officials training.

The FIFA “Laws of the Game” and WIAA modifications can be found on the WIAA soccer website.

SOCCER RULES



The most comprehensive revision to the *Laws of the Game* in history was approved by the International Football Association Board (IFAB) during its 130th Annual General Meeting held in Cardiff, Wales, on March 5. Every Law except Law 2 (The Ball) has multiple changes.

We will cover the cover the Laws in which will have the most effect on education based soccer.

SOCCER RULES



Law 8 – The Start and Restart of Play

Kickoff (8.1 p. 65). The kickoff now can be taken in any direction.

Dropped ball (8.2 p. 66). A dropped ball kicked into a goal can only count if at least two players have touched the ball. The referee cannot decide who may participate or the outcome of the dropped ball. Any number of players may contest a dropped ball (including the goalkeeper).

Restarts (p. 65). All restarts are now included in this section of the Laws. Previously only kickoffs and dropped balls were mentioned. Law 8 now explicitly states that when an infraction occurs while the ball is not in play, the restart does not change

SOCCER RULES

Law 11 – Offside

Infringement (11.4 p. 79). Law 11 now defines an offside infraction to occur when the second part of the offense — the player in an offside position becomes involved in active play — occurs.

The indirect free kick will be taken from the location where the infraction (involvement) occurs — could be in the player's own half.

When a defending or attacking player leaves the field without permission, that player is considered to be on the goal line or touchline until the defending team clears the ball away from its penalty area toward the halfway line.

If a goal is scored, an attacking player in the goal can be penalized for offside.

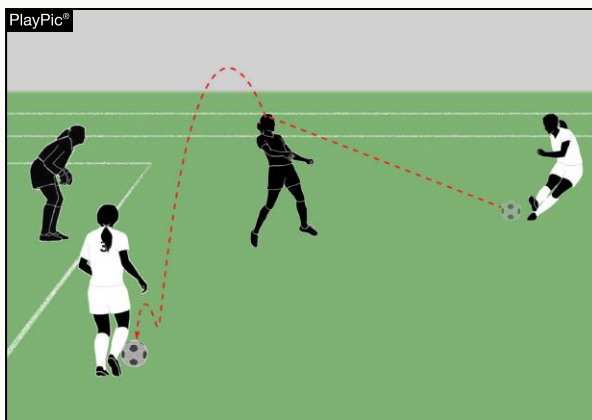
SOCCER RULES

A player is offside and penalized if, at the time the ball touches or is played by a teammate, the player is involved in active play and interferes with play or with an opponent or seeks to gain an advantage by being in that position.

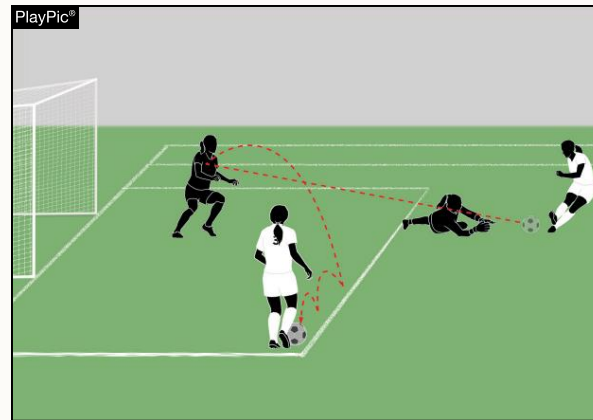
A player in an offside position receiving the ball from an opponent, who deliberately plays the ball (except from a deliberate save), is not considered to have gained an advantage.

SOCCER RULES

The new interpretation allows a player to receive a ball from an opponent's deliberate play (except from a deliberate save), without being considered offside.



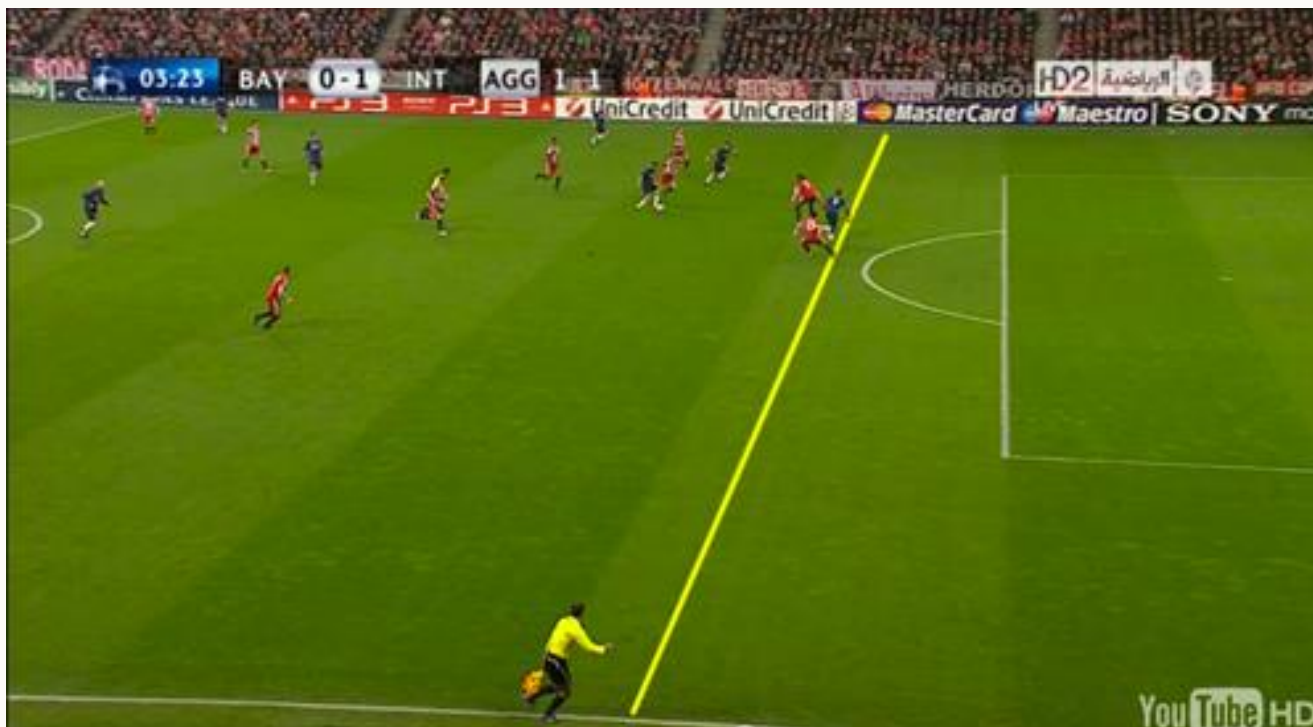
Legal – Pass is off a deliberate play



Illegal – Ball is received from a deliberate save

SOCCER RULES

Position (11.1 p. 77). The halfway line is not considered in the opponents' half. Arms of all players (including goalkeepers) are not used to judge offside position.



SOCCER RULES

Law 12 – Fouls and Misconduct

Disciplinary action. Denying a goal or an obvious goal-scoring opportunity (DOGSO) no longer automatically results in a red card.

A player should only be cautioned if there is a DOGSO foul in the penalty area (i.e. results in a penalty kick being awarded) and the foul is judged by the referee to be an honest attempt to tackle the ball.

However, if the offense involves holding, pulling, pushing, or an infraction with no attempt to play the ball, the player should be sent off. Of course, if the offense would have resulted in a send off on its own merits (serious foul play or violent conduct), the player is still sent off.

Finally, any DOGSO by deliberate handling of the ball is still a send off, regardless of where on the field the infraction occurs.

SOCCER RULES



Law 12 – Fouls and Misconduct

Advantage should not be applied when serious foul play, violent conduct or a second cautionable offense occurs unless a clear scoring opportunity is present. If the infringing player subsequently plays the ball, challenges or interferes with an opponent during that advantage period, play should be stopped, the player sent off and play restarted with an indirect free kick.

SOCCER RULES

Law 12 – Fouls and Misconduct

A caution for handling now occurs when it prevents a promising attack.

Any attempted violent conduct is a red card, even without contact.

Striking a player on the head or face when not challenging an opponent is a red card unless the contact is minimal/negligible.

SOCCER RULES



Law 12 – Fouls and Misconduct

Impeding with contact became the 11th direct free kick offense.

One of the 10 original direct free kick offenses has been changed from “tackles” to “tackles or challenges” an opponent. That addresses situations where a dangerous attempt to tackle the ball is made without contact.

SOCCER RULES

Law 12 – Fouls and Misconduct

Direct and indirect free kicks (12.1 and 12.2 p. 81-82). Direct, indirect and penalty kicks can only be awarded for offenses and infringements when the ball is in play. Any foul that involves contact is a direct free kick.

Restarts (12.4 p. 88-89). When the ball is in play and an offense is committed on the field against a teammate, substitute, substituted player, team official or an official, a direct free kick or penalty kick should restart play. When a foul off the field occurs as part of normal play, the restart will be a direct free kick on the boundary line nearest the offense (a penalty kick if in the offender's own penalty area).

SOCCER RULES



Law 14 – The Penalty Kick

Procedure (14.1 p. 95). The Laws now define the ball must be stationary and the ball is in play when it is kicked and *clearly* moves. A penalty kick in extended time or during KFTM is complete when the ball stops moving, goes out of play or the referee stops play for an infringement.

SOCCER RULES



Law 14 - The Penalty Kick

Infringements (14.2 p. 96). An indirect free kick should restart play no matter the result of the penalty kick when: the ball is kicked backward, a teammate of the identified kicker takes the kick (that player should be cautioned) or feinting occurs after the run-up to the ball has been completed (a caution to the player).

When the goalkeeper infringes and the kick is missed or has to be retaken the goalkeeper should be cautioned.

SOCCER RULES

Law 13 – Free Kicks

Infringements (13.3 p. 93). An opponent who deliberately prevents a quick free kick must be cautioned for delaying the restart.

Law 15 – The Throw-in

Infringements (15.2 p. 100). When an opponent distracts or impedes (including moving closer than two yards) the thrower, a caution should be shown. If the throw-in has been taken, the restart is an indirect free kick.

WIAA RULE MODIFICATIONS

2016-17 Soccer Rules Clinic

WIAA MODIFICATIONS



Law 1: The Field of Play

Field Conditions

Up until the moment the game begins, it is the responsibility of the host school or game management to judge whether or not the condition of the field, the elements and other conditions affecting the safety of the field of play allow for a safe game to begin. Once the game begins, and until it ends, the determination of whether or not a game may be safely continued shall be made by the referee.

WIAA MODIFICATIONS

Law 1: The Field of Play

Lightning Guidelines

When thunder is heard, or a cloud-to-ground lightning bolt is seen, the thunderstorm is close enough to strike your location with lightning. Suspend play and take shelter immediately. Once play has been suspended, wait at least 30 minutes after the last thunder is heard or flash of lightning is witnessed prior to resuming play. Any subsequent thunder or lightning after the beginning of the 30-minute count must reset the clock and another 30-minute count should begin.

WIAA MODIFICATIONS



Law 1: The Field of Play

Electronic Communication Devices

The use of electronic communication devices is allowed in the bench area. These devices, however, cannot be used to communicate with athletes on the field during the game.

WIAA MODIFICATIONS



Law 1: The Field of Play

Electronic Communication Devices

An ejected coach may not use an electronic device to communicate to coaches or aid in coaching during the suspension period.

WIAA MODIFICATIONS



Law 3:

The Number of Players

Substitutions

With the permission of the referee, either team may substitute an unlimited number of players at any stoppage. Substitutes shall wear distinguishing bibs/pinnies at all times.

WIAA MODIFICATIONS

Law 3: Concussion Rule

Coaches:

1. Shall educate their athletes on the signs and symptoms of concussion and encourage athletes to notify a coach if they or a teammate exhibits those signs or symptoms.
2. Shall immediately remove from participation/competition any athlete who is suspected of sustaining a concussion or head injury.
3. Shall not allow an athlete who has been removed from play because of a suspected concussion/brain injury to return to play until the athlete has received written clearance from a licensed health care provider trained in the evaluation and management of brain injuries.

WIAA MODIFICATIONS

Law 3:

Blood Rule

An athlete who is bleeding, has an open wound, has any amount of blood on his/her uniform, or has blood on his/her person, shall be directed to leave the field until the bleeding has stopped, the wound is covered, the uniform and/or body is appropriately cleaned, and/or the uniform is changed before returning to competition. That player shall leave the field and may be replaced.

WIAA MODIFICATIONS

Law 3:

Heat Acclimatization and Safety Priorities

Recognize that Exertional Heatstroke (EHS) is the leading preventable cause of death among high school athletes.

Know the importance of a formal pre-season heat acclimatization plan.

Know the importance of having and implementing a specific hydration plan, keeping your athletes well-hydrated, and encouraging and providing ample opportunities for regular fluid replacement.

Know the importance of appropriately modifying activities in relation to the environmental heat stress and contributing individual risk factors (e.g., illness, obesity) to keep your athletes safe and performing well.

Know the importance for all members of the coaching staff to closely monitor all athletes during practice and training in the heat, and recognize the signs and symptoms of developing heat illnesses.

Know the importance of, and resources for, establishing an emergency action plan and promptly implementing it in case of suspected EHS or other medical emergency.

WIAA MODIFICATIONS



Law 4: The Players' Equipment

Coaches' Responsibility

Each head coach shall be responsible for ensuring that each of his/her players is properly and legally equipped. The head coach shall receive the first caution issued for an illegally equipped player. All subsequent cautions for illegally equipped player(s) shall be issued directly to the player(s) and not the head coach.

WIAA MODIFICATIONS

Law 7: The Duration of the Match

Length of Periods

The match lasts two equal periods of 40 minutes. The WIAA recommends that middle level schools play two equal periods of 30 minute halves or four equal quarters of 15 minutes (league rule).

Periods may be shortened if mutually agreed upon or in any emergency, by agreement of the coaches or ordered by the referee, provided it is **determined to shorten** the periods before the game or before the second period.

WIAA MODIFICATIONS

Law 7: The Duration of the Match

The referee is responsible for keeping the time of the game. If the field site has a clock, it shall be run to 2:00 or 38:00 then official time will be utilized which includes stoppage time kept on field. The referee will indicate to both coaches how much time remains.

WIAA MODIFICATIONS

Law 7: The Duration of the Match

In the event a game must be suspended because of conditions which make it impossible to continue play, the referee shall declare it an official game if one complete half or more of the game has been played. If less than one-half of the game has been played, the game may be rescheduled from the start, or restarted from the suspension of play according to league rules.

WIAA MODIFICATIONS

Law 7: The Duration of the Match

Intervals Between Periods

The halftime interval shall be 10 minutes unless opposing school administrators mutually agree to a different length.

WIAA MODIFICATIONS



Law 7: The Duration of the Match

Tie Games

State Tournament Games:

After a 5 minute break at the conclusion of play, two (2) golden goal five (5) minute overtime periods will be utilized. If still tied, kicks from the mark will decide the result of the match. Only players on the field at the conclusion of the last overtime period can be used for kicks from the mark.

WIAA MODIFICATIONS

Law 12: Fouls and Misconduct

Player Send Off

A player, substitute or substituted player who has been shown a red card may remain in the team area.

WIAA MODIFICATIONS

Law 12: Fouls and Misconduct

Coach / Adult Bench Personnel

A coach or other adult bench personnel, who has been cautioned, should be shown a yellow card.

A coach or other adult bench personnel who has been shown a red card must leave the vicinity of the playing area immediately and may not have contact, direct or indirect, with the team during the remainder of the game. Failure to comply shall result in termination of the game.

WIAA MODIFICATIONS

In boys soccer, an athlete or coach that receives a red card for Violent Conduct or Abusive Language receives a three game suspension.

The suspension period includes the next three games in that sport at the same level of competition from which the person was ejected.

Please model and have expectations that include behaviors that are education based appropriate. Abusive Language and Violent Conduct do not belong in this game. Please do not put officials in a position to remove players and coaches for these reasons. It is the coaches responsibility to act and teach appropriate behaviors.

WIAA SOCCER RULES CLINIC

Violent Conduct:

"The commission of a violent act against an opponent, an official, a spectator, teammate or other individuals when the ball is in or out of play."

A player is guilty of violent conduct if he/she uses excessive force or brutality against an opponent when not challenging for the ball.

He/she is also guilty of violent conduct if he/she uses excessive force or brutality against a team-mate, spectator, match official or any other person.

Violent conduct may occur either on the field of play or outside its boundaries, whether the ball is in play or not.

WIAA MODIFICATIONS

Abusive Language:

Abusive language or profanity directed towards another individual (opponent, referee, spectator or teammate).

The determination as to whether or not foul language is an ejection, or incidental resulting in a caution is left to the judgment of the official.

QUIZ 1

QUIZ 1

WIAA GAME MANAGEMENT MODIFICATIONS

2016-17 Soccer Rules Clinic

WIAA MODIFICATIONS

Appendix - Law 4: The Players' Equipment

The required player equipment includes a jersey, shorts, socks, suitable shoes and shin guards which shall provide adequate and reasonable protection, be professionally manufactured, age- and size-appropriate, not altered to decrease protection, worn under the socks, and are worn with the bottom edge no higher than 2 inches above the ankle.

WIAA MODIFICATIONS



Appendix - Law 4: The Players' Equipment

Shin guards must meet the National Operating Committee on Standards for Athletic Equipment (NOCSAE) specifications. The NOCSAE seal and the appropriate height range of the player shall appear on the shin guard. The NOCSAE seal and height range shall be permanently marked on the front of the shin guard. Equipment shall not be modified from its original manufactured state and shall be worn in the manner the manufacturer intended it to be worn.

WIAA MODIFICATIONS

Appendix - Law 4: The Players' Equipment

Requirements for uniforms:

Jerseys and socks of opposing teams shall be of contrasting colors. In the event of a similarity of color, the home team shall be responsible for making the necessary change.

The home team shall wear solid white jerseys and solid white socks, and the visiting team shall wear dark jerseys and socks. Prior to and during the game, jerseys shall be tucked into the shorts, unless manufactured to be worn outside.

Both socks shall be the same color, with a single dominant color, but not necessarily the color of the jersey. Tape applied to socks cannot change the basic color of the socks.

WIAA MODIFICATIONS



Appendix - Law 4: The Players' Equipment

Shin guards must meet the National Operating Committee on Standards for Athletic Equipment (NOCSAE) specifications. The NOCSAE seal and the appropriate height range of the player shall appear on the shin guard. The NOCSAE seal and height range shall be permanently marked on the front of the shin guard. Equipment shall not be modified from its original manufactured state and shall be worn in the manner the manufacturer intended it to be worn.

WIAA MODIFICATIONS

Legal Home Team Uniforms



WIAA SOCCER RULES CLINIC

Appendix - Law 4: The Players' Equipment

Except for the uniform of the goalkeeper, jerseys, shorts and socks of teammates shall be of similar color, design and pattern.

The goalkeeper's socks must differ in color from the opposing players.

The jersey of the goalkeeper shall be distinctly different from that of any teammate or opponent, except the other goalkeeper. The shorts or pants and socks of the goalkeeper are not required to be the same color as his/her teammates but must comply with rule the requirements for a manufacturer's logo.

WIAA MODIFICATIONS

Appendix - Law 4: The Players' Equipment

A manufacturer's logo/trademark appearing on both sides of the socks is legal.

One manufacturer's logo/trademark or reference is permitted on the outside of each item which may not exceed 2¼ square inches and may not exceed 2¼ inches in any dimensions.

An American flag, not to exceed 2 by 3 inches, and either a commemorative or memorial patch, not to exceed 4 square inches and with written state association approval, may be worn on the jersey provided neither the flag nor the patch interferes with the visibility of the number.

Only those names, patches, emblems, logos or insignias referencing the school are permitted on the team uniform, with the exception of a manufacturer's logo, American flag or an approved commemorative patch. The player's name may also appear on the team uniform.

WIAA MODIFICATIONS

Appendix - Law 4: The Players' Equipment

All jerseys shall be numbered on the back with a different Arabic number at least six inches in height and on the front (jerseys or shorts) with the same number, which shall be at least 4 inches in height. Numbers shall be of contrasting color to the jersey (or shorts) and clearly visible.

When an illegally uniformed team is unable to correct the situation or cannot verify state association approval of the uniform, the game shall be played. The referee must, however, notify the state association following the game.

NOTE: The wearing of illegal uniforms or equipment is prohibited even though the coaches of both teams approve it.

WIAA MODIFICATIONS

Appendix - Law 4: The Players' Equipment

Shoes with soles containing metal (aluminum, magnesium, titanium, etc.), leather, rubber, nylon, or plastic cleats, studs, or bars, whether molded as part of the sole or detachable, are allowed as long as the referee does not consider them dangerous or they have been altered in any way creating sharp edges thus rendering them unsafe.

The WIAA recommends that team captains wear an upper arm band of a contrasting color.

Substitutes shall wear distinguishing bibs/pinnies at all times during the match.

WIAA MODIFICATIONS

Appendix - Law 4: The Players' Equipment

Other Equipment

Illegal equipment shall not be worn by any player. This applies to any equipment which, in the opinion of the referee, is dangerous or confusing. Types of equipment which are illegal include, but are not limited to, the following:

Projecting metal or other hard plates, or projections on clothing or person;

Head, arm, thigh or hip pads containing sole leather, fiber, metal or any unyielding materials;

Hard and unyielding items (guards, casts, braces, etc.) on the hand, wrist, forearm, elbow, upper arm or shoulder unless covered, and must be padded with a closed-cell, slow recovery foam padding no less than ½-inch thick;

Shin guards which have exposed sharp edges or have been altered;

Spectacle guards;

WIAA MODIFICATIONS

Appendix - Law 4: The Players' Equipment

Other Equipment Continued

Knee braces which are altered from the manufacturer's original design/production.
Knee braces that are unaltered are legal and do not require any additional padding;

Ankle braces which are altered from the manufacturer's original design/production.
Non-metal ankle braces that are unaltered are legal and may be worn outside a sock. Ankle braces of metal or unyielding material that are unaltered are legal if covered by a sock;

Helmets, hats, caps or visors.

WIAA MODIFICATIONS

Exceptions:

The goalkeeper may wear a head protector made of closed-cell, slow-recovery rubber or other similar material that stays soft in its final form. This head protector shall not have a bill, or other protruding design. It shall not cover the face, other than the forehead, and shall be secured by a chin strap.

The goalkeeper may wear a soft-billed baseball style hat or soft-billed visor. If worn in conjunction with a head protector, it is to be worn outside and may not be attached to the head protector.



WIAA MODIFICATIONS

Players may wear soft and yielding caps during inclement weather. Caps must be alike in color.

Players may wear a soft-padded headband protection during matches.



WIAA MODIFICATIONS

All permissible artificial limbs must be padded with a closed-cell, slow recovery foam padding no less than a ½-inch thick.

Hearing aids worn in or behind the ears are legal provided that the device does not create a threat of injury.

The Executive Director may, in keeping with applicable laws, authorize exceptions to playing rules to provide reasonable accommodations to individual participants with disabilities and/or special needs, as well as those individuals with unique and extenuating circumstances. The accommodations should not fundamentally alter the sport, allow an otherwise illegal piece of equipment, create risk to the athlete, others or place opponents at a disadvantage.

WIAA MODIFICATIONS

A protective face mask may be worn by a player with a facial injury. The mask may be made of hard material, but must be worn molded to the face. A medical release for the injured player signed by an appropriate health-care professional shall be available at the game site.



WIAA SOCCER RULES CLINIC

A tooth and mouth protector (intraoral), if worn, shall: a. include an occlusal (protecting and separating the biting surfaces) portion; b. include a labial (protecting the teeth and supporting structures) portion; c. cover the posterior teeth with adequate thickness; d. be made of any readily visible color; e. not be completely white; and f. not be completely clear.

NOTES:

It is recommended that the protector be properly fitted, protecting the anterior (leading) dental arch and: 1. constructed from a model made from an impression of the individual's teeth, or 2. constructed and fitted to the individual by impressing the teeth into the tooth and mouth protector itself.



ADDITIONAL INFORMATION

2016-17 Soccer Rules Clinic

2016-17 SOCCER

FALL—Girls & 1B/2BBoys

First Practice: **August 22**

Minimum Practice Days: **10**

50% Rule Date: **September 26**

Maximum Number of Contests (Regular Season): **16 + Jamboree**

Season End: **November 19**

SPRING—Boys

First Practice: **February 27**

Minimum Practice Days: **10**

50% Rule Date: **April 3**

Maximum Number of Contests (Regular Season): **16 + Jamboree**

Season End: **May 27**

FOR ADDITIONAL INFORMATION

Review the SOCCER section in the 2016-17 WIAA Handbook:

- Go to wiaa.com/handbook
- Click on “**Sport/Activity Specific Rules & Regulations**”

Review the 2016-17 Soccer Bound for State Regulations:

- For Boys Soccer go to wiaa.com/boysoccer
- For Girls Soccer go to wiaa.com/girlssoccer
- Click on “**Bound for State Regulations**” on the left menu

PLAN TO QUALIFY FOR THE 2016-17 STATE CHAMPIONSHIPS



Work with your AD to make sure your team's photo and roster are submitted through **MaxPreps**.

Photos and rosters can be entered any time, but **NO LATER THAN:**

Fall - OCTOBER 24, 2016

Spring - MAY 14, 2017

2016-17 STATE SOCCER CHAMPIONSHIPS



FALL

November 18-19, 2016

1B, 2B Boys & Girls

Sunset Chevrolet
Sumner, WA

1A, 2A Girls

Shoreline Stadium
Shoreline, WA

3A, 4A Girls

Sparks Stadium
Puyallup, WA

2016-17 STATE SOCCER CHAMPIONSHIPS



Spring

May 26-27, 2017

1A, 2A Boys

Sunset Chevrolet

Sumner, WA

3A, 4A Boys

Sparks Stadium

Puyallup, WA

THANK YOU!

THANK YOU FOR COMPLETING THE RULES CLINIC.
YOU WILL BE PROMPTED TO TAKE THE FINAL EXAM AFTER VIEWING THIS SLIDE.
IN ORDER TO RECEIVE YOUR CERTIFICATE FOR THIS CLINIC, YOU MUST PASS THE
FINAL EXAM WITH 100% ACCURACY.

IF THE FINAL EXAM DOES NOT APPEAR AFTER THIS SLIDE PLEASE USE THE COURSE
MAP IN THE LEFT HAND MENU TO DETERMINE WHICH SLIDES ARE **NOT
COMPLETED**. ALL TOPIC SLIDES, IN ALL SECTIONS, MUST BE VIEWED BEFORE THE
FINAL EXAM WILL APPEAR.