



Materials can be found on the Lower Girls Page

2021-22  
CCHA Lower Girls  
Parent Meeting  
November 2021



## CONTACTS

### **Lower Girls Commissioner**

**Debbie Bohmann**

**[lowergirls@cchockey.org](mailto:lowergirls@cchockey.org)**

**612-237-9472**

### **CCHA President**

**Beth Johnson**

**[president@cchockey.org](mailto:president@cchockey.org)**

### **Girls Hockey Development Committee**

**Drew Nichols**

**Brian Lawler**

**Justin Olsen**

**Chad Lundeen**

**Mike Burke\***

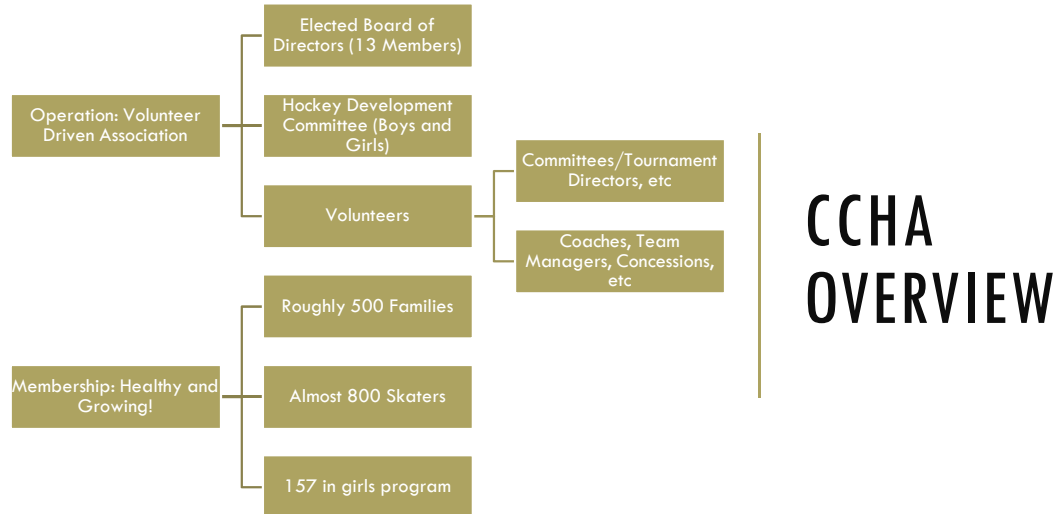
**Patrick O'Leary\***

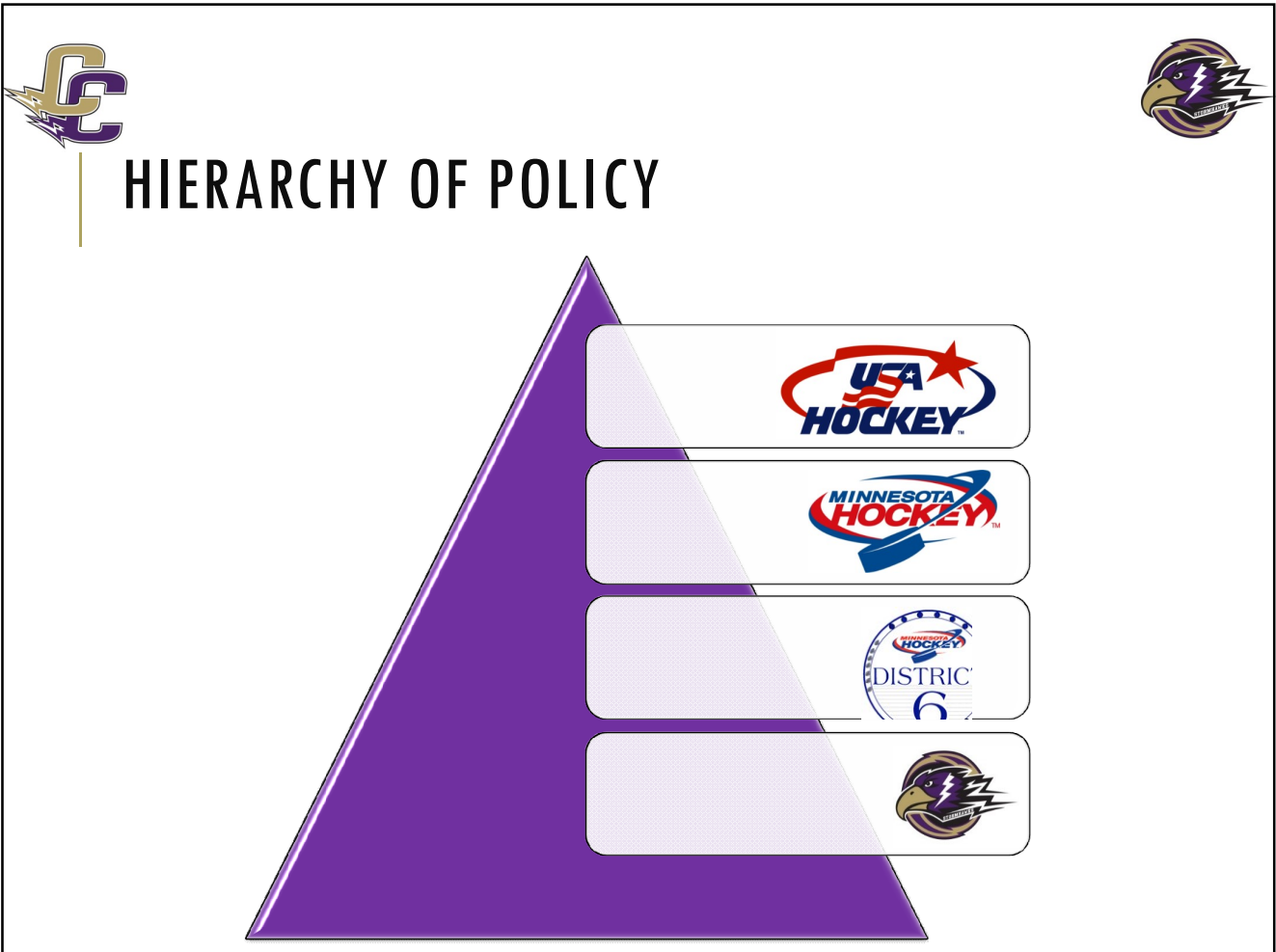
**\*Lower Girls representatives**

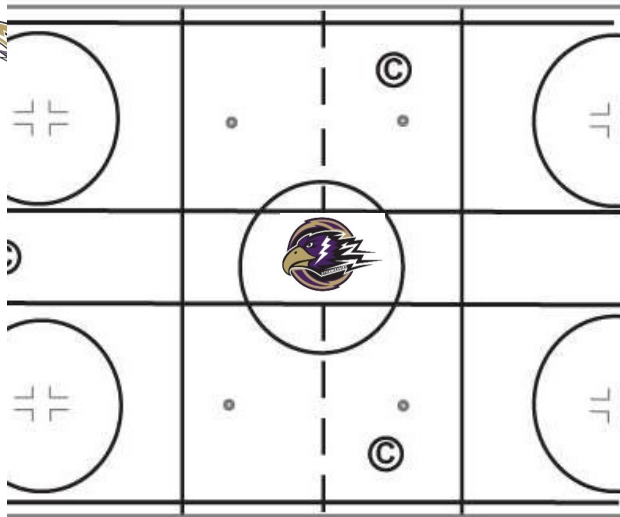


# CONTENTS

CCHA Overview  
Volunteer Info  
Lower Girls Program  
CCHA Code of Conduct  
CCHA Updates  
Covid Considerations  
This Year  
Sports Engine Tips







## GIRLS HOCKEY DEVELOPMENT COMMITTEE (GHDC)

### Girls Hockey Development Committee

Build and Runs Tryouts

Helps build strong coaching

Helps determine practice  
structure

Provides guidance for practice  
plans

Makes sure our players skills are  
growing!



We depend on **volunteers** to keep our Association running smoothly



Volunteer Coordinator: Kelly Olson  
volunteer.coordinator@cchockey.org



Mandatory Volunteer Deposit = \$500



Upper Level Minimum Requirements = 12 hours



Lower Level Minimum Requirements = 6 hours

Every family with a lower level player must complete at least one concession stand shift as part of their minimum volunteer requirement.

## VOLUNTEERS

# TEAM VOLUNTEERS

## Coaches

See "Coaches" page for requirements

## Team Managers

- Step 1 - Need USA Hockey Volunteer #
- Step 2 - Complete Background Check
- Step 3 - Complete Team Volunteer Registration

## Coaches & Managers Needed!

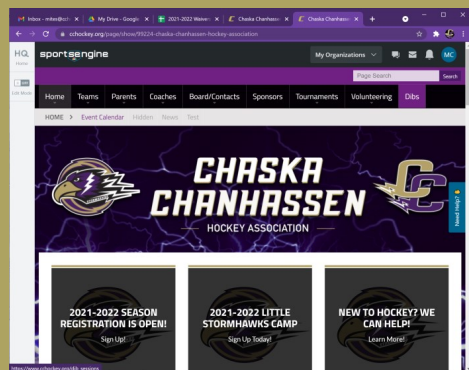
- New coaches needed – [Signup](#)
- Interested Managers – [Signup](#)

## Parent Help Expectations (No Volunteer Credit Received)

- Help with Ice equipment On and Off Ice (Divider Boards, Nets, Barriers, Cones, Tires etc)
- D6 Games and Scrimmages – Clock, Scoresheet, Penalty Box, etc



# VOLUNTEER OPPORTUNITIES



Concessions



**Brick City Tournament and Hockey Hoopla**



Watch the website for special event opportunities



Get your hours in early on **Dibs!**



## LOWER GIRLS PROGRAM

Our Philosophy:  
FUN! FUN! FUN!

Safety

Develop Fundamentals

We consider the season a success when your players return next year.



2021-22 Registration Fees

Ice rates continue to rise every year. Parents like you are volunteering to raise sponsorship and find ways to keep costs down so we can keep dues as low as possible.

Feel free to email

[accountant@cchockey.org](mailto:accountant@cchockey.org)

anytime you have questions regarding your account.

## 2021-22 GIRLS REGISTRATION

15U in progress	
12U 22 players (3 teams in Shakopee co-op)	
10U 46 players (3 teams)	
8U 37 Players (3 teams)	
6U 29 players (3 teams)	

12



## STATE OF THE GIRLS PROGRAM

	2014- 2015	2015- 2016	2016- 2017	2017- 2018	2018- 2019	2019- 2020	2020- 2021	2021- 2022
6U	7	13	19	21	17	17	31	29
8U	28	34	23	27	33	39	26	37
TOTAL	35	47	42	48	50	56	57	66

### STATED PROGRAM GOAL

Consistently field teams at 10U and 12U levels

Challenge: Goalie position

## LOWER GIRLS TEAMS

- 8U
  - Purple – advanced
  - Gold – intermediate
  - Black – intermediate
- 6U – equal teams
  - Purple
  - Gold
  - Black



## 8U SEASON SCHEDULE & IMPORTANT DATES

Weeknight  
Practice

Weekend  
Practice

Weekend  
Game

### 8U: 3 ICE TOUCHES PER WEEK

- Week night ice
- 1 practice per weekend
- 1 (half ice) Game per weekend
  - Games vs Scrimmage vs Controlled Scrimmage
  - January – March: Limited to 4 full-ice games

### KEY EVENTS

- OS Bird Bash November 27 (8U ONLY)
- Picture Day Early December
- Pond Hockey Tournament (CCHA RINKS) 12/31-1/2
- Bloomington Mite Jamboree - February
- Hockey Hoopla (CCHA RINKS) 3/16 – 3/20

## 6U SEASON SCHEDULE & IMPORTANT DATES

Weekend  
Practice

Weekend  
Game

### 6U: 2 ICE TOUCHES PER WEEK

- Saturday Practice Day
- Sunday half ice or cross ice games
- Optional week night ice added outdoors weather permitting

### KEY EVENTS

- Picture Day Early December
- Pond Hockey Tournament (CCHA RINKS) 12/31-1/2
- Bloomington Mite Jamboree - February
- Hockey Hoopla (CCHA RINKS) 3/16 – 3/20



## DEVELOPMENT

**Kids Need To:**

Get on the ice and TRY!

**Coaches:**

Follow ADM

American Development  
Model

[www.admkids.com](http://www.admkids.com)

Are supported by the GHDC  
to boost the developmental  
value of your player's time  
on the ice

Making CCHA time fun, safe  
and a time of development.





## COMMUNICATIONS

Please check the Lower Girls and teams  
pages frequently for updates  
Communication flow expectations

# CCHA CODE OF CONDUCT

Code of Conduct agreement required for every role:

- Player, Parent, Coach, Manager, etc. All Code of Conduct agreements are captured in the registration process
- Players, coaches, parents and spectators are to conduct themselves in a manner that **"honors the Game" and demonstrates respect to other players, coaches, officials, parents and spectators.**
- Playing hockey in the CCHA is a privilege, not a right. Violations by player, parent or coach result in a hearing with the Disciplinary Committee

*"Your child's success or lack of success in sports does not indicate what kind of parent you are.*

*But having an athlete that is coachable, respectful, a great teammate, mentally tough, resilient and tries their best IS a direct reflection of your parenting."*

**Go home if you have any of these symptoms  
so we can stay in school together.**



## **Full CCHA Covid Rules at CCHOCKEY.ORG**

1. WHEN TO STAY HOME
2. MASKS
3. WHEN TO ENTER THE RINK
4. DROP OFF AND PICK UP
5. DRESSING FOR GAMES
6. LOCKER ROOMS
8. SPECTATORS
9. GAMES

## **COVID**

Highlights

## CCHA PLAYER SAFETY

**Concussions:** If coach suspects an athlete may have suffered a concussion, player **MUST** be removed from play.

Coach will complete a form and give you a copy.

Before any return to play, you **MUST** complete the return-to-play form, have it signed by a trained medical professional, and provide it to the coach.

There are **NO EXCEPTIONS**.





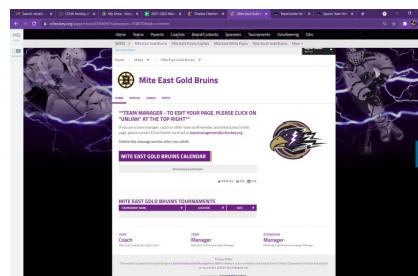
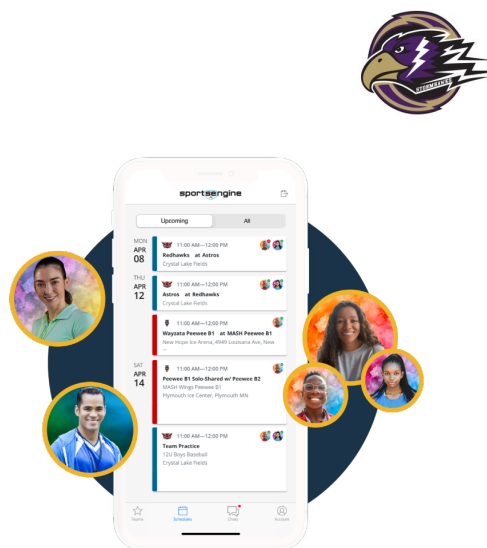
## NAVIGATING SPORTSENGINE

All team information is sent to the email address used for the primary contact at registration!

- Team Page (schedule, roster, chat, and other team info)  
[https://sportsengine-docs.s3.amazonaws.com/SportsEngine/Guide/TeamCenter/TeamCenter\\_for\\_Parents\\_and\\_Athletes.pdf](https://sportsengine-docs.s3.amazonaws.com/SportsEngine/Guide/TeamCenter/TeamCenter_for_Parents_and_Athletes.pdf)
- Add a team schedule to your calendar (ical, etc)
- Mobile App (great for access to team info on the go)
- Individual Account (change email/password, add guardian, etc)

Great Help Guide Available:

<https://help.sportsengine.com/en/categories/10-myse-account>





## CCHA UNIFORM COLORS

Official CCHA  
Uniform Colors

**BLACK** Helmet,  
Gloves, Pants/Shell

Applies to all "Upper" level players:  
Squirt/10U,  
Peewee/12U,  
Bantam/15U

NOT Applicable to goalie helmets  
and gloves



BLACK

BLACK/WHITE

## CCHA BRANDING

- Subject to Federal Trademark registration applications.
- No person is authorized to have anything made bearing these marks without a license from the CCHA Board.
- Do not ask a vendor to do this for you or your team for any merchandise.



OCTOBER 9TH – OCTOBER 18TH

# OPEN NOW!



SHOP YOUR CUSTOM *Click t*

**CCHA APPAREL — ONLINE**

Working with Local Shop,  
Edge Tek this year!

Uniform provider for CCHA, service  
many other local youth sports  
associations

Upper teams often select matching  
team apparel. Lower levels are  
welcome to as well.

Top brands (CCM, Adidas,  
UnderArmor, Warrior)

LOTS of NEW selections for all Men,  
Women, Youth Boy & Girl

Online ordering, sizing, pricing and  
photos is available online at  
[cchockey.org](http://cchockey.org) (linked from homepage)

## CCHA APPAREL — ONLINE



Order Window 4

**11/17-12/1**

**ESTIMATED ARRIVAL 1/12/22**

[Click to Order](#)

All orders will have a 3-4 week turnaround from the close of the ordering window, and items will be individually available for pickup at Edge Tek Chan.

**No Try On Event Dates This Year Due to Covid Concerns.**  
**Families may choose to visit Edge Tek for sizing.**



## CCHA RAFFLE



### **Mandatory participation, each registration fee includes 10 tickets**

Opportunity for players to recoup costs by selling the cards (\$10 x 10 Cards = \$100)

Helps to offset fees and fund association wide programs & equipment needs



### **Raffle tickets distributed in November/December**

Raffle Date TBD, usually occurs during the March Hockey Hoopla

A collection bin will be placed at the Victoria Concession stand in March to turn in your entries. Your team manager or coach will communicate details to you.



### **Additional tickets sold earn additional CCHA benefits**

More details to come soon!

# CCHA Raffle!

**\$10 TICKETS  
5 FOR \$45**

**\$7,500  
GRAND PRIZE**

1	2ND PLACE:	\$2,500
3	3RD PLACE:	\$1,000
4	4TH PLACE:	\$500
10	5TH PLACE:	\$100

**SPONSORED BY HOCKEY STOP**

Drawing during the CCHA Hockey Hoopla at the Victoria Recreation Center 8475 Kochia Lane, Victoria MN 55386. **Need not be present to win!**

**SUNDAY MARCH 15 2021**

License #X-05135-10-005 | Must be 18 or older to purchase a ticket or win a prize. CCHA Board Members and their families are not eligible to win. Winner



# THANK YOU!



Debbie Bohmann  
Lower Girls Commissioner  
[lowergirls@cchockey.org](mailto:lowergirls@cchockey.org)