



Ortonville Downtown Tournament Parking & Warm up Area

Our Diamonds in the Rough are nestled in the middle of residential downtown area of Ortonville which creates a close, high energy, fun experience but...does include some challenges for parking and warm ups. We partner with residence, churches, and business to help accommodate but it generally still gets a little chaotic.

Option 1: Site Parking (limited- see maps)– There are limited spots for parking in the downtown area. Some are surrounding the 8U ball fields and parking is at your own risk. The attached map will show all parking options.

Option 2: Shuttle Service (Not Available For Fall Brawl): We will provide a drop site where you can drop your player and equipment and then park in one of the various remote lots and grab our courtesy shuttle running continuously during tournament hours.

Option 3: Neighbor Service (Preferred) – Many of our local residents are open to partnering with your team to provide a parking area. Leading up to the event we will send out details to inquire and connect you with a partner.

Warning: Road Side Parking is in violation of the Law

Parking on the side of the roads around the tournament is against the Village ordinances and your vehicle will be subject to be towed at the vehicle owners expense, please mind the No Parking signs and respect peoples homes and property.





Ortonville Downtown Tournament Parking & Warm up Area

Site Parking:



1: T-ball Field 1: 15 Spots

2: Behind T-ball 2: 12 Spots

3: Hillside Bible Church: 90 Spots – Limited Sunday Morning

4: The Village Church: 23 Spots - 5min Walk

5: Edna Burton Senior Center: 18 Spots

Not shown Above

6: Township Building: 35 Spots – 6min Walk

7: Post Office: 20 spots – 8 Min Walk (8 min shuttle)

8: Brandon Public Library: 75 Spots – 3 Min Shuttle (17 min walk)



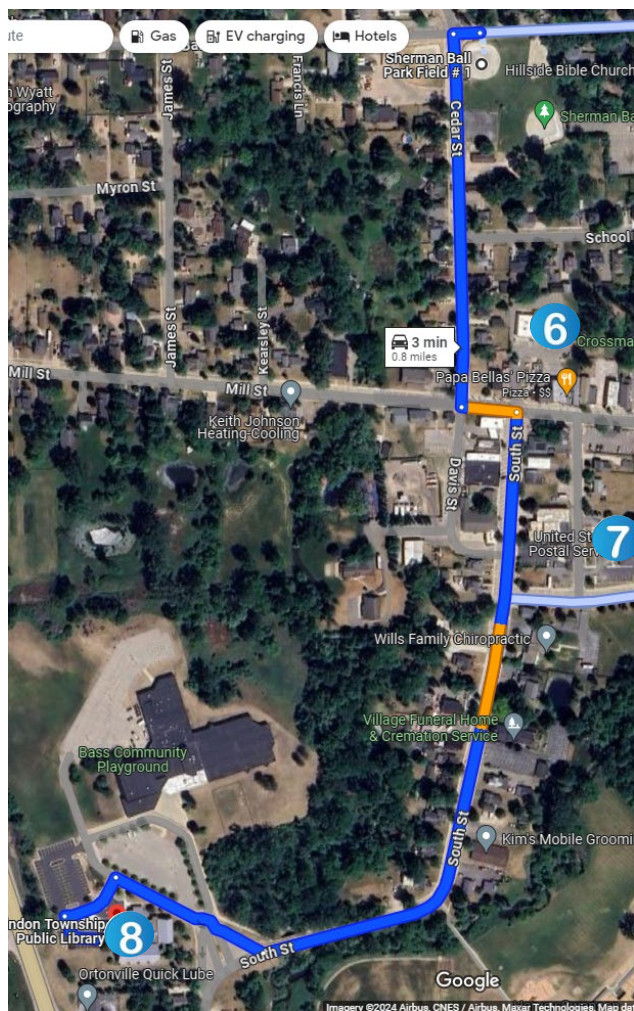
Ortonville Downtown Tournament Parking & Warm up Area

Drop Spot and Shuttle (Not Offered)

We will be providing complimentary Shuttle service as follows:

Not Available for Fall Brawl

The full shuttle route map displays all Shuttle pickup/drop off points. Primary route is round trip from Public Library to the ball fields approximately every 15 minutes.





Ortonville Downtown Tournament Parking & Warm up Area

Neighborhood Parking Service

Understanding the parking challenges that do occur downtown, we have many generous neighbors who have offered their properties for parking, some have small costs. The number of VEH may be limited, car pooling is encouraged. These venues offer your team a guaranteed parking location near the fields all weekend long. Arrangement with these host families will be between you and them. If you are interested to discuss a weekend long parking arrangement, please reach out to Kenny Ayers by text or email and he can connect you with a host family.

Kenny Ayers

Ph: (989) 928-0028

Email: Brandonhighschoolbaseball@gmail.com



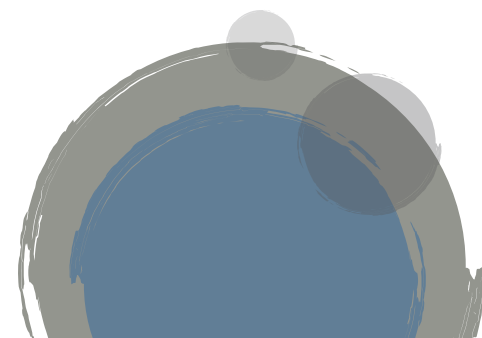
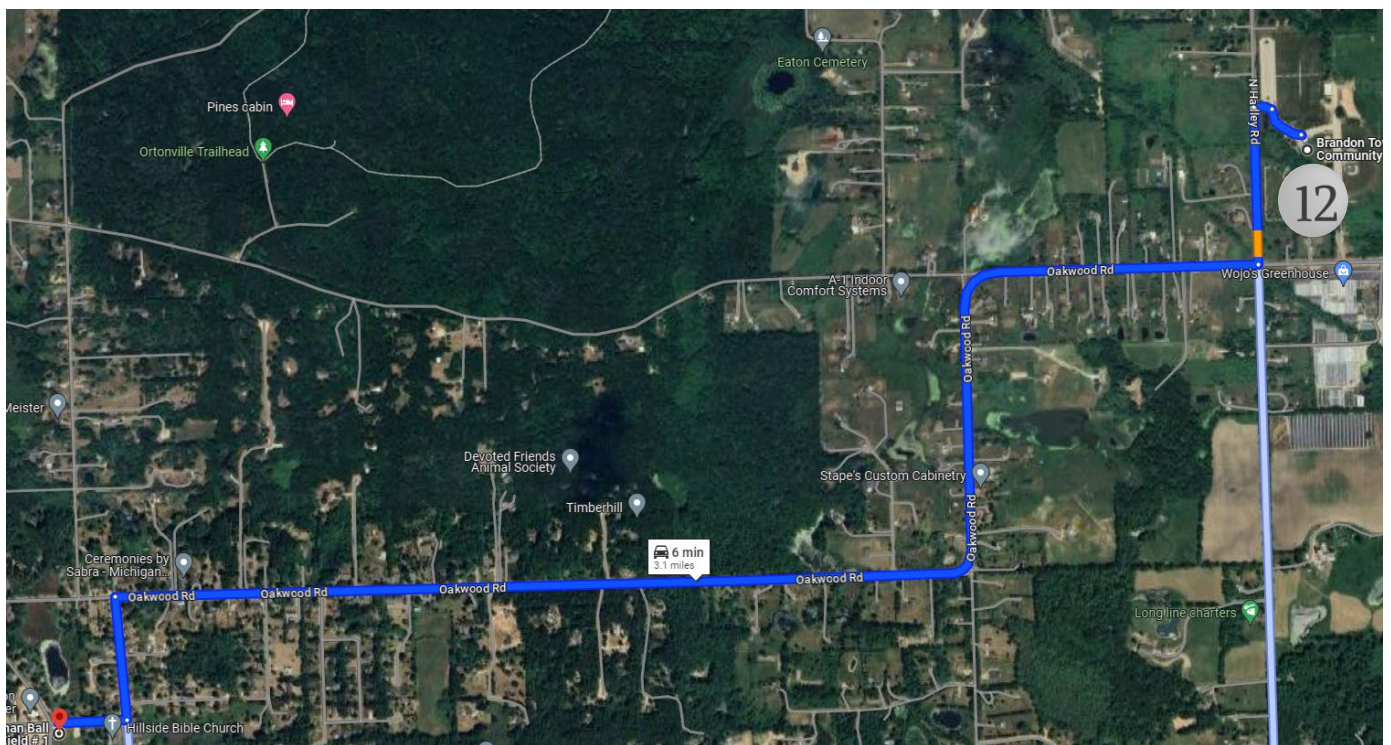
Ortonville Downtown Tournament Parking & Warm up Area

Approved Warm Up Area's

10: Public Library: 4 Teams Max -(see shuttle map)

11: Harvey Swanson Elementary (across pedestrian bridge) 4 Team Max -(see shuttle map)

12: Brandon Township Community Park Little League Fields - Unlimited Space



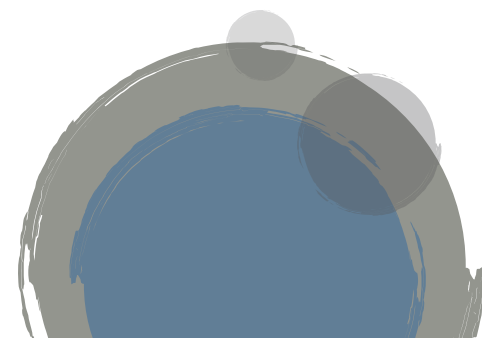


Ortonville Downtown Tournament Parking & Warm up Area

Walking Map

The Village Church 5 min

Township Building 6 min



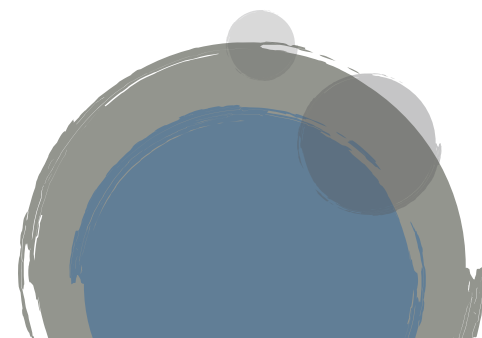
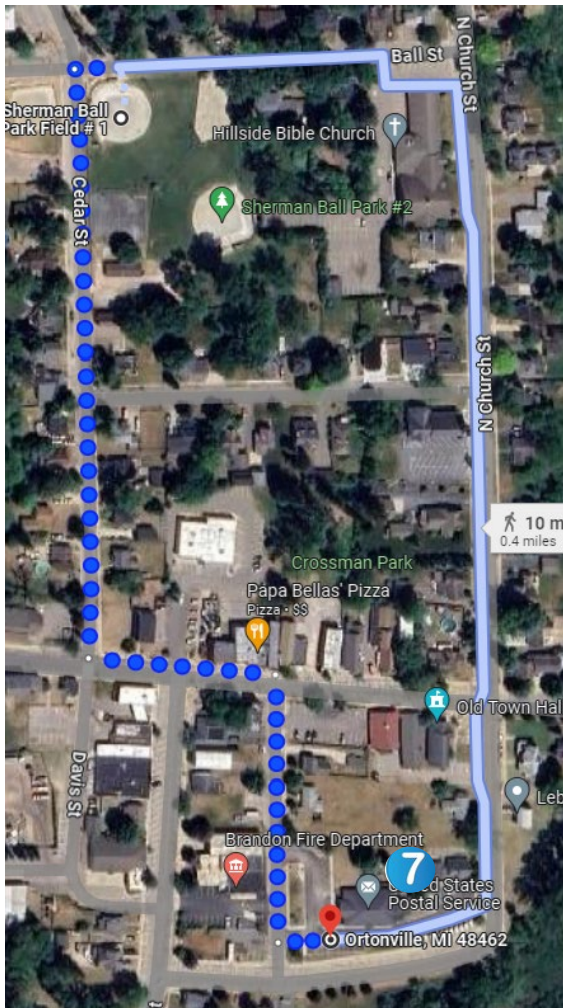


Ortonville Downtown Tournament Parking & Warm up Area

Walking Map

Post Office 8 min

Downtown Parking 6 min





Ortonville Downtown Tournament Parking & Warm up Area

Parking Availability Details & Restrictions

Location	Friday	Saturday	Sunday
Brandon High School	Unlimited	Unlimited	Unlimited
Brandon Middle School	Unlimited	Unlimited	Unlimited
Harvey Swanson JV BB	Unlimited	Unlimited	Unlimited
DownTown Parking			
1: Tball Field 1: 15 Spots	Unlimited	Unlimited	Unlimited
2: Behind Tball 2: 12 Spots	Unlimited	Unlimited	Unlimited
3: Hillside Bible Church: 90 Spots	Available	Not Available	After 12PM
4: The Village Church: 23 Spots - 5min Walk	Available	Available	After 12PM
5: Edna Burton Senior Center: 18 Spots	Available	Available	Available
6: Township Building: 35 Spots – 6min Walk	Available	Available	Available
7: Post Office: 20 Spots –Shuttle 8min Walk	After 5PM	After 12PM	Available
8: Brandon Public Library: 75 Spots –Shuttle	Not Available	Available	Available