



HANDBOOK & POLICIES

Adopted 09/24/17

Revised 12/30/19

Revised 02/05/21

Revised 01/05/22

Revised 05/14/22

Revised 12/06/23

This Canton Minor Hockey Handbook has been developed to serve as a resource for the Canton hockey community. This document will serve as a roadmap for how Canton Minor Hockey will be run and what participants in the program should expect from Canton Minor Hockey. This document is meant to be fluid, as we exist in a constantly changing environment with regional development teams and inconsistent numbers year over year. Those issues need to be addressed and others most certainly will arise as time passes. It should be expected that this handbook will be evolved and modified as deemed necessary.

This Handbook reflects contributions from many youth hockey associations with which we have collaborated over the years. We have borrowed from their publications and benefited from their suggestions.

We look forward to the season ahead and to the continued growth of our program and our youth.





Table of Contents

I.	INTRODUCTION FOR PARENTS	XVII.	POLICIES OF CANTON MINOR HOCKEY
II.	CANTON MINOR HOCKEY PHILOSOPHY	a.	Substance Abuse
III.	REVISIONS	b.	Locker Room Policy
IV.	ORGANIZATIONAL CHART	i.	Locker Room Monitoring
V.	BOARD MEETINGS	ii.	Parents in Locker Rooms
VI.	GRIEVANCE PROCEDURE	iii.	Mixed Gender Teams
VII.	TEAM AND PLAYER CLASSIFICATION	iv.	Cell Phones and Other Mobile Recording Devices
	a. Team Classification	v.	Prohibited Conduct and Reporting
	b. Age Classification	c.	Policy on Coaches Conduct
	c. Levels of Play	d.	Policy on the Conduct of Parents
	i. Cub Club	i.	Conduct at the Rink
	ii. 6U	ii.	Conduct at Hotels
	iii. 8U	e.	Policy Regarding the Conduct of Spectators
	iv. House League	f.	Policy Regarding the Destruction of Damage of Rink Property
	d. Team Composition	g.	Registration and Payment Policy
	i. Affiliated Players & Dual Rostering	h.	Scholarship Policy
VIII.	PLAYER REGISTRATION	i.	Reimbursement Policy
IX.	PLAYER MOVEMENT	XVIII.	St. Lawrence County and Local Arenas
X.	TOURNAMENTS		
	a. State Bound Teams		
XI.	PLAY IN CANADA		
XII.	COACHING		
XIII.	TEAM SUPPORT		
	a. Manager		
	b. Minor Officials		
	c. Media Contact		
XIV.	REFEREES		
XV.	CONCESSION		
XVI.	PLAYER BEHAVIOR AND CONDUCT		
	a. Punctuality		
	b. Attendance		
	c. Conduct		





I. INTRODUCTION FOR PARENTS

We hope this Handbook will provide you with an introduction to the philosophies, policies, rules and expectations that shape Canton Minor Hockey's program and activities. We encourage you to read this Handbook and understand the operating policies. It is a valuable resource for families participating in the program to provide you with information about how Canton Minor Hockey operates. We hope that it also will encourage you to become more involved.

Canton Minor Hockey could not survive without volunteers. Work begins long before registration day and continues through the entire ice hockey season. Your help is vital to our organization. As you read this handbook, think about how your particular talents, interests and skills might help Canton Minor Hockey. We need your participation and support! Contact the President, a member of the Board of Directors, a Coach or a Manager to discuss how you can volunteer.

II. CANTON MINOR HOCKEY PHILOSOPHY

The primary purpose of Canton Minor Hockey is to contribute to the development of our youth through the game of hockey. Canton Minor Hockey is committed to providing our young people the opportunity to have fun on the ice while learning the basic skills of ice skating and how to play the game of hockey. Our program is available to all interested youth regardless of socio/economic background.

As a team sport, hockey affirms the importance of commitment, self-discipline and sportsmanship among participants. Our commitment is to assure that the young people who participate in Canton Minor Hockey will develop skills and values, which will bring lifelong benefits to them and to society.

Specific benefits participants of youth hockey receive include:

- Development of the skills necessary to play ice hockey
- Knowledge of the rules and strategies of the game
- Knowledge of conditioning techniques that affect short and long term health and performance
- Commitment of teamwork
- Enjoyment of a recreational activity
- Sportsmanship

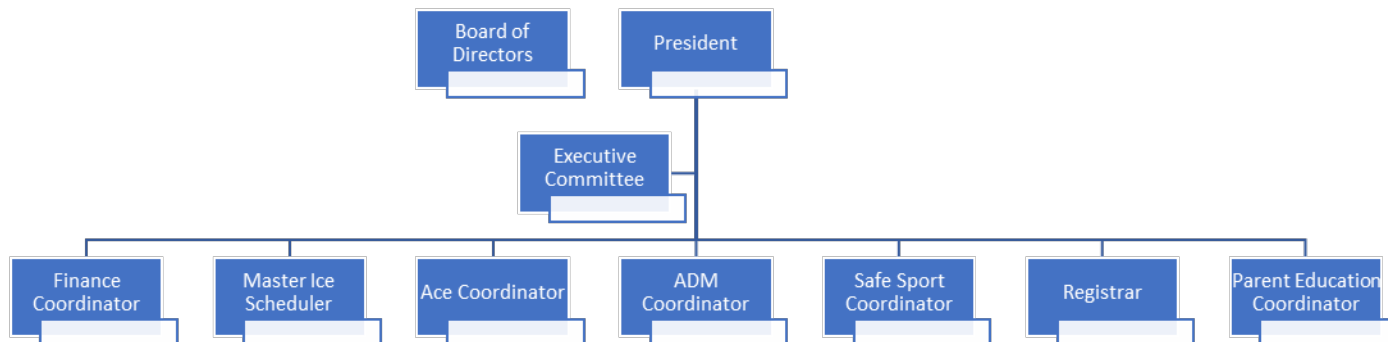




III. REVISIONS

The Board of Directors will review the handbook on an annual basis and revise it as needed. The Canton Minor Hockey website will always have the current season's fully revised handbook.

IV. ORGANIZATIONAL CHART



The President of Canton Minor Hockey is appointed by the Board of Directors. The President has full authority in all decisions regarding Canton Minor Hockey.

The President is assisted in their duties not only by the people holding the position outlined above but by an Executive Committee composed of the President and two members of the Board of Directors appointed by the President annually. The President will use his/her Executive Committee to receive input and varying opinions on the different topics that arise. The President also relies upon the Board of Directors to help resolve any problems, issues or disputes as soon as possible.





V. **BOARD MEETINGS**

The Board of Directors will conduct its annual organizational meeting on or about the 2nd Tuesday of April. All meetings outlined below will be held on or about the 2nd Tuesday of the identified month.

- June
 - Year-end financial review
 - USA Hockey & NYSAHA rules and policy update
- August
 - Budget review and approval

VI. **GREIVANCE PROCEDURE**

Canton Minor Hockey will employ the following grievance procedure

1. Meet with team coaches to attempt to resolve the problem
2. Meet with the President to attempt to resolve the problem
3. President meets with Executive Committee for a consensus

If the grievance is still not resolved to the satisfaction of the grieving party then:

4. Put problem in writing, coaches put their decision and reason in writing and then meet with Board of Directors in an attempt to resolve the problem.
5. Majority vote by the Board of Directors renders final decision.

VII. **TEAM AND PLAYER CLASSIFICATION**

a. **Team Classification**

Canton Minor Hockey is a registered Tier II member of the New York State Athletic Hockey Association (NYSAHA) which is an approved affiliate of USA Hockey and abides by all of it's regulations governing amateur hockey including but not limited to the American Development Model (ADM) model.

b. **Age Classification**

Under the USA Hockey format players are classified based on January 1 calendar birth year. For example, in order for a player to participate in 12U team that individual cannot turn 13 to January 1st of that year.

c. **Levels of Play**

Canton Minor Hockey follows the USA Hockey American Development Model (ADM) in consideration with NYSAHA rules and regulations. More information about the ADM can be found at www.admkids.com.





i. **Cub Club**

Cub Club is our introductory program. This is where young children can learn how to skate, no sticks are involved. We will instruct on balance, basic stance, control and how to fall and get up. Most of all, the program is designed to build confidence on the ice and to have fun. Pressures to perform, to score and to win are eliminated. All first year players (3 and up) will be enrolled in this program. Players who have never skated as well as those who have some skating experience are welcome to participate. Returning players who are not ready to join the Mite Division are welcome to remain in the program in one of the advanced groups.

Basic skating skills to include stopping, cross-overs and skating backwards will be the main consideration in a child moving between the various levels in the Beginner Program. It is important to note that not all children develop at the same pace. Some children will be more advanced at an early age where others will struggle. The overall goal is that each child will be ready to play Mite hockey when they are 7 years old. Longtime observers of the program will tell you how the individual skill level of the players balance out over time.

It is required that the skaters have a full face shield helmets that fit properly. Please have winter gloves and skates that are sharpened. Ship pads are optional. If a parent wants to be on the ice, they have to wear skates and a helmet.

ii. **6U**

6U serves as an introduction to the basics of hockey. As the season progresses players are introduced to concepts such as advanced skating techniques, passing, shooting and stick handling. The 6U program runs for approximately 20 weeks with players on the ice on an average of 3 times per week for approximately 50 minutes per ice session. A limited number of play days are scheduled with other local area programs throughout the season.





iii. **8U**

The 8U Program continues many of the skills development areas from 6U adding and elevated level of competition, skill development and general hockey awareness. The 8U program runs about 20 weeks with players on the ice and average of 3 times per week for approximately 50 minutes per ice session. The travel and game play of the 8U level becomes slightly more extensive throughout the county or local area. USA Hockey prohibits players are 8U classified from playing up an age classification regardless of skill.

iv. **House League**

This option is for Boy & Girls that are generally between the ages of 8 and 12 who are interested in limited hockey throughout the season. Canton Minor Hockey reserves the right to shape the program to best serve the participants.

d. **Team Composition**

- i. Canton Minor Hockey will offer a slate of teams that best serve Canton Minor Hockey. The programs may change on an annual basis. For any tryout based teams the head coach has the responsibility of selecting his/her players with the aid of the assistant coaches. The decision and placement of players on the team is final. Appealing to the President will not alter the decision of the head coach.

ii. **Affiliated Players & Dual Rostering**

An affiliated player (AP) is a skater that will fill in for practices or games as needed when rostered skaters are not available. An AP can be designated at any point in the season at the discretion of the head coach. The AP will be billed an amount that is agreed upon between the coach and parent and must be approved by the CMH Executive Committee. This definition applies to Steel, Blades and CMH Bear programs.

If a skater is rostered on another team (CMH or elsewhere) and pays the full registration fee for a CMH Bear program that player must sign a priority agreement with the CMH head coach to designate which team is their priority. A skater cannot be rostered with two state bound teams in the same season. The number of affiliated players on a team is at the discretion of the head coach.





VIII. **Player Registration**

Canton Minor Hockey may accept players from outside its traditional geographic boundaries. Historically, it has been the policy of Canton Minor Hockey for players to play in their hometown. We realize that due to more recent circumstances, that is not always possible. We also recognize that we have no ability to force a player to play in his/her hometown. Any registration of an outside player must in accordance with USA Hockey rules, a release must be provided from the prior organization and the President will have final discretion on whether to accept an outside player registration. If a player from another organization does register with Canton Minor Hockey his/her parents will fully cooperate with the policies expressed in this handbook. As regional hockey continues to evolve, our program is threatened by local youth choosing to play elsewhere. Our focus must be to provide the best instruction and the best environment so we can keep our local players and attract players at all levels who wish to learn the game of hockey.

IX. **Player Movement**

There is limited flexibility in moving players between levels. The goal is to allow a child to play on a team while developing skills at the appropriate level. However, a league or an individual tournament may have an age limit that will have to be complied with. Our rules acknowledge that NYSAHA has specific rules regarding 8U players moving up (8U moving to 10U).

In rare circumstances, a player may be moved up in classification. This will only be done after consultation between the child's parent/guardian, the President, the player's former coach and the coach of the team at the higher level. Among the factors to be considered in addition to player's skill level are his/her physical and emotional maturity, his/her qualities as a team player, his/her dominance at the lower level and whether it will be beneficial for the player to move up. There are serious risks involved in a player moving to a higher level and these have to be acknowledged by the parent/guardian. In the event that player is moved up and it is later determined by the President, the coaches or the parent/guardian that this was not in the child's best interest, he/she will be returned to the team at his/her age level. The President will have the final say in determining whether a player should be moved up or back down. The feelings of the coaches and parents/guardians will be considered but will not be paramount in making these determinations.

Any contemplated upward player movement must be initiated by the child's current or last coach. Not the parents.





X. Tournaments

There are numerous opportunities for teams to enter tournaments. The cost of tournaments is in addition to registration fees and each team will be responsible for collecting fees to cover the tournament. USA Hockey rosters may be required to enter a tournament and can be acquired from the Canton Minor Hockey Registrar. All USA Hockey rosters should be requested at least 30 days prior to the start of the tournament to allow proper processing time with USA Hockey.

a. State Bound Teams

- i. If two teams within the same age classification would like to be the state bound represented team from Canton Minor Hockey a three-game playoff format will be used. USA Hockey rules for that age classification will apply to the playoff games. The team winning two of the three games will represent Canton Minor Hockey in state bound play for that season.
- ii. If more than two teams within the same age classification would like to be the state bound represented team from Canton Minor Hockey a round robin format will be used. Each team will play each other once and the team with the most wins after round robin play will represent Canton Minor Hockey in state bound play for that season. If a tie exists, the winner of the head to head results between the tied teams will be the state bound team.
- iii. Teams that are interested in representing Canton Minor Hockey in state bound play must make their declaration known to the CMH President prior to the dates established by NYSAHA each season.

XI. Play in Canada

To play in tournaments or games in Canada a Trainer is required to be on the bench and a travel permit will be required. Please review <http://www.hockeycanada.com> for details. Please check the Canadian coach or tournament director as they may waive the requirement of a trainer when they are playing a United States team as long as one coach is certified in first aid or they may allow you to borrow the opposing team's trainer in the event of an injury. Also, please be aware of the current passport rules. Travel Permits can be obtained from the Canton Minor Hockey Registrar and should be requested at least 30 days prior to the start of the tournament or game to allow proper processing time with USA Hockey.





XII. Coaching

Canton Minor Hockey coaches come from a variety of backgrounds, but all share two important characteristics; they are ALL volunteers and they all care deeply about the development of all the players on their teams. Our coaches require the support of the player's parents. Anything parents can do to help with off-ice responsibilities is encouraged.

All head coaches will be selected by the President. All assistant coaches will be selected by the head coach. Selection criterion for becoming a coach becomes more rigorous as the age and level of competition of the players increases.

All coaches must obtain the USA Hockey certification appropriate to the level at which they are coaching. Head and Assistant coaches must be fully familiar with this handbook, NYS Amateur Hockey Association's annual guidebook and all USA Hockey rules and regulations.

USA Hockey provides training and certification to individuals who wish to coach through the Coaching Educational Program (CEP). This program is administered through USA Hockey in the form of clinics and online modules. These clinics and modules are specifically designed to supply each coach with the knowledge of his/her responsibilities and skills that will equip him/her to do the best possible job at any level of play. USA Hockey and Canton Minor Hockey require all persons interested in becoming coaches to be compliant with USA Hockey coaching certification requirements.

The Head Coach or Team Manager should coordinate all team meetings. Each should have a team meeting prior to the start of the season. The goal of this meeting should be to open the lines of communication and outline expectations for the season. Only certified coaches are approved to be on the ice during practices and on the bench during games.

XIII. Team Support

There are many critical areas where parents can contribute to the welfare of a team. These are covered below:

a. Managers

Every Canton Minor Hockey team must have a manager. Managers provide a vital link between the coach and parents and have administrative responsibilities scheduling games, obtaining officials for home games, notifying parents of schedule changes, scheduling parents for the concession stand, reserving hotel rooms





for away games/tournaments and especially for facilitating communication between coaches and parents throughout the hockey season. Other responsibilities may include, welcoming visiting teams, appointing game minor officials, provide game sheets at home games, help with home tournaments and being prepared to reciprocate a player gift exchange.

b. Minor Officials

Each team is responsible for providing a Scorekeeper, Timekeeper and two Penalty Box Officials at their home games. These are relatively easy tasks to perform once you become familiar with the procedure. These responsibilities also offer a new perspective to the game. Off-ice officials are required to follow all instructions given by the on-ice officials before, during and after games. Off-ice officials are to be supportive of on-ice officials, exhibit the utmost sportsmanship and not visibly root for your team or against the opponent.

c. Media Contact

Each team should designate a parent to be the media contact. This parent should arrange for a team picture to be published, copies given to each player and should also provide the local paper with a summary of the week's games. It is of the utmost importance that the summaries be positive, be team oriented and include as many of the players as practical.

XIV. Referees

Referees for all games must be arranged by the coaches or manager for each team. Canton Minor Hockey pays for the referee.

XV. Concession Stand

Beginning with the 2011-2012 hockey season the responsibility of concession stand at the Canton Pavilion was assigned to Canton Minor Hockey by the Town & Village of Canton. Canton Minor Hockey accepted this responsibility as a means of raising money for Canton Minor Hockey and providing a consistently more enjoyable concession experience for spectators at games. In exchange for this arrangement, Canton Minor Hockey has agreed to make an annual contribution to the Canton Pavilion to improve the facility in some material way. The Executive Committee shall be responsible for making suggestions to the Board of Directors at the end of each season on the contribution amount and purpose. The contribution made will require the unanimous consent of the Board of Directors. This arrangement is expected to continue year after year.





The responsibility for the operation of the concession stand rests with all families participating on teams selected by the board prior to the start of the season. At the beginning of each season, the President will appoint a manager for the concession stand who will be responsible for the overall management of the concession stand, including ensuring proper inventory is maintained. Canton Minor Hockey utilizes the Dibs System to manage and schedule concession obligations. All home Canton High School hockey games (girls and boys), weekend public skating, 8U playday and special events (determined by the Board) will be assigned Dibs credits and must be covered by representatives of Canton Minor Hockey as prescribed above.

At the beginning of each season the Board will determine the total number of Dibs credit hours required based on the total number of eligible Canton Minor Hockey participants for that upcoming season. Dibs credit hours earned more than the required amount will not be credited from season to season. Cub Club players who move up to 6U during the season will be required to complete a prorated Dibs obligations as determined by the Board.

The failure to fulfill the seasonally required Dibs credit hours shall result in a penalty being assessed on an hourly basis, not to exceed \$50 per hour. The penalty fee will be determined by the Board annually. Concession penalties will be billed through the CMH payment system and players will not receive a release or be allowed to participate in a subsequent season for CMH until all bills are paid.

It is the Board's expectation that concession profits will allow Canton Minor Hockey to maintain the current fee structure, even in the face of increased ice time cost.

XVI. Player Behavior and Conduct

The rules in this handbook are designed to establish guidelines to support young people who participate in Canton Minor Hockey. Many of the rules are enacted by USA Hockey, the governing body of youth hockey and Canton Minor Hockey is committed to ensuring these rules are observed. Canton Minor Hockey and its coaches, team managers and volunteer parents all have a vested interest in providing a safe, fun-filled environment for each player. In return, each skater must understand that coaches, assistant coaches, parent helpers, referees and all adults are to be treated with respect. Canton Minor Hockey skaters are expected to be attentive to their coaches' instruction and to avoid disruption.

The President and the Board of Directors support the coaching staff in





cases where reasonable discipline must be exercised in order to maintain an organized and enjoyable learning environment.

a. Punctuality

Ice time is valuable and should not be wasted. All participants should arrive at games and practices with sufficient time for suiting up and necessary pre-game/practice instruction and/or warm-up. Unless your coach has told you differently, it is recommended that you be ready to “take the ice” at least 15 minutes before the scheduled starting time. It will be at the coach’s discretion to penalize a player when tardy. Punctuality rules should be in place at the beginning of the season.

b. Attendance

Reliable attendance is essential to personal skill development and the development of team cohesiveness. Poor attendance habits will be grounds for removal from a team and there will be no refund of registration fees. This decision will only be made after the coach has discussed with the player and his parents the problems caused by poor attendance. The President will have the final decision in this regard.

c. Conduct

All players must display good sportsmanship both on and off the ice. Good sportsmanship is expected during locker room attendance, practices and games. Games can be a stressful time for players but regardless of the game’s outcome or quality of the officiating players must display good sportsmanship. Foul language, fighting, negativism, vandalism, damaging or defacing property or a general display of poor sportsmanship is unacceptable and will be dealt with immediately. Poor sportsmanship reflects poorly on the individual, the team, Canton Minor Hockey and the greater Canton community. Any participant found to have severely or persistently violated Canton Minor Hockey rules shall be dismissed from the program without refund.

Canton Minor Hockey will adhere to all USA Hockey rules with respect to minor and major penalties. In accordance with USA Hockey procedure, the President or a committee appointed by the President shall review match, game or gross misconduct penalties received by a Canton Minor Hockey player during a game. It is the responsibility of the team coach to report any such incident, in writing to New York State Hockey and USA Hockey if required by their rules. The head coaches are responsible to make sure the





President is fully apprised of any such incident.

XVII. Policies of Canton Minor Hockey

a. Substance Abuse Policy

Canton Minor Hockey firmly believes that the use of chemical substances neither enhances nor improves an individual's performance. The use of tobacco, alcohol or misuse of non-prescription drugs is prohibited.

The first incident will be a suspension from the next two (2) games. Attendance at all practices is still required.

The second incident will be an immediate suspension from participating in all future practices and games for the remainder of the season. This includes tournaments and playoff games. There will be no refunds of registration fee.

b. Locker Room Policy

Canton Minor Hockey adheres to USA Hockey's SafeSport program to protect its participants from physical abuse, sexual abuse, bullying, harassment and/or hazing. To help prevent abuse or misconduct from occurring in our locker rooms Canton Minor Hockey has adopted the following locker room policy. This policy is designed to maintain personal privacy as well as to reduce the risk of misconduct in locker rooms.

i. Locker Room Monitoring

Canton Minor Hockey has limited use of locker rooms and changing areas (e.g., generally 30-45 minutes before and following practices and games). This allows for direct and regular monitoring of locker room areas. While constant monitoring inside of locker rooms and changing areas might be the most effective way to prevent problems, we understand that this would likely make some players uncomfortable and may even place our staff at risk for unwarranted suspicion.

Prior to players entering a locker room a coach or an approved team locker room monitor will sweep the locker room/changing area to ensure the area is safe for the players to enter. A coach or locker room monitor will remain directly outside of the locker room while players are getting changed to ensure no unauthorized personnel enter the





locker room. A coach or locker room monitor will secure the locker room appropriately during times when the team is on the ice.

ii. Parents in Locker Rooms

Except for players at the younger age groups (10U and below) parents are discouraged from entering locker rooms unless it is truly necessary. If a player needs assistance with his or her gear or has a disability that warrants assistance then we ask that parents let the coach know beforehand that he or she will be helping the player.

Naturally, with our youngest age groups it is necessary for parents to assist the players getting dressed. We encourage parents to teach their players as young as possible how to get dressed. In circumstances where parents are permitted in the locker room, coaches are permitted to ask that the parents leave for a short time before the game and for a short time after the game so that the coaches may address the players. As players get older, the coach has discretion to prohibit parents from a locker room.

iii. Mixed Gender Teams

Some of our teams consist of both male and female players. It is important that the privacy rights of all players are given consideration and appropriate arrangements made.

Where possible, Canton Minor Hockey will have the male and female players dress/undress in separate locker rooms and then convene in a single locker room before the game or team meeting. Once the game or practice is finished, the players may come to one locker room for a team meeting and then the male and female players proceed to their separate locker rooms to undress and/or shower. If separate locker rooms are not available, then the players will take turns using the locker room to change. We understand that these arrangements may require that players arrive earlier and leave late but we believe that this is the most reasonable way to accommodate and respect all players.

iv. Cell Phones and Other Mobile Recording Devices

Cell phones and other mobile devices with recording capabilities, including voice recording, still cameras and video cameras, are not permitted to be used in the locker





rooms. If phones or other mobile devices must be used, they should be taken outside of the locker room.

v. Prohibited Conduct and Reporting

Canton Minor Hockey prohibits all types of physical abuse, sexual abuse, emotional abuse, bullying, threats, harassment and hazing as described in the USA Hockey SafeSport Handbook. Participants, employees or volunteers of Canton Minor Hockey may be subject to disciplinary action for violation of these locker room policies or for engaging in any misconduct or abuse or that violates the USA Hockey SafeSport Policies. Reports of any actual or suspected violations please email USA Hockey at SafeSport@usahockey.org or call 1-800-888-4656.

c. Policy on Coaches Conduct

Canton Minor Hockey coaches are expected to adhere to the following rules of conduct:

- 1 Winning is a consideration, but not the only one, NOR THE MOST IMPORTANT ONE. The child's health and welfare are more important than winning the game.
- 2 Be a positive role model to your players, display emotional maturity and be alert to the physical safety of players.
- 3 Be generous with your praise when it is deserved. Be consistent, honest and fair. Learn to be an effective communicator and coach.
- 4 Adjust to personal needs and problems of players. Be a good listener, never verbally or physically abuse a player or official. Give all players the opportunity to improve their skills, gain confidence and develop self-esteem. Teach them the basics.
- 5 Organize practices that are fun and challenging for your players. Familiarize yourself with the rules, techniques and strategies of hockey and encourage all players to be team players.
- 6 Be understanding. There will be times when your players play to the very best of their ability but the other team is simply better.
- 7 Teach players the basics of the game.





- 8 Maintain an open line of communication with your parents. Explain the goals and objectives of Canton Minor Hockey. Stress physical fitness, good health habits, a well-rounded diet and abstinence from harmful substances.
- 9 Be concerned with the overall development of ALL your players.
- 10 To play the game is great, to love the game is greater.
- 11 It is mandatory to maintain the proper level of certifications.
- 12 At no time can a Canton Minor Hockey coach permit a player, not registered with USA Hockey and Canton Minor Hockey to participate in a Canton Minor Hockey practice or game. Such conduct may result in an immediate suspension from coaching duties.

d. Policy on the Conduct of Parents

All parents must display good sportsmanship at games and practices regardless of whether a contest is won, lost or how a game is officiated. As parents and guardians we must be positive in our attitudes toward the game of hockey and emphasize the cooperative nature of the game. Negative and rowdy behavior in or around the hockey rink reflects directly and poorly on the whole organization. We must foster good relationships between our young players, the officials and our competitors. As parents, we must set positive examples for our children.

i. Conduct at the Rink

In accordance with USA Hockey's policy of ZERO TOLERANCE, the following actions are **not** acceptable:

- Yelling at or threatening referees, opposing players or coaches before, during or after games or practices.
- Direct confrontations with coaches, parents or players.
- Demonstrations of frustration or anger after a game loss.
- Unnecessary or exaggerated celebration of a goal scored or a game won that would embarrass or demean the opposing team.
- Any physical abuse of any other person.
- Approaching the bench during a game situation





unless summoned by a coach.

Coaches have the right to deny parents access to the locker rooms.

Disruptive or abusive parents may be asked to leave a rink. Such conduct may result in an immediate suspension from Canton Minor Hockey functions until a Board hearing is held on the matter. Further penalties may be assessed at that time.

REMEMBER THAT EVERY PARENT, COACH AND PLAYER REPRESENTS CANTON MINOR HOCKEY AND MUST ACT ACCORDINGLY. IT IS EXPECTED THAT EVERY PARENT WILL CONTRIBUTE THEIR EFFORTS AS THEY CAN FOR THE BENEFIT OF THEIR CHILD, THE TEAM, CANTON MINOR HOCKEY AND THE GREATER CANTON COMMUNITY.

ii. Conduct at Hotels

Supervision of all players regardless of age in all hotel rooms, pool and other hotel areas including restaurants is the sole responsibility of the parents or guardians of those players (including siblings of players where applicable). Safety in hotels is of the utmost priority at all times.

HOTEL BEHAVIOR GUIDELINES ARE AS FOLLOWS:

- Know where your children are at all times (including siblings).
- Do not allow your children to roam around the hotel without an adult.
- Do not allow your children in pool, sauna, exercise rooms or other pool related areas unsupervised, regardless of age or perceived swimming ability. Many hotels do not provide lifeguards.
- Never leave your children alone in a hotel room for any period of time.
- Familiarize yourself with all individual hotel rules and procedures and communicate those rules to your





children.

- Be considerate of other hotel guests; do not allow your children to run in the hotel corridors, engage in horseplay or be loud in the hotel.

e. Policy Regarding the Conduct of Spectators

It's the expectation of all Canton Minor Hockey spectators to display good sportsmanship towards players, coaches, officials and other spectators while in the rink. Refrain from inappropriate behavior in the stands and keep the overall importance of youth hockey games in the proper perspective.

Examples of good sportsmanship

- Cheer in a positive manner and encourage fair play by both teams
- Help provide a safe and fun environment for all players and officials on the ice
- Support the officials, even when you disagree with their call
 - Remember, your vantage point is not the same as theirs on the ice
 - Recognize that officials have a difficult job
 - Show respect for all officials and trust in their judgment and integrity
- Support and trust your coaches

Examples of poor sportsmanship

- Negative comments directed at opponents, coaches, or officials
- Taunting or disturbing other fans
- Profanity
- Throwing items onto the ice surface
- Pounding on the glass

Be responsible for your own safety. Be alert and pay attention to what is occurring on the ice during a game to avoid injuries from flying pucks.

Respect locker rooms as private areas for players, coaches and officials.

Be supportive before, during and after the game (win or lose) to all





players, coaches and officials. Recognize good effort, teamwork, and sportsmanship.

In the unfortunate event that a parent is ejected from a game by an official, that parent will;

- Be restricted from entering a rink to attend any on-ice activity (practices, scrimmages or games) sponsored by Canton Minor Hockey for 10 weeks from the date of the ejection.
- If the parent enters a rink and violates the 10-week restriction, that parent's restriction will extend through May 1 of the next calendar year.
- If the parent violates the May 1 restriction, both parent and skater(s) will be removed from the team through May 1 of the next calendar year.

Only one condition exists for an appeal to this policy

- If a parent feels they were wrongly identified by the official as the person causing the problem that person must provide proof, in writing to the CMH President as to why they feel they were wrongly identified.
- The CMH President will bring this information to the board to determine next steps.

f. Policy Regarding the Destruction or Damage of Rink Property

Parents and/or guardians will be held financially responsible for any damage to locker room or arena facilities. This includes but not limited to the loss, damage and/or destruction of another player's personal belongings or equipment as a result of inappropriate actions by their child while occupying a locker room facility both home and away. Anyone found responsible for the theft of another player's personal belongings or equipment or rink facility property will be immediately suspended from the organization including but not limited to further actions deemed necessary by the Canton Minor Hockey President.

g. Registration and Payment Policy

Registration will be posted on www.Cantonminorchockey.org prior to the season. If an account is not paid in full by January 10th, the Treasurer shall immediately notify the President and absent a waiver issued by the President, the President shall notify the player's parent in writing or through email that the player is not allowed to practice nor play games until the account balance is paid.





h. Scholarship Policy

Involvement in hockey can be burdensome to the family budget. We do not want to see children blocked from participating due to cost. Therefore, in response to a growing number of requests and in the face of limited financial resources on the part of Canton Minor Hockey the following policy regarding the awarding of scholarship aid has been implemented.

Canton Minor Hockey will award scholarships as financial conditions permit. Recipients will be selected based on the demonstrated financial inability to pay for the total cost of registration for their player. Another factor considered is the volunteerism of the family to the Canton Minor Hockey Association.

Requests must be made verbally to the Canton Minor Hockey President.

All requests will be confidential, and recipients will be notified of the award amount as soon as possible. Except in extraordinary circumstances, the award will be limited to a maximum of 50% of the registration cost.

In addition to scholarships, assistance is also available in providing players with equipment.

i. Reimbursement Policy

Canton Minor Hockey will reimburse coaches and locker room monitors for the following USA hockey expenses.

- USA Hockey registration
- Age specific modules
- Background check
- Note:
 - CMH will not cover expenses for Coaching Education Program (CEP) classes
 - Locker room monitors will register as a Team Manager with USA Hockey and will need to complete a background check. No other training is required for a locker room monitor.

Each coach/locker room monitor will pay for their USA Hockey expenses up front and a payment reimbursement request will be submitted by the head coach once the classes are complete. Information below details the number of coaches & locker room monitors by age group that Canton Minor Hockey





will reimburse for each team each season.

- 8U & Younger
 - Coaches
 - Unlimited number of coaches per team
 - The ADM coordinator and head coach of the 6U and/or 8U program will work together and collectively decide on the number of coaches to be reimbursed each season.
 - The 6U or 8U head coach will submit the payment reimbursement request for the selected coaches.
 - Locker Room Monitors
 - Unlimited locker room monitors per team
 - Follow the same protocol detailed under the coaches' section above.
- 10U & Older
 - Coaches
 - Canton Minor Hockey will reimburse coaching expenses for up to and not to exceed 3 coaches per team.
 - Locker Room Monitors
 - Canton Minor Hockey will reimburse expenses for up to and not to exceed 2 locker room monitors per team.

XVIII. St. Lawrence County and Local Arenas

- a. Canton Pavilion
90 Lincoln St
Canton, NY 13617
(315) 386-3992
- b. Appleton Arena
130 Miner St
Canton, NY 13617
(315) 229-5696
- c. Pine St Arena
43 Pine St
Potsdam, NY 13676
(315) 265-4030
- d. Cheel Arena
Clarkson University





8 Clarkson Ave
Potsdam, NY 13676
(315) 268-7750

- e. Maxcy Hall
SUNY Potsdam
44 Pierrepont Ave
Potsdam, NY 13676
(315) 267-2000
- f. Massena Arena
180 Harte Haven Plaza
Massena, NY 13662
(315) 769-3161
- g. Dominic Zappia Communitie Center
9 Clinton St
Norfolk, NY 13667
(315) 384-3200
- h. Tri-Town Arena
746 St Highway 11C
Brasher Falls, NY 13613
(315) 389-4576
- i. Ogdensburg Golden Dome
1100 State St
Ogdensburg, NY 13669
(315) 393-5220
- j. Lockwood Civic Center
141 W. River St
Ogdensburg, NY 13669
(315) 393-2111
- k. Malone Civic Center
88 State St
Malone, NY 12953
(518) 483-0680
- l. Watertown Municipal Arena
600 William T Field Dr





Watertown, NY 13601
(315) 785-7836

m. Alexandria Bay Municipal Arena
39 Bolton Ave
Alexandria Bay, NY 13607
(315) 482-9360

n. Clayton Recreation Park Arena
East Line Rd
Clayton, NY 13624
(315) 482-9360

o. Salmon River Central Arena
Bombay Rd
Fort Covington, NY 12937
(518) 358-2215

XIX. Revisions

- a. 1/5/22: Section XVII, sub-section e, "Policy Regarding the Conduct of Spectators", added the parent suspension policy and protocol
- b. 5/14/22: Section VII, sub-section d, ii, "Affiliated Player & Dual Rostering", added to handbook
- c. 12/06/23: Section XV, modified language for concession stand requirements, dibs system and fines

