



WILKUS ARCHITECTS P.A.

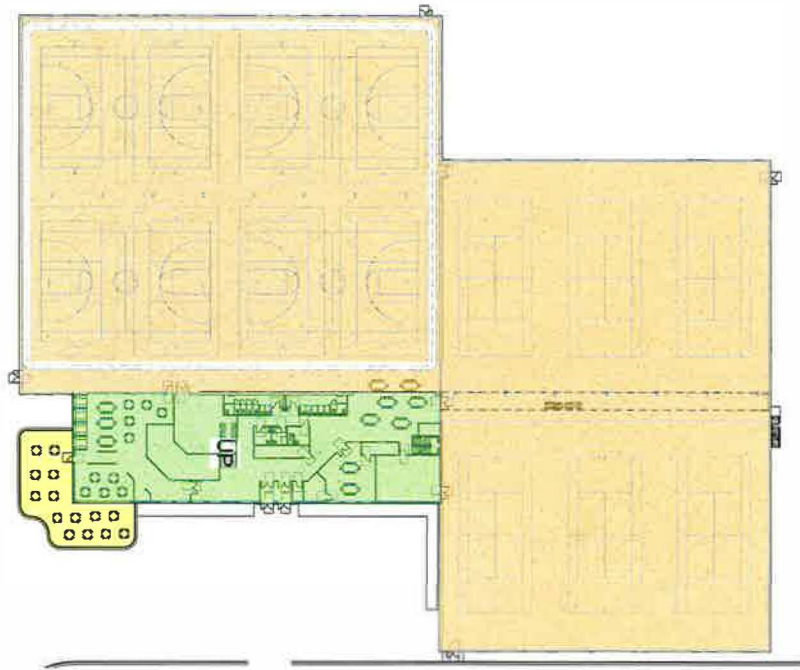
DESIGN TEAM: MATT WILKUS, KYLE
BLISS

PROJECT: CITY OF NORTH
MANKATO SPORTS FACILITY





CONCEPTUAL DESIGN PACKAGE
DATE: APRIL 08, 2019
VERSION - 03

CITY OF NORTH MANKATO - SPORTS FACILITY





LEVEL 1

	LEVEL 1 - COURTS / OPEN AREA	79,139 SF
	LEVEL 1 - CORE/Common AREA	10,084 SF
	LEVEL 1 - OUTDOOR PATIO	2,129 SF
	LEVEL 1 - WALKING PATH	702 LF (7.5 LAPS PER MILE)

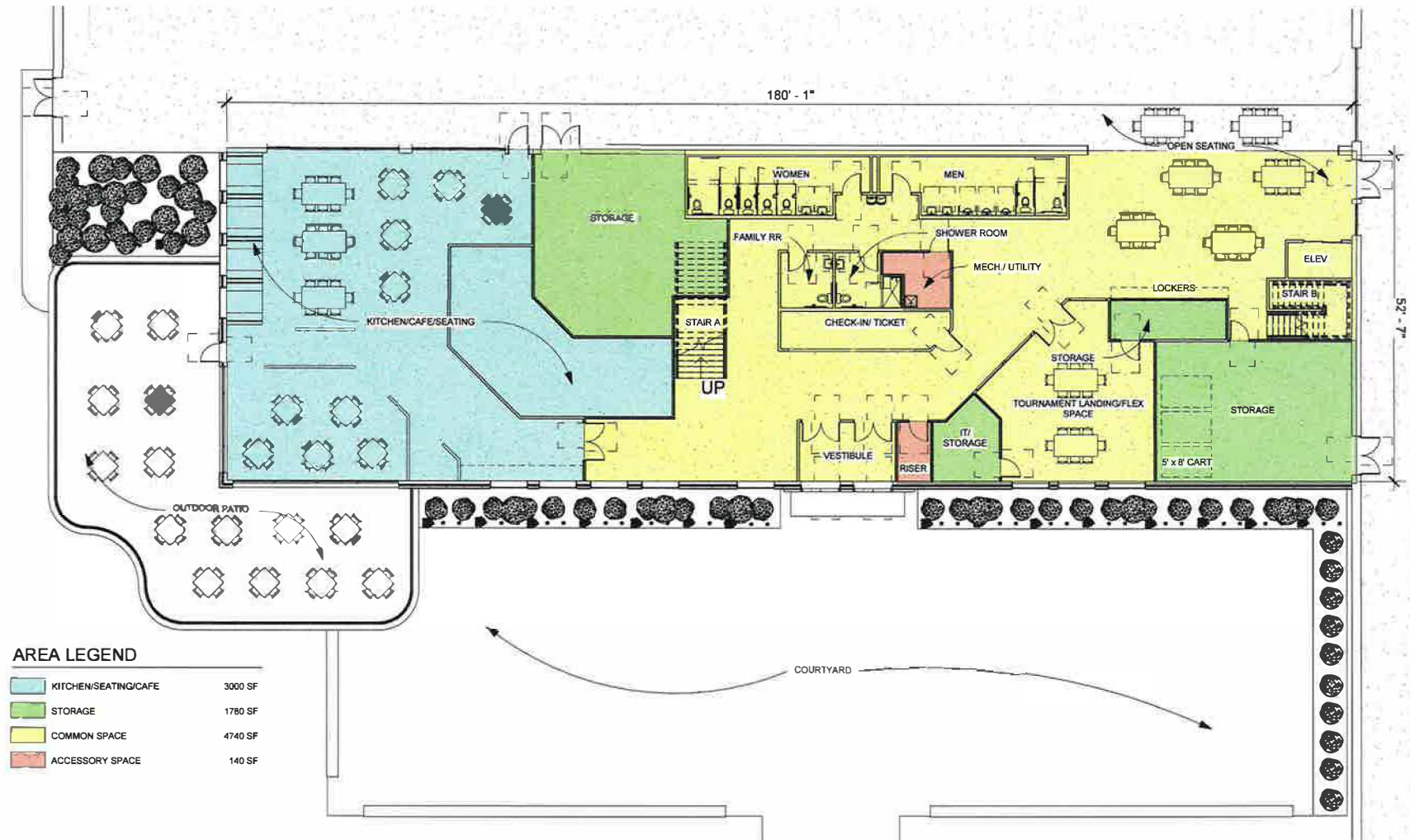


LEVEL 2

	LEVEL 2 - CORE/Common AREA	9,382 SF
	LEVEL 2 - PATIO	706 SF



CITY OF NORTH MANKATO - SPORTS FACILITY



AREA LEGEND

KITCHEN/SEATING/CAFE	3000 SF
STORAGE	1780 SF
COMMON SPACE	4740 SF
ACCESSORY SPACE	140 SF

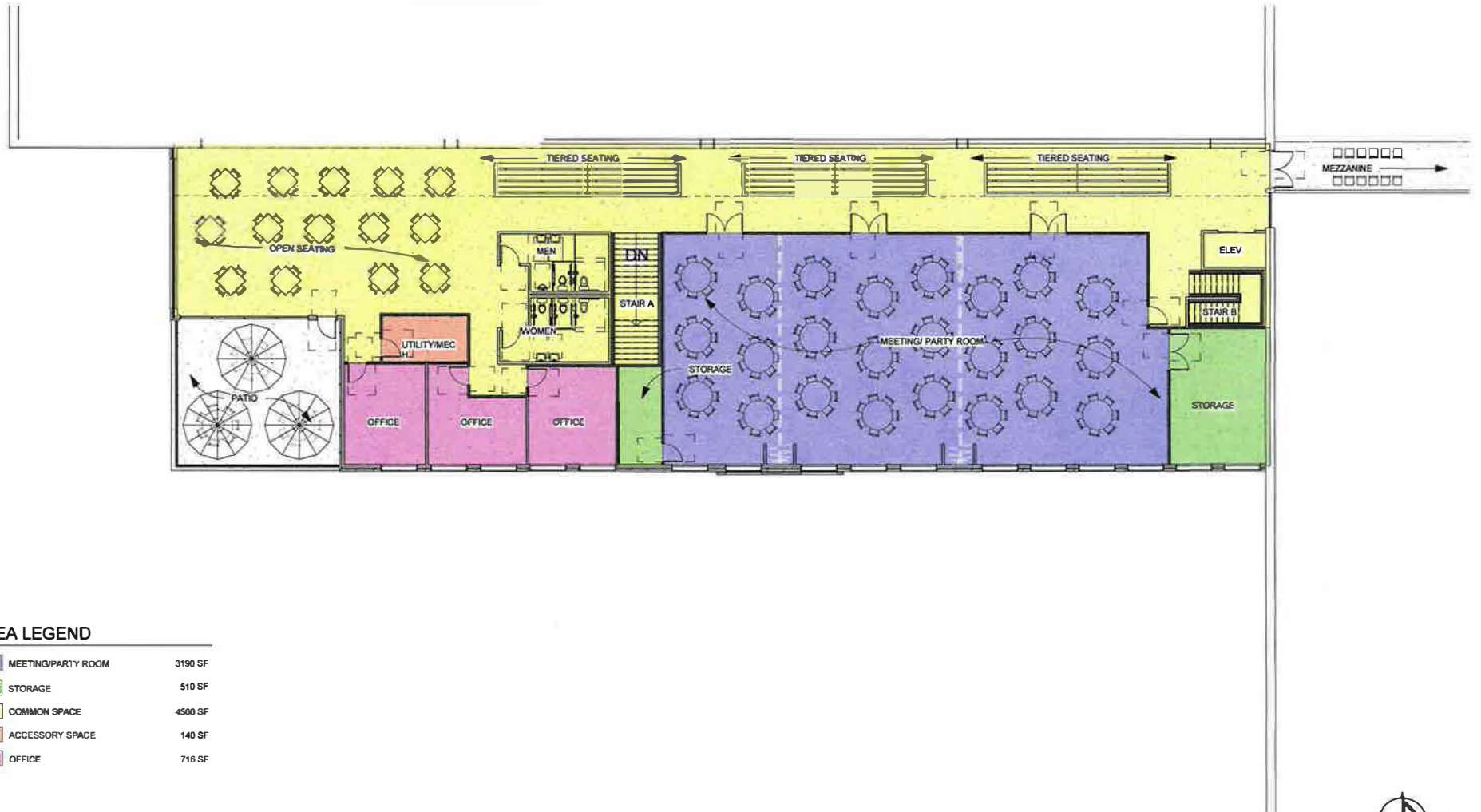


WILKUS ARCHITECTS

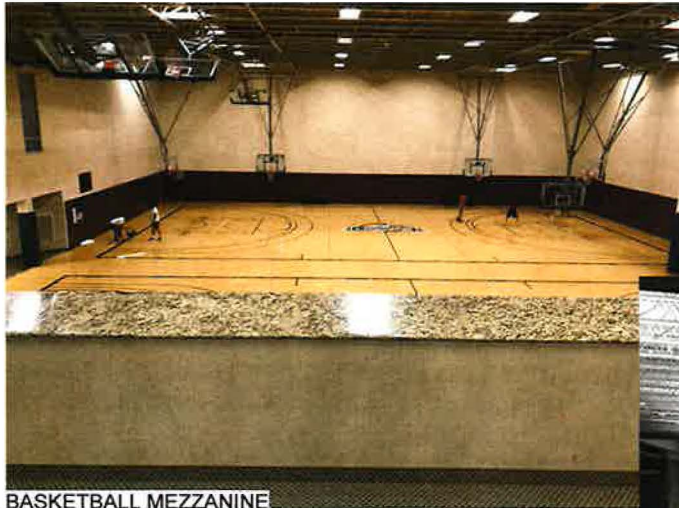
LEVEL 1

2019.04.02
PAGE 3

CITY OF NORTH MANKATO - SPORTS FACILITY



CITY OF NORTH MANKATO - SPORTS FACILITY



BASKETBALL MEZZANINE



TENNIS
MEZZANINE



TYPICAL GLASS VIEWING WALL



TYPICAL OFFICE



BASKETBALL GROUND LEVEL VIEW

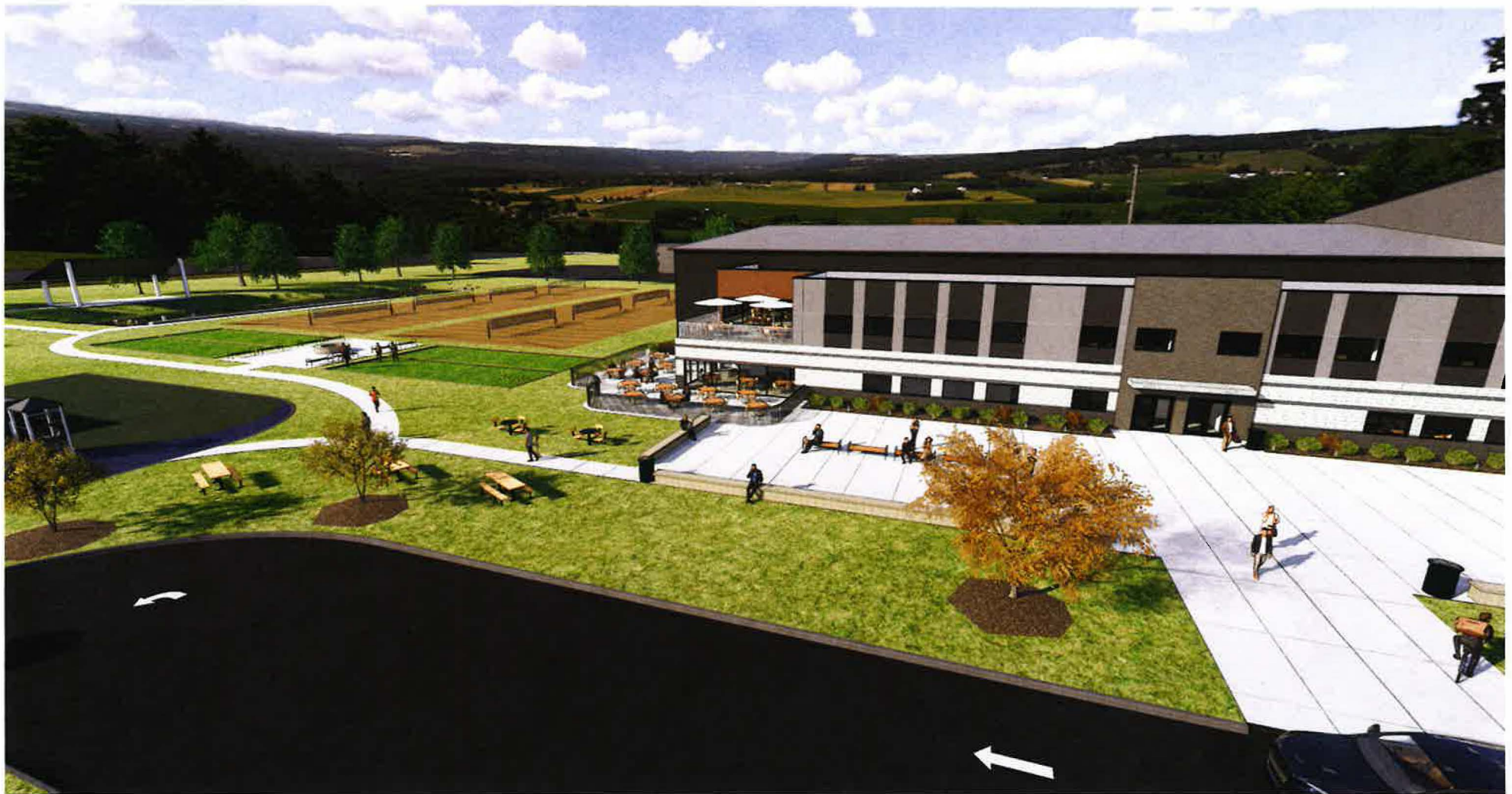


WILKUS ARCHITECTS

INTERIOR INSPIRATION

2019.04.02
PAGE 5







wa

WILKUS ARCHITECTS P.A.

THANK YOU



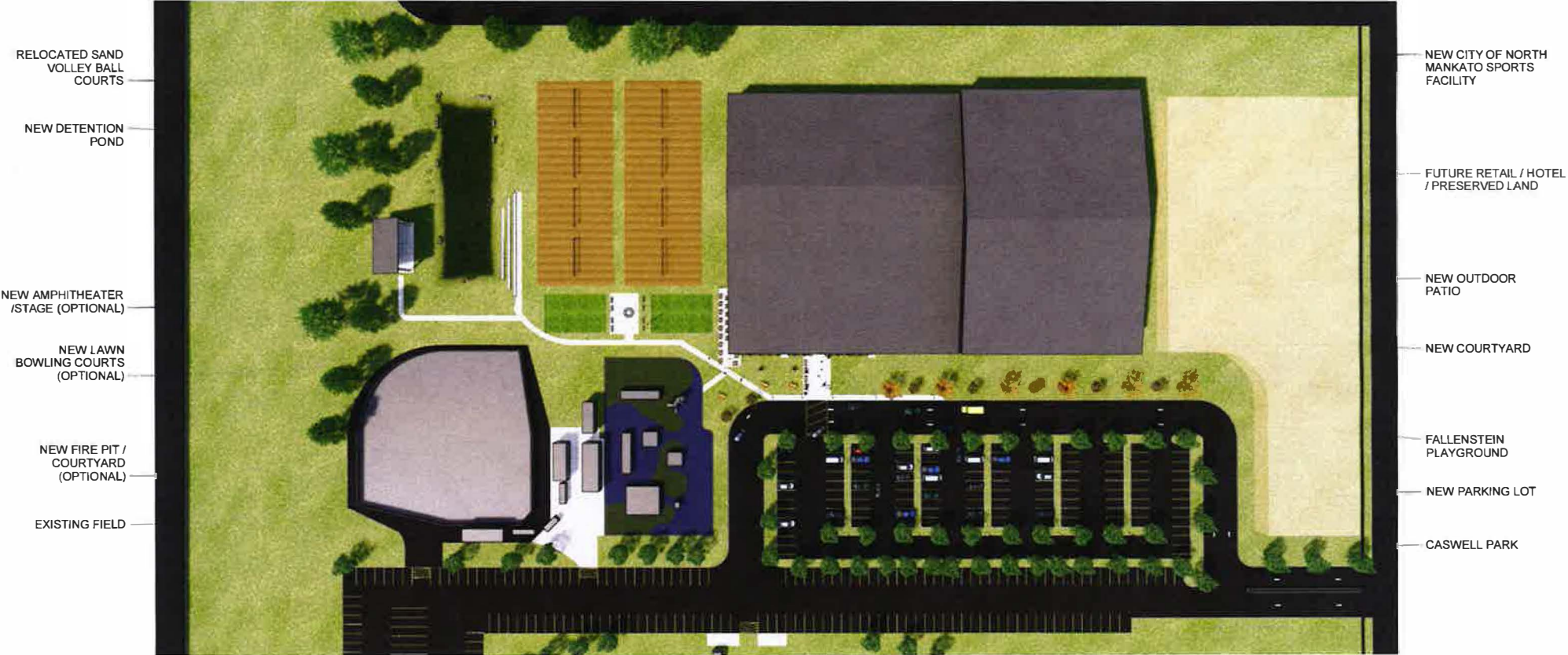
WILKUS ARCHITECTS P.A.

**DESIGN TEAM: MATT WILKUS, KYLE
BLISS**

**PROJECT: CITY OF NORTH
MANKATO SPORTS FACILITY**

**CONCEPTUAL DESIGN PACKAGE
DATE: JULY 24, 2019
VERSION - 03**

CITY OF NORTH MANKATO - SPORTS FACILITY



CITY OF NORTH MANKATO - SPORTS FACILITY

LEGEND

TENNIS COURTS

BASKETBALL/VOLLEYBALL COURTS

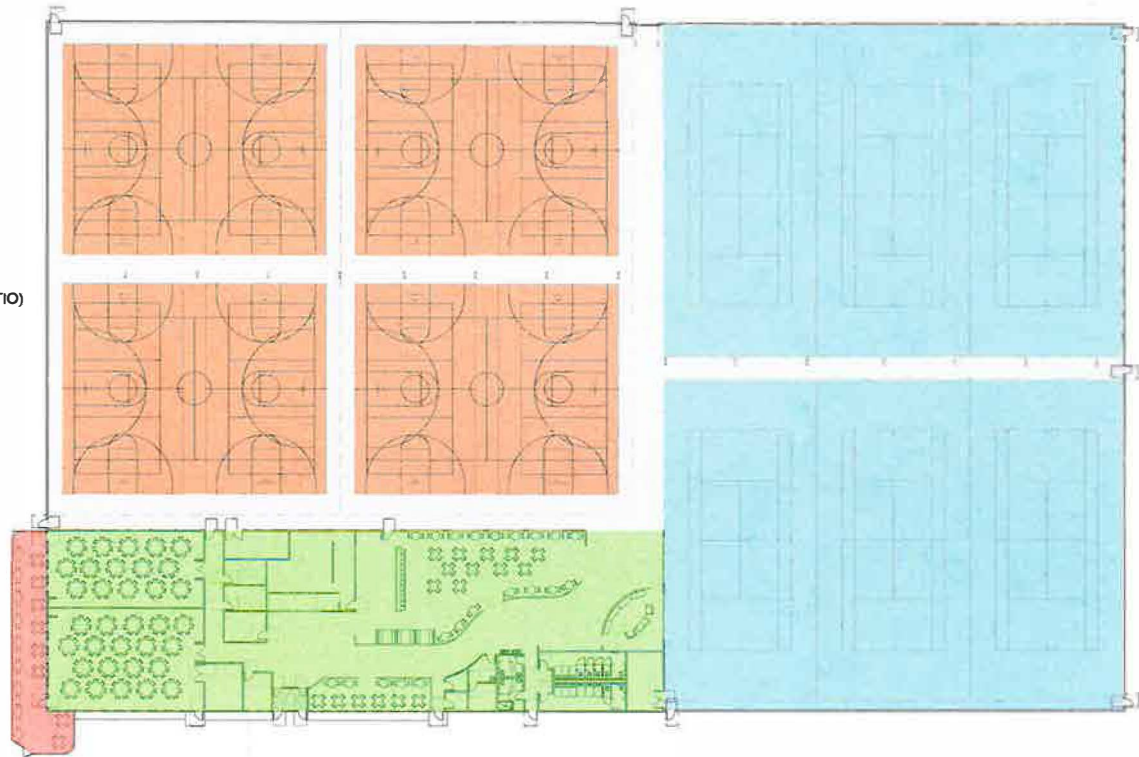
COURT CIRCULATION

CORE/Common

PATIO (OPTIONAL)



TOTAL 92,951 SF (81,866 SF W/ NO PATIO)



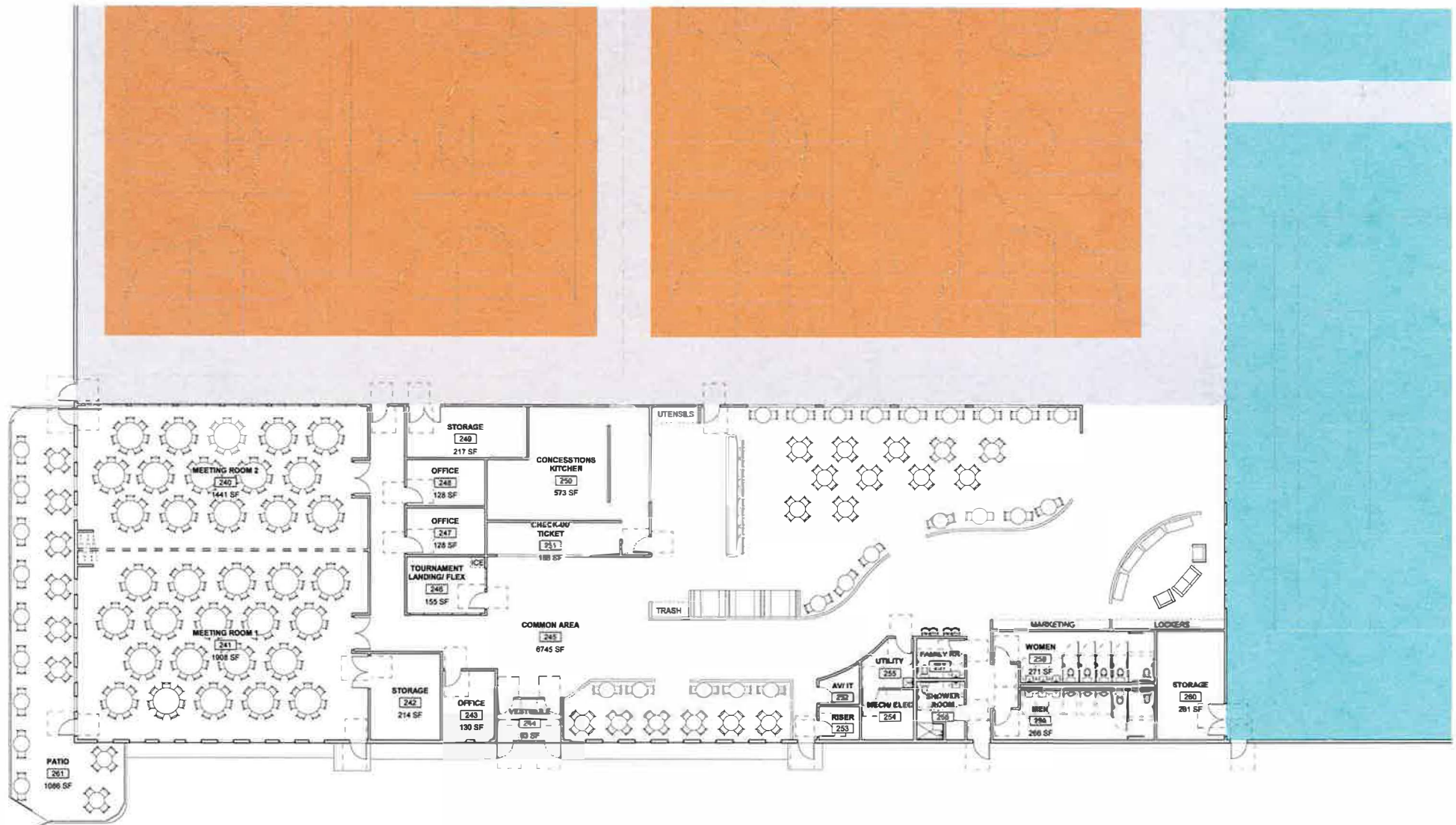
WILKUS ARCHITECTS

PRELIMINARY BUILDING PLAN



2019.07.24
PAGE 2

CITY OF NORTH MANKATO - SPORTS FACILITY

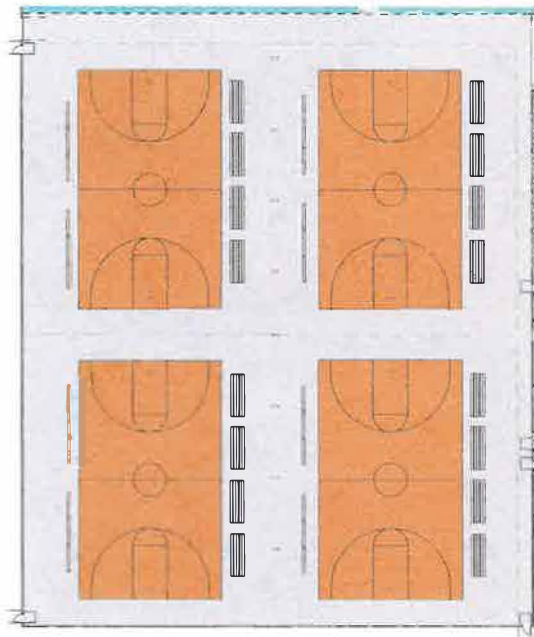


WILKUS ARCHITECTS

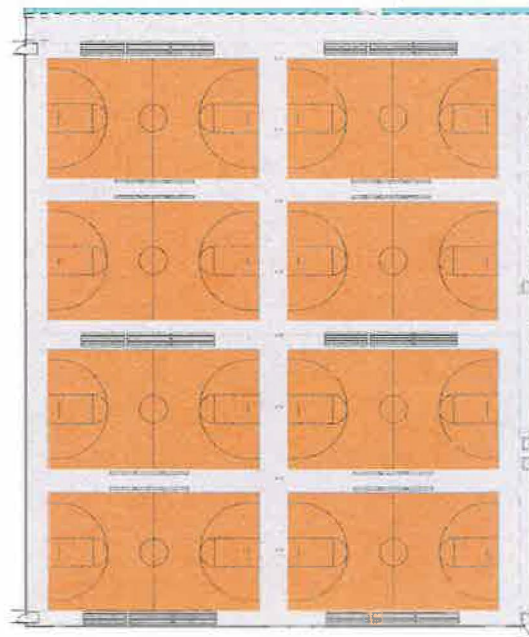
PRELIMINARY FLOOR PLANS

2019.07.24
PAGE 3

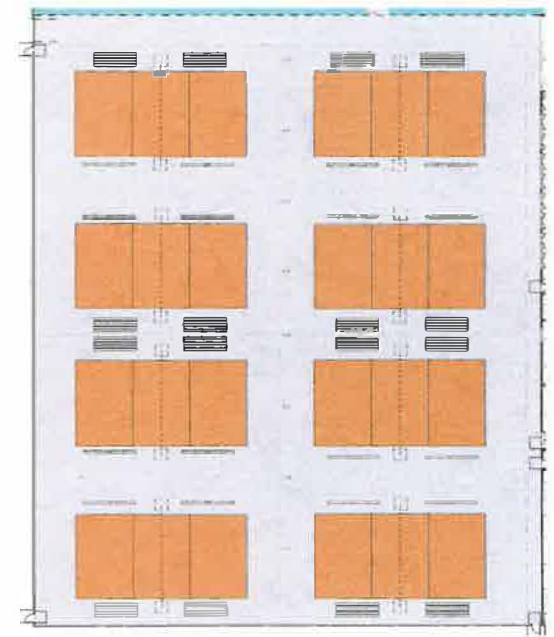
CITY OF NORTH MANKATO - SPORTS FACILITY



HIGH SCHOOL BASKETBALL



MIDDLE SCHOOL/ JUNIOR BASKETBALL



VOLLEYBALL

LEGEND	
9FT PLAYER BENCH	
15FT SPECTATOR 3-TEIR	



CITY OF NORTH MANKATO - SPORTS FACILITY



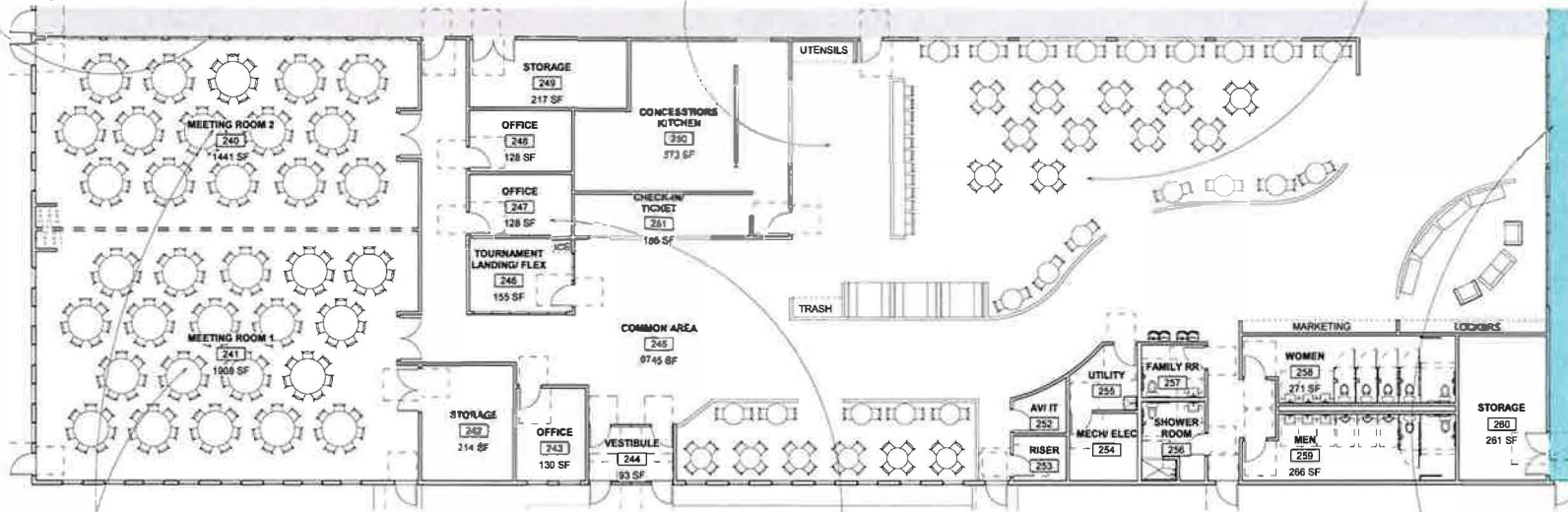
BASKETBALL VIEWING



CONCESSION



OPEN SEATING



MEETING ROOM



OFFICE



TENNIS VIEWING



CITY OF NORTH MANKATO - SPORTS FACILITY



WILKUS ARCHITECTS

PERSPECTIVE VIEW

2019.07.24
PAGE 6

CITY OF NORTH MANKATO - SPORTS FACILITY



WILKUS ARCHITECTS

PERSPECTIVE VIEW

2019.07.24
PAGE 7

CITY OF NORTH MANKATO - SPORTS FACILITY



COUNTY ROAD 13

HIGHWAY 14

CASWELL PARK

NEW CITY OF NORTH
MANKATO SPORTS
FACILITY

HOWARD DRIVE



WILKUS ARCHITECTS

LOCATION AERIAL VIEW

2019.07.24
PAGE 8

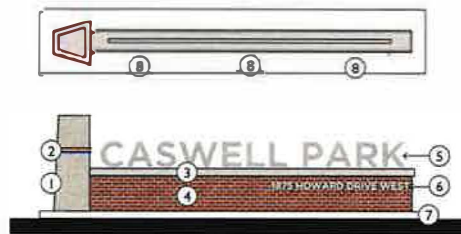


wa

WILKUS ARCHITECTS P.A.

THANK YOU

Entrance Monument Sign

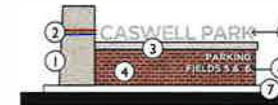
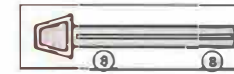


KEY

- ① Precast Concrete Column (Hollow interior)
- ② Steel Accent Bands (Powder coated Red & Blue)
- ③ Precast Concrete Cap
- ④ Brick Cladding
- ⑤ 22" High Lettering
- ⑥ 6" High Lettering (Address and/or Miracle League Field)
- ⑦ Concrete Paving
- ⑧ Uplighting



Secondary Entrance Monument Sign

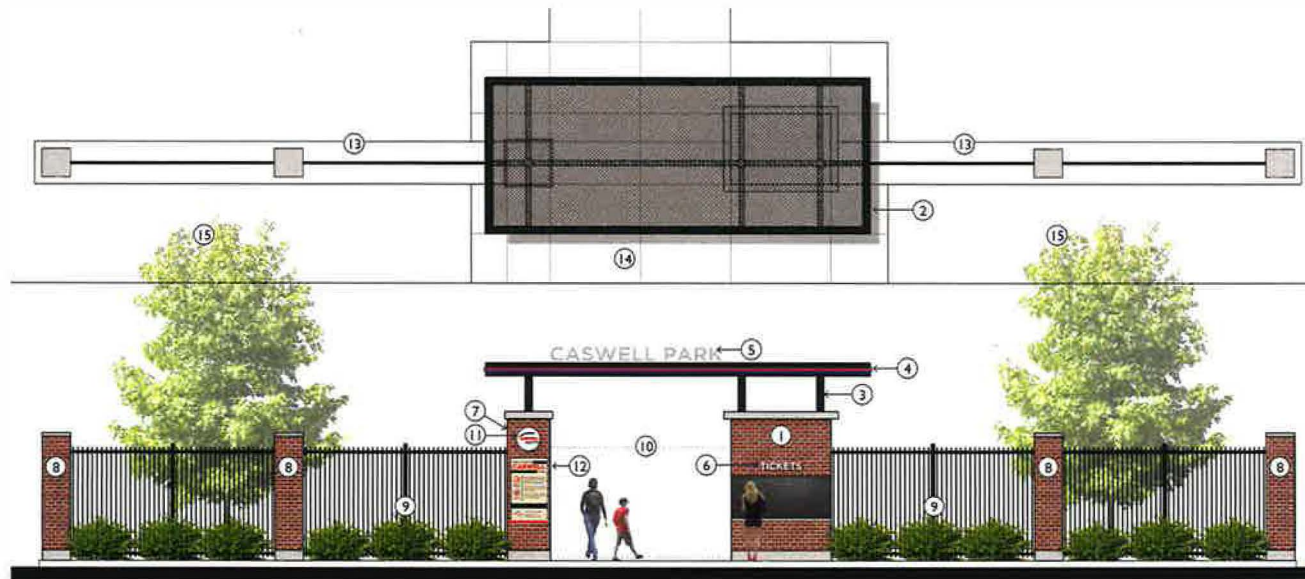


KEY

- ① Precast Concrete Column (Hollow interior)
- ② Steel Accent Bands (Powder coated Red & Blue)
- ③ Precast Concrete Cap
- ④ Brick Cladding
- ⑤ 12" High Lettering
- ⑥ 6" High Lettering (Parking Fields 5 & 6)
- ⑦ Concrete Paving
- ⑧ Uplighting



Gateway Entrance + Ticket booth



KEY

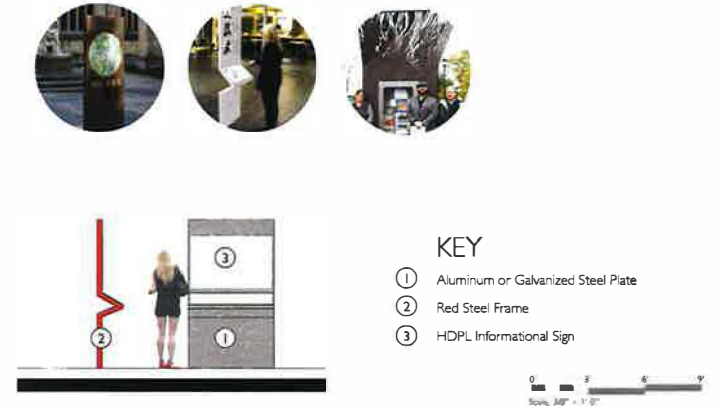
- ① 5' x 7' Ticket booth (windows on 3 sides)
- ② Black Steel frame with Woven Mesh Panel Inset
- ③ 6" x 6" Sq. Tubular Post
- ④ Red Accent Band
- ⑤ 12" High Lettering
- ⑥ 9" High Lettering
- ⑦ 36" Square Column with Brick Cladding Precast and Concrete Cap
- ⑧ 24" Square Column with Brick Cladding
- ⑨ Black Steel Fencing
- ⑩ Gate (hinged)
- ⑪ Facility Emblem
- ⑫ Rules + Policy Sign
- ⑬ 3' Wide Concrete Maintenance Band
- ⑭ Concrete Paving
- ⑮ Landscape Area



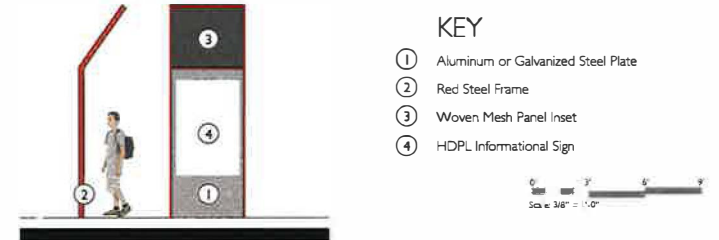
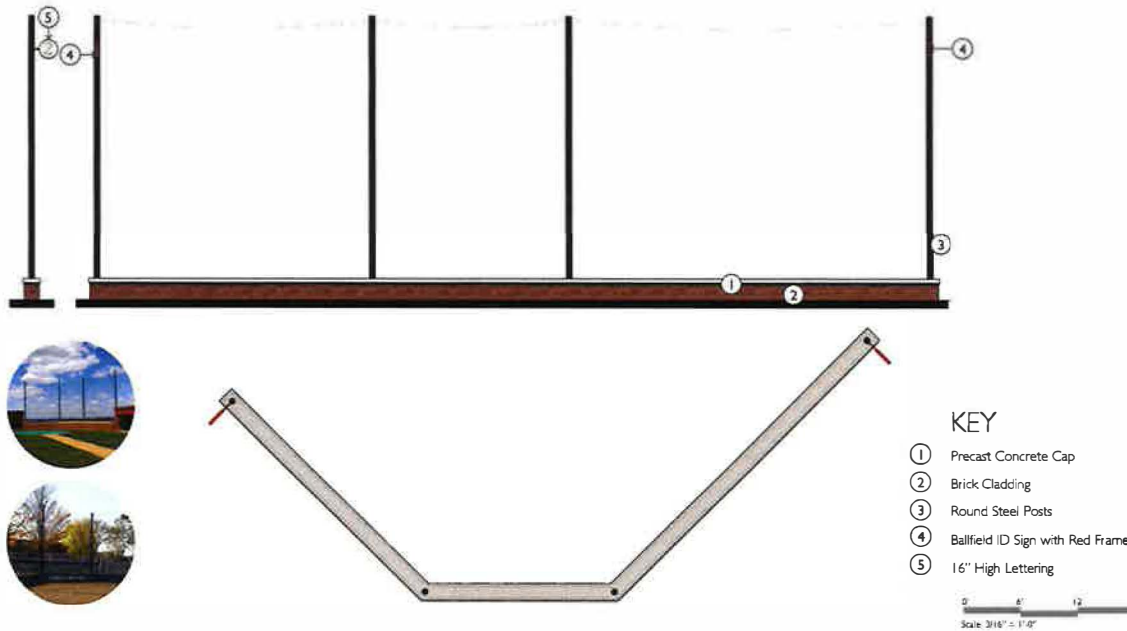
Lighting + Banner System



Informational Kiosk



Ballfield Identification + Backstop Improvements



CASWELL PARK SIGNAGE + BRANDING MASTER PLAN

NORTH MANKATO, MINNESOTA

Building Signage



10" diameter custom high pressure laminate sign with red frame, black background with blue accent band, and white graphics and/or lettering, braille lettering included at bottom of sign.

Caswell Park Logo



Rules + Policy Signage



Building Improvements



- KEY
- 1 Neutral Paint Color for all Lower Level Surfaces
 - 2 Dark Accent Band Between Upper and Lower Levels
 - 3 18" High Lettering
 - 4 Black Steel Fencing with Woven Mesh Infill
 - 5 Existing Red Roofing

Color Palette



Color Palette



Font

Gotham Black

ABCDEFGHIJKLMNOPQRSTUVWXYZ
abcdefghijklmnopqrstuvwxyz
0123456789

Gotham Bold

ABCDEFGHIJKLMNOPQRSTUVWXYZ
abcdefghijklmnopqrstuvwxyz
0123456789

Gotham Medium

ABCDEFGHIJKLMNOPQRSTUVWXYZ
abcdefghijklmnopqrstuvwxyz
0123456789

Gotham Light

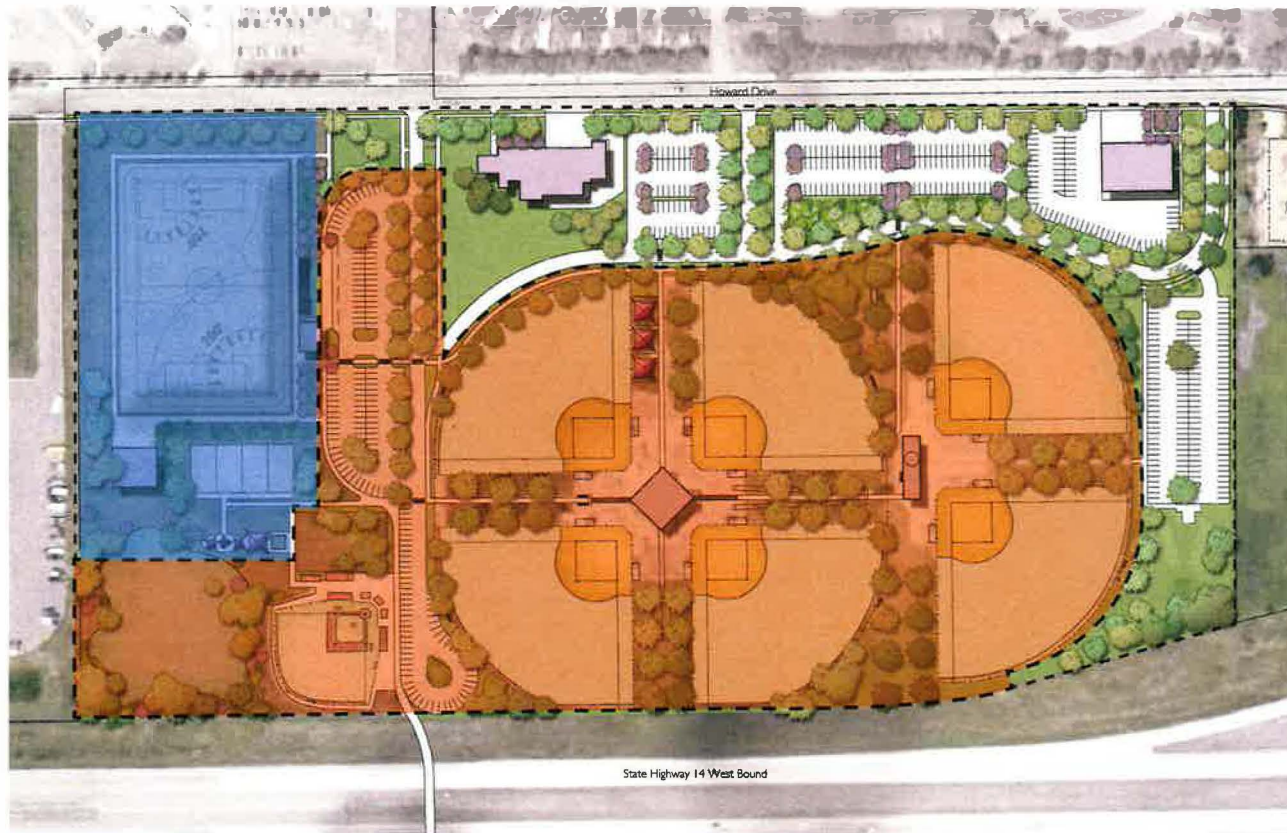
ABCDEFGHIJKLMNOPQRSTUVWXYZ
abcdefghijklmnopqrstuvwxyz
0123456789



CASWELL PARK SIGNAGE + BRANDING MASTER PLAN

NORTH MANKATO, MINNESOTA

PHASING PLAN



IMPROVEMENTS	COST
Field Gateway	\$ 20,000
Information and Wayfinding Kiosk	\$ 30,000
PA System	\$ 30,000
Logo Signage	\$ 36,000
Batting Cage (2)	\$ 40,000
Secondary Building Renovations	\$ 43,200
Additional Spectator Seating	\$ 60,000
Ball Field Storage Building	\$ 69,750
Knee Wall + Backstop Netting	\$ 120,000
Synthetic Turf Replacement	\$ 135,000
Relocate Dugouts (2)	\$ 150,000
Ticket Booth & Gateway (3)	\$ 180,000
Increase Field to 300'	\$ 187,916
Sitework	\$ 205,000
New Scoreboard	\$ 240,000
Field Lighting	\$ 300,000
New Vinyl-Coated Chain-Link Fence	\$ 320,000
Plaza Concrete	\$ 336,000
Parking Lot Improvements	\$ 350,000
Concession Stand Upgrades	\$ 500,000
SUB TOTAL	\$ 3,352,866
TOTAL (Contingency + Design Fees)	\$3,855,795.90

SOFTBALL PHASE
INDOOR PHASE

