

BLAINE HIGH SCHOOL

# BENGAL HOCKEY

2022

2023



**SECTION  
CHAMPS**

1996, 1997, 2001,  
2015 & 2017

**STATE FINALIST**

2001 & 2017

**CONFERENCE  
CHAMPS**

1996, 1997, 2001, 2002,  
2005, 2014 & 2017

RESIDENTIAL & COMMERCIAL \* FLOORING \* TILE \* INTERIOR DESIGN \* RUGS \* WINDOW TREATMENTS \* COUNTERTOPS \* ACCESSORIES




**READERS' CHOICE Award**

ABCNewspapers.com

**For the fourth year and counting!**

**Voted BEST by Anoka County**

**BEST Flooring Store**

**BEST Interior Design &**

**BEST Window Covering Store!**



**OVER 100 SKUS IN STOCK CARPET & LUXURY VINYL SELECTIONS**



763-784-5922  
WWW.ALLAUTO.COM

— **AUTO GLASS INSTALLATION** —

- Windshields •
- Door, Vent & Back Glass •

— **WINDSHIELD REPAIR** —

— **WINDSHIELD CALIBRATION** —

- Static (In-House) •
- Dynamic (Road Test) •

— **MOBILE SERVICE** —

— **WORK WITH ALL INSURANCE COMPANIES** —

— **GREAT CASH PRICES** —



763-434-2756  
WWW.ARKOEXTERIORS.COM

— **ROOFING** —

— **SIDING** —

— **SOFFIT & FASCIA** —

— **GUTTERS & GUTTER GUARDS** —

— **WINDOWS & DOORS** —

— **ICE DAM REMOVAL** —

— **ROOF LEAK** —

— **STORM DAMAGE** —

— **TREE FALLS** —

Free Exterior Inspections



763-434-2756  
WWW.ARKORESTORATION.COM

— **WATER DAMAGE RESTORATION & CLEANING** —

— **FIRE & SMOKE RESTORATION** —

— **ODOR REMOVAL** —

— **CONTENTS CLEANING HANDLING & STORAGE** —

— **SEWER BACK-UP CLEANING** —

— **MOLD REMEDIATION** —

— **TRAUMA** —





O'HARA & HUNTER  
CONSULTING, INC.

THE BEST SERVICE POSSIBLE TO INJURED WORKERS

LICENSED QUALIFIED  
REHABILITATION CONSULTANT FIRM

Providing vocational rehabilitation  
services to injured workers

Medical case management • Transferable skills analysis  
Vocational testing • Job analysis • Job seeking skills training  
Resume preparation • Computerized job matching

[www.oharahunter.com](http://www.oharahunter.com)

550 Village Ctr. Dr., Ste. #200 • North Oaks • 651-483-5506



# Berins

## Mortgage Company

NMLS# 396136

*Getting you on the road to home ownership*



### Berins Enterprises, Inc.

[www.berins.net](http://www.berins.net)

1071 NE County Highway 10, Suite 220

Minneapolis, MN 55432

Phone: 866.783.0536 | 763.783.0536

Fax: 877.783.0543 | 763.783.0543

Berins Enterprises Inc NMLS# 396136 | Charles McQuillan NMLS# 348935



### WE ARE

# VICTORY LINKS

## GOLF COURSE

- The only public course designed by the PGA Tour in Minnesota
- Located on the campus of the National Sports Center
- 18-hole links style Championship Course, with 6 different tee boxes to choose from
- Oversized Driving Range
- 18-hole Tournament Greens Putting Course
- Free short-game practice area
- The First Tee of Blaine chapter site
- Over a dozen league options for all ages and skill levels
- Corporate outing and large group packages available

## Annual host of the PGA Tour's 3M Open Qualifiers

*"This place is legit. The greens are fantastic!" -Brooks Koepka*



763.717.3240

[victorylinks.org](http://victorylinks.org)

# Bengal Hockey Schedules 22 23

DATE	OPPONENT	JV	VARSITY	LOCATION
11/10/22	Champlin Park/Coon Rapids	5:00 pm	7:00 pm	Coon Rapids Ice Center
<b>11/22/22</b>	<b>Elk River</b>	<b>5:00 pm</b>	<b>7:00 pm</b>	<b>Fogerty Arena</b>
11/25/22	Hibbing	7:00 pm	5:00 pm	Grand Rapids IRA
11/26/22	Grand Rapids	11:00 am	1:00 pm	Grand Rapids IRA
<b>12/2/22</b>	<b>Crookston</b>	<b>5:00 pm</b>	<b>7:00 pm</b>	<b>Fogerty Arena</b>
12/3/22	Maple Grove	1:00 pm	3:00 pm	Maple Grove CC
12/6/22	Elk River	5:00 pm	7:00 pm	Elk River Arena
12/8/22	Hill-Murray	3:45 pm	5:30 pm	Aldrich Arena
<b>12/13/22</b>	<b>Rogers</b>	<b>5:00 pm</b>	<b>7:00 pm</b>	<b>Fogerty Arena</b>
12/17/22	Armstrong/Cooper	5:00 pm	7:00 pm	New Hope Arena
12/22/22	Forest Lake	5:00 pm	7:00 pm	Forest Lake Sports Center
<b>12/27/22</b>	<b>Midwinter Border Battle</b>	<b>TBD</b>	<b>TBD</b>	<b>Fogerty Arena</b>
<b>12/28/22</b>	<b>Midwinter Border Battle</b>	<b>TBD</b>	<b>TBD</b>	<b>Fogerty Arena</b>
<b>12/29/22</b>	<b>Midwinter Border Battle</b>	<b>TBD</b>	<b>TBD</b>	<b>Fogerty Arena</b>
1/3/23	Centennial/Spring Lake Park	5:00 pm	7:00 pm	Centennial Arena
1/7/23	Mound Westonka	11:15 am	1:00 pm	Thaler Arena
<b>1/10/23</b>	<b>Anoka</b>	<b>5:00 pm</b>	<b>7:00 pm</b>	<b>Fogerty Arena</b>
<b>1/14/23</b>	<b>Fargo South</b>		<b>5:30 pm</b>	<b>Fogerty Arena</b>
<b>1/17/23</b>	<b>Andover</b>	<b>5:00 pm</b>	<b>7:00 pm</b>	<b>Fogerty Arena</b>
<b>1/24/23</b>	<b>Osseo/Park Center</b>	<b>5:00 pm</b>	<b>7:00 pm</b>	<b>Fogerty Arena</b>
<b>1/26/23</b>	<b>Hastings</b>	<b>5:00 pm</b>	<b>7:00 pm</b>	<b>Fogerty Arena</b>
<b>1/28/23</b>	<b>East Ridge</b>	<b>5:00 pm</b>	<b>7:00 pm</b>	<b>Fogerty Arena</b>
<b>1/31/23</b>	<b>Champlin Park/Coon Rapids</b>	<b>5:00 pm</b>	<b>7:00 pm</b>	<b>Fogerty Arena</b>
<b>2/2/23</b>	<b>Minnetonka</b>	<b>5:00 pm</b>	<b>7:00 pm</b>	<b>Fogerty Arena</b>
<b>2/4/23</b>	<b>Fort Frances</b>		<b>8:00 pm</b>	<b>Fogerty Arena</b>



No.	Name	Pos.	Grade
1	Mandy Larson	G	10
2	Bella Brady	D	10
3	Cici Ledeen	F	10
4	Leah Osendorf	F	10
9	Taylor Olson	F	10
10	Megan Wallin	F	11
11	Jayla Iverson	D	9
12	Gracyn Knowles	F	10
14	McKenna Jacobsen	D	9
15	Jessica McClaren	F	11
16	Miyah Gunter	F	9
17	Bella Slawson	F	10
18	Kendal Dean (C)	D	12
19	Evey Konkler	D	12
20	Paige Nowicki	F	12
22	Kayla Shaffer	D	10
23	Ellie Thompson	D	11
24	Macy Janssen (C)	D	12
25	Megan Miller	D	10
28	Bella Hunter	D	9
29	Grace Chapman	F	11
32	Emily Vogel	F	10
33	Hailey Hansen (C)	G	12
35	Morgan Zenk	G	11

## BLAINE HOCKEY STAFF

**Head Coach:**

Steve Guider

**Assistant Varsity Coaches:**

Tom Maeckelbergh

Calla Athman

Kaitlin Howard

**Physical Therapist:** Joan Bohmert**Athletic Trainer:** Eric Risberg**Principal:** Jason Paske**Activities Director:** Shannon Gerrety**Photographer:** Kathy Jaeger**Strength Coach:** Penny Danks

This contest is being played under the authority of the MSHSL. The MSHSL rules provide for fair play and good sportsmanship among athletes, coaches, and spectators. Since booing and jeering do not support anyone, we encourage you to give positive support to your favorite team. We ask that spectators promote the ideas of good sportsmanship by applauding fair play and by showing respect for all participants and officials.

**SPORTSMANSHIP  
IS EVERYONE'S  
RESPONSIBILITY**



**GOOD LUCK**

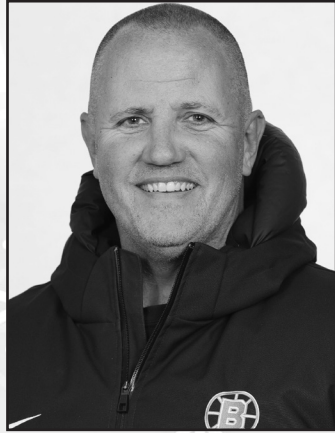
**TO JAYLA AND HER TEAMMATES!  
HAVE A GREAT SEASON!!**

**MINIMIZING RISK  
MAXIMIZING RESULTS**

**HELPING YOU ACHIEVE YOUR GOALS**



# Bengal Girls' Hockey Coaches



Steve Guider  
Head Coach



Calla Athman  
JV Head Coach  
Varsity Forwards



Kaitlin Howard  
JV Assistant Coach



Tom Maeckelbergh  
Varsity Assistant Defensemen



**GOOD LUCK BENGALS!!**

Have a great season from your friends at Pioneer Cycle.  
Your Neighborhood Bicycle Shop

[www.pioneercycle.com](http://www.pioneercycle.com) 763-755-8871

Ken Anderson  
Frank Johnson  
Gregg Johnson  
Randy Thoma

763-755-6750

**PAUL'S BARBER SHOP**  
Creekview Center



1250 126th Ave. NE ~ Suite 200  
Blaine, MN 55434

# Welcome Hockey Fans

## BLAINE HIGH SCHOOL

Home of the Bengals

**763-506-6500**

12555 University Ave NE  
Blaine, MN 55434

Principal  
**Jason Paske**

Activities Director  
**Shannon Gerrety**

Activities Secretary  
**Molly Gamble**

Athletic Trainer  
**Eric Risberg**



It gives me great pleasure to welcome you to tonight's hockey game. Please sit back and enjoy the experience. Let's release the kids to the game and enjoy watching the girls display their skills and talent.

The Blaine girl's hockey team is part of a Blaine High School Activities program that represents our school with class and dignity. The young women work very hard to provide exciting entertainment and to protect the great tradition established at Blaine. The coaching staff is full of dedicated coaches who care more about the players and their development than wins and losses. We are fortunate as a community to have these coaches working with our girls. If you know Coach Guider at all, you know that no one works harder or cares about their players more. He is truly a gift to our program.

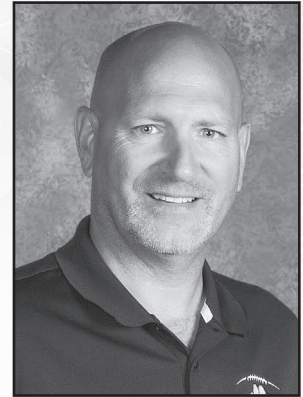
Thank you to all of our families for their sacrifices over the years. It is the true commitment and dedication from you that sets Blaine hockey apart from the rest. I would personally like to thank the parents for the sacrifices they have made over the years that allowed these young women to continue to play a sport they love. Your commitment to them will pay great dividends in the years to come.

So, as you enjoy this year's hockey season, feel the energy generated by our athletes and support them with great enthusiasm and sportsmanship! Join all the fans and enjoy the pageantry, excitement and intensity of Bengal Girl's Hockey.

Celebrate Greatness,

*Shannon Gerrety*

Activities Director, Blaine High School



**Shannon Gerrety**  
Activities Director

[www.ahschools.us/BHS](http://www.ahschools.us/BHS)

# Blaine Support Staff

22



23



**Joan Bohmert**  
Physical Therapist



**Kathy Jaeger**  
Photographer



**Eric Risberg**  
Athletic Trainer



**RentersWarehouse**  
THE PROFESSIONAL LANDLORDS®

**Linda Wallin**  
Rent Estate Advisor

Email: [LWallin@RentersWarehouse.com](mailto:LWallin@RentersWarehouse.com)  
Cell: 612-723-8513  
Office: 952-470-8888

Address: 6101 Baker Rd, Suite 200  
Minnetonka, MN 55345



**Patriot**  
Insurance Agency

Mark W Gilbertson

**President**  
[mwgilbertson@gmail.com](mailto:mwgilbertson@gmail.com)

Office 763.445.2200      9298 Central Ave NE, Ste 422  
[www.patriotinsagency.com](http://www.patriotinsagency.com)      Blaine, MN 55434



**therapy associates**  
growing possABILITIES

**A Great Place  
to Grow**  
Occupational Therapy  
Speech — Mental Health  
Feeding Therapy

13750 Crosstown Dr. NW Suite 106  
Andover, MN 55304



**THERAPY ASSOCIATES INC**  
speech occupational mental health services

[therapyassoc.com](http://therapyassoc.com)  
763.444.8700

THERE'S ALWAYS

HOPE



THERE'S ALWAYS

HELP

Sophie's Squad was founded to improve mental health of athletes from youth to college by raising awareness of mental health issues and removing the stigma associated with seeking help.



Check us out at [sophiessquad.org](https://sophiessquad.org) for more information and mental health resources

 [sophiessquad](https://twitter.com/sophiessquad)  
 [sophiessquad6](https://www.instagram.com/sophiessquad6)



CONTRIBUTE TO  
THE CAUSE

SOPHIE'S SQUAD IS A REGISTERED 501C3 NON-PROFIT ORGANIZATION

## Senior Spotlight

# #18

*Parents names:* Tony and Pam Dean

*Siblings names and ages:* Cody Dean (21)

*Favorite movie:* Endless Love

*Plans after high school:* College undecided but plan to study prenatal ultrasound technician or business & marketing.

*Advice for Underclassmen:* Take in every moment you have with your friends because it goes by fast.

*Pregame ritual:* Get Health Evolution tea before home games, tape my stick, and listen to music.

*Favorite hockey memory:* Grand Rapids tournament freshman year.



# Kendal Dean



Kendal,

Thank you for all the memories! We are so proud of you! Continue to be the person you are. Live, laugh & love! Nothing but the best for our girl.

Love always,

Mom, Dad & Cody

# Hailey Hansen

Senior Spotlight  
#33



## Hailey,

It's hard to believe this is your last year of high school. These last 5 years have flown by.

You are one of kind and we couldn't be prouder of you and your accomplishments in school, sports, and life. We have loved watching you play, and we are grateful for all the wonderful memories, father/daughter dates, great friends/families, and life lessons.

From the moment you put on goalie pads and took your first lesson at Premier Goaltending I knew by the look of determination on your face that this is what you were meant to do.

It has been an honor for us to watch your journey over the years and all that you have accomplished in school and sports; and the lessons you have learned from hockey that you have applied to your life. You were meant to be a Bengal.

You are a person of high character and integrity. You are a good role model for younger people.

Parents names: Randy and Sandy Hansen

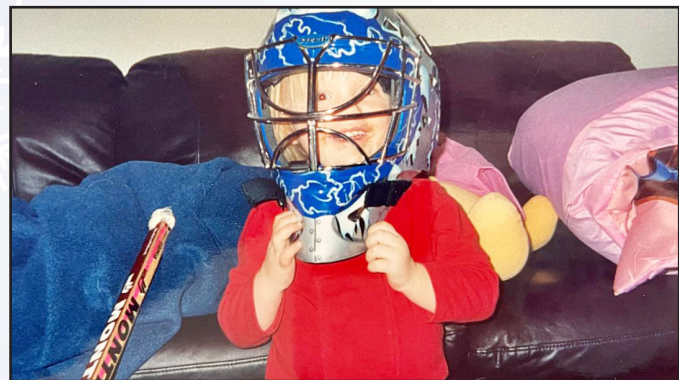
Favorite movie: Lion King

Plans after high school: I plan on attending Minnesota State University of Mankato where I will continue to play hockey, my major is undecided.

Advice for underclassman: Work hard and be a good teammate. Stand up for those that cannot defend themselves. Trust the process and embrace all moments including the bad because it will make you appreciate the good ones even more.

Pregame ritual: My pregame meal consists of eating a Jimmy John's Sandwich with some chips. Then I journal and set goals before every game. Lastly, I do my hand eye coordination routine and pregame visualization.

Favorite hockey memory: Beating Edina my 8th grade season



You are well respected and have received a lot of praise from adults you have encountered at school, on & off the ice, and in our community. Keep on being you.

As this chapter in your life is about to close, know that there are many more chapters to be written and we are excited to see how your story unfolds.

Have a wonderful senior season. Have fun.  
**Love, Mom and Dad**

## Senior Spotlight

# #19

Parents names: Renee and Josh konkler

Siblings names and ages: Wyatt, 15 Owen, 9

Favorite movie: Harry Potter and the Chamber of Secrets

Plans after high school: Art school then career in tattoo art

Advice for Underclassmen: Stay on top of everything, falling behind and playing catch up is stressful and exhausting.

Pregame ritual: Blasting music so loud in my headphones that I can't hear my own thoughts

Favorite hockey memory: Youth tournaments at Breezy Point



# Evey Konkler



Evey -

Even though you got a late start to hockey, it has been so awesome watching you learn and grow and play this sport. We love you and can't believe you are already a senior. Have the best year and leave it all on the ice! We will always be your biggest fans!

Love, Mom & Dad

# Paige Nowicki

## Senior Spotlight #20



Paige

We wish you the best in your senior year! It has been so much fun to watch you grow from the precious 3-year-old making her first adventure onto the ice (picture insert) to this your last year of high school hockey. Enjoy this time with your friends and continue to make more memories.

We are so proud of you and all your accomplishments on and off the ice and being true to yourself. We will always be your biggest fans.

Love Mom & Dad

~~~~~

Enjoy your senior year, it goes fast.  
Miss playing with you!

Love Brooke

Parents names: Mark and Joan Nowicki

Siblings names and ages: Dalton Nowicki (29), Kelly Nowicki (27), Brooke Nowicki (19)

Favorite movie: The Longest Ride or The Last Song

Plans after high school: I plan on going to college and attending a 4 year university, all though I am undecided on where that it is! My hope is to either major in Sports Broadcasting or Interior Design!

Advice for Underclassmen: I know it's a cliché thing to say but enjoy every moment because it truly does go by so fast! The memories you make throughout hockey and high school will be some of the best memories you will have!

Pregame ritual: I usually get Starbucks (strawberry açai refresher with lemonade light ice and no berries :) and Jersey Mikes on my way to the rink! When I get to the rink, I usually eat my food and tape my stick while we watch the first period of the JV game.

Favorite hockey memory: My favorite hockey memory is from u15s when we were up in Duluth for a hockey tournament. Let's just say that the parents were having a little fun during the day and forgot they had to feed us and on top of that one of the dads had sharpened about half the teams skates! So by the time we stepped on the ice we figured out that half the team had no edges and they would all have to take their skates off to get them re sharpened! Shifts turned into 5 minutes long with only having half a bench able to play! Everyone was still hungry though so our parents began throwing candy bars down to the bench so at least we had some type of food! Even though it was an absolute mess that game made for some of the best laughs and memories!



# Senior Spotlight

# #24

# Macy Janssen

**Parents names:** Shane (dad) and Leigh (mom) Janssen

**Siblings names and ages:** Mia Janssen (21), Marlie Janssen (15)

**Favorite movie:** The Last Song

**Plans after high school:** I plan to attend University of Wisconsin-Superior where I am committed to play hockey and study dentistry. I plan to open my own practice in the future!

**Advice for Underclassmen:** If I gave any advice to underclassman it would be to enjoy school and hockey. You only get it once so make the best of it.

**Pregame ritual:** My pregame ritual is getting a jersey mikes sub sandwich and health evo tea. I usually get to the rink and tape my stick right away.

**Favorite hockey memory:** My favorite hockey memory would be when we went to Grand Rapids my freshman year. The group of girls I roomed with were so fun. Sadly, I am only playing with one of those girls now. Shoutout to boo-boo bear.



Macy Victoria –

You amaze us! You are one of those people who make a difference in the world just by being you! The way you approach challenges and overcome the hard things is admirable and you inspire those around you daily. You lead your team by example...by standing up for what is right. These are not abilities that everyone possesses. These are abilities that come when you need to break through a wall of negativity and rise above. Use these abilities this season, this school year, the next years in college and beyond. You are unstoppable!

Thank you for shining your light on us, your teams, your friends, Sophie's Squad and everyone else you grace. You've got this #24!! Go Mathy Go!

Love – Dad, Mom, Mia and Marlie



# Meet the Bengals

**MANDY LARSON**



SOPHOMORE **1** GOALIE

**ISABELLA BRADY**



SOPHOMORE **2** DEFENSE

**CIERRA LEDEEN**



SOPHOMORE **3** FORWARD

**LEAH OSENDORF**



SOPHOMORE **4** FORWARD

**TAYLOR OLSON**



SOPHOMORE **9** FORWARD

**MEGAN WALLIN**



JUNIOR **10** FORWARD

# Meet the Bengals

JAYLA IVERSON



FRESHMAN **11** DEFENSE

GRACYN KNOWLES



SOPHOMORE **12** FORWARD

MCKENNA JACOBSEN



FRESHMAN **14** DEFENSE

JESSICA MCCLAREN



JUNIOR **15** FORWARD

MIYAH GUNTER



FRESHMAN **16** FORWARD

BELLA SLAWSON



SOPHOMORE **17** FORWARD

# Meet the Bengals

**KENDAL DEAN**



SENIOR **18** DEFENSE

**EVEY KONKLER**



SENIOR **19** DEFENSE

**PAIGE NOWICKI**



SENIOR **20** FORWARD

**KAYLA SHAFFER**



SOPHOMORE **22** DEFENSE

**ELLIE THOMPSON**



JUNIOR **23** DEFENSE

**MACY JANSSEN**



SENIOR **24** DEFENSE

# Meet the Bengals



**MEGAN MILLER**



SOPHOMORE **25** DEFENSE

**BELLA HUNTER**



FRESHMAN **28** DEFENSE

**GRACE CHAPMAN**



JUNIOR **29** FORWARD

**EMILY VOGEL**



SOPHOMORE **32** FORWARD

**HAILEY HANSEN**



SENIOR **33** GOALIE

**MORGAN ZENK**



JUNIOR **35** GOALIE

# KH

**KH Promotions**  
khpromotionsmn@gmail.com

Kim Hendrickson  
13206 Jackson Street NE  
Blaine, MN 55434

763-516-7242

**STREET SMART  
DRIVING SCHOOL**



"A PLACE TO START"

**CLASSROOM &  
BEHIND THE WHEEL**

Jessica

612.669.4139

STREETSMARTDRIVINGMN.COM

**\$5 OFF**

ANY LARGE OR X-LARGE PIZZA  
AT REGULAR MENU PRICE

Expires 12/31/23. Blaine location only. Extra toppings, substitutions, extra dipping sauces, dressings, deposit, tax, and delivery additional. Coupon price not subject to change for any reduction in toppings, whether premium or not, sauces, and dressings. Must present coupon. Prices subject to change without notice. Nutrition information available at [JETSPIZZA.com/nutrition](http://JETSPIZZA.com/nutrition)



**BLAINE**  
12410 Aberdeen St. NE  
(763) 754-5387

f t @ JETSPIZZA | JETSPIZZA.COM | #JETSPIZZA

Anand "Fez" Pandey



Office 763.784.1570  
Mobile 612.382.9934



fez@ParkAutoBodyMN.com  
www.ParkAutoBodyMN.com



**Park Auto Body**

Complete Collision  
Repair Services



8094 Central Ave NE • Spring Lake Park, MN 55432

# Blaine Girls' Hockey Highlights

## CAPTAINS

- 22-23 Kendal Dean  
Hailey Hansen  
Macy Janssen
- 21-22 Hailey Hansen  
Macy Janssen  
Kaitlyn Ronn
- 20-21 Brielle Fussy  
Hailey Hansen  
Kaitlyn Ronn
- 19-20 Kayla Blesi  
Brityn Fussy  
Kenzie Sinner
- 18-19 Lauren Driste  
Ramsey Parent
- 17-18 Gabby Rosenthal  
Jaela O'Brien  
Ramsey Parent  
Megan Mckenzie
- 16-17 Paige Beebe  
Emily Brown  
Kenzie Wylie
- 15-16 Paige Beebe  
Emily Brown  
Kenzie Wylie
- 14-15 Emily Brown  
Makayla Tilton
- 13-14 Kiersten Falck  
Katie Swanstrom  
Samantha  
Swanstrom  
Abby Vogel
- 12-13 Alex Barber-  
Verdick  
Kiersten Falck
- 11-12 Erin Harper  
Tara Hoverstad  
Brittany Palmer  
Brittney Thunstrom
- 10-11 Jordan Johnson  
Stephanie Schaber
- 09-10 Breanna Bryand  
Cassy Landborg  
Dani Scholzen  
Megan Steinmetz
- 08-09 Judy Daleiden  
Ashley Tilton  
Lauren Zrust
- 07-08 Bridget Braastad  
Kelley Corkins  
Lauren Zrust
- 06-07 Kelley Corkins  
Ashley Nixon

- 05-06 Ashley Nixon  
Madeline Stoy
- 04-05 Kim Hanlon  
Sammy Nixon  
Breanna Peck
- 03-04 Kristina Bunker  
Jenna Daleiden  
Stefanie Ubl
- 02-03 Kristina Breuhl  
Stefanie Ubl
- 01-02 Tiffany Hagge  
Krista Johnson
- 00-01 Jody Horak  
Christa Hubert
- 99-00 Christa Hubert
- 98-99 Katie Beauduy  
Lindsey Kuehn
- 97-98 Amanda Brandt  
Katie Dierkhising  
Jenny Penner
- 96-97 Bethany Howard  
Laura Tryba
- 95-96 Lindsay Bertie  
Erica Johnson
- 94-95 Lindsay Bertie  
Emily Miller  
Jessica Speller
- 93-94 Tara Joosten  
Emily Miller  
Jessica Speller

## MOST VALUABLE PLAYER

- 21-22 Hailey Hansen
- 20-21 Hailey Hansen
- 19-20 Hailey Hansen
- 18-19 Ramsey Parent
- 17-18 Gabby Rosenthal
- 16-17 Emily Brown
- 15-16 Paige Beebe  
Emily Brown
- 14-15 Makayla Tilton
- 13-14 Kiersten Falck
- 12-13 Kiersten Falck
- 11-12 Tara Hoverstad
- 10-11 Tara Hoverstad
- 09-10 Tara Hoverstad  
Danielle Scholzen
- 08-09 Lauren Zrust
- 07-08 Lauren Zrust
- 06-07 Ashley Nixon
- 05-06 Ashley Nixon
- 04-05 Sammy Nixon

- 03-04 Kristina Bunker
- 02-03 Kristina Bunker
- 01-02 Tiffany Hagge
- 00-01 Jody Horak
- 99-00 Tiffany Hagge  
Jody Horak
- 98-99 Katie Beauduy
- 97-98 Katie Beauduy
- 96-97 Katie Beauduy  
Laura Tryba
- 95-96 Laura Tryba
- 94-95 Laura Tryba

## OUTSTANDING OFFENSE

- 21-22 Shelby Sandberg
- 20-21 Brielle Fussy
- 19-20 Dani Brunette
- 18-19 Ramsey Parent
- 17-18 Gabby Rosenthal
- 16-17 Paige Beebe  
Gabby Rosenthal
- 15-16 Paige Beebe
- 14-15 Paige Beebe
- 13-14 Amy Schlagel
- 12-13 Kiersten Falck
- 11-12 Kiersten Falck
- 10-11 Brittney Thunstrom
- 09-10 Brittney Thunstrom
- 08-09 Lauren Zrust
- 07-08 Lauren Zrust
- 06-07 Lauren Zrust
- 05-06 Lauren Zrust
- 04-05 Sammy Nixon
- 03-04 Kristina Bunker  
Sammy Nixon
- 02-03 Kristina Bunker  
Sammy Nixon
- 01-02 Kristina Bunker  
Tiffany Hagge
- 00-01 Kristina Bunker  
Tiffany Hagge
- 99-00 Kristina Bunker
- 98-99 Tiffany Hagge
- 97-98 Katie Dierkhising
- 96-97 Laura Tryba
- 95-96 Erica Johnson
- 94-95 Lindsay Bertie

## OUTSTANDING DEFENSE

- 21-22 Kaitlyn Ronn
- 20-21 Kaitlyn Ronn

- 19-20 Kaitlyn Ronn
- 18-19 Lauren Driste
- 17-18 DeAnna LeMire
- 16-17 Emily Brown  
Kenzie Wylie
- 15-16 Emily Brown
- 14-15 Emily Brown
- 13-14 Emily Brown
- 12-13 Abby Vogel
- 11-12 Erin Harper
- 10-11 Erin Harper
- 09-10 Danielle Scholzen
- 08-09 Ashley Tilton
- 07-08 Ashley Tilton
- 06-07 Ashley Tilton
- 05-06 Nicole Erickson  
Ashely Nixon
- 04-05 Kim Hanlon
- 03-04 Kim Hanlon  
Madeline Stoy  
Stefanie Ubl
- 02-03 Jenna Daleiden  
Kim Hanlon  
Stefanie Ubl
- 01-02 Krista Johnson
- 00-01 Andrea Jensrud
- 99-00 Andrea Jensrud
- 98-99 Lindsey Kuehn
- 97-98 Lindsey Kuehn
- 96-97 Lindsey Kuehn
- 95-96 Emily Miller
- 94-95 Emily Miller

## MOST DEDICATED PLAYER

- 21-22 Hailey Hansen
- 20-21 Brielle Fussy  
Hailey Hansen
- 19-20 Brityn Fussy
- 18-19 Hailey Hansen
- 17-18 Megan McKenzie
- 16-17 Emily Brown  
Courtney Moser
- 15-16 Emily Brown
- 14-15 Emily Brown
- 13-14 Kiersten Falck
- 12-13 Kiersten Falck
- 11-12 Kiersten Falck  
Brittany Palmer
- 10-11 Brittany Palmer
- 09-10 Danielle Scholzen
- 08-09 Danielle Scholzen
- 07-08 Danielle Scholzen

- 06-07 Kelley Corkins
- 05-06 Madeline Stoy
- 04-05 Sammy Nixon
- 03-04 Kristina Bunker
- 02-03 Kristina Bunker  
Stefanie Ubl
- 01-02 Tiffany Hagge
- 00-01 Kristina Bunker  
Tiffany Hagge
- 99-00 Christa Hubert
- 98-99 Katie Beauduy  
Kyla Murphy
- 97-98 Katie Beauduy  
Kyla Murphy
- 96-97 Katie Beauduy  
Laura Tryba
- 95-96 Erica Johnson
- 94-95 Erica Johnson

## MOST IMPROVED

- 21-22 Isabella Brady
- 20-21 Maya Anderson  
Macy Janssen
- 19-20 Tess Enlow
- 18-19 Alli Hillman
- 17-18 Morgan Reimann
- 16-17 Miranda Zepeda
- 15-16 Abby Jones
- 14-15 Gina Rosvold
- 13-14 Makayla Tilton
- 12-13 Alisa Wolens
- 11-12 Breanna Mahoney
- 10-11 Hailey Lachinski
- 09-10 Jackie Deline
- 08-09 Jackie Deline
- 07-08 Jenna Johnson
- 06-07 Jessica Pafko
- 05-06 Ashley Berlin
- 04-05 Judy Daleiden
- 03-04 Alyssa Wilson
- 02-03 Sarah  
Herschberger  
Alyssa Wilson
- 01-02 Shannon Nelson
- 00-01 Jenna Daleiden
- 99-00 Stefanie Ubl
- 98-99 Andrea Jensrud
- 97-98 Kate Lindsey
- 96-97 Shannon Adams  
Bethany Howard
- 95-96 Amanda Brandt
- 94-95 Katie Dierkhising

# Blaine Girls' Hockey Highlights

22



23

## ROOKIE OF THE YEAR

- 21-22 Isabella Brady
- 20-21 None Selected
- 19-20 Macy Janssen  
Shelby Sandberg
- 18-19 Dani Brunette
- 17-18 Brityn Fussy
- 16-17 Not Awarded
- 15-16 Jaela O'Brien
- 14-15 Gabby Rosenthal
- 13-14 Paige Beebe  
Emily Brown
- 12-13 Amy Schlagel
- 11-12 Abby Vogel
- 10-11 Kiersten Falck
- 09-10 Tara Hoverstad
- 08-09 Andrea Ohmann  
Brittany Palmer
- 07-08 Cassy Landborg
- 06-07 Abby Sinn
- 05-06 Ashley Tilton
- 04-05 Ashley Nixon  
Lauren Zrust
- 03-04 Molly Molitor
- 02-03 Katie Brovold  
Madeline Stoy
- 01-02 Shannon Nelson
- 00-01 Krista Johnson
- 99-00 Samantha Nixon
- 98-99 Kristina Bunker  
Andrea Jensrud
- 97-98 Christa Hubert
- 96-97 Jenny McCall
- 95-96 Katie Beauduy  
Lindsey Kuehn

## ALL-CONFERENCE

- 21-22 Hailey Hansen  
Kaitlyn Ronn  
Shelby Sandberg
- 20-21 Maddie Andrie  
Brielle Fussy  
Hailey Hansen  
Macy Janssen  
Kaitlyn Ronn
- 19-20 Kayla Blesi  
Dani Brunette  
Brityn Fussy  
Hailey Hansen  
Kaitlyn Ronn
- 18-19 Lauren Driste

- Hailey Hansen  
Ramsey Parent
- 17-18 Abby Jones  
Jaela O'Brien  
Ramsey Parent  
Gabby Rosenthal
- 16-17 Paige Beebe  
Emily Brown  
Courtney Moser  
Ramsey Parent  
Gabby Rosenthal  
Kenzie Wylie
- 15-16 Paige Beebe  
Emily Brown  
Courtney Moser  
Ramsey Parent  
Gabby Rosenthal  
Kenzie Wylie
- 14-15 Paige Beebe  
Emily Brown  
Makayla Tilton  
Alisa Wolens
- 13-14 Paige Beebe  
Emily Brown  
Kiersten Falck  
Amy Schlagel  
Katie Swanstrom  
Samantha  
Swanstrom  
Makayla Tilton
- 12-13 Alexandra Barber-  
Verdick  
Kiersten Falck  
Amy Schlagel  
Katie Swanstrom  
Samantha  
Swanstrom
- 11-12 Kiersten Falck  
Erin Harper  
Tara Hoverstad  
Samantha  
Swanstrom
- 10-11 Kiersten Falck  
Erin Harper  
Tara Hoverstad  
Brittney Thunstrom
- 09-10 Danielle Scholzen  
Brittney Thunstrom
- 08-09 Judy Daleiden  
Andrea Ohmann  
Brittany Palmer  
Danielle Scholzen  
Megan Steinmetz  
Lauren Zrust

- 07-08 Kelley Corkins  
Judy Daleiden  
Danielle Scholzen  
Ashley Tilton  
Lauren Zrust
- 06-07 Kelley Corkins  
Judy Daleiden  
Ashley Nixon  
Ashley Tilton  
Lauren Zrust
- 05-06 Shannon Nelson  
Ashley Nixon
- 04-05 Nicole Erikson  
Kim Hanlon  
Kaitlin Howard  
Ashley Nixon  
Sammy Nixon
- 03-04 Kristina Bunker  
Jenna Daleiden  
Kim Hanlon  
Sammy Nixon  
Stefanie Ubl
- 02-03 Kristina Bunker  
Kim Hanlon  
Sammy Nixon  
Stefanie Ubl
- 01-02 Kristina Bunker  
Tiffany Hagge  
Krista Johnson  
Becca Perez
- 00-01 Kristina Bunker  
Tiffany Hagge  
Jody Horak  
Andrea Jensrud  
Krista Johnson
- 99-00 Kristina Bunker  
Tiffany Hagge  
Jody Horak
- 98-99 Katie Beauduy  
Tiffany Hagge  
Lindsey Kuehn
- 97-98 Katie Beauduy  
Katie Dierkhising  
Tiffany Hagge  
Lindsey Kuehn
- 96-97 Katie Beauduy  
Amanda Brandt  
Katie Dierkhising  
Lindsey Kuehn  
Laura Tryba
- 95-96 Katie Beauduy  
Lindsay Bertie  
Erica Johnson  
Emily Miller

- Laura Tryba
- 94-95 Lindsay Bertie  
Erica Johnson  
Laura Tryba

## ALL-CONFERENCE (HONORABLE MENTION)

- 21-22 Maddie Andrie  
Macy Janssen
- 20-21 Grace Bautch  
Shelby Sandberg
- 19-20 Maddie Andrie  
Brielle Fussy
- 18-19 Dani Brunette  
Brityn Fussy
- 17-18 DeAnna LeMire  
Megan McKenzie
- 16-17 Sam Auman  
Sarah Ganley
- 15-16 Sam Auman
- 14-15 Courtney Moser  
Gabby Rosenthal  
Kenzie Wylie
- 13-14 Breanna Mahoney
- 12-13 Courtney Jensrud  
Abby Vogel
- 11-12 Alex Barber-  
Verdick  
Katie Swanstrom
- 10-11 Katie Swanstrom  
Sam Swanstrom
- 09-10 Jackie Deline  
Tara Hoverstad  
Andrea Ohmann
- 08-09 Brittney Thunstrom  
Ashley Tilton
- 07-08 Brittany Beaudette  
Abby Sinn
- 06-07 Katie Brovold
- 05-06 Katie Brovold  
Nicole Erikson  
Madeline Stoy  
Lauren Zrust
- 04-05 Katie Brovold
- 03-04 Madeline Stoy
- 02-03 Kristina Breuhl  
Jenna Daleiden
- 01-02 Kristina Breuhl  
Samantha Nixon
- 00-01 Christa Hubert  
Rebecca Perez
- 99-00 Christa Hubert  
Andrea Jensrud

- 98-99 Christa Hubert  
Andrea Jensrud
- 97-98 Christa Hubert  
Jenny McCall
- 96-97 Jenny Penner  
Kim Oseth
- 95-96 Lindsey Kuehn  
Jodi Stepaniak
- 94-95 Emily Miller  
Jessica Speller

## METRO PLAYER OF THE YEAR

- 00-01 Jody Horak

## ALL-METRO

- 21-22 Hailey Hansen
- 16-17 Emily Brown
- 15-16 Emily Brown
- 06-07 Ashley Nixon
- 03-04 Kristina Bunker
- 02-03 Kristina Bunker
- 01-02 Tiffany Hagge
- 00-01 Tiffany Hagge  
Jody Horak
- 99-00 Jody Horak
- 98-99 Katie Beauduy
- 96-97 Laura Tryba
- 95-96 Emily Miller  
Laura Tryba
- 94-95 Laura Tryba

## ALL-METRO (SECOND TEAM)

- 08-09 Lauren Zrust
- 04-05 Kim Hanlon  
Sammy Nixon
- 03-04 Stefanie Ubl
- 00-01 Kristina Bunker
- 97-98 Katie Beauduy

## ALL-METRO (THIRD TEAM)

- 20-21 Hailey Hansen
- 15-16 Paige Beebe
- 13-14 Kiersten Falck
- 07-08 Lauren Zrust
- 05-06 Ashley Nixon

## ALL-METRO (HONORABLE MENTION)

- 96-97 Katie Beauduy
- 95-96 Katie Beauduy  
Lindsay Bertie

# Blaine Girls' Hockey Highlights

Erica Johnson  
94-95 Lindsay Bertie  
Erica Johnson  
Emily Miller

## ALL-STATE

21-22 Hailey Hansen  
20-21 Hailey Hansen  
19-20 Hailey Hansen  
18-19 Ramsey Parent  
17-18 Gabby Rosenthal  
16-17 Paige Beebe  
Emily Brown  
Gabby Rosenthal

15-16 Paige Beebe  
Emily Brown  
13-14 Kiersten Falck  
12-13 Kiersten Falck

08-09 Lauren Zrust  
06-07 Ashley Nixon  
05-06 Ashley Nixon  
04-05 Kim Hanlon  
Sammy Nixon

03-04 Kristina Bunker  
Stefanie Ubl  
02-03 Kristina Bunker  
01-02 Kristina Bunker  
Tiffany Hagge  
Krista Johnson

00-01 Kristina Bunker  
Tiffany Hagge  
Jody Horak  
Andrea Jensrud

99-00 Tiffany Hagge  
Jody Horak  
98-99 Katie Beauduy  
97-98 Katie Beauduy  
96-97 Katie Beauduy  
Laura Tryba  
95-96 Emily Miller  
Laura Tryba  
94-95 Laura Tryba

## ALL-STATE (HONORABLE MENTION)

17-18 Ramsey Parent  
16-17 Ramsey Parent  
14-15 Paige Beebe  
Emily Brown  
13-14 Amy Schlagel  
Samantha  
Swanstrom  
09-10 Tara Hoverstad

Danielle Scholzen  
08-09 Dani Scholzen  
07-08 Lauren Zrust  
04-05 Ashley Nixon  
03-04 Kim Hanlon  
Sammy Nixon

02-03 Kim Hanlon  
Sammy Nixon  
Stefanie Ubl  
99-00 Kristina Bunker  
98-99 Lindsey Kuehn  
94-95 Emily Miller

## ALL PIONEER PRESS TEAM

14-15 Emily Brown  
13-14 Kiersten Falck  
12-13 Kiersten Falck

## ACADEMIC ALL-STATE

21-22 Maddie Andrlé  
Tess Enlow  
Brooke Nowicki  
Hannah Rehrauer

20-21 Natalie Danielson  
19-20 Brenna Rabe  
Kayla Stumo

18-19 Lauren Driste  
Ramsey Parent  
17-18 Abby Jones  
Rachel Lentner  
Gabby Rosenthal

16-17 Emily Brown  
Tayah Lindsay  
Gina Rosvold  
Megan Treece  
Kirstie Ziegler  
13-14 Tarrah Callahan  
Kiersten Falck  
Breanna Mahoney  
Samantha  
Swanstrom

12-13 Haley Warmuth  
11-12 Erin Harper  
Tara Hoverstad

10-11 Jordan Johnson  
06-07 Jillian Daleiden  
04-05 Breanna Peck  
01-02 Krista Johnson  
Sarah Hennum  
00-01 Christa Hubert  
Jennifer Reed

98-99 Shannon Adams  
Katie Beauduy

## STATE ALL-TOURNAMENT TEAM

16-17 Paige Beebe  
Emily Brown  
Kenzie Wylie  
14-15 Emily Brown  
00-01 Kristina Bunker  
Tiffany Hagge  
Jody Horak  
Andrea Jensrud

96-97 Katie Beauduy  
Laura Tryba

95-96 Katie Beauduy  
Laura Tryba

## MIKE GUIDER AWARD

21-22 Tess Enlow  
20-21 Brielle Fussy  
19-20 Brityn Fussy  
18-19 Ramsey Parent  
17-18 Abby Jones  
16-17 Kenzie Wylie  
15-16 Kate Wehr  
14-15 Alisa Wolens  
13-14 Kiersten Falck  
12-13 Courtney Jensrud  
11-12 Erin Harper  
10-11 Stephanie Schaber  
09-10 Danielle Scholzen  
08-09 Lauren Zrust  
07-08 Brooklyne Fussy  
06-07 Ashley Nixon  
05-06 Madeline Stoy  
04-05 Sammy Nixon  
03-04 Kristina Bunker

## HERB BROOKS AWARD

16-17 Emily Brown  
14-15 Makayla Tilton

## SENIOR CLASSIC PARTICIPANTS

21-22 Maddie Andrlé  
Kaitlyn Ronn  
20-21 Brielle Fussy  
19-20 Brityn Fussy  
Kayla Stumo  
18-19 Lauren Driste

Ramsey Parent  
17-18 Abby Jones  
Rachel Lentner  
Jaela O'Brien  
Paige Ondov  
Gabby Rosenthal

16-17 Paige Beebe  
Emily Brown  
Morgan Cin  
Courtney Moser  
Kenzie Wylie  
Miranda Zepeda

14-15 Alisa Wolens  
13-14 Kiersten Falck  
Katie Swanstrom  
Samantha  
Swanstrom

12-13 Alex Barber-  
Verdick

11-12 Erin Harper  
Tara Hoverstad  
Brittany Palmer  
Brittney Thunstrom  
10-11 Stephanie Schaber

08-09 Judy Daleiden  
Lauren Zrust

07-08 Brittany Beaudette  
Bridget Braastad

06-07 Ashley Nixon  
05-06 Madeline Stoy

04-05 Chelsie Breuhl  
Kaitlin Howard  
Sammy Nixon

03-04 Kristina Bunker  
Jenna Daleiden  
Stefanie Ubl

01-02 Tiffany Hagge  
Krista Johnson

98-99 Katie Beauduy  
Lindsey Kuehn

## HOBEY BAKER CHARACTER AWARD

21-22 Kaitlyn Ronn  
20-21 Brielle Fussy  
19-20 Kayla Stumo  
18-19 Lauren Driste  
17-18 Gabby Rosenthal  
16-17 Miranda Zepeda  
15-16 Kate Wehr  
14-15 Makayla Tilton  
13-14 Breanna Mahoney  
12-13 Alex Barber-

Verdick  
11-12 Brittany Palmer  
10-11 Jordan Johnson  
09-10 Breanna Bryand  
08-09 Abby Sinn  
07-08 Kelley Corkins  
06-07 Jessica Pafko  
05-06 Madeline Stoy  
04-05 Sammy Nixon

## MAKE A DIFFERENCE PLAYER OF THE YEAR

21-22 None Selected  
20-21 None Selected  
19-20 Kayla Stumo  
18-19 Dani Brunette  
Kayla Stumo  
17-18 Brityn Fussy  
16-17 Kenzie Wylie

## MS. HOCKEY FINALIST

16-17 Emily Brown  
01-02 Tiffany Hagge

## MS. HOCKEY SEMIFINALIST

16-17 Paige Beebe  
13-14 Kiersten Falck  
08-09 Lauren Zrust  
04-05 Sammy Nixon  
03-04 Kristina Bunker

## LET'S PLAY HOCKEY GOALIE OF THE YEAR

06-07 Ashley Nixon  
00-01 Jody Horak  
98-99 Katie Beauduy

## LET'S PLAY HOCKEY GOALIE FINALIST

04-05 Kim Hanlon

## LET'S PLAY HOCKEY GOALIE TOP 10 FINALIST

17-18 Jaela O'Brien  
11-12 Tara Hoverstad

# Thank You To Our Sponsors

22



23

Greater Midwest Financial Group

Crunch Fitness

Safety & Respect Driving School

Arko/All Auto Glass

Blaine Event Venue

MN Plumbing Pro

Brooks Landscaping

Milestone Orthodontist

Arthur's Jewelers

Twin Cities Orthopedics

Made 2 Move Chiropractic

OS HOCKEY

TN Automotive

Kottkes Bus Service

KH Promotions

Dr Brent Larsen

Realty One-Lisa Becker

O'Hara & Hunter

Therapy Associates, Inc

Chimera

Victory Links

Park Dental

Build and Balance Chiropractic

North Country Tire

Midwest Sports

Support Unlimited

Funny Looking Horse

Village Orthodontics

Jet's Pizza

Bradenburger

Broadway Pizza

Lifestyle Landscapes

Park Auto Body

Craftsman Construction

Health Evo

TJB Homes

House 2 Home

Dave's Sports

Center for Sports and the Mind

Red Savoy's

Paul's Barber Shop

Street Smart Driving School

Route 65

Your Exchange Check Cashing

Berins Mortgage Broker

Patriot Insurance

MN Equipment

Complete Performance

Renters Warehouse

Roxie's Bar

Pioneer Cycle

Big Dipper

Sophie's Squad

Fogerty Arena

David Banks

# Notes / Autographs

STAEDTLER triplus fineliner

DRY-SAFE

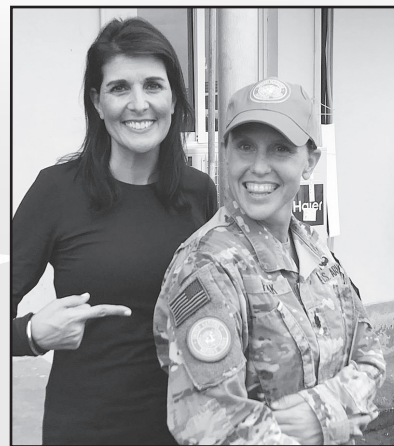
# Former Bengals' Serving in U.S. Military



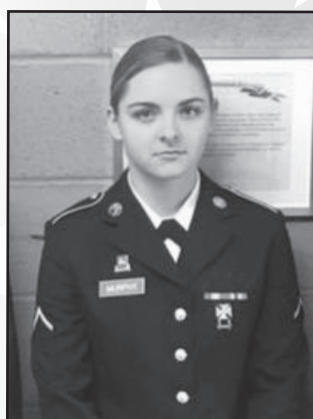
**ABBY HOUGHTLING**  
United States Air Force  
2nd Lieutenant



**CLAIRE HALLAWAY**  
United States Air Force  
A1C Airman 1st class



**KELLY PAJAK**  
United States Army  
Lieutenant Colonel



**ABBY MURPHY**  
United States Army  
Private First Class



**KATIE OLSRUD**  
Army National Guard  
Sergeant E-5



**KIM OSETH**  
United States Navy  
E-2 CTRSA  
Retired



**STEFANIE UBL**  
United States Army  
Captain



**MADELINE STOY**  
United States Navy  
First Class Petty Officer (E-6)



**CHRISTA HUBERT (GIRTZ)**  
Air National Guard  
Major



**KAYLA BLESI**  
United States Navy  
E-2

*“This nation will remain the land of the free only so long as it is the home of the brave.”* - Elmer Davis

# Former Bengals' in College Hockey



**RAMSEY PARENT**  
Ohio State University



**MADDIE ANDRLE**  
U of W Stevens Point



**KAITLYN RONN**  
U of Wisconsin River Falls

|                                                                     |                                                                          |
|---------------------------------------------------------------------|--------------------------------------------------------------------------|
| Tara Joosten . . . . . 1994 . . . . . Gustavus Adolphus College     | Ashley Tilton . . . . . 2009 . . . . . College of St. Catherine          |
| Lindsay Bertie . . . . . 1996 . . . . . U of New Hampshire          | Lauren Zrust . . . . . 2009 . . . . . Minnesota State University         |
| Erica Johnson . . . . . 1996 . . . . . Augsburg College             | Dani Scholzen . . . . . 2010 . . . . . Minnesota State University        |
| Emily Miller . . . . . 1996 . . . . . Augsburg College              | Megan Steinmetz . . . . . 2010 . . . . . St. Norbert                     |
| Lindsey Jerke . . . . . 1996 . . . . . St. Cloud State University   | Erin Harper . . . . . 2012 . . . . . Bethel College                      |
| Jodi Stepaniak . . . . . 1996 . . . . . U of St. Thomas             | Tara Hoverstad . . . . . 2012 . . . . . Stanford University              |
| Laura Tryba . . . . . 1997 . . . . . University of Minnesota        | Gustavus Adolphus College                                                |
| Bethany Howard . . . . . 1997 . . . . . St. Benedicts College       | Brittney Thunstrom . . . . . 2012 . . . . . Providence College           |
| Kim Conradi . . . . . 1997 . . . . . Bethel College                 | Alexandra Barber-Verdick . . . . . 2013 . . . . . Hamline University     |
| Katie Dierkhising . . . . . 1998 . . . . . St. Benedicts College    | Kiersten Falck . . . . . 2014 . . . . . Princeton University             |
| Katie Beauduy . . . . . 1999 . . . . . Minnesota State University   | Breanna Mahoney . . . . . 2014 . . . . . University of St. Thomas        |
| Jody Horak . . . . . 2001 . . . . . University of Minnesota         | Amy Schlagel . . . . . 2014 . . . . . University of New Hampshire        |
| Christa Hubert . . . . . 2001 . . . . . U of Wisconsin Eau Claire   | Katie Swanstrom . . . . . 2014 . . . . . Brown University                |
| Laura Cecko . . . . . 2001 . . . . . U of North Dakota              | Samantha Swanstrom . . . . . 2014 . . . . . Brown University             |
| Tiffany Hagge . . . . . 2002 . . . . . Dartmouth College            | Sam Auman . . . . . 2017 . . . . . University of St. Thomas              |
| Krista Johnson . . . . . 2002 . . . . . University of Minnesota     | Courtney Moser . . . . . 2017 . . . . . St. Mary's                       |
| Ashley Dreis . . . . . 2002 . . . . . U of Wisconsin Eau Claire     | Paige Beebe . . . . . 2017 . . . . . Bemidji State University            |
| Andrea Schippers . . . . . 2003 . . . . . Iowa State University     | Emily Brown . . . . . 2017 . . . . . University of Minnesota             |
| Christine Williams . . . . . 2003 . . . . . Iowa State University   | Kenzie Wylie . . . . . 2017 . . . . . St. Cloud State University         |
| Kristina Bunker . . . . . 2004 . . . . . Minnesota State University | <b>Gabby Rosenthal . . . . . 2018 . . . . . Ohio State University</b>    |
| Stefanie Ubl . . . . . 2004 . . . . . Gustavus Adolphus College     | Jaela O'Brien . . . . . 2018 . . . . . Hamline University                |
| Sammy Nixon . . . . . 2005 . . . . . St. Cloud State University     | <b>Ramsey Parent . . . . . 2019 . . . . . Ohio State University</b>      |
| Kim Hanlon . . . . . 2005 . . . . . University of Minnesota         | <b>Brityn Fussy . . . . . 2020 . . . . . Liberty University</b>          |
| Shannon Nelson . . . . . 2006 . . . . . U of Wisconsin Eau Claire   | <b>Kayla Stumo . . . . . 2020 . . . . . U of Wisconsin Stevens Point</b> |
| Ashley Nixon . . . . . 2007 . . . . . St. Cloud State University    | <b>Brielle Fussy . . . . . 2021 . . . . . Liberty University</b>         |
| Bridget Braastad . . . . . 2008 . . . . . College of St. Catherine  | <b>Maddie Andrle . . . . . 2022 . . . . . U of W Stevens Point</b>       |
| Judy Daleiden . . . . . 2009 . . . . . U of Wisconsin River Falls   | <b>Kaitlyn Ronn . . . . . 2022 . . . . . U of Wisconsin River Falls</b>  |



**GABBY ROSENTHAL**  
Ohio State University



**BRITYN FUSSY**  
Liberty University



**KAYLA STUMO**  
U of Wisconsin Stevens Point



**BRIELLE FUSSY**  
Liberty University

**ROXIE'S**  
**BAR & GRILL**  
 UPTOWN ALMENA, WI

119 Soo Ave E Almena, WI 54804  
 #715-357-6369



**Milestone  
Orthodontics**

- Anoka
- Blaine
- Elk River
- Andover
- Coon Rapids
- St. Francis

(763) 427 2740 • [milestoneortho.net](http://milestoneortho.net)



**FUNNYLOOKINGHORSE.COM**



**ME MINNESOTA  
EQUIPMENT**

**TORO** **ARIENS** **JOHN DEER**

**GO BENGALS!**

**NEW • USED  
SERVICE • PARTS • SALES**

[MinnesotaEquipment.com](http://MinnesotaEquipment.com)


|          |              |
|----------|--------------|
| Ham Lake | 763-755-2347 |
| Isanti   | 763-444-8873 |
| Rogers   | 763-428-4107 |
| Savage   | 952-890-9242 |

Handmade  
Premium  
Ice cream



Family  
Owned

Follow us  
@BigdippercreameryBlaine

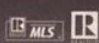


**ONE** REALTYONEGROUP  
CHOICE

**Lisa Becker**  
REALTOR®

763.232.5932  
o 763.400.3680  
lisab65@hotmail.com

Realty One Group Choice  
1893 Station Parkway NW  
Andover, MN 55304



**BE MY GUEST**

TRY US OUT WITH A 3-DAY PASS!



CRUNCHMAPLEGROVE.COM • CRUNCHBLAINE.COM

f /MAPLEGROVE    i @MAPLEGROVE  
t @CRUNCHGYM    i @CRUNCHGYM

Valid at specified locations only for 1st time guests, 18+ with valid local ID. Must sign guest registry, and take guided club tour upon activation. © 2022 Crunch IP Holdings, LLC.

**DR. BRANT A. LARSEN**

Kinesiology • Chiropractic • Sports Injuries

[www.drlarsen.com](http://www.drlarsen.com)

651-982-1804  
drbrant@drlarsen.com

146 North Lake Street # 220  
Forest Lake, MN 55025



**SUPPORT UNLIMITED INC**  
web design • digital marketing



**WE HELP GROW YOUR BUSINESS**

**612.333.1994**

[www.supportunlimited.net](http://www.supportunlimited.net)



**COMPLETE PERFORMANCE SPORTS PERFORMANCE TRAINING**

**FIRST MONTH FREE!**

with Discount Code:  
Bengal\_Hockey



[www.completeperformancemn.com](http://www.completeperformancemn.com)

# MAW

MIDWEST ALL-STAR WRESTLING



**Brandenburger**  
**Law Firm**

**Mark J. Brandenburg**  
**Relentless, strategic counsel**

**Workers' Compensation • Personal Injury • Civil Litigation**

[www.brandenburgerlaw.com](http://www.brandenburgerlaw.com) • [mark@brandenburgerlaw.com](mailto:mark@brandenburgerlaw.com)

**651-271-3672**



# Kottkes' Bus Service

## Transporting winners since 1947

763-755-3100 – [kottkesbus.com](http://kottkesbus.com)



### MAX PERFORMANCE

Your brain and body are in constant communication. The nervous system is responsible for every function and movement your body performs. Stress interferes with this system, causing dysfunction, leading to a variety of symptoms. We address the cause of the stress to allow your brain and body to communicate at an optimal level. Meaning your body can function at its best.

MAKE YOUR MOVE.  
CALL US + MENTION THIS AD.  
763.400.3872



Adjustments create a lot of positive changes in your body, but it doesn't stop there. How you train, how you sit, and how you move day to day determines how your body responds. Over time, your body creates compensation patterns. We provide individualized exercises and stretches to re-educate improper movement patterns, so you have the knowledge to move how you're made to.

### MOVE WELL



### PREVENT INJURY

Structural misalignments are one of the leading causes of injuries to the athlete. Our passion is to educate athletes on how to listen to their body and naturally treat and prevent injuries through chiropractic care. This includes runner's knee, shin splints, plantar fasciitis, ankle sprains, stingers, shoulder impingement, tennis elbow, neck pain, wrist pain, back pain, stress fractures, muscles cramps and repetitive muscle strains.

13654 VAN BUREN ST NE (STE. 200)  
HAM LAKE, MN 55304

7820  
University Ave NE



Fridley, MN  
763-444-1347



PRESENT THIS AD TO YOUR SERVER AND RECEIVE  
**1/2 OFF AN ENTRÉE**  
WHEN AN ENTRÉE OF EQUAL OR GREATER VALUE  
AND 2 BEVERAGES ARE PURCHASED.

Coupon valid for one use only. \*Cannot be used in conjunction with other coupons or specials.

18407  
Hwy 65 NE



East Bethel, MN  
763-413-3550



# VETERANS MEMORIAL PARK OF BLAINE



## MONUMENT SITES

1. Memorial Boulder

2. Civil War Memorial

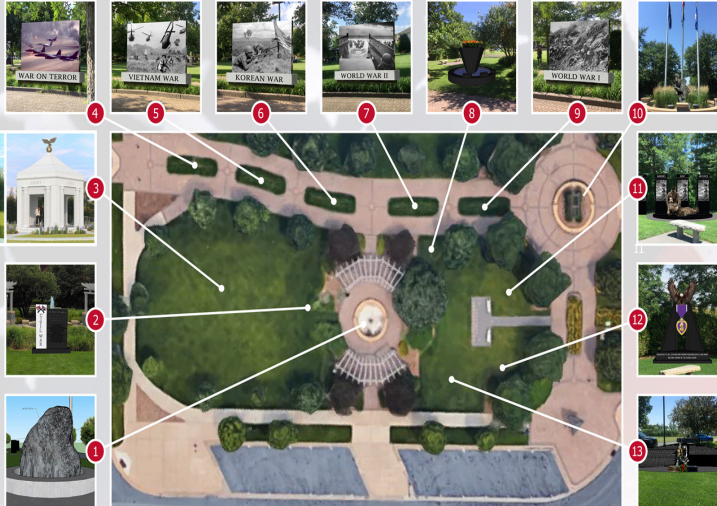
3. Armed Services Monument and Branch Memorials

4. War on Terror Memorial

5. Vietnam War Memorial

6. Korean War Memorial

7. WWII Memorial



8. Women's Memorial

9. WWI Memorial

10. Soldier Statue

11. Fallen Soldier Memorial

12. Purple Heart Memorial

13. POW / MIA Memorial



**Good Luck  
Blaine Bengals!**

Are you saving enough for retirement?

Get Real Retirement Advice from Real Experts.

Call or email to request a complimentary review.



651-490-9790

Jim Ronn Email: [james.ronn@greater-midwest.com](mailto:james.ronn@greater-midwest.com)

Bobby Phillips Email: [robert.phillips@greater-midwest.com](mailto:robert.phillips@greater-midwest.com)

\*Age Wave/Merrill Lynch, "Finances in Retirement: New Challenges, New Solutions," 2017. Securities offered through Kestra Investment Services, LLC (Kestra IS), member FINRA/SIPC. Investment advisory services offered through Kestra Advisory Services, LLC (Kestra AS), an affiliate of Kestra IS. Greater Midwest Financial Group, LLC is not affiliated with Kestra IS or Kestra AS.

# 2022 BENGAL



Row 1 (L to R): Morgan Zenk, Grace Chapman, Paige Nowicki, Macy Janssen

Row 2 (L to R): Coach Steve Guider, Coach Calla Athman, Miyah Gunter, Taylor Olson, Ellie Thompson,

Row 3 (L to R): Isabella Slawson, Edin Erie, Jessica McClaren, Jayla Ivers

Not Pictured: Emily

# HOCKEY 2023



Hailey Hansen, Kendal Dean, Audrey Schwark, Evey Konkler, Mandy Larson

Bella Brady, Kayla Shaffer, Cierra Ledeen, Gracyn Knowles, McKenna Jacobsen, Coach Kaitlin Howard

on, Leah Osendorf, Bella Hunter, Megan Wallin, Coach Tom Maeckelbergh

Vogel, Megan Miller



# Good Luck!

**BLAINE GIRLS HOCKEY 2022-2023**



## AMANDA LARSON

Mandy, we are so proud of you,  
have a great 2022-2023 season!

*Mama, Ta-ta, Lilo and Chris*

## ISABELLA BRADY

Good Luck Bells!

We are cheering for you from  
Norway, Texas and Minnesota!

Love you bunches!

*Your Aunties- Cari, Krissy and Amanda*

## TAYLOR OLSON

We hope you have the most fun  
and successful year yet Tay!  
Your hard work and dedication  
have definitely paid off.

We are so proud of you!

*Love you always! Your Family*

## ISABELLA BRADY

We are so proud of you,  
your effort and  
your determination.

Have fun and enjoy every minute.

*Love you! Mom, Dad and Justin*

## MEGAN WALLIN

Megan –

We're super proud of you  
and love watching you play.

Keep working hard!

*Love Mom, Dad, and Ryan*

## MORGAN ZENK

#35 We are so proud  
of you and all your hard work.

Good luck Mo and  
all our Bengals!

*Love your biggest fans, Zenk Family*

## KENDAL DEAN

Good Luck Kendal Ann!  
We are so proud of the young  
woman you have become.

LOVE YOU TO THE  
MOON AND BACK,

*Papa & Grandma Dean*

## MACY JANSSEN

Macy –

Best of luck with your Senior season!

We love you and are so proud!

*Love – Grama, Grampa,  
Antie, Uncle and the kids*



# Good Luck!

**BLAINE GIRLS HOCKEY 2022-2023**



## MORGAN ZENK

Good luck Morgan!

Have a great season of  
hockey with your teammates!

*Love Always, Grandpa and Grandma Baker*

## MCKENNA JACOBSEN

McKenna,

Work hard and have fun!  
We love watching you play!

*Love, Mom, Dad and Teddy*

## CIERRA LEDEEN

We are so proud of you  
and all your hard work  
and great attitude on  
and off the ice!

Good luck this season!!  
Play hard and have fun!

*Love Mom, Westen, Jewel & Hunter*

## MCKENNA JACOBSEN

Your grandpa is  
very proud of you!

*Love, Grandpa Jacobsen*

## JAYLA IVERSON

Jayla,

We're so proud of how you've  
persevered through everything  
that's happened this year!

You're powerful,  
clever and fearless!

*Grandma*

## HAILEY HANSEN

Enjoy your final  
year in a Bengal uniform.  
Make each moment count.

*Love, Mom and Dad*

## EVEY KONKLER

Good luck this season Evey!  
We love watching you play!

*Dad, Mom, Wyatt & Owen*

## JAYLA IVERSON

Jayla,

Like I tell you before every game,  
"Go get it!"

We believe in you!

*I love you, Grandpa Mikers*

# Bengal Class of 2023

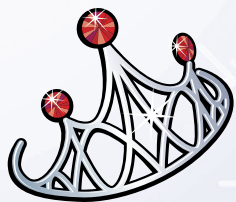
22



23



(L to R): Evey Konkler, Macy Janssen, Audrey Schwark, Hailey Hansen, Kendal Dean, Paige Nowicki



FORGET THE

**GLASS SLIPPERS**

THESE PRINCESSES WEAR

**HOCKEY SKATES**

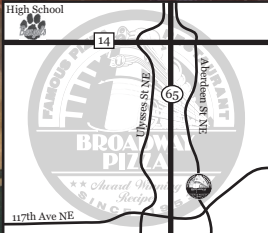


# ORDER ONLINE

BROADWAYPIZZA.COM

(763) 755-5080

DOORDASH . GRUBHUB  
UBER EATS



DINE-IN  
DELIVERY  
TAKE-OUT  
CURBSIDE

## \$5 off

an Order of  
\$30 or More

Online Code:  
530

Expires 6/30/2023. One discount per coupon. Valid only at the Blaine location. Not valid with any other offers or discounts. Must present coupon to be valid. Online offer code valid on Broadway Pizza official website only.

Blaine High School Girls Hockey Program



MENTION BLAINE HOCKEY FOR 10% OFF (ONLINE COUPON: HOCKEY10) WWW.ARTHURSJEWELERS.COM

**ARTHUR'S**  
JEWELERS  
The King of Diamonds



Check Cashing - Corporate Check Cashing - Direct Deposit  
**YOUR EXCHANGE**  
We Buy Gold - We Buy Gift Cards - Card Cashing - Loans

#StudentCheckCashing #meetyexthepaycheck

Locations



Blaine  
Brooklyn Park  
Columbia Heights  
Coon Rapids  
Fridley

[www.your-exchange.com](http://www.your-exchange.com)



# SNOW REMOVAL

RESIDENTIAL & COMMERCIAL  
SNOW PLOWING

- Lots • Driveways • Walkways •
- Sidewalks • Salting •



**BROOKS**  
LANDSCAPING

**763-283-6171**

**BROOKSLANDSCAPINGMN@GMAIL.COM**

**Proudly  
Supporting  
Blaine Athletics**

Mention this ad and receive

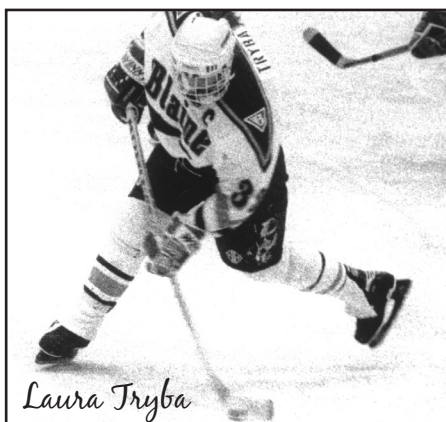
**\$5 off**  
**a 30\$ order**



# Blaine Bengals Alumni

|                                |              |                               |       |                                |       |                               |          |                                    |       |
|--------------------------------|--------------|-------------------------------|-------|--------------------------------|-------|-------------------------------|----------|------------------------------------|-------|
| Aamodt, Kyla . . . . .         | 13-14, 16-17 | Daleiden, Jillian . . . . .   | 03-07 | Jerke, Lindsay . . . . .       | 94-96 | Nelson, Alyssa . . . . .      | 98-00    | Schweiger, Emma . . . . .          | 14-16 |
| Adams, Shannon . . . . .       | 95-99        | Daleiden, Judy . . . . .      | 04-09 | Johnson, Erica . . . . .       | 93-96 | Nelson, Rachel . . . . .      | 96-99    | Simmer, Kelli . . . . .            | 07-09 |
| Al-arahawi, Fatin . . . . .    | 08-09        | Danielson, Natalie . . . . .  | 18-22 | Johnson, Erin . . . . .        | 96-98 | Nelson, Shannon . . . . .     | 01-06    | Shaffer, Kayla . . . . .           | 21-22 |
| Anderson, Jessica . . . . .    | 94-95        | Daninger, Kayla . . . . .     | 17-20 | Johnson, Jenna . . . . .       | 05-08 | Nixon, Ashley . . . . .       | 04-07    | Singh, Camryn . . . . .            | 19-22 |
| Anderson, Mackenzie . . . . .  | 16-18        | Dean, Kendal . . . . .        | 19-22 | Johnson, Jessica . . . . .     | 95-99 | Nixon, Sammy . . . . .        | 99-05    | Sinn, Abby . . . . .               | 05-09 |
| Anderson, Maya . . . . .       | 19-22        | Deline, Jackie . . . . .      | 07-10 | Johnson, Jordan . . . . .      | 06-11 | Norman, Desiree . . . . .     | 04-05    | Sinner, Kenzie . . . . .           | 17-20 |
| Anderson, Rosanna . . . . .    | 97-00        | Dierkhising, Katie . . . . .  | 94-98 | Johnson, Katie . . . . .       | 94-95 | Nowicki, Brooke . . . . .     | 18-22    | Smith, Jennifer . . . . .          | 13-15 |
| Anderson, Sarah . . . . .      | 01-05        | Donahue, Josie . . . . .      | 94-96 | Johnson, Kelly . . . . .       | 94-95 | Nowicki, Paige . . . . .      | 19-22    | Speller, Jessica . . . . .         | 93-95 |
| Andrie, Maddie . . . . .       | 18-22        | Dreis, Ashley . . . . .       | 99-02 | Johnson, Krista . . . . .      | 94-98 | O'Brien, Jaela . . . . .      | 15-18    | Sperling, Amanda . . . . .         | 03-04 |
| Andrie, Sydney . . . . .       | 21-22        | Duffe, Lauren . . . . .       | 16-19 | Johnson, Krista . . . . .      | 00-02 | Ohmann, Andrea . . . . .      | 08-11    | Stauffer, Karen . . . . .          | 93-96 |
| Argeros, Emily . . . . .       | 16-18        | Duffy, Cayla . . . . .        | 03-06 | Johnson, Lexi . . . . .        | 18-20 | Olsrud, Katie . . . . .       | 10-12    | Steinmetz, Annie . . . . .         | 14-15 |
| Auman, Sam . . . . .           | 13-17        | Enlow, Tess . . . . .         | 18-22 | Johnson, Margaret . . . . .    | 12-13 | Ondov, Paije . . . . .        | 15-18    | Steinmetz, Megan . . . . .         | 05-10 |
| Aune, Alissa . . . . .         | 96-99        | Erie, Edin . . . . .          | 21-22 | Jones, Abby . . . . .          | 15-18 | O'Neil, Erin . . . . .        | 97-01    | Stepaniak, Jodi . . . . .          | 93-96 |
| Bailey, Sidney . . . . .       | 13, 15-16    | Erikson, Nicole . . . . .     | 02-06 | Joosten, Tara . . . . .        | 93-94 | Ocker, Kristen . . . . .      | 94-97    | Stewart, Paige . . . . .           | 09-13 |
| Bakken, Annie . . . . .        | 04-06        | Erickson, Sarah . . . . .     | 98-99 | Kendall, Sophie . . . . .      | 13-15 | O'Connor, Amber . . . . .     | 03-06    | Stewart-Calvert, Jessica . . . . . | 96-99 |
| Balk, Ruth . . . . .           | 06-09        | Falck, Kiersten . . . . .     | 10-14 | Kennelly, Melia . . . . .      | 09-10 | Olson, Kelsey . . . . .       | 03-05    | Stoner, Maddison . . . . .         | 13-16 |
| Barber-Verdick, Alex . . . . . | 09-13        | Finnegan, Molly . . . . .     | 94-95 | Kerr, Brittny . . . . .        | 09-10 | Olson, Kendelle . . . . .     | 02-04    | Stoy, Madeline . . . . .           | 02-06 |
| Barkela, Allison . . . . .     | 11-12        | Fitzsimons, Laura . . . . .   | 14-17 | King, Nicole . . . . .         | 94-98 | Olson, Selena . . . . .       | 93-95    | Stumo, Kayla . . . . .             | 17-20 |
| Bauer, Brooklyn . . . . .      | 21-22        | Fowler, Sarah . . . . .       | 94-96 | King, Tara . . . . .           | 98-00 | Olson, Taylor . . . . .       | 21-22    | Sullivan, Erin . . . . .           | 17-19 |
| Bauer, Lisa . . . . .          | 94-96        | Frank, Cassie . . . . .       | 02-06 | Kleve, Megan . . . . .         | 09-12 | Oman, Caitlynn . . . . .      | 16-17    | Swanstrom, Katie . . . . .         | 10-14 |
| Bautch, Grace . . . . .        | 18-22        | Frank, Christie . . . . .     | 94-97 | Knowles, Gracyn . . . . .      | 21-22 | Osbeck, Abby . . . . .        | 09-10    | Swanstrom, Samantha . . . . .      | 10-14 |
| Beaudette, Brittany . . . . .  | 05-08        | Frank, Katie . . . . .        | 98-02 | Kohout, Melissa . . . . .      | 94-96 | Osbeck, Ashley . . . . .      | 12-16    | Tatro, Kayla . . . . .             | 06-09 |
| Beauduy, Katie . . . . .       | 95-99        | Fussy, Brielle . . . . .      | 17-21 | Konkler, Evey . . . . .        | 20-22 | Osborne, Kristy . . . . .     | 94-96    | Tatro, Kelsey . . . . .            | 09-10 |
| Beebe, Megan . . . . .         | 19-21        | Fussy, Brityn . . . . .       | 17-20 | Krause, Beth . . . . .         | 97-99 | Osendorf, Leah . . . . .      | 21-22    | Thoma, Jamie . . . . .             | 05-08 |
| Beebe, Paige . . . . .         | 13-17        | Fussy, Brooklyne . . . . .    | 05-08 | Krieger, McKenzie . . . . .    | 14-15 | Osendorf, Trista . . . . .    | 18-22    | Thomas, Alysa . . . . .            | 12-13 |
| Benson, Amy . . . . .          | 03-04        | Ganley, Sarah . . . . .       | 13-17 | Kuehn, Lindsey . . . . .       | 95-99 | Oseth, Kim . . . . .          | 95-97    | Thompson, Ellie . . . . .          | 21-22 |
| Berg, Gina . . . . .           | 11-13        | Gerhardt, Mary . . . . .      | 94-95 | Kukowski, Kendra . . . . .     | 14-18 | Otto, Jamie . . . . .         | 05-08    | Thomsen, Mojo . . . . .            | 17-19 |
| Berlin, Angie . . . . .        | 99-01        | Gillman, Shaina . . . . .     | 09-12 | Kulkay, Kristina . . . . .     | 94-96 | Pafko, Ashley . . . . .       | 11-13    | Thunstrom, Brittny . . . . .       | 08-12 |
| Berlin, Ashley . . . . .       | 05-06        | Gillund, Elizabeth . . . . .  | 08-10 | Lachinski, Hailey . . . . .    | 09-13 | Pafko, Jessica . . . . .      | 03-07    | Tilton, Ashley . . . . .           | 05-09 |
| Bernhardt, Jolina . . . . .    | 12-13        | Gionatti, Melissa . . . . .   | 94-96 | Landborg, Cassy . . . . .      | 07-10 | Pajak, Jaime . . . . .        | 93-95    | Tilton, Makayla . . . . .          | 11-15 |
| Bertie, Lindsay . . . . .      | 93-96        | Gleason, Erin . . . . .       | 00-02 | Landborg, Olivia . . . . .     | 09-10 | Pajak, Kelly . . . . .        | 94-96    | Tombers, Sydney . . . . .          | 09-10 |
| Bjugstad, Abbie . . . . .      | 05-07        | Gleason, Rhonda . . . . .     | 95-98 | Larson, Mandy . . . . .        | 21-22 | Palmer, Brittany . . . . .    | 08-12    | Treece, Alyssa . . . . .           | 16-18 |
| Blackman, Katie . . . . .      | 96-97        | Granroth, Laura . . . . .     | 93-96 | Laursen, Sandy . . . . .       | 01-03 | Parent, Peyton . . . . .      | 17-21    | Treece, Megan . . . . .            | 14-17 |
| Blesi, Kayla . . . . .         | 17-20        | Grazulis, Rachel . . . . .    | 06-08 | Laursen, Virginia . . . . .    | 97-00 | Parent, Ramsey . . . . .      | 14-19    | True, Alexi . . . . .              | 15-16 |
| Bochenski, Brooke . . . . .    | 96-97        | Griffith, Sara . . . . .      | 96-98 | Ledeene, Cierra . . . . .      | 21-22 | Parks, Amanda . . . . .       | 00-04    | Tryba, Laura . . . . .             | 93-97 |
| Borja, Hailey . . . . .        | 12-13        | Hagge, Tiffany . . . . .      | 97-02 | LeMire, Deanna . . . . .       | 14-18 | Parlin, Angie . . . . .       | 99-01    | Tuckner, Sam . . . . .             | 10-11 |
| Boyce, Riley . . . . .         | 10-13        | Hallaway, Claire . . . . .    | 13-16 | Lentner, Rachel . . . . .      | 14-18 | Paulson, Liz . . . . .        | 99-02    | Tyra, Kayla . . . . .              | 15-18 |
| Braastad, Bridget . . . . .    | 05-08        | Hanlon, Kim . . . . .         | 00-05 | Lentz, Amy . . . . .           | 94-95 | Peck, Breanna . . . . .       | 01-05    | Ubl, Stefanie . . . . .            | 98-04 |
| Brady, Isabella . . . . .      | 21-22        | Hansen, Hailey . . . . .      | 18-22 | Linderholm, Elaina . . . . .   | 99-00 | Pedersen, Kala . . . . .      | 04-05    | Van Asch, Jacklynn . . . . .       | 04-06 |
| Brandt, Amanda . . . . .       | 94-98        | Hanson, Alyssa . . . . .      | 08-09 | Lindsay, Tayah . . . . .       | 13-17 | Penner, Jenny . . . . .       | 94-98    | Van Berkom, Anna . . . . .         | 11-13 |
| Brazier, Colleen . . . . .     | 94-96        | Harper, Erin . . . . .        | 08-12 | Lindsay, Kate . . . . .        | 97-99 | Perez, Becca . . . . .        | 98-03    | Vandal, Sydni . . . . .            | 06-08 |
| Breuhl, Chelsie . . . . .      | 01-05        | Hart, Erica . . . . .         | 11-13 | Lippold, Sophie . . . . .      | 10-11 | Peterson, Danielle . . . . .  | 04-07    | Vandal, Taylor . . . . .           | 08-10 |
| Breuhl, Kristina . . . . .     | 00-04        | Hartman, Tracy . . . . .      | 95-98 | Maeckelbergh, Alex . . . . .   | 10-11 | Peterson, Jennifer . . . . .  | 04-05    | VanHorn, Danielle . . . . .        | 98-02 |
| Brockway, Jamie . . . . .      | 02-03        | Haugen, Danielle . . . . .    | 99-00 | Maeckelbergh, Anna . . . . .   | 18-19 | Peterson, Taylor . . . . .    | 11-13    | Vogel, Abby . . . . .              | 11-14 |
| Brovold, Katie . . . . .       | 02-07        | Hayes, Brooke . . . . .       | 94-96 | Mahoney, Breanna . . . . .     | 11-14 | Pierro, Madison . . . . .     | 08-09    | Vogel, Cassidy . . . . .           | 17-18 |
| Brown, Emily . . . . .         | 13-17        | Hendrickson, Annika . . . . . | 18-21 | Malvin, Katie . . . . .        | 02-06 | Postudensek, Ellen . . . . .  | 13-17    | Vogel, Emily . . . . .             | 21-22 |
| Brunet, Kristina . . . . .     | 93-94        | Hennum, Sarah . . . . .       | 98-02 | Manetas, Kate . . . . .        | 09-10 | Price, Kelsey . . . . .       | 09-12    | Vold, Marissa . . . . .            | 19-21 |
| Brunette, Dani . . . . .       | 18-20        | Herschberger, Sarah . . . . . | 01-04 | McCall, Jenny . . . . .        | 95-98 | Rabe, Brenna . . . . .        | 17-20    | Vranicar, Alyssa . . . . .         | 06-09 |
| Brunette, Izzy . . . . .       | 17-20        | Higley, Amanda . . . . .      | 98-99 | McClaren, Jessica . . . . .    | 21-22 | Ragner, Jessica . . . . .     | 02-03    | Wallin, Megan . . . . .            | 21-22 |
| Bryand, Breanna . . . . .      | 06-10        | Higley, Ginny . . . . .       | 98-02 | McKenzie, Annie . . . . .      | 13-15 | Rainville, Melissa . . . . .  | 95-96    | Ward, Rachael . . . . .            | 01-04 |
| Bunker, Jennie . . . . .       | 96-99        | Hillesheim, Megan . . . . .   | 03-05 | McKenzie, Megan . . . . .      | 14-18 | Rambhajan, Sonia . . . . .    | 15-19    | Warmuth, Haley . . . . .           | 09-13 |
| Bunker, Kristina . . . . .     | 98-04        | Hillman, Alli . . . . .       | 18-20 | McMahon, Jamie . . . . .       | 98-99 | Rangel, Cynthia . . . . .     | 97-98    | Wehr, Kate . . . . .               | 12-16 |
| Buzick, Jayden . . . . .       | 11-13        | Hjelleset, Silje . . . . .    | 05-06 | Mecham, Ashlie . . . . .       | 2002  | Reed, Jennifer . . . . .      | 97-01    | Weinandt, Enya . . . . .           | 17-20 |
| Buzick, McKenna . . . . .      | 09-12        | Holth, Angela . . . . .       | 07-08 | Melich, Andrea . . . . .       | 94-96 | Rehrauer, Hannah . . . . .    | 18-20,22 | Weinmann, Tracy . . . . .          | 99-01 |
| Bye, Niki . . . . .            | 97-98        | Horak, Jody . . . . .         | 99-01 | Meuleners, Mackenzie . . . . . | 07-11 | Reimann, Morgan . . . . .     | 15-18    | Welsch, Brianna . . . . .          | 09-12 |
| Callahan, Tarrah . . . . .     | 09-14        | Houghtling, Abby . . . . .    | 12-16 | Meyer, Jena . . . . .          | 05-09 | Repik, Kelsey . . . . .       | 08-12    | Wieden, Haylie . . . . .           | 08-10 |
| Carlson, Natasha . . . . .     | 09-10        | Hoverstad, Tara . . . . .     | 08-12 | Meyer, Missy . . . . .         | 94-97 | Ringel, Sara . . . . .        | 03-07    | Wieting, Danita . . . . .          | 00-01 |
| Cecko, Laura . . . . .         | 97-00        | Howard, Bethany . . . . .     | 94-97 | Mezzano, Ally . . . . .        | 10-14 | Rock, Rachael . . . . .       | 00-02    | Wille, Kate . . . . .              | 21-22 |
| Chalbi, Karen . . . . .        | 94-95        | Howard, Kaitlin . . . . .     | 03-04 | Miller, Emily . . . . .        | 93-96 | Ronn, Kaitlyn . . . . .       | 18-22    | Williams, Christine . . . . .      | 00-03 |
| Chapman, Grace . . . . .       | 21-22        | Hubert, Christa . . . . .     | 97-01 | Miller, Miranda . . . . .      | 13-16 | Rosenthal, Gabby . . . . .    | 14-18    | Wilson, Alyssa . . . . .           | 00-04 |
| Chapman, Jessica . . . . .     | 05-08        | Hubert, Micki . . . . .       | 95-99 | Miller, Shanna . . . . .       | 98-02 | Ross, Chrissy . . . . .       | 95-96    | Witte, Sarah . . . . .             | 00-01 |
| Chiodo, Bahia . . . . .        | 93-94        | Hughes, Grace . . . . .       | 19-20 | Molitor, Molly . . . . .       | 03-06 | Rosvold, Gina . . . . .       | 14-17    | Wolens, Alisa . . . . .            | 10-15 |
| Christenson, Izzy . . . . .    | 19-20        | Hughes, Hailey . . . . .      | 21-22 | Mortenson, Logan . . . . .     | 11-13 | Roy, Taydem . . . . .         | 93-94    | Wright, Ashley . . . . .           | 06-10 |
| Ciarletta, Danielle . . . . .  | 01-02        | Hultman, Lindsey . . . . .    | 98-01 | Moser, Christina . . . . .     | 07-09 | Sabby, Sophia . . . . .       | 12-15    | Wylie, Kenzie . . . . .            | 13-17 |
| Cin, Morgan . . . . .          | 13-17        | Husman, Kathy . . . . .       | 94-96 | Moser, Courtney . . . . .      | 13-17 | Sandberg, Shelby . . . . .    | 19-22    | Zahratka, Haley . . . . .          | 16-17 |
| Clair, Jenna . . . . .         | 18-20        | Huttunen, Nicole . . . . .    | 10-14 | Mulligan, Meagan . . . . .     | 95-96 | Schaber, Stephanie . . . . .  | 06-11    | Zebro, Afton . . . . .             | 09-13 |
| Conradi, Kim . . . . .         | 94-97        | Jacques, Alexis . . . . .     | 13-14 | Murphy, Abby . . . . .         | 14-17 | Schippers, Andrea . . . . .   | 00-03    | Zenk, Morgan . . . . .             | 19-21 |
| Corkins, Kelley . . . . .      | 04-08        | Janssen, Macy . . . . .       | 19-22 | Murphy, Kyla . . . . .         | 96-99 | Schlagel, Amy . . . . .       | 12-14    | Zepeda, Miranda . . . . .          | 14-17 |
| Craig, Bethany . . . . .       | 04-07        | Jaremko, Melissa . . . . .    | 94-95 | Murray, Megan . . . . .        | 13-15 | Schneider, Adrianna . . . . . | 07-09    | Ziegler, Kirsten . . . . .         | 13-17 |
| Daleiden, Jackie . . . . .     | 02-04        | Jensrud, Andrea . . . . .     | 98-01 | Nason, Kelly . . . . .         | 94-97 | Scholzen, Danielle . . . . .  | 05-10    | Zrust, Lauren . . . . .            | 04-02 |
| Daleiden, Jenna . . . . .      | 00-04        | Jensrud, Courtney . . . . .   | 10-13 | Nason, Sarah . . . . .         | 94-95 | Schwark, Audrey . . . . .     | 19-22    |                                    |       |

# Blaine Single Season Scoring Leaders



## TOTAL POINTS

### "THE SEASON 50-POINT CLUB"

|    |                 |       |
|----|-----------------|-------|
| 87 | Laura Tryba     | 94-95 |
| 80 | Kristina Bunker | 02-03 |
| 77 | Kristina Bunker | 01-02 |
| 74 | Kristina Bunker | 03-04 |
| 72 | Laura Tryba     | 95-96 |
| 71 | Laura Tryba     | 96-97 |
| 67 | Kiersten Falck  | 12-13 |
| 66 | Sammy Nixon     | 03-04 |
| 64 | Sammy Nixon     | 04-05 |
| 62 | Becca Perez     | 01-02 |
| 62 | Lindsay Bertie  | 94-95 |
| 61 | Gabby Rosenthal | 16-17 |
| 61 | Tiffany Hagge   | 00-01 |
| 61 | Erica Johnson   | 94-95 |
| 60 | Kristina Bunker | 00-01 |
| 60 | Erica Johnson   | 95-96 |
| 58 | Sammy Nixon     | 02-03 |
| 57 | Paige Beebe     | 16-17 |
| 55 | Gabby Rosenthal | 17-18 |
| 55 | Ramsey Parent   | 16-17 |
| 54 | Paige Beebe     | 15-16 |
| 53 | Lauren Zrust    | 06-07 |
| 53 | Lindsay Bertie  | 95-96 |
| 52 | Ramsey Parent   | 17-18 |
| 51 | Kiersten Falck  | 13-14 |
| 51 | Lauren Zrust    | 08-09 |

## GOALS BY A DEFENSEMAN

|    |                |       |
|----|----------------|-------|
| 18 | Tiffany Hagge  | 99-00 |
| 16 | Emily Brown    | 16-17 |
| 15 | Krista Johnson | 01-02 |
| 14 | Emily Miller   | 95-96 |
| 14 | Emily Miller   | 94-95 |

## GOALS

|    |                 |       |
|----|-----------------|-------|
| 51 | Laura Tryba     | 96-97 |
| 48 | Laura Tryba     | 94-95 |
| 45 | Kristina Bunker | 02-03 |
| 45 | Laura Tryba     | 95-96 |
| 44 | Sammy Nixon     | 04-05 |
| 43 | Kristina Bunker | 03-04 |
| 36 | Kristina Bunker | 01-02 |
| 35 | Tiffany Hagge   | 00-01 |
| 34 | Gabby Rosenthal | 17-18 |

## GOALS (CONT.)

|    |                 |       |
|----|-----------------|-------|
| 32 | Amy Schlagel    | 13-14 |
| 32 | Lauren Zrust    | 08-09 |
| 32 | Sammy Nixon     | 03-04 |
| 32 | Sammy Nixon     | 02-03 |
| 31 | Lauren Zrust    | 06-07 |
| 30 | Lauren Zrust    | 07-08 |
| 30 | Erica Johnson   | 94-95 |
| 29 | Ramsey Parent   | 18-19 |
| 29 | Gabby Rosenthal | 16-17 |
| 29 | Kristina Bunker | 00-01 |
| 29 | Erica Johnson   | 95-96 |
| 28 | Paige Beebe     | 15-16 |
| 28 | Lindsay Bertie  | 94-95 |

## ASSISTS

|    |                    |       |
|----|--------------------|-------|
| 44 | Kiersten Falck     | 12-13 |
| 41 | Kristina Bunker    | 01-02 |
| 39 | Laura Tryba        | 94-95 |
| 38 | Becca Perez        | 01-02 |
| 35 | Paige Beebe        | 16-17 |
| 35 | Kristina Bunker    | 02-03 |
| 34 | Sammy Nixon        | 03-04 |
| 34 | Lindsay Bertie     | 94-95 |
| 32 | Gabby Rosenthal    | 16-17 |
| 32 | Kiersten Falck     | 11-12 |
| 32 | Lindsay Bertie     | 95-96 |
| 31 | Ramsey Parent      | 17-18 |
| 31 | Kristina Bunker    | 03-04 |
| 31 | Kristina Bunker    | 00-01 |
| 31 | Erica Johnson      | 95-96 |
| 31 | Erica Johnson      | 94-95 |
| 30 | Kiersten Falck     | 13-14 |
| 28 | Samantha Swanstrom | 13-14 |
| 27 | Laura Tryba        | 95-96 |
| 26 | Paige Beebe        | 15-16 |
| 26 | Sammy Nixon        | 02-03 |
| 26 | Tiffany Hagge      | 00-01 |

## POINTS BY A DEFENSEMAN

|    |                |       |
|----|----------------|-------|
| 45 | Emily Brown    | 16-17 |
| 40 | Krista Johnson | 01-02 |
| 39 | Tiffany Hagge  | 99-00 |
| 32 | Emily Miller   | 94-95 |
| 30 | Kenzie Wylie   | 16-17 |
| 30 | Emily Brown    | 15-16 |
| 30 | Emily Miller   | 95-96 |



## POINTS (CONT.)

|    |                |       |
|----|----------------|-------|
| 27 | Krista Johnson | 00-01 |
| 25 | Kaitlyn Ronn   | 21-22 |
| 25 | Emily Brown    | 14-15 |
| 25 | Stefanie Ubl   | 03-04 |
| 23 | Emily Brown    | 13-14 |
| 22 | Kenzie Wylie   | 15-16 |
| 20 | Nicole Erikson | 05-06 |
| 20 | Andrea Jensrud | 00-01 |
| 19 | Stefanie Ubl   | 02-03 |
| 18 | Peyton Parent  | 19-20 |
| 18 | Nicole Erikson | 04-05 |
| 17 | Kaitlyn Ronn   | 19-20 |
| 17 | Erin Harper    | 11-12 |
| 17 | Lindsey Kuehn  | 96-97 |
| 16 | Rachel Lentner | 17-18 |
| 16 | Judy Daleiden  | 06-07 |
| 15 | Lindsey Kuehn  | 97-98 |
| 15 | Jodi Stepaniak | 95-96 |



## ASSISTS BY A DEFENSEMAN

|    |                |       |
|----|----------------|-------|
| 29 | Emily Brown    | 16-17 |
| 26 | Kenzie Wylie   | 16-17 |
| 25 | Krista Johnson | 01-02 |
| 24 | Emily Brown    | 15-16 |
| 21 | Krista Johnson | 00-01 |
| 21 | Tiffany Hagge  | 99-00 |
| 19 | Emily Brown    | 14-15 |
| 19 | Emily Brown    | 13-14 |
| 18 | Kenzie Wylie   | 15-16 |
| 18 | Emily Miller   | 94-95 |
| 16 | Erin Harper    | 11-12 |
| 16 | Stefanie Ubl   | 03-04 |
| 16 | Stefanie Ubl   | 02-03 |
| 16 | Emily Miller   | 95-96 |
| 15 | Kaitlyn Ronn   | 21-22 |
| 15 | Rachel Lentner | 17-18 |
| 13 | Kaitlyn Ronn   | 19-20 |
| 13 | Jodi Stepaniak | 95-96 |
| 12 | Kaitlyn Ronn   | 18-19 |
| 11 | Peyton Parent  | 19-20 |
| 11 | Peyton Parent  | 18-19 |
| 11 | Dani Scholzen  | 09-10 |
| 11 | Nicole Erikson | 05-06 |
| 11 | Andrea Jensrud | 00-01 |
| 11 | Lindsey Kuehn  | 96-97 |
| 10 | Judy Daleiden  | 06-07 |
| 10 | Madeline Stoy  | 05-06 |
| 10 | Madeline Stoy  | 03-04 |

# Minnesota Ms. Hockey Goalie Award

Let's Play Hockey annually presents the Ms. Hockey Award to the top senior high school girls hockey player in the state of Minnesota. The award started in 1996, while in 1999, an additional award was added, the Senior Goaltender Award. Academics, community service, citizenship, coachability and on-ice performance prove to be the criteria for these prestigious awards.



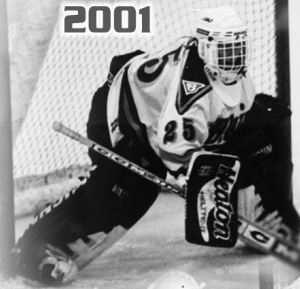
**Katie Beauduy**  
1999



**Jody Horak**  
2001



**Ashley Nixon**  
2007



# Single Season Goalie Records

## GAMES PLAYED

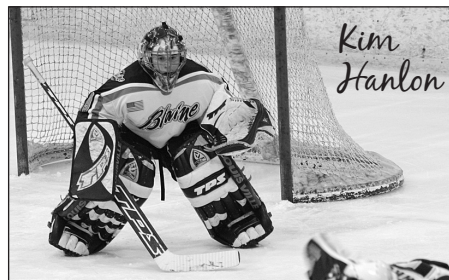
|    |                  |       |
|----|------------------|-------|
| 31 | Makayla Tilton   | 14-15 |
| 29 | Jody Horak       | 00-01 |
| 28 | Jaela O'Brien    | 17-18 |
| 28 | Makayla Tilton   | 13-14 |
| 28 | Kim Hanlon       | 03-04 |
| 28 | Kim Hanlon       | 02-03 |
| 27 | Hailey Hansen    | 19-20 |
| 27 | Tara Hoverstad   | 11-12 |
| 27 | Ashley Nixon     | 06-07 |
| 27 | Ashley Nixon     | 05-06 |
| 27 | Katie Beauduy    | 96-97 |
| 26 | Hailey Hansen    | 21-22 |
| 26 | Hailey Hansen    | 18-19 |
| 26 | Katie Beauduy    | 95-96 |
| 25 | Courtney Jensrud | 12-13 |
| 25 | Tara Hoverstad   | 10-11 |
| 25 | Jody Horak       | 99-00 |
| 25 | Katie Beauduy    | 98-99 |
| 24 | Katie Beauduy    | 97-98 |
| 20 | Jaela O'Brien    | 16-17 |
| 20 | Jessica Speller  | 94-95 |
| 19 | Hailey Hansen    | 20-21 |



## GOALS AGAINST AVERAGE

(MINIMUM 13 GAMES PLAYED)

|      |                  |               |
|------|------------------|---------------|
| .667 | Jody Horak       | 00-01 (29 GP) |
| 0.95 | Morgan Cin       | 15-16 (12 GP) |
| 1.07 | Jaela O'Brien    | 16-17 (20 GP) |
| 1.11 | Jaela O'Brien    | 15-16 (15 GP) |
| 1.28 | Makayla Tilton   | 13-14 (28 GP) |
| 1.37 | Ashley Nixon     | 04-05 (13 GP) |
| 1.45 | Katie Beauduy    | 95-96 (26 GP) |
| 1.48 | Jaela O'Brien    | 17-18 (28 GP) |
| 1.52 | Makayla Tilton   | 14-15 (31 GP) |
| 1.54 | Katie Beauduy    | 97-98 (24 GP) |
| 1.57 | Kim Hanlon       | 02-03 (28 GP) |
| 1.65 | Jessica Speller  | 94-95 (20 GP) |
| 1.66 | Jody Horak       | 99-00 (25 GP) |
| 1.67 | Katie Beauduy    | 96-97 (27 GP) |
| 1.74 | Ashley Nixon     | 06-07 (27 GP) |
| 1.85 | Kim Hanlon       | 04-05 (14 GP) |
| 1.93 | Courtney Jensrud | 12-13 (25 GP) |
| 1.96 | Kim Hanlon       | 03-04 (28 GP) |
| 1.96 | Tara Hoverstad   | 10-11 (25 GP) |



## SAVES

|     |                  |       |
|-----|------------------|-------|
| 770 | Hailey Hansen    | 19-20 |
| 698 | Hailey Hansen    | 21-22 |
| 695 | Ashley Nixon     | 06-07 |
| 650 | Tara Hoverstad   | 11-12 |
| 641 | Hailey Hansen    | 18-19 |
| 628 | Katie Beauduy    | 98-99 |
| 613 | Ashley Nixon     | 05-06 |
| 590 | Tara Hoverstad   | 10-11 |
| 580 | Kim Hanlon       | 02-03 |
| 572 | Jaela O'Brien    | 17-18 |
| 563 | Hailey Hansen    | 20-21 |
| 561 | Makayla Tilton   | 14-15 |
| 556 | Jody Horak       | 99-00 |
| 542 | Courtney Jensrud | 12-13 |
| 535 | Katie Beauduy    | 97-98 |
| 527 | Makayla Tilton   | 13-14 |
| 519 | Kim Hanlon       | 03-04 |
| 518 | Katie Beauduy    | 96-97 |
| 507 | Jody Horak       | 00-01 |
| 423 | Tara Hoverstad   | 09-10 |
| 361 | Cassy Landborg   | 07-09 |
| 362 | Katie Beauduy    | 95-96 |
| 354 | Kim Hanlon       | 04-05 |
| 329 | Kim Hanlon       | 01-02 |
| 288 | Jaela O'Brien    | 16-17 |
| 263 | Ashley Nixon     | 04-05 |

## SAVES (CONT.)

|     |                 |       |
|-----|-----------------|-------|
| 261 | Kelli Simmer    | 07-08 |
| 231 | Jaela O'Brien   | 15-16 |
| 218 | Jessica Speller | 94-95 |

## SAVE PERCENTAGE

(MINIMUM 12 GAMES PLAYED)

|      |                  |               |
|------|------------------|---------------|
| .962 | Jody Horak       | 00-01 (29 GP) |
| .940 | Morgan Cin       | 15-16 (12 GP) |
| .936 | Makayla Tilton   | 13-14 (28 GP) |
| .936 | Ashley Nixon     | 04-05 (13 GP) |
| .935 | Ashley Nixon     | 06-07 (27 GP) |
| .932 | Jaela O'Brien    | 16-17 (20 GP) |
| .932 | Kim Hanlon       | 04-05 (14 GP) |
| .932 | Katie Beauduy    | 97-98 (24 GP) |
| .931 | Hailey Hansen    | 19-20 (27 GP) |
| .931 | Jaela O'Brien    | 15-16 (15 GP) |
| .929 | Jaela O'Brien    | 17-18 (28 GP) |
| .927 | Jody Horak       | 99-00 (25 GP) |
| .924 | Hailey Hansen    | 20-21 (19 GP) |
| .924 | Kim Hanlon       | 02-03 (28 GP) |
| .923 | Hailey Hansen    | 21-22 (26 GP) |
| .923 | Makayla Tilton   | 14-15 (31 GP) |
| .921 | Tara Hoverstad   | 11-12 (27 GP) |
| .920 | Courtney Jensrud | 12-13 (25 GP) |
| .919 | Tara Hoverstad   | 10-11 (25 GP) |
| .918 | Katie Beauduy    | 98-99 (25 GP) |
| .918 | Katie Beauduy    | 96-97 (27 GP) |
| .915 | Ashley Nixon     | 05-06 (27 GP) |
| .906 | Tara Hoverstad   | 09-10 (17 GP) |
| .905 | Katie Beauduy    | 95-96 (26 GP) |
| .904 | Kim Hanlon       | 03-04 (28 GP) |
| .900 | Hailey Hansen    | 18-19 (26 GP) |

## SHUTOUTS

|    |                  |       |
|----|------------------|-------|
| 16 | Jody Horak       | 00-01 |
| 13 | Katie Beauduy    | 95-96 |
| 10 | Katie Beauduy    | 96-97 |
| 8  | Makayla Tilton   | 14-15 |
| 8  | Ashley Nixon     | 06-07 |
| 8  | Ashley Nixon     | 05-06 |
| 8  | Jody Horak       | 99-00 |
| 8  | Jessica Speller  | 94-95 |
| 7  | Hailey Hansen    | 19-20 |
| 7  | Jaela O'Brien    | 17-18 |
| 7  | Kim Hanlon       | 03-04 |
| 6  | Jaela O'Brien    | 16-17 |
| 6  | Katie Beauduy    | 98-99 |
| 5  | Morgan Cin       | 16-17 |
| 5  | Morgan Cin       | 15-16 |
| 5  | Makayla Tilton   | 13-14 |
| 5  | Courtney Jensrud | 12-13 |
| 5  | Ashley Nixon     | 04-05 |
| 5  | Kim Hanlon       | 02-03 |
| 4  | Hailey Hansen    | 21-22 |
| 4  | Jaela O'Brien    | 15-16 |
| 4  | Tara Hoverstad   | 11-12 |
| 4  | Katie Beauduy    | 97-98 |

(\*All stats prior to 2003-04 season are with 45 minute games.)



WWW.OSHOCKEY.COM

Here's to a GREAT season!

Your Work. Your Effort. Your Level.

.....  
Your Success.



**HOCKEY**

- 8 WEEK SUMMER TRAINING
- PROSPECTS/FUTURES CAMP
- GOALIE TRAINING
- SUMMER DEVELOPMENT TEAMS
- SPRING/FALL LEAGUES

- TOURNAMENTS
- D1/D3 COLLEGE SKATE
- POWER SKATING AND ROOKIES CAMP
- PROGRAMS FOR U6-COLLEGE PLAYERS!

# Bengals' in Professional Hockey



**EMILY BROWN**  
PWHCA Sonnet

## Retired Professional Bengals'



**KIERSTEN FALCK**  
ERC Ingolstadt Frauen  
Deutsche Fraueneishockey-Liga hockey league



**AMY SCHLAGEL**  
Minnesota Whitecaps  
WNHL- Retired  
2019 Isobel Cup Champion team

# Blaine Career Scoring Leaders



*Emily Brown*

## TOTAL POINTS "THE CAREER 100-POINT CLUB"

|     |                    |       |
|-----|--------------------|-------|
| 325 | Kristina Bunker    | 98-04 |
| 243 | Sammy Nixon        | 99-05 |
| 230 | Laura Tryba        | 95-97 |
| 196 | Ramsey Parent      | 16-19 |
| 191 | Kiersten Falck     | 11-14 |
| 189 | Lauren Zrust       | 04-09 |
| 180 | Gabby Rosenthal    | 15-18 |
| 176 | Paige Beebe        | 14-17 |
| 144 | Becca Perez        | 98-02 |
| 142 | Samantha Swanstrom | 11-14 |
| 136 | Tiffany Hagge      | 97-01 |
| 123 | Emily Brown        | 14-17 |
| 121 | Erica Johnson      | 95-96 |
| 115 | Lindsay Bertie     | 95-96 |
| 114 | Katie Swanstrom    | 11-14 |

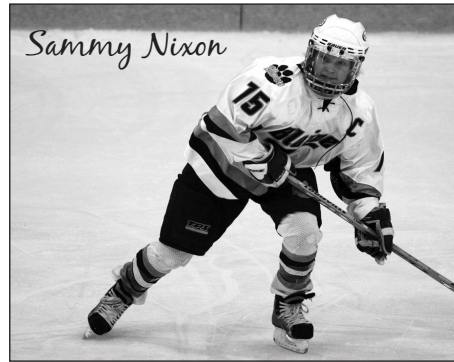
## GOALS

|     |                    |       |
|-----|--------------------|-------|
| 172 | Kristina Bunker    | 98-04 |
| 144 | Laura Tryba        | 95-97 |
| 139 | Sammy Nixon        | 99-05 |
| 114 | Lauren Zrust       | 04-09 |
| 100 | Ramsey Parent      | 16-19 |
| 94  | Gabby Rosenthal    | 15-18 |
| 86  | Paige Beebe        | 14-17 |
| 72  | Samantha Swanstrom | 11-14 |
| 72  | Tiffany Hagge      | 97-01 |
| 70  | Kiersten Falck     | 11-14 |
| 70  | Becca Perez        | 98-02 |
| 60  | Katie Swanstrom    | 11-14 |
| 59  | Erica Johnson      | 95-96 |
| 52  | Amy Schlagel       | 12-14 |
| 51  | Lindsay Bertie     | 95-96 |

## ASSISTS

|     |                 |       |
|-----|-----------------|-------|
| 153 | Kristina Bunker | 98-04 |
| 121 | Kiersten Falck  | 11-14 |
| 104 | Sammy Nixon     | 99-05 |
| 96  | Ramsey Parent   | 16-19 |

|    |                    |        |
|----|--------------------|--------|
| 90 | Paige Beebe        | 14-17  |
| 86 | Gabby Rosenthal    | 15-18  |
| 86 | Laura Tryba        | 95-97  |
| 75 | Lauren Zrust       | 04-09  |
| 74 | Becca Perez        | 98-02  |
| 70 | Samantha Swanstrom | 11-14  |
| 66 | Lindsay Bertie     | 195-96 |
| 64 | Tiffany Hagge      | 97-01  |
| 62 | Erica Johnson      | 95-96  |
| 54 | Katie Swanstrom    | 11-14  |
| 53 | Courtney Moser     | 14-17  |



*Sammy Nixon*

## POINTS BY A DEFENSEMAN

|     |                |       |
|-----|----------------|-------|
| 123 | Emily Brown    | 14-17 |
| 68  | Kenzie Wylie   | 14-17 |
| 67  | Krista Johnson | 00-02 |
| 66  | Kaitlyn Ronn   | 19-22 |
| 62  | Emily Miller   | 95-96 |
| 56  | Stefanie Ubl   | 98-04 |
| 50  | Lindsey Kuehn  | 96-99 |
| 48  | Nicole Erikson | 02-06 |
| 45  | Erin Harper    | 09-12 |
| 42  | Peyton Parent  | 18-21 |
| 41  | Judy Daleiden  | 04-09 |
| 41  | Madeline Stoy  | 02-06 |
| 39  | Tiffany Hagge* | 99-00 |
| 34  | Andrea Jensrud | 98-01 |
| 32  | Sam Auman      | 14-17 |
| 31  | Rachel Lentner | 15-18 |
| 29  | Ashley Tilton  | 05-08 |
| 28  | Ashley Osbeck  | 13-16 |
| 28  | Nicole Erikson | 02-05 |
| 28  | Jodi Stepaniak | 95-96 |
| 27  | Madeline Stoy  | 02-05 |

## GOALS BY A DEFENSEMAN

|    |                |       |
|----|----------------|-------|
| 32 | Emily Brown    | 14-17 |
| 28 | Emily Miller   | 95-96 |
| 21 | Krista Johnson | 00-02 |
| 21 | Kaitlyn Ronn   | 19-22 |

|    |                |       |
|----|----------------|-------|
| 18 | Tiffany Hagge* | 99-00 |
| 18 | Lindsey Kuehn  | 96-99 |
| 16 | Nicole Erikson | 02-06 |
| 16 | Stefanie Ubl   | 98-04 |
| 15 | Andrea Jensrud | 98-01 |
| 13 | Judy Daleiden  | 04-09 |
| 12 | Peyton Parent  | 18-20 |
| 12 | Kenzie Wylie   | 14-17 |
| 12 | Ashley Tilton  | 05-08 |
| 11 | Jodi Stepaniak | 95-96 |

## ASSISTS BY A DEFENSEMAN

|    |                     |       |
|----|---------------------|-------|
| 91 | Emily Brown         | 14-17 |
| 56 | Kenzie Wylie        | 14-17 |
| 46 | Krista Johnson      | 00-02 |
| 45 | Kaitlyn Ronn        | 19-22 |
| 40 | Stefanie Ubl        | 98-04 |
| 37 | Erin Harper         | 09-12 |
| 34 | Madeline Stoy       | 02-06 |
| 34 | Emily Miller        | 95-96 |
| 32 | Nicole Erikson      | 02-06 |
| 32 | Lindsey Kuehn       | 96-99 |
| 28 | Judy Daleiden       | 04-09 |
| 30 | Peyton Parent       | 18-21 |
| 27 | Rachel Lentner      | 15-18 |
| 26 | Sam Auman           | 14-17 |
| 24 | Ashley Osbeck       | 13-16 |
| 23 | Kirstie Ziegler     | 14-17 |
| 21 | Tiffany Hagge*      | 99-00 |
| 20 | Sam Auman           | 14-16 |
| 19 | Andrea Jensrud      | 98-01 |
| 17 | Ashley Tilton       | 05-08 |
| 17 | Kaitlin Howard      | 03-05 |
| 13 | Alex Barber-Verdick | 10-13 |
| 13 | Jodi Stepaniak      | 95-96 |

\*Hagge played defense for one season (1999-00). Prior to that she played two seasons as a forward. Only her 1999-00 statistics count toward defensemen's records.



*Kristina Bunker*

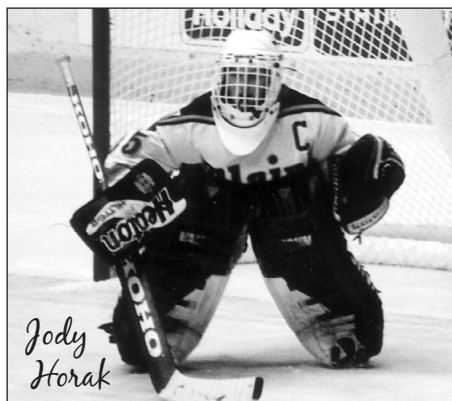
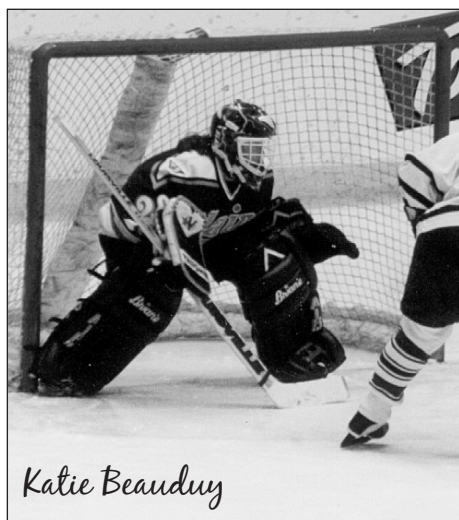
# Blaine Career Goalie Records

## GAMES PLAYED

|     |                  |       |
|-----|------------------|-------|
| 102 | Katie Beauduy    | 96-99 |
| 98  | Hailey Hansen    | 19-22 |
| 86  | Kim Hanlon       | 01-05 |
| 70  | Tara Hoverstad   | 09-12 |
| 67  | Ashley Nixon     | 04-07 |
| 63  | Jaela O'Brien    | 16-18 |
| 62  | Makayla Tilton   | 12-15 |
| 54  | Jody Horak       | 99-01 |
| 38  | Cassy Landborg   | 07-10 |
| 27  | Courtney Jensrud | 11-13 |
| 25  | Morgan Cin       | 14-17 |
| 25  | Kelli Simmer     | 07-09 |
| 20  | Jessica Speller  | 94-95 |

## MINUTES PLAYED

|       |                  |       |
|-------|------------------|-------|
| 5,032 | Hailey Hansen    | 19-22 |
| 4,706 | Katie Beauduy    | 96-99 |
| 4,151 | Kim Hanlon       | 01-05 |
| 3,678 | Tara Hoverstad   | 09-12 |
| 3,482 | Ashley Nixon     | 04-07 |
| 3,237 | Jaela O'Brien    | 16-18 |
| 3,100 | Makayla Tilton   | 12-15 |
| 2,519 | Jody Horak       | 99-01 |
| 2,003 | Cassy Landborg   | 07-10 |
| 1,351 | Courtney Jensrud | 11-13 |
| 1,229 | Kelli Simmer     | 07-09 |
| 1,185 | Morgan Cin       | 14-17 |
| 900   | Jessica Speller  | 94-95 |



## WINS

|    |                  |       |
|----|------------------|-------|
| 63 | Katie Beauduy    | 96-99 |
| 61 | Kim Hanlon       | 01-05 |
| 51 | Hailey Hansen    | 19-22 |
| 46 | Jaela O'Brien    | 16-18 |
| 45 | Makayla Tilton   | 12-15 |
| 42 | Jody Horak       | 99-01 |
| 39 | Ashley Nixon     | 04-07 |
| 29 | Tara Hoverstad   | 09-12 |
| 19 | Morgan Cin       | 14-17 |
| 18 | Courtney Jensrud | 11-13 |
| 17 | Cassy Landborg   | 07-10 |
| 17 | Jessica Speller  | 94-95 |

## GOALS AGAINST AVERAGE

(MINIMUM 30 GAMES PLAYED)

|      |                |                |
|------|----------------|----------------|
| 1.19 | Jody Horak     | 99-01 (54 GP)  |
| 1.28 | Jaela O'Brien  | 16-18 (63 GP)  |
| 1.41 | Makayla Tilton | 12-15 (62 GP)  |
| 1.71 | Katie Beauduy  | 96-99 (102 GP) |
| 1.80 | Ashley Nixon   | 04-07 (67 GP)  |
| 1.88 | Kim Hanlon     | 01-05 (86 GP)  |

## SHUTOUTS

|    |                 |       |
|----|-----------------|-------|
| 33 | Katie Beauduy   | 96-99 |
| 24 | Jody Horak      | 99-01 |
| 21 | Ashley Nixon    | 04-07 |
| 17 | Hailey Hansen   | 19-22 |
| 17 | Jaela O'Brien   | 16-18 |
| 14 | Kim Hanlon      | 01-05 |
| 13 | Makayla Tilton  | 12-15 |
| 10 | Morgan Cin      | 14-17 |
| 8  | Tara Hoverstad  | 09-12 |
| 8  | Jessica Speller | 94-95 |

## SAVES

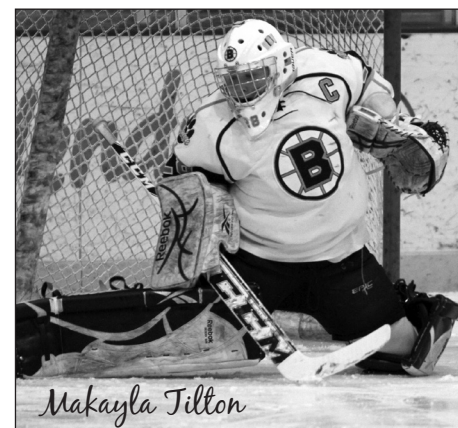
|       |                  |       |
|-------|------------------|-------|
| 2,672 | Hailey Hansen    | 19-22 |
| 2,043 | Katie Beauduy    | 96-99 |
| 1,738 | Kim Hanlon       | 01-05 |
| 1,671 | Tara Hoverstad   | 09-12 |
| 1,571 | Ashley Nixon     | 04-07 |
| 1,137 | Makayla Tilton   | 12-15 |
| 1,091 | Jaela O'Brien    | 16-18 |
| 1,063 | Jody Horak       | 99-01 |
| 798   | Cassy Landborg   | 07-10 |
| 577   | Courtney Jensrud | 11-13 |
| 456   | Kelli Simmer     | 07-09 |
| 274   | Morgan Cin       | 14-17 |
| 218   | Jessica Speller  | 94-95 |



## SAVE PERCENTAGE

(MINIMUM 30 GAMES PLAYED)

|      |                |                |
|------|----------------|----------------|
| .943 | Jody Horak     | 99-01 (54 GP)  |
| .931 | Jaela O'Brien  | 16-18 (63 GP)  |
| .930 | Makayla Tilton | 12-15 (62 GP)  |
| .927 | Ashley Nixon   | 04-07 (67 GP)  |
| .920 | Hailey Hansen  | 19-22 (98 GP)  |
| .919 | Katie Beauduy  | 96-99 (102 GP) |
| .916 | Tara Hoverstad | 09-12 (70 GP)  |
| .915 | Kim Hanlon     | 01-05 (72 GP)  |
| .886 | Cassy Landborg | 07-10 (38 GP)  |



# All time series results

| OPPONENT                           | W         | L         | T        | LAST MEETING RESULT (DATE/LOCATION)        |
|------------------------------------|-----------|-----------|----------|--------------------------------------------|
| Academy of Holy Angels             | 0         | 5         | 0        | B 3, AHA 8 (11-23-07 @ Richfield)          |
| Albert Lea                         | 1         | 0         | 0        | B 5, AL 2 (12-28-06 @ Austin)              |
| <b>Andover</b>                     | <b>23</b> | <b>17</b> | <b>2</b> | <b>B 1, A 6 (2/12/22 @ Andover CC)</b>     |
| <b>Anoka</b>                       | <b>33</b> | <b>18</b> | <b>4</b> | <b>B 3, A 0 (1/11/22 @ Anoka)</b>          |
| Anoka/Champlin Park                | 5         | 0         | 0        | B 8, ACP 0 (2-14-96 @ Coliseum)            |
| Anoka/Spring Lake Park             | 4         | 0         | 0        | B 4, ASLP 1 (2-23-21 @ Anoka Arena)        |
| Apple Valley                       | 2         | 1         | 0        | B 7, AV 3 (12-29-01 @ Wakota)              |
| Armstrong                          | 1         | 1         | 0        | B 3, Arm 1 (1-15-11 @ Plymouth Arena)      |
| <b>Armstrong/Cooper</b>            | <b>12</b> | <b>2</b>  | <b>2</b> | <b>B 1, AC 1 (12/18/21 @ Fogerty)</b>      |
| Austin                             | 1         | 0         | 0        | B 7, Aus 0 (12-30-06 @ Austin)             |
| Bemidji                            | 1         | 0         | 0        | B 5, Bem 4 (12-28-07 @ Edina)              |
| Benilde St. Margaret               | 3         | 5         | 1        | B 2, BSM 1 (12-10-15 @ Fogerty)            |
| Bismarck                           | 3         | 0         | 0        | B 3, Bis 1 (12-26-9 @ Fogerty)             |
| Blake                              | 4         | 3         | 1        | B 1, Blk 4 (12-7-19 @ Fogerty)             |
| Bloomington Jefferson              | 3         | 3         | 1        | B 6, BJ 3 (11-21-02 @ Fogerty)             |
| Breck                              | 1         | 0         | 0        | B 15, Bre 0 (12-13-94 @ Breck)             |
| Burnsville                         | 1         | 1         | 0        | B 2, BV 4 (12-9-96 @ Burnsville)           |
| Centennial                         | 17        | 23        | 2        | B 5, Cent 8 (3-18-21 @ Fogerty)            |
| <b>Centennial/Spring Lake Park</b> | <b>1</b>  | <b>0</b>  | <b>0</b> | <b>B 2, CSLP 1 (1/4/22 @ Fogerty)</b>      |
| Central Wisconsin                  | 2         | 0         | 0        | B 6, CWS 1 (12-29-19 @ Fogerty)            |
| Champlin Park                      | 34        | 3         | 2        | B 7, CP 1 (1-28-17 @ Fogerty)              |
| <b>Champlin Park/Coon Rapids</b>   | <b>5</b>  | <b>2</b>  | <b>0</b> | <b>B 1, CPR 2 (2/2/22 @ Fogerty)</b>       |
| Chaska                             | 1         | 0         | 0        | B 3, Cha1 (12-30-04 @ Wakota)              |
| Chisago Lakes                      | 1         | 0         | 0        | B 6, CL 2 (12/11/2021 @ Chisago)           |
| Cloquet                            | 5         | 3         | 0        | B 0, Clo 1 (12-29-11 @ Eden Prairie)       |
| Coon Rapids                        | 29        | 9         | 4        | B 2, CR 2 ot (1-10-15 @ CRIC)              |
| <b>Crookston</b>                   | <b>0</b>  | <b>0</b>  | <b>0</b> |                                            |
| Dodge County                       | 1         | 0         | 0        | B 3, DC 1 (2-3-18 @ Fogerty)               |
| Duluth                             | 2         | 3         | 0        | B 3, Dul 2 (12-22-07 @ The DECC)           |
| Eagan                              | 2         | 2         | 0        | B 0, Eagan 4 (12-28-11 @ Eden Prairie)     |
| <b>East Ridge</b>                  | <b>0</b>  | <b>0</b>  | <b>0</b> |                                            |
| Eastview                           | 1         | 0         | 0        | B 4, EV 3 ot (2-21-15 @ Ridder Arena)      |
| Eden Prairie                       | 1         | 2         | 1        | B 2, EP 2 ot (1-12-12 @ Eden Prairie)      |
| Edina                              | 3         | 5         | 2        | B 1, Edi 4 (1-9-20 @ Fogerty)              |
| <b>Elk River</b>                   | <b>33</b> | <b>18</b> | <b>4</b> | <b>B 2, ER 5 (12/7/21 @ Fogerty)</b>       |
| <b>Fargo South</b>                 | <b>0</b>  | <b>0</b>  | <b>0</b> |                                            |
| Fergus Falls                       | 1         | 1         | 0        | B 3, FF 5 (12-28-18 @ Fogerty)             |
| <b>Forest Lake</b>                 | <b>6</b>  | <b>4</b>  | <b>0</b> | <b>B 7, FL 2 (2/10/22 @ Fogerty)</b>       |
| <b>Fort Frances</b>                | <b>0</b>  | <b>0</b>  | <b>0</b> | <b>B 2, FL 3 (12-29-17 @ Fogerty)</b>      |
| <b>Grand Rapids</b>                | <b>8</b>  | <b>6</b>  | <b>1</b> | <b>B 1, GR 2 (11/27/21 @ Grand Rapids)</b> |
| <b>Hastings</b>                    | <b>1</b>  | <b>1</b>  | <b>0</b> | <b>B 3, Has 5 (12-6-03 @ Fogerty)</b>      |
| Hayward                            | 2         | 0         | 0        | B 7, Hay 0 (12-29-15 @ Fogerty)            |

| OPPONENT                 | W          | L          | T         | LAST MEETING RESULT (DATE/LOCATION)       |
|--------------------------|------------|------------|-----------|-------------------------------------------|
| Henry-Sibley             | 0          | 0          | 1         | B 2, HS 2 ot (12-29-99 @ St. Croix)       |
| <b>Hibbing</b>           | <b>16</b>  | <b>4</b>   | <b>1</b>  | <b>B 4, H 1 (11/26/21 @ Grand Rapids)</b> |
| <b>Hill-Murray</b>       | <b>5</b>   | <b>5</b>   | <b>1</b>  | <b>B 0, HM 2 (11/30/21 @ Fogerty)</b>     |
| Hopkins                  | 4          | 0          | 0         | B 4, Hop 2 (12-30-16 @ Fogerty)           |
| Hopkins/St. Louis Park   | 2          | 0          | 0         | B 2, HP 0 (12/28/2022 @ Fogerty)          |
| Irondale                 | 5          | 6          | 0         | B 11, Iron 0 (1-19-19 @ Fogerty)          |
| Irondale/Mounds View     | 3          | 0          | 0         | B 3, IMV 0 (12-9-95 @ East Bethel)        |
| Lakeville South          | 0          | 3          | 0         | B 2, LS 7 (12/30/21 @ Fogerty)            |
| <b>Maple Grove</b>       | <b>31</b>  | <b>17</b>  | <b>3</b>  | <b>B 3, MG 4 (1/22/2022 @ MGCC)</b>       |
| Minneapolis Novas        | 2          | 0          | 0         | B 4, MN 0 (12-29-06 @ Austin)             |
| <b>Minnetonka</b>        | <b>5</b>   | <b>4</b>   | <b>1</b>  | <b>B 1, M 4 (1/29/22 @ Pagel)</b>         |
| Moorhead                 | 1          | 0          | 0         | B 4, Moo 2 (12-23-97 @ Moorhead)          |
| Mounds View              | 8          | 5          | 0         | B 5, MV 2 (2-10-15 @ Roseville)           |
| <b>Mound Westonka</b>    | <b>0</b>   | <b>1</b>   | <b>0</b>  | <b>B 2, MW 3 (1/8/22 @ Fogerty)</b>       |
| North Metro              | 16         | 3          | 2         | B 10, NM 0 (12-3-16 @ Brooklyn Park CC)   |
| North St. Paul           | 1          | 2          | 0         | B 4, NSP 3 ot (2-9-07 @ Stillwater)       |
| Onalaska                 | 2          | 0          | 0         | B 10, Ona 1 (12-27-13 @ Fogerty)          |
| Orono                    | 2          | 1          | 0         | B 0, Oro 8 (3-12-21 @ Fogerty)            |
| Orono/Mound/Westonka     | 1          | 0          | 0         | B 3, OMW 0 (2-12-97 @ Coliseum)           |
| Osseo                    | 22         | 0          | 0         | B 9, Oss 0 (1-28-06 @ Osseo)              |
| <b>Osseo/Park Center</b> | <b>6</b>   | <b>0</b>   | <b>0</b>  | <b>B 4, OPC 1 (1/25/21 @ Dick Vraa)</b>   |
| Owatonna                 | 1          | 0          | 0         | B 9, Owa 0 (2-20-97 @ Coliseum)           |
| Park Center              | 18         | 10         | 0         | B 1, PC 3 (1-14-06 @ Fogerty)             |
| Proctor Hermantown       | 5          | 2          | 0         | B 1, PH 2 ot (1-30-20 @ St. Lucas Arena)  |
| Rochester Century        | 1          | 0          | 0         | B 11, RC 4 (1-13-04 @ Rochester)          |
| <b>Rogers</b>            | <b>5</b>   | <b>1</b>   | <b>2</b>  | <b>B 2, R 2 (1/7/22 @ Fogerty)</b>        |
| Roseau                   | 1          | 0          | 0         | B 7, Ros 1 (2-23-17 Xcel Center)          |
| Rosemount                | 1          | 0          | 0         | B 4, R 0 (1/26/2022 @ Rosemount CC)       |
| Roseville                | 2          | 6          | 2         | B 2, R 1, (12/9/21 @ Roseville)           |
| South St. Paul           | 5          | 5          | 0         | B 3, SSP 0 (12-27-05 @ Wakota)            |
| Spring Lake Park/SA      | 7          | 0          | 0         | B 4, SLP 3 (2-7-15 @ Roseville)           |
| Spring Lake Park/CR      | 2          | 0          | 0         | B 4, SLP 0 (11-19-16 @ Fogerty)           |
| Spring Lake Park         | 2          | 0          | 0         | B 4, SLP 2 (1-22-19 @ Fogerty)            |
| Stillwater               | 8          | 8          | 0         | B 6, Still 0 (1-21-16 @ Fogerty)          |
| St. Paul Academy         | 0          | 1          | 1         | B 2, SPA 2 ot (11-16-96 @ SPA)            |
| St. Paul Blades          | 1          | 0          | 0         | B 9, SPB 1 (2-10-95 @ Wakota)             |
| St. Paul United          | 1          | 0          | 0         | B 5, SPU 1 (11-14-19 @ Fogerty)           |
| Tartan                   | 1          | 0          | 0         | B 7, Tar 0 (2-9-01 @ Fogerty)             |
| Thief River Falls        | 0          | 1          | 0         | B 1, TRF 2 (12-31-14 @ Fogerty)           |
| Totino Grace             | 6          | 0          | 0         | B 9, TG 0 (12-17-19 @ Brooklyn Park CC)   |
| Wayzata                  | 3          | 0          | 0         | B 4, Way 2 (12-30-99 @ St. Croix)         |
| White Bear Lake          | 12         | 7          | 0         | B 4, WB 0 (12/29/21 @ Fogerty)            |
| <b>TOTAL</b>             | <b>469</b> | <b>231</b> | <b>41</b> |                                           |

# Blaine's All State Winners

22



23



**LAURA TRYBA**  
(1995, 1996, 1997)

| Year         | GP        | G          | A         | TP         |
|--------------|-----------|------------|-----------|------------|
| 94-95        | 20        | 48         | 39        | 87         |
| 95-96        | 26        | 45         | 27        | 72         |
| 96-97        | 26        | 51         | 20        | 71         |
| <b>TOTAL</b> | <b>72</b> | <b>144</b> | <b>86</b> | <b>230</b> |



**EMILY MILLER**  
(1996)

| Year         | GP        | G         | A         | TP        |
|--------------|-----------|-----------|-----------|-----------|
| 94-95        | 20        | 14        | 18        | 32        |
| 95-96        | 26        | 14        | 16        | 30        |
| <b>TOTAL</b> | <b>46</b> | <b>28</b> | <b>34</b> | <b>62</b> |



**KATIE BEAUDUY**  
(1997, 1998, 1999)

| Year         | G          | W         | L         | T        | Min         | GA         | GAA         | SV          | SV%         | SO        |
|--------------|------------|-----------|-----------|----------|-------------|------------|-------------|-------------|-------------|-----------|
| 95-96        | 26         | 21        | 4         | 1        | 1178        | 38         | 1.45        | 362         | .905        | 13        |
| 96-97        | 27         | 19        | 7         | 1        | 1237        | 46         | 1.67        | 518         | .918        | 10        |
| 97-98        | 24         | 10        | 10        | 4        | 1138        | 39         | 1.54        | 535         | .932        | 4         |
| 98-99        | 25         | 13        | 11        | 1        | 1153        | 56         | 2.19        | 628         | .918        | 6         |
| <b>TOTAL</b> | <b>102</b> | <b>63</b> | <b>32</b> | <b>7</b> | <b>4706</b> | <b>179</b> | <b>1.71</b> | <b>2043</b> | <b>.919</b> | <b>33</b> |



**JODY HORAK**  
(2000, 2001)

| Year         | G         | W         | L        | T        | Min         | GA        | GAA         | SV          | SV%         | SO        |
|--------------|-----------|-----------|----------|----------|-------------|-----------|-------------|-------------|-------------|-----------|
| 99-00        | 25        | 17        | 6        | 2        | 1189        | 44        | 1.66        | 556         | .927        | 8         |
| 00-01        | 29        | 25        | 1        | 3        | 1330        | 20        | .677        | 507         | .962        | 16        |
| <b>Total</b> | <b>54</b> | <b>42</b> | <b>7</b> | <b>5</b> | <b>2519</b> | <b>64</b> | <b>1.19</b> | <b>1063</b> | <b>.943</b> | <b>24</b> |



**TIFFANY HAGGE**  
(2000, 2001, 2002)

| Year         | GP                   | G         | A         | TP         |
|--------------|----------------------|-----------|-----------|------------|
| 97-98        | 22                   | 6         | 10        | 16         |
| 98-99        | 23                   | 13        | 7         | 20         |
| 99-00        | 25                   | 18        | 21        | 39         |
| 00-01        | 29                   | 35        | 26        | 61         |
| 01-02        | Stats not available. |           |           |            |
| <b>TOTAL</b> | <b>99</b>            | <b>72</b> | <b>64</b> | <b>136</b> |



**KRISTA JOHNSON**  
(2002)

| Year         | GP        | G         | A         | TP        |
|--------------|-----------|-----------|-----------|-----------|
| 00-01        | 29        | 6         | 21        | 27        |
| 01-02        | 27        | 15        | 25        | 40        |
| <b>TOTAL</b> | <b>56</b> | <b>21</b> | <b>46</b> | <b>67</b> |



## STEFANIE UBL (2004)

| Year         | GP         | G         | A         | TP        |
|--------------|------------|-----------|-----------|-----------|
| 98-99        | 11         | 0         | 0         | 0         |
| 99-00        | 25         | 2         | 1         | 3         |
| 00-01        | 29         | 2         | 7         | 9         |
| 01-02        | NA         | NA        | NA        | NA        |
| 02-03        | 27         | 3         | 16        | 19        |
| 03-04        | 23         | 9         | 16        | 25        |
| <b>TOTAL</b> | <b>115</b> | <b>16</b> | <b>40</b> | <b>56</b> |



## KRISTINA BUNKER (2001, 02, 03, & 04)

| Year         | GP         | G          | A          | TP         |
|--------------|------------|------------|------------|------------|
| 98-99        | 15         | 4          | 4          | 8          |
| 99-00        | 25         | 15         | 11         | 26         |
| 00-01        | 29         | 29         | 31         | 60         |
| 01-02        | 27         | 36         | 41         | 77         |
| 02-03        | 28         | 45         | 35         | 80         |
| 03-04        | 28         | 43         | 31         | 74         |
| <b>TOTAL</b> | <b>152</b> | <b>172</b> | <b>153</b> | <b>325</b> |



## KIM HANLON (2005)

| Year         | G         | W         | L         | T        | Min         | GA         | GAA         | SV          | SV%         | SO        |
|--------------|-----------|-----------|-----------|----------|-------------|------------|-------------|-------------|-------------|-----------|
| 01-02        | 16        | 12        | 2         | 2        | 739         | 37         | 2.25        | 329         | .888        | 1         |
| 02-03        | 28        | 20        | 6         | 2        | 1263        | 44         | 1.57        | 536         | .924        | 5         |
| 03-04        | 28        | 19        | 9         | 0        | 1431        | 55         | 1.96        | 519         | .904        | 7         |
| 04-05        | 14        | 10        | 4         | 0        | 718         | 26         | 1.85        | 354         | .932        | 1         |
| <b>TOTAL</b> | <b>86</b> | <b>61</b> | <b>21</b> | <b>4</b> | <b>4151</b> | <b>162</b> | <b>1.88</b> | <b>1738</b> | <b>.915</b> | <b>14</b> |



## ASHLEY NIXON (2006, 2007)

| Year         | G         | W         | L         | T        | Min         | GA         | GAA         | SV          | SV%         | SO        |
|--------------|-----------|-----------|-----------|----------|-------------|------------|-------------|-------------|-------------|-----------|
| 04-05        | 13        | 11        | 2         | 0        | 672         | 18         | 1.37        | 263         | .936        | 5         |
| 05-06        | 27        | 12        | 14        | 1        | 1404        | 57         | 2.07        | 613         | .915        | 8         |
| 06-07        | 27        | 16        | 8         | 3        | 1406        | 48         | 1.74        | 695         | .935        | 8         |
| <b>Total</b> | <b>67</b> | <b>39</b> | <b>24</b> | <b>4</b> | <b>3482</b> | <b>123</b> | <b>1.80</b> | <b>1571</b> | <b>.927</b> | <b>21</b> |



## SAMMY NIXON (2005)

| Year         | GP         | G          | A          | TP         |
|--------------|------------|------------|------------|------------|
| 99-00        | 25         | 9          | 5          | 14         |
| 00-01        | 29         | 8          | 5          | 13         |
| 01-02        | 27         | 14         | 14         | 28         |
| 02-03        | 28         | 32         | 26         | 58         |
| 03-04        | 28         | 32         | 34         | 66         |
| 04-05        | 27         | 44         | 20         | 64         |
| <b>TOTAL</b> | <b>164</b> | <b>139</b> | <b>104</b> | <b>243</b> |



## LAUREN ZRUST (2008)

| Year         | GP         | G          | A         | TP         |
|--------------|------------|------------|-----------|------------|
| 04-05        | 27         | 5          | 4         | 9          |
| 05-06        | 27         | 16         | 15        | 31         |
| 06-07        | 27         | 31         | 22        | 53         |
| 07-08        | 26         | 30         | 15        | 45         |
| 08-09        | 27         | 32         | 19        | 51         |
| <b>TOTAL</b> | <b>134</b> | <b>114</b> | <b>75</b> | <b>189</b> |



## KIERSTEN FALCK (2013, 2014)

| Year         | GP         | G          | A          | Pts        | Pen       | PIM          | +/-        |
|--------------|------------|------------|------------|------------|-----------|--------------|------------|
| 10-11        | 26         | 12         | 15         | 27         | 13        | 26:00        | +7         |
| 11-12        | 28         | 14         | 32         | 46         | 13        | 26:00        | +19        |
| 12-13        | 26         | 23         | 44         | 67         | 18        | 36:00        | +42        |
| 13-14        | 108        | 70         | 121        | 191        |           |              |            |
| <b>TOTAL</b> | <b>188</b> | <b>119</b> | <b>212</b> | <b>331</b> | <b>44</b> | <b>88:00</b> | <b>+68</b> |



# Build Balance

CHIROPRACTIC CENTER

We are a dedicated family practice that focuses on the body's ability to heal itself by providing spinal adjustments, education and a loving environment for families to thrive in.

[www.buildandbalancechiro.com](http://www.buildandbalancechiro.com)

Hours:

Monday-Thurs 8 am-12 pm | 2 pm-6 pm

Friday 7 am-12 pm | 2 pm-5 pm

12203 Aberdeen St NE

Blaine, MN 55449

**763-785-4120**



# Blaine's All State Winners

22



23

## EMILY BROWN (2016, 2017)



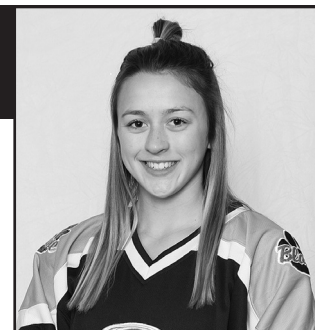
| Year         | GP         | G         | A         | Pts        | Pen       | PIM          | +/-        |
|--------------|------------|-----------|-----------|------------|-----------|--------------|------------|
| 13-14        | 28         | 4         | 19        | 23         | 5         | 10:00        | 34         |
| 14-15        | 31         | 6         | 19        | 25         | 8         | 16:00        | 30         |
| 15-16        | 23         | 6         | 24        | 30         | 7         | 14:00        | 37         |
| 16-17        | 30         | 16        | 29        | 45         | 7         | 14:00        | 51         |
| <b>TOTAL</b> | <b>112</b> | <b>32</b> | <b>91</b> | <b>123</b> | <b>27</b> | <b>54:00</b> | <b>152</b> |

## PAIGE BEEBE (2016, 2017)



| Year         | GP         | G         | A         | Pts        | Pen       | PIM           | +/-        |
|--------------|------------|-----------|-----------|------------|-----------|---------------|------------|
| 13-14        | 28         | 13        | 17        | 30         | 16        | 32:00         | 35         |
| 14-15        | 31         | 23        | 12        | 35         | 19        | 38:00         | 25         |
| 15-16        | 27         | 28        | 26        | 54         | 13        | 26:00         | 48         |
| 16-17        | 30         | 22        | 35        | 57         | 14        | 31:00         | 64         |
| <b>TOTAL</b> | <b>116</b> | <b>86</b> | <b>90</b> | <b>176</b> | <b>62</b> | <b>127:00</b> | <b>172</b> |

## GABBY ROSENTHAL (2017, 2018)



| Year         | GP         | G         | A         | Pts        | Pen       | PIM          | +/-        |
|--------------|------------|-----------|-----------|------------|-----------|--------------|------------|
| 14-15        | 31         | 9         | 13        | 22         | 5         | 10:00        | 26         |
| 15-16        | 27         | 22        | 20        | 42         | 7         | 14:00        | 45         |
| 16-17        | 30         | 29        | 32        | 61         | 15        | 30:00        | 55         |
| 17-18        | 28         | 34        | 21        | 55         | 14        | 28:00        | 45         |
| <b>TOTAL</b> | <b>116</b> | <b>94</b> | <b>86</b> | <b>180</b> | <b>41</b> | <b>82:00</b> | <b>171</b> |

## RAMSEY PARENT (2019)



| Year         | GP         | G          | A         | Pts        | Pen       | PIM          | +/-        |
|--------------|------------|------------|-----------|------------|-----------|--------------|------------|
| 15-16        | 27         | 25         | 22        | 47         | 7         | 14:00        | 39         |
| 16-17        | 30         | 25         | 30        | 55         | 4         | 28:00        | 59         |
| 17-18        | 28         | 21         | 31        | 52         | 10        | 20:00        | 40         |
| 18-19        | 27         | 29         | 13        | 42         | 9         | 18:00        | 10         |
| <b>TOTAL</b> | <b>112</b> | <b>100</b> | <b>96</b> | <b>196</b> | <b>40</b> | <b>80:00</b> | <b>148</b> |

## HAILEY HANSEN (2020, 2021, 2022)

| Year         | G         | W - L - T          | Min         | GA         | GAA         | SV          | SV%         | SO        | Assists  |
|--------------|-----------|--------------------|-------------|------------|-------------|-------------|-------------|-----------|----------|
| 18-19        | 26        | 12 - 13 - 1        | 1342        | 71         | 2.70        | 641         | .900        | 3         | 0        |
| 19-20        | 27        | 16 - 11 - 0        | 1390        | 57         | 2.09        | 770         | .931        | 7         | 0        |
| 20-21        | 19        | 11 - 8 - 0         | 949         | 46         | 2.91        | 563         | .924        | 3         | 1        |
| 21-22        | 26        | 12 - 11 - 3        | 1351        | 58         | 2.19        | 698         | .923        | 4         | 1        |
| <b>TOTAL</b> | <b>98</b> | <b>51 - 43 - 4</b> | <b>5032</b> | <b>232</b> | <b>2.35</b> | <b>2672</b> | <b>.920</b> | <b>17</b> | <b>2</b> |



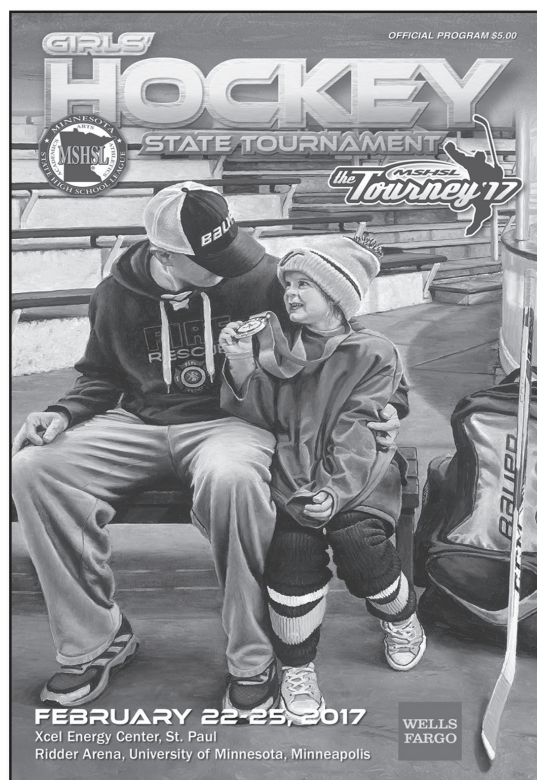
**2016-2017**

**Blaine 7 – Roseau 1  
State Quarterfinals**

**Blaine 5 – Hill-Murray 1  
State Semifinals**

**Blaine 0 – Edina 4  
State Championship**

**STATE RUNNER-UP**



Row 1 (L to R): Morgan Cin, Courtney Moser, Sarah Ganley, Sam Auman, Paige Beebe, Kenzie Wylie, Emily Brown, Kirsten Ziegler, Miranda Zepeda, Gina Rosvold, Jaela O'Brien

Row 2 (L to R): Coach Tim Stickney, Coach Calla Athman, Manager Amber Penner, Emily Argeros, Lauren Driste, Ramsey Parent, Abby Jones, Kyla Aamodt, Rachel Lentner, Gabby Rosenthal, Megan Treece, Mackenzie Anderson, Coach Steve Guider, Coach Peter McKenzie, Coach Tim Morris

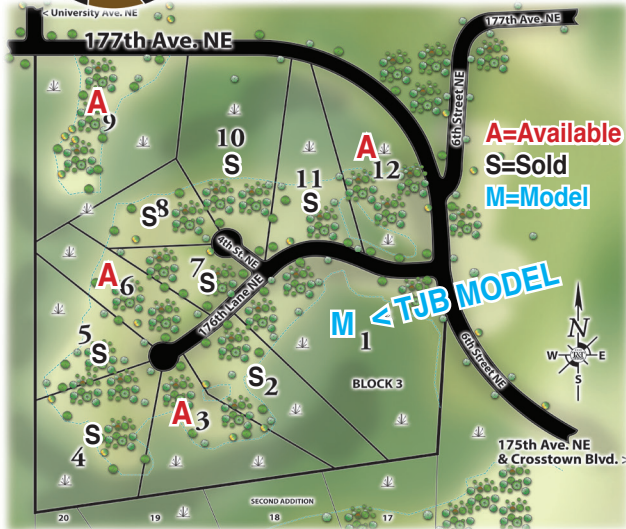
Row 3 (L to R): DeAnna LeMire, Abby Murphy, Megan McKenzie, Ellen Postudensek, Paije Ondov, Laura Fitzsimons, Haley Zahratka, Morgan Reimann, Tayah Lindsay, Kayla Tyra, Sonia Rambhajan

# 2 Deluxe Developments w/Wooded Acreage Lots

*by Your Favorite & Trusted Custom Design Builder!*



## DEER ISLAND

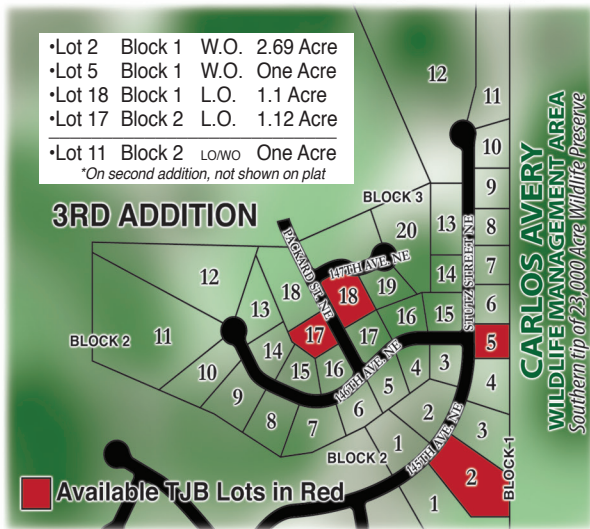


- 4 Choice Upper Bracket Sites
- Andover Schools
- 1-6 Acre Wooded Lots w/Ponds & Beautiful Views
- Homes from High 900K **Taking Lot Holds NOW!**



## HIDDEN FOREST

- Lot 2 Block 1 W.O. 2.69 Acre
  - Lot 5 Block 1 W.O. One Acre
  - Lot 18 Block 1 L.O. 1.1 Acre
  - Lot 17 Block 2 L.O. 1.12 Acre
  - Lot 11 Block 2 LowO One Acre
- \*On second addition, not shown on plat*



- Ponds, Wetlands, Wooded, Backs Up to Carlos Avery Wildlife Area (a 23,000 Acre Preserve)
- Blaine Schools
- Homes from High 900K **CALL TODAY TO BUILD YOUR WAY!**

**CARLOS AVERY**  
WILDLIFE MANAGEMENT AREA  
Southern tip of 23,000 Acre Wildlife Preserve



Since 1980

**WE TAKE TRADES!**  
DESIGN & BUILD NEW ON OUR LOT OR YOURS.

REMODEL THE WAY YOU WANT IT!

[www.TJBHomes.com](http://www.TJBHomes.com)

Tom: 763.286.6868

Justin: 763.286.4255

**CASH FOR TEARDOWNS!**

FAMILY OWNED & OPERATED FOR 40+ YEARS

MN LIC. #BC001845





**Dr. Andrew Wahl**

*Board Certified Orthodontist*

[www.discoverbraces.com](http://www.discoverbraces.com)

612-788-9666



*The highest commitment to excellence.*



**Incognito**<sup>TM</sup>  
Hidden Braces



**Minnesota**  
Monthly

**BEST DENTISTS 2021**



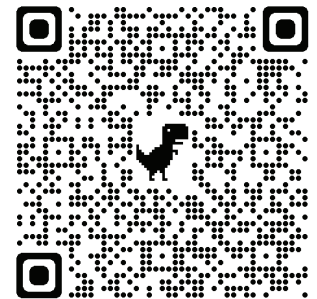
to be sure.

**CLARITY**<sup>TM</sup> | **ADVANCED**  
advanced ceramic brackets



**Mental Fitness Training for Athletes**

**Watch Mental Fitness Fridays:**



# Bengals Excel in Academics 22 23

## NATIONAL HONOR SOCIETY



(L to R): Edin Erie, Paige Nowicki, Hailey Hansen, Gracyn Knowles

## ACADEMIC LETTER WINNERS



Row 1 (L to R): Morgan Zenk, Grace Chapman, Paige Nowicki, Macy Janssen, Hailey Hansen, Kendal Dean, Audrey Schwark, Mandy Larson

Row 2 (L to R): Miyah Gunter, Taylor Olson, Ellie Thompson, Bella Brady, Kayla Shaffer, Cierra Ledeen, Gracyn Knowles, McKenna Jacobsen

Row 3 (L to R): Isabella Slawson, Edin Erie, Jessica McClaren, Jayla Iverson, Leah Osendorf, Bella Hunter, Megan Wallin

Not Pictured: Emily Vogel

# Bengal Captains



Macy Janssen, Hailey Hansen, Kendal Dean



**MN Plumbing Pro**  
Licensed, Bonded, and Insured  
Light Commercial  
Residential  
Remodel  
Service  
763-688-1486  
info@mnplumbingpro.com

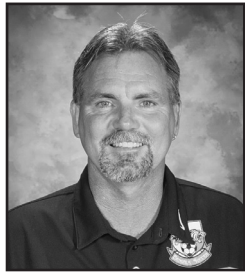


**TN AUTOMOTIVE**  
763-400-1417  
13408 HWY 65 SERVICE RD SUITE 112  
HAM LAKE MINNESOTA  
Nick@TNAutomotive.Services

# Blaine Athletics Head Coaches



**Mike Law**  
Football



**Berry Arrowsmith**  
Boys Soccer



**Scott Zachmann**  
Girls Soccer



**Rachel Karel**  
Cross Country



**Natalie Thiemes**  
Volleyball



**Brian Gronski**  
Alpine Skiing



**James Wick**  
Boys Swimming



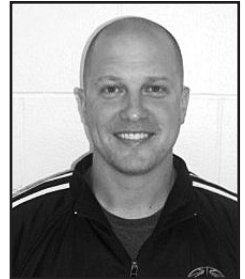
**Nick Johnson**  
Boys Swimming



**Kristen Luedtke**  
Girls Swimming



**Lance Pettis**  
Boys Basketball



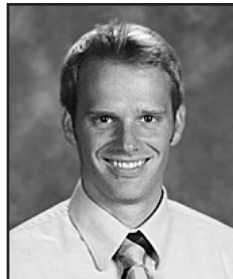
**Chris Brustuen**  
Girls Basketball



**Trevor Frischmon**  
Boys Hockey



**Steve Guider**  
Girls Hockey



**Andy Schwen**  
Nordic Skiing



**Josh Prokosch**  
Wrestling



**Ashley Howard**  
Gymnastics



**Zach Nienaber**  
Softball



**Trina Develice**  
Dance Team



**Ted Erickson**  
Baseball



**Kevin Overgaard**  
Boys Golf



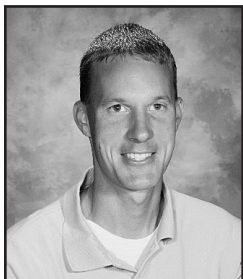
**Maribeth Suter**  
Head Girls Golf



**Ann Stalboerger**  
Girls Track



**Rob Nick**  
Boys Track



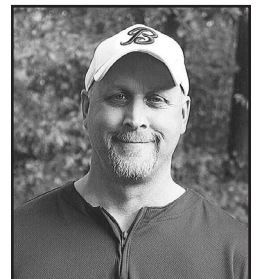
**Jeff Fedor**  
Girls Tennis



**Jody Cullen**  
Boys Tennis



**Alex Johnson**  
Boys Lacrosse



**Dennis Osbeck**  
Girls Lacrosse

**Jody Horak**



**Bengals who have represented team USA in international competition**

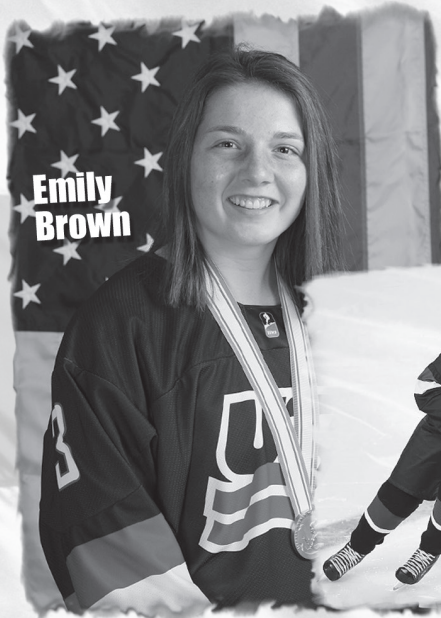
**Jody Horak**  
played on the  
2003 U22  
National Team

**Tiffany Hagge**



**Tiffany Hagge** played  
in the 2007 World  
Championships

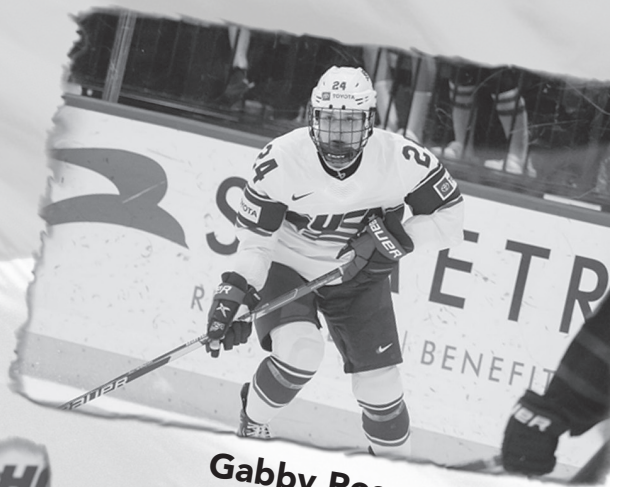
**Emily Brown**



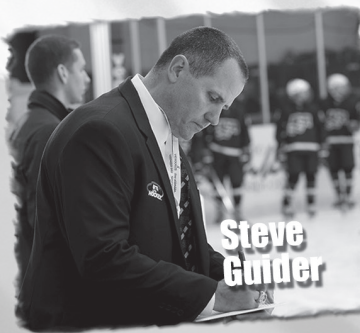
**Emily Brown**  
was a World  
Champion Gold  
Medalist on the  
2016 USA U18  
National Team



**Gabby Rosenthal**  
Played on the 2022 USA  
Rivalry Series Team



**Steve Guider**



**Steve Guider**  
2013 Assistant Coach  
U18 World Silver medalist



# RAISING THE STANDARD OF EXCELLENCE

**STEVE BETHEL**  
OWNER

LICENSED AND INSURED  
LICENSE #BC637516

steve@craftsmancs.com

**763-443-1694**

**www.craftsmancs.com**

# GOOD LUCK GIRLS!

"We Treat Your Vehicle  
Better Than Our Own"

## NORTH COUNTRY

TIRE SERVICE, LLC

Best Prices on Most Major Tire Brands,  
Alignments, Brakes, Full Service Repair  
ASE Mechanics and Certified Sales Staff

11290 Highway 65 NE, Blaine, MN 55434

[www.NorthCountryTire.com](http://www.NorthCountryTire.com)

Call or e-mail for an appointment

# 763-757-3130

Email: [nct@NorthCountryTire.comcastbiz.net](mailto:nct@NorthCountryTire.comcastbiz.net)

# HAVE A GREAT 2022-23 SEASON BENGALS!!

**DAVE'S**  
SPORT SHOP



## **P** Park Dental

# ROOTED IN THE COMMUNITY

**Good luck this season, Bengals!**

**Convenient morning and  
evening hours**

Easy online scheduling

We have two locations in your area:

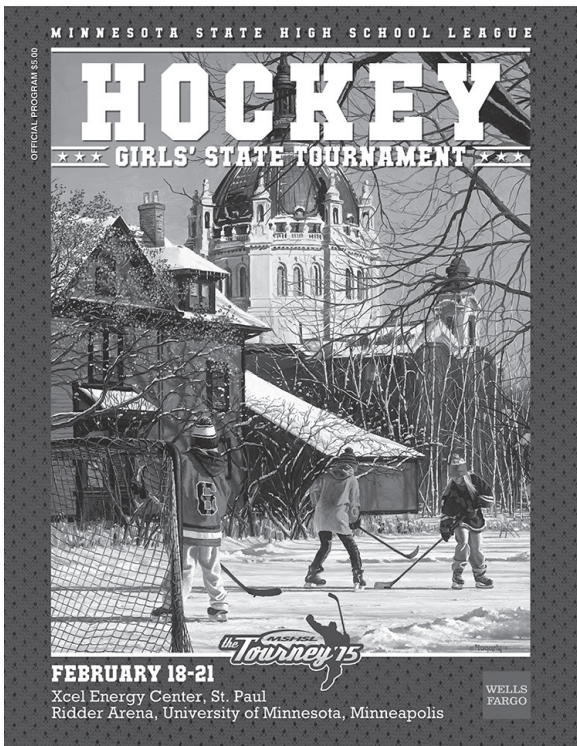
 **Blaine**  
763-755-1330

 **Blaine East**  
763-201-1502

[parkdental.com](http://parkdental.com)

Trusted dentist for the 

# Bengals in the State Tourney 22 23



**2014-2015**

**Blaine 1 - Lakeville South 3  
State Quarterfinals**

**Blaine 3 - Andover 0  
State Consolation Semifinals**

**Blaine 4 - Eastview 3 ot  
State Consolation**

**STATE CONSOLATION CHAMPIONS**

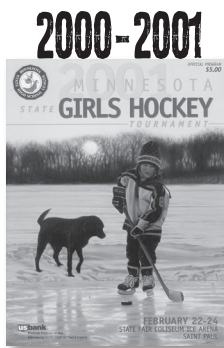
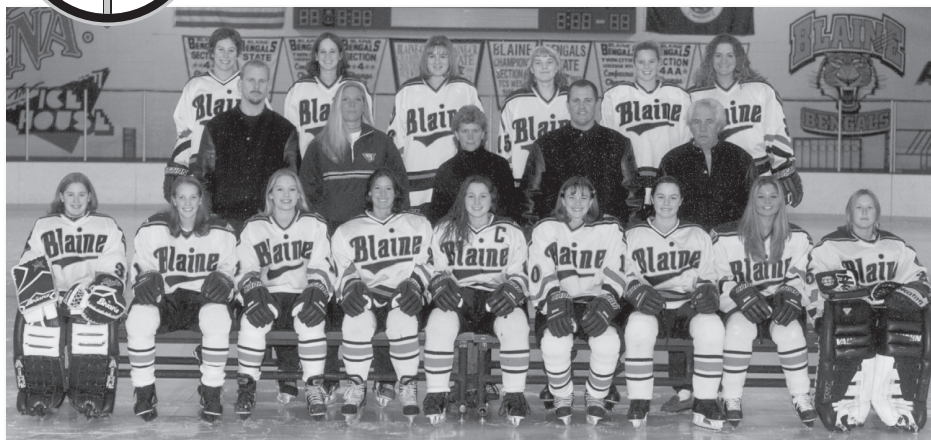


Row 1 (L to R): Manager Amber Penner, Gina Rosvold, DeAnna LeMire, Morgan Cin, Makayla Tilton, Annie McKenzie, Alisa Wolens, Emily Brown, Abby Houghtling, Kate Wehr, Ashley Osbeck, Laura Fitzsimons, Kendra Kukowski, McKenzie Krieger, Courtney Moser, Annie Steinmetz, Steve Guider

Row 2 (L to R): Tim Stickney, Chuck McQuillan, Miranda Zepeda, Sophie Kendall, Emma Schweiger, Claire Hallaway, Rachel Lentner, Maddie Stoner, Paige Beebe, Sophia Sabby, Kirstie Ziegler, Megan Treece, Gabby Rosenthal, Sidney Bailey, Ramsey Parent, Tim Morris

Row 3 (L to R): Abby Murphy, Megan McKenzie, Megan Murray, Sam Auman, Sarah Ganley, Kenzie Wylie, Ellen Postudensek, Jennifer Smith, Miranda Miller, Tayah Lindsay, Peter McKenzie

# Bengals in the State Tourney



**2000-2001**  
 Blaine 3 - Blake 1  
 State Quarterfinals  
 Blaine 1 - South St. Paul 0  
 State Semifinals  
 Blaine 1  
 Bloomington Jefferson 2  
 State Championship

## STATE RUNNER-UP

Row 1: Kim Hanlon, Krista Johnson, Andrea Jensrud, Tiffany Hagge, Christa Hubert, Kristina Bunker, Stefanie Ubl, Ashley Dreis, Jody Horak  
 Row 2: Asst. Coach Mark Ziegler, Asst. Coach Gina Houser, Head Coach Marci Bydlon, Asst. Coach Steve Guider, Asst. Coach Mike Guider  
 Row 3: Jennifer Reed, Erin O'Neil, Jenna Daleiden, Samantha Nixon, Becca Perez, Kristina Breuhl

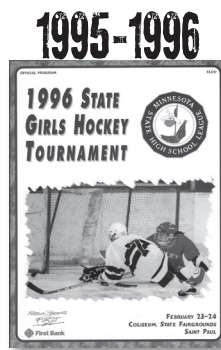


**1996-1997**  
 Blaine 9 - Owatonna 0  
 State Quarterfinals  
 Hibbing 4 - Blaine 2  
 State Semifinals  
 Blaine 3 - Mounds View 1  
 State 3rd Place



## STATE 3RD PLACE

Row 1: Lindsey Kuehn, Shannon Adams, Amanda Brandt  
 Row 2: Head Coach Marci Bydlon, Kim Oseth, Mikki Hubert, Bethany Howard, Katie Beauduy, Laura Tryba, Rachel Nelson, Chrissy Ross  
 Row 3: Asst. Coach Gina Houser, Jenny Penner, Sara Griffith, Jenny McCall, Katie Dierkhising, Kim Conradi, Jessica Stewart-Calvert, Asst. Coach Steve Guider, Jessica Reed



**1995-1996**  
 Roseville 6 - Blaine 2  
 State Semifinals  
 Blaine 3 - Blake 0  
 3rd Place Game

## STATE 3RD PLACE

Row 1: Katie Beauduy  
 Row 2: Lindsay Jerke, Erica Johnson, Jodi Stepaniak, Amanda Brandt, Lindsay Bertie, Karen Stauffer, Kim Oseth, Mikki Hubert  
 Row 3: Head Coach Marci Bydlon, Manager Jessica Reed, Emily Miller, Laura Tryba, Katie Dierkhising, Kelly Pajak, Jenny Penner, Asst. Coach Jim Scheid  
 Row 4: Asst. Coach Steve Guider, Selena Olson, Laura Granroth, Lindsey Kuehn, Shannon Adams, Bethany Howard

*Team and individual photos by*

# *David Bank Studios*



*Visit our website for current specials!*

[DavidBankStudios.com](http://DavidBankStudios.com)

1290 Osborne Rd. NE

Fridley MN 55432

Affordable | Community | Athletics



Whether you're here for a Game, Tournament, or enjoying a meal in the restaurant we want to make sure all of your needs are taken care of!

*Good Luck!*



# HEALTH EVOLUTION

- Fueling athletes with balanced nutrition and hydration
- Healthy fast food for busy moms and dads with protein shakes and energizing teas
- Weight loss and muscle gain programs available
- 200-250 calories, 24 grams of protein, low in sugar and balanced carbohydrates



**GO BENGALS!**

**ASK ABOUT GAME DAY SHAKES  
AND TEAS FOR ATHLETES**

## **LeAnn Beebe**

Herbalife Independent Distributor

612-245-1577

CoachLeAnn@gmail.com

www.healthevolutionmn.com



**12410 ABERDEEN ST. NE #200 • BLAINE, MN 55449**

# BLAINE

EVENT VENUE  
WE CREATE. YOU CELEBRATE.

www.blaineeventvenue.com  
info@blaineeventvenue.com  
**651-350-2900**

  @blaineeventvenue

LOCALLY OWNED AND OPERATED

## WEDDINGS



Full Package



Partial Day Package



On the Day +  
Hourly Packages

## CORPORATE EVENTS

All event and party packages are booked by either daily or hourly rates



Conferences



Corporate Parties



Employee Fun Days

## PRIVATE PARTIES

All event and party packages are booked by either daily or hourly rates



Family Events



Charity Events



Private Events



TWIN CITIES  
ORTHOPEDICS

# URGENT CARE 8-8 DAILY



**James P.**  
BMX Racer | St. Francis, MN



OFFICIAL SPORTS MEDICINE PROVIDER  
OF THE BLAINE BENGALS



[TCOmn.com](http://TCOmn.com)