



The Inclusive Approach to Employment.

# VIDEO: Who We Are



# Who We Are

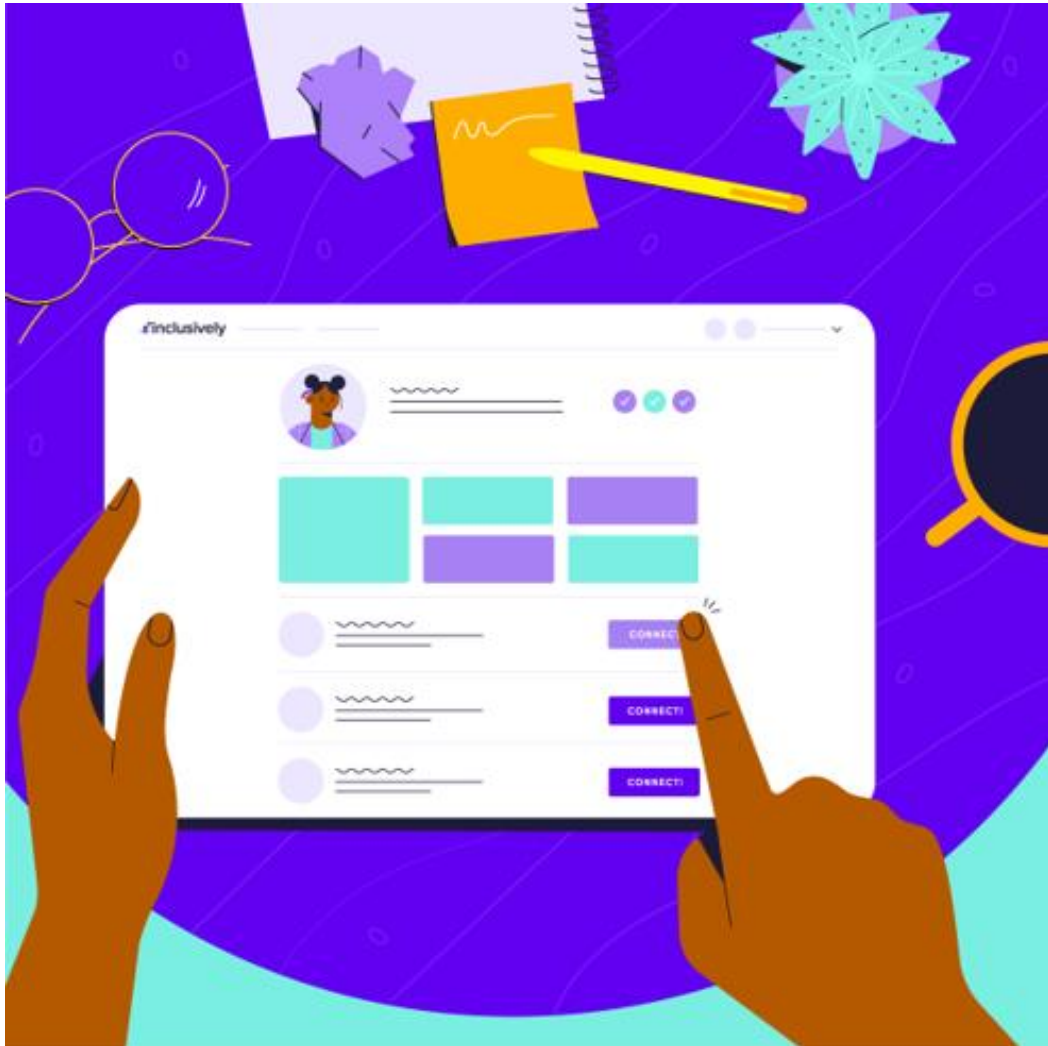
Inclusively is a **professional network and employment platform** transforming the way candidates with disabilities and employers connect.

Our network is made up of **inclusion champions** within companies seeking diverse talent, people with disabilities seeking career opportunities that fit their unique profiles, and professionals from other organizations supporting their career development.

By providing opportunities at companies that **understand the importance of workplace accommodations**, we encourage candidates to feel comfortable disclosing their disabilities and optimizing for success in the new role.



# What We Do



## **Employment Platform**

Make it easier and more effective for companies' Talent Acquisition teams to find the right diverse talent for the right roles.

## **Innovative Job Matching Technology**

Inclusively goes beyond a candidate's background, matching not only their experience and skills but the accommodations needed to succeed in the role.

## **Digital Training**

Virtual trainings that provide information and resources for teams to make workplaces more accessible and inclusive.

# Our Success Enablers

Workplace accommodations, or as we call them, **Success Enablers**, are designed to help candidates who benefit from accommodations under the [Americans with Disabilities Act \(ADA\)](#), excel at work and in interviews.



# Some of Our Premier Employers

Through our Premier Employers partnerships, candidates are matched with inclusive employers who are making significant investments in creating more educated, accommodating, & accessible workplaces.



C Talent



CAI



Charles Schwab



Microsoft



Salesforce



Sheryl Sandberg & Dave Goldberg Family Foundation



Dell



Epi Breads



Ernst & Young LLP



Smith Built Metals



Technology Transformation Services



The Martin Agency

# Success Stories



“ Working with the Inclusively team helped me to get interaction and opportunities with different employers. Join them, learn and increase your networking. ”



Vishal B. | Full Stack Engineer



“ Inclusively is very encouraging, making sure to point things out, during the search, that are really worth the candidate being proud of. They help people with disabilities find an opportunity that is both inclusive & accessible, which is a BIG deal. ”



Sara J. | Freelance Graphic & Digital Designer

# Candidate Placement Examples



Dell's annual internship program hires candidates once a year. Out of 35 open positions, **Inclusively filled 5 of them within a month** of working with Dell



During E&Y's recruitment Superweek in March 2021, **7 Inclusively candidates were selected**, where 90% of the candidates historically move into full-time roles

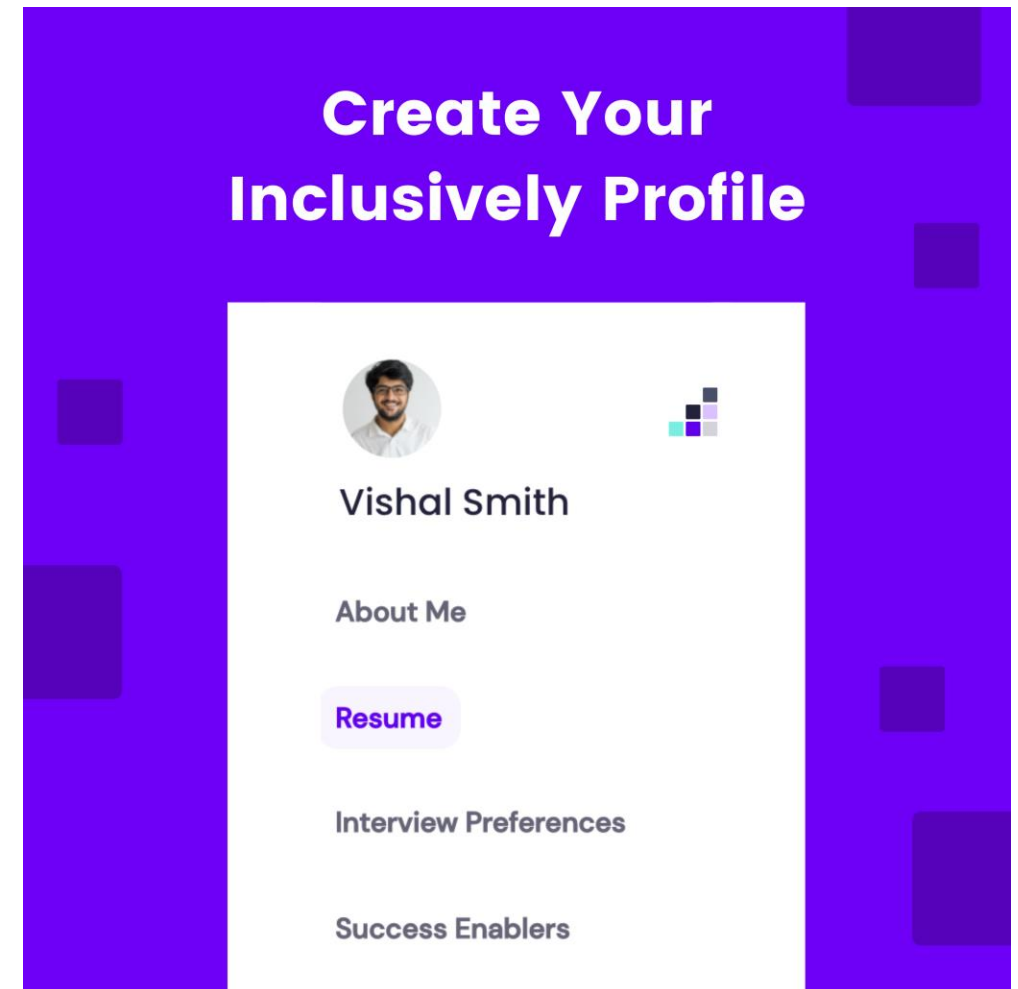


**3 Inclusively candidates** were placed at CAI within the first month of our formal partnership



# How Inclusively Works

- ✓ Create a free profile with experience, skills, education, industry, Success Enablers & more
- ✓ Search, get matched, and connect to jobs that fit your profile
- ✓ Interested employers will contact you to follow up & learn more
- ✓ Keep your profile updated to stay connected and be notified as new jobs are posted



# Learn More:

**inclusively.com**

**contactus@inclusively.com**

**@workinclusively**

## NWBA registration link:

**<https://inclusively.com/partnerships/nwba>**