

# Pitcher Signals

One Sign Sequence – Used to Call Pitch TYPE

## Standard Pitch calls

1 Finger – Fastball

2 Fingers – Change Up

3-4 Fingers – Only used if Pitcher has additional pitches

## Specialty Calls

5 Fingers – Head Shake

Closed Fist - Pitch out

Coaches will typically  
send sign to catcher  
from dugout



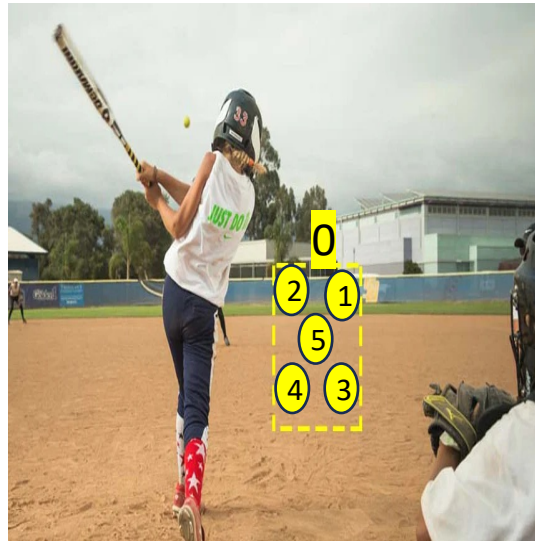
# Pitcher Signals

Second Sign Sequence – Used to Call Pitch LOCATION

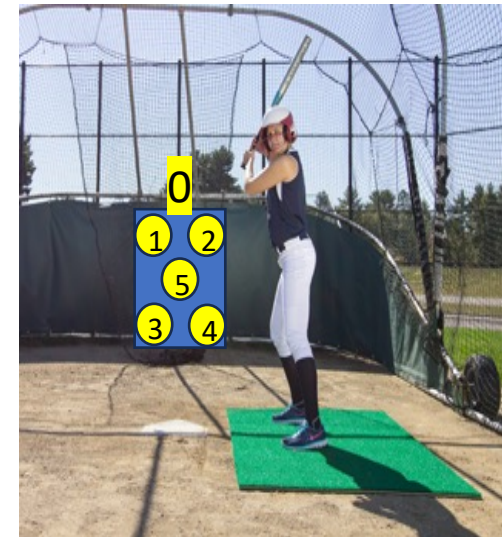
Coaches will typically send sign to catcher from dugout



Catcher's View



Pitcher's View



The spots represent the 4 corners of the plate, high middle, and the “dead red” zone. We will use the following chart when calling placement of pitches as a baseline.

HINT: ODD numbers are outside pitches, EVEN numbers are inside pitches.

# Pitcher Signals - Sequence Examples

---

Fist Sign: Typically 1 (doesn't mean anything)  
5 – head shake

Second Sign: 1-4 will indicate pitch type (fastball, change,  
screwball, other)

Third Sign: 0-5 will indicate pitch location

## Examples:

Sign: 1-2-3 Change up, low and outside

Sign: 5-1-0 Head Shake, Fastball, high middle

Sign: 1-1-5 Fastball, down the middle

Sign: closed fist Pitchout - ALWAYS FASTBALL OUTSIDE  
and HIGH

