

# LBYSO REC GAME DAY REFERENCE & RULES SPRING 2022



## STORAGE, FIELD SETUP, GENERAL INFO – ALL AGE GROUPS

### STORAGE SHED

Heartwell shed storage (unlocked by 8am Saturdays; locked 30 minutes after last game)  
Help keep the shed organized. Leave it looking better than you found it.

### TEAM TOUCHLINE (SIDELINE)

For all fields: Home team as shown on schedule gets first choice.

### SET UP & TEAR DOWN RESPONSIBILITIES

- Coaches should not do all the work themselves
- Get parents to handle set and tear down
- Provide them guidance as needed but your focus is the team.
- For morning setup they should arrive 30-40 minutes before the first game of the day.
- For clean up after last game, put gear away and place items in the proper place.

**Set up** (first game on a field, 9:00am, 9:15 and 9:30 start times; possibly later for U14)

- Home team sets up both goals (and corner flags for U10 and U14)
- Away team lines the field. Put field liner and empty cans in the shed.

**Tear down** (last game on a field, check the schedule if not sure)

- Both teams replace one goal (and 2 flags for U10 and U14)
- U6 and U8 goals get folded IN HALF ONLY

**DO NOT USE EXCESSIVE FORCE WHEN FOLDING GOALS**

**HAVE YOUR TEAM AND PARENTS CLEAN UP BEFORE THEY LEAVE**

**LBYSO COACH INFO AT <https://www.lbyso.org/coachescorner>**

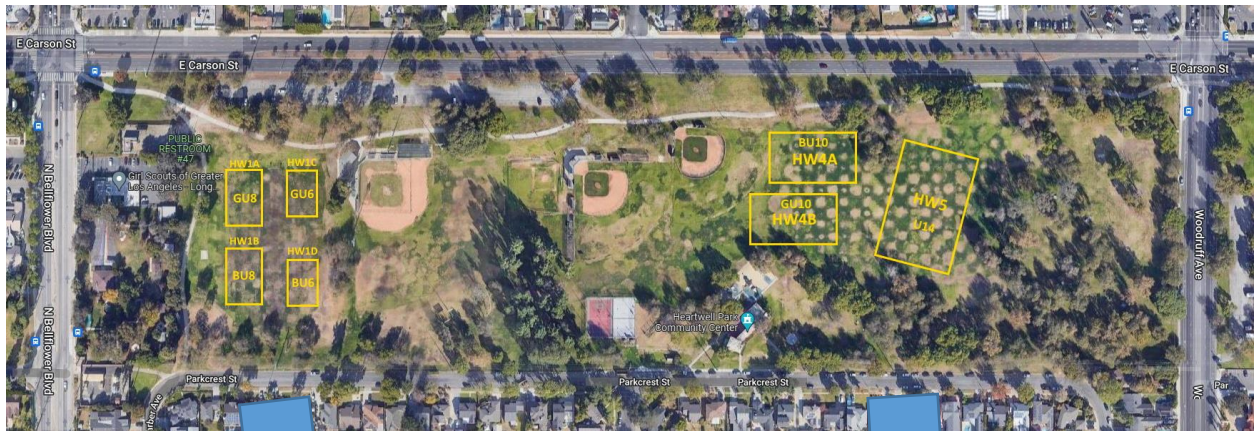
### LEAGUE CONTACTS

Fields	Michael Johnson	<a href="mailto:mkendrickj@yahoo.com">mkendrickj@yahoo.com</a>
Uniforms and Equipment	Lindsay Dick	<a href="mailto:teamparent@lbyso.org">teamparent@lbyso.org</a>
U6-U10 Commissioner	Cecilia Deblois	<a href="mailto:ceciliadeblois@att.net">ceciliadeblois@att.net</a>
Risk Management & Safety	Claudia Murray	<a href="mailto:riskmanagement@lbyso.org">riskmanagement@lbyso.org</a>
General Info/Registration	Katie Neidermire	<a href="mailto:info@lbyso.org">info@lbyso.org</a>

# LBYSO REC GAME DAY REFERENCE & RULES SPRING 2022



## FIELD MAP



# LBYSO REC GAME DAY REFERENCE & RULES SPRING 2022



## U6

### **Playing format**

Boys on field 1D at HW1 southeast corner

Girls on field 1C at HW1 northeast corner

4 v 4, no goalkeeper

No goalkeeping. Players can play defensively and block shots but not stand in front of the net

4 x 8 minute periods, water break after 1 and 3, 5 minute halftime

No keeping score

Coaches allowed on field to direct play but stand clear as much as possible

No paid referees, both coaches or a parent from each team act as "referees"

Strict officiating not required but teach the game and rules as best you can

Free substitution after any dead ball

### **Set Up (first game only, each field)**

Home team sets up both goals.

Away team lines the field (Line the field before first game **EVERY** week)

### **Goals**

Stored in the Heartwell shed at northwest corner of Field 1

No corner flags

### **Field Lining (first game, by away team)**

Field must be lined **EVERY** week. Even if it looks "okay", line it.

Allow at least 30 minutes for field lining.

Shake new paint cans before spraying.

Lines should be about 2" wide. If the lines are spraying narrow, rotate the spray can 90 degrees.

Save empty cans in the box upside down. Return empties and the liner to the shed when done.

### **U6-specific Rules**

In general, FIFA Laws of the Game apply but very loosely at this age.

**Throw-ins/Kick-ins** - Work with players to make legal throw-ins. Give them a second (or third) try to get it right. Then switch throw-in to other team. Kick-ins can be used if desired.

**Goal Kicks** – For U6, all kicks over the goal line are always a goal kick. Honor system, but don't encourage defending kids to kick it out to gain possession.

**Out of Bounds** - Ball out of play calls do not have to be strict "to the inch" but limit how far and how often you allow the ball to go out of bounds during a game. It's part of the learning process but you also want the game to flow and limit interruptions. *Both coaches should discuss this before the game so everyone is on the same page and both teams are held to the same standards/rules.*

**Build Out Line (mid-field line for U6)** - There is no separate 'Build Out Line' on the field. Prior to goal kicks, the defending team retreats behind the midfield line. Defending team does not attack until the ball is kicked into play.

### **No Heading**

# LBYSO REC GAME DAY REFERENCE & RULES SPRING 2022



## U8

### **Playing format**

Boys on field 1B at HW1 southwest corner

Girls on field 1A at HW1 northwest corner

5 v 5, no goalkeeper

No goalkeeping. Players can play defensively and block shots but not stand in front of the net

4 x 10 minute periods, water break after 1 and 3, 5 minute halftime

Coaches should remain off the field or near their own touchline as much as possible

No paid referees, both coaches or a parent from each team act as referee, use a whistle to stop play

Call obvious fouls, briefly explain to the player why any fouls are called

Free substitution after any dead ball

### **Set Up (first game only, each field)**

Home team sets up both goals.

Away team lines the field (Line the field before first game **EVERY** week)

### **Goals**

Stored in the Heartwell shed

No corner flags

### **Field Lining (first game, by away team)**

Field must be lined **EVERY** week. Even if it looks "okay", line it.

Allow at least 30 minutes for field lining.

Shake new paint cans before spraying.

Lines should be about 2" wide. If the lines are spraying narrow, rotate the spray can 90 degrees.

Save empty cans in the box upside down. Return empties and the liner to the shed when done.

### **U8-specific Rules**

In general, FIFA Laws of the Game apply. Modifications provide for transition from U6 and to U10.

**Throw-ins** – All balls that go over the touch line will be a throw in. No kick ins. Give the players a second try if needed. Then switch throw-in to other team.

**Goal Kicks** - A ball that goes out over the goal line and was last touched by the offensive team will result in a goal kick for the defensive team. A ball that goes out of bounds at the goal line and was last touched by the defensive team will result in a corner kick for the attacking team.

**Out of Bounds** - Ball out of play calls should be fairly strict. Allow some gray area but if it's obviously out, call it as such.

**Build Out Line** - There is a blue 'Build Out Line' on the field. For goal kicks, the defending retreats behind the Build Out Line. Defending team does not attack until the ball is kicked into play.

### **No Heading**



# LBYSO REC GAME DAY REFERENCE & RULES SPRING 2022



## U10

### **Playing format**

Boys on field 4A, Girls on field 4B

7 v 7 including goalkeeper, (8v8 allowed when both rosters have 11 players)

2 x 25 minute halves, water break at first stoppage after the 12th minute of each half, if desired

5-10 minute halftime

Coaches off the field and between the Build Out Lines. No goalkeeping coach.

One paid referee scheduled for each game. **Do NOT pay referees. We are invoiced for U10 refs.**

Free substitution after any dead ball

PREPARE A GAME CARD FOR THE REFEREE: [LBYSO Game Card](#)

### **Set up**

Home team sets up both goals and flags (nets are in black duffle bags in the shed)

Away team lines the field (Line the field before first game **EVERY** week)

### **Goals**

Goals are locked to fence at ball hockey court near the community center

Move goals into place and attach nets

### **Field Lining (first game, by away team)**

Field must be lined **EVERY** week. Even if it looks "okay", line it.

Allow at least 30 minutes for field lining.

Lines should be about 2" wide. If the lines spray narrow, rotate the can 90 degrees.

Shake new paint cans before spraying.

Save empty cans in the box upside down. Return empties and the liner to the shed when done.

### **U10-specific Rules**

In general, FIFA Laws of the Game apply.

**NEW** – Goal kicks do NOT have to leave the "12 yard box" before a teammate can play the ball.

**Build Out Line** - There is a blue 'Build Out Line'. For goal kicks, the defending retreats behind the Build Out Line. Defending team does not attack until the ball is kicked into play.

- When the goalkeeper has the ball in their hands during play from the opponent (or before a goal kick), the opposing team moves behind the build out line until the ball is in play.
- The goalkeeper can kick, throw or roll the ball into play (punts/drop kicks are not allowed)
- After the ball is put into play by the goalkeeper, the opposing team can attack and play resumes as normal ("put into play" = kicked, thrown or rolled)
- The goalkeeper can put the ball into play sooner but he or she does so accepting the positioning of the opponents and the consequences of how play resumes.

**No Heading allowed**

**ENTER YOUR SCORE IN SPORTSENGINE APP AFTER EACH GAME**

[Score entry instructions](#)

UPDATED March 8 2022

# LBYSO REC GAME DAY REFERENCE & RULES SPRING 2022



## U12

### **Playing format**

Boys and Girls at Molina Park (away games at OJSC fields)

9 v 9 including goalkeeper

2 x 30 minute halves, water break at first stoppage after the 15th minute of each half, if desired

5-10 minute halftime

No goalkeeping coach

1-3 person paid officiating crew scheduled for each game.

**Do NOT pay referees. We are invoiced for U12 refs.**

OJSC schedules and pays referees for games in Orange.

Free substitution after any dead ball

PREPARE A GAME CARD FOR THE REFEREE

LBYSO Game Card at LBYSO Coaches Corner or:

[https://cdn2.sportngin.com/attachments/document/87ff-1668175/LBYSO\\_Lineup\\_Card\\_rev\\_20190909.pdf](https://cdn2.sportngin.com/attachments/document/87ff-1668175/LBYSO_Lineup_Card_rev_20190909.pdf)

### **Set up**

Molina requires no setup other than positioning goals

Contact Fields Director Michael Johnson for field access instructions.

### **Field Lining**

Molina requires no field lining

## **U12-specific Rules**

Standard FIFA Laws of the Game apply.

**NEW** – Goal kicks do NOT have to leave the “18 yard box” before a teammate can play the ball.

### **No Heading**

# LBYSO REC GAME DAY REFERENCE & RULES SPRING 2022



## U14 & 16

### **Playing format**

Boys and Girls at Heartwell Field 5  
11 v 11 including goalkeeper  
2 x 35 minute halves for U14, 2 x 40 minute halves for U16  
5-10 minute halftime  
No goalkeeping coach  
3 person officiating crew scheduled for each home game.  
Away game refs scheduled by home team.  
Home team pays the full ref fee  
Free substitution after any dead ball

COACHES ALWAYS HAVE A GAME CARD & PLAYER CARDS FOR THE REFEREE

JUSA Game Card at

[https://cdn4.sportngin.com/attachments/document/0052/8087/JUSA\\_Game\\_Card.pdf](https://cdn4.sportngin.com/attachments/document/0052/8087/JUSA_Game_Card.pdf)

### **Goals**

Goals might need positioning but should always be on the field. 11v11 goal is 24 feet wide.

### **Field Lining (LBYSO Heartwell home games, first game only)**

Field must be lined **EVERY** week. Even if it looks "okay", line it.

Shake new paint cans before spraying.

Allow at least 30 minutes for field lining.

Lines should be about 2" wide. If the lines are spraying narrow, rotate the spray can 90 degrees.

Save empty cans in the box upside down. Return empties and the liner to the shed when done.

### **U14 & U16-specific Rules**

Standard FIFA Laws of the Game apply.

**NEW** – Goal kicks do NOT have to leave the "18 yard box" before a teammate can play the ball.

### **Heading allowed**

### **HOME TEAM PAYS FULL REF FEE IN CASH.**

[Ref fee schedule](#) (11v11 – 3 officials \$120 (\$48/\$36/\$36), 2 officials \$96, one ref \$75)

Get ref fee check for the season from Treasurer Howell Martinez

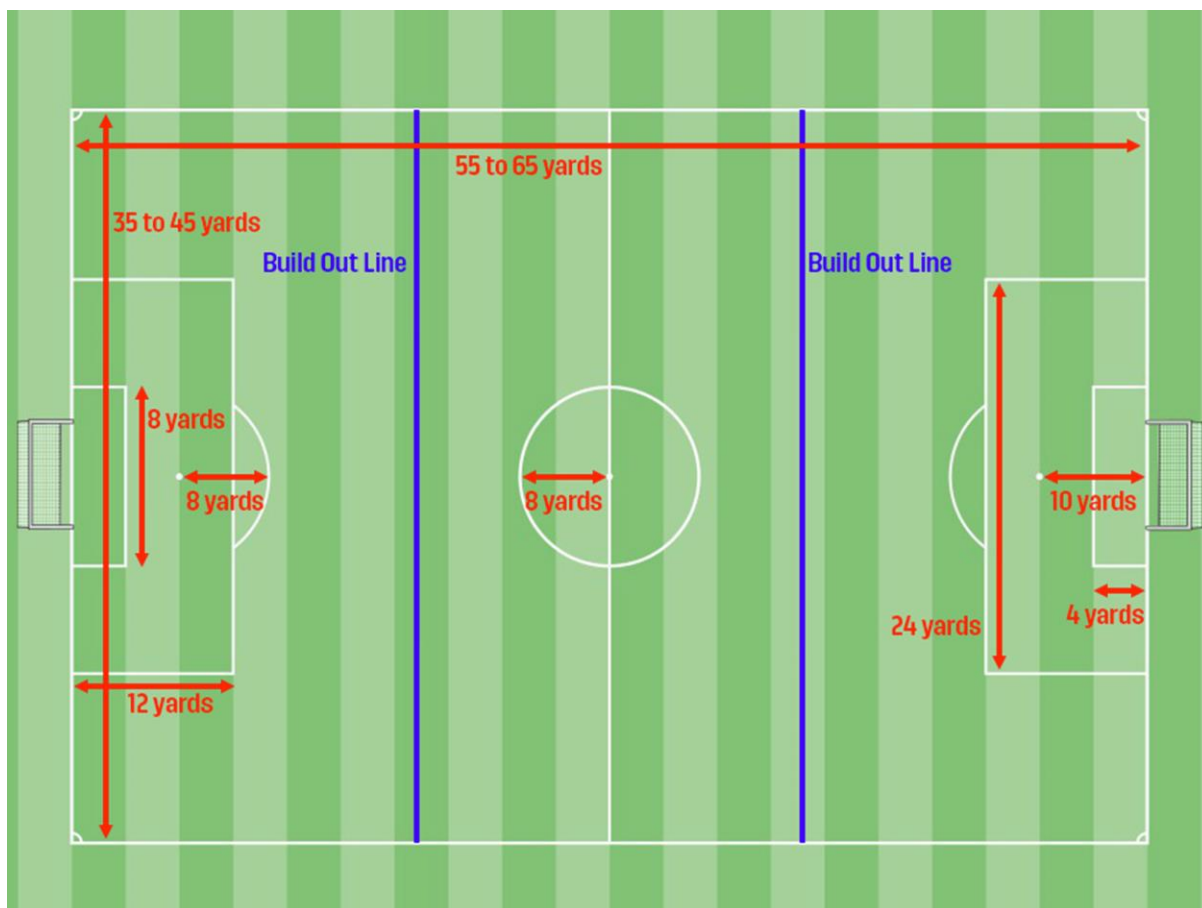
### **Additional rules for JUSA Spring League**

[JUSA Spring Rules](#)

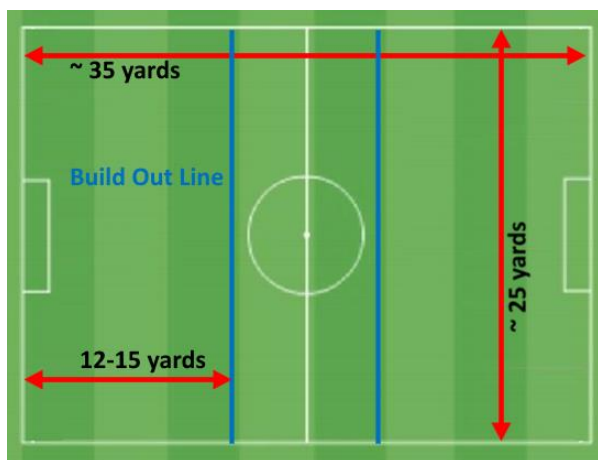
# LBYSO REC GAME DAY REFERENCE & RULES SPRING 2022



U10 7v7 Field Layout



U8 Field Layout



U6 Field Layout

