

WATCH DAY

SATURDAY, OCTOBER 3 | 7:30PM

PRESENTED BY



FIFTH THIRD BANK

CORBEN BONE



VS



SIGNATURE HEALTHCARE

JOIN OUR TEAM

NURSES | C.N.A'S
NURSE PRACTITIONERS
DIETARY STAFF

COMPETITIVE WAGES / FLEXIBLE SCHEDULES
OUTSTANDING BENEFITS / GROWTH OPPORTUNITIES

8 SKILLED NURSING CENTERS
SERVING THE LOUISVILLE MARKET

Apply On-Line at LTCRevolution.com
TEXT "NEWJOB" TO 97211



IN THIS ISSUE

GAME PREVIEW 04

Williams, LouCity's 'engine' finds scoring touch in a career year

TEAM ROSTERS 05

A look at team rosters for Louisville City FC and Sporting Kansas City II

LYNN FAMILY STADIUM 06

Key details about LouCity's new home

EASTERN CONFERENCE STANDINGS 07

Where LouCity currently stands in the Eastern Conference

JOHN HACKWORTH 08

Meet Louisville City FC's head coach

LOUCITY STAFF 10-11

Louisville City's Coaches, Front Office, Technical Staff, & Medical Staff

MEET THE TEAM 13-17

Player profiles for every athlete

SCHEDULE 20

A full rundown of our 2020 reschedule updated with wins and losses

YOUTH CLUB PARTNERS 25

A listing of Louisville City's youth soccer club partners

COMMUNITY AND CHAMBER PARTNERS 28

A listing of Louisville City's business and civic partners



WILLIAMS, LOUCITY'S 'ENGINE,' FINDS SCORING TOUCH IN A CAREER YEAR

By Jonathan Lintner

Devon “Speedy” Williams likens his role at Louisville City FC to an engine propelling his side. In that respect, the midfielder is firing on all cylinders as LouCity’s abbreviated season concludes.

A Jamaican international in his fourth year wearing purple, Williams ranks third in the USL Championship in passes attempted at 904. He’s also sitting on a career-high four goals as LouCity’s set to welcome Sporting KC II for a 7:30 p.m. Saturday regular-season finale at at Lynn Family Stadium.

“It’s fantastic to see him producing and getting a little of the limelight,” said LouCity coach John Hackworth. “He does so much work on the defensive side and being what we call our pivot — building out of the back and providing that next pass into our attack.

“For him to find the back of the net as frequently as he has just shows the kind of quality he has but also players taking on different roles and responsibilities within our team.”

Before the 2020 campaign, Williams, who first played professionally for New York Red Bulls II, had scored one goal apiece per season operating out of the central midfield — situated in front of the defense, but behind the lead attackers.

So what’s changed this year?

“It’s nothing crazy,” said Williams, who insists he’s not hunting goals. “I’ve just been in more goal-scoring positions — more than in previous seasons.”

Hackworth joked that the initiative may come from a goal-scoring clause in the 28-year-old’s contract.

“Now he’s trying to poach goals right and left,” the coach said with a smile.

Williams opened Lynn Family Stadium with the new facility’s first goal on July 12 as the USL restarted play amid the COVID-19 pandemic.

He scored twice against the Indy Eleven in key meetings between the rivals, then headed in a game winner last Saturday at Saint Louis FC.

“We have a lot of fun with the fact that he may have, or may not have, stolen that goal from Oscar (Jimenez) on the weekend,” Hackworth said, with Jimenez’s corner kick looking to be curling in anyway. Williams’ final touch, however, directed the ball into the back of the net that much faster to make the difference in a 1-0 game.

Williams has won USL titles with the Red Bulls II (2016) and LouCity (2017, 2018). Despite that, defender Alexis Souahy sees his teammate’s confidence at an all-time high as LouCity rides a 10-game unbeaten streak into the weekend.

“I think he’s been having a great year not just by scoring goals but by making defensive plays, being in the attack — just his ability in general,” Souahy said. “He’s been playing very well for us.

“...The goals he’s been scoring are just in addition to what he’s been doing for us. Everyone’s happy for him.”

Williams, who leads LouCity with 1,332 minutes played, is compelling 86% of his passes. Nearly 84% of his passes in the opponent’s half of the field — often moving forward — have been accurate.

That includes a key sequence Sept. 12 against Saint Louis FC when he collected the rebound off a blocked shot, played through and found forward Antoine Hoppenot behind the Saint Louis FC defense. Hoppenot drilled the first goal of that game, also his first of the season, to add an assist to Williams’ stat line.

“I’m just in the right spot at the right time most of the time,” Williams said. “My job is just to organize the midfield — the defense and the attack. I’m like the engine. They always call midfielders the engine so the car can go. That’s my job — to make the team tick.”

TEAM ROSTERS



1	CHRIS HUBBARD	GK	31	BROOKS THOMPSON	GK
3	ALEXIS SOUAHY	D	32	CHRISTIAN DUKE	MF
4	SEAN TOTSCH	D	33	DANNY BARBIR	D
5	JIMMY OCKFORD	D	34	DOMINIK RESETAR	F
6	WES CHARPIE	D	35	DUVAL WAPIWO	MF
8	AKIL WATTS	D	39	PETAR CUIC	D
9	LUKE SPENCER	F	40	DILLON SERNA	D
10	BRIAN OWNBY	F	42	REMI PRIEUR	GK
11	NIALL MCCABE	MF	43	BAILEY SPARKS	MF
13	CORBEN BONE	MF	44	CAMDEN RILEY	D
14	ABDOU THIAM	F	46	JAKE DAVIS	MF
15	PAT MCMAHON	D	48	KAVEH RAD	D
17	CAMERON LANCASTER	F	49	WILL LITTLE	MF
19	OSCAR JIMENEZ	D	55	GAVIN KRENECKI	GK
22	GEORGE DAVIS IV	F	65	ISAIAH LEFLORE	D
27	NAPO MATSOSO	MF	71	MASON LEETH	D
29	ANTOINE HOPPENOT	MF	72	RYAN FESSLER	MF
36	PAOLO DELPICCOLO	MF	77	ENOCH MUSHAGALUSA	F
38	ARDA BULUT	F	80	FREDINHO MOMPREMIER	F
39	BEN LUNDT	GK	84	JAHON RAD	MF
42	JONATHAN GOMEZ	D	88	SAM RABEN	D
45	DAMIR BEGANOVIC	MF	96	WILSON HARRIS	F
61	ELIJAH WYNDER	MF	97	JOSH CHONG	F
77	JASON JOHNSON	F	99	JARET TOWNSEND	MF
80	DEVON "SPEEDY" WILLIAMS	MF			
91	MUAMER UGARAK	M			

HEAD COACH | **JOHN HACKWORTH**

HEAD COACH | **PAULO NAGAMURA**



/LOUISVILLECITYFC



@LOUISVILLECITYFC



@LOUCITYFC



**WE
NEED
TO BE** **UNITED** *NOW MORE THAN EVER*



Just as LouCity players work together on the field, we work together in innovative ways with businesses, individuals, nonprofits and government orgs to empower individuals and families in our community to achieve their fullest potential.

We mean it when we say that with your help, we will create a better – more equitable future for all – right here at home!

Go LouCity!

metrounitedway.org/2020



Metro United Way

WELCOME TO LYNN FAMILY STADIUM



The \$65 million stadium sits on a 10-acre parcel in the Butchertown neighborhood east of downtown. Normal capacity is 15,304, and the venue could range up to 25,000 for concerts. Unique to Lynn is a 72-foot Modelo bar in the open end, believed to be the longest of its kind in Kentucky. The jumbotron ranks second in size behind only Churchill Downs' Big Board.

The natural surface is made up of Tahoma 31 Bermuda overseeded with rye, and it can remain green year round thanks to a sub-air system that removes excessive moisture, but can also blow hot or cold air to keep grass at an ideal temperature. The lines measure 120 feet by 80, a major upgrade from the 105 by 75 pitch at LouCity's former home, Louisville Slugger Field.



LouCity has ensured its late founder's legacy lives on within the club's new home. Architect and philanthropist Wayne Estopinal, who brought pro soccer to town, is the namesake behind the closed end of Lynn Family Stadium, the standing supporter zone. Estopinal, whose firm also designed the University of Louisville's similarly named Lynn Stadium, died in a November 2018 plane crash at age 63.



EASTERN CONFERENCE GROUP STANDINGS

GROUP E	GP	W	L	D	GF	GA	GD	PTS
Y - LOUISVILLE CITY FC	15	10	3	2	26	11	15	32
INDY ELEVEN	15	7	6	2	20	17	3	23
SAINT LOUIS FC	15	6	5	4	20	20	0	22
E - SPORTING KANSAS CITY II	15	5	9	1	20	28	-8	16

GROUP F	GP	W	L	D	GF	GA	GD	PTS
X - HARTFORD ATHLETIC	15	10	3	2	29	24	5	32
X- PITTSBURGH RIVERHOUNDS SC	15	10	4	1	37	9	28	31
E - NEW YORK RED BULLS II	15	5	10	0	30	35	-5	15
E - PHILADELPHIA UNION II	15	2	10	3	19	43	-24	9
E - LOUDOUN UNITED	13	1	9	3	10	28	-18	6

GROUP G	GP	W	L	D	GF	GA	GD	PTS
BIRMINGHAM LEGION FC	15	7	4	4	28	16	12	25
CHARLOTTE INDEPENDENCE	15	7	4	4	23	22	1	25
NORTH CAROLINA FC	14	6	7	1	17	20	-3	19
E - MEMHPIS 901 FC	14	3	7	4	21	30	-9	13

GROUP H	GP	W	L	D	GF	GA	GD	PTS
Y - TAMPA BAY ROWDIES	15	10	2	3	24	9	15	33
X - CHARLESTON BATTERY	14	8	3	3	24	14	10	27
E - THE MIAMI FC	15	3	8	4	17	33	-16	13
E - ATLANTA UNITED 2	15	3	9	3	22	30	-8	12

x - Clinched playoff berth

y - Group Winner

e - Eliminated from playoff contention

JOHN HACKWORTH

Louisville City Football Club coach John Hackworth was hired in the middle of the 2018 season and promptly led the Club to its second USL Cup championship, completing the first back-to-back USL Cup titles in modern USL history.

Hackworth was hired on Aug. 2, 2018, taking over for previous coach James O'Connor who was hired with Orlando City of the MLS. After O'Connor left, Louisville City continued its season as a player-led team until Hackworth took over mid-August. Under Hackworth's direction, LouCity closed out the regular season well and then rolled through the 2018 USL playoffs with four impressive wins – outscoring the four playoff teams in their path 12-2.

“Hack came in with an impressive amount of experience and success throughout his career developing the abilities of some of our country's most exciting prospects,” Louisville City FC President Brad Estes said. “In addition, his sharp eye for talent and ability to develop elite players, we were impressed with his ability to successfully lead our Club with a remarkable humility and focus down the stretch of the 2018 season. He was able to quickly establish himself as the lead of the group that was already assembled and then add new players who complimented the team's tremendous talent.”

By the start of the 2018 Playoffs, Hackworth had molded the squad into a dominant force. Louisville City beat Indy Eleven 4-1, rolled over the Bethlehem Steel 2-0 and then crushed the New York Red Bulls 5-1 to make the USL Cup Final. Hackworth and Louisville City captured the club's second star with a 1-0 win over West Champion Phoenix Rising.

After the club conducted an international search for its next leader, Hackworth is Louisville City's second-ever head coach. The 48-year-old native of Dunedin, Fla., signed a contract spanning through the 2022 season.



“Those that know him have applauded his coaching acumen, but his character is what we are most excited about as we take Louisville City FC forward,” Estes said of Hackworth.

Prior to Louisville City, Hackworth had been in charge of the U.S. U-17 Men's National Team since 2015 and has served as an assistant to the U.S. Men's National Team since the beginning of this year. An experienced coach at the national level, Hackworth began with U.S. Soccer in 2002 when he first served as an assistant to then-U.S. U-17 Men's National Team head coach John Ellinger. Hackworth would go on to succeed Ellinger and lead the U-17's to finishes in the quarterfinals of the 2005 FIFA U-17 World Cup and Round of 16 in the 2007 FIFA U-17 World Cup. Following his time in charge of the U-17's, Hackworth also served as the inaugural Technical Director of the U.S. Soccer Development Academy.

Outside of his time with U.S. Soccer, Hackworth's experience extends to both the collegiate and professional levels of the game. He began as an assistant coach for the Wake Forest University women's and men's teams in 1993 and 1994. Hackworth was then named the head coach at the University of South Florida in 1998, where he led the Bulls to two NCAA Tournament Appearances.

In Major League Soccer, Hackworth spent five years with the Philadelphia Union, serving as the club's Youth Development Coordinator from 2009-12, and head coach from 2012-14 before returning to take charge of the U.S. U-17 Men's National Team.



CENTERED ON YOU



YOU DON'T NEED AN AGENT TO GO TO THE PROS.

THE BAPTIST HEALTH SPORTS MEDICINE TEAM IS RIGHT HERE FOR YOU. Our physicians, therapists and athletic trainers are pros at helping you get back in action and perform at your best. We provide complete sports medicine services, including sports medicine-trained physicians for both surgical and non-surgical cases, physical therapy, and athletic training services that operate out of one convenient location.

OFFICIAL SPORTS MEDICINE
PROVIDER FOR LOUISVILLE CITY FC



BAPTIST HEALTH®

LOUISVILLE

Corbin | Floyd | La Grange | Lexington | Louisville | Madisonville | Paducah | Richmond



[BaptistHealth.com](https://www.BaptistHealth.com)

DANNY CRUZ

ASSISTANT COACH | PETERSBURG, VA



10-year professional veteran Danny Cruz was John Hackworth's first coaching hire at Louisville City. Cruz has known Hackworth since Cruz was 16, playing for Hackworth as part of elite youth development teams. Cruz, a native of Petersburg, Va., was a successful pro, playing 137 career games at the MLS level. The former UNLV star was a third round draft pick in the 2009 MLS SuperDraft before playing with Houston Dynamo, D.C. United and Philadelphia Union. A fiery competitor, Cruz brings intensity, experience and tactical knowledge to bolster Hackworth's technical staff.

SCOTT BUDNICK

GOALKEEPER COACH | LOUISVILLE, KY



After John Hackworth brought in Budnick as interim goalkeeper coach in August 2018, the move went so well that he was offered the permanent position on Jan. 7, 2019. A wealth of goalkeeping knowledge, Budnick's tactical mind and steady demeanor imbues the goalkeepers union with confidence and courage. Budnick gained his knowledge through decades of experience at William and Mary, with the Richmond Kickers and Hampton Roads Hurricanes in the USISL and playing stints in English and German as well as time with three clubs in the MLS (Tampa Bay Mutiny, Miami Fusion and New England Revolution). Prior to LouCity, Budnick had a successful law while coaching locally.

TECHNICAL STAFF

STUART WRIGHT

Director of Sports Performance and
Head Athletic Trainer

BEN HULSMAN

Team Equipment Manager

MEDICAL STAFF

MARK PUCKETT, MD

Team Physician

W. MICHAEL HUGHES JR, DO

Team Physician

NICHOLAS KENNEY, MD

Team Orthopedic Surgeon

CHELSEA POOLE, MS

Assistant Athletic Trainer

FRONT OFFICE

JOHN NEACE

Chairman

JAMES O'CONNOR

Executive Vice President
of Development

SHERYL MOORE

Staff Accountant

PATRICK STEWART

Partnership
Development Director

DYLAN TERRY

Partnership
Development Manager

KRISTEN WALLACE

Academy Executive
Director

BROCK HICKAM

Junior Academy Director
for Boys and Girls

DAVE WALKOVIC

Manager of Ticket
Operations

GABE SCHENKER

Business Development
Specialist

MIREN ZUBILLAGA

Business Development
Specialist

BRITTNEY GORTER

Director of Marketing

RACHEL REGENAUER

Graphic Designer

BRAD ESTES

President

DAVENA VOWELS

Vice President of
Operations

RUSTY FAZIO

Director of Information
Technology

ERIN WILKINS

Human Resources
Manager

PAT DENBOW

Director or Partner
Strategy

EIMAN ZUBERI

Partnership Fulfillment
Coordinator

SIMON BIRD

Louisville City FC
Academy Director

THABANE SUTU

Academy Goalkeeping
Director

BRENDA MORAN

Business Development
Specialist

TERRENCE SPENCE

Business Development
Specialist

JONATHAN LINTNER

Senior Director of PR
and Communications

COLE BOLLINGER

Social Media Manager

MITCH RIED

Vice President of Sales
and Marketing

CARLY BROWN

Director of Finance

JON RYAN NEACE

Information Technology
Technician

BRAD GORDON

Partnership
Development Director

MARIO SANCHEZ

Youth Academy Director

TIM NOWAK

Racing Louisville FC
Academy Director

CRAIG JONES

Academy Director of
Soccer Operations

JARROD ROCKHOLD

Business Development
Specialist

BRAD GRAHAM

Membership
Development Specialist

EVAN FLOYD

Partnerships and
Community Relations
Executive

KYLE SPRIGGS

Creative Content
Producer

TOP 5
COLLEGE IN
KENTUCKY
(College Choice 2017, 2018)

LOUISVILLE'S DOWNTOWN UNIVERSITY

Out to change the world, starting in our own backyard.



ON CAMPUS | ONLINE | SPALDING.EDU



GK
CHRIS HUBBARD

#1

2019 SEASON: 24 GP | 24 GS - 2,220 MIN | 78 SV | 29 GA | 5 CS
LAST MATCH: vs STL | 90 MIN | 1 GA | 1 SV



D
ALEXIS SOUAHY

#3

2019 SEASON: 24 GP | 19 GS - 1,614 MIN | 1 G | 2 A | 2 YC | 1 RC
LAST MATCH: @ STL | 90 MIN | 87.7% PA | 1 YC



D
SEAN TOTSCH

#4

2019 SEASON: 33 GP | 26 GS - 2,365 MIN | 1 G | 1 A | 88 CL | 2 YC
LAST MATCH: @ STL | 90 MIN | 83.6% PA | 1 SH



D
JIMMY OCKFORD

#5

2019 SEASON: 16 GP | 16 GS - 1,422 MIN | 2 G | 66 CL | 4 YC
LAST MATCH: vs. MEM | 1 MIN (SUB)



D
WES CHARPIE

#6

2019 SEASON: 28 GP | 28 GS - 2,392 MIN | 1 A | 63 CL | 8 YC
LAST MATCH: @ STL | 45 MIN (SUB) | 84.6% PA | 1 CL



D
AKIL WATTS

#8

2019 SEASON: 4 GP | 3 GS - 236 | 8 CL
LAST MATCH: @ STL | 11 MIN (SUB) | 75% PA



F
LUKE SPENCER

#9

2019 SEASON: 35 GP | 20 GS - 2,004 MIN | 10 G | 4 A | 2 YC
LAST MATCH: @ STL | 1 MIN (SUB) | 100% PA | 1 SH



MF/F
BRIAN OWNBY

#10

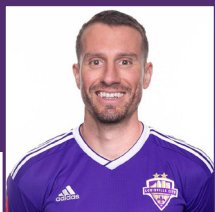
2019 SEASON: 24 GP | 20 GS - 1,849 MIN | 2 G | 5 A | 4 YC | 1 RC
LAST MATCH: @ STL | 56 MIN | 81.8% PA | 1 SH | 1 YC



MF
NIALL McCABE

#11

2019 SEASON: 33 GP | 32 GS - 2,924 MIN | 3 G | 6 A | 2 YC | 1 RC
LAST MATCH: vs SKC | 90 MIN | 81.8% PA | 1 SH | 3 KP



MF
CORBEN BONE

#13

2019 SEASON: GP 6 | GS 2 - 186 MIN
LAST MATCH: @ STL | 79 MIN | 90.5% PA | 3 KP



F
ABDOU THIAM

#14

2019 SEASON: 26 GP | 12 GS - 1,236 MIN | 3 G | 4 A | 4 YC
LAST MATCH: @ STL | 34 MIN (SUB) | 100% PA | 1 SH



D
PAT McMAHON

#15

2019 SEASON: 17 GP | 10 GS - 1,141 MIN | 1 G | 2 A | 30 CL | 4 YC
LAST MATCH: @ STL | 45 MIN | 84.6% PA



F
CAMERON LANCASTER

#17

2019 SEASON: 18 GP | 7 GS - 730 MIN | 5 G | 1 A
LAST MATCH: @ STL | 89 MIN | 76.9% PA | 3 SH



D
OSCAR JIMENEZ

#19

2019 SEASON: 37 GP | 37 GS - 3,341 MIN | 1 G | 7 A | 59 CL | 4 YC
LAST MATCH: @ STL | 90 MIN | 83% PA | 1 SH | 1 KP | 1 A



MF
GEORGE DAVIS IV

#22

2019 SEASON: 32 GP | 12 GS - 1,215 MIN | 3 G | 2 A | 1 YC
LAST MATCH: vs SKC | 24 MIN (SUB) | 75% PA | 1 CL | 2 KP



MF
NAPO MATSOSO

#27

2019 SEASON: 23 GP | 20 GS - 1,701 MIN | 5 G | 1 A | 4 YC | 1 RC
LAST MATCH: @ IND | 89 MIN | 69% PA



MF/F
ANTOINE HOPPENOT

#29

2019 SEASON: 30 GP | 20 GS - 1,978 MIN | 5 G | 2 A | 4 YC
LAST MATCH: @ STL | 90 MIN | 70.8% PA | 1 SH | 2 KP



MF
KENNEY WALKER

#32

2019 SEASON: 31 GP | 24 GS - 2,123 MIN | 1 G | 5 A | 1 YC
LAST MATCH: @ LOU | 12 MIN (SUB) | 44.4% PA | 2 TK



MF
PAOLO DeIPICCOLO

#36

2019 SEASON: 17 GP | 10 GS - 915 MIN | 2 G | 3 YC
LAST MATCH: @ STL | 90 MIN | 84.6% PA | 1 SH | 1 KP



F
ARDA BULUT

#38

2019 SEASON: N/A
LAST MATCH: N/A



GK
BEN LUNDT

#39

2019 SEASON: 12 GP | 12 GS - 1,080 MIN | 27 SV | 11 GA | 4 CS
LAST MATCH: @ STL | 90 MIN | 4 SV | CLEAN SHEET



D
JONATHAN GOMEZ

#42

2019 SEASON: N/A

LAST MATCH: vs. MEM | 67 MIN | 73.3% PA | 1 SH



MF
DAMIR BEGANOVIC

#45

2019 SEASON: N/A

LAST MATCH: N/A



MF
ELIJAH WYNDER

#61

2019 SEASON: N/A

LAST MATCH: vs LDN | 23 MIN (SUB) | 100% PA | 1 SH



F
JASON JOHNSON

#77

2019 SEASON: 15 GP | 5 GS - 458 MIN | 3 G | 1 A | 7 KP

LAST MATCH: vs. MEM | 6 MIN (SUB) | 1 SH

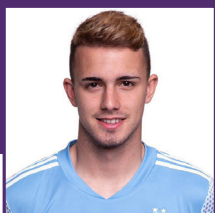


MF
DEVON "SPEEDY" WILLIAMS

#80

2019 SEASON: 30 GP | 30 GS - 2,760 MIN | 1 G | 1 A | 7 YC

LAST MATCH: @ STL | 90 MIN | 88.7% PA | 2 SH | 1 G



GK
MUAMER UGARAK

#91

2019 SEASON: N/A

LAST MATCH: N/A

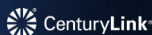
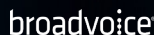


Kick off your cloud technology journey with Virtual Telecomm.

Cloud Phones • SD-WAN • Internet • Security



Thank you to the following carriers for partnering with Virtual Telecomm & Louisville City FC.



virtualtelecomm.com 502.400.8600

**WE LOVE LOUISVILLE.
WE LOVE SOCCER.
WE LOVE LOU CITY.**

LISTEN TO THE GAMES LIVE:



LOUISVILLE CITY FOOTBALL CLUB

2020 SCHEDULE

3.7 @ NORTH CAROLINA FC **W 1-0**

7.12 PITTSBURGH RIVERHOUNDS SC **L 1-3**

7.18 SAINT LOUIS FC **L 0-1**

7.25 SPORTING KC II **W 1-0**

7.29 SPORTING KC II **L 1-2**

8.8 INDY ELEVEN **D 1-1**

8.15 LOUDOUN UNITED FC **W 2-0**

8.19 SPORTING KC II **W 4-1**

8.26 INDY ELEVEN **W 1-0**

8.29 @ SAINT LOUIS FC **D 1-1**

9.5 @ INDY ELEVEN **W 3-1**

9.12 SAINT LOUIS FC **W 3-0**

9.16 @ INDY ELEVEN **W 2-0**

9.19 MEMPHIS 901 FC **W 4-1**

9.26 @ SAINT LOUIS FC **W 1-0**

10.3 SPORTING KC II **7:30 PM**

HOME

AWAY

502-LOU-CITY



LOUCITY.COM



RACING LOUISVILLE FC

TAKES THE PITCH FOR THEIR
INAUGURAL SEASON IN 2021! DON'T
MISS YOUR CHANCE TO SEE TEAM
USA STARS SUCH AS ROSE LAVELLE,
MEGAN RAPINOE, AND ALEX
MORGAN AT LYNN FAMILY STADIUM.

SECURE YOUR SEASON TICKETS
STARTING AT \$198 TODAY AT
RACINGLOUFC.COM





VOLUFORMS

PRINT • PROMOTE • DISTRIBUTE

Putting Your Best Brand Forward.



voluforms.com  

zies
yers • Flags
s • Bags • Stickers
ners • Menus • Glassware
s • Rack Cards • Bags • Stickers
ns • Uniforms • Planners • Hats • Flyers
Branded Wearables • Brochures • Door Han
arking Passes • Wristbands • Bandanas •
ngers • Rack Cards • Bags • Stickers • Key
ow Decals • Game Programs • Uniforms •
ks • Bags • Stickers • Keychains • Magnet
Window Decals • Game Progra
Backpac

LOUISVILLE CITY FC OFFICIAL BROADCAST PARTNER

WATCH THE 2020 SEASON GAMES ON THESE STATIONS



**NEW! LIVE STREAMING GAMES
ON WDRB NOW APP**

**Download for your Big Screen or Tablets*



WDRB IN THE MORNING
THE SOURCE

YOUTH CLUB PARTNERS

Louisville City FC is proud to be a vibrant, active member of our community, and to partner with many of our region's Youth Soccer Clubs through our Youth Partner Program. Through this program we hope to aid in the development of our Youth Partner Clubs by offering a plethora of incentives and unprecedented, up-close access to a professional club. We're proud to call the following organizations our partners:



ATLETICO FLAMES



**CLARK COUNTY
SOCCER ASSC.**



**FALLS CITY
SOCCER CLUB**



**KENTUCKY FIRE
JUNIORS**



LARUE COUNTY



LOUISVILLE SOCCER



**MOCKINGBIRD
VALLEY SOCCER**



OHIO ELITE



**OLDHAM SOCCER
CLUB**



SOCCER SHOTS



**SOUTHERN INDIANA
UNITED**



SPENCER COUNTY

Interested in becoming a Louisville City FC Youth Club Partner?
Contact Dylan Terry at dterry@louisvillecityfc.com.

BROUGHT TO YOU BY
 **Visionworks**
DOCTORS OF OPTOMETRY
DR. MARK LYNN & ASSOCIATES, PLLC

Kentucky's insurance company. If you're keeping score.



Things can change in an instant with one kick — and in life. So it's nice to know that when you experience loss from a storm or accident, Kentucky Farm Bureau Insurance will stand behind you with the winning service you deserve. Find your local agent at kyfb.com.

KENTUCKY FARM BUREAU



INSURANCE

BIG ON COMMITMENT.®

NEW ARRIVALS!



COMMONWEALTH
CREDIT UNION

Cheering
YOU ON!

WeCUDifferently.com

COMMUNITY PARTNERS

Algood Food Co.	Limestone Title
All Pro Satellite	Louisville Soccer
Atlas Companies	Midwest Metals
Atria Senior Living	Mindel Scott
Automated Living	Museum Bees
Belfor Property Restoration	Oasis Solutions Group
Bumper to Bumper	Office Resources, Inc.
C&I	Premier Health & Fitness
Dant Clayton	PremPack
DD Williamson	Priority Radiology
DMLO	RegenEn Solar
First Kentucky Trust	Regions Bank
Hyland Insurance	Thomas Car Wash
Insuramax	Vendome Copper Works
Ladder Now, LLC	Walker Mechanical

CHAMBER AND ASSOCIATION PARTNERS

Jeffersontown
Louisville Independent Business Alliance
Main Street Association
Nulu Business Association
Riverport Business Association
St. Matthews Chamber

**Score More Free
Time When You
Order Game
Day Faves for
FREE Pickup**



HELP FOR THE *Holidays*



2020 has been a challenging year for many, but especially for families who have a child with special medical needs.



We need your help to make this holiday season special for Kosair Kids® and their families.

Purchase a gift from our Amazon Wish List:

bit.ly/KC_wishlist



Donate to the Kosair Kid Experience Fund:

kosair.org/celebrate

