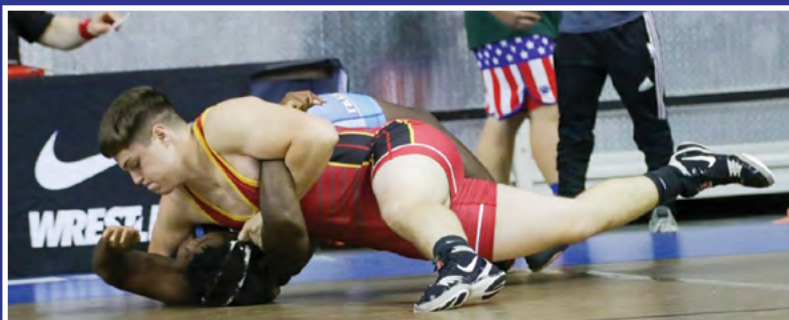
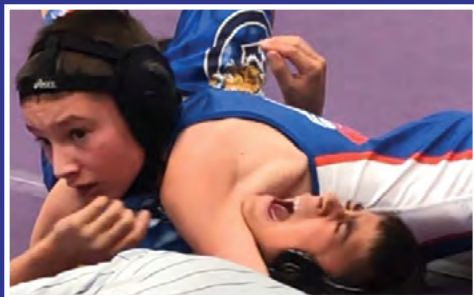


INDIANA STATE WRESTLING ASSOCIATION

ISWA MEMBER 2021 GUIDE

Wrestling for Now and the Future



SMOKEHOUSE

CATERING COMPANY

www.SmokeHouseCateringCo.com
Specializing in Custom Catering & Concessions
For All Budgets & Needs



Smokehouse Catering
Company
Is Proud To Be Able
To Support Indiana's
Finest Teachers,
Schools,
Sports Teams,
Academic Teams
And
Tomorrow's Future.

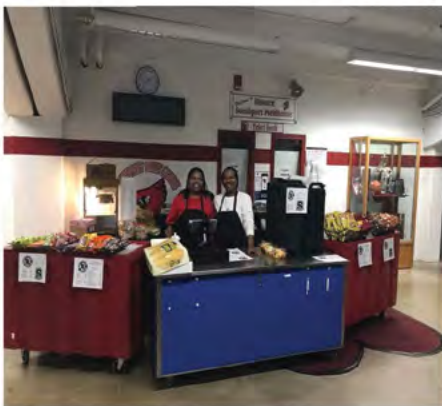
Food & Beverage Solutions Available For All Your Needs

Staffed Catering / Drop Off Catering
Box Lunches / Department Meetings
Club Banquets / Team Dinners
Food Trucks / Fundraising Sales
Breakfast, Lunch, or Dinner



Full Service Customized Concessions For Any Occasion & Time of Day

No Shopping, No Volunteers, No Staffing, No Worries



Inside, Outside, Food Truck, Food Trailer

Just Collect
The Money
From
Commission
Kick Back



Self Contained—No Ice, Water, or Electric Required



ISWA Wrestlers Earn 110 Medals at the 2020 IHSA State Finals



A near-capacity crowd of wrestling fans turned out for the 82nd Annual Indiana High School Athletic Association Individual Wrestling State Finals, held Feb. 21-22, 2020, at Bankers Life Fieldhouse in Indianapolis.

Out of the 112 medals the IHSA awards to wrestlers placing 1st through 8th in 14 weight classes at the statewide competition, ISWA/USAW members earned 110 of those medals.

Great job representing our organization well!

— TABLE OF CONTENTS —

Club Members List	4	Freestyle & Greco-Roman State Finals	27
USA Wrestling Memberships	5	Women's Freestyle State Finals	29
Scholarship Recipients: Founders	6	ISWA Sections Map	30
Scholarship Recipients: Memorial	7	ISWA Note Regarding 2020 Results	31
John Hurre Awards	8	ISWA Sponsorship Levels	32
Director Profiles	9	Elementary Dual Team State Champs	33
Men's Age Divisions & Weight Classes	14	Middle School Team State Duals	34
Women's Age Divisions & Weight Classes	15	Middle School Team State Girls Division	35
Duration of Bouts & Classification Points	16	Women's National Team	36
Rules & Regulations for All Sanctioned Events	17	Heartland Duals Team Indiana	36
Policy Reminders & Updates	19	Fargo Junior National Men's Championships	37
National Team Event Schedule	20	Fargo Junior National Women's Championships	37
Elementary Dual Team State Championships	21	Kids Freestyle & Greco-Roman Nationals	38
Photo Contest Winner	22	Celebrating 43 Years	39
Middle School Dual Team Championships	23	Valued Sponsor	40
Folkstyle State Finals	24	Indiana High School Wrestling Coaches Association	40
State Finals Table Help - All Styles	25	Board of Directors	42
Women's Folkstyle State Finals	26		

INDIANA STATE WRESTLING ASSOCIATION, INC.

5715 Churchman Ave., Ste. L • Indianapolis, IN 46203

Phone: 317-780-1885
Email: office@iswa.com
Website: iswa.com

Mailing Address:
P.O. Box 157
Beech Grove, IN 46107
ISWA OFFICE HOURS
Weekdays 9am-3pm



PHOTO CREDITS:

Go to page 22 to learn about the photo contest winner.



2019-2020

Club Members List

THANK YOU FOR YOUR SUPPORT

The ISWA would like to thank the following 192 registered clubs of the 2019-20 wrestling season.

Alexandria Wrestling Academy	Evansville Central Wrestling Academy	Maurer Coughlin Wrestling Club	Shelbyville Wrestling Club
Apache Wrestling Club	Falcon Wrestling Club	Memorial Tiger Wrestling Club	Shenandoah Wrestling Club
Avon Wrestling Club	Fighting Irish Wrestling Club	Merrillville Pirates Wrestling Club	Silver Creek Wrestling Club
Baron Elite Wrestling Club	Floyd Wrestling Club	Midwest Regional Training Center	Snider Wrestling Club
Battling Braves	Franklin Central Wrestling Club	Milan Tribe	Solid Tech Wrestling Club
Beast Mode Wrestling Club IN	Franklin Wrestling Club	Mishawaka Wrestling Club	South Adams Gold Wrestling Club
Beech Grove Wrestling Club	Frankton Wrestling Club	Monrovia Youth Wrestling Club	South Bend Wrestling Club
Bloomington South Wrestling Club	Garrett Wrestling Club	Mooresville Wrestling Club	South Dearborn
Bluffton Wrestling Club	Goshen Wrestling Club	Muncie Wrestling Club	South Gibson Wrestling Club
Boilermaker RTC	Greenfield Wrestling Club	Mustang Wrestling Club	Southmont Wrestling Club
Boonville Wrestling Club	Greensburg Wrestling Club	New Castle Youth Wrestling Club	Southport Wrestling Club
Bremen Wrestling Club	Greentown Wrestling Club	New Haven Wrestling Club	Southridge Wrestling Crew
Broncho Wrestling Club	Greenwood Wrestling Club	Noblesville Youth Wrestling Club	Southside Wolverines
Brownsburg Wrestling Club	Griffith Wrestling Club	Normonco Wrestling Club	Spartan Wrestling Club
Bulldog Premier	Highland Wrestling Club	North Husky Elite Wrestling Club	Star Wrestling Club
BWC	Hobart Wrestling Club	Northeastern Wrestling Club	Steuben County Wrestling Club
Cardinals Wrestling	Hornet Swarm Wrestling Club	Northview Wrestling Club	Sullivan County Wrestling Club
Carmel USA Wrestling Club	Hornet Wrestling Club	Northwood Panther Wrestling Club	Taylor Wrestling Club
Carroll Wrestling Club	HSE Wrestling Club	Norwell Wrestling Club	Team Jeff Wrestling Club
Cascade Youth League Wrestling Club	Huntington County Wrestling Club	Oak Hill Wrestling Club	Tecumseh Wrestling Club
Castle Wrestling Club	Husky Wrestling Club	One on One Wrestling Club	Tell City Wrestling Club
Center Grove Wrestling Club	IHSWCA	Panther Wrestling Club	Terre Haute Northside Wrestling Club
Centerville Bulldog Wrestling Club	Indian Creek Wrestling Club	Patriots Wrestling Club	Tipton Wrestling Club
Central Indiana Academy of Wrestling	Indian Wrestling Club	PAWS Elite Wrestling Club	Tri Titans WC (formerly So. Henry Stinger)
Charlestown Wrestling Club	Indiana Girls Wrestling Ignites	Penn Wrestling Club	Triton Trojan Wrestling Club
Chesterton Wrestling Club	Indiana RTC	Perry Meridian Wrestling Club	Trojan Country Youth Wrestling Club
Churubusco Wrestling Club	Indy Rare Breed WR (formerly Beat the Streets)	Pike County Chargers	Union County Wrestling Club
Club Madison	Indy West Wrestling Club	Pioneer Panther Wrestling Club	Valparaiso Vikings WC
Columbia City Wrestling Club	Intense Wrestling Club	Plainfield Wrestling Club	Vincennes Grapplers Wrestling Club
Columbus East Wrestling Club	Invicta Wrestling Academy	Portage Wrestling Club	Warpath Wrestling Club
Columbus North Wrestling Club	Jasper Wrestling Club	Princeton Wrestling Club	Warren Wrestling Academy
Contenders Wrestling Academy	Jay County Wrestling Club	Prodigy Wrestling Club	Warrior Nation Wrestling Club
Corydon Wrestling Club	Jet Wrestling Club	Red Cobra Wrestling Academy	Warrior Wrestling Club
Covington Wrestling Club	Jimtown Wrestling Club	Region Wrestling Academy	Warsaw Tiger Wrestling
Cowan Wrestling Club	John Glenn Wrestling Club	Reitz Wrestling Club	Wawasee Wrestling Club
Crawfordsville Wrestling Club	Knights Wrestling Club	Rhino Elite National Team	WC Trojan Wrestling Club
Culver Wrestling Club	Kokomo Wildkat Wrestling Club	Rhynos Wrestling Academy	WDWC
Daleville Bronco Wrestling Club	Krieb's Club Wrestling	Richmond Wrestling Club	WEBO Wrestling Club
Danville Wrestling Club	LaPorte Wrestling Club	Rick Larsen Wrestling Club	West Lafayette Youth Wrestling Club
Decatur Central Wrestling Club	Lawrenceburg Youth Wrestling Club	Rise Elite Club	Western Indiana
Decatur Wrestling Club	Lebanon Tiger Wrestling Club	River City Wrestling Club	Western Wrestling Club
Delta Wrestling Club INC	Legends of Gold (IN Pride)	Rochester Wrestling Club	Westfield Wrestling Club
Dragon Wrestling Club	Leo Wrestling Club	Rockies Wrestling Club	Wheeler Bearcat Wrestling Club
East Central Wrestling Club	Lowell Wrestling Club	Roncalli Wrestling Foundation	Whiteland Wrestling Club
Eastern Wrestling Club	Madman Wrestling Academy LLC	Saints Wrestling Club	Winchester Wrestling Club
Edgewood Wrestling Club	Martinsville Madmen Wrestling Club	Salem Lions Wrestling Club	Yorktown Wrestling Club
Elite Athletic Club	Mater Dei Wrestling Club	Senator Wrestling Club	Zionsville Wrestling Club
Elwood Elite Wrestling Club		Seymour Wrestling Club	

USA WRESTLING Memberships



16U/Cadets & Juniors turning 17 this wrestling season are required to complete SafeSport certification before renewing athlete memberships. No exceptions!

NEW MEMBERSHIPS

All memberships can be purchased online through the USA Wrestling site at usawmembership.com. Athlete membership fee costs \$40. Credit card payments only.

All ISWA State events require verified athlete cards.

Birth Verification is required for NEW MEMBERS ONLY!

New members will need to verify their date of birth by submitting a copy of their birth certificate to the ISWA office. Once the office receives proof of birthdate, your card will no longer show as pending in the system.

NOTE: Athletes with a birthdate on or before 9/1/2000 are considered adults and must purchase an Open License card for \$50.

Members 13 years and older may create an individual profile. Any member younger than 13 years old requires an adult to create an online profile. Upon creating a new profile, members must **claim the profile**.

COACHES & OFFICIAL MEMBERSHIPS FOR 2020/2021

Coach and Official memberships are now called "Wrestling Leader" with only a 1-year membership available. This membership requires a \$20 NCSI background check and SafeSport certification. The 90-minute SafeSport tutorial includes three modules and can be accessed through the USAW membership website.

ADDING NEW MEMBERS

USAW will direct members of these required steps prior to membership purchase. Athlete membership purchase options can be found under the Membership tab. Chartered Club administrators may manage club memberships, and renew and create profiles for new members.

Please contact office@iswa.com with any questions.

USA Wrestling, the National Governing Body for Wrestling in the United States, has delegated the Indiana State Wrestling Association the right, duty and responsibility to develop, conduct, sanction and promote all state and local programs in the state of Indiana.

The ISWA will provide a program for all age divisions. Membership and insurance for all wrestlers and clubs will be provided through the state association by USA Wrestling. All USA wrestlers will receive a USAW Competitor's Membership Card. This affords our wrestlers the opportunity to participate in all ISWA scheduled tournaments and events, as well as all USA Wrestling events throughout the U.S.



USA WRESTLING CLUB CHARTER MEMBERSHIPS

YOU MAY JOIN OR RENEW YOUR CLUB MEMBERSHIP ONLINE AT USAWMEMBERSHIP.COM. LOG IN TO SELECT "MANAGE CLUB CHARTER" and submit a \$125 credit card payment and request an additional insurance certificate for a \$30 fee if your club would like to purchase one. If your club wishes to add a club page to the ISWA website, please email office@iswa.com

USA Wrestling has acquired COMMERCIAL GENERAL LIABILITY INSURANCE/ UMBRELLA LIABILITY POLICY, which provides coverage for USA Wrestling Chartered Clubs. The combined liability limit for these policies is \$5,000,000 per occurrence. All clubs will receive a General Liability Certificate of Insurance. This proves your club is insured and outlines coverage limits. Many facility owners/operators will ask for this proof as a condition of using the facility. Residence locations are prohibited.

The owner/operator of a facility may also ask to be listed as a Certificate Holder on a Certificate of Insurance. This gives the owner/operator proof you have insurance and states that they will be notified of any changes. A \$30 Additional Insured Certificate is offered on the online application. Additional insured entities are extended the same coverage as the Chartered Club. Schools, school districts, and facility owners/operators often ask to be an additional insured.



Renew your club membership online at
usawmembership.com

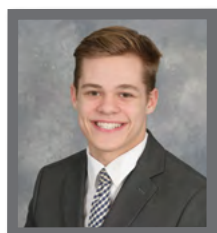


2020 ISWA Scholarship Recipients



The ISWA once again enjoyed the honor of awarding several scholarships to member athletes who've participated in the ISWA program for at least two years. Seven outstanding wrestlers received \$1,000 to apply toward college tuition. We can't wait to see what they accomplish next!

ISWA - Founders - SCHOLARSHIP RECIPIENTS



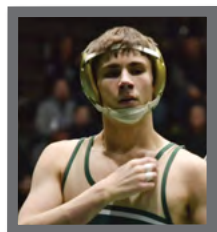
HAYDEN TIPMANN

FORT WAYNE SNIDER HIGH SCHOOL / FW SNIDER WC

3-year ISWA Member / 4-year Varsity wrestler / 2X IHSAA Semi-State Qualifier / IHSWCA Academic All-State 1st Team / National Honor Society / Principal's Advisory Board

Future Plans: Purdue University to study Biomedical Engineering

"I've always been someone who cares about other people. I hope to use what I learn and my degree to help as many people as I can through the field of biomedical engineering."



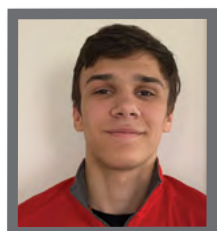
CARSON ELRED

WESTFIELD HIGH SCHOOL / WESTFIELD WC

8-year ISWA Member / 9X ISWA State FS Placer / 4X IHSAA State Qualifier / 2X IHSAA State Placer / National Honor Society & Spanish National Honor Society / Westfield Club Referee & Coach

Future Plans: Attend Purdue University to study Aeronautical Engineering

"My wrestling experiences gave me the perseverance to never let a loss or mistake put me down on the mat or in the classroom. ISWA events taught me discipline, from making weight and staying healthy, to listening to my coaches and showing respect to others."



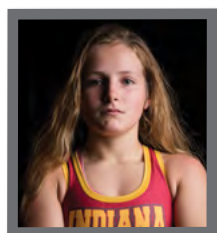
RAY RIOUX

AVON HIGH SCHOOL / AVON WC

14-year ISWA Member / 11X ISWA State Champion / Triple Crown Winner / 4X IHSAA State Placer / Avon WC Youth Camp Counselor & Coach / Avon Varsity Team Captain

Future Plans: Attend University of Indianapolis to study Secondary Education

"My entire life has been, and will continue to be, dedicated to wrestling. I plan on becoming a coach after college, which will allow me to continue to be involved in ISWA events and give back to the sport."



JARYN STRONG

TERRE HAUTE SOUTH HIGH SCHOOL / PRODIGY WC

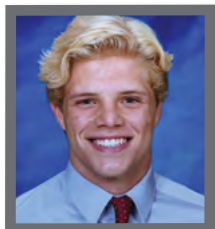
6-year ISWA Member / 3X ISWA State Champion / 2X ISWA State Runner-Up / 2X ISWA Team IN Member / 3X IHSGW State Placer / IHSGW State Runner-Up / 3-year T.H. South Varsity Wrestler / Team of Mercy Color Run Volunteer / H.S. Class Secretary / IHSAA Student Leadership Council / T.H. South School Senate

Future Plans: Attend Adrian College in Michigan

"Wrestling taught me how to have goals and reach for them, to never be satisfied, to work hard and push past major upsets or setbacks. It did not just shape me as a wrestler, but as a person overall."

ISWA
– Memorial –
 SCHOLARSHIP RECIPIENTS

ISWA
– Rollie Hoover Memorial –
 SCHOLARSHIP RECIPIENT



CADEN FRIEDT

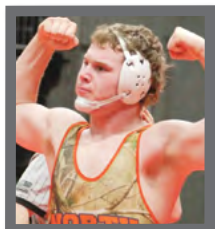
BELLMONT HIGH SCHOOL / DECATUR WC

14-year ISWA Member / 4X ISWA State Folkstyle Champ & 2X Freestyle Champ / IHSAA State Placer / National Honor Society

Future Plans: Attend Purdue University Fort Wayne

"Being a part of ISWA provided the platform, support and community that set me up to be the wrestler I was in high school and plan to be in college. I hope my journey is an inspiration for others to go after their wrestling goals, no matter the obstacles they face."

ISWA
– John Schattner Memorial –
 SCHOLARSHIP RECIPIENT



TAYLOR WEBSTER

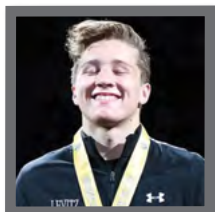
NORTH MONTGOMERY HIGH SCHOOL / NORMONCO WC

13-year ISWA Member / 13X ISWA State Champion & 3X Triple Crown Winner / 6X ISWA National Team Member / 2X USA All-American / 2X IHSAA State Placer / IHSAA Sportsmanship Award / 2X IHSAA Sectional, Regional & Semi-State Champion / Volunteer Reader at NMCSC Elementary Schools / 2019 IFCA Region 6 All-Star / 10-year Montgomery County 4-H Member

Future Plans: Attend Lakeland Community College to study Agricultural Economics

"As a wrestler, I have learned so much about what I am capable of, who I am as a person, about sacrifice, glory, defeat, adversity and how to respond in all of those situations. The experiences ISWA offered me really has made an impact in the man I am becoming, and the man I want to be."

ISWA
– Mike Dowden Memorial –
 SCHOLARSHIP RECIPIENT



ISIAH LEVITZ

PRAIRIE HEIGHTS HIGH SCHOOL / PRAIRIE HEIGHTS WC

15-year ISWA Member / ISWA State Folkstyle Champ & Freestyle Placer / 2X IHSAA State Placer / IHSWCA Jr. & Sr. Academic All-State 1st Team

Future Plans: Attend Indiana University to study Dental Hygiene

"I am determined to achieve what I view as greatness. I have been involved with wrestling and ISWA for the majority of my life. It has been a huge part of my success."

– Apply by April 1 –

APPLY FOR SCHOLARSHIPS ONLINE AT **ISWA.COM/SCHOLARSHIP**

SUBMISSION DEADLINE IS APRIL 1, 2021

ISWA.com

– John Hurrle Award Winners –

Lou Silverman received the 2019 John Hurrle Award. Silverman, the ISWA Cultural Exchange Director, grew up wrestling at tournaments held at Tech High School, where John Hurrle served as head coach for many years. Lou says time spent with John impacts him to this day, and he often thinks about John's positive influence on the sport and the kids, in particular.

"John is someone I've always had a tremendous amount of respect for and, I think, someone who I have tried to emulate," Lou said. "So, receiving this award is very meaningful for me. I was completely surprised, appreciative and happy to learn I'd received this honor. To be recognized by the ISWA means a lot to me."



Through wrestling, Lou got the opportunity to travel the world. One of his fondest memories stems from 1989, when he represented the U.S. in the Maccabiah Games in Israel. He went on many ISWA national trips, coaching "some of the finest wrestlers this state has produced" and spending time with many fine Indiana coaches.

"I cherish those memories," said Lou, who after serving on the ISWA Board in the mid-90s, rejoined the board in 2017. He organized his first ISWA international trip to New Zealand in 2018, and hopes to resume international wrestling trips after the pandemic to share his love of both wrestling and travel.

"It was my privilege to present Lou this award in honor of a great man and huge influence on wrestling," said Jim Littlejohn, a long-time ISWA member and officiant.

Joseph and Beth Lybarger were recognized as the 2020 John Hurrle Award recipients at the 49th Annual Indiana Wrestling Coaches Hall of Fame Banquet in February. "I couldn't believe it. I was just ecstatic," Beth says of her reaction upon learning they won this year's honor. "We just love the sport and working with the kids."

Beth currently serves as the Section 3 Pairing Official, and they both remain active in the Mooresville wrestling program, working with kids of all ages and helping teach team managers about scoring and officiating. The couple first got involved with Indiana wrestling in the early '90s, when their four children all entered the sport at a young age and continued competing for more than a decade. Joseph served as a past ISWA registration director and coached through the years. Beth led Team IN as the women's director, coaching their only daughter at nationals, where she placed two of her four years.



"We never thought about winning an award for any of it," says Beth, who proudly displays the award on a wall in her sewing room. "You don't think about other people noticing what you're doing over the years. The way I feel about the sport and working with kids, this is just a cherry on top of the cake."

– SAVE THE DATES –

JOHN HURRLE AWARD NOMINATION DEADLINE: JAN. 1, 2021

John Hurrle, one of the original founders and lifetime member of the Indiana State Wrestling Association, coached for many years and served on the Board of Directors for 13 years. The ISWA is dedicated to the example that John set for our organization. John's motto was "DO IT FOR THE KIDS!" It is a motto the ISWA has adopted as its own. The John Hurrle Award is presented annually by the ISWA to an individual who has made an outstanding contribution to the sport of Amateur Wrestling in the State of Indiana. The winner is chosen from nominations submitted by ISWA member clubs and directors, and is presented to the recipient at the Indiana High School Wrestling Coaches Association Banquet held each year.

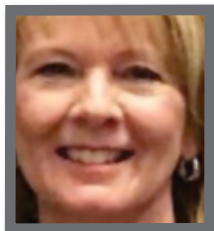


ANNUAL ISWA BID MEETING: SUNDAY, SEPTEMBER 12, 2021

Stay tuned for more information about the upcoming season's Annual ISWA Bid Meeting, which will provide more training and content to better educate and inform our member clubs.

SCHOLARSHIPS APPLICATION DEADLINE: APRIL 1, 2021

2020-2021 ISWA Director Profiles



STATE CHAIR:

PAT CULP

DUTIES:

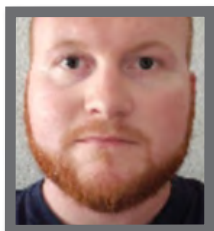
Oversees overall general operation of the Indiana State Wrestling Association.

TIME IN CURRENT ROLE:

Pat is serving as State Chair in 2019-2020 and for 2020-2021.

PREVIOUS ROLES:

Served as Vice Chair for 2018-2019; as Pairing Developmental Director from 2011 through 2017; and as Section Director in 2001.



VICE CHAIR / ADMINISTRATION:

BEN NICELY

DUTIES:

General oversight of the ISWA Directors who serve on the administrative side of the Board, working with his direct reporting members to ensure all areas of administration operate properly.

TIME IN CURRENT ROLE:

Ben is serving as Vice Chair in 2019-2020 and for 2020-2021.

PREVIOUS ROLES:

Involved in the ISWA for 13 years, Ben resides in Section 4. Prior to his election to the Executive Board, he served as a vendor and referee; as a ISWA mat official 2013 to present; national team leader 2011-2013; assistant team leader 2008-2010; and coach from 2007-2016 for various clubs.



VICE CHAIR / PROGRAMS:

JIM TONTE

DUTIES:

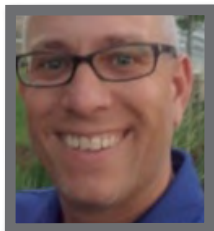
General overall oversight of the ISWA Directors who serve on the programs side of the Board, working with his direct reporting members to make sure all areas of programs run smoothly.

TIME IN CURRENT ROLE:

Jim has served as Vice Chair since 2018.

PREVIOUS ROLES:

Serving the Indiana wrestling community for many years, Jim resides in Section 4 and has held numerous positions on the ISWA Board prior to his election to the Executive Board. He served as Junior Director from 2012-2017 and 2003-2005; as RTC Director from 2001-2002 and 1995-1996; and as Section Director for 1999-2000.



TREASURER:

JEFF STRUEDER

DUTIES:

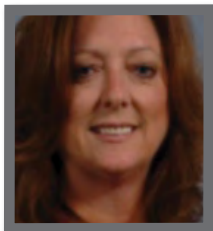
Responsible for our financial health as an organization, allowing ISWA to continue providing wrestling opportunities for athletes throughout Indiana.

TIME IN CURRENT ROLE:

Serving as Treasurer since 2017.

PREVIOUS ROLES:

Jeff is serving his fourth year on the ISWA Board and resides in Section 3. Before being elected to the Executive Board, he stayed involved as a 15-year volunteer and a parent to three kids, who all compete in athletics.

**SECRETARY:****TINA FOUTS****DUTIES:**

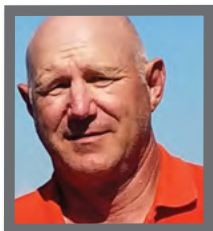
Responsible for organizing and memorializing monthly board meetings, as well as assisting with the Annual Meeting each year.

TIME IN CURRENT ROLE:

Tina has served in this role since 2014.

PREVIOUS ROLES:

Prior to her election to the Executive Board, Tina served as the Registration Director from 2011-2013, and as a non-board member volunteer coordinator at state tournaments for several years.

**TOURNAMENT DIRECTOR:****ROBY WEBSTER****DUTIES:**

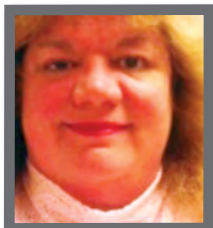
Overall organization and successful running of ISWA state tournaments.

TIME IN CURRENT ROLE:

Serving as Tournament Director since 2019.

PREVIOUS ROLES:

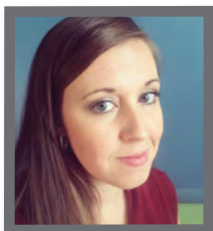
Roby has served on the ISWA Board for two years and resides in Section 3. With three kids who wrestled and members of Team IN national trips, Roby volunteered at ISWA tournaments for many years prior to joining the board.

**INDIANA REPRESENTATIVE TO NATIONAL PAIRINGS:****JEAN WHETSTONE****DUTIES:**

Responsible for representing Indiana in USA Wrestling and keeping Indiana updated on all areas of pairings.

TIME IN CURRENT ROLE:

Jean has served in Board positions related to pairings since 2007.

**PAIRINGS OFFICIALS DEVELOPMENTAL DIRECTOR:****JENNIFER RATLIFF****DUTIES:**

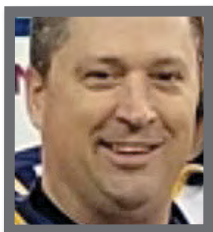
Recruit and train pairing officials in the state, organize the wrestling schedules at ISWA state tournaments, and assist our local clubs with staffing and questions for local tournaments.

TIME IN CURRENT ROLE:

Serving in this role for 2020-2021.

PREVIOUS ROLES:

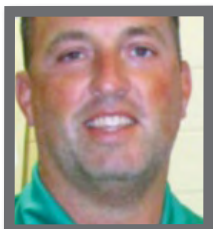
Jennifer has remained heavily involved in local and state tournament operations for years.

**FOLKSTYLE REFEREES DEVELOPMENTAL DIRECTOR:****BART WELCH****DUTIES:**

Responsible for recruitment, training and staffing of Folkstyle referees for state tournaments, as well as assisting local tournaments with referee staffing needs.

TIME IN CURRENT ROLE:

Bart has served in this role since 2017.

**STATE COACHES DIRECTOR:****DANNY STRUCK****DUTIES:**

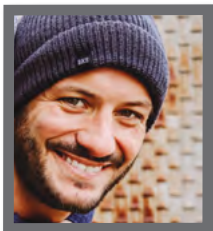
Recruit and train coaches in Indiana. Danny ensures changes in the sport get passed along to coaches, so they can stay current on the ever-changing rules. He also manages the assigning of coaches for ISWA national teams and trips.

TIME IN CURRENT ROLE:

Danny has served in this role since 2004.

PREVIOUS ROLES:

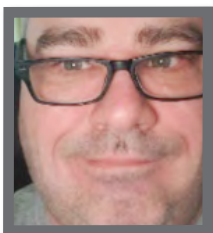
Served as Cultural Exchange Director in 201 and a Team Leader.

**FOLKSTYLE DEVELOPMENTAL DIRECTOR:****RYAN PARRISH****DUTIES:**

Responsible for statewide development of Folkstyle wrestling, assisting in overall organization and oversight of the state's ISWA Folkstyle tournaments.

TIME IN CURRENT ROLE:

Ryan has served in this role since 2016 and a Team Leader.

**KIDS DIRECTOR:****JASON MILLER****DUTIES:**

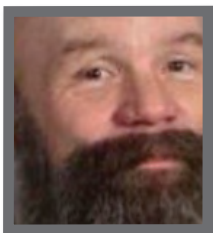
Oversees and assists with state tournaments and state teams for athletes who fall into the younger ISWA age groups (6U-14U).

TIME IN CURRENT ROLE:

Jason has served in this role since 2016.

PREVIOUS ROLES:

Served as Folkstyle Developmental Director in 2015 and a Team Leader.

**CADET DIRECTOR:****JAKE O'NEILL****DUTIES:**

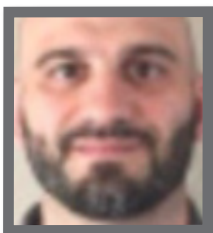
Serves the Cadet age group within the ISWA, assisting with state tournaments and state teams for athletes in the Cadet age group, and working closely with the Junior Director to staff and recruit for Cadet national teams.

TIME IN CURRENT ROLE:

Jake has served in this role since 2018.

PREVIOUS ROLES:

Team Leader.

**JUNIOR DIRECTOR:****BRADY EPPERT****DUTIES:**

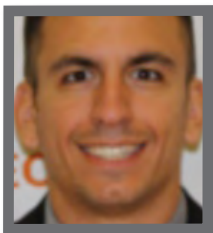
Serves the Junior age group within the ISWA, assisting with state tournaments and state teams for athletes in the Junior age group, and working closely with the Cadet Director to staff and recruit for Junior national teams.

TIME IN CURRENT ROLE:

Brady has served in this role since 2018.

PREVIOUS ROLES:

Served as Cadet Director for 2016-2017, Folkstyle Director from 2013-2015, and a Team Leader.

**TEAM LEADER DIRECTOR:****THOMAS POMPEI****DUTIES:**

Responsible for staffing and training team leaders for ISWA national trips

TIME IN CURRENT ROLE:

Thomas has served in this role since 2015.

PREVIOUS ROLES:

Team Leader.

**WOMEN'S DIRECTOR:****JASON DELOIS****DUTIES:**

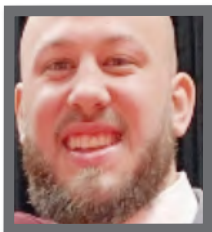
Help grow the participation of women athletes in the sport of wrestling, as well as oversee the women's state tournaments.

TIME IN CURRENT ROLE:

Jason has served in this role since 2018.

PREVIOUS ROLES:

Team Leader.

**REGIONAL TRAINING CENTER DIRECTOR:****JOSH CURRY****DUTIES:**

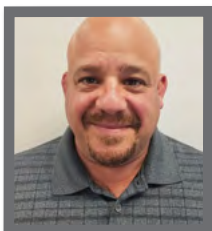
Organize scheduling, including training schedules, and working with coaches to create training opportunities for athletes, with the goal of improving and growing Olympic styles in Indiana.

TIME IN CURRENT ROLE:

Josh is serving in this role for 2020-2021.

PREVIOUS ROLES:

Served as Greco Director in 2019.

**CULTURAL EXCHANGE DIRECTOR:****LOU SILVERMAN****DUTIES:**

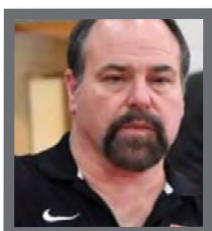
Arrange cultural exchange trips for athletes, coordinating with other countries and states to organize both wrestling trips to other countries and hosting athletes from other countries who travel to Indiana.

TIME IN CURRENT ROLE:

Lou has served in this role since 2017.

PREVIOUS ROLES:

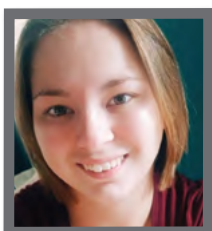
Served as the Junior Director for 1995-1996 and a Team Leader.

**MAT OFFICIALS DEVELOPMENTAL DIRECTOR:****MARK MUNDY****DUTIES:**

Recruit, train and develop new mat officials in the Olympic wrestling styles, as well as staff ISWA state tournaments and assist local tournaments with mat official staffing.

TIME IN CURRENT ROLE:

Mark has served in this role since 2007.

**LOGISTICS DIRECTOR:****DARBY NICELY****DUTIES:**

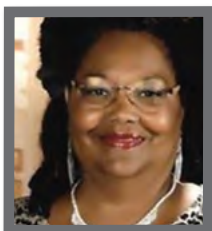
Coordinate travel and accommodations for not only our national trips, but also for tournament staff working at ISWA state tournaments.

TIME IN CURRENT ROLE:

Darby has served in this role since 2019.

PREVIOUS ROLES:

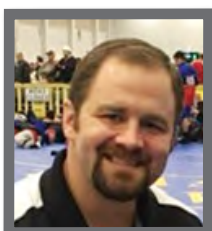
Darby joined the ISWA Board two years ago and resides in Section 4.

**HOSPITALITY DIRECTOR:****LINDA ROBINSON****DUTIES:**

Responsible for providing refreshments for all tournament staff at our state tournaments and any national tournaments hosted by the ISWA, as well as the Annual Meeting attended by ISWA Board members and Club representatives.

TIME IN CURRENT ROLE:

Linda has served in this role since 2002.

**OLYMPIC STYLE DIRECTOR:****BLAKE MAURER****DUTIES:**

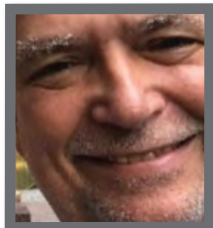
Responsible for promoting and growing both Freestyle and Greco Roman wrestling in Indiana.

TIME IN CURRENT ROLE:

Blake is serving in this role for 2020-2021.

SECTION DIRECTORS

DUTIES: ISWA Section Directors are responsible for communicating with local clubs, providing important information and assisting in coordinating tournament scheduling for their part of the state.



SECTION 1 DIRECTOR:

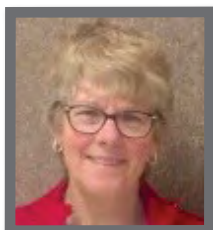
MARK GALKA

TIME IN CURRENT ROLE:

Mark has served in this role since 2012, and also in 2008.

PREVIOUS ROLES:

Served as the Folkstyle Director from 2002-2005 and a Team Leader.



SECTION 2 DIRECTOR:

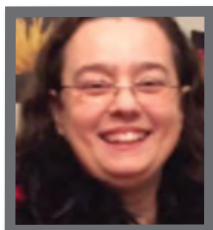
MARY FRIEDT

TIME IN CURRENT ROLE:

Mary has served in this role since 2002.

PREVIOUS ROLES:

ISWA Folkstyle State Finals announcer.



SECTION 3 DIRECTOR:

JENNIFER PIERSON

TIME IN CURRENT ROLE:

Jennifer has served in this role since 2016.

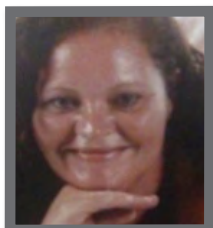


SECTION 4 DIRECTOR:

MARK STEVENSON

TIME IN CURRENT ROLE:

Mark has served in this role since 2009.



SECTION 5 DIRECTOR:

MICHELLE KASTER

TIME IN CURRENT ROLE:

Michelle has served in this role since 2017, and also in 2013.

PREVIOUS ROLES:

Served as Registration Director from 2014-2016.



2021 Men's



AGE DIVISIONS AND WEIGHT CLASSES

The age divisions and weights listed below will be used at all ISWA Folkstyle, Freestyle and Greco-Roman State Final Events.

AGE DIVISIONS	BIRTH DATES	WEIGHT CLASSES
PEE-WEE 6U	BORN 2015–2016	35, 40, 45, 50, 55, 65, 75, 85 (10 lbs maximum difference)
BANTAM 8U	BORN 2013–2014	43, 45, 49, 53, 56, 62, 70, 85 (15 lbs maximum difference)
INTERMEDIATE 10U	BORN 2011–2012	49, 53, 56, 59, 63, 67, 71, 77, 84, 93, 105, 120 (20 lbs maximum difference)
NOVICE 12U	BORN 2009–2010	58, 63, 67, 70, 74, 78, 82, 86, 92, 98, 108, 117, 135, 160 (25 lbs maximum difference)
SCHOOLBOY 14U	BORN 2007–2008	71, 77, 83*, 87, 92*, 97*, 102, 106*, 110, 114*, 119, 125*, 130, 136*, 149*, 165*, 187*, 250 (*UWW Qualifying SB Pan American Weight Classes)
CADET 16U	BORN 2005–2006	88, 94, 100, 106, 113, 120, 126, 132, 138, 145, 152, 160, 170, 182, 195, 220, 285
USA JUNIOR	BORN 9/1/2001 and after plus enrolled in grades 9-12	100, 106, 113, 120, 126, 132, 138, 145, 152, 160, 170, 182, 195, 220, 285
UNIVERSITY	BORN 1997–2002 must have graduated from high school, and be at least 17 years old but less than 28 years old on 1-1-2020	110, 121, 132, 145.5, 163, 185, 211.5, 264.5
SENIOR	BORN 1992–2001 or before	121, 132, 145.5, 163, 185, 211.5, 264.5
VETERAN	BORN 1946–1991 or before	110, 138.5, 152, 167.5, 187.25, 213.75, 286.5

USA Wrestling does not include the Pee-Wee age division at any regional or national event.

At the state level only, weight classes will be added for Pee-Wee through Novice age division wrestlers weighing heavier than the listed weights. ISWA will adjust weight classes accordingly at the state level to accommodate wrestlers.

2021 ISWA ELEMENTARY DUAL TEAM STATE CHAMPIONSHIP – WEIGHT CLASSES
43, 49, 54, 59, 63, 68, 73, 78, 84, 90, 98, 105, 115, 130, HWT (up to 175)

2021 ISWA MIDDLE SCHOOL DUAL TEAM STATE CHAMPIONSHIP – WEIGHT CLASSES
75, 80, 85, 90, 95, 102, 110, 117, 125, 132, 140, 150, 160, 175, 195, 220, 275

Wrestlers may move up one weight class.



2021 Women's



AGE DIVISIONS AND WEIGHT CLASSES

The age divisions and weights listed below will be used at all ISWA Folkstyle and Freestyle Final Events.

AGE DIVISIONS	BIRTH DATES	WEIGHT CLASSES
PEE-WEE 6U	BORN 2015–2016	35, 40, 45, 50, 55, 65, 75, 85 (10 lbs maximum difference)
BANTAM 8U	BORN 2013–2014	45, 50, 55, 60, 70, 85 (15 lbs. maximum difference)
INTERMEDIATE 10U	BORN 2011–2012	50, 55, 60, 65, 70, 75, 80, 90, 100, 110 (15 lbs. maximum difference)
NOVICE 12U	BORN 2009–2010	65, 70, 75, 80, 85, 90, 95, 100, 110, 120, 130, 145 (20 lbs maximum difference)
SCHOOLGIRL 14U	BORN 2007–2008	72, 79, 85*, 92*, 97*, 101, 105*, 110, 119, 127*, 136*, 145*, 185* (*UWW Qualifying SB Pan American Weight Classes)
CADET 16U	BORN 2005–2006	94, 100, 106, 112, 117, 122, 127, 132, 138, 144, 152, 164, 180, 200
USA JUNIOR	BORN 9/1/2001 and after plus enrolled in grades 9-12	100, 106, 112, 117, 122, 127, 132, 138, 144, 152, 164, 180, 200, 225
UNIVERSITY	BORN 1997–2002 And must have graduated from high school, and be at least 17 years old but less than 28 years old on 1-1-2020	105.75, 116.8, 121.25, 127.9, 132.3, 138.75, 152.1, 165.3
SENIOR	BORN 1992–2001 or before	105.75, 116.8, 121.25, 127.9, 132.3, 138.75, 152.1, 165.3

USA Wrestling does not include the Pee-Wee or Bantam age divisions at any regional or national event.

At the state level only, weight classes will be added for Pee-Wee through Novice age division wrestlers weighing heavier than the listed weights. **ISWA will adjust weight classes accordingly at the state level to accommodate wrestlers.**

2021 ISWA ELEMENTARY DUAL TEAM STATE CHAMPIONSHIP – WEIGHT CLASSES

43, 49, 54, 59, 63, 68, 73, 78, 84, 90, 98, 105, 115, 130, HWT (up to 175)

2021 ISWA MIDDLE SCHOOL DUAL TEAM STATE CHAMPIONSHIP – WEIGHT CLASSES

75, 80, 85, 90, 95, 102, 110, 117, 125, 132, 140, 150, 160, 175, 195, 220, 275

Wrestlers may move up one weight class.

DURATION OF BOUTS

FOLKSTYLE BOUTS			FREESTYLE & GRECO-ROMAN BOUTS		
AGE DIVISIONS	# OF PERIODS	LENGTH OF PERIODS	AGE DIVISIONS	# OF PERIODS	LENGTH OF PERIODS
PEE-WEE 6U	3	Championship & Consolation: 1 minute	PEE-WEE 6U	2	2 minute periods 30 second rest between periods
BANTAM 8U	3	Championship & Consolation: 1 minute	BANTAM 8U	2	2 minute periods 30 second rest between periods
INTERMEDIATE 10U	3	Championship & Consolation: 1 minute	INTERMEDIATE 10U	2	2 minute periods 30 second rest between periods
NOVICE 12U	3	Championship: 1 - 1 minute & 2 - 1:30 minutes Consolation: 3 - 1 minute	NOVICE 12U	2	2 minute periods 30 second rest between periods
SCHOOLBOY/GIRL 14U	3	Championship: 1 - 1 minute & 2 - 1:30 minutes Consolation: 3 - 1 minute	SCHOOLBOY/GIRL 14U	2	2 minute periods 30 second rest between periods
CADET 16U	3	Championship: 3 - 2 minutes Consolation: 1 - 1 minute & 2 - 2 minutes	CADET 16U	2	3 minute periods 30 second rest between periods
JUNIOR	3	Championship: 3 - 2 minutes Consolation: 1 - 1 minute & 2 - 2 minutes	JUNIOR	2	3 minute periods 30 second rest between periods
UNIVERSITY	3	Championship: 1 - 1 minute & 2 - 1:30 minutes Consolation: 3 - 1 minute	UNIVERSITY	2	3 minute periods 30 second rest between periods
SENIOR	3	Championship: 1 - 1 minute & 2 - 1:30 minutes Consolation: 3 - 1 minute	SENIOR	2	3 minute periods 30 second rest between periods
VETERAN	3	Championship: 1 - 1 minute & 2 - 1:30 minutes Consolation: 3 - 1 minute	VETERAN	2	3 minute periods 30 second rest between periods

CLASSIFICATION POINTS

FOLKSTYLE BOUTS					FREESTYLE & GRECO-ROMAN BOUTS				
RESULTS BY MATCH	POINTS		RECORDING CODES		RESULTS BY MATCH	POINTS		RECORDING CODES	
	WINNER	LOSER	WINNER	LOSER		WINNER	LOSER	WINNER	LOSER
Victory by Fall	6	0	Time	LF	Victory by Fall	5	0	Time	LF
Technical Superiority - 15 pts	5	0	Score	Reverse Score	Technical Superiority 10+ pts	4	0	Score	Reverse Score
Major Decision - 8-14 pts	4	0	Score	Reverse Score	Technical Superiority Loser scores	4	1	Score	Reverse Score
Decision - 1-7 pts	3	0	Score	Reverse Score	Decision 1-9 pts - Loser no score	3	0	Score	Reverse Score
Disqualification	6	0	WBD	DQ	Decision 1-9 pts - Loser scores	3	1	Score	Reverse Score
Double Disqualification	0	0	DDQ	DDQ	Forfeit	5	0	WBF	FORF
Forfeit	6	0	WBF	FORF	Injury Default	5	0	WBI	INJ
Injury Default	6	0	WBI	INJ	Disqualification - Misconduct	5	0	WBQ	DQM
					Double Disqualification	0	0	DDQ	DDQ



2020-2021 RULES & REGULATIONS FOR ALL SANCTIONED EVENTS

1. Tournaments hosting an ISWA/USA Wrestling event must require all competitors to hold a current USA Wrestling competitor's membership card.
2. A current USA Wrestling competitor's card or proof of purchase must be presented when registering. Cards are available at www.usawmembership.com. USA athlete cards are required to have age verification in order to compete at all ISWA State Final Events
3. 6U/Pee-Wee, 8U/Bantam, 10U/Intermediate, 12U/Novice and 14U/Schoolboy wrestlers **CANNOT** move up an age division. 16U/Cadet age division wrestlers who are in high school may move up to the Junior age division. Senior age division wrestlers **CANNOT** move up to Veteran. However, persons qualified for the Veteran age division may wrestle in the Senior age division.
4. Weigh-ins for all age divisions will consist of 1 weigh-in and 1 immediate challenge. Wrestlers will not be allowed to leave the weigh-in room. A wrestler may move up one weight class from the weight in which he/she qualified to compete in at the time of weigh-in. Once a wrestler has weighed in and challenged a different weight class, it's a final weigh-in and should be recorded. Wrestlers are only allowed to wrestle in one weight class. All 8th-grade 16U/Cadets CANNOT move up and wrestle a high school Junior.
5. Entry forms must include a participant's waiver and release, as well as a signed consent (by a parent or guardian if they are under 18) for emergency medical treatment. Visit www.iswa.com, under **Tournaments/Entry Form**.
6. Out-of-State wrestlers may compete in ISWA open events and preliminary tournaments provided they are duly registered with USA Wrestling. The ISWA STATE FINALS Series is open to INDIANA RESIDENTS ONLY!! Under no circumstances will out-of-state wrestlers be allowed to participate in any ISWA State Final. In case of a protest, full-time Indiana residency must be verified to the Tournament Committee. Indiana school enrollment will determine residency, if other verification is unavailable or not satisfactory. The wrestler must then produce a copy of their report card or school ID to participate.
7. Mouthguards and headgear are required during competition at ISWA sanctioned events for wrestlers participating in 6U/Pee-Wee through 14U/Schoolboy/girl age divisions. Non-compliance may result in elimination from the tournament.
8. 6U/Pee-Wee age division wrestlers will be governed by the same rules as 8U/Bantam through 14U/Schoolboy/girl. All modifications imposed by USA Wrestling for 8U/Bantam through 14U/Schoolboy/girl age divisions will also apply to 6U/Pee-Wee age division wrestlers.
9. A wrestler must be allowed 15 minutes between bouts to rest before his/her next competition.
10. Athletes must weigh-in wearing a competition legal uniform.
11. With the exception of ISWA State Finals, weight classes may be split at the discretion of the local Tournament Host.
12. Certified Athletic Trainers will be on-site to conduct skin checks during weigh-ins at all ISWA State Final Events. All decisions by the trainers regarding participation will be final! Details can be found on www.iswa.com under **Tournament/Sports Medicine**. Sports Medicine info includes Skin Check details and a Physician's Release for Wrestlers. SKIN CHECKS ARE REQUIRED AT ALL ISWA/USAW SANCTIONED EVENTS within 24 hours of competition.
13. All tournaments will be required to have the following: Tournament Director, Head Mat Official, Head Pairing Official and a Medical Trainer.

FOLKSTYLE-SPECIFIC MODIFICATIONS & RECOMMENDATIONS

NFHS NFHS Rules will apply with the following modifications:

Rules will apply with the following modifications:

1. All corrections of errors MUST be settled with the official/head official **at matside** using the guidelines per NFHS Rules. **No judgment issued will be reviewed.**
2. The ISWA recommends **Line Bracketing** be used at all Folkstyle events where there are 4 or more in a weight class. **Vertical Pairing** is recommended for 3 or less. Copies of bracket sheets, flow charts, etc. are available to print on ISWA website: **iswa.com under Membership/Pairing Officials.**

FREESTYLE OR GRECO-ROMAN-SPECIFIC MODIFICATIONS & RECOMMENDATIONS

As modified by USA Wrestling, the UWW rules in the "International Rule Book" are to be followed at Freestyle and Greco-Roman events.

1. The **Vertical Pairing System** with positive points or **Line Bracketing** may be used at events. Copies of wall charts, worksheets, flow charts, etc. are available to print at **iswa.com under Membership/Pairing Officials.**
2. The ISWA strongly suggests a **Blind Draw** be used at all local tournaments.

ONLINE RESOURCES

Please revisit these websites often for the most current information available to keep your club and visiting clubs/members safe:

USAW Insurance Information

www.teamusa.org/usa-wrestling/membership/insurance-information

*Please note there is no liability coverage for wrestling activities held at a home or residential dwelling.

Current Club Organizer Guide & Insurance Information

www.themat.com

SafeSport Information

www.teamusa.org/usa-wrestling/membership/safesport-program

CDC COVID-19 Considerations for Youth Sports

www.cdc.gov/coronavirus/2019-ncov/community/schools-childcare/youth-sports.html

Indiana State Department of Health

www.coronavirus.in.gov

*Find contact information for your local county health department at www.in.gov/isdh.



ISWA

ISWA Policy Reminders & Updates

IMPORTANT ISWA POLICIES TO NOTE FOR 2021



ISWA COACHING BAND: All coaches who wish to gain matside access during any ISWA State Events must obtain an ISWA coaching band, which requires a printed USA Wrestling Leader membership card, photo ID, and a Copper Level Certification (or higher). You can now upload your photo and add it to your membership card.



COACHES CLINICS: Attention All Coaches! Copper and Bronze Courses are NOW ONLINE at www.usawmembership.com. You must hold a current USA Wrestling Leader membership card. (**NOTE:** SafeSport certification and background check are required to renew Wrestling Leader Membership. Coaches certified with SafeSport prior to September 2020 must complete a SafeSport Refresher Course.)



WEIGH-INS: All ISWA sanctioned tournaments are required to hold weigh-ins. Safety of the athletes is of the utmost importance. To ensure each athlete will wrestle an athlete of like-size, athletes must weigh in through one of many different ways: on site, satellite (off site), or faxed weigh-ins. This integral aspect of wrestling is included in the rules set forth by the ISWA for all sanctioned events.



FREESTYLE STATE FINALS QUALIFICATION: Details on 2021 Freestyle State Qualifier Events can be found online at www.iswa.com/2021FreestyleGrecoStateFinals

ATTENTION CADETS & JUNIORS: CADETS/16U AND JUNIORS TURNING 17 YEARS OLD THIS SEASON WILL BE REQUIRED TO COMPLETE SAFE SPORT BEFORE RENEWING ATHLETE MEMBERSHIPS.



NEW INFORMATION FOR ALL CLUBS: 2020/2021 CLUB CHARTERS WILL BE REQUIRED TO DISTRIBUTE SPECIFIC INFORMATION PROVIDED BY USAW TO ALL CLUB MEMBERS. EACH CLUB WILL BE RESPONSIBLE FOR COMMUNICATION TO MEMBERS. USAW WILL REQUIRE DOCUMENTATION OF THIS COMMUNICATION IN ORDER TO RENEW THE 2021/2022 CLUB CHARTER.

(**NOTE:** USAW NOW PROVIDES CLUBS A MESSAGING SERVICE, THROUGH THE USAW MEMBERSHIP WEBSITE, TO EMAIL MEMBERS. IT'S THE BEST RESOURCE FOR CLUBS TO ENSURE, DURING AN USAW AUDIT, AN EMAIL WAS PROVIDED TO CLUB MEMBERS AND ACCESS TO THE ONLINE SAFE SPORT PARENT GUIDE. THIS WILL BE A REQUIREMENT FOR THE 2021-2022 SEASON.)



2021 National Team EVENT SCHEDULE



Most national event dates currently remain TBD.

USAW GIRLS FOLK NATIONAL/DUALS @COLORADO SPRINGS, CO – TBD

WOMEN'S TEAM LEADER:

JASON DELOIS (317) 201-8700
indianagirlswrestling@gmail.com

HEARTLAND NATIONAL DUALS (INCLUDING GIRLS) @COUNCIL BLUFFS, IA – TBD

MS TEAM LEADER:

JASON MILLER (219) 730-9489
jmill1226.jm@gmail.com

ELEM. TEAM LEADER:

RYAN PARRISH (317) 213-8598
ryan@contenderswrestling.com

WOMEN'S TEAM LEADER:

JASON DELOIS (317) 201-8700
indianagirlswrestling@gmail.com

CENTRAL REGIONAL @FT WAYNE, IN – MAY 20-23, 2021

16U NATL. DUALS @LOVES PARK, IL – TBD

TEAM LEADER:

CORY GRAHAM (317) 908-2248
jamesjo328@gmail.com

14U NATL. DUALS @FRANKLIN, IN – TBD

TEAM LEADER:

STEVEN LIVINGSTON (812) 821-4878
slivingston@rbbschools.net

JUNIOR NATL. DUALS @TULSA, OK – TBD

TEAM LEADER:

ALEX JOHNS (812) 228-6694
alexjohns0925@gmail.com

12U, 14U, 16U, JR. TEAM LEADER:

JASON DELOIS (317) 201-8700
indianagirlswrestling@gmail.com

KIDS' NATIONALS @WISCONSIN DELLS, WI – TBD

TEAM LEADER:

WALT GRAY (812) 272-0170
wgray@mccsc.edu

16U/JR. USAW/USMC NATIONALS (INCLUDES GIRLS) @FARGO, ND – TBD

JR. TEAM LEADER:

BRADY EPPERT (317) 440-5504
eppert.ciawrestling@gmail.com

16U TEAM LEADER:

JAKE O'NEILL (317) 372-2992
oneillj@apaches.k12.in.us

16U/JR. WOMEN'S TEAM LEADER:

JASON DELOIS (317) 201-8700
indianagirlswrestling@gmail.com

Please visit www.iswa.com/teamindiana for more information about qualifications, pricing, camp details and event itinerary. Email any questions to Team Leader or ISWA at office@iswa.com.

2021 ISWA Elementary Dual Team



STATE CHAMPIONSHIPS
JANUARY 3, 2021

***EVERYTHING IS SUBJECT TO CHANGE!**

Please visit www.iswa.com/eventschedule for current updates. Questions? Contact office@iswa.com.

FRANKLIN COMMUNITY HIGH SCHOOL

2600 CUMBERLAND DR., FRANKLIN, IN 46131

REQUIREMENTS

- Ages Pre-K – 6th Grade only. (Must be born 2007 or after)
 - **Indiana Residents only!**
 - Each team must be a current ISWA Chartered Club in good standing.
 - Each wrestler must have a 2020-21 USA Wrestling Competitor's Card.
 - Each team will be limited to 23 participants.
 - All wrestlers appearing on your roster must be in Pre-K through 6th grade. Coaches will be required to provide a copy of the wrestler's USA Card and report card.
 - Folkstyle rules with 3 one-minute periods.
 - All other high school rules and guidelines apply.
 - Wrestlers will be required to wear head gear and mouth pieces.
 - The members of each team must attend school within the same school district of which the participating club is located. **No Exceptions!**
 - To help fill lineups and allow less-populated communities to be competitive, additional wild card wrestlers (those who do not attend a school within a community of which club is located) will be allowed. The number of wild card wrestlers allowed on each team is determined by a community's high school class according to the Indiana High School Wrestling Coaches Associations class system. Communities within an IHSWCA 1A wrestling class will be allowed 4 wild card wrestlers. Communities within an IHSWCA 2A class will be allowed 3 wild card wrestlers. Communities within an IHSWCA 3A class will be allowed 2 wild card wrestlers. (Entry form, team roster and list of schools within each class are available at iswa.com.)
 - No coolers in the gym!
- All weights will be rounded down to the nearest pound (tenths will not count).
 - If a competitor fails to make weight during team weigh-ins, he/she will be allowed one immediate challenge. The wrestler will not be allowed to leave the weigh-in room.
 - Wrestlers must weigh-in wearing their competition singlet.

COMPETITION SCHEDULE (EST)

- Doors open: 7am on Sunday morning
- Coaches Meeting: 8:30am
- Parade of Teams: 8:45am
- Wrestling Begins: 9:15am

TEAM ENTRIES

- Entry opened Nov. 2, 2020 (Please note entry deadline for this popular tournament, which filled quickly this year.)
- Entry into this event is based on a first come, first serve basis.
- 2 Divisions:
 - Large Team Division:** 3A Schools. Limited to the first 16 3A schools to submit entry forms and payment.
 - Small Team Division:** 2A & 1A Schools. Limited to the first 8 2A & 1A schools to submit entry forms and payment.
- If less than the allotted teams in either division are entered, a club may enter a second team.
- If a division is not full, only an even number of teams will be accepted.
- Team rosters are due on **TrackWrestling** by Friday, Jan. 1, 2021! Changes can be made at weigh-ins if needed.
- If team rosters are **NOT** completed by Jan. 1 deadline, a TBD late fee will be charged.
- All forms **MUST** be submitted at weigh-ins. Teams **WILL NOT** be permitted to weigh-in unless all forms are submitted. Weigh-ins will **NOT** be extended.

WEIGHT CLASSES (15 TOTAL)

- 43, 49, 54, 59, 63, 68, 73, 78, 84, 90, 98, 105, 115, 130, HWT (up to 175)
- Wrestlers may move up one weight class

ONSITE WEIGH-INS

- Sunday: 7:15am - 7:45am (EST)
- Teams will weigh-in in order of arrival. All team members must be present at the start of weigh-ins.

PROTESTS

Any club requesting to file a protest, **MUST** pay a TBD protest fee. Fee **ONLY** refunded if protest upheld.

ENTRY FEE

TBD. Entry fee includes wrestler passes & 4 coaches/volunteer floor passes per team.

- Coaches wristbands will only be issued to individuals who hold a minimum of USAW/NCEP Copper Certification and active USAW Wrestling Leader membership.
- All coaches/volunteers names are due to the ISWA office with the paid entry.
- Scorekeepers may not sit at the score table or be on the mat.
- Only coaches listed on a team's entry form will be admitted free of charge. Each team's coaches/volunteers will need to show their credentials at the door to receive a coach's band. Credentials include: USAW Wrestling Leader Card, Copper Certification (or higher) and photo ID.

ADMISSION

Please Note: Prices TBD. Online ticketing very likely with COVID attendance restrictions.

FORMAT

Depends on number of teams entered in the event. We try to offer all teams a minimum of 4 dual meets for the day.

AWARDS

Custom trophies presented to top 3 teams in each division. Custom medals presented to all members of the top 3 teams in each division. All members of the championship teams (in each division) will also receive a custom T-Shirt.

TEAM DRAW

Top 4 teams from the previous year will be separated in pools (if possible) and then a blind draw will be done by the computer.

HOTEL ARRANGEMENTS

Official ISWA Event Hotel Reservation Link:
<https://hotels.sitesearchllc.net/group-event?id=44698>

ISWA PHOTO SUBMISSIONS!

We love seeing and sharing all of the candid pictures taken by ISWA coaches, parents, volunteers and athletes at wrestling events throughout the season! **Tag ISWA Wrestling on your wrestling Facebook posts**—or simply email your best photos from the 2020-2021 season to Office@ISWA.com. We may feature your pictures in next year's ISWA Member Guide!

Also check us out on Instagram and Twitter.



ISWAUSAW



ISWAUSAW



ISWAUSAW

**FOLLOW US ON FACEBOOK AND
TAG US IN YOUR WRESTLING POSTS!**

2020

Photo Contest Winner

Thank you to the nearly 20 people who submitted wrestling photos to feature in this year's Member Guide! With such an abbreviated season and limited results, we appreciate your efforts to help us highlight our state's wrestlers who did get to compete in the 2019-2020 season.

We picked our favorite photo entries and opened voting to our ISWA members and social media followers to pick this year's winner.

CONGRATULATIONS TO DEIDRE ADAMS

You're our 2020 ISWA Photo Contest Winner.

Winner receives a gift card donated by Contenders Wrestling Club.

**Photos Submitted by:**

Sierra Crafton
Nikki Keller
Cory Givens
Deidre Adams

Jonah Odum
Juan Maldonado
Sarah Simpson-Bell
Blake Wolf

Gloria Cloud
Kevin Huddleston
Maria Adams
Ashley Johnson

Andrew Nedelsky
Tom Gangwer
Kevin Wester
Jennifer Sanders

Amy Woodall

2021 ISWA Middle School Dual Team

STATE CHAMPIONSHIPS | FEBRUARY 7, 2021



***EVERYTHING IS SUBJECT TO CHANGE!**

Please visit www.iswa.com/eventschedule for current updates. Questions? Contact office@iswa.com.

CARMEL HIGH SCHOOL

502 E. MAIN STREET, CARMEL, IN 46032

REQUIREMENTS

- 6th-8th Grade only. (Must be born 2005 or after)
- Indiana Residents only!
- Each team must be a current ISWA Chartered Club in good standing.
- Each wrestler must have a 2020-21 USA Wrestling Competitor's Card.
- Each team will be limited to 23 participants.
- All wrestlers appearing on your roster must be in 6th-8th grade. Coaches will be required to provide a copy of the wrestler's birth certificate and report card, or signed roster from the school corporation with a signature from the school corporation administration.
- Folkstyle rules with 1 minute, 1:30 periods.
- All other high school rules and guidelines apply.
- Wrestlers will be required to wear head gear.
- The members of each team must attend middle school within the same school district of which the participating club is located. **NO EXCEPTIONS!**
- No coolers in the gym!

WEIGHT CLASSES (17 TOTAL)

- 75, 80, 85, 90, 95, 102, 110, 117, 125, 132, 140, 150, 160, 175, 195, 220, 275
- Wrestlers may move up one weight class

ONSITE WEIGH-INS

- Sunday: 9:00am - 9:30am (EST)
- Teams will weigh-in in order of arrival. All team members must be present at the start of weigh-ins.
- All weights will be rounded down to the nearest pound (tenths will not count).
- If a competitor fails to make weight during team weigh-ins, he/she will be allowed one immediate challenge. The wrestler will not be allowed to leave the weigh-in room.
- Wrestlers must weigh-in wearing their competition singlet.

COMPETITION SCHEDULE (EST)

- Doors open: 8:00am on Sunday morning
- Coaches meeting: 9:45am
- Parade of Teams: 10:00am
- Wrestling begins: 10:15am

TEAM ENTRIES

- Entry opens January 4th, 2021 (Please note entry deadline for this popular tournament)

- Entry into this event is based on a first come, first serve basis.
- A maximum of 16 teams will be allowed.
- Team rosters are due on TrackWrestling by Friday, January 29, 2021. Changes can be made at weigh-ins if needed.
- If team rosters are **NOT** completed by the January 29, 2021 deadline, a \$50 late fee will be charged.
- All forms **MUST** be submitted at weigh-ins. Teams **WILL NOT** be permitted to weigh-in unless all forms are submitted. Weigh-ins will **NOT** be extended.

PROTESTS

Any club requesting to file a protest, **MUST** pay a \$150 protest fee. Fee is **ONLY** refunded if protest upheld.

ENTRY FEE

Team entry fees TBD. Entry fee includes wrestler passes & 4 coaches/volunteer floor passes per team.

- Coaches wristbands will only be issued to individuals who hold a minimum of USAW/NCEP Copper Certification and active USAW Wrestling Leader membership.
- All coaches/volunteers names are due to the ISWA office with the paid entry.
- Scorekeepers may not sit at the score table or be on the mat.
- Only coaches listed on a team's entry form will be admitted free of charge. Each team's coaches/volunteers will need to show their credentials at the door to receive a coach's band. Credentials include: USAW Wrestling Leader Card, Copper Certification (or higher) and photo ID.

ADMISSION

Please Note: Prices TBD. Online ticketing very likely with COVID attendance restrictions.

AWARDS

Custom trophies presented to top 3 teams. Custom medals presented to all members of the top 3 teams in each division. All members of the championship teams (in each division) will also receive a custom T-Shirt.

HOTEL ARRANGEMENTS

Official ISWA Event Hotel Reservation Link: <https://hotels.sitesearchllc.net/group-event?id=44699>

2021 ISWA Folkstyle State Finals



MARCH 5-7, 2021

***EVERYTHING IS SUBJECT TO CHANGE!**

Please visit www.iswa.com/eventschedule for current updates. Questions? Contact office@iswa.com.

WARREN CENTRAL HIGH SCHOOL

9500 E. 16TH ST., INDIANAPOLIS, IN 46229



I-70 & Post Rd. exit, Go South on Post Rd. to 18th St., Turn left @ stoplight with the High School sign, Turn left @ stop sign to Field House parking lot.

Weigh-ins: Door #25. Doors open at 5:30pm. No line before 4pm due to school in session. Enter **Door #14 ONLY** for competition!

FOLKSTYLE WRESTLING SCHEDULE (EST)

Saturday: 8am	16U & Juniors
Saturday: 2pm	Intermediate (10U), University Senior & Veteran
Sunday: 8am	PeeWee (6U), Bantam (8U), Novice (12U), Schooboy/girl (14U), University Senior & Veterans and Women & Remaining Cadets (16U)

USA WRESTLING COMPETITOR'S CARD

A 2020-2021 USA Wrestling Competitor's Card is required to participate in this event. Please purchase your card online at iswa.com prior to registering.

PRE-REGISTRATION: PRICE TBD

(credit cards/debit cards only)

All wrestlers are strongly encouraged to pre-register and pay online for this event at: trackwrestling.com.

PRE-REGISTRATION CLOSES at 9:59pm ON THURSDAY, MARCH 4 (EST). NO EXCEPTIONS! Pre-register by Sunday, Feb. 28, to have your name included on back of event shirt.

WALK-INS: TBD

(cash only) Walk-ins remain TBD.

WEIGH-INS

* Enter Door - **Door #25. No line before 4pm due to school in session. Doors open at 5:30pm**
On-site weigh-ins only! Wrestlers are **REQUIRED** to have a **PRINTED USAW** card in hand to weigh-in. **NO CELL PHONES** will be allowed in the weigh-in area. Weigh-in times are as follows:

Friday, March 5: 6:30pm-9pm (EST)
Intermediate (10U),
Cadet (16U), Junior,

University, Senior
and Veteran

Saturday, March 6: 6:30pm-9pm (EST)
PeeWee (6U), Bantam
(8U), Novice (12U),
Schooboy/girl (14U)
& all Women

All weigh-ins will consist of (1) weigh-in and (1) immediate challenge. Wrestlers will not be allowed to leave the weigh-in area. The ISWA does not charge for adjusting weight classes after you register. You are free to adjust your weight class at any time, even at weigh-ins. All wrestlers must weigh-in wearing a competition uniform. (Singlet or two-piece uniform as specified by the NFHS guidelines)

SKIN CHECKS

Upon arrival, wrestlers will proceed directly to skin checks and weigh-ins. Certified Athletic Trainers will be on site to conduct skin checks prior to weigh-ins. All decisions by the trainers regarding participation will be final! (For details, go to iswa.com and select **Sports Medicine** under the Tournaments tab) (Sports Medicine information includes Skin Check information and a Physician's Release for Wrestlers.)

SEPARATION CRITERIA

Folkstyle State place winners **ONLY!** If you've placed 1st thru 4th within the past two years, you will still be separated. Separation will be specific to Folkstyle only. **Note:** Wrestlers will be required to indicate their placement, in the dropdown menu provided, when they pre-register for each state event at trackwrestling.com.

SPECTATOR ALL-EVENT PASS

Please Note: Prices TBD. Online ticketing very likely with COVID attendance restrictions.

ADMISSION

Please Note: Prices TBD. Online ticketing very likely with COVID attendance restrictions.

AWARDS

Custom awards will be presented to the top 8 finishers in each weight class. First-place finishers will also receive a Championship T-Shirt.

PAIRING

Line Bracketing will be used.

PLACEMENT MATCHES

Placement matches will be wrestled, with a formal award presentation for each weight class held at the conclusion.

TEAM COMPETITION

Limited to 2020-2021 ISWA member clubs only! Custom plaques will be presented to the 1st, 2nd and 3rd place clubs in the Small, Medium, and Large Club categories.

For Academy Clubs (as defined by the ISWA Board of Directors), only 1st place receives a plaque.

Teams must consist of 8 or more wrestlers in order to enter team competition. Team points calculated using **Track Wrestling**. Points will be awarded for both advancement and placement. Wrestlers must select their team from the Club dropdown menu when registering on trackwrestling.com. No changes will be made at the tournament.

Points will be awarded for both advancement and placement.

The ISWA encourages 8-10 volunteers per club to work scoring tables. Volunteers earn 12 club team points toward the team competition score, a volunteer shirt, and food & drinks (for volunteers who work all day). **Note:** Send an email to office@iswa.com one week prior to the state event for a "Club Volunteer Form" in order to receive the 12 team points and submit shirt sizes.

Tournament Staff Director Roby Webster webstercows@aol.com;
765-918-3623

RESIDENCY POLICY

This state competition is for Indiana residents only! Under no circumstances will out-of-state wrestlers be allowed to participate. In case of a protest, full-time Indiana residency must be verified. Indiana school enrollment will determine residency, if other verification is unavailable or not satisfactory. The wrestler will then be required to produce a copy of a recent report card or school ID to participate.

COACHES PASS

A Coaches wristband is required to be matside to coach your wrestler. Coaches wristbands will only be issued to coaches who hold a current USA Wrestling Leader Card and are a minimum USAW/NCEP Copper Certified Coach. All coaches must report to a designated site and produce their USA Wrestling Leader Card, Copper or Bronze Coaches Card, and picture ID. You will be fitted with a wristband at that time. Do not take it off! You will be issued only one wristband.

Coaches must be prepared to pick up their band at the following times (EST):

Friday: 6:30pm-9pm

Saturday: 7am-9am 1pm-3pm 6:30pm-9pm

Sunday: 7am-9am

THE ISWA FOLKSTYLE STATE FINALS SERVES AS A QUALIFIER FOR THE FOLLOWING EVENT

The 2021 USA Wrestling Folkstyle National Championships.

You must wrestle in the ISWA Folkstyle State Finals in order to qualify for this event. Qualification is by participation only. All wrestlers participating in this event will qualify. The ISWA will provide USA Wrestling with a list of all wrestlers qualified to participate at nationals. **Note:** Pee-Wee wrestlers are not eligible to participate in the Folkstyle Nationals.

HOTEL ARRANGEMENTS

Official ISWA Event Hotel Reservation Link: <https://hotels.sitesearchllc.net/group-event?id=44519>

WORSHIP SERVICE

A short non-denominational worship service will be conducted on the mat from 7:10am to 7:40am (EST) on Sunday morning.

VENDOR

3X Gear is our exclusive tournament vendor for all of this year's ISWA State Tournaments.



ISWA State Finals Table Help - All Styles GUIDELINES

1. Table help group can be 1, 2, 3, or 4 clubs that work the table together.
2. A total of 12 points can be earned per individual State Tournament.
3. The points will be split among the team(s) listed.
4. The group will be limited to 12 workers.
5. All workers must be in at least 5th grade.
6. All 5th grade workers must have at least one adult (high school age or older) worker at the table with them when working.
7. May have 2 high school workers working together.
8. No wrestler competing may work until the completion of their wrestling for that day.
9. Points will only be given if the required sheet is completed and turned in prior to 4pm on the Wednesday before the state tournament.
10. Points will be given once requirements have been met.
11. Must work the entire event until released by tournament staff.
12. Each group is required to alternate relief as needed, including bathroom and lunch breaks.
13. Each worker will receive an ISWA Volunteer T-Shirt and a meal ticket for the hospitality room.
14. You will only be given the number of meal tickets and T-Shirts listed on your registration sheet. All information must be signed off by the team's club president or head coach as listed on their ISWA club charter.
15. LIMITED to the first 24 teams (Folkstyle) and 13 teams (Freestyle and Greco) that submit a completed Table Help Registration Form to the ISWA office at office@ISWA.com

FOLKSTYLE OFFICIALS STATE FINALS

The 2021 Folkstyle State Finals will be held over a single weekend this season:

**March 5-7, 2021 | PeeWee-Veteran Divisions
Warren Central High School**

Once again, the ISWA will contract with and pay IHSA licensed officials at both Folkstyle State Finals in an effort to produce the highest quality event and environment for the kids.

2021 ISWA

Women's Folkstyle State Finals



***EVERYTHING IS SUBJECT TO CHANGE!**

Please visit www.iswa.com/eventschedule
for current updates. Questions?
Contact office@iswa.com.

MARCH 5-7, 2021

WARREN CENTRAL HIGH SCHOOL

9500 E. 16TH ST., INDIANAPOLIS, IN 46229



I-70 & Post Rd. exit, Go South on Post Rd. to 18th St., Turn left @ stoplight with the High School sign, Turn left @ stop sign to Field House parking lot. **Weigh-ins:** Enter Door #14 ONLY for competition!

WOMEN'S FOLKSTYLE WRESTLING SCHEDULE (EST)

Wrestlers must report, ready to wrestle, at 8am on Sunday, March 7.

Sunday: 8am 6U, 8U, 10U, 14U & all Women's age groups

USA WRESTLING COMPETITOR'S CARD

A 2020-21 USA Wrestling Competitor's Card is required to participate in this event. Please purchase your card online at iswa.com or usawmembership.com prior to registering for this event.

PRE-REGISTRATION: PRICE TBD

(credit cards/debit cards only) All wrestlers are strongly encouraged to pre-register and pay online for this event at: trackwrestling.com. **PRE-REGISTRATION CLOSES** at 9:59pm on **THURSDAY, MARCH 4th (EST). NO EXCEPTIONS!** Pre-register by Sunday, Feb. 28 to have your name included on back of the event shirt.

WALK-INS: TBD

(cash only) Walk-ins remain TBD.

WEIGH-INS FOR ALL WOMEN'S AGE DIVISIONS

Saturday, March 6: 6:30pm-9:00pm (EST)
For all Women's age divisions

- For any women who weighed-in and competed in the men's tournament, that weigh-in will apply to the women's tournament.
- All wrestlers **must** weigh-in wearing a competition uniform. (Women's singlet or two-piece uniform as specified by the NFHS guidelines).
- The ISWA does not charge for adjusting weight classes after you register. You are free to adjust your weight class at any time, even at weigh-ins.

SKIN CHECKS

Upon arrival, wrestlers will proceed directly to skin checks and weigh-ins. Certified Athletic Trainers will be on site to conduct skin checks prior to weigh-ins. All decisions by the trainers

regarding participation will be final! (For details, go to iswa.com and select **Tournament < Sports Medicine** from the top menu. Sports Medicine information includes Skin Check info and a Physician's Release for Wrestlers.)

SEPARATION CRITERIA

Folkstyle State place winners ONLY! If you placed 1st through 4th within the past two years, you will still be separated. Separation will be specific to Folkstyle only. Note: Wrestlers will be required to indicate their placement, in the dropdown menu provided, when pre-registering for each state event at trackwrestling.com.

SPECTATOR ALL EVENT PASS

Online ticketing very likely with COVID attendance restrictions.

ADMISSION

Please Note: Prices TBD. Online ticketing very likely with COVID attendance restrictions.

AWARDS

Custom awards will be presented to the top 8 places in each weight class. First-place finishers will also receive a Championship T-Shirt.

PAIRING

Line bracketing will be used.

PLACEMENT MATCHES

Placement matches will be wrestled, with a formal award presentation for each weight class held at the conclusion of the placement matches.

RESIDENCY POLICY

This state competition is for Indiana residents **ONLY!** Under no circumstances will out-of-state wrestlers be allowed to participate. In case of a protest, full-time Indiana residency must be verified. Indiana school enrollment will determine residency, if other verification is unavailable or not satisfactory. The wrestler will then be required to produce a copy of her report card or school ID to participate.

COACHES PASS

A Coaches wristband is required to be matside to coach your wrestler. **Coaches wristbands**

will only be issued to those individuals who hold a current USA Wrestling Leader Card AND are, at a minimum, a USAW/NCEP Copper Certified Coach. All coaches must report to a designated site and produce their USA Wrestling Coaches Card, Copper/Bronze Card and a picture ID. Note: Coaches can now upload a photo onto their USAW Wrestling Leader Card profile, which is a timesaver at the Coaches band table. You will be fitted with a wristband at that time. Do not take it off! You will only be issued one wristband.

Coaches must be prepared to pick up their band at the following times (EST):

Friday: 6:30pm - 9pm
Saturday: 7am - 9am; 1pm - 3pm; 6:30pm - 9pm
Sunday: 7am - 9am

THE ISWA WOMEN'S FOLKSTYLE STATE FINALS SERVES AS A QUALIFIER FOR THE FOLLOWING EVENT:

The 2021 USA Wrestling Folkstyle National Championships. You must wrestle in the ISWA Folkstyle State Finals in order to qualify for this event. Qualification is by participation only. All wrestlers participating in this event will qualify. The ISWA will provide USA Wrestling with a list of all wrestlers qualified to participate at nationals.

Note: PeeWee wrestlers are not eligible to participate in the Folkstyle Nationals.

HOTEL ARRANGEMENTS

Official ISWA Event Hotel Reservation Link: <https://hotels.sitesearchllc.net/group-event?id=44519>

WORSHIP SERVICE

A short non-denominational worship service will be conducted on the mat from 7:10am to 7:40am (EST) on Sunday morning.

VENDOR

3X Gear is our exclusive tournament vendor for all of this year's ISWA State Tournaments.

2021 ISWA

Freestyle & Greco-Roman State Finals

***EVERYTHING IS SUBJECT TO CHANGE!**

Please visit www.iswa.com/eventschedule
for current updates. Questions?
Contact office@iswa.com.

APRIL 30 - MAY 2, 2021



AVON HIGH SCHOOL

7575 E COUNTY RD. 150 SOUTH, AVON, INDIANA 46123



From I-465, Exit to US 36 West (Rockville Rd.), South on Dan Jones
to County Rd. 150 South (Oriole Way) - Enter Door 33 for Weigh-ins.

PRIOR QUALIFICATION IS REQUIRED TO PARTICIPATE IN FREESTYLE FINALS:

Indiana tournaments only!

All Freestyle State Finals participants must compete in a minimum of two local-level Freestyle tournaments in order to compete at the State Freestyle Event. Visit iswa.com -Tournaments for more details. Cadets & Juniors may substitute one of the exceptions outlined in the competitor's guidelines.

SATURDAY WRESTLING SCHEDULE:

Freestyle wrestlers must report, ready to wrestle, at the following times (EST):

8am	6U, 8U, 16U
11:30am	14U, Junior, Senior, Veteran
2:30pm	10U, 12U

SUNDAY WRESTLING SCHEDULE: GRECO-ROMAN & GIRLS' FREESTYLE

Wrestlers must report, ready to wrestle, at the following times (EST)

9am	8U, 10U, 12U, 16U
10am	All Girls' Divisions - Freestyle
12pm	14U - Junior - Senior - Veteran

Both Freestyle and Greco will finish in one day. Cadets (who are in high school) will be allowed to wrestle in both the Cadet and Junior competition, for both Greco and Freestyle, provided they pre-register and pay the additional entry fee.

USA WRESTLING COMPETITOR'S CARD

A 2020-2021 USAW Competitor's Card is required for all Pee-Wee (6U) thru Junior wrestlers to participate in this event. Please purchase your card at usawmembership.com prior to the event. An Open License is required for all Senior and Veteran wrestlers (born before 9/1/2000), and can also be purchased through the USA Wrestling website.

ADMISSION

Please Note: Prices TBD. Online ticketing very likely with COVID attendance restrictions.

PRE-REGISTRATION: PRICES TBD

Wrestlers who plan to participate in both Freestyle & Greco must pre-register and pay online in order to receive the discounted price. All are strongly encouraged to pre-register and pay online for each event at trackwrestling.com.

PRE-REGISTRATION FOR BOTH EVENTS WILL CLOSE ON THURSDAY, APRIL 29 @ 9:59pm (EST). NO EXCEPTIONS!

WALK-INS: TBD

(cash only) Walk-ins remain TBD.

WEIGH-INS

On-site weigh-ins **ONLY!** Wrestlers competing in both Freestyle and Greco can weigh in one time for both styles. Wrestlers are **REQUIRED** to have a PRINTED USAW card in hand to weigh-in. NO CELL PHONES will be allowed in the weigh-in area.

Scheduled Weigh-in Times (EST):

FRIDAY, APRIL 30: 6:30pm-9pm
Pee-Wee - Veteran

SUNDAY, MAY 2: 7am-7:30am
Greco-Only Wrestlers - All Divisions

SUNDAY, MAY 2: 7:30am-8am
Girls - All Divisions

Note: Girls participating in both FS on Saturday & Girls FS on Sunday may weigh-in on Friday night for both events.

All weigh-ins will consist of (1) weigh-in and (1) immediate challenge. Wrestlers will not be allowed to leave the weigh-in area.

The ISWA does not charge for adjusting weight classes after you register. You are free to adjust your weight class at any time, even at weigh-ins.

All wrestlers must weigh-in wearing a competition singlet. (A singlet as specified by the USAW guidelines).

SKIN CHECKS

Upon arrival, wrestlers will proceed directly to skin checks and weigh-ins. Certified Athletic Trainers will be on site to conduct skin checks prior to weigh-ins. All decisions by the trainers regarding participation will be final! (For details, go to iswa.com and select **Sports Medicine** under the Tournaments tab)

PAIRING

Line Bracketing will be used. (Due to qualifications for the USA Wrestling Schoolboy Dual teams, wrestlebacks to determine a true 2nd place will be held for the Schoolboy/girl age division only.)

SEPARATION CRITERIA

Style Specific-Freestyle & Greco State place winners **ONLY!** 1st through 4th within the past two years will still be separated.

Note: Wrestlers will be required to indicate their placement, in the dropdown menu provided, when they pre-register for each state event at trackwrestling.com

SPECTATOR ALL-EVENT PASS

Please Note: Prices TBD. Online ticketing very likely with COVID attendance restrictions.

AWARDS

Freestyle Champions will receive a custom ISWA singlet courteous of **3X Gear**, a Champions T-Shirt & custom award. Greco Champions will receive a Championship T-Shirt & custom award. Athletes in each competition who finish 2nd thru 8th place will also receive a custom award.

PLACEMENT MATCHES

Placement matches will be wrestled, with a formal award presentation for each weight class held at the conclusion.

TEAM COMPETITION

Limited to 2020-2021 ISWA member clubs only! Custom plaques will be presented to the 1st,

2nd and 3rd place clubs in the Small, Medium, and Large Club categories.

For Academy Clubs (as defined by the ISWA Board of Directors), only 1st place receives a plaque.

Teams must consist of 8 or more wrestlers in order to enter team competition. Team points are calculated using Track Wrestling. Wrestlers must select their team from the Club dropdown menu when registering on trackwrestling.com. No changes will be made at the tournament.

Points will be awarded for both advancement and placement.

The ISWA encourages 8-10 volunteers per club to work scoring tables. Volunteers earn 12 club team points toward the team competition score, a volunteer shirt, and food & drinks (for volunteers who work all day). **Note:** Send an email to office@iswa.com one week prior to the state event for a "Club Volunteer Form" in order to receive the 12 team points and submit shirt sizes.

RESIDENCY POLICY

This state competition is for Indiana residents **ONLY!** Under no circumstances will out-of-state wrestlers be allowed to participate. In case of a protest, full-time Indiana residency

must be verified. Indiana school enrollment will determine residency, if other verification is unavailable or not satisfactory. The wrestler will then be required to produce a copy of a report card or school ID to participate.

COACHES PASS

A Coaches wristband is required to be matside to coach your wrestler. Coaches wristbands will only be issued to coaches who hold a current USA Wrestling Leader Card and are a minimum USAW/NCEP Copper Certified Coach. All coaches must report to a designated site and produce their USA Wrestling Leader Card, Copper or Bronze Coaches Card, and picture ID. You will be fitted with a wristband at that time. Do not take it off! You will be issued only one wristband.

COACHES: Be prepared to pick up your pass at the following times (EST):

Friday:	6:30pm–9pm
Saturday:	7am–9am 10:30am–12pm
	1:30pm–3pm
Sunday:	7:30am–9am
	11am–12pm

The ISWA State Finals serve as a qualifier for several national tournaments.

Visit iswa.com - Team IN for more details.

Detailed information on "Team Indiana" trips will be distributed to all who qualify.

All Paperwork **DEADLINES MUST BE MET** to guarantee a position on any of the teams!

HOTEL ARRANGEMENTS

Official ISWA Event Hotel Reservation Link: <https://hotels.sitesearchllc.net/group-event?id=44520>

*See Page 25 for the State Finals Table Help Guidelines—For All Styles.

WORSHIP SERVICE

A short non-denominational worship service will be conducted on the mat starting at 8:00am EST on Sunday morning.

2021 ISWA FREESTYLE STATE QUALIFIER LIST

The ISWA requires wrestlers to compete in a minimum of two qualifying events before registering for the 2021 ISWA Freestyle State Finals. Qualifying Freestyle & Folkstyle Events:

- FS-Jr Natl UWW
- Folk-Heartland Dual's
- FS-Flo Nationals
- Folk-USAW Folkstyle Nationals
- Folk-NHSCA HS Nationals
- FS-15U Freestyle World Team Qualifier
- FS-Western Regional's
- ANY ISWA/USAW Santioned Freestyle event hosted by local clubs around the state

These events can be found at www.themat.com or www.iswa.com under Tournaments - Event Schedule

2021 FREESTYLE/GRECO-ROMAN OFFICIALS CLINIC

MARCH 7, 2021 AT 1PM

Held at ISWA Office:

5715 Churchman Ave., Ste. L

Indianapolis, IN 46107



Keep in Mind

Club Folkstyle Officials – Each club is expected to have a representative Folkstyle Official (preferably IHSAA licensed) listed and on file with the ISWA office. Any one official may represent multiple clubs. If your club needs assistance achieving this goal, please contact your Section Folkstyle Referee.

2021 ISWA

Women's Freestyle State Finals



***EVERYTHING IS SUBJECT TO CHANGE!**

Please visit www.iswa.com/eventschedule for current updates. Questions? Contact office@iswa.com.

APRIL 30 - MAY 2, 2021

AVON HIGH SCHOOL

7575 E. COUNTY RD. 150 SOUTH, AVON, INDIANA 46123



From I-465, Exit to US 36 West (Rockville Rd.), South on Dan Jones to County Rd. 150 South (Oriole Way) - Enter Door 33 for Weigh-ins.

SUNDAY WRESTLING SCHEDULE: WOMEN'S FREESTYLE

Wrestlers must report, ready to wrestle, at the following times (EST):

Sunday: 10am All Girls' Divisions - Freestyle

Freestyle will finish in one day. Cadets (who are in high school) will be allowed to wrestle in both the Cadet and Junior competition, provided they pre-register and pay the additional entry fee.

USA WRESTLING COMPETITOR'S CARD

A 2020-2021 USAW Competitor's Card is required for all Pee-Wee (6U) thru Junior wrestlers to participate in this event. Please purchase your card at iswa.com prior to registering for this event.

PRE-REGISTRATION: PRICE TBD

(credit cards/debit cards only)

Any women wrestlers who plan to participate in both men's Freestyle & women's Freestyle, must pre-register and pay online in order to receive the discounted price. All are strongly encouraged to pre-register and pay online for each event at trackwrestling.com.

PRE-REGISTRATION FOR BOTH EVENTS WILL CLOSE ON THURSDAY, APRIL 29 @ 9:59PM (EST) NO EXCEPTIONS!

WALK-INS: TBD

(cash only) Walk-ins remain TBD.

WEIGH-INS

On-site weigh-ins only! Wrestlers competing in both Women's & Men's Freestyle can **weigh in one time for both tournaments**.

Weigh-in times are as follows (EST):

Friday, April 30 6:30pm-9pm
Pee-Wee - Veteran
Wrestlers - All Divisions

Sunday, May 2 7:30am-8am
Girls - All Divisions

- Girls participating in both FS on Saturday & Girls' FS on Sunday may weigh in on Friday night for both events.
- All weigh-ins will consist of (1) weigh-in and (1) immediate challenge. Wrestlers will not be allowed to leave the weigh-in area.
- The ISWA does not charge for adjusting weight classes after you register. You are free to adjust your weight class at any time, even at weigh-ins.
- All athletes **must** weigh-in wearing a competition singlet. (Women's singlet as specified by the NFHS guidelines)

SKIN CHECKS

Upon arrival, wrestlers will proceed directly to skin checks and weigh-ins. Certified Athletic Trainers will be on site to conduct skin checks prior to weigh-ins. All decisions by the trainers regarding participation will be final! (For details, go to iswa.com and select **Sports Medicine** under the Tournaments tab)

ADMISSION

Please Note: Prices TBD. Online ticketing very likely with COVID attendance restrictions.

AWARDS

Freestyle Champions receive a custom ISWA singlet courteous of 3X Gear, a Champions T-Shirt & custom award. Athletes in each competition who finish 2nd through 8th place will also receive a customized award.

PLACEMENT MATCHES

Placement matches will be wrestled, with a formal award presentation for each weight class held at the conclusion.

SEPARATION CRITERIA

Freestyle & Greco State place winners **ONLY!** If you've placed 1st through 4th within the past two years, you will still be separated. This is specific to each wrestling style. **Note:** Wrestlers will be required to indicate their

previous placement, in the dropdown menu provided, when pre-registering for each state event at trackwrestling.com.

SPECTATOR ALL-EVENT PASS

Please Note: Prices TBD. Online ticketing very likely with COVID attendance restrictions.

COACHES PASS

A Coaches wristband is required to be matside to coach your wrestler. Coaches wristbands will only be issued to coaches who hold a current USA Wrestling Leader Card and are a minimum USAW/NCEP Copper Certified Coach. All coaches must report to a designated site and produce their USA Wrestling Leader Card, Copper or Bronze Coaches Card, and picture ID. You will be fitted with a wristband at that time. Do not take it off! You will be issued only one wristband.

COACHES: Be prepared to pick up your pass at the following times (EST):

Friday: 6:30pm-9pm & all clinic attendees
Saturday: 7am-9am 10:30am-12pm 1:30pm-3pm
Sunday: 7:30am-9am 11am-12pm

THE ISWA STATE FINALS SERVES AS A QUALIFIER FOR THE FOLLOWING EVENTS

USA Wrestling 16U & Junior National Championships: The top 3 Cadets and Juniors in each style and weight class will be guaranteed a spot on the national team. Detailed information on Team Indiana trips will be distributed to all who qualify. All paperwork **DEADLINES MUST BE MET** to guarantee a position on any of the teams!

HOTEL ARRANGEMENTS

Official ISWA Event Hotel Reservation Link: <https://hotels.sitesearchllc.net/group-event?id=44520>

ISWA Sections

ISWA divides the state into five sections to best serve our clubs. Each area is served by a section director and designated officials to help answer questions and assist your local club.

2020-2021 CONTACT INFORMATION FOR SECTION DIRECTORS AND OFFICIALS

SECTION 1

CLUB DIRECTOR:
MARK GALKA
219-395-6987
mark.galka@arcelormittal.com

PAIRING OFFICIAL:
JEAN WHETSTONE
574-339-1813
jweve752@gmail.com

FS/GR OFFICIAL:
BILL FLATT
574-220-3920
bflatt4569@hotmail.com

FOLKSTYLE MAT OFFICIAL:
CHUCK BARNETT
219-510-5114
mr_charlie_man@yahoo.com

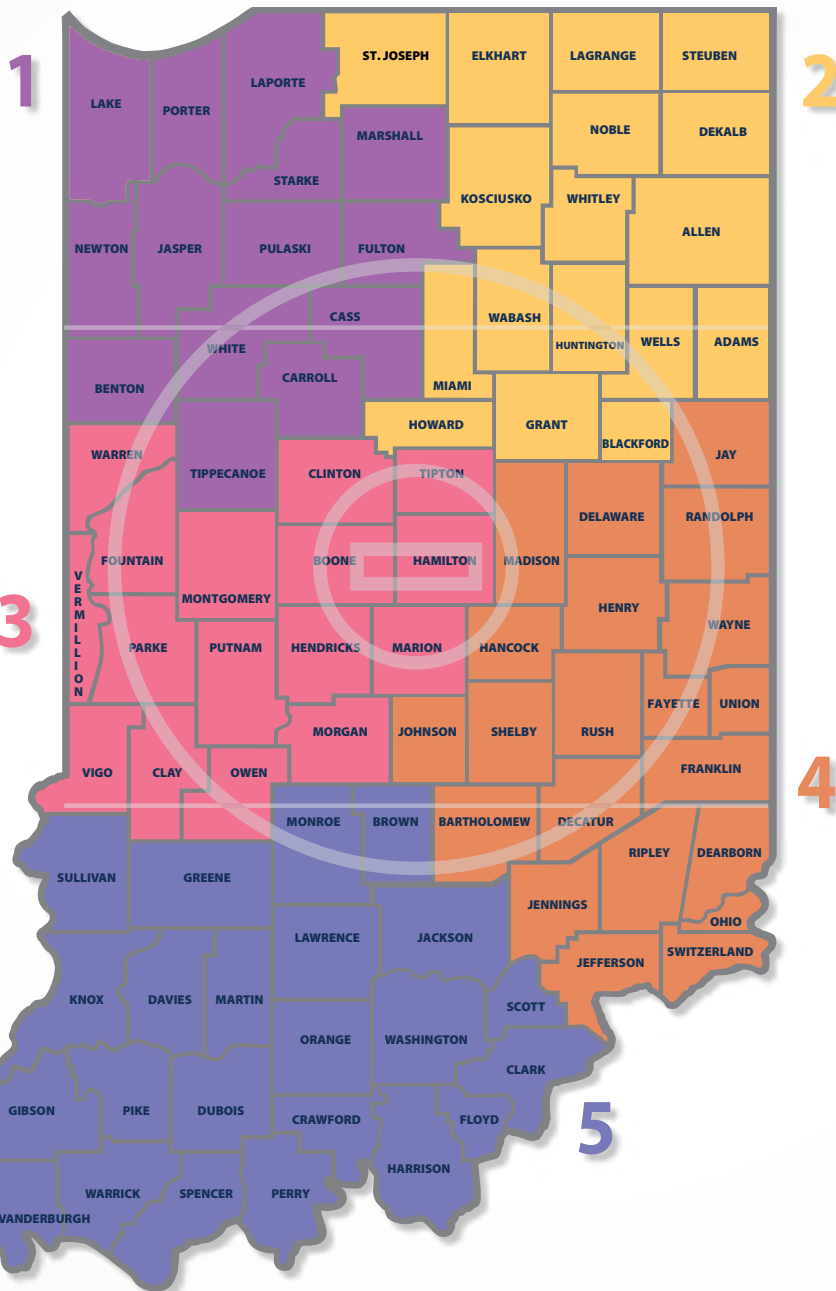
SECTION 3

CLUB DIRECTOR:
JENNIFER PIERSON
317-453-9677
djpierson9@aol.com

PAIRING OFFICIAL:
BETH LYBARGER
317-440-1909
bethlybarger@hotmail.com

FS/GR OFFICIAL:
J.D. MINCH
765-376-5638
jsaminch123@sbcglobal.net

FOLKSTYLE MAT OFFICIAL:
DAN FESER
317-371-6719
danfeser@comcast.net



SECTION 2

CLUB DIRECTOR:
MARY FRIEDT
260-724-3410
mary.friedt@yahoo.com

PAIRING OFFICIAL:
JULIE SHEPHERD
260-610-2560
jashepherd@yahoo.com

FS/GR OFFICIAL:
BEN NICELY
765-744-4500
wbnicely26@gmail.com

FOLKSTYLE MAT OFFICIAL:
TYRONE WILSON
260-627-9191
tpwilson61@gmail.com

SECTION 4

CLUB DIRECTOR:
MARK STEVENSON
317-738-2974
stevenson57m@gmail.com

PAIRING OFFICIAL:
JOE DOWNING
765-617-6072
joseph.downing@comcast.net

FS/GR OFFICIAL:
MIKE HESSER
317-340-6083
mikehesser@yahoo.com

FOLKSTYLE MAT OFFICIAL:
TIM WELCH
317-888-2695
twelch78@live.com

SECTION 5

CLUB DIRECTOR:
MICHELLE KASTER
502-403-7519
kaster_wrestling@yahoo.com

PAIRING OFFICIAL:
PATTY ROSBOTTOM
502-931-9209
pattymr16@yahoo.com

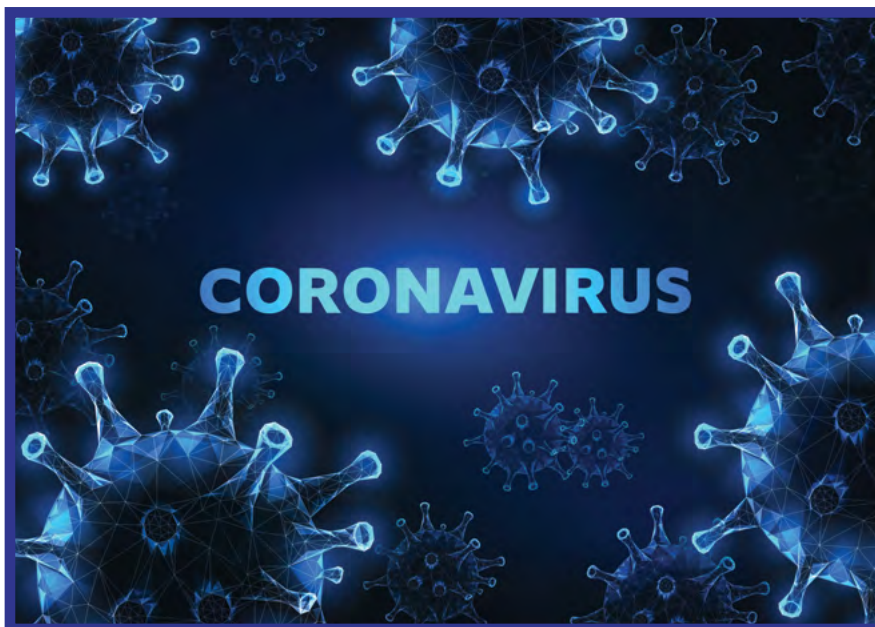
FS/GR OFFICIAL:
KEITH HALBIG
812-386-6613
keithhalbig@hotmail.com

FS/GR OFFICIAL:
KENNY HALBIG
812-664-7590
kshalbig4@yahoo.com

FOLKSTYLE MAT OFFICIAL:
KEVIN HUELSMAN
812-827-1051
kevin.huelsman33@gmail.com



ISWA OFFICE HOURS
Weekdays 9am-3pm
5715 Churchman Ave., Ste. L
Indianapolis, IN 46203
Phone: 317-780-1885
Email: office@iswa.com
Website: www.iswa.com
Mailing Address:
P.O. Box 157
Beech Grove, IN 46107



ISWA Note Regarding 2020 Results

Due to the COVID-19 pandemic, limited results were recorded because of the cancellation of ISWA Folk State, ISWA Freestyle/Greco State, and the remaining ISWA/USAW season after early March 2020, in order to keep our wrestling communities safe.

The ISWA would like to thank its members for their support and cooperation during the unprecedented pandemic. The ISWA worked closely to follow the recommendations set forth by the governor's orders, local health departments, the CDC, and USA Wrestling to comply with both local and national guidelines.

Sadly, the ISWA cannot acknowledge any 2020 Triple and Double Crown awards, along with many other special awards we hand out annually. The absence of results and awards for the 2020 season will certainly be an aspect we remember most when reflecting upon this year's time spent in quarantine.

The many videos and images our members and the ISWA Board shared during quarantine helped capture the popular pandemic phrase, "We are all in this together!" that defined this historic moment. As Zoom meetings and YouTube workout videos for the body and mind became the new normal, we as a united wrestling community stayed positive and compassionate during these unprecedented times.

The ISWA provided a virtual senior graduation ceremony, provided by the National Police Wives Association. This allowed us to host a tribute to those seniors for their hard work and accomplishments. Those wrestlers with ambitions to win All-American status at nationals could then move forward to think about which college they would choose to attend. The ISWA would like to congratulate our athletes whose senior year of wrestling was impacted by the pandemic. We wish you all the best of luck in the future!

The ISWA looks forward to the 2021 season with hopes to return to the mat in a safe, more cautious manner than before. Our members' health and safety remains our top priority as the ISWA Board studies the safest practices for hosting our regular wrestling season.

Please visit the following websites resources to stay in the know as the COVID pandemic situation evolves:

www.themat.com www.in.gov.org www.cdc.org www.iswa.com



Dear ISWA Supporter, Thank you for considering a sponsorship to the Indiana State Wrestling Associate. The ISWA is a non for profit organization serving nearly 200 clubs in the state and over 7,000 members in Indiana from coaches, volunteers and athletes. Our organization is a year round network of over 30 board members. USA Wrestling is our governing body leading up in the most successful position for Indiana wrestling.

The ISWA hosts a national event in June, a regional event in May and 5 state events. We also partner with the Indiana High School Coaches Association in helping run two other state events.

The ISWA takes great pride in our work ethic as well as our success serving Indiana for over 43 years The financial support from our community is vital! We are reaching out to you in hopes that you and/or your business will join our mission to grow and improve by the ISWA in supporting our efforts in providing the best opportunities . Our organization provides national competition/travel, international travel with a unique cultural exchange program along with many other areas of service to our members. The ISWA works very hard year-round. With your support, we look forward to helping our members succeed on and off the mat.

This past season has been greatly affected by COVID. We expect the 2020-2021 season to be one of our best. With your financial help it can happen. Thank you in advance for considering a sponsorship level that best fits your businesses budget and showcasing your generosity around the state of Indiana.

2020-2021 ISWA SPONSORSHIP LEVELS

GOLD LEVEL \$10,000: Includes full page ad space in publication, 4 state final table space, ad space in 4 event programs, onsite signage, monthly newsletter inclusion, quarterly social media ads, large-size quicklink on ISWA website to sponsor website, special request opportunity)

SILVER LEVEL \$5,000: Includes full page ad space in publication, 2 state final event table space, ad space 2 event programs, on site signage, monthly newsletter inclusion, annual social media ad, large-size website quicklink to sponsors website, special request opportunity)

BRONZE LEVEL \$1,000: Includes full page ad space in publication, medium website quicklink to sponsor website, monthly newsletter logo, logo in 4 state final programs)

COPPER LEVEL \$500: Includes half page ad space in publication, logo in 4 state final programs, medium website quicklink to sponsor website)

PARTNER \$100 Includes: 1/4 ad space in publication, logo in 4 state final programs, small website quicklink to sponsor website

If you are interested in becoming a sponsor or have any questions, please contact the ISWA Office at 317-780-1885 or office@iswa.com

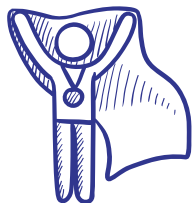
Deadline: September 1, 2021

Donations should be made payable to: Indiana State Wrestling Association.

Mail to: P.O. Box 157 Beech Grove, IN 46107

You may also pay online at: ww.iswa.com - PAYMENT
or line at: <https://www.iswa.com/page/show/4409844-payment>

Thank you for your consideration and support! Regards, Pat Culp, ISWA State Chairperson



2020 ISWA *Elementary Dual* TEAM STATE CHAMPS



CONGRATULATIONS!

Franklin Community High School hosted the 13th Annual ISWA Elementary Dual Team State Finals on Jan. 13, 2020. The expansion of 24 teams allowed for more dual competition that day.



ROCHESTER: Small Team Division Champions

SMALL TEAM DIVISION RESULTS

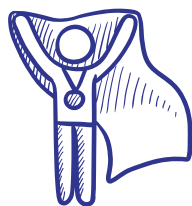
Champions: Rochester
Runner Up: Heritage Hills
Third Place: Leo



AVON: Large Team Division Champions

LARGE TEAM DIVISION RESULTS

Champions: Avon
Runner Up: Mater Dei
Third Place: Crown Point



2020 ISWA Middle School TEAM STATE DUALS



CONGRATULATIONS!

Carmel High School hosted the 1st Annual ISWA Middle School State Finals on Feb. 23, 2020. The following 16 teams competed: Jay County, Martinsville, Noblesville, Penn, Perry Meridian, Portage, Hamilton Southeastern, Franklin Twp, Franklin Community, Edgewood, Delta, Center Grove, and Carmel.



CENTER GROVE: Gold Pool Champions

GOLD POOL RESULTS

1st Place: Center Grove
2nd Place: Jay County
3rd Place: Brownsburg
4th Place: Hamilton Southeastern

1st Place Match:
Center Grove defeated Jay County (69-28)
3rd Place Match:
Brownsburg defeated Hamilton Southeastern (50-36)

SILVER POOL RESULTS

1st Place: Portage
2nd Place: Perry Meridian
3rd Place: Avon
4th Place: Franklin Township

1st Place Match:
Portage defeated Perry Meridian (50-35)
3rd Place Match:
Avon defeated Franklin Township (54-36)

BRONZE POOL RESULTS

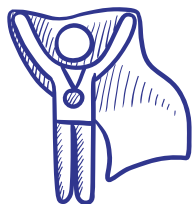
1st Place: Delta
2nd Place: Carmel
3rd Place: Franklin Community
4th Place: Penn

1st Place Match:
Delta defeated Carmel (59-36)
3rd Place Match:
Franklin Community defeated Penn (55-30)

BLACK POOL RESULTS

1st Place: Noblesville
2nd Place: Martinsville
3rd Place: Edgewood
4th Place: Bloomington South

1st Place Match:
Noblesville defeated Martinsville (62-31)
3rd Place Match:
Edgewood defeated Bloomington South (48-42)



2020 IHSWCA Middle School TEAM STATE GIRLS DIVISION



Held at Center Grove High School on Jan. 9, 2020

MS-GIRLS - 68 RESULTS

No wrestlers guaranteed any place.

MS-GIRLS - 74 RESULTS

1st Place:	Elizabeth Dowty of Indian Creek Wrestling Club	3rd Place:	Kendall Moe of Contenders Wrestling Academy
2nd Place:	Isabel Kaplan of West Lafayette Jr. High	4th Place:	Claire May of Roncalli Wrestling Foundation

MS-GIRLS - 82 RESULTS

No wrestlers guaranteed any place.

MS-GIRLS - 90 RESULTS

1st Place:	Heather Crull of Northeastern Middle School	4th Place:	Lydia Gerald of Martinsville ICG
2nd Place:	Joy Cantu of Merrillville Pirates Wrestling		Madmen Wrestling
3rd Place:	Avy Burkholder of Switzerland County Middle School	5th Place:	Naima Ghaffar of Northwood Middle School
		6th Place:	Joanna Cantu of Merrillville Pirates Wrestling

MS-GIRLS - 100 RESULTS

1st Place:	Julianna Ocampo of Beast Mode Wrestling Club IN	4th Place:	K'Yla Johnson of Contenders Wrestling Academy
2nd Place:	Phoebe Dowty of Indian Creek Wrestling Club	5th Place:	Kaylee Smith of JYMSI
3rd Place:	Aaliyah McLean of McCutcheon Wrestling Club	6th Place:	Ariana Sierra of Frankfort
		7th Place:	Alyssa Aber of Mishawaka Wrestling Club

MS-GIRLS - 110 RESULTS

1st Place:	Makenize Smith of Patriots Wrestling Club	6th Place:	Kateriawi Stephens of Lake Village
2nd Place:	Sydney Delois of New Palestine Jr. High	7th Place:	Hannah Seitzinger of Indian Creek Wrestling Club
3rd Place:	Aleksandra Bastaic of Highland Wrestling Club	8th Place:	Dakota Chowning of East Jay
4th Place:	Rose Kaplan of West Lafayette Jr. High		
5th Place:	Kaylee Bunton of Elite Athletic Club		

MS-GIRLS - 125 RESULTS

1st Place:	Ella Gahl of WDWK	5th Place:	Alexus White of SMS Warrior Wrestling
2nd Place:	Heidi Selis of Penn WC	6th Place:	Jasmine Camacho of New Palestine Jr. High
3rd Place:	Elly Janovsky of Grimmer Middle School	7th Place:	Brooke Butler of Noblesville Wrestling Club
4th Place:	Maylie Skinner of Madison Jr. High School	8th Place:	Madisyn Covington of New Palestine Jr. High

MS-GIRLS - 143 RESULTS

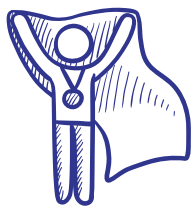
1st Place:	Amelia Westfall of Bulldog Premier Wrestling Club	5th Place:	Cassidy Eller of JYMS
2nd Place:	Haylee Selis of Penn WC	6th Place:	Brianna Hornaday of Contenders Wrestling Academy
3rd Place:	Josie Hause of Plainfield	7th Place:	Madeleine Durre of New Palestine Jr. High
4th Place:	Alexandria Brown of Northview Wrestling Club		

MS-GIRLS - 164 RESULTS

1st Place:	Lindsey Dill of Manchester	3rd Place:	Hiley Ward of Wabash
2nd Place:	Mercedes Tellechea of Northview Wrestling Club		

MS-GIRLS - 185 RESULTS

1st Place:	Varzidy Batchelor of Brazil
-------------------	-----------------------------



2020 ISWA Women's National Team



TEAM INDIANA

The 2020 Team Indiana women's trips were cut short this year due to COVID. This year was set to be monumental, because the ISWA was sponsoring two more national trips for the women wrestlers than the previous year, which shows we're taking proactive steps to improve the state's numbers.

We would like to thank Darby Nicely, our trip organizer, for scheduling all transportation and hotel arrangements, even though we didn't go.

A special thanks also goes to the following volunteer coaches, who each have a daughter on the team: Chad Fauber, Todd Crull, Dustin Cloud and John Cantu.

Last, but certainly not least, we would like to thank the ISWA Office for always keeping everyone on their toes. You are the glue that holds the ISWA together.

Jason DeLois
ISWA Womens Director
(317) 201-8700
IndianaGirlsWrestling.com

2020 ISWA Heartland Duals

TEAM INDIANA

Unfortunately, the 2020 MS National Duals trip to Council Bluffs, Iowa, for the Heartland Duals were cancelled due to the COVID-19 pandemic.

These wrestlers represent the majority who qualified for Team Indiana Gold and Blue and were set to make the trip:

Revin Dickman
 Ayden Bollinger
 Gavin Jendreas
 Issac Ash
 Charlie LaRocca
 Mason Day
 Isaiah Schaefer

Tanner Tishner
 Bradin Daniels
 Chase Stephens
 Kyrel Leavell
 Evan Cruz
 John Thornton
 Jacob Jones

Cameron Clark
 Brady Ison
 Zach Lang
 Hunter May
 Anthony Cashman
 Drew Mills
 Bray Emerine

De'Alcapone Veazy
 Gunner Henry
 Nate Johnson
 Dresden Roberts
 Gabe Harty
 Tyler Schott

We hope to return to the event in 2021. Keep training!

2020

Fargo Junior National Men's Championships

FARGO, NORTH DAKOTA

USA Wrestling has announced that the 2020 U.S. Marine Corps Junior and 16U National Championships at the Fargodome on the campus of North Dakota State in Fargo, N.D. has been cancelled. The competition, recognized as the largest wrestling tournament in the world, had been scheduled for July 17-24.

Brady Eppert

ISWA Junior Director

Blake Maurer

ISWA Olympic Style FS/GR Director

2020

Fargo Junior National Women's Championships

FARGO, NORTH DAKOTA

The 2020 Team Indiana women's trips were cut short this year due to COVID. This year was set to be monumental, because the ISWA was sponsoring two more national trips for the women wrestlers than the previous year, which shows we're taking proactive steps to improve the state's numbers.

We would like to thank Darby Nicely, our trip organizer, for scheduling all transportation and hotel arrangements, even though we didn't go.

A special thanks also goes to the following volunteer coaches, who each have a daughter on the team: Chad Fauber, Todd Crull, Dustin Cloud and John Cantu.

Last, but certainly not least, we would like to thank Tina Tonte and J.D. Minch in the ISWA office for always keeping everyone on their toes. You are the glue that holds the ISWA together.

2020

Kids Freestyle & Greco-Roman Nationals

WISCONSIN DELLS, WI JUNE 25-27, 2020

This year was set to be the first ISWA-sponsored Team Indiana to compete at the Kids Freestyle & Greco-Roman Nationals in Wisconsin Dells, Wis., scheduled for June 25-27. The ISWA made a major commitment by offering multiple cost discounts in order to increase our younger competitors' Olympic-style wrestling experiences at regional- and national-level competitions. The trip was open to any interested competitor, regardless of ISWA State Finals placement.

Organized by Kids Director Jason Miller and Team Leader Walt Gray, coaches Greg Schaefer, Bill Hawkins, Tyler Niccum, Matt Coughlin, Kyle Fellure, and others had committed to the coaching staff prior the event cancellation caused by the COVID-19 pandemic.

ISWA looks forward sponsoring a team trip again in June 2021, and we encourage wrestlers in the 8U-14U divisions to participate in this opportunity.

This new trip for the Kids Nationals was set to take place in Wisconsin on June 25-27, 2020, but due to the COVID-19 pandemic was also forced to be cancelled.

Please look for details and dates for this year's 2021 trip, once the USAW releases the dates. The below information listed for this trip still applies.

Cost:	TBD
Includes:	Transportation, hotel room, food, and gear (2 singlets, Team IN shirt).
Self-Registration:	Register at www.trackwrestling.com *Deadline TBD to sign up for the ISWA trip and confirm hotel booking. DO NOT MISS DEADLINE!
Trip Availability:	Any current USAW athlete wrestling in 8U / 10U / 12U / 14U.
About the Team:	This Team Indiana trip is designed to prepare the future of Indiana wrestlers in the Freestyle- and Greco-style development at an early age. This trip will be modeled after the largest national trip for 16U wrestlers, which takes place every summer at the Fargo Dome in Fargo, North Dakota.

The ISWA is proud to announce this first national trip in preparation for reaching this year's ISWA goal to expose younger kids to Olympic-style wrestling.

To participate in this unique opportunity, once dates get released, please contact:

Jason Miller
ISWA Kids Director
219-730-9489

Walt Gray
Team Leader
812-272-0170

2020 ISWA Celebrating 43 Years

of Service to Indiana Wrestling

Come Wrestle With Us!

We'd love for you to join us in supporting our sport.

The Indiana State Wrestling Association, Inc. (ISWA) represents USA Wrestling in the state of Indiana.

Founded in 1978, we continue to grow as we enter our 43rd year. Last year, our membership totaled 9,033 Athletes, 1,378 Wrestling Leaders, 113 Sanctions, and 192 Clubs. The ISWA coordinates competitive wrestling throughout Indiana, providing opportunities for competition in Folkstyle, Freestyle, Greco-Roman, and Women's Folkstyle & Freestyle. Working closely with athletes, coaches, parents, officials and administrators, we provide a host of wrestling programs, services and benefits to all of our members.

If you are interested in youth wrestling, the ISWA will happily answer your questions, as well as provide you with any information you might require to get started.

ISWA OFFICE STAFF

TINA TONTE – ISWA STATE SERVICES
J.D. MINCH – ISWA MEMBERSHIP

ISWA Office Headquarters
5715 Churchman Ave., Ste. L
Indianapolis, IN 46203

Mailing Address
ISWA
P.O. Box 157
Beech Grove, IN 46107

Office Hours
Monday thru Friday 9am–3pm

Email: office@iswa.com
Phone: 317-780-1885

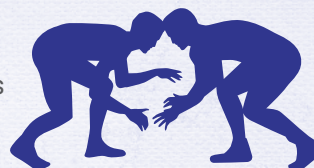
The office is closed on holidays.

Indiana State Wrestling Association, Inc.



Founded in
1978

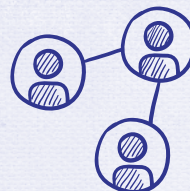
9,033
Athletes



1,378
Coaches & Officials



113
Sanctions



192
Clubs

– Phone: (317) 780-1885 • Email: office@iswa.com • Website: iswa.com –

Valued Sponsor

Thank you for partnering with the ISWA to help Indiana wrestlers excel at every level!



If you are interested in becoming a sponsor or have any questions, please contact the ISWA Office at
317-780-1885 or office@iswa.com
www.iswa.com/sponsordonations

Like our new look?

This year's updated ISWA book is brought to you by these vendors:



image **ink**

yourimageink.com



gurtowskygraphics.com



Join the IHSWCA

INDIANA HIGH SCHOOL
WRESTLING COACHES ASSOCIATION

COACHING CONNECTION

Your Indiana coaches association supports our sport in many ways. The IHSWCA sponsors a Spring and Fall Clinic, the Coaches Hospitality Room at the IHSAA State Finals, the Indiana/Illinois All-Star Dual Meet, the State Wrestling Coaches Hall of Fame Banquet, Milestones in Coaching Awards, the Academic All-State Jr & Sr Teams, the Middle School State Championship, IHSWCA State Duals Invitational, and various other awards and events. They also regularly meet with the IHSAA to discuss changes in rules, tournaments and procedures that impact state wrestling.

The IHSWCA needs every middle school and high school wrestling coach to get involved and become a member, so the organization can continue to promote the growth of our sport and represent the best interests of Indiana wrestling coaches and athletes.

If you're interested in joining IHSWCA and would like a membership application, visit ihswca.org or contact:

JD Minch

IHSWCA Executive Director

jsaminch123@sbcglobal.net

- Notes -



2020 - 2021

- Board of Directors -



ISWA EXECUTIVE BOARD

TREASURER JEFF STRUEDER

317-710-9857
jeff.strueder@ISWA.com

STATE CHAIR PAT CULP

260-609-1728
pat.culp@ISWA.com

SECRETARY TINA FOUTS

317-780-1885
tina.fouts@ISWA.com

VICE CHAIR - PROGRAMS

JIM TONTE
317-371-2654
jim.tonte@ISWA.com

PROGRAMS

VICE CHAIR - ADMINISTRATION

BEN NICELY
765-744-4500
ben.nicely@ISWA.com

ADMINISTRATION

OFFICE STAFF-STATE SERVICE

TINA TONTE
317-780-1885
office@ISWA.com

OFFICE STAFF-MEMBERSHIP

JD MINCH
317-780-1885
office@ISWA.com

TEAM LEADER DIRECTOR

THOMAS POMPEI
317-730-4056
thomas.pompei@ISWA.com

JUNIOR DIRECTOR

BRADY EPPERT
317-440-5504
brady.eppert@ISWA.com

WOMENS DIRECTOR

JASON DELOIS
317-201-8700
jason.delois@ISWA.com

CADET DIRECTOR

JAKE O'NEILL
317-372-2992
jake.oneill@ISWA.com

KIDS DIRECTOR

JASON MILLER
219-730-9489
jason.miller@ISWA.com

OLYMPIC STYLE FS/GR DIRECTOR

BLAKE MAURER
812-480-3480
blake.maurer@ISWA.com

STATE COACH DIRECTOR

DANNY STRUCK
812-786-2308
danny.struck@ISWA.com

LOGISTICS DIRECTOR

DARBY NICELY
937-441-4167
darby.nicely@ISWA.com

CULTURAL EXCHANGE

LOU SILVERMAN
317-490-1507
lou.silverman@ISWA.com

FUNDRAISING DIRECTOR

NANCY CAMPBELL
317-504-9752
nancy.campbell@ISWA.com

RTC DIRECTOR

JOSH CURRY
260-609-6830
joshua.curry@ISWA.com

FOLKSTYLE DEVELOPMENTAL

RYAN PARRISH
317-213-8598
ryan.parrish@ISWA.com

EQUIPMENT DIRECTOR

DAVID BOONE
765-730-3997
david.boone@ISWA.com

TOURNAMENT DIRECTOR

ROBY WEBSTER
765-376-5092
roby.webster@ISWA.com

HOSPITALITY DIRECTOR

LINDA ROBINSON
317-480-9732
linda.robinson@ISWA.com

FOLKSTYLE REFEREE DIRECTOR

BART WELCH
317-407-8035
bart.welch@ISWA.com

FS/GR MAT OFFICIALS DIRECTOR

MARK MUNDY
765-341-0214
mark.mundy@ISWA.com

IN. REP. TO NATIONAL PAIRINGS

JEAN WHETSTONE
574-220-3920
jean.whetstone@ISWA.com

PAIRING OFFICIALS DEVELOPMENT DIRECTOR

JENNIFER RATLIFF
812-579-2134
jennifer.ratliff@ISWA.com

SECTION DIRECTORS

SECTION 1 CLUB DIRECTOR:

MARK GALKA
219-395-6987
mark.galka@ISWA.com

SECTION 2 CLUB DIRECTOR:

MARY FRIEDT
260-724-3410
mary.friedt@ISWA.com

SECTION 3 CLUB DIRECTOR:

JENNIFER PIERSON
317-453-9677
jennifer.pierson@ISWA.com

SECTION 4 CLUB DIRECTOR:

MARK STEVENSON
317-738-2974
mark.stevenson@ISWA.com

SECTION 5 CLUB DIRECTOR:

MICHELLE KASTER
502-403-7519
michelle.kaster@ISWA.com

PROFESSIONAL CONSULTANTS

LAW & LEGISLATION CONSULTANT SAFESPORT COORDINATOR

STEVE PUGLIESE
317-409-8759
spuglieselaw@yahoo.com

SPORTS MEDICINE CONSULTANT

NICOLE MOSS
317-919-2193
nmoss@ecommunity.com

IT CONSULTANT

CHRIS PRUITT
317-627-6195
chris@firecloud.net

OLYMPIC STYLE CONSULTANT

ZACH ERRETT
317-402-9800
z_errett@hotmail.com



- **SCREEN PRINT**
- **EMBROIDERY**
- **SUBLIMATION**
- **TEAM GEAR**

- **PROMOTIONAL PRODUCT**
- **VINYL SIGNS/BANNERS**
- **LOGO DESIGN**

TODD

612-203-0706

fuller@3timegear.com

STEVE

701-371-6703

steve@3timegear.com



www.3timegear.com

ISWA
PO Box 157
Beech Grove, IN 46107

NON PROFIT
ORGANIZATION
U.S. Postage
PAID
Permit No. 4598
Indianapolis, IN



ISWA

Wrestling for Now and the Future

MEMBER BENEFITS

Our organization was founded in 1978 by a handful of Hoosier wrestling coaches and fans who had a dream. Through hard work and dedication, their dream became a reality. We hope you will join us and take advantage of all the exciting opportunities the ISWA has to offer. In 2021, we will again be hosting the following state final events: Elementary Dual Team, Middle School Duals, Folkstyle, Greco-Roman, Freestyle, and Women's Folkstyle & Freestyle State Finals. We also offer a Folkstyle, Freestyle and Greco-Roman State Finals for all University/Senior/Veteran age division wrestlers.

Membership Benefits for ISWA clubs, coaches, officials and athletes include:

- Monthly emails that include an eNewsletter, meeting notices and updates from the ISWA office
- An up-to-date and informative website: iswa.com
- A subscription to *USA Wrestler*, the official magazine of amateur wrestling
- Liability insurance coverage, provided through a quality carrier
- Secondary Sports Accident Insurance for all member athletes
- A tournament schedule that allows wrestlers opportunities to compete around the state. To find local events in your area, visit our website at www.iswa.com and go to **Tournaments - Event Schedule** (Note: Event lists are subject to change, so visit this page often.)
- An amazing Cultural Exchange Program for athletes

When you join the Indiana State Wrestling Association, Inc. and USA Wrestling, the National Governing Body for Wrestling in the United States, you have the knowledge that your membership brings with it the security of:

- A state organization over 9,033 athletes strong, with 192 member clubs
- A national organization that has grown to over 264,590 members and 6,501 clubs coast-to-coast enjoying over 3,005 events every year

If you are interested in participating in our program through competing, coaching, officiating, pairing or volunteering in any way, we invite you to do so today. The success of our program is due to the many volunteers working hundreds of hours. If you are interested in becoming a part of a great organization, we would gladly welcome you as a member of the ISWA wrestling family.