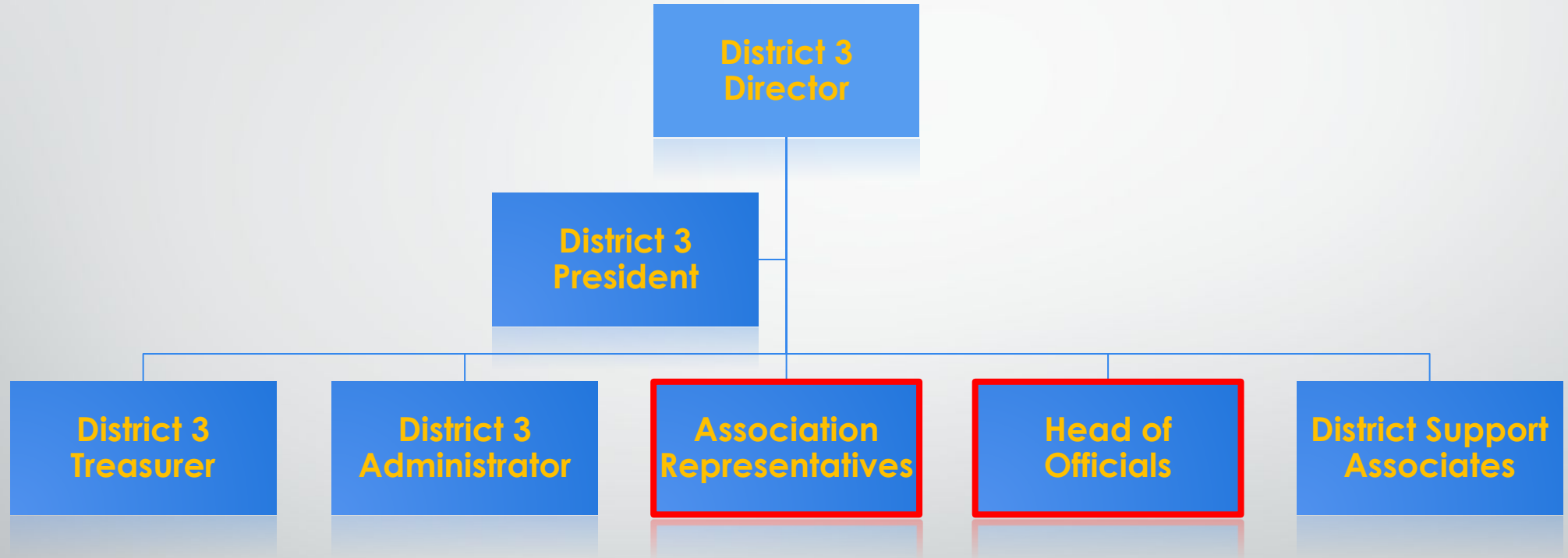




**District 3
Fall 2023
Managers Presentation**

District 3 Board of Directors



Being a Manager

- Managers main point of contact – Shelly Johnson, D3 Administrator
- Managers main point of contact for GameSheet – Kendra Verbeten, D3
- The team manager and head coach are the team's only point people
- D3 will not respond to any parents with requests about game results or related concerns
- Utilize the D3 Website – Manager Tab
- Coordinate team volunteers and game reporting

Team Responsibilities - games

- The home team will provide three minor officials/workers for each game:
 - Timekeeper
 - GameSheet Volunteer
 - Penalty Box Attendant
- The home team will provide a horn to signal the end of the period.
- The home team will also provide an iPad for use of scorekeeping with GameSheet.
- The **visiting** team shall provide 1 penalty box attendant.

Running the Clock

Score Board (Score clock) Attendant:

- Attendant should understand and know the basic rules of the game.
- Attendant should be adequately trained in how the score board works.
- At a minimum, Attendant should be able to set the period time, add goals, add and remove penalty times and start/stop the game clock.
- Not everyone should take a turn at “running the clock.” Use the team’s practice time for one parent to teach another how to use it. Game time is a bad time to learn.

Penalty Box

Penalty Box Attendants

- Attendant should understand and know the basic rules of the game.
- Attendant should understand it is not his/her role to discipline, educate or tease the players in the penalty box.

*** All volunteers acting as minor officials should refrain from actively cheering for their team while performing their jobs as minor officials.*

Using GameSheet

- All Districts in Minnesota Hockey will utilize GameSheet for the 2023-2024 season. Paper scoring is no longer allowed.
- All associations should have a GameSheet contact. Please make this person your first phone call/email/text with questions.
- GameSheet has put together a lot of video tutorials – watch them.
- Prior to the start of the season, you will receive two codes for your team. A league code and an invitation code for your team. This will come from your D3 association representative and is only for your team. Do not share your code.

Using GameSheet

- Prior to the first game, make sure to:
 - Set up your account
 - Load your team with the invitation code
 - Make sure your roster is loaded. Use the unique USAH roster code found on your approved roster.
 - Find volunteers to learn the GameSheet app.
- League Key is for the District and the Invitation Code is for your specific team. You will need both codes.

Using GameSheet

- Suspensions - Players serving a suspension must be marked as “suspended.” Do not remove from the roster or mark inactive.
- Scrimmages/Exhibitions - Must be set as an exhibition game for scoring. GameSheet has set up an Exhibition league including all teams across MN. For all scrimmages you will need to find the teams in the Exhibition League. ***(Please note this process may change – waiting on GameSheet.)***
- Penalties - Major penalties are still entered as two separate line items. Make sure you choose the appropriate penalty. (ex: cross-checking vs. GM: cross-checking)

Fair Play Points - This is a manual process.

Using GameSheet

- **Before the game:**

- Coaches sign the roster to verify the roster as accurate, including coaches present on the bench. Only approved coaches will be uploaded to GameSheet. Do not add coaches if they have not been approved by your registrar.

- **To close out a game:**

- End the game.
- The referee signs last and will lock the game. At this point changes cannot be made to goals, penalties or rosters.

Do not forget to upload the game **prior** to leaving the

FAIR PLAY POINT (FPP) THRESHOLD CHART

Level	Minutes	Level	Minutes
Squirt	10 min	Girls 10U	8 min
Peewee	12 min	Girls 12U	10 min
Bantam	14 min	Girls 15U	12 min
Youth 16U	16 min	Girls 16U	14 min
Junior Gold	16 min	Girls 19U	14 min

FPP EQUIVALENT CHART

	PIM Equivalent
Minor or Bench Minor	2 minutes
Major	5 minutes
Minor & Misconduct (2 & 10)	12 minutes
Misconduct (10)	10 minutes
Mouthguard Misconduct	2 minutes
Game Misconduct	10 minutes
Match	10 minutes

This chart shows you how many penalty minutes each type of penalty is assessed. Make sure and add up the equivalent penalty minutes.

3 Automatic Reasons to lose FPP

- A coach is assessed a Game Misconduct or Match Penalty
- A spectator/game official is requested to leave the arena by a referee
- A player receives a Match penalty for an obscene gesture or offensive/hateful/discriminatory language

Locker Room Monitors (LRM)

Locker Room Monitors must be present – **INSIDE THE LOCKER ROOM** - anytime players are in the locker room, and they must:

- Register with USA Hockey as a volunteer
- Complete the background screening
- Complete the SafeSport Training

Know your association's policy around locker room monitors (who does it? coaches? parents?)

Co-ed Locker rooms

When both male and female players are on a team, special consideration needs to be paid to getting dressed and undressed.

- Option 1 is to have a communicated base-layer policy.
- Option 2 is to have locker room options:
 - Separate locker rooms, with gender appropriate locker room monitors are the ideal
 - Taking turns getting dressed in one locker room is the next best option
 - Separate locker rooms should not impact the amount or quality of coaching available to each



Goalies...

What if we need a sub?

SQUIRT and 10U Levels

No Emergency Back up Goalies (EBUG) will be allowed for Squirts/10U. Exceptions may be made with the approval of the District Director.

If the rostered goalie is out, a skater from that team must be used.

The squirt and 10U programs are designed for development of players, not for wins and losses.

Substitute Goalies

In a case your goalie is not available to play (sickness, vacation) an substitute goalie is allowed:

- Sub Goalie must be at your level or lower (cannot be from a higher level).
- Sub Goalie must be from within your own association first.
- Sub Goalie must be from within your district next.
- Sub Goalie must wear his/her own team jersey.
- Substituting cannot interfere with his/her own team.
- EBUGs MUST have District Director approval (both districts if goalie is from outside D3).
- **Head Coach or Manager must submit the request.** Request is available on the D3 website.



League Games

Contact person:

Mark Brandt, D3 President

Game Length, Period Length, and Length of Penalties

Level	Ice Time Length	Period Length	# Of Officials	3-Penalty Rule	Minor Penalties	Major/Misconducts
Junior Gold	See Junior Gold League rules					
Bantam AA	90 minutes. resurface between 2 nd /3 rd	3 - 15 minute stop periods	4	No	2:00 minutes	5/10
Bantam A	90 minutes. resurface between 2 nd /3 rd	3 - 15 minute stop periods	3	Yes	2:00 minutes	5/10
Bantam B, C	75 minutes. No resurface	3 - 15 minute stop periods	2	Yes	2:00 minutes	5/10

Game Length, Period Length, and Length of Penalties – cont'd

Level	Ice Time Length	Period Length	# Of Officials	3-Penalty Rule	Minor Penalties	Major/ Misconducts
Pee Wee AA	75 minutes. No resurface	3 - 15 minute stop periods	2	No	1:30 minutes	5/10
Pee Wee A	75 minutes. No resurface	3 - 15 minute stop periods	2	Yes	1:30 minutes	5/10
Pee Wee B, C	60 minutes. No resurface	3 - 12 minute stop periods	2	Yes	1:00 minutes	5/10
Squirt* A, B, C	60 minutes. No resurface	3 - 12 minute stop periods	2	Yes	1:00 minutes	5/10
Mites /8U**	60 minutes. No resurface	3 - 12 minute stop periods	2	Yes	1:00 minutes	5/10

Game Length, Period Length, and Length of Penalties – cont'd

Level	Ice Time Length	Period Length	# Of Officials	3-Penalty Rule	Minor Penalties	Major/Misconducts
19U	90 minutes. resurface between 2 nd /3 rd	3 - 15 minute stop periods	4	Yes	2:00 minutes	5/10
15U-A	90 minutes. resurface between 2 nd /3 rd	3 - 15 minute stop periods	3	Yes	2:00 minutes	5/10
15U-B	75 minutes. No resurface	3 - 15 minute stop periods	2	No	2:00 minutes	5/10

Game Length, Period Length, and Length of Penalties – cont'd

Level	Ice Time Length	Period Length	# Of Officials	3-Penalty Rule	Minor Penalties	Major/ Misconducts
12U-A	75 minutes. No resurface	3 - 15 minute stop periods	2	No	1:30 minutes	5/10
12U-B	60 minutes. No resurface	3 - 12 minute stop periods	2	Yes	1:00 minutes	5/10
10U* A, B	60 minutes. No resurface	3 - 12 minute stop periods	2	Yes	1:00 minutes	5/10
NO TIMEOUTS ARE ALLOWED IN DISTRICT 3 LEAGUE PLAY FOR ANY LEVEL.						

Also listed in District 3 Rules and Regulations.

Rescheduling Games

It is the team manager's responsibility to check with the parents of team members to find out about conflicts including, but not limited to, school or religious reasons. DO THIS IMMEDIATELY.

Games will not be rescheduled for tournaments or exhibitions.

Specific rules related to weather rescheduling, arena shut down, and HS game reschedules are detailed on the D3 website.

Rescheduling Games

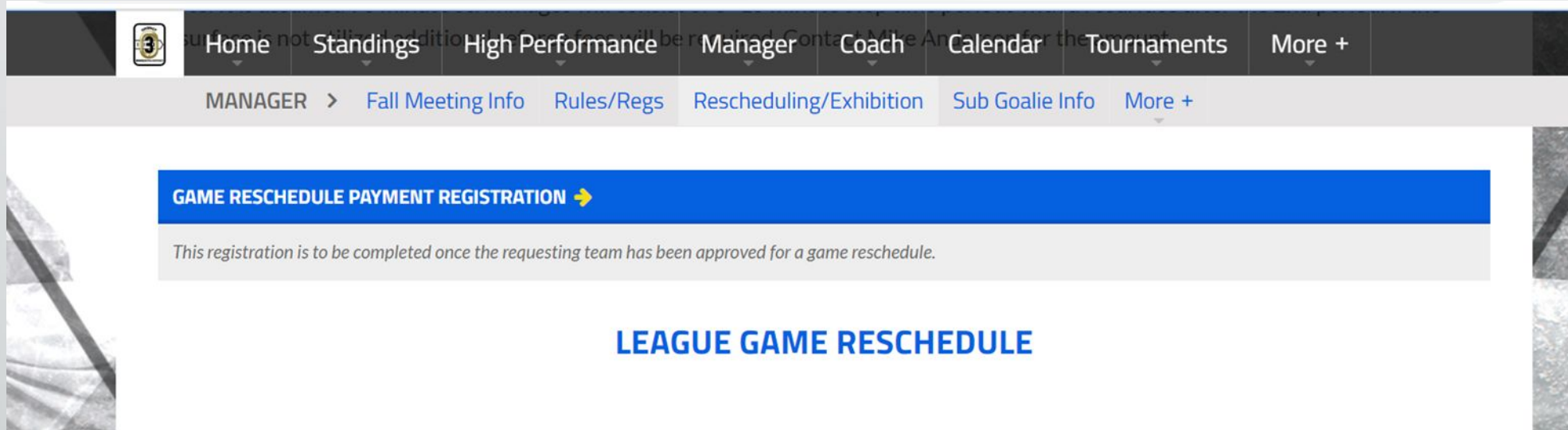
Game reschedules submitted by your association scheduler after:

- Oct 25 for bantams, PW, 15U and 12U and
- Nov 22 for squirts and 10U,

will be subject to a rescheduling fee of up to \$200.00 plus processing fees.

Refer to D3 Handbook for additional rules.

Rescheduling Games



To reschedule a game, you will need to request a game reschedule through your association scheduler. Once the game has been approved for a reschedule, you will receive a code. You need this code to set up and pay for your rescheduled game.

35-game limit for Squirts and 10U

Squirts and 10U teams are limited to a season total 35 games, not including District 3 End of Season Tournament games. All games (league, tournament and exhibition) played count toward this total.

Squirts and 10U teams are allowed up to five (5) controlled scrimmages – they must be registered via D3 registration – that will not count towards the 35-game limit. If the number of controlled scrimmages is greater than five and/or is not registered, these controlled scrimmages will count toward the 35-game limit.

35-game limit for Squirts and 10U

Shared Practices will be allowed and not count against the 35-game limit if the following criteria are met:

- The practice plan is sent 10 days prior to the scheduled practice to the District Director (coach should send) and
- The teams scrimmage no more than ten (10) minutes at the end of the shared practice.

If the criteria are not met, the shared practice will be considered a controlled scrimmage and count against the 35-game limit.

Game Misconduct Reporting

Game misconduct and match penalty reporting is the responsibility of the head coach - not the manager.

This info is included so managers are aware of the process.

Game Misconduct and Match Penalty Reporting

- Any Game Misconduct or Match Penalty – Assessed to either a player or coach...
- must be reported via the online suspension reporting system within **24 hours**.

Game Misconduct and Match Penalty Reporting

Home Standings High Performance Manager **Coach** Calendar

COACH > Fall Meeting Info Sub Goalie Info Squirt/10U Game Limit Concussion In

Coach

COACHES' CORNER

The coaches corner is a place to enhance your sports education. The goal of this area is to assist you in developing better players and better people for future success at whatever level you might be at. Our goal is for you to learn one new thing each time you visit this section. If you have any questions, suggested topics, or articles to contribute to this area please contact us.

[REGISTER: 2023-24 COACH REPORTING OF SUSPENSIONS →](#)

[MN HOCKEY COACHING RESOURCES →](#)

Coaches must register match penalties and game misconducts using this link on the D3 website.

Game Misconducts and Match Penalties

- Suspensions must be served during the next league, tournament or exhibition game that is on the schedule at the time the penalty is assessed.
- Make sure to check the score sheet, just because a player was removed from the ice doesn't mean he/she has an additional suspension.
- Players serving a suspension for a game should have their names marked in GameSheet as serving a suspension.

Match Penalties

- If a player on your team receives a match penalty, there will either be a match-penalty hearing or discipline issued without a hearing (per USA Hockey), prior to that player returning to play or attending any other team function.
- There may also be hearings for fan or coach aggression towards officials. Individuals will be notified of the hearing and if they are suspended. If a hearing conflicts with a team event, the individual will have to miss the team event.

Match Penalties

- As manager, you may be asked to provide additional information for the hearing.
- You are expected to keep all information related to the hearing and the discipline confidential. Some information will be public due to GameSheet.
- Questions about hearings should be directed to Shelly Johnson, D3 Administrator.



The Team Roster

Contact person:



Machel Whitmore, D3 Registrar

Team Roster

- All manager questions about your roster should go to your Association Registrar.
- Electronic Roster Link –the link you receive from your registrar will be the link you will always use for the electronic version of your roster. If the roster gets updated, the link will be updated.

Sample roster

10/18/2018 MNH0310-008 | 2018-2019 Official Team Roster

2018-2019 Official Team Roster

Original Approval: Tue Oct 16 2018 08:22:24 Central Daylight Time
Last Updated: Wed Oct 17 2018 15:40:39 Central Daylight Time
Approved by: SHELLEY SLATTERY

Program: MNH0310 Association: ASSOCIATION	Team: Team ID	Classification: MN Bantam 14 & Under USAH Midget Category: Travel Division: C
--	------------------	--

Players (11)

Last Name	First Name	Jersey #	Position	DOB	DOB Verification	Transfer	City	State	Zip
BALSTER	NICHOLAS	H A			V	N/A	WAYZATA	MN	55391
COMMERFORD	BRYCE	H A			V	N/A	MINNETONKA	MN	55305
DAU	HAYDEN	H A			V	N/A	PLYMOUTH	MN	55447
ELLIS	PETER	H A			V	N/A	PLYMOUTH	MN	55447
MUSOKRANOV	STEVEN	H A			V	N/A	PLYMOUTH	MN	55446
NELSON	LEYTON	H A			V	N/A	MAPLE GROVE	MN	55311
PILGRIM	ISAAC	H A			V	N/A	PLYMOUTH	MN	55446
PODIAK	LUCAS	H A			V	N/A	PLYMOUTH	MN	55447
ROTTER	ELVIS	H A			V	N/A	MAPLE GROVE	MN	55311
SIEDSCHLAG	JACK	H A			V	N/A	CORCORAN	MN	55340
THEISTE	AIDEN	H A			V	N/A	PLYMOUTH	MN	55447

Redlined Players (3)

Last Name	First Name	Jersey #	Position	DOB	DOB Verified	Transfer	City	State	Zip
EHLERS	LUKE	H A				N/A	PLYMOUTH	MN	55447
Redline Comments: DOB/CI Verification									
FRANTA	MAX	H A				N/A	MAPLE GROVE	MN	55311
Redline Comments: DOB/CI Verification									
LURA	JOE	H A				N/A	WAYZATA	MN	55391
Redline Comments: DOB/CI Verification									

Note: Redlined players are not approved for game play. Please see comments for reasoning.

Staff (1)

Last Name	First Name	Position	Card Number	Level Certified	Certifications Expires	Module	SafeSport	Screening
LYKE	BRIAN	Head Coach	0000124173	4	12/31/20**	BA14	Verified	Completed

* Indicates player's age is below the team's classification range. ** Indicates player's age is above the team's classification range.

Team Officials agree to abide by all Rules and Regulations of USA Hockey and Affiliate Association. A "V" in the DOB Verification column indicates the DOB has been verified by USAH, no additional documents are required. If a transfer is required for a Non-US Citizen it will be listed in the Transfer column. If a transfer has been completed it will say complete and the type of transfer will be listed. Individuals listed as a Team Rep/Mgr may not participate in on-ice activities, or be on the bench during games.

Redlined Player/Staff

- If a player or coach is “redlined” they are not allowed to participate.
- Your roster will be considered FINAL Dec 31.
- All rostering requirements for coaches must be completed by Dec 31 or they will be removed from the roster.

Student Coaches

- Player ages of 13 to 17
- Must register with USA Hockey
- Must attend a training session
- Must complete USA Hockey Student Coach Information Form
- Upon reaching 18 years of age a student coach must complete all aspects of being an assistant coach

10/18/2018 MNH0303-004 | 2017-2018 Official Team Roster




2017-2018 Official Team Roster

Original Approval: Fri Sep 08 2017 14:37:50 Central Daylight Time
Last Updated: Thu Nov 09 2017 08:40:31 Central Standard Time
Approved by: SHELLEY SLATTERY

Program: MNH0303 Association:	Team: Team ID:	Classification: MN PeeWee 12 & Under USAH Bantam Category: Travel Division: B
----------------------------------	-------------------	---

Players (17)

Last Name	First Name	Jersey #	Position	DOB	DOB Verification	Transfer	City	State	Zip
BJERKE	BRADY	H A			V	N/A	GOLDEN VALLEY	MN	55422
DUFFY	LANDEN	H A			V	N/A	HOPKINS	MN	55343
FRANK	CHARLES	H A			V	N/A	GOLDEN VALLEY	MN	55416
FRODERMANN	BENNETT	H A			V	N/A	EDEN PRAIRIE	MN	55344
HAGEN	BECK	H A	Goalie		V	N/A	GOLDEN VALLEY	MN	55427
HOLDEN	PARKER	H A			V	N/A	HOPKINS	MN	55343
JENSEN	EVAN	H A			V	N/A	SAINT PAUL	MN	55105
KRAMER	ELI	H A			V	N/A	ST LOUIS PARK	MN	55426
KRAUSE	DANIEL	H A			V	N/A	GOLDEN VALLEY	MN	55427
KUYPER	OWEN	H A			V	N/A	HOPKINS	MN	55343
LANDSCHOOT	BRADY	H A			V	N/A	HOPKINS	MN	55343
LIN	ALLEN	H A			V	N/A	MINNETONKA	MN	55343
MISCHKE	AIDAN	H A			V	N/A	HOPKINS	MN	55343
POST	CHRISTOPHER	H A			V	N/A	HOPKINS	MN	55343
RONLUND	ALIGUSTUS	H A			V	N/A	GOLDEN VALLEY	MN	55416
ROTHMAN	DAVID	H A	Goalie		V	N/A	MINNETONKA	MN	55345
WAHL	JADEN	H A			V	N/A	HOPKINS	MN	55343

Staff (5)

Last Name	First Name	Position	Card Number	Level Certified	Certifications Expires	Module	SafeSport	Screening
POST	ANDREW	Head Coach	000465349	2	12/31/2018	PW12	Verified	Completed
FRODERMANN	MICHAEL	Assistant Coach	000477950	1	12/31/2018	PW12	Verified	Completed
JENSEN	JOSHUA	Assistant Coach	000482301	1	12/31/2018	PW12	Verified	Completed
KRAMER	KEVIN	Assistant Coach	000453289	3	12/31/2019	PW12	Verified	Completed
NELSON	WILLIAM	Student Coach				N/A	N/A	N/A

* Indicates player's age is below the team's classification range. ** Indicates player's age is above the team's classification range.

Team Officials agree to abide by all Rules and Regulations of USA Hockey and Affiliate Association. A "*" in the DOB Verification column indicates the DOB has been verified by USAH, no additional documents are required. If a transfer is required for a Non-US Citizen it will be listed in the Transfer column. If a transfer has been completed it will say complete and the type of transfer will be listed. Individuals listed as a Team Rep/Mgr may not participate in on-ice activities, or be on the bench during games.

Hockey Hot Spots

- Only players listed on the USA Hockey Roster are ever allowed to play games which include scrimmages (controlled or otherwise) and tournaments.
- Only players listed on the USA Hockey Roster are allowed to practice with a team; unless it is a joint practice of 2 or more teams. No older or younger sibling or children of coaches are allowed on the ice.
- No one is allowed to coach unless they are listed on the teams USA Hockey Roster. The exception to this would be specialty coaches (skating, shooting, etc...)

USA Hockey Player Awards

- Award Request Link is on the manager page on D3 website – to be completed by managers only. **Never alter stats on the scoresheet!**



- Hat Trick – 3 goals
- Play Maker – 3 assists
- Zero Award – shutout (**goalkeeper playing a complete game**)
- **Conditions**
 - Rostered Player
 - League Competition or Sanctioned Tournament (No

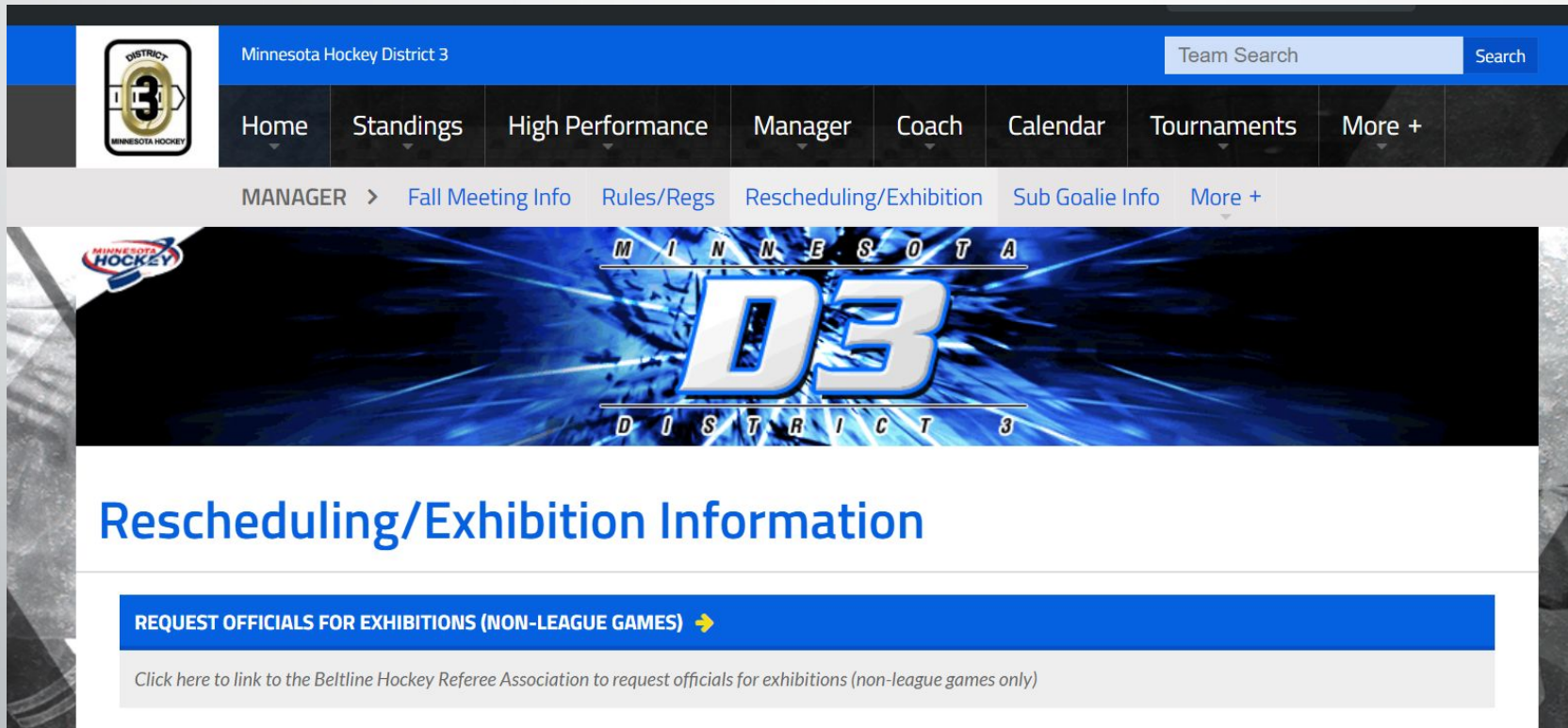


Scheduling Exhibitions

Contact person:

Mike Anderson, BHRA

Once you have secured your ice and the opposing team, you will need officials. Go the manager page on the D3 website and request officials using the link identified below...



The screenshot shows the website for Minnesota Hockey District 3. The header includes the district logo, the name "Minnesota Hockey District 3", and a "Team Search" box. The main navigation menu contains links for Home, Standings, High Performance, Manager, Coach, Calendar, Tournaments, and More +. A secondary navigation bar under "MANAGER" includes links for Fall Meeting Info, Rules/Regs, Rescheduling/Exhibition, Sub Goalie Info, and More +. The main content area features a large graphic with "MINNESOTA D3 DISTRICT 3" and the heading "Rescheduling/Exhibition Information". A prominent blue button reads "REQUEST OFFICIALS FOR EXHIBITIONS (NON-LEAGUE GAMES) →". Below the button, a text link states: "Click here to link to the Beltline Hockey Referee Association to request officials for exhibitions (non-league games only)".



Beltline Hockey Referee Association

[Home](#)

[Board Members](#)

[Links & Info](#)

[New Officials](#)

[Team Managers](#)

[Restricted Access](#)

[Exhibition Requests](#)

[Tournament Info](#)

Welcome to the Beltline Hockey Referee Association's website!



The BHRA provides hockey officials to Minnesota Hockey District 3 and several other hockey programs. Please contact any of our [board members](#) for more information.

Interested in becoming a hockey official for the BHRA? Please fill out the [new official information](#) form.

D3 Administrators can click [here](#) for the daily schedule.



BHRA Exhibition Request Form

Use the form below to request officials to work your exhibition(s). **Requests must be submitted a minimum of (7) days prior** to the event to help ensure that officials are available to work your game. **No weekend exhibitions at this time that includes Friday, Saturday, or Sunday.**

You must reimburse officials for any parking fees for exhibitions at Mariucci, Ridder.

Managers please double check DATES and TIMES AM or PM before hitting Submit Button. When I confirm request look at attached form and make sure it's correct.

Exhibition payment must be made by D3 requesting team or association only

We are not accepting exhibition requests from non-D3 teams

No exhibitions will be scheduled for Off Season AAA teams.

[Scrimmage rates 21-22.pdf](#)

You must request officials for your Exhibition at least 168 in advance of the game.

Requestor's Name:

First and Last Name

Requestor's Email Address:

Email Address

Requesting Manager Phone #:

() - -

Requesting Team:

e.g. Maple Grove PeeWee B1 Crimson

Opponent:

e.g. Wayzata PeeWee B1 Gold

Date of Exhibition:

Scrimmage Date Use icon to pick date.

Time of Exhibition:

Pick or type in time.

Exhibition Location:

Select Arena

Use drop down to select arena do not hand type arena



When filling out exhibition form, please follow procedures below. **Please Read Carefully!**

1. Form must be submitted seven (7) days or 144 hours prior to exhibition date. Four days prior is required for exhibitions in October.
2. Make sure you type your correct email address! Failure to do so will result in NO confirmation email. Double check before submitting form.
3. **Do NOT hand type arena in location box.** You must choose the arena from the drop-down menu. If arena is not listed, we do not service that arena.
4. You will receive a confirmation email directly from me once I have entered the game into our system. This email is your confirmation. Depending how far out the exhibition is it may be a couple of days before I confirm. I do check requests often, and I will contact you immediately if I see an issue or have a concern.
5. 24-hour notice is required for all cancelations. Inclement weather is the exception.
6. Any same day change to exhibition request, time, location, do not fill out a new form, contact me directly. I do not need to know visiting team change.
7. Contact me by email for all exhibition cancelations. If same day, please follow up with a phone call.

Scheduling exhibitions and costs

- Exhibitions are non-league games.
- Exhibitions are scheduled separately from your league games.
- Have a plan for who pays for ice and officials. If other team is paying refs and is NOT a D3 team, YOU must pay the officials and have other team reimburse you.
- **Officials need to be paid prior to the start of the exhibition.**

2023/2025 Exhibition Game Rates

Game Level	Game Fee	Sch. Fee	Total	Game Length
Squirt/10U's	\$110.00	\$10.00	\$120.00	1.0 Hour
Squirt/10U's	\$120.00	\$10.00	\$130.00	1.25 Hour
PB1,PB2,PC,12UB1,12UB2	\$120.00	\$10.00	\$130.00	1.0 Hour
PB1,PB2,PC,12UB1,12UB2	\$145.00	\$10.00	\$155.00	1.25 Hour
PB1,PB2,PC,12UB1,12UB2	\$170.00	\$10.00	\$180.00	1.5 Hour
PAA,PA,12UA	\$120.00	\$10.00	\$130.00	1.0 Hour
PAA,PA,12UA	\$145.00	\$10.00	\$155.00	1.25 Hour
PAA,PA,12UA	\$170.00	\$10.00	\$180.00	1.5 Hour
Game Level	Game Fee	Sch Fee	Total	Game Length
Bantam B2,BC,15UB	\$130.00	\$10.00	\$140.00	1.0 Hour
Bantam B2,BC,15UB	\$158.00	\$10.00	\$168.00	1.25 Hour
Bantam B2,BC,15UB	\$186.00	\$10.00	\$196.00	1.5 Hour
Bantam B1	\$136.00	\$10.00	\$146.00	1.0 Hour
Bantam B1	\$164.00	\$10.00	\$174.00	1.25 Hour
Bantam B1	\$192.00	\$10.00	\$202.00	1.50 Hour
Bantam A, 15UA	\$202.00	\$10.00	\$212.00	1.25
Bantam A, 15UA	\$223.00	\$10.00	\$233.00	1.5 Hour
BAA	\$238.00	\$10.00	\$248.00	1.5 Hour
Jr.Gold 16U	\$223.00	\$10.00	\$233.00	1.50 Hour
Jr.Gold A & B	\$292.00	\$10.00	\$302.00	1.50 Hour
19UB	\$160.00	\$10.00	\$170.00	1.50 Hour
Requesting team's association will be invoiced scheduling fee.				
1.0 Hour Exhibitions at UVM or Ridder pay 1.50 Hour rate				
Requesting team will reimburse parking fees.				
No games After 3:00PM on New years eve or super bowl Sunday				
Games on New Years day will pay Double				
Exhibition request with less than 7 day notice will incur \$25.00 scheduling fee and \$20.00 per official Premium.				

A \$25 per official premium for all games on SLP outdoor rink. Only SLP youth hockey may request officials for the ROC.

Key Points for Exhibitions

- Exhibitions *MUST* be scheduled through the BHRA website.
- Officials must be paid by the D3 TEAM prior to the start of the game. If the other team has agreed to pay for refs, it is your responsibility to collect payment for your team.
- Blackout Dates*: **NO** exhibitions will be scheduled on the following dates:
 - November 24, 25 and 26
 - January 19, 20 and 21
 - February 17 and 18

*Future dates may be added

Remember...

Prior to all games and exhibitions

- Check referee locker room 15 minutes prior to game time.
- Call immediately if no referees:
 - Mike 612-618-4001
 - Denise 612-554-1960



Tournaments

Contact person:

Michele Jirik, D3 Invitational Tournaments

Invitational tournaments

- Must be sanctioned by MN Hockey
- Out-of-state tournaments...teams must be pre-approved for out-of-state travel. Link to online form is on D3 manager tab
- Your coach must send in any game or match misconducts that take place in a tournament. Follow the game/match misconduct rules outlined in the Rules and Regulations.



2023-2024

District 3 End of Season Tournaments

Bantam and PW AA/A, B1,
15UA & B, and 12UA & B1
will start February 17, 2024

Bantam and PW B2/C, and 12UB2
will start February 24, 2024

Squirt and 10U will start March 4, 2024



2023-2024

District and State Tournaments

MN Hockey Region Tournaments
March 1-3, 2024

MN Hockey State Tournaments
March 15-17, 2024

Wrapping it up...

- Sometimes a “win” isn’t always reflected by the score.
- Please use this presentation as a resource during the season. We will always be happy to answer questions and clarify what may not be clear, but we ask that you utilize this resource first as it may very well provide what you need. It will be posted on the Manager Tab of the D3 website.
- Thank you for managing!

HAVE A GREAT SEASON!!!

